

A large fire is burning at night, with bright orange and yellow flames rising from a structure. In the foreground, a chain-link fence is visible, and a dark silhouette of a tree branch is on the right. The background shows a house partially obscured by the fire.

FIRE IN IDAHO

2013

Retirement



Jeff Sands, former Fire Chief in Payette, Idaho, joined our team in January 2010. He served as Chief Deputy/Investigations until his retirement at the end of September 2013.

We thank him for his service and wish him the best in his future endeavors.

C.L. "BUTCH" OTTER
Governor

State of Idaho
DEPARTMENT OF INSURANCE

700 West State Street, 3rd Floor
P.O. Box 83720
Boise, Idaho 83720-0043
Phone (208)334-4370
FAX # (208)334-4375

WILLIAM W. DEAL
Director

MARK LARSON
State Fire Marshal

July 1, 2014

Honorable C. L. "Butch" Otter
Governor, State of Idaho
Statehouse
Boise, ID 83720

Dear Governor Otter:

The 2013 edition of the annual report of the State Fire Marshal's office is based on information contributed by fire agencies statewide, including city fire departments, fire districts, fire protection associations and state and federal agencies.

This report is the first opportunity we have had to include information on Rangeland Fire Protection Associations. Four associations were in place for the 2013 rangeland fire season, and more are being formed for 2014. They are an excellent example of neighbors helping neighbors as well as aiding the agencies responsible for fighting fires in Idaho's vast rangelands.



The number of emergency responses by fire agencies increased by more than 8% from last year to over 101,800. The number of fire/explosion responses decreased by 13% to 6,340. Unfortunately, the number of firefighter injuries rose by 8% to 100 and the number of civilian fatalities rose over 80% to 20.

The statistics referred to in this letter and in the following report highlight the need for all Idahoans to practice fire safety. We must be aware of the dangers of uncontrolled fire in our homes and places of business and while enjoying our great outdoors.

Heartfelt thanks to my staff for producing this report and to the collaborating agencies for providing their information.

Respectfully submitted,

A handwritten signature in cursive script that reads "Mark Larson".

Mark Larson
State Fire Marshal

Governor
C.L. "Butch" Otter

Department of Insurance
William W. Deal, Director

Idaho State Fire Marshal
Mark Larson

Mission Statement

The State Fire Marshal's Office participates in and coordinates an integrated statewide system designed to protect human life from fire and explosions through fire prevention, investigation and public education activities. The program involves fire prevention activities, fire/arson investigations, code enforcement and the operation of the Idaho Fire Incident Reporting System. The State Fire Marshal's Office provides assistance to local fire agencies throughout the state.

Table of Contents

STATE FIRE MARSHAL DIVISION

Customer Service	2
State Fire Marshal Staff/District Map	3
Fires Investigated/Inspections and Plan Reviews	4
Idaho State Fire Marshal Classes	6
Certification and Licensing	7

INCIDENT SUMMARY STATISTICS

Summary of Statistics

Incident Summary	10
Incident Responses by Month, Day and Hour	11
Top 10 Incident Types by Incident Categories	12
Five-Year Trends	14
Fire Calls by Month, Day and Hour	16
Fires in Idaho	17
Comparisons of 2012 and 2013 County Populations and Reported Incidents.....	18

Structure Fires

Areas of Origin for Residential Structure Fires	20
Residential Structure Fire Spread	21
Reported Large Dollar Loss Structure Fire Events	22
Structure Fires by Property Use	23
Smoke Detector Performance	28
Automatic Extinguishing Systems	29

Civilian Fire Casualties

Civilian Fire Casualty Statistics	30
Civilian Fire Fatalities	32

Fire Service Casualties

Fire Service Injuries	34
Fire Service Injuries by Incident Type/Severity of Injuries	35

DEPARTMENT STATISTICS

Importance of Data Quality Control	38
Reporting Trends	39
Departments NOT Reporting	41
Reporting Departments	42

Glossary of Terms	50
--------------------------------	----

Fire Department Information by County	52
--	----

Wildland Fires

Idaho Department of Lands 2013 Year-End Fire and Annual Reports.....	61
Rangeland Fire Protection Associations (RFPA) in Idaho	66
Statistics from National Interagency Fire Center	67



Customer Service

Through our offices in Boise, Coeur d'Alene, Idaho Falls and Moscow, our staff of nine dedicated individuals works with a broad spectrum of customers in both the public and private sectors.

By statute, we are responsible for:

- Adoption of the fire code as a minimum standard for the state
- Prescribing regulations and making rules related to the fire code
- Plan review on all new and remodeled state buildings for compliance with adopted fire codes
- Inspecting/testing new fire sprinkler systems and fire alarm systems in all new and remodeled state buildings
- Collecting information on all fires in Idaho
- Regulating the fire sprinkler industry
- Reviewing all plans for single service fire sprinkler systems installed in Idaho
- Licensing fireworks wholesale and import businesses
- Compliance by cigarette manufacturers with Idaho's law for reduced ignition propensity by ensuring cigarettes sold in Idaho meet the required safety standards
- Training and certification provided to local authorities who apply the provisions of the adopted statewide fire code
- Serving as an avenue for appealing local code application decisions as provided by Idaho law
- Serving as the chief arson investigator for the state of Idaho

We also provide assistance to our customers by:

- Assisting local fire jurisdictions with plan reviews, inspections and code interpretation
- Conducting classes in fire investigation, code application and incident reporting
- Answering questions and providing statistical research for:
 - o Architects
 - o Engineers
 - o Fire code officials
 - o Developers
 - o Attorneys
 - o Elected officials
 - o Law enforcement
 - o Individual citizens
- Participating in numerous arson task forces throughout the state as well as regional fire chiefs' associations
- Active involvement in the development of national fire and life safety standards
- Serving as an active member of the Idaho Lands Resource Coordinating Council
- Working with the Northwest Insurance Council to establish the Arson Hotline and a reward-for-information program

Contact email address for Idaho State Fire Marshall staff members:

Mark Larson, State Fire Marshal
Knute Sandahl, Chief Deputy
Nesha Pabst, Administrative Assistant
Cheryl Karnowski, IFIRS Program Coordinator
Tom Mroz, Deputy-District II
Don Strong, Deputy-District I
Bill Steele, Deputy-District I
Ivan Hibbert, Deputy-District III
Verl Jarvie, Deputy-District III

mark.larson@doi.idaho.gov
knute.sandahl@doi.idaho.gov
nesha.pabst@doi.idaho.gov
cheryl.karnowski@doi.idaho.gov
tom.mroz@doi.idaho.gov
don.strong@doi.idaho.gov
bill.steele@doi.idaho.gov
ivan.hibbert@doi.idaho.gov
verl.jarvie@doi.idaho.gov

Idaho State Fire Marshal Staff

Mark Larson, State Fire Marshal (cell 208-867-3720)
Nesha Pabst, Administrative Assistant
Cheryl Karnowski, IFIRS Program Coordinator (cell 208-867-5186)
700 West State Street, 3rd Floor
Boise, ID 83720-0043
208-334-4370

Fire Origin and Cause Investigation

District I

Bill Steele
Deputy Fire Marshal
2005 Ironwood Parkway #143
Coeur d'Alene, ID 83814
208-769-1447 (cell 208-691-0721)

District II

Tom Mroz
Deputy Fire Marshal
700 West State Street, 3rd Floor
Boise, ID 83720-0043
208-334-4370 (cell 208-867-3395)

District III

Ivan Hibbert
Deputy Fire Marshal
1820 East 17th Street, Suite 220
Idaho Falls, ID 83404
208-525-7209 (cell 208-705-5621)

Fire Prevention

District I

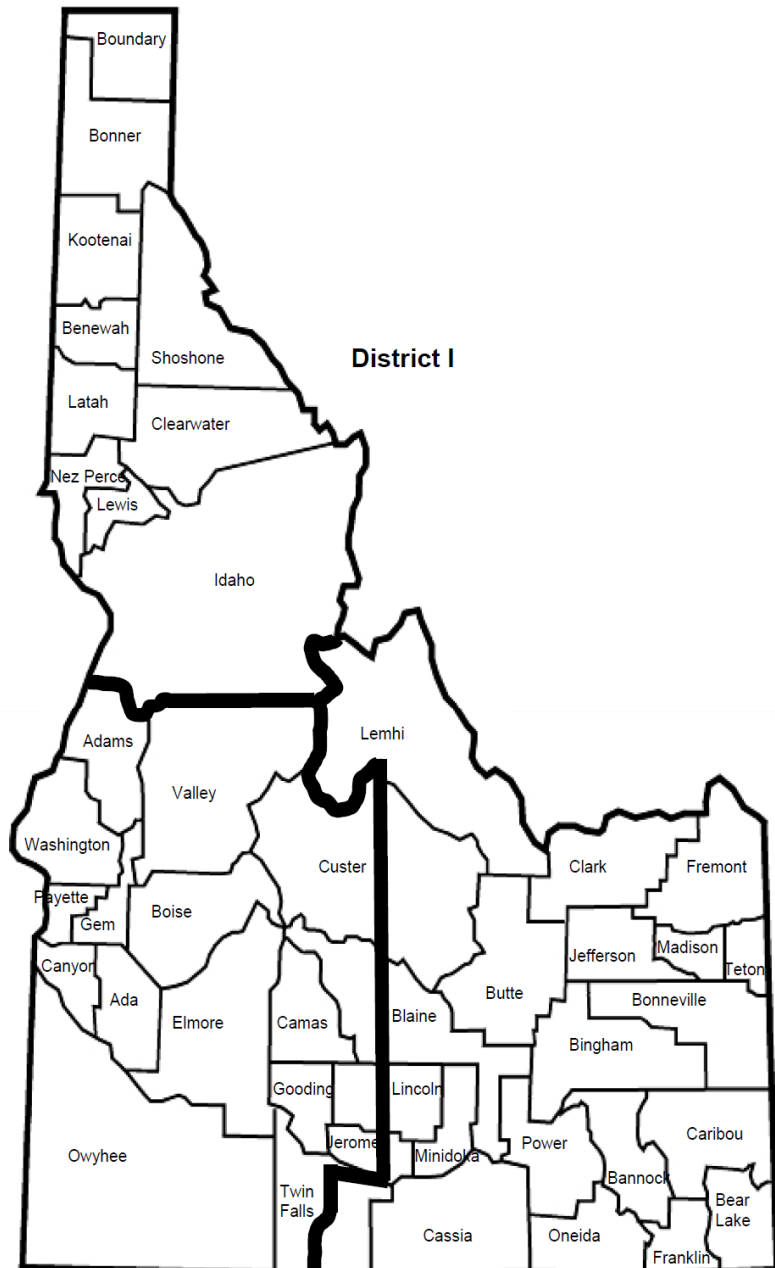
Don Strong
Deputy Fire Marshal
(home/office)
Moscow, ID 83843
208-882-2368 (cell 208-699-3588)

District II

Knute Sandahl
Chief Deputy Fire Marshal
700 West State Street, 3rd Floor
Boise, ID 83720-0043
208-334-4370 (cell 208-921-7838)

District III

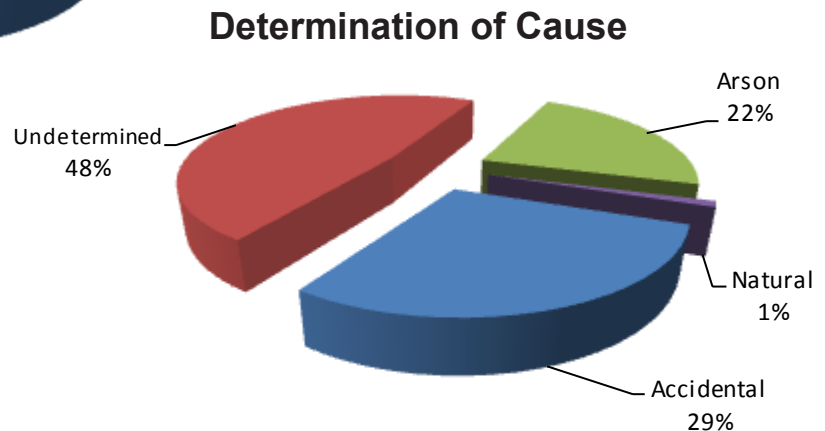
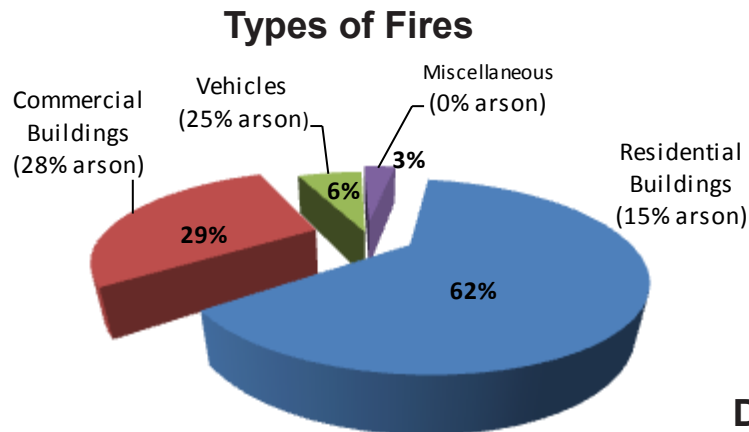
Verl Jarvie
Deputy Fire Marshal
1820 East 17th Street, Suite 220
Idaho Falls, ID 83404
208-525-7022 (cell 208-705-5620)



District II

District III

Fires Investigated by Idaho State Fire Marshal Staff



The investigation section saw a decrease in requests for fire investigations in 2013. This may be attributed to an increase in fire service agencies acquiring training and certification in determining the origin and cause of fires and an 8% decrease in fires reported statewide.

Deputy Mark Aamodt left state service in September, accepting the fire chief's position at Shoshone County Fire Protection District #2, the agency where he began his fire service career. State Fire Marshal Mark Larson commented, "We stole him away and they stole him back." Chief Deputy Jeff Sands retired in September to spend more time with his family and to pursue his passions for fishing and hunting.

Deputies from the State Fire Marshal's Office assisted in investigations of four notable fires in Idaho, three in the month of April. The first two fires involved two churches in the city of Emmett. The cause of these fires was determined to be arson and two suspects were arrested and charged with these and other crimes. The third fire occurred in the city of Jerome involving a downtown commercial/residential series of occupancies, and was said to be the largest fire in recent Jerome history, resulting in damages of over \$1 million. The fourth was a major fire that destroyed large grain storage/processing structures in Craigmont, resulting in multi-million dollar losses.

Every fire in Idaho deserves the utmost attention in determining its origin and cause. This information is important for identifying potential consumer product malfunctions, improper use of consumable goods or equipment and adjudication of responsible person(s) in a criminal act.

Inspections and Plan Reviews

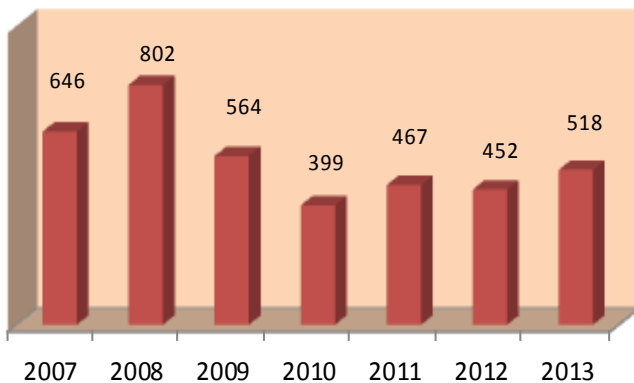
The Prevention Section's plan reviews stayed relatively flat for the second consecutive year, noting only a 1.1% increase in submittals and a 0.9% decrease in requests for inspections.

We continue to work closely with many state agencies as they look to streamline and improve their operations. Often this involves reasonable application of the adopted fire code to ensure requirements for public safety and property conservation are met, thus protecting the state's investment and assets.

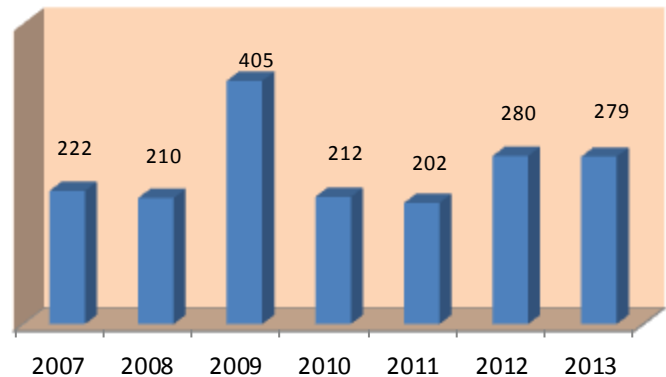
Keeping our local fire service partners informed has always been a top priority, especially with the anticipated adoption of the 2012 edition of the fire code. Our district deputies participate in local and regional fire chief organizations to relay information on statutory changes, proposed fire code requirements, and changes in the reference standards. This helps to ensure consistent application of the fire code and other regulations statewide. A large amount of time is spent returning emails and telephone calls concerning fire code-related questions for fire service agencies and citizens. We pride ourselves on providing consistent and timely responses to our customers.

In February, we welcomed Verl Jarvie to the Idaho State Fire Marshal's Office as our newest Deputy of Prevention, assigned to the District III. Verl has over 25 years of fire service experience, much of which is in prevention and administration.

Plan Reviews



Inspections



Idaho State Fire Marshal Classes

International Fire Code

This course of instruction provides exposure to the contents of the International Fire Code and is presented to fire department personnel upon request of the jurisdiction. The course is intended to provide continuity and consistency of code application throughout the state. A four-hour certification test is conducted at the end of the course.

Access and Water Supplies Code Requirements and Alternatives

This program pertains to Chapter 5 of the International Fire Code requirements for access roads and water supplies. The program provides consistent application and interpretation of the code throughout the state. The alternatives to code requirements are based on other nationally recognized standards to meet with the intent of the International Fire Code. The program is intended for fire chiefs, code officials, fire district commissioners, county commissioners, land use planners and other interested parties.

Arson Detection for the First Responder

This class provides the first responder with knowledge and awareness of the detection of possible incendiary fires.

Origin and Cause Fire Investigation

This 16-hour program is based on the National Fire Protection Association (NFPA) 921 Guide for Fire and Explosion Investigations and provides the student with basic origin and cause fire investigation knowledge and principles.

Arson Investigation and Evidence Preservation

The objective of this program is to instruct students toward a positive approach to arson investigation and prosecution by using multi-agency investigation for a successful arson case. Law enforcement agencies, the Idaho State Police Forensic Lab and the Idaho Attorney General's Office participate with the Idaho State Fire Marshal's Office to instruct this 24-hour course.

Introduction to National Fire Incident Reporting System (NFIRS)

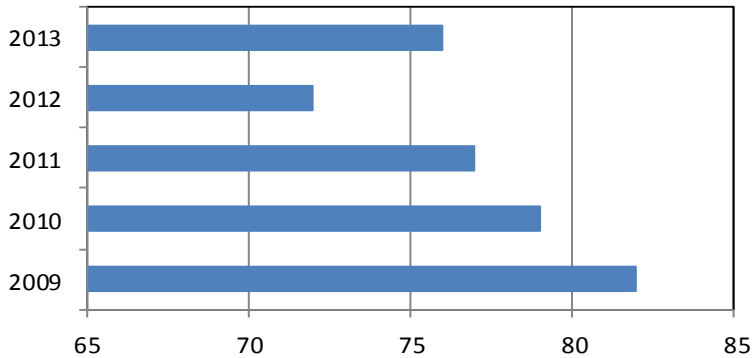
This course provides an introduction to and experience with the NFIRS 5.0 all-incident reporting system. Students learn the purposes and benefits of incident reporting at the local, state and national levels and receive a basic introduction to all modules and their uses.

Training Courses Customized to Meet Your Needs

We also offer customized training opportunities for your fire agencies. Our courses in both fire code and fire investigation can often be modified by content and length to meet your needs.

Certification and Licensing Five-Year Trend

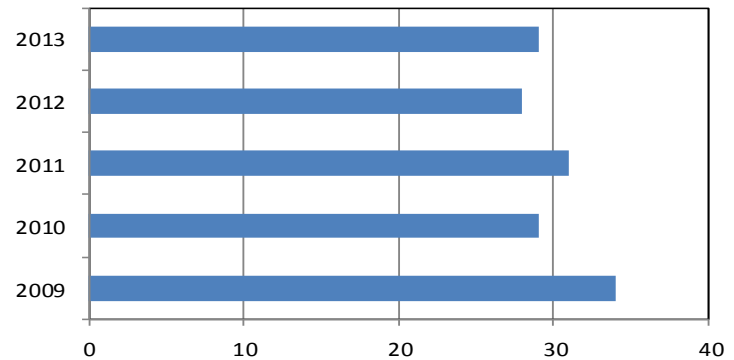
Fire Protection Sprinkler Contractor Licenses



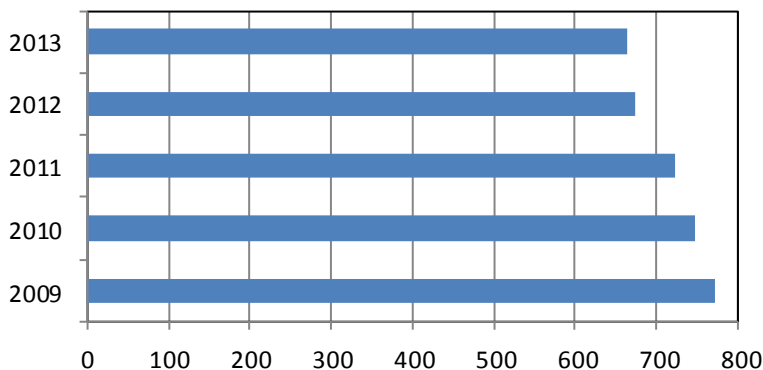
Idaho Code section 41-254 gives the State Fire Marshal the duty to license and regulate fire sprinkler contractors.

Fireworks Wholesale or Import Licenses

Idaho Code section 39-2603 requires anyone who imports or sells fireworks at wholesale to be licensed through the State Fire Marshal's Office.



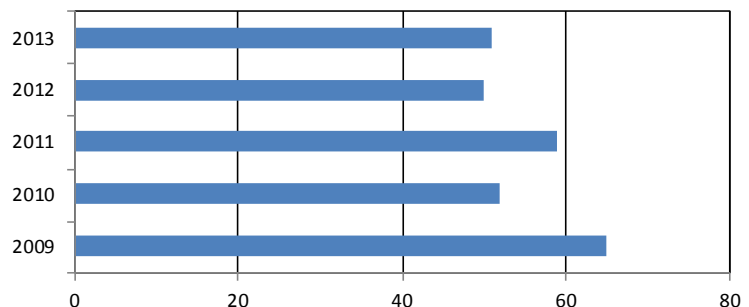
Fire Code Official Certifications



Idaho Code section 41-255(6) requires all persons acting as assistants to the State Fire Marshal (fire code officials) to be trained.

Fire Protection Sprinkler Fitter Licenses

This is a voluntary certification program established at the request of the licensed fire sprinkler contractors.





Idaho's Fire Departments Responded Every:

5.2 minutes to an incident



1.4 hours to a fire



8.4 minutes to a medical call



5.4 hours to a structure fire



1.4 hours to a false alarm



13.2 hours to a vehicle fire

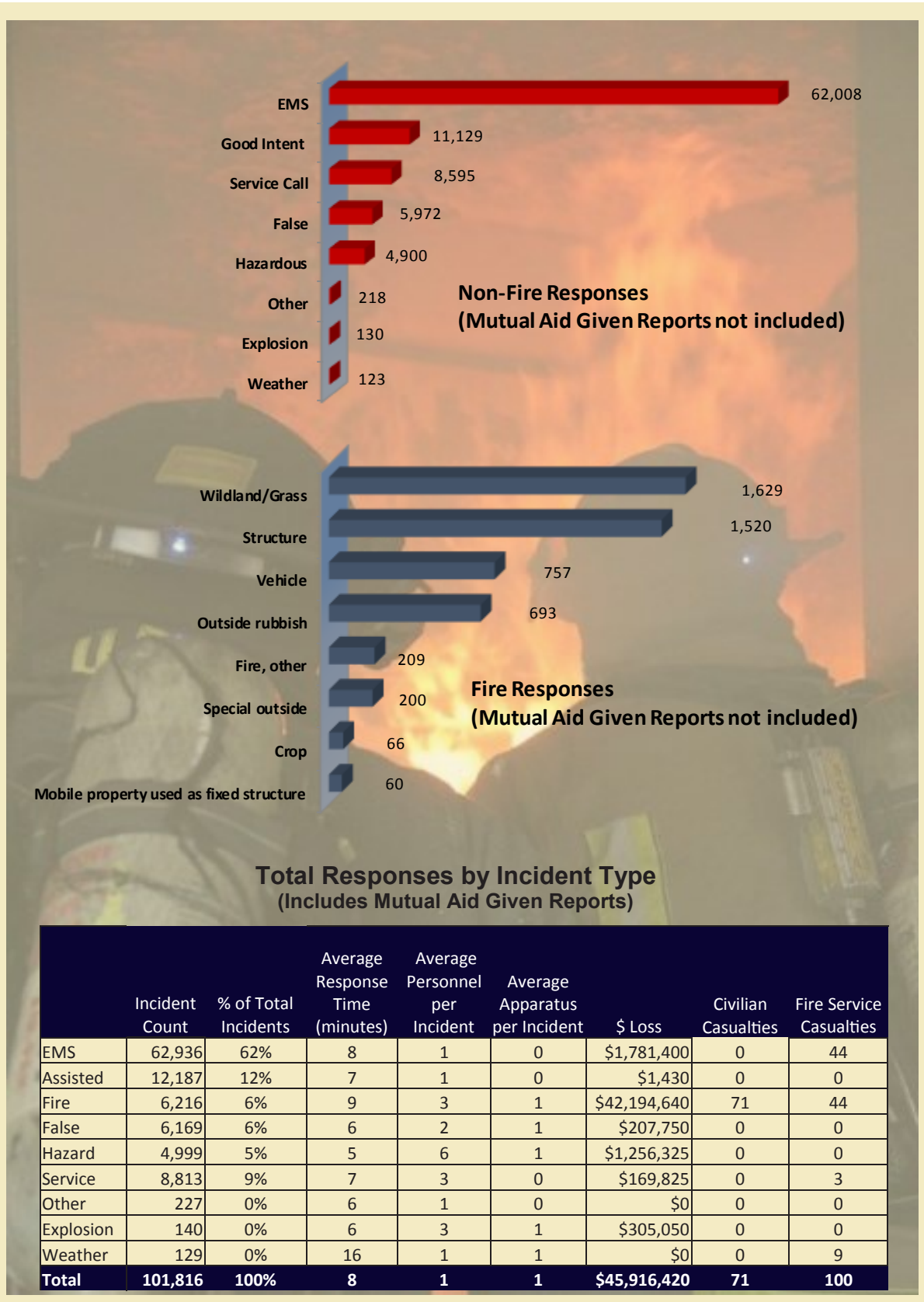


16.6 hours to an intentionally-set fire



Summary Statistics

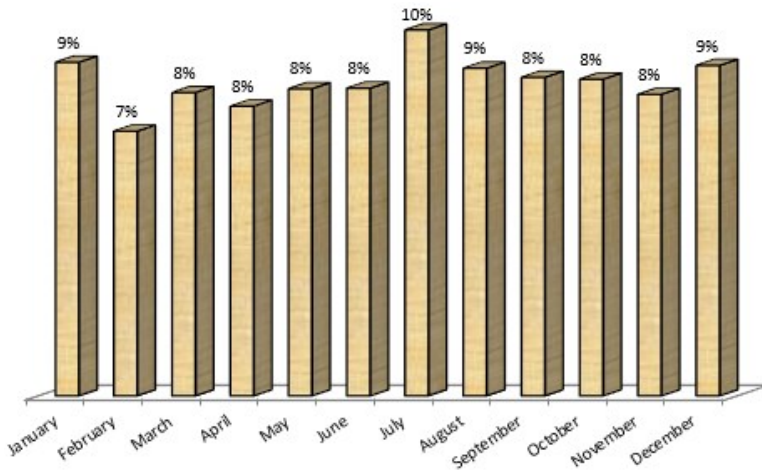
Incident Summary



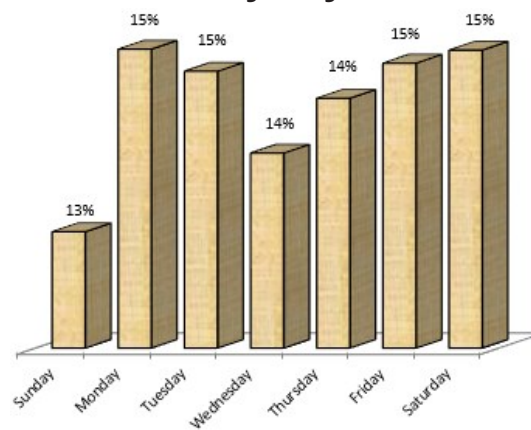
Incident Responses by Month, Day and Hour

(Includes Mutual Aid Given Reports)

Incidents by Month

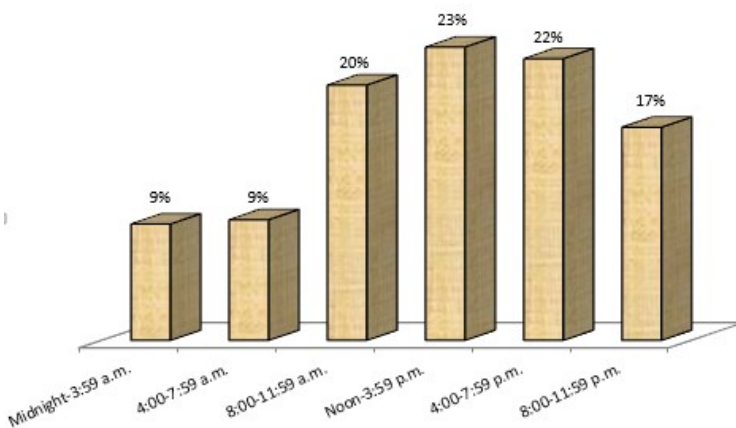


Incidents by Day



Life Flight Rescue - Valley County
Photo from Cascade Rural Fire Protection District

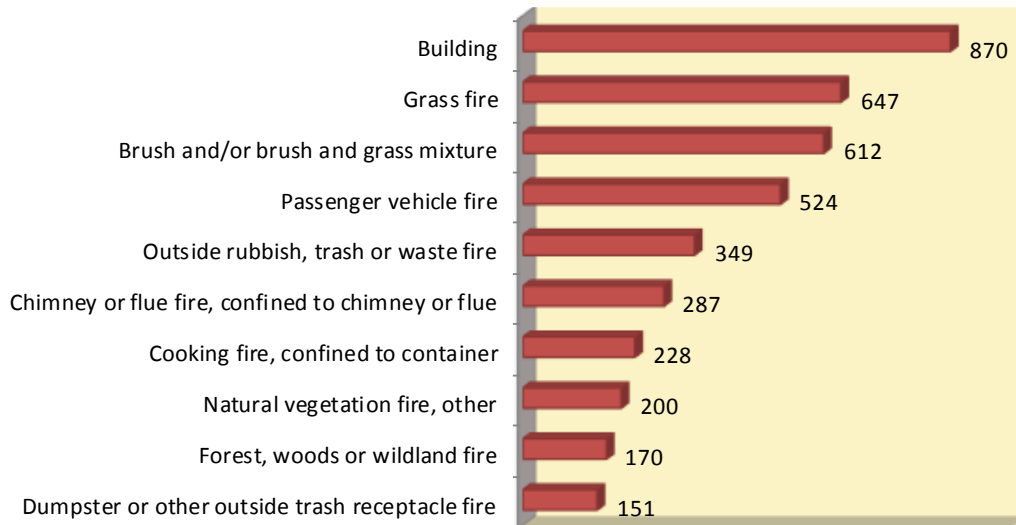
Incidents by Hour



Summary Statistics

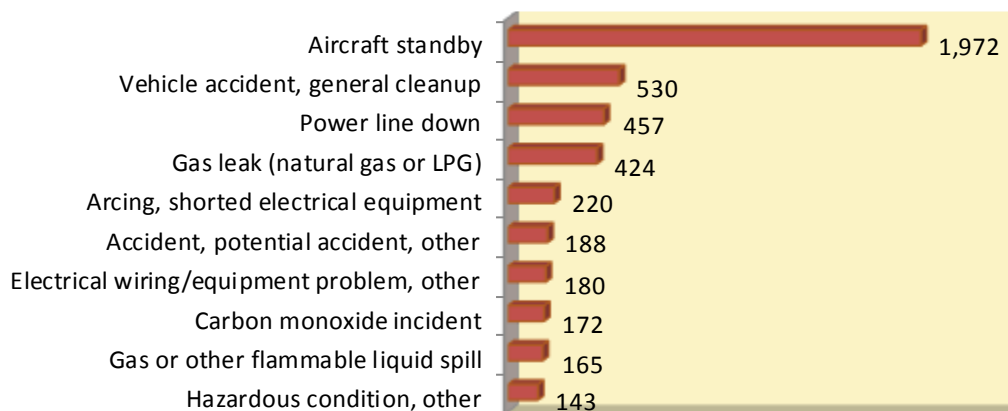
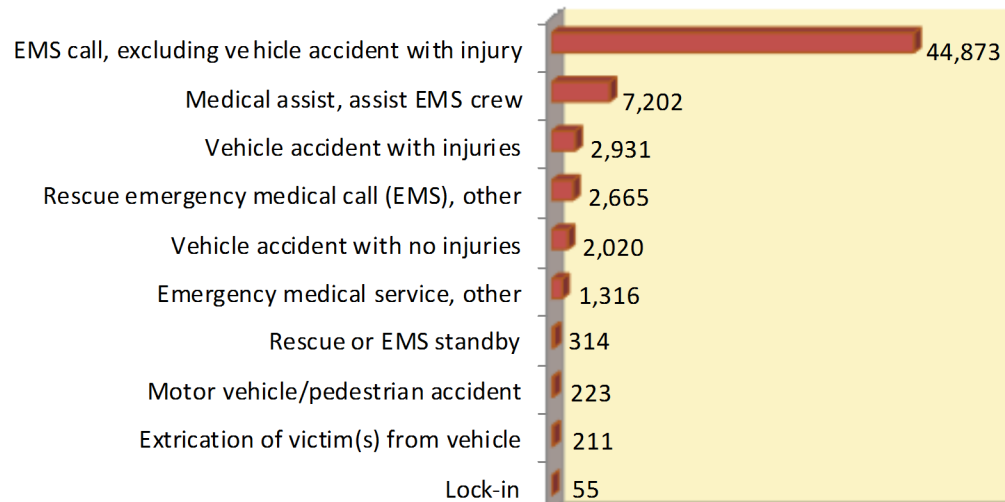
Top 10 Incident Types by Incident Categories

(Mutual Aid Given Reports not included)



Fire

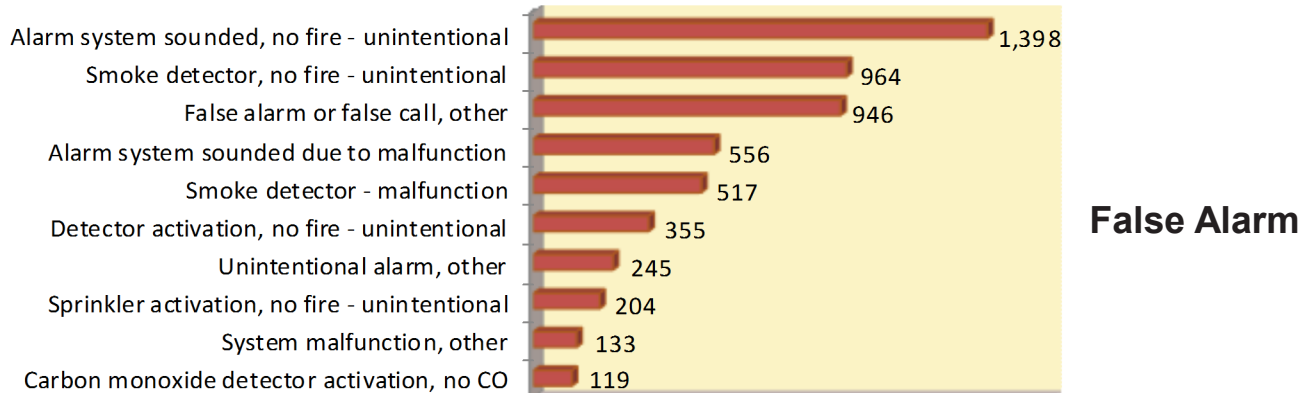
EMS



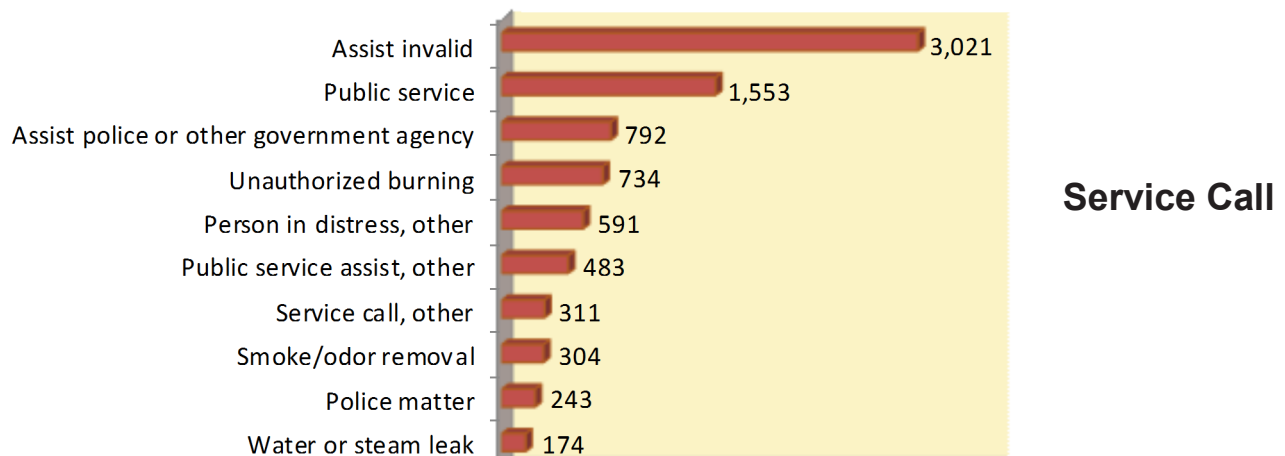
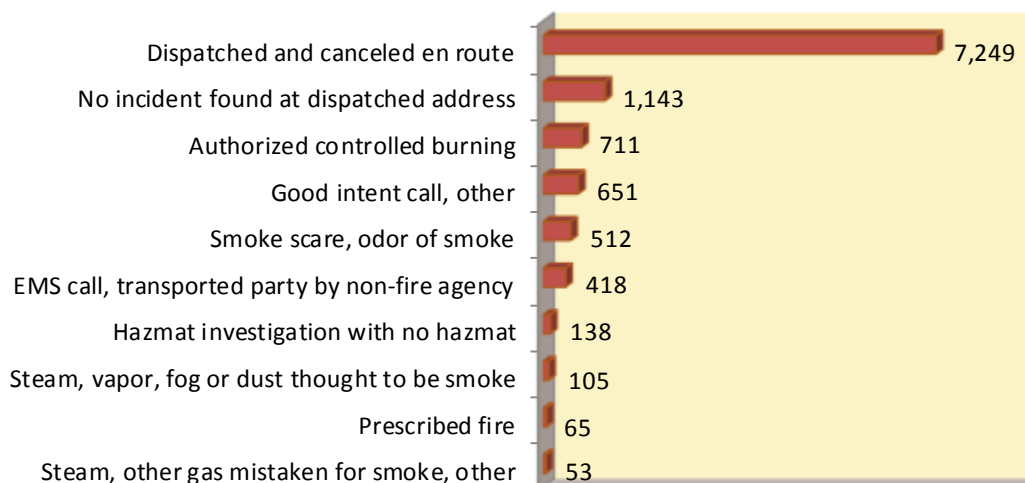
Hazardous Condition

Top 10 Incident Types by Incident Categories (cont.)

(Mutual Aid Given Reports not included)

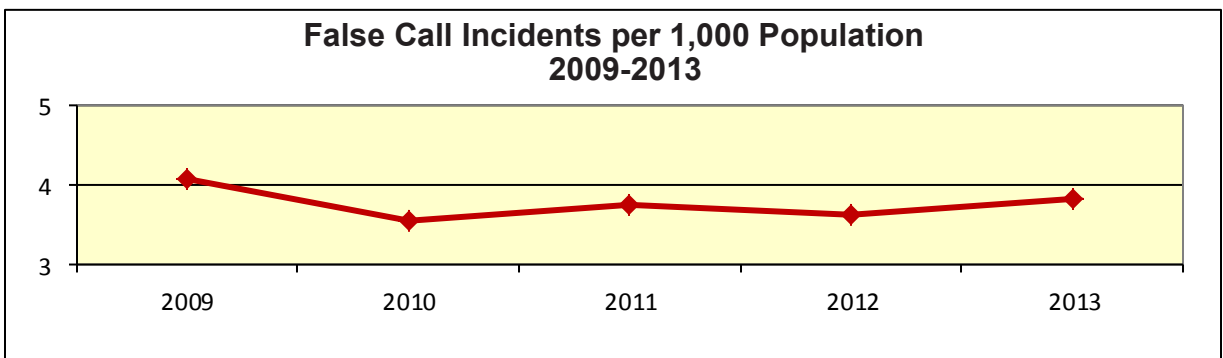
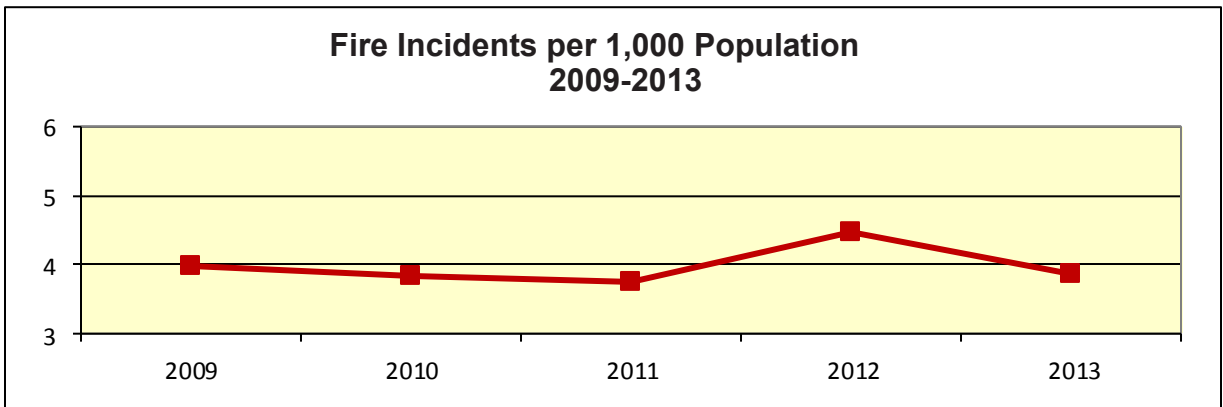
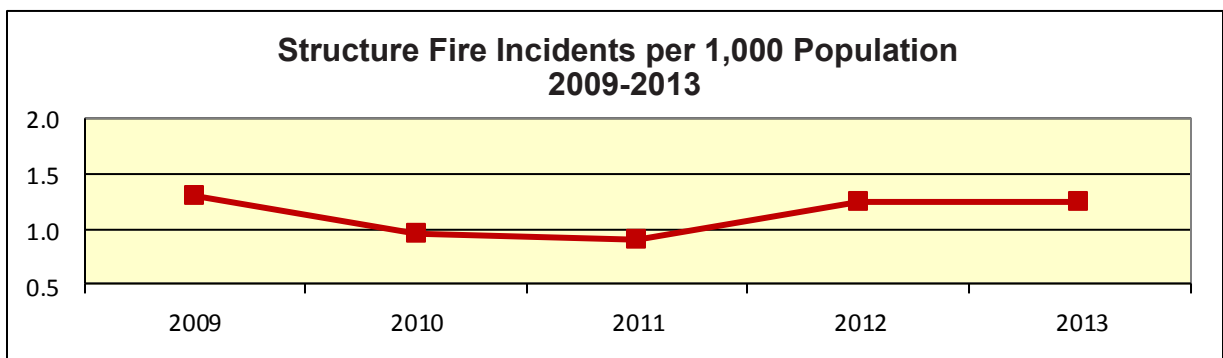
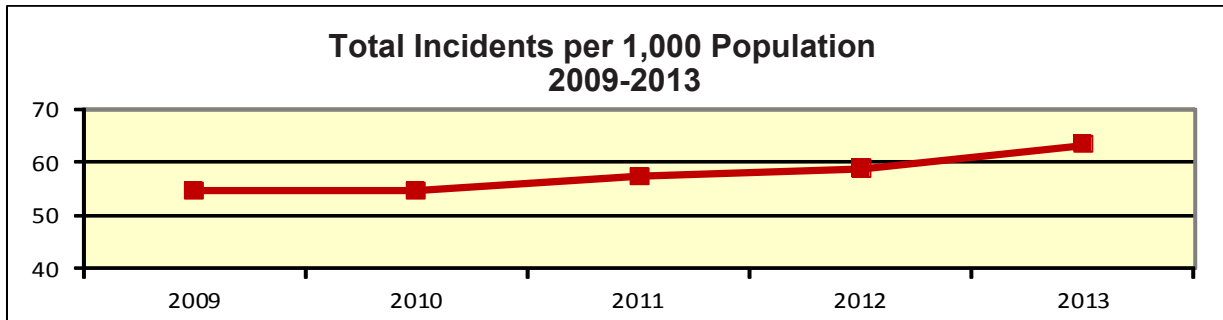


Good Intent

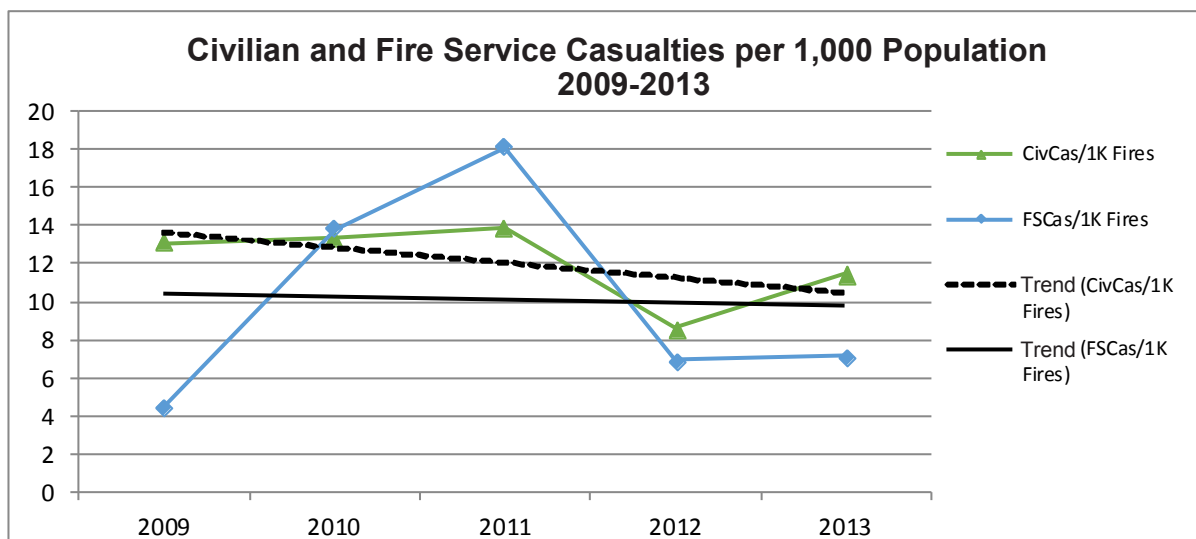
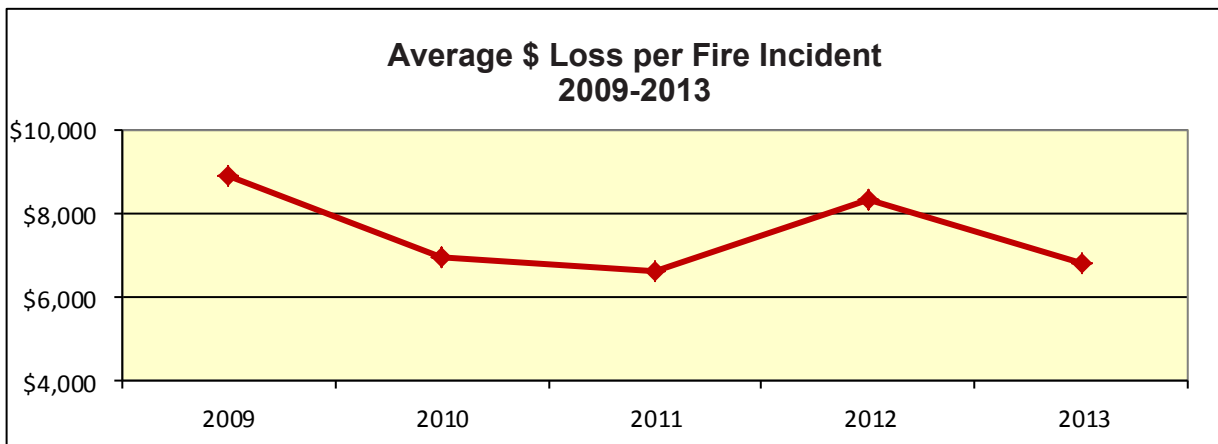
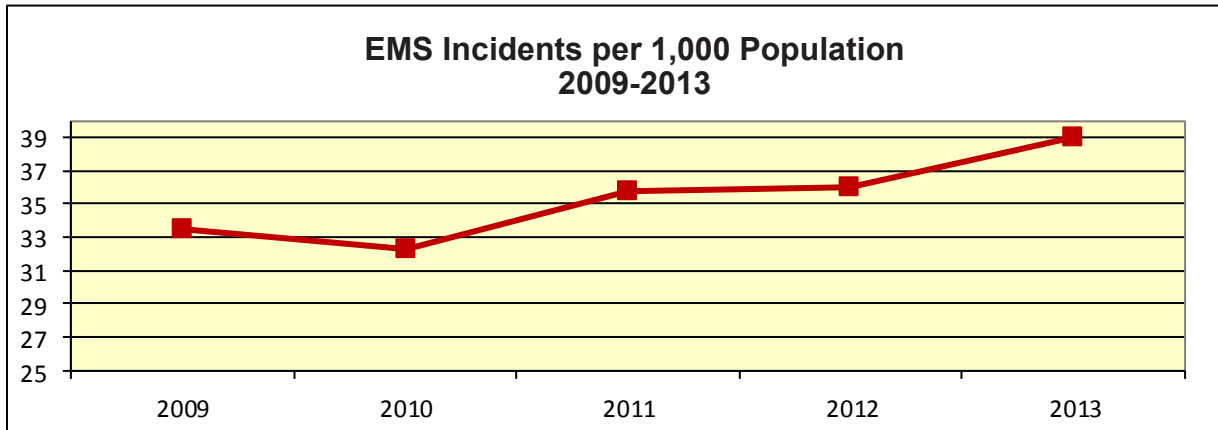


Summary Statistics

Five-Year Trends



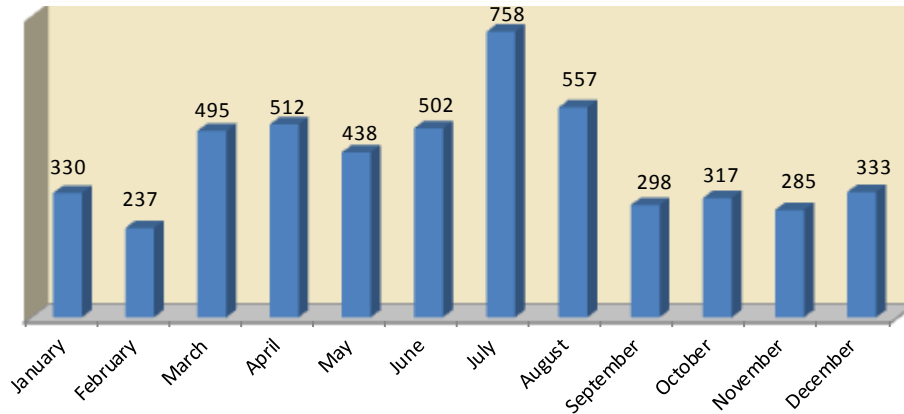
Five-Year Trends (cont.)



Summary Statistics

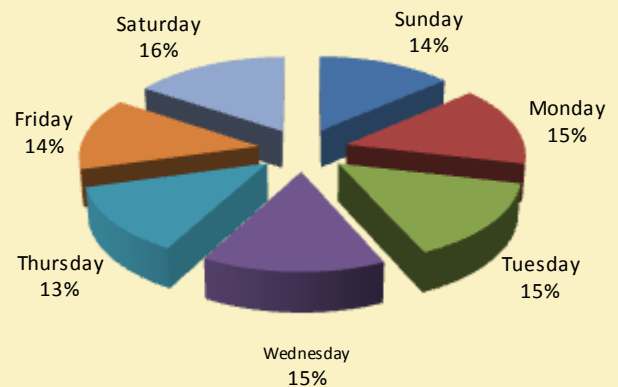
Fire Calls by Month, Day and Hour

Reported by Month

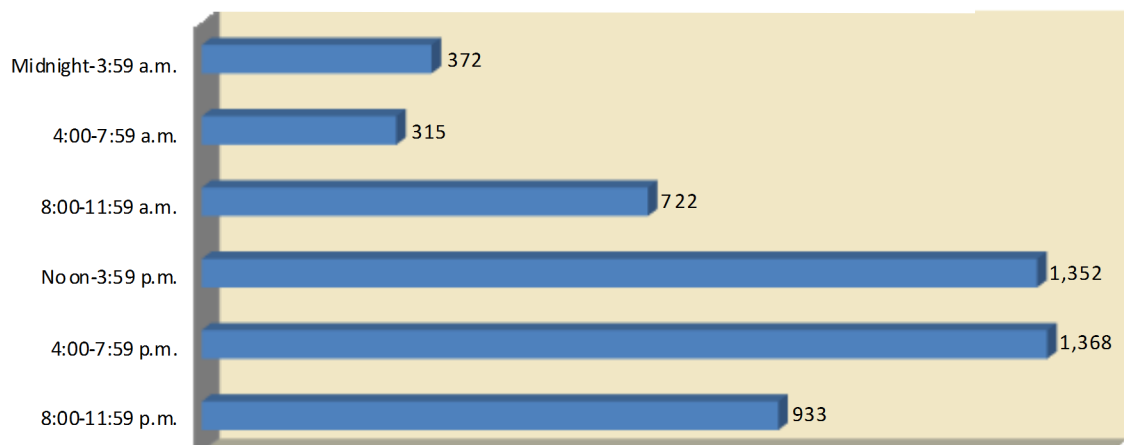


Car Fire - Washington County
Photo from Weiser Fire Department

Reported by Day of the Week



Reported by Hour of the Day



Summary Statistics

Fires in Idaho (Mutual Aid Given Reports not included)

Fire Groups	Incident Count	% of Total Fire Incidents	\$Loss	Civilian Casualties	Fire Service Casualties
Wildland/grass	1,629	32%	\$3,319,255	2	3
Structure	1,520	30%	\$30,205,106	54	31
Vehicle	757	15%	\$5,089,298	10	5
Outside rubbish	693	13%	\$235,072	0	1
Fire, other	209	4%	\$902,814	0	0
Special outside	200	4%	\$1,401,902	0	4
Crop	66	1%	\$902,178	5	0
Mobile property used as fixed structure	60	1%	\$139,015	0	0
Totals	5,134	100%	\$42,194,640	71	44



Elk Fire Complex - Elmore County
Photo from Ken Welborn, Division Chief
Meridian Fire Department

Summary Statistics

Comparisons of 2012 and 2013 County Populations and Reported Incidents

(2013 populations as of July 1, 2013, estimated by Idaho Department of Labor)

County	2013 Population	2012 Population	Difference	Total 2013 Incidents Reported	Total 2012 Incidents Reported	Difference	Total 2013 Fire Incidents Reported	Total 2012 Fire Incidents Reported	Difference
Ada	416,464	409,061	7,403	28,416	26,618	1,798	1,005	1,093	-88
Adams	3,828	3,915	-87	58	56	2	33	34	-1
Bannock	83,249	83,800	-551	7,308	7,360	-52	211	269	-58
Bear Lake	5,943	5,907	36	39	8	31	15	6	9
Benewah	9,044	9,117	-73	486	299	187	68	78	-10
Bingham	45,290	45,474	-184	711	1,050	-339	228	424	-196
Blaine	21,329	21,146	183	2,468	1,571	897	137	127	10
Boise	6,795	6,835	-40	382	354	28	73	73	0
Bonner	40,699	40,476	223	3,305	3,169	136	225	212	13
Bonneville	107,517	106,684	833	3,733	3,686	47	277	348	-71
Boundary	10,853	10,808	45	292	198	94	50	27	23
Butte	2,642	2,740	-98	40	50	-10	24	36	-12
Camas	1,042	1,077	-35	11	10	1	8	8	0
Canyon	198,871	193,888	4,983	14,370	13,950	420	846	805	41
Caribou	6,808	6,787	21	44	61	-17	29	49	-20
Cassia	23,331	23,249	82	751	576	175	81	122	-41
Clark	867	869	-2	0	0	0	0	0	0
Clearwater	8,577	8,590	-13	141	90	51	43	67	-24
Custer	4,249	4,331	-82	54	76	-22	18	19	-1
Elmore	26,170	26,223	-53	240	214	26	115	113	2
Franklin	12,854	12,786	68	142	141	1	40	61	-21
Fremont	12,927	12,957	-30	75	128	-53	43	86	-43
Gem	16,686	16,673	13	339	382	-43	145	153	-8
Gooding	15,080	15,291	-211	799	598	201	200	199	1
Idaho	16,116	16,308	-192	116	89	27	72	59	13
Jefferson	26,914	26,684	230	181	228	-47	84	83	1
Jerome	22,514	22,499	15	1,306	1,456	-150	170	245	-75
Kootenai	144,265	142,357	1,908	16,881	17,167	-286	487	547	-60
Latah	38,078	38,184	-106	977	1,141	-164	142	148	-6
Lemhi	7,712	7,758	-46	52	121	-69	13	83	-70
Lewis	3,902	3,889	13	95	47	48	44	12	32
Lincoln	5,315	5,277	38	0	28	-28	0	14	-14
Madison	37,450	37,456	-6	544	527	17	102	148	-46
Minidoka	20,292	20,037	255	724	953	-229	106	276	-170
Nez Perce	39,915	39,531	384	7,573	2,535	5,038	183	109	74
Oneida	4,275	4,215	60	2	14	-12	2	12	-10
Owyhee	11,472	11,439	33	192	186	6	102	93	9
Payette	22,610	22,639	-29	800	836	-36	169	165	4
Power	7,719	7,778	-59	68	13	55	30	7	23
Shoshone	12,690	12,702	-12	1,463	1,304	159	82	50	32
Teton	10,275	10,052	223	412	418	-6	50	48	2
Twin Falls	79,957	78,595	1,362	4,444	4,293	151	295	403	-108
Valley	9,606	9,545	61	1,561	1,478	83	81	93	-12
Washington	9,944	10,099	-155	181	217	-36	76	108	-32
TOTALS	1,612,136	1,595,728	16,408	1,579,320	93,696	1,485,624	6,204	7,112	-908

Fire Stations Across Idaho



Westside Fire Protection District
Dover Station



Shoshone County Fire District 1
Osburn Station



Robie Creek Volunteer Fire Department



Island Park Fire Department
Station 1 - Macks Inn



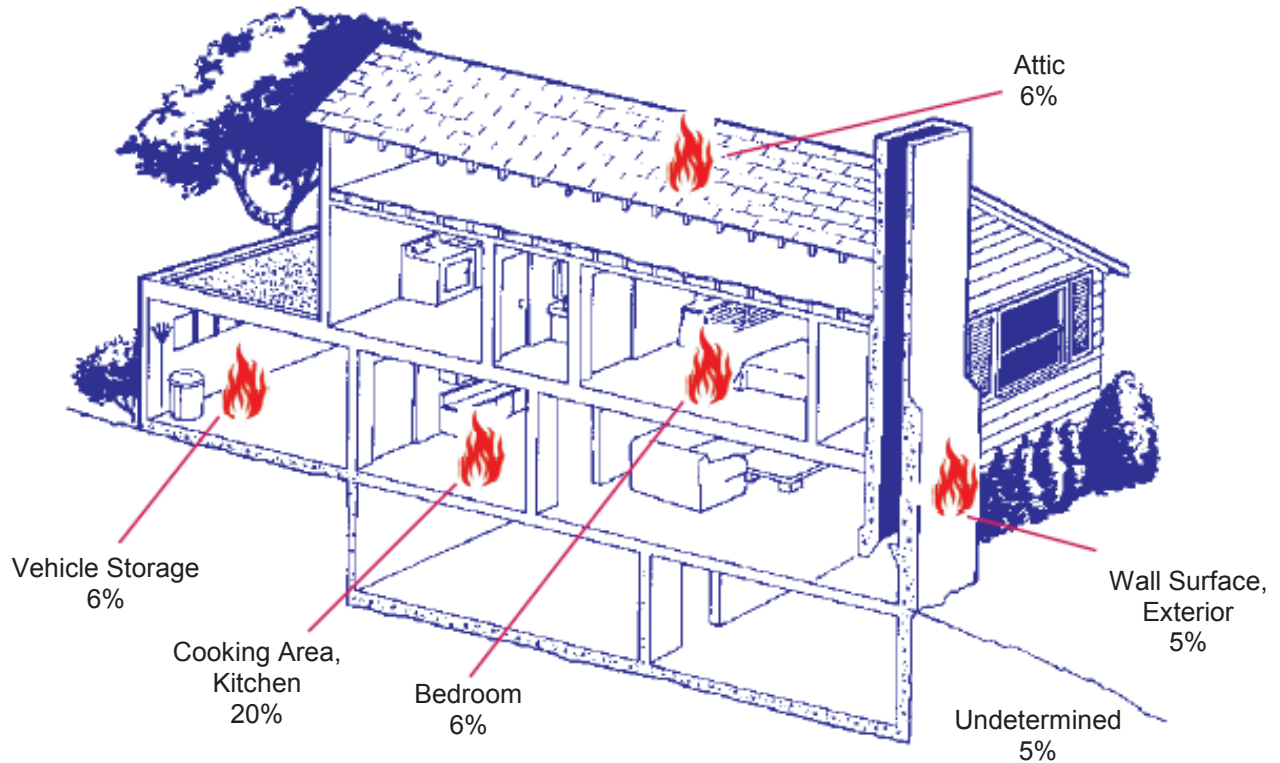
Glenns Ferry Fire Department



Dubois City Fire Department

Structure Fires

Top 6 Identified Areas of Origin for Residential Structures in 2013



Most Frequent Residential Structure Fire Areas of Origin (Mutual Aid Given Reports not included)

	Incident Count	% of Total Res Structure Fire Incidents	Response Time (minutes)	\$ Loss	% of Total \$ Loss	Civ Cas	% of Total Civ Cas	Fire Svc Cas	% of Total Fire Svc Cas
Cooking area, kitchen	168	20%	6	\$2,094,848	10%	12	24%	0	0%
Bedroom - less than 5 persons	54	6%	6	\$1,917,854	9%	6	12%	0	0%
Vehicle storage area: garage, carport	53	6%	6	\$2,751,983	12%	3	6%	3	15%
Attic: vacant, crawl space above top story, cupola	51	6%	9	\$1,273,200	6%	1	2%	1	5%
Undetermined	45	5%	12	\$3,392,550	15%	8	16%	1	5%
Wall surface, exterior	43	5%	7	\$313,000	1%	0	0%	4	20%
Wall assembly	43	5%	6	\$803,710	4%	0	0%	2	10%
Function area, other	35	4%	8	\$1,803,050	8%	3	6%	1	5%
Common room, den, family room, lounge	30	4%	9	\$782,920	4%	3	6%	2	10%
Ceiling and floor assembly, crawl space between floors	28	3%	10	\$708,700	3%	0	0%	1	5%
Totals of Most Frequent Residential Structure Fire Areas of Origin	550	66%	8	\$15,841,815	72%	36	71%	15	75%
Total Residential Structure Fire Incidents	836		7	\$22,033,373		51		20	



Trailer Fire
Payette County
Photo from Payette
Rural Fire Department

Residential Structure Fire Spread - Contained in Room of Origin

(Mutual Aid Given Reports not included)



“Contained fire” is defined as fire spread that is reasonably expected to remain in check under prevailing conditions.

	Incident Count	% of Total Incidents	\$ Loss	% of Total Loss	Civ Cas	% of Total Civ Cas	Fire Svc Cas	% of Total Fire Svc Cas
Not Contained	435	62%	\$19,259,509	88%	30	60%	20	91%
Contained	265	38%	\$2,601,201	12%	20	40%	2	9%
Total	700		\$21,860,710		50		22	

Residential Structure Fires - Confined/Not Confined Fires Building/Fixed Mobile Property Incidents

(Mutual Aid Given Reports not included)



“Confined fires” are defined as fires where the flame does not extend beyond a non-combustible container. Stove top, trash can and chimney fires are examples of confined fires.

	Incident Count	% of Incident Count	\$ Loss	% of Total Loss	Civ Cas	% of Total Civ Cas	Fire Svc Cas	% of Total Fire Svc Cas
Not Confined	697	58%	\$25,918,161	99.75%	50	96%	23	100%
Confined	501	42%	\$65,253	0.25%	2	4%	0	0%
Total	1,198		\$25,983,414		52		23	

Structure Fires

Reported Dollar Large Loss Structure Fire Events

(\$500,000 or more)

Estimated Property/Contents Dollar Losses	Date	Location	Responding Fire Department	Incident Type/ Property Use	Heat Source/ Cause of Fire
\$2,092,000	August 2013	Ketchum	Ketchum Fire Department	Natural vegetation fire, other/ Open land or field	Lightning/ Natural source
\$1,000,000	April 2013	Jerome	City of Jerome Fire Department	Building fire/ Mixed use property	Undetermined/ Cause under investigation
\$1,000,000	April 2013	Wendell	Wendell City Fire Department	Trestle fire/ Railroad right of way	Heat spread from another fire/ Unintentional
\$760,000	December 2013	Coeur d'Alene	Coeur d'Alene Fire Department	Building fire/Mercantile, business, other-Mixed use	Undetermined/ Cause under investigation
\$570,000	July 2013	Donnelly	Donnelly Rural Fire Protection District	Building fire/ Outbuilding or shed	Flame-torch used for lighting/ Intentional
\$552,400	December 2013	Priest River	West Priest Lake Fire District	Building fire/ 1- or 2-family dwellings	Undetermined/ Cause under investigation
\$500,000	August 2013	Grace	Caribou County Fire Department	Fire, other/ Livestock, poultry storage	Lightning/ Unintentional
\$500,000	May 2013	Grangeville	Grangeville Rural Fire Department	Manufacturing, processing	Undetermined/ Cause under investigation



Grain Elevator Fires - Lewis County
Photo from Craigmont Fire Department

Structure Fires by Property Use

(Mutual Aid Given Reports not included)

	Incident Count	% of Total Structure Fire Incidents	Response Time (minutes)	\$ Loss	% of Total Structure Fire \$ Loss	Civ Cas	% of Total Structure Fire Civ Cas	Fire Svc Cas	% of Total Structure Fire Fire Svc Cas
Residential	1,216	77%	8	\$22,210,738	69%	53	90%	23	74%
Storage	129	8%	9	\$2,648,696	8%	0	0%	6	19%
Outside/special property	69	4%	7	\$1,270,700	4%	0	0%	0	0%
Business	54	3%	6	\$2,387,780	7%	4	7%	0	0%
Manufacturing	24	2%	6	\$1,316,400	4%	0	0%	0	0%
Assembly	32	2%	6	\$992,960	3%	0	0%	0	0%
Health care/jail	22	1%	6	\$53,910	0%	2	3%	0	0%
Industry/utility/defense	18	1%	8	\$178,200	1%	0	0%	0	0%
Educational	11	1%	9	\$117,100	0%	0	0%	2	6%
Other	5	0%	4	\$1,000,800	3%	0	0%	0	0%
None	1	0%	14	\$0	0%	0	0%	0	0%
Total Structure Fires	1,581		8	\$32,177,284		59		31	

As in 2012, residential fires accounted for 77% of all structure fire incidents reported in 2013. The estimated dollar loss for residential fires was 69% of the total losses reported for all structure fires, a 16% decrease from 2012 figures. (The estimated loss of reported structure fires does not include a major loss of a grain elevator complex that occurred in May in Craigmont.)

The overall number of structure fires reported in 2013 was nearly the same as in 2012. The number of residential fires was nearly the same as reported in 2012, but the loss value of the 2013 fires decreased by 2% .

The National Fire Incident Reporting System describes “residential” as a building or a structure providing living or sleeping accommodations. “Structure” is defined as an assembly of materials forming a construction for occupancy or use to serve a specific purpose. This includes, but is not limited to, buildings, open platforms, bridges, roof assemblies, tents, air-supported structures and grandstands.



House Fire - Caribou County
Photo from Soda Springs Fire Department

2013 Structure Fires by Property Use

NFIRS Code	Property Use	# of Structure Fires
<u>Residential Property Uses</u>		
400	Residential, other	38
419	1- or 2-family dwelling, detached, manufactured home, mobile home not in transit, duplex	1,012
429	Multi-family dwelling - includes apartments, condos, townhouses, row houses, tenements	116
439	Boarding/rooming house - includes residential hotels and shelters	5
449	Hotels/motels, commercial	7
459	Resident board and care	4
460	Dormitory type residence, other	3
462	Sorority house, fraternity house	12
464	Barracks, dormitory	15
<u>Public Property Uses</u>		
	Assembly	32
	Educational	11
	Health care, detention and correction	22
	Mercantile, business	54
	Property use, other	5
<u>Other Property Uses</u>		
600	Utility, defense, agriculture, mining, other	1
640	Utility or distribution system, other	1
642	Electrical distribution	8
647	Water utility - includes collection, treatment, storage and distribution of water	2
648	Sanitation utility - includes incinerators and industrial rubbish burners	1
659	Livestock production	5
700	Manufacturing, processing - includes properties where there is mechanical or chemical transformation of inorganic or organic substance into new products; factories making products of all kinds and properties devoted to operations such as processing, assembling, mixing, packing, finishing or decorating and repairing	24
800	Storage, other	5
807	Outside material storage area	3
808	Outbuilding or shed - includes tools and contractor sheds; excludes contractor field offices	86
819	Livestock, poultry storage - includes barns, stockyards, and animal pens	7
880	Vehicle storage, other - includes airplane and boat hangers; excludes parking garages	6
881	Parking garage, detached residential garage - includes detached parking structures associated with multi-family housing	13
888	Fire Station	1
891	Warehouse - includes all general storage facilities	6
899	Residential or self-storage units - includes mini-storage units	2
900	Outside or special property, other	6
919	Dump, sanitary landfill, includes recycling collection points	1
921	Bridge, trestle	1

2013 Structure Fires by Property Use (cont.)

NFIRS Code	Property Use	# of Structure Fires
926	Outbuilding, protection shelter - includes toll booths, weather shelters, mailboxes, telephone booths, privies, charitable collection boxes and aerial tramways; excludes parking garages	13
937	Beach	1
938	Graded and cared-for plots of land - includes parks, cemeteries, golf courses and residential yards	8
960	Street, other	3
961	Highway or divided highway - includes limited-access highways with few intersections or at grade crossings	1
962	Residential street, road or residential driveway	5
963	Street or road in commercial area	3
965	Vehicle parking area - includes paved non-residential driveways; excludes parking garages	5
981	Construction site	1
983	Pipeline, power line or other utility right of way	6
NNN	None	2
UUU	Undetermined	1



Training Fire - Bannock County
Photo from Pocatello Fire Department

Fire Stations Across Idaho



West Priest Lake Fire Department
Lamb Creek Station



Shoshone City Rural Fire District
Station 1



Madison Fire Department
Station 2



Indian Valley Rural Fire Department
Mesa Station



Gem County Fire Protection District 2
Ola Station



Dietrich Rural Fire Department
Fire in Idaho 2013

Fire Stations Across Idaho



West Pend Oreille Fire Department
Station 3



Salmon Tract Volunteer Fire Department
Hollister Station



Lapwai Fire Department



Franklin County Fire District
Station 2 - Dayton



Idaho Falls Fire Department
Station 4 - Woodruff Avenue

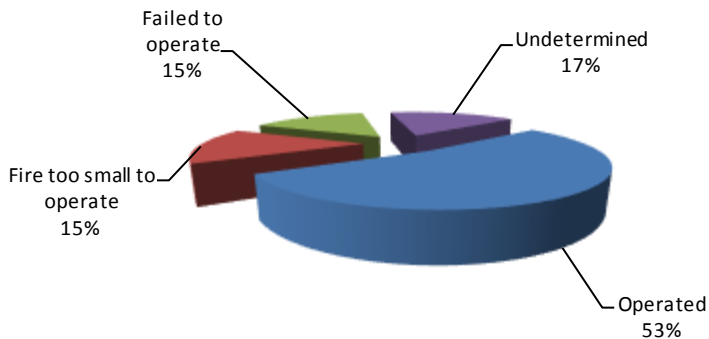


Centerville Volunteer Fire Department

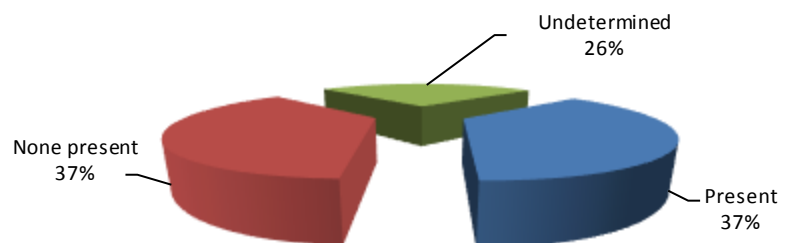
Smoke Detector Performance

(Mutual Aid Given Reports not included)

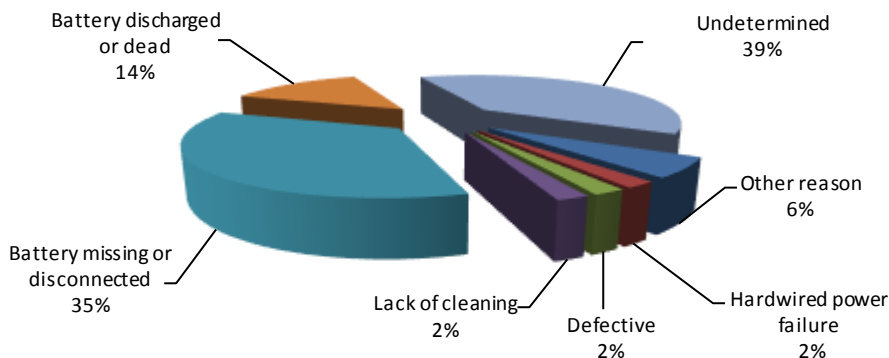
Detector Operation When Present



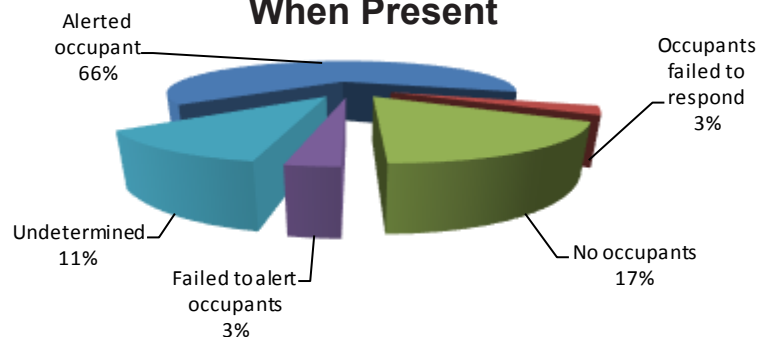
Detector Present



Detector Failure



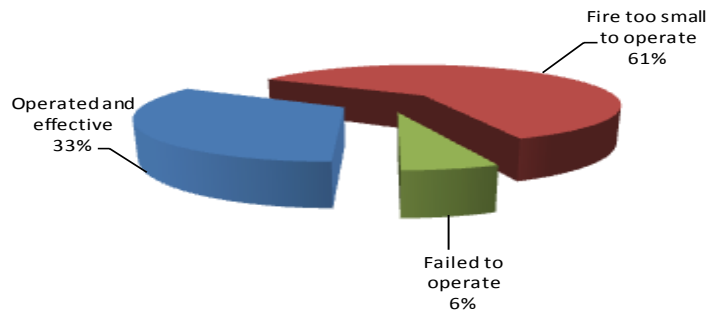
Detector Effectiveness When Present



Automatic Extinguishing Systems (AES)

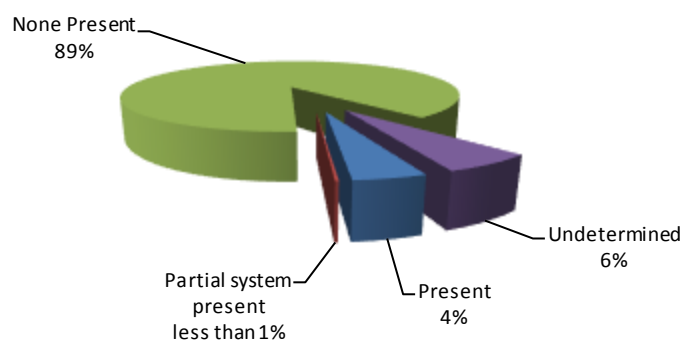
(Mutual Aid Given Reports not included)

AES Operated



The one reported AES failure occurred when the system was partially present but the fire was not in the area protected by the system.

AES Present

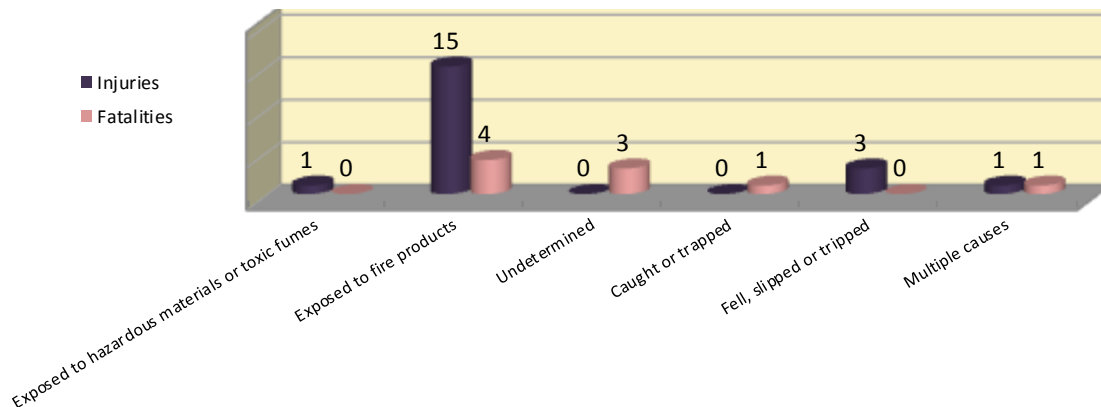


Civilian Fire Casualties

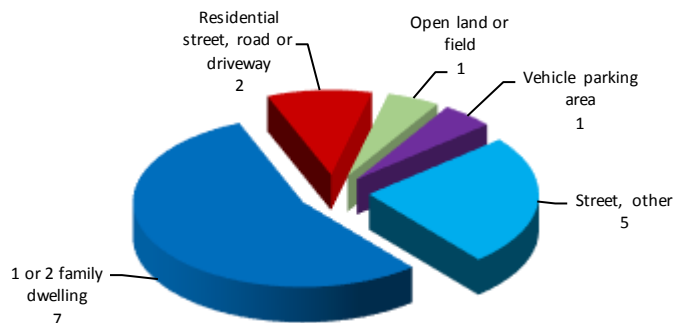
Injuries and Fatalities

“Civilian Fire Casualty” means a person who is injured or dies as the direct result of a fire-related incident. The term civilian includes, but is not limited to, private citizens, emergency medical service responders (not fire department personnel) and police.

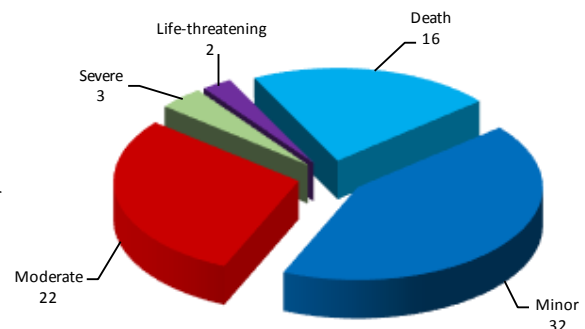
Civilian Fire Casualties by Cause of Injury



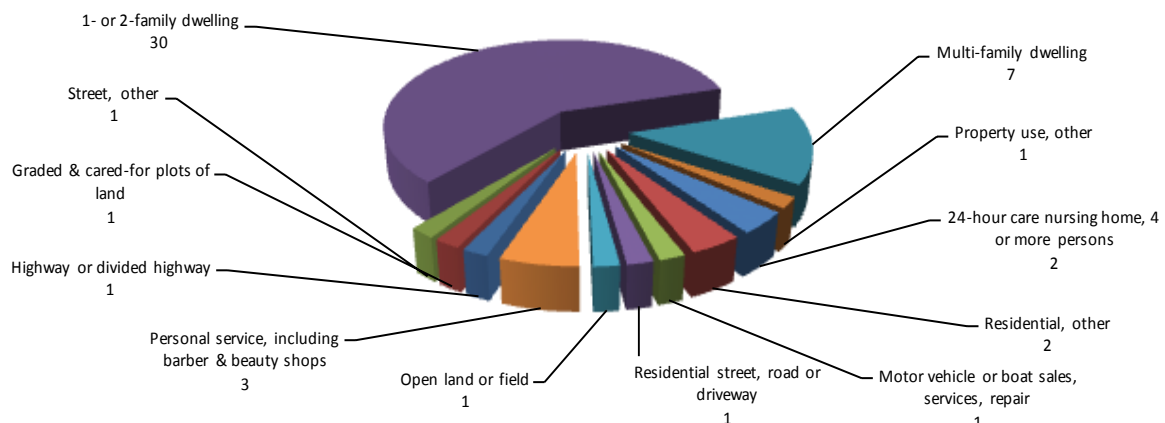
Civilian Fire Fatalities by Property Use



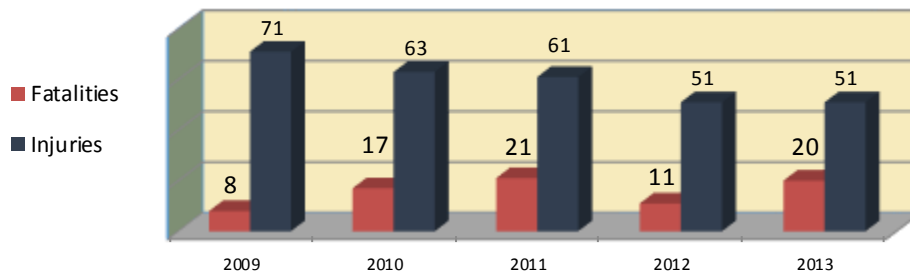
Civilian Fire Casualties by Severity



Civilian Fire Injuries by Property Use



Civilian Fire Casualties for Last Five Years

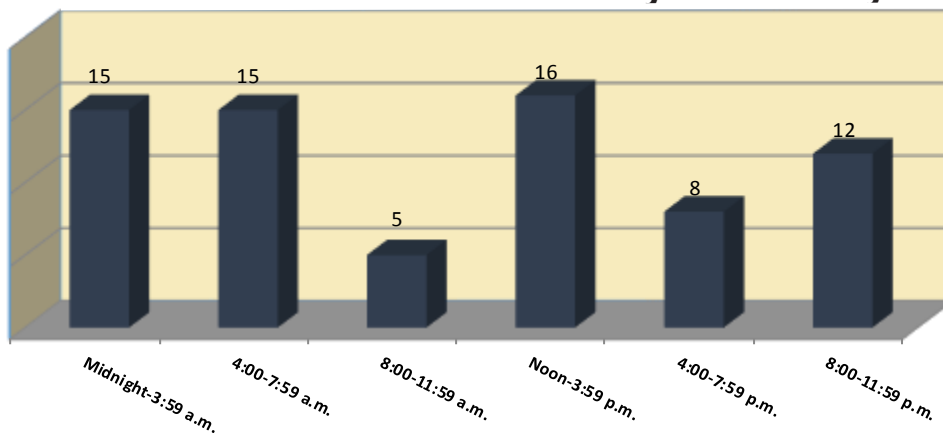


Extinguisher Training - Annual Open House - Kootenai County
Photo from Coeur d'Alene Fire Department



Firefighters Visit School - Washington County
Photo from Weiser Fire Department

2013 Civilian Fire Casualties by Hour of Day



2013 Civilian Fire Fatalities

1/5/2013

Male – 30 years old

Gooding County

Passenger vehicle fire

Street, other

Cause undetermined after investigation

3/24/2013

Male – 20 years old

Shoshone County

Passenger vehicle fire

Street, other

Cause under investigation

4/11/2013

Female – 67 years old

Jerome County

Building fire

Multi-family dwelling

Cause under investigation

4/13/2013

Male – 31 years old

Female – 39 years old

Male – 17 years old

Male – 13 years old

Male – 13 years old

Clearwater County

Building fire

1-or 2-family dwelling

Unintentional

5/1/2013

Female – 65 years old

Canyon County

Building fire

1-or 2-family dwelling

Unintentional

5/15/2013

Female - age not available

Power County

Road freight or transport vehicle fire

Property use not available

Unintentional

6/22/2013

Male – 18 years old

Female – 17 years old

Male – 17 years old

Idaho County

Passenger vehicle fire

Street, other

Cause under investigation

8/5/2013

Female – 54 years old

Twin Falls County

Building fire

1-or 2-family dwelling

Cause under investigation

8/30/2013

Female – 33 years old

Shoshone County

Building fire

1-or 2-family dwelling

Cause under investigation

10/1/2013

Male – 61 years old

Jerome County

Building fire

1-or 2-family dwelling

Failure of equipment or heat source

10/8/2013

Male – 65 years old

Bonner County

Structure fire

Residential, other

Cause not entered

12/7/2013

Female – 51 years old

Bonneville County

Building fire

Multi-family dwelling

Cause under investigation

12/10/2013

Female – 74 years old

Twin Falls County

Building fire

1-or 2-family dwelling

Unintentional

12/30/2013

Female – 73 years old

Bonner County

Building fire

1-or 2-family dwelling

Cause under investigation

Fire Stations Across Idaho



South Boundary Fire Protection District
Station 1 - Naples



Rockland Rural Fire District



Kamiah Fire Department and
Rural Fire Protection District



Hauser Lake Fire Protection District



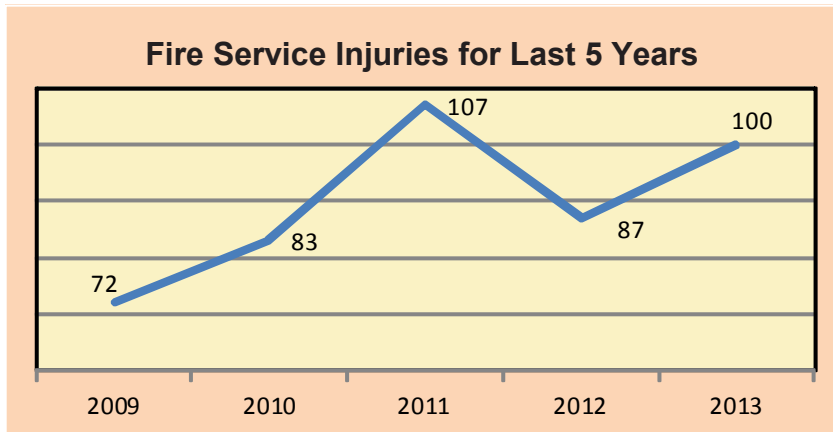
East Side Fire District
Station 3 - East Point



Ace Fire Protection District

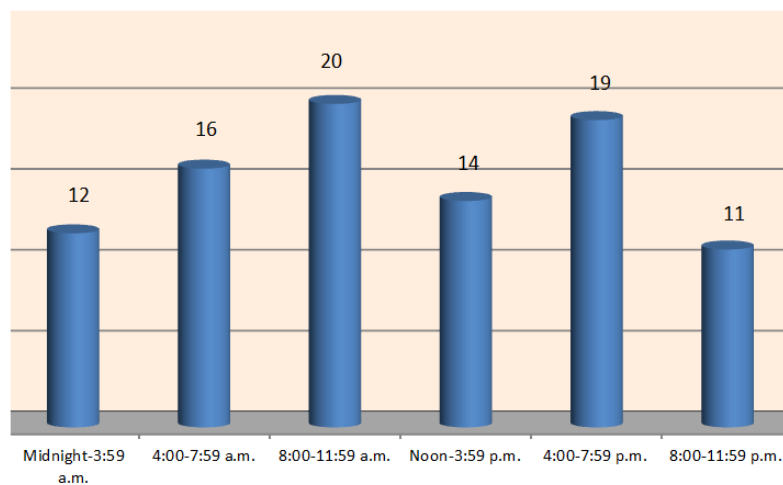
Fire Service Casualties

Fire Service Injuries



No fire service fatalities have been reported for the last nine years.

Fire Service Injuries by Time of Day

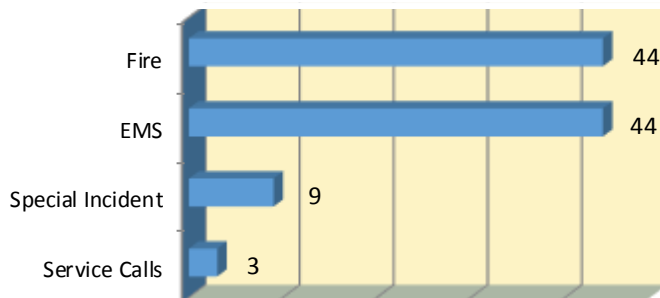


Fire Service Injuries When Fire is Confined in Room of Origin

	Incident Count	% of Total Structure Fire Incidents	\$ Loss	% of Total Loss	Fire Svc Cas	% of Total FS Cas
Not Confined	1,159	2%	\$26,044,436	84%	29	94%
Confined	421	27%	\$5,062,848	16%	2	6%
Total Structure Fire Incidents	1,580		\$31,107,281		31	

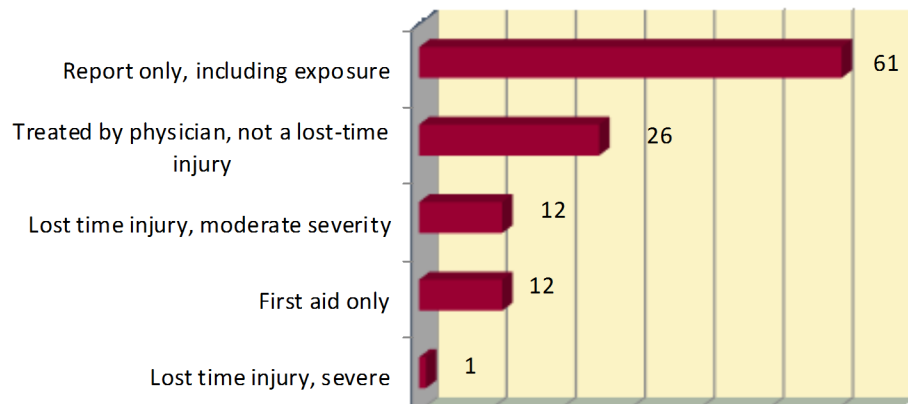
Fire Service Injuries

Fire Service Injuries by Incident Type

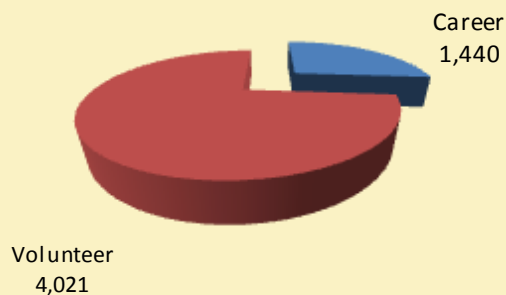


“Fire Service Casualties” are all injuries, deaths or exposures to fire service personnel including casualties occurring in conjunction with both incident responses and non-incident events such as station duties or training.

Fire Service Injuries by Severity of Injuries



Career and Volunteer Fire Service in Idaho



Thank You Sign - Idaho County
Photo by Tom Mroz, Deputy, State Fire Marshal's Office

Training



Equipment Training - Eastern Idaho Fire Academy
Photo by Knute Sandahl, Chief Deputy,
State Fire Marshal's Office



Trench Rescue Training - Bannock County
Photo from Pocatello Fire Department



Controlled Live Fire Training
Eastern Idaho Fire Academy
Photo by Knute Sandahl, Chief Deputy,
State Fire Marshal's Office



Hose Competition - Gem County
Photo by Knute Sandahl, Chief Deputy,
State Fire Marshal's Office

Fire Stations Across Idaho



Twin Ridge Fire District



Kootenai County Fire and Rescue
Training Tower



Boise Fire Department
Station 1 - Reserve Street



Salmon River Rural Fire Department
Station 3 - Rapid River



Idaho Department of Lands
Ponderosa Fire Protection District



First Segregation Fire District

The Importance of Data Quality Control in Fire Department Incident Reporting

The incident report is a legal record.

The incident report must accurately reflect the event.

The incident date is used at local, state and national levels.

The incident report is not static. Details of the report can and should be updated as more information becomes available due to further investigations by the fire department. The incident report should be revised whenever the conditions or facts of the incident change.

Reporting errors are grouped into two categories: critical and warning.

Critical Error – Data is required and must be provided in the report to allow the report to be complete or valid. A report with a critical error is marked as an invalid incident.

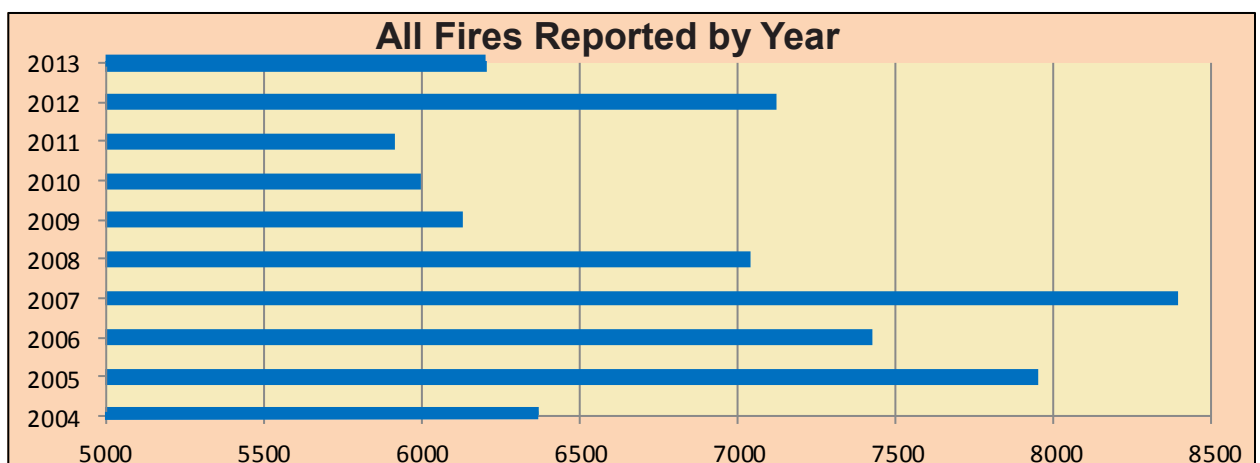
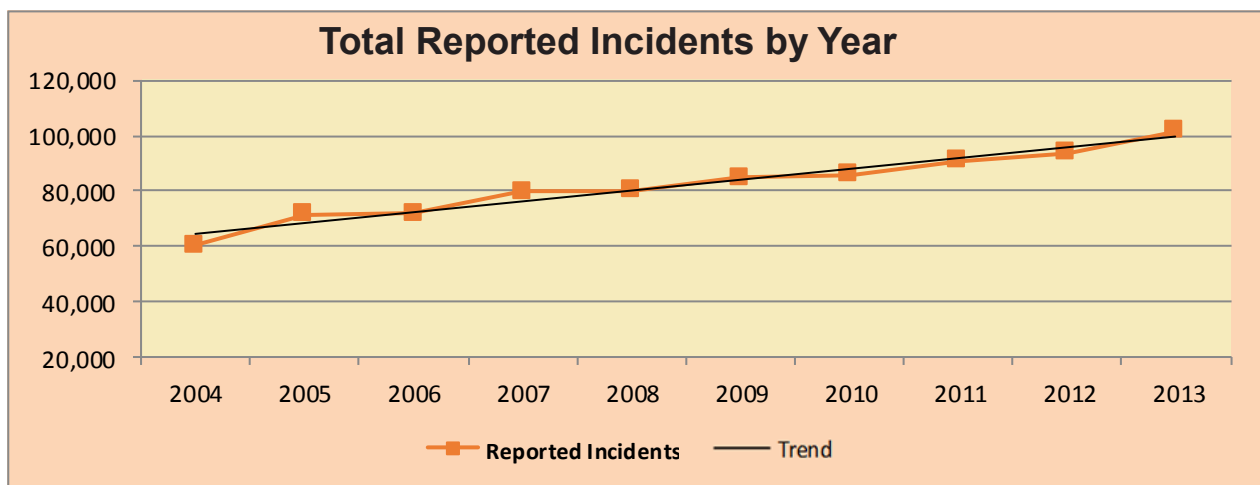
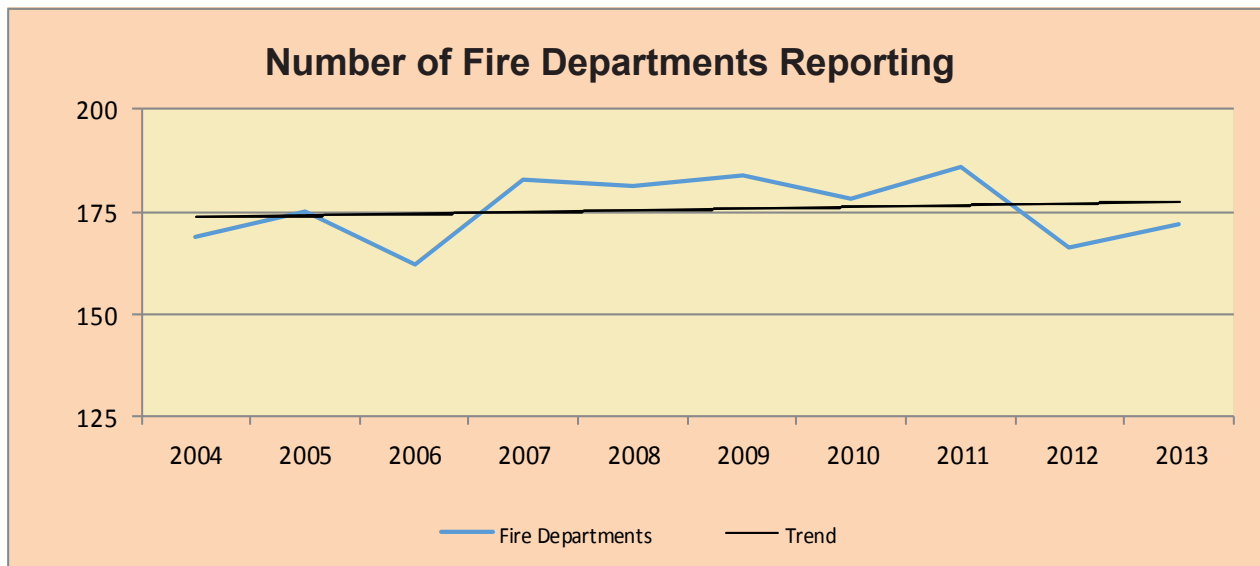
Warning Error – Data is either missing or incorrect in the report. A warning error will not prevent the report from being marked as complete or valid.

Response Time Warnings are generated for any incident report with a response time of over 20 minutes. The message will be “Response > 20 minutes exceeds NFPA standard. Please check times. If correct, no action is required.” If the dates and times are correct, do not change them.

Examples of quality issues that may not show up as errors on the system but need a recheck for correctness include:

- “Undetermined” or “Under investigation” reports should be revised if the cause is determined at a later date.
- Property and Content Losses are estimates and provide valuable information for determining the magnitude of the fire problem and possible financial support for fire protection. Insurance companies do not use reports estimates for replacement value of property or contents.

Reporting Trends



Fire Stations Across Idaho



St. Joe Valley Fire
District 4 - Marble Creek Substation



Sagle Fire District



Kooskia Fire Department



Horseshoe Bend Fire District



Ferdinand Rural City Fire Department



Albion Fire Protection District

Fire in Idaho 2013

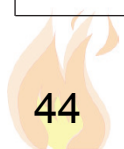
Departments NOT Reporting in 2013

These departments had not submitted incidents as of May 1, 2014. Their reports may have had an effect on the statistics.

Aberdeen/Springfield Fire Dist (Bingham Co)	Lapwai FD (Nez Perce Co)
Ace Fire Protection Assn Unit (Cassia Co)	Mackay FD (Custer Co)
Albion Fire Protection Dist (Cassia Co)	McCammon FD (Bannock Co)
Ammon FD (Bonneville Co)	Meadows Valley FPD (Adams Co)
Arimo FD (Bannock Co)	Nezperce FD (Lewis Co)
Atlanta Rural FD (Elmore Co)	North Fork FPD (Lemhi Co)
Atomic City FD (Bingham Co)	North Fremont Fire Dist, Inc (Fremont Co)
Bancroft FD (Caribou Co)	Nounan FD (Bear Lake Co)
Bear Fire Dist (Adams Co)	Ovid FD (Bear Lake Co)
Bennington FD (Bear Lake Co)	Pahsimeroi FPD (Lemhi Co)
Bovill FD (Latah Co)	Paris FD (Bear Lake Co)
Bruneau FPD (Owyhee Co)	Pegram FD (Bear Lake Co)
Cambridge FPD (Washington Co)	Pierce VFD (Clearwater Co)
Carrot Ridge Vol Fire Dist (Idaho Co)	Pocatello Valley FD (Bannock Co)
Castleford FD (Twin Falls Co)	Potlatch RFPD (Latah Co)
Clearwater Potlatch TPA (Clearwater Co)	Prairie QRU & Fire (Elmore Co)
Culdesac Vol FD (Nez Perce Co)	Richfield FPD (Lincoln Co)
Cuprum FD (Adams Co)	Ridge Runner FD (Idaho Co)
Dietrich Rural FD (Lincoln Co)	Riggins City FD (Idaho Co)
Dingle FD (Bear Lake Co)	Robie Creek VFD (Boise Co)
Downey Vol FD (Bannock Co)	Salmon River Rural FD (Idaho Co)
Dubois City FD (Clark Co)	Salmon Tract Rural FPD (Twin Falls Co)
Elk City VFD (Idaho Co)	Shoshone City/Rural Fire Dist (Lincoln Co)
Evergreen Rural Fire Dist (Clearwater Co)	Shoshone Co FPD #3 (Shoshone Co)
Ferdinand Rural/City FD (Idaho Co)	Smiley Creek FPD (Blaine Co)
Fish Haven FD (Bear Lake Co)	South Custer RFPD (Custer Co)
Genesee Fire Department (Latah Co)	South ID Timber Protective Assn (Valley Co)
Geneva FD (Bear Lake Co)	St Charles FD (Bear Lake Co)
Georgetown FD (Bear Lake Co)	St Joe Valley Fire Dist (Shoshone Co)
Grangemont Vol Fire Dist (Clearwater Co)	Stibnite FD (Valley Co)
Hall Mountain Vol Fire Assn, Inc (Boundary Co)	Stites FD (Idaho Co)
Hamer FPD (Jefferson Co)	Tensed Rural Fire Dist (Benewah Co)
High Valley Fire Protection Assn (Valley Co)	Ucon FD (Bonneville Co)
Hope/East Hope FD (Bonner Co)	Upper Fords Creek Rural FD (Clearwater Co)
Idaho Department of Correction FD (Ada Co)	West Jefferson Fire Control Dist (Jefferson Co)
INL FD (Butte Co)	Williams Lake VFD (Lemhi Co)
Island Park FPD (Fremont Co)	Yellowpine FD (Valley Co)
Kendrick Vol FD (Latah Co)	

Fire in Idaho 2013

FDID	DEPARTMENT NAME	POPULATION PROTECTED	FIRE	EXPLOSIONS	EMS	HAZARDOUS CONDITION	SERVICE CALL	ASSISTED	FALSE ALARM	NATURAL DISASTER	OTHER	TOTALS	PERCENT OF TOTAL	\$ LOSS	FIRE SVC FATALITY	FIRE SVC INJURY	FATALITY	CIVILIAN INJURY	CIVILIAN FATALITY
BINGHAM COUNTY																			
11303	ABERDEEN / SPRINGFIELD FIRE DIST	2,000											0	0%					
11360	ATOMIC CITY FD	28											0	0%					
11101	BLACKFOOT FD	35,000	102	2	10	51	20	54	85	1	1	326	0%	\$544,530					
11357	FIRTH FIRE DIST	5,000	42	0	29	7	7	9	4	0	0	98	0%	\$17,800					
11334	FORT HALL FIRE & EMS DIST	9,000	57	1	83	15	8	17	13	0	4	198	0%	\$133,900					1
11355	SHELLEY RPD	8,000	27	0	43	8	1	4	6	0	0	89	0%	\$27,950					
	TOTALS	59,028	228	3	165	81	36	84	108	1	5	711	1%	\$724,180	0	0	0	0	1
BLAINE COUNTY																			
13302	BELLEVUE FD	2,500	33	1	2	18	8	2	28	0	0	92	0%	\$40,000					
13354	CAREY RURAL FPD	1,475	14	0	48	10	10	23	3	0	0	108	0%	\$4,145					
13301	HAILEY FD	8,000	29	0	292	32	42	25	37	0	0	457	0%						
13203	KETCHUM FD	5,000	20	3	588	33	43	74	127	2	0	890	1%	\$3,097,105					
13308	SMILEY CREEK FPD	150										0	0%						
13306	SUN VALLEY FD	15,000	9	0	95	2	16	4	65	0	8	199	0%	\$5,535					
13334	WOOD RIVER FIRE & RESCUE	5,000	32	0	585	8	5	80	11	0	1	722	1%	\$213,960					
	TOTALS	37,125	137	4	1,610	103	124	208	271	2	9	2,468	2%	\$3,360,745	0	0	0	0	0
BOISE COUNTY																			
15309	CENTERVILLE VFD	500	5	0	0	0	0	1	0	0	0	6	0%						
15330	CLEAR CREEK VFD	500	3	0	14	1	2	0	0	0	0	20	0%						
15311	GARDEN VALLEY RURAL FD	3,800	19	0	143	6	2	32	1	1	1	205	0%	\$217,074					
15345	HORSESHOE BEND FIRE DIST	1,750	1	0	0	1	0	1	1	0	0	4	0%						
15324	IDAHO CITY FD	2,000	5	0	8	2	0	2	1	0	0	18	0%	\$1,000					
15342	LOWMAN VOL FIRE DIST, INC.	300	1	0	0	2	0	0	0	0	0	3	0%						
15301	PLACERVILLE FIRE DIST	200	0	0	0	0	1	0	0	0	0	1	0%						
15313	ROBIE CREEK VFD	450										0	0%						
15335	VALLEY OF THE PINES VFD	650	32	0	4	0	0	0	0	0	0	36	0%						
15340	WILDERNESS RANCH FPD	2,000	7	0	60	0	3	19	0	0	0	89	0%						
	TOTALS	12,150	73	0	229	12	8	55	3	1	1	382	0%	\$218,074	0	0	0	0	0
BONNER COUNTY																			
17314	CLARK FORK FIRE & RESCUE	2,600	14	0	52	10	0	17	5	2	2	102	0%					1	
17344	COOLIN-CAVANAUGH BAY FPD	400	2	0	3	3	3	2	3	2	0	18	0%						
17316	HOPE-EAST HOPE VOL FIRE DIST	700										0	0%						
17339	NORTH OF THE NARROWS FIRE DIST	500	1	0	2	0	0	2	0	0	0	5	0%						
17333	NORTHSIDE FIRE DIST	10,000	50	1	1	194	22	39	16	0	0	323	0%	\$39,650					
17341	SAGLE FIRE DIST	8,500	56	1	551	41	81	100	30	0	2	862	1%	\$188,110					1
17360	SAM OWEN FIRE DIST	500	0	0	2	5	0	1	0	0	0	8	0%						
17201	SANDPOINT FD	7,500	35	0	789	91	45	142	58	6	0	1,166	1%	\$36,929					
17349	SCHWEITZER FIRE DIST	1,000	3	0	89	9	2	5	2	0	0	110	0%						
17337	WEST PEND OREILLE FIRE DIST	5,000	37	0	186	88	101	91	19	0	0	522	1%	\$681,000					1
17319	WEST PRIEST LAKE FIRE DIST	700	4	0	14	5	0	5	0	0	1	29	0%	\$567,400					1
17335	WESTSIDE FPD	2,266	23	0	101	13	4	17	0	0	2	160	0%	\$4,550					
	TOTALS	39,666	225	2	1,790	459	258	421	133	12	5	3,305	3%	\$1,517,639	0	0	0	2	2

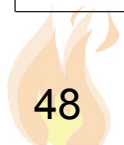


FDID	DEPARTMENT NAME	POPULATION PROTECTED	FIRE	EXPLOSIONS	EMS	HAZARDOUS CONDITION	SERVICE CALL	ASSISTED	FALSE ALARM	NATURAL DISASTER	OTHER	TOTALS	PERCENT OF TOTAL	\$ LOSS	FIRE SVC FATALITY	FIRE SVC INJURY	FATALITY	CIVILIAN INJURY	CIVILIAN FATALITY
BONNEVILLE COUNTY																			
19315	AMMON FD	15,000											0						
19340	GREATER SWAN VALLEY FPD #2	1,000	8	0	0	60	1	0	10	1	0	0	80	0%					
19101	IDAHO FALLS FD	80,000	269	10	2,369	168	64	375	392	392	1	5	3,653	4%	\$3,951,075		2	1	10
19317	UCON FD	1,200											0	0%					
	TOTALS	97,200	277	10	2,429	169	64	385	393	393	1	5	3,733	4%	\$3,951,075	0	2	1	10
BOUNDARY COUNTY																			
21301	BONNERS FERRY FD	3,000	17	0	17	15	4	14	16	16	0	0	83	0%	\$137,000		2		
21333	CURLEY CREEK VFD	300	5	0	0	0	3	18	0	0	0	0	26	0%	\$26,500				
21344	HALL MOUNTAIN VOL FIRE ASSN, INC	1,500											0	0%					
21315	MOYIE SPRINGS FD	668	2	0	0	1	2	11	0	0	0	0	16	0%					
21341	NORTH BENCH FD	2,000	10	0	48	6	1	10	2	0	0	0	77	0%	\$431,100		1		
21348	PARADISE VALLEY FIRE DIST	2,600	0	0	3	0	0	0	0	0	0	0	3	0%					
21346	SOUTH BOUNDARY FPD	2,700	16	0	38	20	3	9	1	0	0	0	87	0%	\$90,000				
	TOTALS	12,768	50	0	106	42	13	62	19	0	0	0	292	0%	\$684,600	0	3	0	0
BUTTE COUNTY																			
23316	JARCO FD	1,100	8	0	6	1	0	3	0	0	0	0	18	0%	\$278,000		2		
23320	INL FD												0	0%					
23341	LOST RIVER FPD	16	16	0	1	0	5	0	0	0	0	0	22	0%	\$21,520				
	TOTALS	1,116	24	0	7	1	5	3	0	0	0	0	40	0%	\$299,520	0	2	0	0
CAMAS COUNTY																			
25301	CITY OF FAIRFIELD FD	1,013	7	0	1	0	0	0	0	2	0	0	10	0%					
25340	WEST MAGIC FIRE DIST	200	1	0	0	0	0	0	0	0	0	0	1	0%					
	TOTALS	1,213	8	0	1	0	0	0	2	0	0	0	11	0%	\$0	0	0	0	0
CANYON COUNTY																			
27211	CALDWELL CITY FPD	49,900	284	5	2,985	76	369	663	214	0	15	0	4,611	5%	\$1,285,485		27		6
27344	MELBA RURAL FPD	4,000	44	0	87	1	20	15	2	1	0	0	170	0%	\$88,150				
27336	MIDDLETON RURAL FPD	20,100	159	0	618	12	123	166	33	2	5	0	1,118	1%	\$574,817		1		2
27101	NAMPA FD	102,583	259	10	5,096	145	1,232	779	502	1	7	0	8,031	8%	\$1,018,836		13		
27338	PARMA FD	10,000	7	0	87	0	2	1	1	0	0	0	98	0%	\$35,000				
27109	SOUTHWEST HAZ MAT REGIONAL TEAM	7,600		0	0	4	1	0	0	0	0	0	5	0%					
27339	UPPER DEER FLAT FD	30	30	0	0	1	3	4	10	0	0	0	48	0%	\$521,500		1		
27307	WILDER RURAL FPD	4,100	63	1	177	1	14	27	5	1	0	0	289	0%	\$9,000				
	TOTALS	198,283	846	16	9,050	240	1,764	1,655	767	5	27	0	14,370	14%	\$3,532,788	0	41	1	8
CARIBOU COUNTY																			
29306	BANCROFT FD	500											0	0%					
29305	CARIBOU COUNTY FD	4,800	12	0	5	0	0	2	0	0	1	0	20	0%	\$660,000				
29309	GRACE FD	960	8	0	0	1	0	0	0	0	0	0	9	0%					
29301	SODA SPRINGS FD	3,200	9	0	1	2	2	0	1	0	0	0	15	0%	\$37,050		0	0	1
	TOTALS	9,460	29	0	6	3	2	2	1	1	0	0	44	0%	\$697,050	0	0	0	1

FDID	DEPARTMENT NAME	POPULATION PROTECTED	FIRE	EXPLOSIONS	EMS	HAZARDOUS CONDITION	SERVICE CALL	ASSISTED	FALSE ALARM	NATURAL DISASTER	OTHER	TOTALS	PERCENT OF TOTAL	\$ LOSS	FIRE SVC FATALITY	INJURY	FIRE SVC INJURY	FATALITY	CIVILIAN INJURY	CIVILIAN FATALITY
CASSIA COUNTY																				
31343	ACE FIRE PROTECTION ASSN UNIT	500											0	0%						
31342	ALBION FPD	305											0	0%						
31201	BURLEY FD	19,000	58	2	493	11	7	66	73	0	1	711	1%	\$110,500						
31334	DECLO FD	338	1	0	2	1	0	2	0	0	0	6	0%	\$24,200						
31340	OAKLEY FPD	1,400	10	0	4	1	1	2	3	0	0	21	0%	\$56,600						
31338	RAFT RIVER FPD	1,148	12	0	0	0	0	1	0	0	0	13	0%	\$60,000						
	TOTALS	22,691	81	2	499	13	8	71	76	0	1	761	1%	\$251,300	0	0	0	0	0	0
CLARK COUNTY																				
33329	DUBOIS CITY FD	1,000											0	0%	\$0					
	TOTALS	1,000	0	0	0	0	0	0	0	0	0	0	0	0%	\$0	0	0	0	0	0
CLEARWATER COUNTY																				
88172	CLEARWATER POTLATCH TPA	10,000											0	0%						
35301	ELK RIVER FD	125	1	0	0	0	0	1	0	0	0	2	0%							
35341	EVERGREEN RURAL FIRE DIST											0	0%							
35330	GRANGEMONT VOL FIRE DIST	180										0	0%							
35303	OROFINO FD	3,247	16	0	37	4	3	20	9	0	0	89	0%	\$87,025			1	5		
35309	PIERCE VFD	700										0	0%							
35338	SUNNYSIDE RURAL FIRE DIST	400	6	0	0	0	1	0	0	0	0	7	0%							
35305	TWIN RIDGE RURAL FD	500	6	0	0	0	1	0	1	0	0	8	0%	\$15,000						
35344	UPPER FORDS CREEK RURAL FD	200										0	0%							
35312	WEIPPE FD	600	14	0	15	0	1	3	2	0	0	36	0%							
	TOTALS	15,952	43	0	52	4	6	24	12	0	0	141	0%	\$102,025	0	1	5	0	0	0
CUSTER COUNTY																				
37302	CHALLIS VFD		2	0	0	0	0	0	0	0	0	2	0%							
37305	MACKAY FD	566										0	0%							
37334	NORTH CUSTER FD	2,000	12	0	16	0	0	4	0	0	0	32	0%	\$68,000						
37301	SAWTOOTH VALLEY RURAL FD	400	6	0	6	0	0	8	0	0	0	20	0%							
37354	SOUTH CUSTER RURAL FPD	1,400										0	0%							
	TOTALS	4,366	18	0	22	0	0	12	0	0	0	54	0%	\$68,000	0	0	0	0	0	0
ELMORE COUNTY																				
39338	ATLANTA RURAL FD	150										0	0%							
39303	GLENNS FERRY FD	1,300	3	0	4	1	0	2	3	0	0	13	0%	\$225,000						
39336	KING HILL FPD	1,000	26	0	6	1	0	16	2	1	0	52	0%	\$201,000						
39334	MOUNTAIN HOME RURAL FPD	4,000	44	0	0	1	1	5	4	0	0	55	0%	\$250,300						
39301	MOUNTAIN HOME VFD	14,000	31	2	1	5	8	9	50	0	0	106	0%	\$312,100						
39309	OASIS VFD	175	11	1	0	0	0	2	0	0	0	14	0%							
39305	PRAIRIE QRU & FIRE											0	0%							
	TOTALS	20,625	115	3	11	8	9	34	59	1	0	240	0%	\$988,400	0	0	0	0	0	0
FRANKLIN COUNTY																				
41301	FRANKLIN COUNTY FIRE DIST	13,000	40	0	9	46	13	20	14	0	0	142	0%	\$418,300						
	TOTALS	13,000	40	0	9	46	13	20	14	0	0	142	0%	\$418,300	0	0	0	0	0	0

FDID	DEPARTMENT NAME	POPULATION PROTECTED	FIRE	EXPLOSIONS	EMS	HAZARDOUS CONDITION	SERVICE CALL	ASSISTED	FALSE ALARM	NATURAL DISASTER	OTHER	TOTALS	PERCENT OF TOTAL	\$ LOSS	FIRE SVC FATALITY	FIRE SVC INJURY	FATALITY	CIVILIAN INJURY	CIVILIAN FATALITY
FREMONT COUNTY																			
43334	ISLAND PARK FPD	10,000											0	0%					
43336	NORTH FREMONT FIRE DIST, INC	3,000											0	0%					
43338	SOUTH FREMONT FD	7,500	43	3	4	7	0	12	5	0	1	75	0%	\$701,890					
	TOTALS	20,500	43	3	4	7	0	12	5	0	1	75	0%	\$701,890	0	0	0	0	3
GEM COUNTY																			
45301	EMMETT FD	7,000	22	1	8	24	14	15	20	1	1	106	0%	\$538,200					
45334	GEM COUNTY FPD #1	10,000	101	0	30	17	14	25	7	0	1	195	0%	\$975,350					
45339	GEM COUNTY FPD #2	1,300	22	0	4	0	1	8	2	0	1	38	0%						
	TOTALS	18,300	145	1	42	41	29	48	29	1	3	339	0%	\$1,513,550	0	0	0	0	0
GOODING COUNTY																			
47341	BLISS FIRE DIST	750	24	0	15	5	8	26	1	1	1	81	0%				1		
47301	GOODING FD	7,000	69	0	69	19	26	33	18	0	1	235	0%	\$452,900					
47323	HAGERMAN FPD	2,500	33	1	185	6	3	15	1	2	1	247	0%	\$199,600					
47335	WENDELL CITY FD	3,500	57	0	56	25	4	17	1	0	0	160	0%	\$1,656,000			1		
47303	WENDELL RURAL FIRE DIST	3,500	17	0	23	6	4	4	21	0	1	76	0%	\$39,600					
	TOTALS	17,250	200	1	348	61	45	95	42	3	4	799	1%	\$2,348,100	0	1	1	1	0
IDAHO COUNTY																			
49352	BPC VOL RURAL FD, INC.	600	4	0	0	0	0	2	0	0	0	6	0%						2
49340	CARROT RIDGE VOL FIRE DIST	200										0	0%						
49310	COTTONWOOD VFD	1,000	1	0	2	1	0	2	0	0	0	6	0%						
49335	COTTONWOOD RURAL FD	600	9	0	3	0	0	2	1	0	0	15	0%						
49316	ELK CITY VFD	400										0	0%						
49327	FERDINAND RURAL/CITY FD	150										0	0%						
49375	GLENWOOD/CARIBEL VOL FIRE DIST	500	2	0	0	0	0	0	0	0	0	2	0%	\$155,000			2		
49308	GRANGEVILLE CITY FD	3,500	13	0	0	3	0	1	6	0	0	23	0%	\$145,000					3
49334	GRANGEVILLE RURAL FD	16	0	1	2	0	1	2	0	0	0	22	0%	\$518,000					
49362	HARPSTER FPD	300	5	0	0	0	1	1	1	0	0	8	0%						
49330	KOOSKIA FD	215	13	0	4	0	1	2	0	0	0	20	0%	\$206,550					
49336	RIDGE RUNNER FD	800										0	0%						
49350	RIGGINS CITY FD	852										0	0%						
49338	SALMON RIVER RURAL FD	1,057										0	0%						
49370	SESECH MEADOWS RURAL FIRE DIST	200	1	0	0	0	0	0	0	0	0	1	0%						
49329	STITES FD											0	0%						
49311	WHITE BIRD FD	500	8	1	0	0	3	1	0	0	0	13	0%	\$383,464					
	TOTALS	10,874	72	1	10	6	5	12	10	0	0	116	0%	\$1,408,014	0	2	3	2	2
JEFFERSON COUNTY																			
51334	CENTRAL FIRE DIST	20,000	82	0	2	16	38	17	21	0	0	176	0%	\$515,350					1
51337	HAMER FPD	86										0	0%						
51314	ROBERTS FIRE DIST	647	2	0	0	0	1	2	0	0	0	5	0%						
51340	WEST JEFFERSON FIRE CONTROL DIST	1,200										0	0%						
	TOTALS	21,933	84	0	2	16	39	19	21	0	0	181	0%	\$515,350	0	0	0	0	1

FDID	DEPARTMENT NAME	POPULATION PROTECTED	FIRE	EXPLOSIONS	EMS	HAZARDOUS CONDITION	SERVICE CALL	ASSISTED	FALSE ALARM	NATURAL DISASTER	OTHER	TOTALS	PERCENT OF TOTAL	\$ LOSS	FIRE SVC FATALITY	FIRE SVC INJURY	FATALITY	CIVILIAN INJURY	CIVILIAN FATALITY
JEROME COUNTY																			
53353	FIRST SEGREGATION FIRE DIST	2,500	27	0	27	0	25	6	21	1	0	0	107	0%	\$244,250				
53201	JEROME CITY FD	11,000	50	1	765	32	8	38	49	0	0	3	946	1%	\$1,268,120			2	
53333	JEROME RURAL FIRE DIST #1	10,000	93	2	10	86	10	43	8	0	0	1	253	0%	\$276,800				
	TOTALS	23,500	170	3	802	143	24	102	58	0	0	4	1,306	1%	\$1,789,170	0	0	2	0
KOOTENAI COUNTY																			
55201	COEUR D'ALENE FD	50,000	130	9	5,519	77	614	559	271	0	0	2	7,181	7%	\$1,478,125		1		
55360	EAST SIDE FPD	1,800	8	0	50	2	9	15	12	0	0	0	96	0%	\$5,000				
55346	HAUSER LAKE FPD	2,200	12	0	104	5	7	22	3	0	0	0	153	0%	\$17,300				
55234	KOOTENAI CO FIRE & RESCUE	45,000	133	2	3,495	65	340	644	174	3	4	4	4,860	5%	\$12,500		14		
55209	KOOTENAI CO REGION 1 HAZMAT TEAM	141,132	0	0	0	2	5	0	0	0	0	0	7	0%					
55354	MICA-KIDD ISLAND FPD	2,100	16	0	45	2	7	19	5	0	0	0	94	0%					
55342	NORTHERN LAKES FPD	38,000	107	1	2,454	53	197	650	92	3	1	1	3,558	3%	\$562,011		19		
55338	SPIRIT LAKE FPD	8,250	9	0	51	2	3	14	2	0	0	0	81	0%	\$473,500				
55352	TIMBERLAKE FPD	8,000	41	0	414	17	25	72	22	0	3	3	594	1%	\$58,700				
55336	WORLEY FPD	2,500	31	1	147	4	9	58	7	0	0	0	257	0%					
	TOTALS	298,982	487	13	12,279	229	1,216	2,053	588	6	10	16,881	17%	\$2,607,136	0	34	0	0	0
LATAH COUNTY																			
57309	BOVILL FD	380											0	0%					
57342	DEARY RURAL FIRE DIST	2,000	14	0	4	2	0	0	0	0	0	0	20	0%					
57338	GENESEE FD	2,100											0	0%					
57307	JULIAETTA VFD	625	0	0	1	0	0	0	0	0	0	0	1	0%					
57306	KENDRICK VFD	400											0	0%					
57301	MOSCOW CITY FD	25,000	87	0	383	71	25	57	135	1	0	0	759	1%	\$384,910				
57334	MOSCOW RURAL DISTRICT	10,000	26	0	84	7	8	25	1	0	0	0	151	0%	\$43,000				1
57336	POTLATCH RURAL FPD	791											0	0%					
57340	TROY RURAL FD	2,500	14	0	14	2	2	3	0	2	0	0	37	0%					
57304	TROY VFD		1	0	4	1	1	2	0	0	0	0	9	0%					
	TOTALS	43,796	142	0	490	83	36	87	136	3	0	0	977	1%	\$427,910	0	0	0	1
LEMHI COUNTY																			
59310	ELK BEND FPD	300	2	0	7	0	0	0	18	0	0	0	27	0%					
59315	LEADORE COMMUNITY VFD	1,350	5	0	3	4	2	2	0	0	0	0	16	0%					
59330	LEMHI COUNTY FPD #1	4,000	6	0	0	0	1	2	0	0	0	0	9	0%					
59333	NORTH FORK FPD	600											0	0%					
59344	PAHSIMEROI VFD	50											0	0%					
59351	WILLIAMS LAKE VFD	150											0	0%					
	TOTALS	6,450	13	0	10	4	3	22	0	0	0	0	52	0%	\$0	0	0	0	0
LEWIS COUNTY																			
61304	CRAIGMONT FD	500	1	0	0	0	1	0	0	0	0	0	2	0%					
61335	KAMIAH FD	5,000	1	0	0	3	2	0	0	0	0	0	6	0%					
61334	KAMIAH RFPD		35	1	10	17	2	5	0	0	0	1	71	0%	\$155,300				
61310	NEZPERCE FD	1,500											0	0%					
61308	WINCHESTER VFD	600	7	0	1	0	0	0	1	0	0	0	9	0%					
61312	WINCHESTER RFD		4	0	0	1	0	2	0	0	0	0	7	0%					
	TOTALS	7,600	44	1	11	21	4	6	0	0	0	1	88	0%	\$155,300	0	0	0	0



FDID	DEPARTMENT NAME	POPULATION PROTECTED	FIRE	EXPLOSIONS	EMS	HAZARDOUS CONDITION	SERVICE CALL	ASSISTED	FALSE ALARM	NATURAL DISASTER	OTHER	TOTALS	PERCENT OF TOTAL	\$ LOSS	FIRE SVC FATALITY	INJURY	FIRE SVC	FATALITY	CIVILIAN INJURY	CIVILIAN FATALITY
LINCOLN COUNTY																				
63306	DIETRICH RURAL FD	500											0	0%						
63308	RICHFIELD FPD	700											0	0%						
63301	SHOSHONE CITY/RURAL FIRE DIST	600											0	0%						
	TOTALS	1,800	0	0	0	0	0	0	0	0	0	0	0	0%	\$0	0	0	0	0	0
MADISON COUNTY																				
65234	MADISON FD	38,440	102	0	45	88	15	160	131	2	1	544	1%	\$413,335				4		
	TOTALS	38,440	102	0	45	88	15	160	131	2	1	544	1%	\$413,335	0	4	0	0	0	0
MINIDOKA COUNTY																				
67336	MINIDOKA COUNTY FPD	10,000	84	2	254	10	7	33	17	0	1	408	0%	\$1,398,100						
67301	RUPERT CITY FIRE & RESCUE	5,600	21	1	252	15	0	5	11	5	1	311	0%	\$150,000						
67334	WEST END FPD	8,800	1	0	1	3	0	0	0	0	0	5	0%	\$3,750						
	TOTALS	24,400	106	3	507	28	7	38	28	5	2	724	1%	\$1,551,850	0	0	0	0	0	0
NEZ PERCE COUNTY																				
69333	BIG CANYON FIRE DIST	500	1	0	0	0	0	0	0	0	3	4	0%							
69311	CULDESAC VFD	350										0	0%							
69306	LAPWAI FD	1,200										0	0%							
69201	LEWISTON FD	32,000	127	2	5,032	72	1,061	1,022	152	0	0	7,468	7%	\$1,480,329			1			2
69209	LEWISTON HAZ MAT TEAM											NO ACTIVITY								
69344	NEZPERCE CO FD	6,000	50	0	0	2	6	36	1	0	0	95	0%	\$243,100						
69345	WHEATLAND FPD	350	5	0	0	0	0	0	1	0	0	6	0%							
	TOTALS	40,400	183	2	5,032	74	1,067	1,058	154	0	3	7,573	7%	\$1,723,429	0	1	0	0	0	2
ONEIDA COUNTY																				
71301	ONEIDA COUNTY VFD/MALAD FD	6,000	2	0	0	0	0	0	0	0	0	2	0%							
	TOTALS	6,000	2	0	0	0	0	0	0	0	0	2	0%	\$0	0	0	0	0	0	0
OWYHEE COUNTY																				
73340	BRUNEAU FPD	200										0	0%							
73338	GRAND VIEW FPD	3,000	2	0	0	0	0	0	0	0	0	2	0%							
73334	HOMEDALE RFPD	8,500	42	0	4	9	0	10	7	0	0	72	0%	\$267,000						
73336	MARSING CITY/RURAL FPD	20,000	40	0	21	4	5	16	1	2	0	89	0%	\$20,400						
73342	MURPHY-REYNOLDS-WILSON FPD	1,200	16	0	3	0	2	2	0	1	0	24	0%	\$25,000						
73320	SILVER CITY FIRE & RESCUE, INC.	30	2	0	0	0	3	0	0	0	0	5	0%							
	TOTALS	32,930	102	0	28	13	10	28	8	3	0	192	0%	\$312,400	0	0	0	0	0	0
PAYETTE COUNTY																				
75302	FRUITLAND FD	4,683	30	0	5	8	8	4	3	0	0	58	0%	\$103,510				1		
75336	NEW PLYMOUTH RURAL FIRE DIST	2,500	57	0	18	5	8	5	3	0	2	98	0%	\$414,200						
75301	PAYETTE CITY FD	8,200	33	0	297	11	145	12	34	0	1	533	1%	\$264,450						1
75334	PAYETTE RURAL FD	8,000	49	0	26	5	13	16	3	0	0	112	0%	\$180,780						
	TOTALS	23,383	169	0	346	29	174	37	43	0	3	801	1%	\$962,940	0	1	0	0	0	1

FDID	DEPARTMENT NAME	POPULATION PROTECTED	FIRE	EXPLOSIONS	EMS	HAZARDOUS CONDITION	SERVICE CALL	ASSISTED	FALSE ALARM	NATURAL DISASTER	OTHER	TOTALS	PERCENT OF TOTAL	\$ LOSS	FIRE SVC FATALITY	FIRE SVC INJURY	FATALITY	CIVILIAN INJURY	CIVILIAN FATALITY
POWER COUNTY																			
77302	AMERICAN FALLS FD	5,000	8	2	4	2	3	4	1	0	0	0	24	0%	\$50,400				
77330	AMERICAN FALLS RFPD	1,000	3	0	0	0	0	0	0	0	0	0	41	0%	\$362,300			1	
77306	ROCKLAND RURAL FIRE DIST	6,000	30	2	13	4	5	12	2	0	0	0	68	0%	\$419,700	0	0	1	0
	TOTALS																		
SHOSHONE COUNTY																			
79304	MULLAN VOL FD	900	3	0	0	0	0	0	0	0	0	0	3	0%					
79305	PRICHARD/MURRAY VOL FD	400	2	0	1	1	0	0	0	0	0	0	4	1%	\$111,000				
79236	SHOSHONE CO FPD #1	4,500	21	3	494	9	5	43	10	2	1	588	1%	\$162,000					
79234	SHOSHONE CO FPD #2	8,000	59	2	604	16	64	80	34	0	9	868	1%	\$92,000	1	2			
79316	SHOSHONE CO FPD #3	100										0	0%						
79310	ST. JOE VALLEY FIRE DIST	250										0	0%						
	TOTALS	13,250	82	5	1,099	26	69	123	44	2	10	1,456	1%	\$365,000	0	1	2	0	0
TETON COUNTY																			
81334	TETON COUNTY FPD	11,500	50	0	221	17	36	38	47	0	3	412	0%	\$34,000					
	TOTALS	11,500	50	0	221	17	36	38	47	0	3	412	0%	\$34,000	0	0	0	0	0
TWIN FALLS COUNTY																			
83207	BUHL FD	9,000	55	1	32	26	15	30	29	1	0	189	0%	\$262,350					
83340	CASTLEFORD FD	277										0	0%						
83338	FLIER FD	8,000	44	0	2	34	10	39	19	0	1	149	0%						
83334	ROCK CREEK RURAL FPD	14,000	50	0	485	24	9	95	25	0	0	688	1%	\$537,100				1	
83349	SALMON TRACT RURAL FPD	750										0	0%						
83101	TWIN FALLS FD	51,123	146	2	447	2,020	154	237	332	1	79	3,418	3%	\$1,327,375	2	2	2	1	
	TOTALS	83,150	295	3	966	2,104	188	401	405	2	80	4,444	4%	\$2,126,825	0	2	2	2	2
VALLEY COUNTY																			
85334	CASCADE RURAL FPD	2,500	16	1	199	4	36	42	2	0	1	301	0%	\$14,000					
85304	DONNELLY RURAL FPD	6,000	26	1	160	4	62	29	13	0	2	297	0%	\$659,233					
85340	HIGH VALLEY FIRE PROTECTION ASSN	200										0	0%						
85339	MCCALL FPD	6,000	39	0	691	24	47	87	69	2	4	963	1%	\$365,500					
85307	SO IDAHO TIMBER PROTECTIVE ASSN											0	0%						
85359	STIBNITE FD	35										0	0%						
	TOTALS	14,735	81	2	1,050	32	145	158	84	2	7	1,561	2%	\$1,038,733	0	0	0	0	0
WASHINGTON COUNTY																			
87330	CAMBRIDGE FPD	900										0	0%						
87336	MIDVALE FPD	750	9	0	8	0	0	1	0	0	0	18	0%	\$16,500					
87334	WEISER AREA RURAL FPD	4,500	34	1	3	24	0	9	3	3	0	77	0%	\$1,018,000					
87301	WEISER CITY FIRE & RESCUE	5,000	33	0	2	20	9	5	14	1	2	86	0%	\$95,225					
	TOTALS	11,150	76	1	13	44	9	15	17	4	2	181	0%	\$1,129,725	0	0	0	0	0
STATE OF IDAHO TOTALS																			
			6,204	140	62,937	4,997	8,818	12,181	6,169	129	227	101,809	100%	45,921,420	0	100	20	51	

Glossary of Terms and Abbreviations

\$ Loss - Combined estimated property and content dollar loss as reported by reporting agencies.

Alarm - Any notification made to the fire department that a situation exists or may exist requiring a response.

Arson - The crime of maliciously and intentionally or recklessly starting a fire or causing an explosion.

Automatic Extinguishing System (AES) - A device or system providing an emergency fire extinguishing function without the necessity of human intervention, typically a water spray.

Casualty - A person who is injured or killed at the scene of a fire or other reported incident.

Cause - The circumstances or conditions that brought about or resulted in a fire or explosion incident, damage to property resulting from the fire or explosion incident, or bodily injury or loss of life resulting from the fire or explosion incident.

Civilian Fire Casualty - Any non-fire service person injured or killed as a direct result of a fire-related incident.

Confined Fire - Fire where the flame does not extend beyond a combustible container such as a cooking vessel, chimney or flue, trash container, etc.

Contained Fire - Fire spread that is reasonably expected to remain in check under prevailing conditions.

Crop - Cultivated vegetation such as grains, trees, orchard, nursery stock, etc.

EMS - Emergency Medical Service.

Fatality - An injury that is fatal or becomes fatal within one year of the incident.

Fire - Any instance of destructive and uncontrolled burning, including explosion, of combustible solids, liquids or gases.

Hazardous Materials - Any material that is air-reactive, corrosive, explosive, flammable gas, organic peroxide, oxidizing material, radioactive, toxic, unstable, water-reactive, or a flammable or combustible liquid; and any substance or mixture of substances that is an irritant or a strong sensitizer or generates pressure through exposure to heat, decomposition, or other means.

Incident - An event to which the reporting agency responds or should have responded. An incident may have more than one response.

Incident Record - The official file on an incident.

Incident Report - A document prepared by fire department personnel about a particular incident.

Mobile Property - Property designed to be movable whether or not it still is, such as vehicles, ships and airplanes.

Mutual Aid - Assistance given to or received by a fire department, whether fire or non-fire aid, by another fire department outside its normal jurisdiction.



NFIRS - National Fire Incident Reporting System.

Non-Fire Service Personnel - All persons involved with an incident who are not fire service personnel, such as police, utility company employees, non-fire service medical personnel or civilians.

Origin - The physical location where a heat source and fuel came in contact with each other.

Overpressure - A transient air pressure, such as the shock wave from an explosion, that is greater than the surrounding atmospheric pressure.

Prescribed Fire - Any fire ignited by management actions to meet specific objectives. A written, approved prescribed fire plan must exist prior to ignition. The controlled application of fire to wildland fuels in either their natural or modified state under specified environmental conditions allowing the fire to be confined to a predetermined area and, at the same time, to produce the intensity of heat and rate of spread required to attain planned resource management objectives.

Property Use - The actual use of the property where the incident occurred. A building, for example, could serve as a garage, a hospital or a department store. The use of property does not define any of the other important fire-related details of a property such as access, ownership, size, internal weaknesses in fire defense or construction.

Response Time - The length of time between notification of and arrival at an incident scene as reported by the responding agency.

Structure - An assembly of materials forming a construction for occupancy or use to serve a specific purpose. This includes, but is not limited to, buildings, open platforms, bridges, roof assemblies over open storage or process areas, tents, air-supported structures, and grandstands.

Structure Fire - Any fire inside, on, under or touching a structure.

Wildland Urban Interface Area - The geographical area where structures and other human development meet or intermingle with wildland or vegetative fuels.

Wildland - Land in its uncultivated, more or less natural state and covered by timber, woodland, brush or grass. An area in which development is essentially nonexistent except for roads, railroads, power lines and similar facilities.

Wildland Fire - Any involved vegetative fuel, other than prescribed fire, that occurs in wildland. A wildland fire may expose or possibly consume structures.



Fire Department Information by County
Personnel, Funding and Number of Stations*

FIRE DEPARTMENT	COUNTY	CAREER FIREFIGHTERS	VOLUNTEERS: PAID-PER-CALL	VOLUNTEERS: NO-PAY-PER-CALL	TOTAL FIREFIGHTERS	FUNDING	NUMBER OF STATIONS IN JURISDICTION
Boise FD	Ada	289	0	0	289	Tax Base	19
Eagle FPD	Ada	37	0	47	84	Tax Base	3
Kuna Rural Fire Dist	Ada	11	30	0	41	Tax Base	2
Meridian FD	Ada	57	16	0	73	Tax Base	5
North Ada County Fire & Rescue Dist	Ada	21	0	0	21	Tax Base	3
Star Joint FPD	Ada	9	20	0	29	Tax Base	2
Whitney Fire Dist	Ada	1	0	0	1	Tax Base	2
County Totals		425	46	67	538		36
Bear Fire Dist	Adams	0	0	12	12	Grants	0
Council Volunteer Fire Dist	Adams	0	0	15	15	Tax Base	1
Cuprum VFD	Adams	0	4	0	4	Subscription Dues	1
Indian Valley Rural FD	Adams	0	0	21	21	Tax Base	3
Meadows Valley FPD	Adams	0	12	0	12	Tax Base	1
County Totals		0	0	64	64		6
Armo FD	Bannock	0	0	8	8	Tax Base	1
Chubbuck FD	Bannock	7	37	0	44	Tax Base	1
Downey Volunteer Fire Dist	Bannock	0	0	0	0	Tax Base	1
Inkom FD	Bannock	0	0	0	0	Tax Base	1
Lava Hot Springs VFD	Bannock	0	0	18	18	Tax Base	1
McCammon VFD	Bannock	0	0	11	11	Tax Base	1
Pocatello FD	Bannock	72	0	0	72	Tax Base	5
Pocatello Valley FD	Bannock	0	0	0	0	Private	1
County Totals		79	37	37	153		12
Bear Lake Volunteer FPD	Bear Lake	0	0	0	0	Tax Base	9
Montpelier FD	Bear Lake	0	18	0	18	Tax Base	1
County Totals		0	18	0	18		10
Emida Fire Dist	Benewah	0	0	0	0	Tax Base	1
Fernwood Rural FPD	Benewah	0	0	13	13	Tax Base	1
Gateway FPD	Benewah	1	14	0	15	Tax Base	1
St. Maries FPD	Benewah	1	0	40	41	Tax Base	3
Tensed Rural Fire Dist	Benewah	0	0	0	0	Tax Base	1
County Totals		2	14	53	69		7
Aberdeen/Springfield Fire Dist	Bingham	0	25	0	25	Tax Base	2
Atomic City FD	Bingham	0	0	11	11	Grants	1
Blackfoot FD	Bingham	24	30	0	54	Tax Base	2
Firth Fire Dist	Bingham	0	20	0	20	Tax Base	2
Fort Hall Fire & EMS Dist	Bingham	20	4	0	24	Tribal Funds	2
Shelley-Firth Rural Fire Dist	Bingham	0	24	0	24	Tax Base	1
County Totals		44	103	11	158		10
Bellevue FD	Blaine	0	18	0	18	Tax Base	1
Carey Rural FPD	Blaine	0	26	0	26	Tax Base	3
Hailey FD	Blaine	4	18	0	22	Tax Base	1
Ketchum FD	Blaine	11	37	0	48	Tax Base	3
Smiley Creek Fire Dist	Blaine	0	12	0	12	Tax Base	1
Sun Valley FD	Blaine	3	24	0	27	Tax Base	2
Wood River Fire & Rescue	Blaine	11	42	0	53	Tax Base	3
County Totals		29	177	0	206		14

Fire Department Information by County
Personnel, Funding and Number of Stations*

FIRE DEPARTMENT	COUNTY	CAREER FIREFIGHTERS	VOLUNTEERS: PAID-PER-CALL	VOLUNTEERS: NO-PAY-PER-CALL	TOTAL FIREFIGHTERS	FUNDING	NUMBER OF STATIONS IN JURISDICTION
Centerville VFD	Boise	0	0	9	9	Subscription Dues	1
Clear Creek VFD	Boise	0	0	15	15	Donations	2
Garden Valley FPD	Boise	1	0	21	22	Tax Base	2
Horseshoe Bend Fire Dist	Boise	0	0	18	18	Tax Base	1
Idaho City VFD	Boise	0	0	20	20	Tax Base	1
Lowman Volunteer Fire Dist, Inc.	Boise	0	0	12	12	Subscription Dues	3
Placerville FPD	Boise	0	0	0	0	Tax Base	1
Robie Creek VFD	Boise	0	0	0	0	Subscription Dues	2
Valley of the Pines Thorn Creek VFD	Boise	0	0	15	15	Subscription Dues	1
Wilderness Ranch FPD	Boise	1	0	42	43	Tax Base	1
County Totals		2	0	152	154		15
Clark Fork Fire & Rescue	Bonner	0	11	0	11	Tax Base	1
Coolin-Cavanaugh Bay FPD	Bonner	0	0	34	34	Tax Base	1
Hope-East Hope VFD	Bonner	0	14	0	14	Tax Base	1
North of the Narrows Fire Dist	Bonner	0	0	17	17	Tax Base	1
Northside Fire Dist	Bonner	2	0	24	26	Tax Base	4
Sagle Fire Dist	Bonner	9	33	0	42	Tax Base	5
Sam Owen Fire Dist	Bonner	0	0	18	18	Tax Base	2
Sandpoint FD	Bonner	10	24	0	34	Tax Base	1
Schweitzer Fire Dist	Bonner	2	4	6	12	Tax Base	1
Upper Pack River Vol Fire Dist	Bonner	0	1	49	50	Tax Base	2
West Pend Oreille Fire Dist	Bonner	0	0	25	25	Tax Base	2
West Priest Lake Fire Dist	Bonner	0	0	0	0	Tax Base	3
Westside FPD	Bonner	2	9	0	11	Tax Base	3
County Totals		25	96	173	294		24
Ammon FD	Bonneville	3	37	0	40	Tax Base	1
Greater Swan Valley FPD #2	Bonneville	1	29	0	30	Tax Base	2
Idaho Falls FD	Bonneville	99	0	0	99	Tax Base	5
INL FD	Bonneville	0	0	0	93	Federal	3
Ucon FD	Bonneville	0	0	0	0	Tax Base	1
County Totals		196	66	0	262		12
Bonniers Ferry FD	Boundary	1	20	0	21	Tax Base	2
Curley Creek VFD	Boundary	0	12	0	12	Subscription Dues	2
Hall Mountain Volunteer Fire Assn, Inc.	Boundary	0	0	27	27	Subscription Dues	4
Moyie Springs FD	Boundary	0	10	0	10	Tax Base	1
North Bench FD	Boundary	0	0	16	16	Subscription Dues	3
Paradise Valley Fire Dist	Boundary	1	16	0	17	Tax Base	2
South Boundary FPD	Boundary	1	0	22	23	Tax Base	3
County Totals		3	58	65	126		17
Arco FD	Butte	0	0	15	15	Tax Base	1
Lost River FPD	Butte	0	0	0	0	Tax Base	1
County Totals		0	0	15	15		2
Fairfield FD	Camas	0	0	15	15	Tax Base	1
West Magic Fire Dist	Camas	0	0	8	8	Tax Base	2
County Totals		0	0	23	23		3

Fire Department Information by County
Personnel, Funding and Number of Stations*

FIRE DEPARTMENT	COUNTY	CAREER FIREFIGHTERS	VOLUNTEERS: PAID-PER-CALL	VOLUNTEERS: NO-PAY-PER-CALL	TOTAL FIREFIGHTERS	FUNDING	NUMBER OF STATIONS IN JURISDICTION
Caldwell FD	Canyon	43	25	0	68	Tax Base	2
Caldwell Rural FPD	Canyon	43	25	0	68	Tax Base	1
Meiba Rural FPD	Canyon	0	0	25	25	Tax Base	1
Middleton Rural FPD	Canyon	9	37	0	46	Tax Base	2
Nampa FD	Canyon	89	0	0	89	Tax Base	5
Parma Rural FPD	Canyon	3	0	30	33	Tax Base	2
Upper Deer Flat FD	Canyon	0	0	17	17	Tax Base	1
Wilder Rural FPD	Canyon	1	0	18	19	Tax Base	1
County Totals	188	87	90		365		15
Bancroft FD	Caribou	0	0	10	10	Tax Base	1
Caribou County FD	Caribou	0	13	0	13	Tax Base	1
Grace FD	Caribou	0	13	0	13	Tax Base	1
Soda Springs FD	Caribou	0	0	13	13	Tax Base	1
County Totals	0	13	36		49		4
Ace Fire Protection Assn Unit	Cassia	0	0	12	12	Tax Base	1
Albion FPD	Cassia	0	0	10	10	Tax Base	1
Burley FD	Cassia	10	22	0	32	Tax Base	1
Declo FD	Cassia	0	0	0	0	Tax Base	1
Oakley FD	Cassia	0	16	0	16	Tax Base	1
Raft River FPD	Cassia	0	0	21	21	Tax Base	3
County Totals	10	38	43		91		8
Dubois City FD	Clark	0	0	0	0	Tax Base	1
County Totals	0	0	0		0		1
Clearwater Potlatch Timber Protective Assn	Clearwater	17	0	0	17	Tax Base	4
Elk River VFD	Clearwater	0	0	8	8	Donations	1
Evergreen Rural Fire Dist	Clearwater	0	0	23	23	Tax Base	1
Grangemont FD	Clearwater	0	0	0	0	Tax Base	1
Greer Rural Fire Dist	Clearwater	0	0	0	0	Tax Base	1
Orofino FD	Clearwater	0	0	0	0	Tax Base	2
Pierce VFD	Clearwater	0	0	0	0	Tax Base	1
Sunnyside Rural Fire Dist	Clearwater	0	0	22	22	Tax Base	1
Twin Ridge Rural FD	Clearwater	0	0	25	25	Tax Base	1
Upper Fords Creek Rural FD	Clearwater	0	0	0	0	Tax Base	1
Weippe FD	Clearwater	0	0	0	0	Tax Base	1
County Totals	17	0	78		95		15
North Custer Rural Fire Dist	Custer	0	1	57	58	Tax Base	4
Sawtooth Valley Rural Fire Dist	Custer	0	0	19	19	Tax Base	1
South Custer Rural FPD	Custer	0	0	0	0	Tax Base	0
County Totals	0	1	76		77		5
Atlanta Rural FD	Elmore	1	0	8	9	Tax Base	1
Glenns Ferry/King Hill FD	Elmore	1	21	0	22	Tax Base	2
Mountain Home Rural FPD	Elmore	2	31	0	33	Tax Base	1
Mountain Home VFD	Elmore	2	32	0	34	Tax Base	4
Oasis VFD	Elmore	0	0	19	19	Tax Base	0
Prairie QRU & Fire	Elmore	0	0	0	0	Tax Base	
County Totals	6	84	27		117		8

Fire Department Information by County
Personnel, Funding and Number of Stations*

FIRE DEPARTMENT	COUNTY	CAREER FIREFIGHTERS	VOLUNTEERS:		TOTAL FIREFIGHTERS	FUNDING	NUMBER OF STATIONS IN JURISDICTION	
			PAID-PER-CALL	NO-PAY-PER-CALL				
Franklin County Fire Dist	Franklin	1	30	0	31	Tax Base	2	2
County Totals					31			
Island Park FPD	Fremont	0	0	0	0	Tax Base	4	4
North Fremont Fire Dist, Inc.	Fremont	0	20	0	20	Tax Base	1	1
South Fremont Fire Dist	Fremont	0	0	23	23	Tax Base	1	1
County Totals		0	20	23	43		6	6
Emmett FD	Gem	1	16	0	17	Tax Base	1	1
Gem County FPD #1	Gem	1	30	0	31	Tax Base	3	3
Gem County FPD #2	Gem	0	0	35	35	Tax Base	2	2
County Totals		2	46	35	83		6	6
Bliss Fire Dist	Gooding	0	0	12	12	Tax Base	1	1
Gooding City/Rural FD	Gooding	1	25	0	26	Tax Base	1	1
Hagerman FPD	Gooding	1	20	0	21	Tax Base	1	1
Wendell Rural Fire Dist/Wendell FD	Gooding	2	0	18	20	Tax Base	1	1
County Totals		4	45	30	79		4	4
BPC Volunteer Rural FD, Inc.	Idaho	0	0	17	17	Grants	1	1
Carrot Ridge Volunteer Fire Dist	Idaho	0	0	50	50	Subscription Dues	2	2
Cottonwood Rural Fire Dist	Idaho	0	0	22	22	Tax Base	1	1
Cottonwood VFD	Idaho	0	0	22	22	Tax Base	1	1
Elk City VFD	Idaho	0	0	6	6	Donations	1	1
Ferdinand FD	Idaho	0	0	12	12	Grants	1	1
Glenwood/Caribei Volunteer Fire Dist	Idaho	0	0	0	0	Subscription Dues	1	1
Grangeville Rural FD	Idaho	0	0	0	0	Tax Base	1	1
Harpster FPD	Idaho	0	0	22	22	Tax Base	1	1
Kooskia FD	Idaho	0	0	16	16	Tax Base	1	1
Ridge Runner FD	Idaho	0	0	20	20	Grants	1	1
Riggins City FD	Idaho	0	0	16	16	Tax Base	1	1
Salmon River Rural FD	Idaho	0	0	18	18	Subscription Dues	6	6
Secesh Meadow Rural Fire Dist	Idaho	0	0	10	10	Donations	0	0
Stites FD	Idaho	0	0	10	10	Tax Base	1	1
White Bird City/Rural FD	Idaho	0	0	15	15	Subscription Dues	1	1
County Totals		0	0	256	256		21	21
Central Fire Dist	Jefferson	3	80	0	83	Tax Base	4	4
Hammer FPD	Jefferson	0	0	0	0	Tax Base	1	1
Roberts Fire Dist	Jefferson	0	0	0	0	Tax Base	1	1
West Jefferson Fire Control Dist	Jefferson	0	20	0	20	Tax Base	2	2
County Totals		3	100	0	103		8	8
First Segregation Fire Dist	Jerome	0	12	0	12	Tax Base	2	2
Jerome City FD	Jerome	12	14	0	26	Tax Base	3	3
Jerome Rural Fire Dist #1	Jerome	0	18	0	18	Tax Base	2	2
County Totals		12	44	0	56		7	7

Fire Department Information by County
Personnel, Funding and Number of Stations*

FIRE DEPARTMENT	COUNTY	CAREER FIREFIGHTERS	VOLUNTEERS: PAID-PER-CALL	VOLUNTEERS: NO-PAY-PER-CALL	TOTAL FIREFIGHTERS	FUNDING	NUMBER OF STATIONS IN JURISDICTION
Coeur d'Alene FD	Kootenai	48	0	0	48	Tax Base	3
East Side FPD	Kootenai	0	24	0	24	Tax Base	3
Hauser Lake FPD	Kootenai	1	0	18	19	Tax Base	1
Kootenai County Fire & Rescue	Kootenai	50	0	25	75	Tax Base	8
Mica-Kidd Island FPD	Kootenai	2	0	24	26	Tax Base	1
Northern Lakes FPD	Kootenai	30	0	0	30	Tax Base	8
Region 1 HazMat Team	Kootenai	0	33	0	33	Tax Base	1
Spirit Lake FPD	Kootenai	8	0	22	30	Tax Base	3
Timberlake FPD	Kootenai	6	0	20	26	Tax Base	6
Worley FPD	Kootenai	5	0	14	19	Tax Base	5
County Totals		150	57	123	330		39
Bovill FPD	Latah	0	0	20	20	Tax Base	1
Deary Rural Fire Dist	Latah	0	0	20	20	Tax Base	2
Genesee FD	Latah	0	0	0	0	Tax Base	1
Julietta VFD	Latah	0	0	8	8	Tax Base	1
Kendrick VFD	Latah	0	0	0	0	Tax Base	1
Moscow VFD	Latah	4	0	77	81	Tax Base	3
Moscow Rural FPD	Latah	0	0	30	30	Tax Base	2
Potlatch Rural FPD	Latah	0	0	0	0	Tax Base	1
Troy VFD	Latah	0	0	44	44	Tax Base	1
County Totals		4	0	199	203		13
Elk Bend FPD	Lemhi	0	0	26	26	Tax Base	3
Leadore VFD	Lemhi	0	0	0	0	Donations	2
Lemhi County FPD #1	Lemhi	1	30	0	31	Tax Base	4
North Fork Fire Dist	Lemhi	0	0	0	0	Tax Base	0
Williams Lake VFD	Lemhi	0	0	3	3	Donations	1
County Totals		1	30	29	60		10
Craigmont FD	Lewis	0	16	0	16	Tax Base	1
Kamiah VFD/Rural FPD	Lewis	0	0	24	24	Tax Base	1
Nez Perce City/Rural FPD	Lewis	0	0	0	0	Tax Base	1
Reubens FD	Lewis	0	0	0	0	Tax Base	1
Winchester VFD	Lewis	0	0	10	10	Grants	1
County Totals		0	16	34	50		5
Dietrich Fire Dist	Lincoln	0	0	12	12	Tax Base	1
Richfield FPD	Lincoln	0	0	10	10	Tax Base	1
Shoshone City/Rural Fire Dist	Lincoln	0	14	0	14	Tax Base	2
County Totals		0	14	22	36		4
Madison FD	Madison	16	53	0	69	Tax Base	2
County Totals		16	53	0	69		2
Minidoka County FPD	Minidoka	1	50	0	51	Tax Base	3
Rupert City Fire & Rescue	Minidoka	1	23	0	24	Tax Base	1
West End FPD	Minidoka	1	18	3	22	Tax Base	1
County Totals		3	91	3	97		5

Fire Department Information by County
Personnel, Funding and Number of Stations*

FIRE DEPARTMENT	COUNTY	CAREER FIREFIGHTERS	VOLUNTEERS: PAID-PER-CALL	VOLUNTEERS: NO-PAY-PER-CALL	TOTAL FIREFIGHTERS	FUNDING	NUMBER OF STATIONS IN JURISDICTION
Big Canyon Fire Dist	Nez Perce	0	0	20	20	Tax Base	1
Clearwater Fire Svcs	Nez Perce	0	0	9	9	Subscription Dues	1
Culdesac VFD	Nez Perce	0	0	12	12	Tax Base	4
Lapwai FD	Nez Perce	0	0	10	10	Tax Base	1
Lewiston FD	Nez Perce	44	0	44	44	Tax Base	3
Nez Perce County FD	Nez Perce	1	0	22	23	Tax Base	2
Wheatland FPD	Nez Perce	0	0	25	25	Tax Base	1
County Totals		45	0	98	143		13
Oneida County Fire Dist/Malad FD	Oneida	0	0	16	16	Tax Base	2
County Totals		0	0	16	16		2
Bruneau FPD	Owyhee	0	0	6	6	Tax Base	1
Grand View Rural FPD	Owyhee	0	0	15	15	Tax Base	2
Homedale Rural FPD	Owyhee	2	0	18	20	Tax Base	1
Marsing City/Rural FPD	Owyhee	0	0	32	32	Tax Base	1
Murphy-Reynolds-Wilson FPD	Owyhee	0	0	28	28	Tax Base	4
Silver City Fire & Rescue, Inc.	Owyhee	0	0	10	10	Donations	1
County Totals		2	0	109	111		10
Fruitland FD	Payette	0	25	0	25	Tax Base	1
New Plymouth Rural Fire Dist	Payette	0	0	0	0	Tax Base	1
Payette City FD	Payette	3	25	0	28	Tax Base	1
Payette Rural Fire District	Payette			0	0		1
County Totals		3	50	0	53		4
American Falls Rural FPD	Power	0	18	26	44	Tax Base	1
Rockland Rural Fire Dist	Power	0	0	21	21	Tax Base	1
County Totals		0	18	47	65		2
Cataldo FPD	Shoshone	2	8	0	10	State Funding	1
Mullan VFD	Shoshone	0	0	23	23	Tax Base	1
Prichard/Murray VFD, Inc.	Shoshone	0	0	15	15	Fundraisers	2
Shoshone County FPD #1	Shoshone	4	0	0	25	Tax Base	2
Shoshone County FPD #2	Shoshone	7	0	30	37	Tax Base	4
Shoshone County FPD #3	Shoshone	0	25	0	25	Tax Base	1
St. Joe Valley Fire Dist	Shoshone	0	0	0	0	Tax Base	0
County Totals		13	54	68	135		11
Teton County FPD	Teton	18	7	0	25	Tax Base	3
County Totals		18	7	0	25		3
Buhl FD	Twin Falls	4	24	0	28	Tax Base	2
Castleford Fire Dist	Twin Falls	0	0	0	0	Tax Base	0
Filer FD	Twin Falls	0	0	0	0	Tax Base	1
Hansen City FD	Twin Falls	0	0	0	0	Tax Base	0
Rock Creek Rural FPD	Twin Falls	1	11	0	12	Tax Base	4
Salmon Tract Rural FPD	Twin Falls	0	0	0	0	Tax Base	0
Twin Falls FD	Twin Falls	39	0	0	39	Tax Base	3
County Totals		44	35	0	79		10

Fire Department Information by County Personnel, Funding and Number of Stations*

FIRE DEPARTMENT	COUNTY	CAREER FIREFIGHTERS	VOLUNTEERS: PAID-PER-CALL	VOLUNTEERS: NO-PAY-PER-CALL	TOTAL FIREFIGHTERS	FUNDING	NUMBER OF STATIONS IN JURISDICTION
Cascade Rural FPD	Valley	1	32	0	33	Tax Base	3
Donnelly Rural FPD	Valley	8	19	1	28	Tax Base	2
High Valley Fire Protection Assn	Valley	0	0	0	0	Tax Base	0
McCall FPD	Valley	12	32	0	44	Tax Base	2
Southern Idaho Timber Protective Assn	Valley	25	0	0	25	Tax Base	0
Yellow Pine Fire Dist	Valley	0	0	10	10	Tax Base	1
County Totals		46	83	11	140		8
Cambridge FPD	Washington	0	0	14	14	Tax Base	1
Midvale FPD	Washington	0	0	25	25	Tax Base	2
Weiser City Fire & Rescue	Washington	1	34	0	35	Tax Base	1
Weiser Rural FD	Washington	0	28	0	28	Tax Base	2
County Totals		1	62	39	102		6
State Totals		1394	1725	2191	5310		431

*The information in this document was compiled from fire department surveys submitted by the fire agencies and other sources.

2013 Wildland Fires



Smokey & Sparky - Photo provided by Knute Sandahl, Chief Deputy, State Fire Marshal's Office

The remaining sections of this annual report show excerpts from information compiled by:

National Interagency Fire Center
Idaho Department of Lands
Idaho Firewise

This combined information demonstrates the significant impact of wildland fires and the efforts to prevent them across the great state of Idaho. References showing how to access the complete reports from these agencies can be found on page 68.



Pine Creek Fire - Boise County - Photo from Wilderness Ranch Fire Protection District

Pages 61-66 are excerpts taken directly from the
Statistics from Idaho Department of Lands
Year-End Fire Report
For Calendar Year (CY) 2013

2013 LIGHTNING VS HUMAN FIRES						
Year	# of Lightning Fires	Lightning Acres Burned	# of Human Fires	Human Acres Burned	Total # of Fires	Total Acres Burned
2013	212	2,554	110	4,654	322	7,208
2012	81	295	106	4,460	187	4,755
2011	113	289	136	727	249	1,016
2010	86	1,729	97	1,736	183	3,465
2009	233	274	119	182	352	457
31-YR Avg.	200	6,981	168	2,793	368	9,774

Minor discrepancies exist due to rounding

FIRES IN THE WILDLAND URBAN INTERFACE

The wildland urban interface (WUI) consists of areas where human habitation adjoins, or is mixed with, the wildland and wildland fuels. The character of the WUI ranges from urban areas adjoining wildlands to isolated ranches or cabins. Using county WUI designations, approximately 78 percent of the lands IDL protects from wildfire fall within the WUI.

When a fire occurs within the WUI, the job of firefighting becomes more complex. This year was atypical in that the WUI fire cost per acre was \$276 lower than in the non WUI. Since 1993, the number of structures in the WUI has nearly doubled. As the number of structures in the WUI continues to increase, concerns over public safety and the protection of improvements increases.

In 2013, 46 percent of IDL fires started in the WUI, burned 51 percent of the acreage, and accounted for 47 percent of the total cost of suppression. Of the WUI fires, 61 percent were human-caused. The highest human-caused ignition sources in the WUI were miscellaneous and debris burning. Equipment use fires burned the most area and were the most expensive. In comparison, fires outside the WUI accounted for 54 percent of the ignitions, and burned 49 percent of the blackened area.

NUMBER OF WUI FIRES BY CAUSE WITH COSTS					
General Cause	# of Fires	% of Fires	Total Cost	% of Cost	Cost/ Fire
Human-Caused					
Miscellaneous	25	33%	\$450,831	11.7%	\$18,033
Debris Burning	18	24%	\$91,623	2.4%	\$5,090
Equipment Use	14	18%	\$3,102,916	80.6%	\$221,637
Campfire	11	14%	\$5,680	0.1%	\$516
Children	3	4%	\$7,539	0.2%	\$2,513
Smoking	2	3%	\$18,161	0.5%	\$9,080
Arson	2	3%	\$1,921	0.0%	\$960
Railroad	1	1%	\$171,338	4.5%	\$171,338
Total Human	76	100%	\$3,850,008	100%	\$50,658
Human and Lightning					
Lightning	73	49%	\$2,483,896	39%	\$34,026
Human	76	51%	\$3,850,008	61%	\$50,658
Grand Total	149	100%	\$6,333,904	100%	\$42,509

Minor discrepancies exist due to rounding

WUI ACRES BURNED BY CAUSE WITH COSTS					
General Cause	Acres Burned	% of Acreage	Total Cost	% of Cost	Cost/ Acre
Human-Caused					
Equipment Use	2,889.6	89%	\$3,102,916	81%	\$1,074
Railroad	200.0	6%	\$171,338	4%	\$857
Miscellaneous	94.9	3%	\$450,831	12%	\$4,753
Debris Burning	40.9	1%	\$91,623	2.4%	\$2,240
Smoking	8.8	0.3%	\$18,161	0.5%	\$2,076
Campfire	1.0	0.0%	\$5,680	0.1%	\$5,623
Children	0.8	0.0%	\$7,539	0.2%	\$10,053
Arson	0.6	0.0%	\$1,921	0.0%	\$3,202
Total Human	3,236	100%	\$3,850,008	100%	\$1,190
Human and Lightning					
Lightning	405.4	11%	\$2,483,896	39%	\$6,128
Human	3,236	89%	\$3,850,008	61%	\$1,190
Grand Total	3,642	100%	\$6,333,904	100%	\$1,739

Minor discrepancies exist due to rounding

Human-caused fires burned 65 percent of the acreage in 2013. Equipment use burned the highest number of acres within the human-caused category. Human-caused fires cost a total of \$5,221,662 (39 percent of the total). Of this amount, \$64,802 (1 percent of human-caused) of the costs was from fires attributable to negligence, and responsible parties have been billed. Some investigations are ongoing. Additional amounts may be billed.

NUMBER OF FIRES BY CAUSE, WITH COSTS					
General Cause	# of Fires	% of Fires	Cost	% of Cost	Cost/Fire
Human-Caused					
Miscellaneous	37	34%	\$1,012,937	19.4%	\$27,377
Debris Burning	24	22%	\$97,597	1.9%	\$4,067
Equipment Use	23	21%	\$3,887,582	74.5%	\$169,025
Campfire	15	14%	\$11,874	0.2%	\$792
Arson	4	4%	\$13,791	0.3%	\$3,448
Smoking	3	3%	\$19,004	0.4%	\$6,335
Children	3	3%	\$7,539	0.1%	\$2,513
Railroad	1	1%	\$171,338	3.3%	\$171,338
Total Human	110	100%	\$5,221,662	100%	\$47,470
Human and Lightning					
Lightning	212	66%	\$8,298,178	61%	\$39,142
Human	110	34%	\$5,221,662	39%	\$47,470
Grand Total	322	100%	\$13,519,840	100%	\$41,987

Minor discrepancies exist due to rounding

ACRES BURNED BY CAUSE, WITH COSTS						
General Cause	Acres Burned	% of Acreage	Cost	Cost/ Acre	Bill Amount	Amount Collected
Human-Caused						
Equipment Use	3,280	70%	\$3,887,582	\$1,185	\$2,897	\$431
Miscellaneous	973	21%	\$1,012,937	\$1,041	\$0	\$0
Railroad	200	4%	\$171,338	\$857	\$0	\$0
Arson	148	3%	\$13,791	\$93	\$0	\$0
Debris Burning	42	1%	\$97,597	\$2,343	\$60,428	\$2,085
Smoking	9	0%	\$19,004	\$2,147	\$1,009	\$0
Campfire	2	0%	\$11,874	\$0	\$469	\$469
Children	1	0%	\$7,539	\$0	\$0	\$0
Total Human	4,654	100%	\$5,221,662	\$1,122	\$64,802	\$2,984
Human and Lightning						
Lightning	2,554	35%	\$8,298,178	\$3,249		
Human	4,654	65%	\$5,221,662	\$1,122	\$64,802	\$2,984
Grand Total	7,208	100%	\$13,519,840	\$1,876	\$64,802	\$2,984
Collections from prior years negligent fires						\$19,484
Total Calendar Year Collections						\$22,468

Minor discrepancies exist due to rounding

NUMBER OF FIRES BY CAUSE, BY DISTRICT										
District	Tot # Fires	Lightning	Misc	Debris Burning	Equip Use	Camp Fire	Arson	Smoking	Children	Rail Road
CPTA	69	51	6	6	4	1			1	
SITPA	48	32	8	1	2	5				
Southwest Idaho FPD	48	38	1	3	5	1				
Craig Mountain FPD	29	21	3		2	1	2			
West St. Joe FPD	25	15	2	5	1	1	1			
Priest Lake FPD	18	13		1	1	3				
Maggie Creek FPD	18	8	4		4	1	1			
Mica FPD	15	5	3	4	1			2		
Pend Oreille FPD	14	8	3	1	1				1	
Kootenai Valley FPD	13	4	4	1	1	1		1	1	
Cataldo FPD	13	8	2	2	1					
Ponderosa FPD	12	9	1			1				1
Total	322	212	37	24	23	15	4	3	3	1

ACRES BURNED, BY CAUSE, BY DISTRICT										
District	Total Acres	Lightning	Equip Use	Misc	Rail Road	Arson	Debris Burning	Smoking	Camp Fire	Children
Southwest Idaho FPD	3,201.4	399.3	2,798.8	0.1			3.0		0.3	
Craig Mountain FPD	1,427.2	569.5	0.4	710.1		147.2			0.1	
CPTA	1,342.7	1,230.3	1.2	103.8			7.1		0.1	0.3
Maggie Creek FPD	865.2	310.7	429.1	124.9		0.5			0.0	
Ponderosa FPD	205.3	4.7		0.5	200.0				0.1	
Mica FPD	115.6	5.4	48.0	28.2			25.3	8.8		
SITPA	20.2	13.8	0.2	1.4			4.2		0.6	
Priest Lake FPD	15.5	14.6	0.5				0.1		0.3	
Cataldo FPD	6.1	2.3	1.0	1.8			1.0			
West St. Joe FPD	3.7	2.1	0.1	0.6		0.1	0.7		0.1	
Pend Oreille FPD	3.5	1.0	1.0	0.8			0.3			0.4
Kootenai Valley FPD	1.8	0.4	0.2	0.8			0.1	0.1	0.1	0.1
Total	7,208.1	2,554.1	3,280.4	972.9	200.0	147.8	41.7	8.9	1.7	0.8

Minor discrepancies exist due to rounding

FIRES OVER 100 ACRES			
Fire Name	District	Size	Cost
Pine Creek	Southwest Idaho FPD	2,797	\$2,986,138
Incendiary Creek	CPTPA	1,100	\$3,221,452
Triumph Lane	Craig Mountain FPD	675	\$264,756
Ought 7	Maggie Creek FPD	388	\$727,767
Summit	Southwest Idaho FPD	370	\$1,745,363
Frenchy Creek	Craig Mountain FPD	350	\$19,762
Pardee	Maggie Creek FPD	309	\$752,034
Boyer	Ponderosa FPD	200	\$171,338
Cottonwood Creek	Craig Mountain FPD	166	\$220,315
Waha	Craig Mountain FPD	147	\$1,077
Too Kush	Maggie Creek FPD	116	\$152,322
Farmers Road	CPTPA	110	\$548,318
Total		6,728	\$10,810,639

2013 CONSECUTIVE DATES OF HIGHEST FIRE OCCURANCE		
Month	Day	# Fires
7	26	2
7	27	2
7	28	4
7	29	2
7	30	2
7	31	2
8	1	21
8	2	3
8	3	4
		42
8	8	6
8	9	3
8	10	3
8	11	7
8	12	12
8	13	2
8	14	3
8	15	3
		39
9	2	2
9	3	2
9	4	7
9	5	12
9	6	8
9	7	8
		39

2013 MULTIPLE FIRES PER DAY BY DISTRICT			
District	# of Days with Multi-Fires	Total # Multi-Fires	Most Fires in 1 Day
CPTPA	16	50	6
SITPA	10	28	4
Southwest Idaho FPD	8	24	4
Craig Mountain FPD	6	15	3
West St. Joe FPD	4	10	4
Priest Lake FPD	3	7	3
Maggie Creek FPD	2	4	2
Kootenai Valley FPD	2	4	2
Cataldo FPD	1	6	6
Ponderosa FPD	1	2	2
Pend Oreille FPD	1	2	2
Mica FPD	0	0	0
Total	54	152	6

TEN MOST EXPENSIVE FIRES IN 2013			
Fire Name	District	Size	Total Cost
Incendiary Creek	CPTPA	1100	\$3,221,452
Pine Creek	Southwest Idaho FPD	2797	\$2,986,138
Summit	Southwest Idaho FPD	370	\$1,745,363
Pardee	Maggie Creek FPD	309	\$752,034
Ought 7	Maggie Creek FPD	388	\$727,767
Farmers Road	CPTPA	110	\$548,318
Brown Road	CPTPA	59	\$408,321
Triumph Lane	Craig Mountain FPD	675	\$264,756
Cottonwood Creek	Craig Mountain FPD	166	\$220,315
Boyer	Ponderosa FPD	200	\$171,338
Total		6,174	\$11,045,800

2013 AVIATION SUMMARY									
Aircraft	Total Flight Hours	IDL Flight Hours	Reimbursable Flight Hours	% Reimbursable Flight Hours	Availability	Operating	Total	Reimbursable	IDL Obligation
Helicopter Total	445	278	166	37%	\$938,455	\$708,241	\$1,646,695	\$418,284	\$1,228,412
Fire Boss Total	206	33	173	84%	\$288,671	\$870,660	\$1,159,331	\$823,534	\$335,797
SEAT * Total	498	287	212	43%	\$794,394	\$1,420,134	\$2,214,528	\$771,471	\$1,443,058
AVIATION TOTAL	1149	598	552	48%	\$2,021,519	\$2,999,035	\$5,020,555	\$2,013,288	\$3,007,266

* Total of 4 that were stationed at various locations and times across the state

Minor discrepancies exist due to rounding

SUPPRESSION COST PER FIRE			
District	# of Fires	Suppression Cost	District Cost/Fire
CPTPA	69	\$4,391,698	\$63,648
Southwest Idaho FPD	48	\$5,367,875	\$111,831
SITPA	48	\$354,715	\$7,390
Craig Mountain FPD	29	\$899,311	\$31,011
West St. Joe FPD	25	\$61,768	\$2,471
Priest Lake FPD	18	\$149,564	\$8,309
Maggie Creek FPD	18	\$1,826,629	\$101,479
Mica FPD	15	\$89,919	\$5,995
Pend Oreille FPD	14	\$35,367	\$2,526
Kootenai Valley FPD	13	\$31,973	\$2,459
Cataldo FPD	13	\$62,893	\$4,838
Ponderosa FPD	12	\$248,128	\$20,677
Total	322	\$13,519,841	\$41,987

Minor discrepancies exist due to rounding

SUPPRESSION COST PER ACRE BURNED			
District	# of Acres	Suppression Cost	District Cost/Acre
Southwest Idaho FPD	3,201	\$5,367,875	\$1,677
Craig Mountain FPD	1,427	\$899,311	\$630
CPTPA	1,343	\$4,391,698	\$3,271
Maggie Creek FPD	865	\$1,826,629	\$2,111
Ponderosa FPD	205	\$248,128	\$1,209
Mica FPD	116	\$89,919	\$778
SITPA	20	\$354,715	\$17,604
Priest Lake FPD	16	\$149,564	\$9,649
Cataldo FPD	6	\$62,893	\$10,310
West St. Joe FPD	4	\$61,768	\$16,876
Pend Oreille FPD	4	\$35,367	\$10,105
Kootenai Valley FPD	2	\$31,973	\$17,763
Total	7,208	\$13,519,841	\$1,876

Minor discrepancies exist due to rounding

NUMBER OF AIRCRAFT USED ON FIRES		
District	Air Tankers	Helicopters
Priest Lake FPD	4	4
Kootenai Valley FPD	0	1
Mica FPD	2	2
Pend Oreille FPD	0	0
Cataldo FPD	1	3
West St. Joe FPD	0	1
Ponderosa FPD	5	1
Maggie Creek FPD	11	13
Craig Mountain FPD	10	15
Southwest Idaho FPD	22	28
SITPA	9	12
CPTPA	6	27
Total	70	107

The above matrix illustrates the number of aircraft used on fires in the Forest Protective District. It does not reflect the amount of use per fire.

RANGELAND FIRE PROTECTION ASSOCIATIONS (RFPAs) IN IDAHO

The first RFPAs were established prior to the 2012 fire season, and total of four RFPAs participated in the 2013 fire season. Currently, the four groups are in southern Idaho, located in Owyhee, Elmore, and Twin Falls Counties. To date, 170 RFPAs members have been trained. The four RFPAs combined protect 660,000 acres of private rangeland that was previously unprotected, as well as providing secondary protection on 2.9 million acres of federal and State land.



This year was a great success for all four RFPAs:

Mountain Home, Owyhee, Saylor Creek, and Three Creek. Between them, they played a vital role in actively suppressing and limiting acres burned on 32 fires. These fires ranged from a small 1/10th of an acre, to the large Pony Complex near Mountain Home.

While they were critical in helping suppress the numerous fires, the relationships that developed along the way were just as important. This is a testament to the commitment and dedication that the members from all RFPAs and the Boise and Twin Falls US Department of Interior, Bureau of Land Management (BLM) Districts put in to making it successful. RFPAs Members knowledge of the rangeland was invaluable. They know access routes, water resources, fences, old burn scars, etc., which helped BLM resources arrive on scene quickly, make sound decisions, and actively engage in suppressing these fires. There were numerous times the RFPAs were ready and willing with tractor disks, dozers, and other equipment to lend a hand in the suppression efforts. Strong leadership is a key factor in making an RFPAs a success. The leadership in all four RFPAs run very good programs and maintain good communication with the Idaho Department of Lands (IDL), the BLM, and their association membership.

Currently, there are six additional areas where landowners have begun to have the conversation of starting an RFPAs. At this point, it looks like one of them will be up and running for the 2014 fire season.

Significant Fire Activity

(National Interagency Fire Center Wildland Fire
Summary and Statistics Annual Report 2013)

Fires and Complexes over 40,000 Acres in Idaho in 2013

Name	Acres	Estimated Cost	Cause
Pony Complex	149,384	\$4,000,000	Lightning
Elk Complex	131,258	\$10,720,000	Lightning
Beaver	111,490	\$26,500,000	Lightning

National Report of Wildland Fires and Acres in Idaho in 2013

(Statistics from the National Interagency Fire Center Fire
and Aviation Management Web Applications Program)

	Wildland Fires	# Acres Burned	Prescribed Burns	# Acres Burned
IDAHO	1,471	722,204	312	28,894
USA	47,579	4,319,546	18,764	2,000,040



Referenced Website Links

National Interagency Fire Center Information – Wildland fire statistics

http://www.nifc.gov/fireInfo/fireInfo_statistics.html

Idaho Firewise

<http://www.idahofirewise.org/library/>

Idaho Department of Lands 2013 Fire Report

<http://www.idl.idaho.gov/fire/2013-year-end-fire-report.pdf>

Idaho State Fire Marshal

<http://www.doi.idaho.gov/sfm/firemars.aspx>

A very special thank you to those who shared their expertise, data and pictures in the making of this report:

Idaho Fire Departments

Office of the State Fire Marshal

Department of Insurance

National Interagency Fire Center

Idaho Department of Lands

Idaho Firewise

Idaho Department of Labor

Front cover photo is of a structure fire in Washington County provided by Susan McCoy with the Weiser Fire Department. The photo on the inside of the back cover is from the Idaho Firewise library illustrations and the photo on the back cover is a stock photo.

Idaho State Fire Marshal

700 West State Street

P. O. Box 83720

Boise, Idaho 83720-0043



Defensible Space

**30 ft.
minimum**



