

A firefighter in silhouette is shown in profile, wearing a helmet and holding a radio. The background is a bright, intense fire with orange and yellow flames, creating a dramatic and high-contrast scene.

Fire
in Idaho
2000

Nineteenth
Annual Report

Dedication

We would like to dedicate this publication to approximately 800 paid and over 4,000 volunteer men and women who have committed themselves to saving lives and property in the face of adversity:

The Idaho Firefighters

A Message from State Fire Marshal Don McCoy



As with previous annual reports it is an honor for me to submit this report of the activities for the State Fire Marshal's office. This includes the emergency response activities of the fire departments that continue to report their responses to this office.

I feel it necessary to explain that this annual report does not contain the quantity of information regarding emergency responses that has been present in past annual reports. We have been experiencing difficulty with the Incident Reporting System. We are currently unable to supply complete statistical information while converting from the old 4.1 version to the new 5.0 version.

I mentioned in last year's annual report the introduction of new codes into the fire and building code arena. This process still continues today. Too often many of us are happy to watch others do the work and then blame them if it appears that mistakes were made. I encourage all of you to become involved with the code process. Do not let this opportunity pass.

Civilian fire deaths in the state continue a downward trend with 9 deaths recorded in the year 2000 compared with 15 in 1999 and 19 in 1998. This is a very positive trend and may reflect the use of smoke detectors and the result of fire prevention education being administered by the local fire authorities.

Total responses reported by local fire departments showed a slight increase for 2000 and were 29,829 compared to 28,716 for 1999. With the population growth the state is experiencing this is also a positive trend. Reported structure fires increased from 1,452 to 1,839. The total reported dollar loss by fire increased by \$1,757,842 to \$36,872,839. One large fire can cause this to vary greatly.

I want to thank my staff and the local fire departments for their contribution, for without them this report would not be possible. I encourage you to continue your support of your community through prevention, education and emergency response. Your community appreciates everything you do. Reporting emergency responses is a vital part of your duties. Statistics are becoming more valuable everyday. They help with grant applications as well as tell the story of your community needs.

Fire

in Idaho

2000

Governor
Dirk Kempthorne

Department of Insurance
Mary L. Hartung, Director

Idaho State Fire Marshal
Don McCoy

Mission Statement

The State Fire Marshal's Office participates in and coordinates an integrated statewide system designed to protect human life from fire and explosions through fire prevention and the investigation of fires. The program involves fire prevention activities, arson investigations, and the operation of various statistical systems, including the Idaho Fire Incident Reporting System (IFIRS).

Fire is a friend and an enemy. As a friend, it cooks our food and heats our homes. As an enemy, it can destroy us, our loved ones, and everything we own.

This report describes the consequences of unfriendly, uncontrolled fire. It can be used to target educational programs, improve building technologies, increase code enforcement activities, and identify product failure.

The State Fire Marshal's office thanks those departments which submitted their data for inclusion in this report.

We, and the citizens of Idaho, thank the courageous men and women who continue to provide fire and emergency medical services throughout the State.

Contents

PART I - STATE FIRE MARSHAL DIVISION

Organizational Chart/Advisory Board	2
Fire Prevention	3
Fire and Arson Investigations	5
Certification and Licensing	8
Idaho Fire Incident Reporting System (IFIRS)	9

PART II - FIRE STATISTICS

Total Impact

Incident Summary	11
Fire Calls by Month	12
Structure Fires	13
Residential Fires by Area	13

Casualties

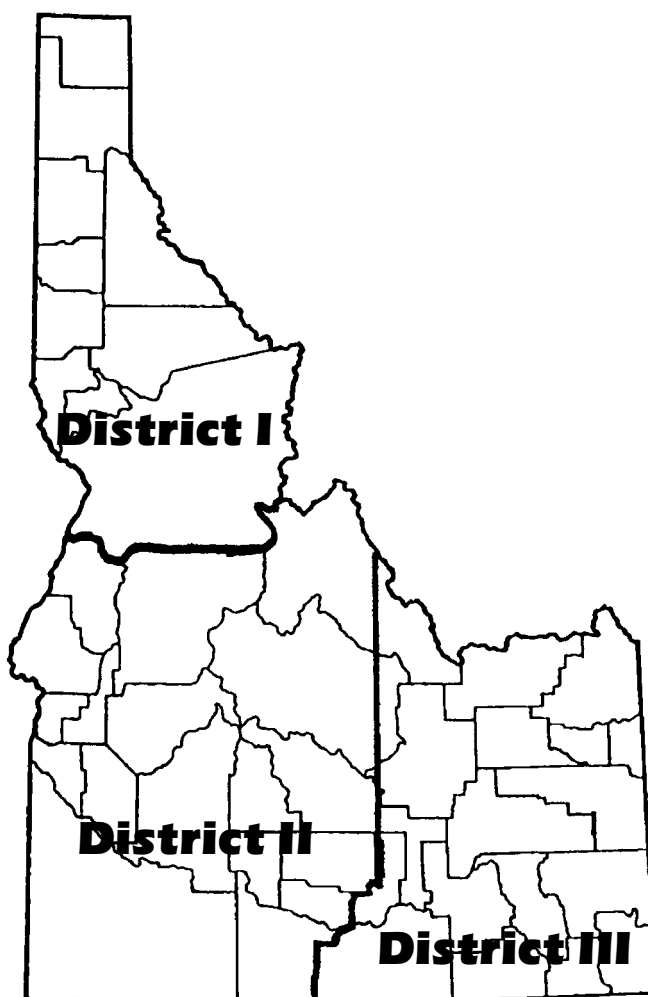
Firefighter Injuries	14
Civilian Injuries and Fatalities	15

PART III - PARTICIPANTS

Fire Department Activity Report	16
---------------------------------------	----

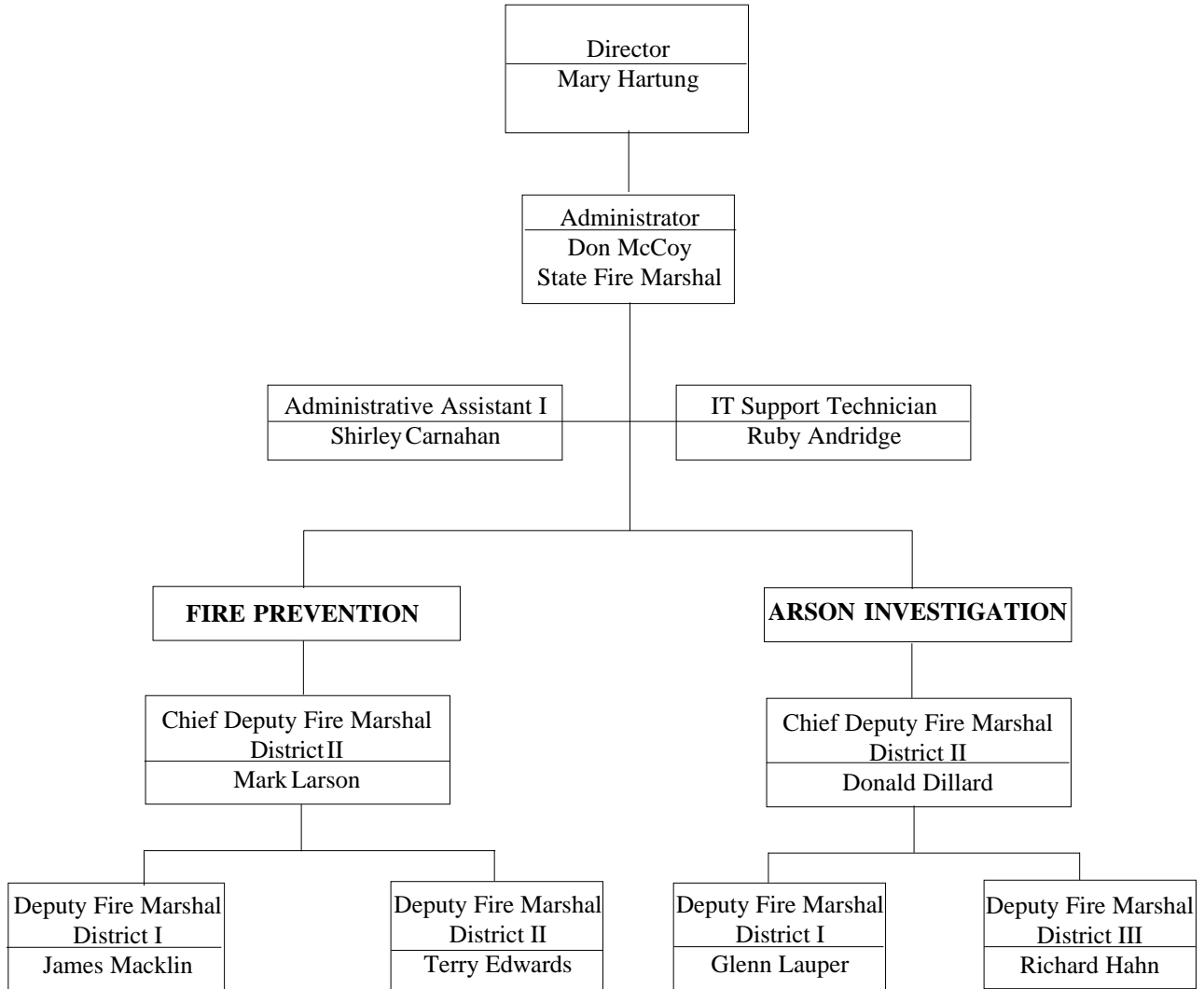
PART I

State Fire Marshal Activity Reports



This section is made up of reports from employees of the Idaho State Fire Marshal's Office.

State Fire Marshal Organizational Chart



Advisory Board

Ron Clark, Twin Falls FD
 Bob Drake, Idaho Falls FD
 Doug Brown, Caldwell FD
 Bill Cowin, St. Maries City/Rural FD
 Steve Cooper, Lewiston FD
 Bruce Alcott, Caldwell FD
 Bart Lassman, Wood River Fire & Rescue

Ben Estes, Pocatello FD
 Roland Clark, Idaho Falls FD
 Dennis Johnson, Boise FD
 Renn Ross, Boise FD
 Dale Costa, Kellogg FD
 Cal Clevenger, North Ada County Fire & Rescue

Fire Prevention

The Fire Prevention Section has the responsibility of providing a statewide program for fire prevention. Duties include the inspection of buildings and the review of new construction plans upon request. Plan reviews are conducted on all state buildings as per the Governor's Executive Order 98-02. The certification of fire inspectors is accomplished by teaching the 24-hour Uniform Fire Code class and administering the certification test. Basic fire prevention and fire inspection classes are also taught. Assistance is given to local fire jurisdictions upon request.

Fire Prevention Activities	
Fire Inspections	146
Cause and Origin Investigations	13
Fire Code Interpretations and Assistance	3,349
Business Meetings	170
Official Contacts	360
Public Presentations	11
Training Courses Given	30
Training Courses Taken	38
Plans Review	200

Deputy Fire Marshals are available to assist the fire service in any way possible and are proud of each fire department's efforts in continuing to solve fire safety and protection problems. Their challenge is to educate the fire service and the public to the benefits of the fire code and its uniform application.

DISTRICT I

**Jim Macklin, Deputy Fire Marshal
Lewiston, Idaho**



The year 2000 was not unlike past years, busy! The Western Fire Chiefs Association and International Fire Chiefs Association appointed me as a representative to the NFPA Fire Code Development Committee. I now have been appointed by the International Fire Chiefs Association to a committee to recommend the fire code to endorse. I will be happy to work with you regarding changes you may want to make to any NFPA code or standard.

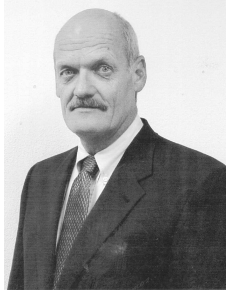
During 2000, I reviewed plans for state-owned buildings, schools and other non-government construction projects. The University of Idaho, Lewis and Clark College, and North Idaho College continue to expand, requiring walk-through inspections with architects and engineers and meetings to assure code requirements are met.

I have conducted four Uniform Fire Code classes, one of which included 38 students from the five northern counties. I also assisted Terry Edwards with a code class at the annual fire school in Montpelier.

I want to thank the fire departments of District I for their cooperation, assistance and, most of all, for the friendship that exists only in the brotherhood of the fire service.

DISTRICT II

Mark Larson, Chief Deputy State Fire Marshal Boise, Idaho



This is my first of what I hope will be many contributions to the annual report from the office of the Idaho State Fire Marshal. I have enjoyed the opportunities this position has afforded me in this past year. I have had the chance to work with many of the departments in District II and have been able to travel throughout Idaho.

We need to continue to work together to meet the challenges that face those of us dealing with fire prevention and the future. These include code adoption and enforcement, education, public relations, training, manpower, time and money, and the political realities of trying to get “them” to “do it right.”

Bill Wallis, Idaho’s first State Fire Marshal, pointed out in the first annual report issued in 1983 that “prevention is going to have to become a part of the fire service delivery system in all areas of the state... if we are to stay ahead of the game.” These words are as vitally important and true today as they were then. This office looks forward to assisting you to the best of our capabilities with the demands on your time in dealing with fire prevention.

DISTRICT III

Terry Edwards, Deputy State Fire Marshal Idaho Falls, Idaho



Where did the time go? It seems the year 2000 just started a few short weeks ago and it’s already over. They say time passes faster the older you get. I’d like to think it goes faster because I’m staying busy. In any case, the past year was spent performing routine duties such as conducting plan reviews, inspections, fire code classes and assisting the fire departments in District III with code research and interpretations. Time was spent attending classes and seminars to hone skills and increase knowledge. The District III offices were also consolidated, so moving and getting re-organized took up some of the time. A number of fire departments in District III did not request assistance during the year, so time was

scheduled to visit with them.

The biggest challenge for the upcoming year is still going to be deciding which fire code will be adopted by the state and local jurisdictions. It’s obvious there are mixed feelings among the fire service in Idaho as to which code should be used. At the present time, the choices appear to be the International Fire Code 2000, Uniform Fire Code 2000, NFPA 1, or staying with the Uniform Fire Code 1997. The adoption of a statewide building code may limit the choices. Loyalty to the current fire code should not be our only reason for supporting one code over another. If the fire service in Idaho is to have a positive influence on the code adoption process, you must become familiar with all possible choices, make an informed decision on which code to support and get involved as a cohesive group to make our needs known.

My priorities for the upcoming year are to stay in close contact with fire departments in District III and continue to assist them with plan reviews, inspections, classes and other needs. Increasing my knowledge and skills will also continue to be a high priority.

As always, I have enjoyed working with the fire service throughout the state, and I'm looking forward to working and visiting with all of you in the upcoming year.

Fire and Arson Investigations

The Fire and Arson Investigations Section has the responsibility to investigate fires and assist in the prosecution of arson at the request of local units of government. Upon request, they assist in the determination of the origin and cause of fires. They can also assist in any follow-up investigation required and serve as expert witnesses in the adjudication of arson cases. Through Emergency Services Training, the Fire/Arson Detection class is provided upon request. This section acts as a coordinator/trainer for local jurisdictions in the formation of Arson Task Force Teams.

Arson and Fraud Activities	
Arson Investigations	27
Accidental Fires/Undetermined	77
Business Meetings	212
Official Contacts	321
Training Courses Given	10
Training Courses Taken	35
Telephone Assistance and Follow-up	2,484

It is the goal of these deputies to continue to support local law enforcement agencies and fire departments in recognizing and investigating arson fire and to assist in the prosecution of those responsible.

DISTRICT I
Glenn Lauper
Deputy State Fire Marshal
Coeur d'Alene, Idaho



Each year we are privileged to report to you, our customers, our activities and accomplishments in each region. It is again my pleasure to announce that local, state and federal fire and law enforcement authorities continue to work closely together. They have solved complex fire and explosion investigations and successfully charged and prosecuted those persons responsible for violations of the Idaho Fire Code.

The men and women assigned to work on these cases in northern Idaho have been faced with new challenges and have demonstrated incredible profession-

alism in successful outcomes in several high profile cases. The following is a brief summary of some of the cases this office assisted with last year.

In June of 2000, in Worley, Idaho, bottle rockets were found to have been the cause of an extensive fire in a tribal housing apartment building that left four families homeless.

In July of 2000, this office assisted local and federal agencies in the investigation of several explosions including the recovery of pipe bombs used to damage businesses in Kootenai County. No arrests have been made in this continuing investigation.

In October, two chemical reaction bombs were ignited inside a vehicle next to an occupied residence in Coeur d' Alene resulting in four adults being charged with first degree arson and use of a destructive device.

Just days before Christmas, the jury returned a guilty verdict on Dale Schackelford on all six felony counts. This included two counts of homicide, arson and conspiracy to commit arson in connection with these crimes that occurred in 1999 in Latah County. Schackelford, along with three other co-defendants who had pled guilty to their part in this crime, are awaiting sentencing. Latah County Deputy Prosecuting Attorneys Eckmann and Christensen, along with the detectives from the Latah County Sheriff's Office, have been credited with the success of a case some described as "the most complex and compelling trial" in which they had ever been involved.

Along with the fire and arson investigations we normally become involved with, we also assisted with eight explosion investigations and three fires associated with illegal manufacturing of methamphetamine.

As always, it is my pleasure and I am grateful for the opportunity to work with each and every one of you and I look forward to a new year and all of the challenges that lay ahead. Stay safe out there.

DISTRICT II
Don Dillard
Chief Deputy State Fire Marshal
Boise, Idaho



In reviewing the arson investigations conducted by this office in the year 2000 and the subsequent court actions, it is interesting to note that there has been a definite swing toward the kind of evidence admitted and how it is presented in the courts. These cases involved arson/homicide, arson/spite crime, and arson to cover-up crimes in other jurisdictions. Previously, physical evidence spoke for itself and was basically accepted by the courts. Now it's not only the physical evidence that counts but how it is presented and by whom, i.e., are you qualified to speak to the subject? These issues are not only becoming more prevalent in the complex cases but in trials that only a few years ago were considered "slam-dunk" cases.

Some of the issues dealt with in these cases were as minor as an individual's photography qualifications and the qualifications of the individual who took the evidence and/or kept the evidence log. There are bigger issues such as the qualifications of the investigator conducting the

origin and cause and whether or not his training and education was such that it allowed him to formulate a hypothesis as to the cause of the fire. The relevance, where fire departments in smaller jurisdictions are trying to do everything on their own, of such methods may now jeopardize their position if the case is taken to court.

There are no easy answers to these problems, but there are ways to minimize them. I suggest that on each fire to which you respond include at least one local law enforcement person to assist. As firemen, your past experience and training helps you determine the origin and cause of the fire. In some cases, the training is not adequate for in-depth interviewing and collecting and preservation of evidence. Law enforcement people on the other hand, get training in areas of photography, evidence collection and diagramming, a must in a properly conducted arson investigation. By incorporating law enforcement as part of your investigation team, it will make your job easier and enhance the integrity of the results of your investigation.

Another issue which keeps coming up in court, in civil and criminal actions, is the issue of spoliation of evidence. Investigators who failed to act with reasonable care in causing destruction, damage to, concealment of, or loss of such evidence may be subject to both civil and criminal liability.

These are but a few issues faced by fire investigators today. Proper training and the use of the expertise available to you can minimize most of the negative results. The State Fire Marshal's Office is available to assist you in your training needs.

DISTRICT III
Richard Hahn
Deputy State Fire Marshal
Idaho Falls, Idaho



Training and fire investigations are on the increase in District III. Fire cause and origin training is helping all departments to become aware of the need for good investigations and recognizing the support that the State Fire Marshal's office can offer. I believe this increased interest will contribute to discovering the incendiary fire and prosecution of the arsonist.

Fire cause and origin classes were offered at the Idaho State Fire School and the South Idaho Fire Academy. This class will again be offered at the Idaho State Fire School. It receives a great deal of interest from departments of all sizes. This class provides the ongoing training needed to keep up to date with the new investigative techniques, technology and an introduction to NFPA 921, Guide for Fire and Explosion Investigations.

By determining an accurate cause of a fire, we can contribute to the development of fire prevention codes, standards, and training and avoid incidents.

Assistance has been requested and given to law enforcement and fire agencies from all eight counties in Region III. I believe that if task forces could be developed on a countywide system it would benefit

the smaller communities that do not have the opportunity to investigate many fires. Each investigation of a fire is an educational experience from which all benefit.

Deputy State Fire Marshal Terry Edwards and I are now located in an office at the Exchange Plaza on 17th Street in Idaho Falls. This places us in a better location to serve District III.

I will continue to offer and enlist the support of local fire and law enforcement agencies in developing plans for proper fire investigations, which is fundamental to the protection of lives and property to the citizens of Idaho.

Certification and Licensing

Shirley Carnahan
Administrative Assistant I



Rule 18.01.43 Fire Inspector Certification

This rule ensures that fire inspectors meet a minimum standard. Firefighters must complete a 24-hour Uniform Fire Code class and pass an examination. Certification renewal is due each year with retesting required every third year.

Fire Inspector Certifications – 574

Rule 18.01.49 Fire Protection Sprinkler License

This sets standards and ensures the competency of sprinkler companies that operate in Idaho. Company owners must meet minimum qualifications and testing to be licensed. Fire protection sprinkler fitters can choose to be licensed by meeting minimum qualifications and testing.

Fire Prevention Sprinkler Contractors – 43

Fire Prevention Sprinkler Fitters – 43

Fire Prevention Sprinkler Plans Reviewed – 327

Fire Prevention Sprinkler Inspections - 442

Idaho Code
39-2603

Fireworks Wholesale or Import License

This rule sets the standards for the issuance of fireworks wholesale and import licenses.

Fireworks Wholesalers/Retailers - 25

Idaho Fire Incident Reporting System

Ruby Andridge
Program Coordinator



The Idaho Fire Incident Reporting System (IFIRS) oversees the collection of incidents from organized fire departments using the National Incident Reporting System (NFIRS) standard. NFIRS is a tool departments may use to identify needs for manpower, trucks, stations, inspections, public education, training, etc. With our state population jumping 28.5 percent during the last decade, departments are using numerous methods, including automated reporting, to provide the services that an increasing population demands. In our pursuit to assist and encourage participation (many times participation is tied to grant monies), we purchased software to assist the smaller department. Software, handbooks, training, and occasionally computers, are provided to those who choose to participate in NFIRS 5.0. Reporting departments increased to 60 percent in 2000. Of those, 58 percent are automated and half of those are using NFIRS version 5.0.

The new NFIRS, version 5.0, and the earlier version 4.1 are not compatible with all data fields, so there have been several problems in creating comparable data for this report. The statistics shown here have been derived from several software packages in two versions of NFIRS and all have been converted through the USFA software to give some continuity to the data. There are many more *blank*, *unknown* and *conversion only* fields resulting from the converted data. Discrepancies are being identified in how data fields relate from module to module and software to software and what the conversion data really illustrates. The numbers shown may vary and are presented to suggest a trend in the various activities of fire departments and how it relates to the activities of the citizens of Idaho.

A small number of departments were unable to submit usable data for the year 2000 due to manpower, data submission, conversion, and/or compatibility problems. There is a slight increase in total incidents and the dollar loss figure is in excess of \$36 million, an all time high.

While wildland fires raged on in Idaho during 2000, most wildland fires will be reflected in this report only when organized fire departments were enlisted to save structures, lives and provide mutual aid to the Bureau of Land Management, Department of Lands, Department of Forestry and other agencies having jurisdiction over wildlands in the state. Local departments provided mutual aid or automatic aid over 1,300 times during 2000.

I would like to thank all who made an effort to complete and submit their data in a format that could be imported to our system. I know that the increased demands on departments has been a strain and some have had to set priorities which did not include reporting. The following counties represent 100 percent participation (all departments reporting): *Bear Lake, Butte, Franklin, Gooding, Jerome, Madison, Minidoka, Payette, and Teton*. Thank you all for your support. May we all continue to serve our communities and "Fight Fires with Facts!" Special thanks to the Department of Insurance team that helped produce this report: Cheryl Charlton, Desktop Publishing Specialist and the Forms Committee: John Davis, Cheryl Karnowski and Shirley Carnahan.

PART II

Fire Statistics

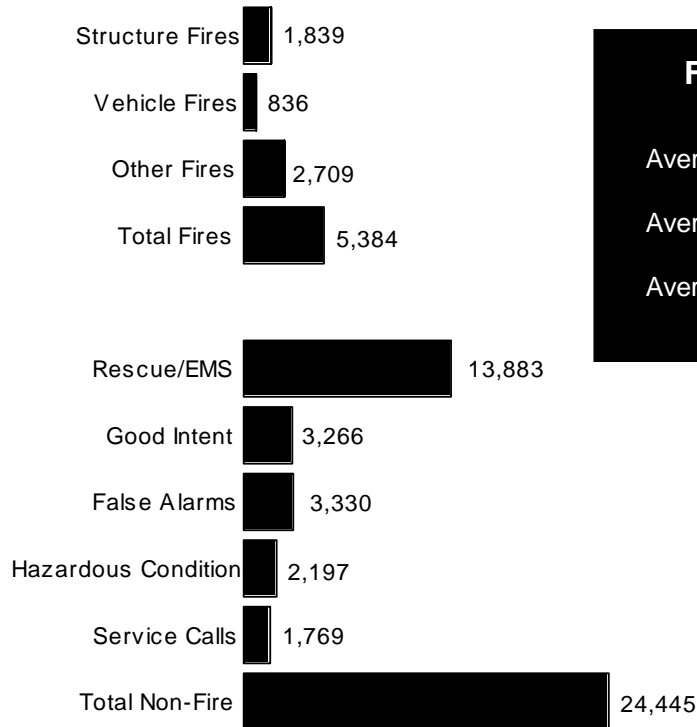
Fire in Idaho 2000 summarizes the tragic effects that fire has on the citizens of Idaho. This report represents more than just numbers. It represents the pain and suffering experienced by the victims of fire through loss of life, property, and jobs, and the loss to the communities. The intention is to raise the awareness of the impact that fire has in order to determine how we can stop fires



Total Impact

2000 State Incident Summary

29,829 Total Responses



Totals include 1,363 mutual aid given



Courtesy of
Rick Reed, Idaho Falls

Firefighter Statistics Per Incident

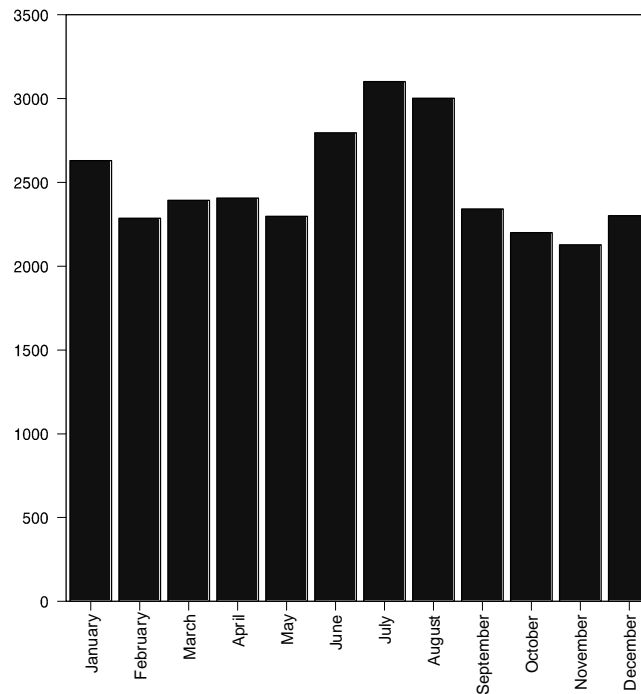
Average Number of Apparatus	5
Average Number of Personnel	8
Average Response Time	7 minutes

Total Incidents by Type

Types	Total
Structure Fires	1,768
Mobile Structures	71
Vehicle Fires	836
Wildland Fires	1,752
Rubbish Fires	618
Outside Fires with Value	95
Crop Fires	244
Overpressure	131
Rescue/EMS	13,883
Haz Condition	2,197
Service Calls	1,405
Good Intent	3,266
False Alarms	3,330
Severe Weather	17
Other	216
Grand Total	29,829

Total Impact

Total Incidents by Month



Top Calls

Top Calls by Order of Frequency

EMS (conversion only)	37%
EMS call (excluding vehicle accident with injury)	11.1%
System malfunction	4.2%
Rescue	4%
Outside vegetation fires	3.8%

Incidents Leading \$Loss Figures

Structure fires (conversion only)	2.7%
Building fires	1.0%
Vehicle fires	1.8%
Natural vegetation fires	3.8%
Crop fires	0.6%

Incidents Leading Civilian Deaths/ Injuries (fire only)

Building fires	4%
Motor home, camper, recreational vehicle	1.8%
Mobile home fires	0.2%
Fire (other)	0.4%
Passenger vehicle fire	0.8%

Incidents leading to Fire Service Injuries (all incidents)

Structure fires (conversion only)	2.8%
Building fires	1.0%
Natural vegetation fires	3.8%
Extrication, rescue, other	2.1%
Mobile property (vehicle) fires, other	1.8%

Structures

Structure Fires (1,839)



1,222 Residential Fires

(Single family dwellings, apartments, mobile homes, hotels, motels)



76 Industrial, Manufacturing Fires

(Basic industry, manufacturing, agriculture)



44 Institutional/Educational Fires

(Nursing homes, daycare centers, hospitals, prisons, mental institutions, schools, colleges, universities, academies)



359 Other Building Fires

(storage, residential garages, vacant buildings, unknown, outdoor)



59 Public Assembly Fires

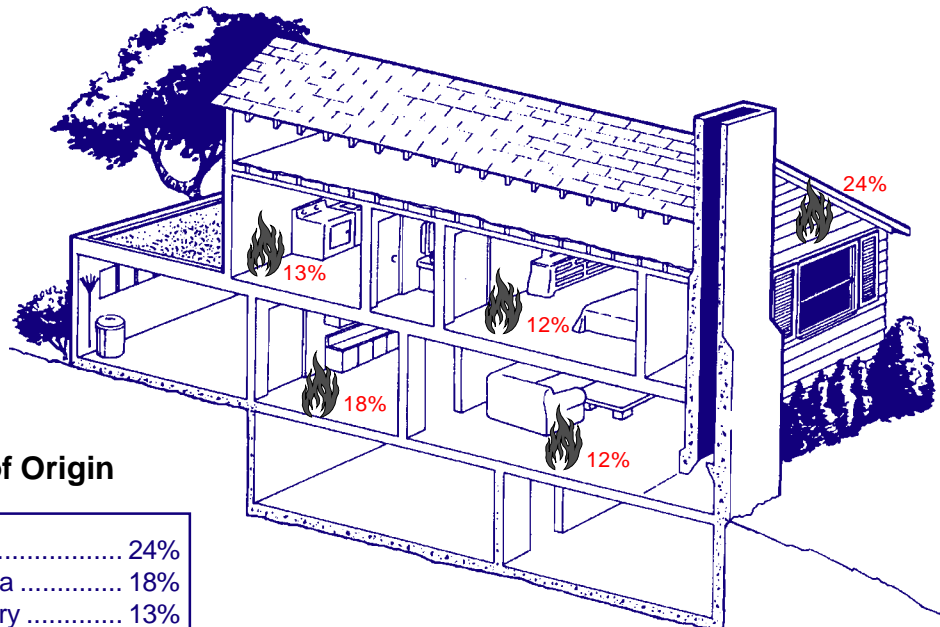
(Churches, amusement centers, stadiums, libraries, restaurants, theaters)



79 Store/Office Fires

(Food markets, department stores, specialty shops, service stations, offices)

Residential by Area



Top 5 by Area of Origin

- | | |
|--------------------------------|-----|
| 1. Structural Areas | 24% |
| 2. Kitchen/Cooking Area | 18% |
| 3. Service Areas/Laundry | 13% |
| 4. Bedroom | 12% |
| 5. Living Room | 12% |

Casualties

Firefighter Injuries

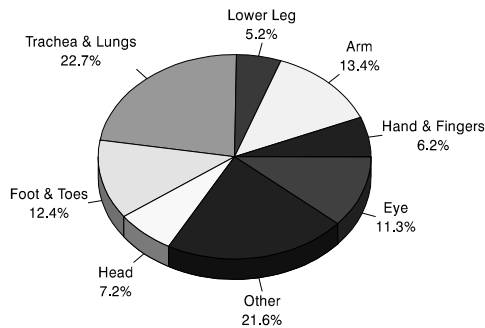
0 Deaths
97 Injuries



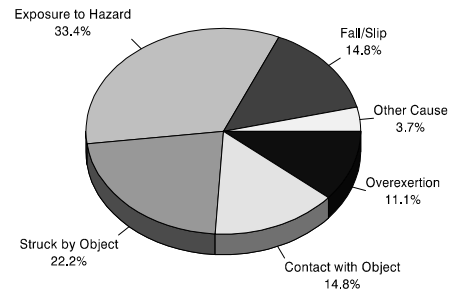
Where Injuries Occur
by Time of Day

	Midnight-8:00AM	8:00AM-Noon	Noon-4:00PM	4:00PM-8:00PM	8:00PM-Midnight
Restaurant	0	0	0	0	7
Family Home	7	0	0	13	6
Agriculture	0	0	0	0	6
Storage	0	7	6	0	0
Outside	0	5	29	0	5
Unknown	0	0	0	6	0

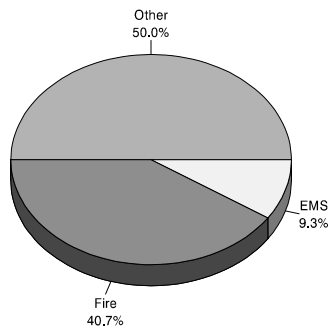
Part of Body Injured



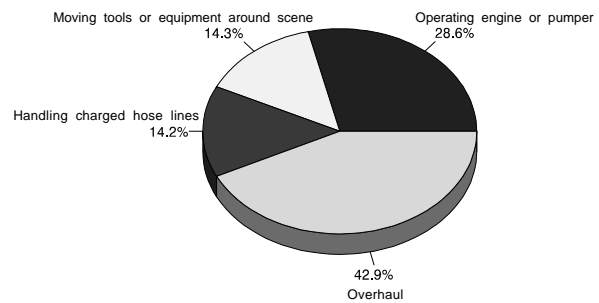
Causes of Firefighter Injury



Firefighter Injuries by Type



Activity at Time of Injury



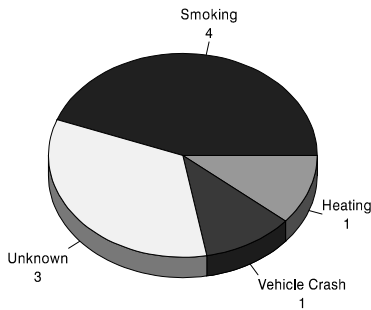
Casualties

Civilian Injuries and Fatalities

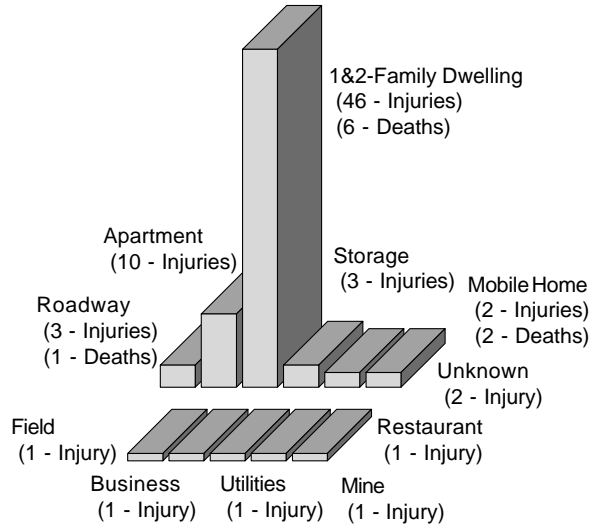
9 Deaths
71 Injuries



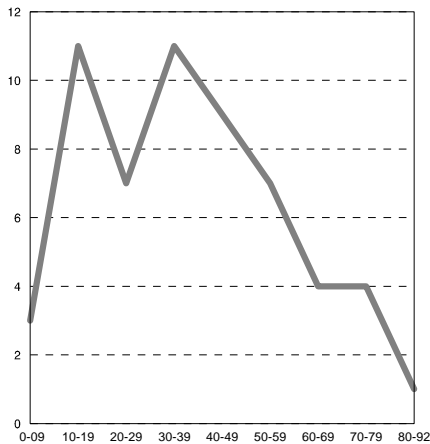
Fatal Fire Causes



By Occupancy

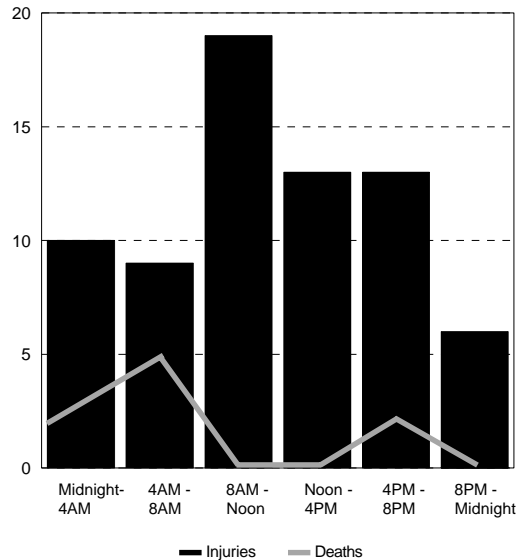


Age Groups



Injuries - 41 Males, 7 Females, 23 Unknown
Fatalities - 7 Males, 2 Females

Time of Day

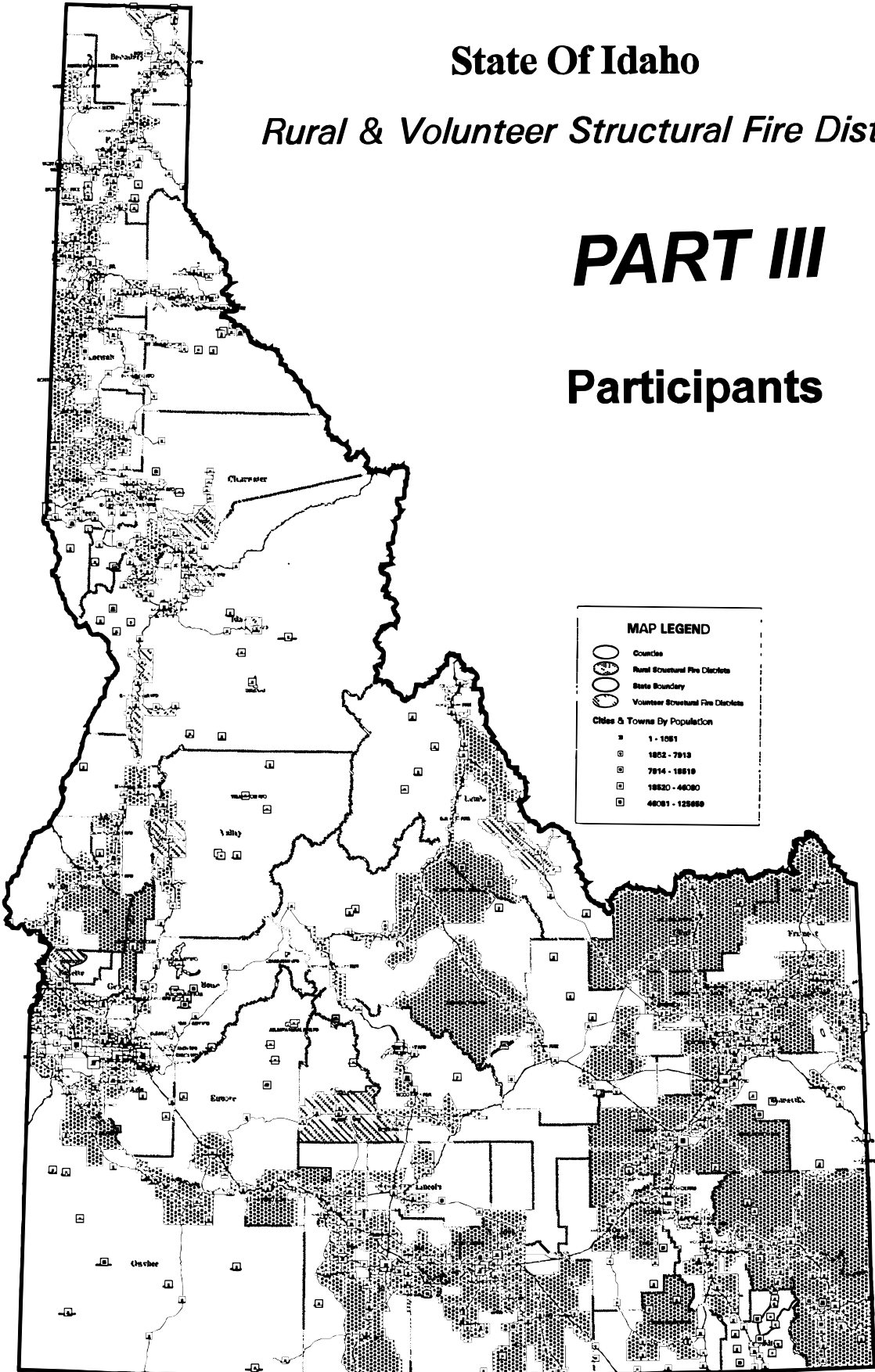


State Of Idaho

Rural & Volunteer Structural Fire Districts

PART III

Participants



FDID #	Jurisdiction	Fires	Rescue/ EMS	Hazard Calls	Service Calls	Good Intent	False Alarms	Severe Weather	Other Calls	Total Calls	Total \$ Loss	Injuries		Deaths	
												Civilian	Firefighter	Civilian	Firefighter
01100	Boise Fire	556	49	287	177	452	1118	0	71	2710	2,488,666	18	14	2	
01236	North Ada Cty Fire/Rescue	57	0	20	8	25	42	0	0	152	29,100				
01246	Kuna Fire	Not reporting													
01313	Meridian City Fire	59	1055	40	27	106	139	0	1	1427	239,150		3		
01334	Meridian Rural Fire	154	1143	50	26	163	138	0	1	1675	519,753		16		
01342	Star Fire District	84	24	3	18	53	55	1	5	243	280,765	3			
01344	Eagle FPD	84	27	14	34	66	92	0	18	335	182,830	1			
01	ADA COUNTY	994	2298	414	290	865	1584	1	96	6542	3,740,264				
03320	Council Vol Fire Dept	10	0	10	14	0	0	0	0	34	52,000				
03334	Indian Valley Rural FD	Not Reporting								0					
03340	Meadows Valley Rural	Not Reporting													
03	ADAMS COUNTY	10	0	10	14	0	0	0	0	34	52,000				
05101	Pocatello City Fire	162	1633	85	76	100	101	0	9	2166	2,334,660	9	5		
05207	Chubbuck Fire Dept	30	1	14	3	4	7	0	1	60	73,000	1			
05322	Arimo Fire Dept	Not Reporting													
05323	Chubbuck Rural Fire Dept	2	0	0	0	0	0	0	0	2	10,000				
05326	Downey Fire Dept	Not Reporting													
05328	Inkom Fire Dept	20	0	1	0	2	0	0	0	23	51,350				
05329	Lava Hot Springs FD	Not Reporting													
05331	Pocatello Valley Fire PD	Not Reporting													
05340	McCammon Fire Dept	Not Reporting													
05	BANNOCK COUNTY	214	1634	100	79	106	108	0	10	2251	2,469,010				
07301	Montpelier City Fire	13	0	3	1	1	2	0	1	21	95,000				
07334	Paris Fire Dept	5	0	0	0	0	0	0	0	5	75,000				
07335	Dingle Fire Dept	9	0	0	1	1	0	0	0	11	28,200				
07336	Ovid Fire Dept	17	0	0	1	0	0	0	0	18	200,500				
07337	Georgetown Fire Dept	7	0	0	1	0	0	0	0	8	158,700				
07338	Pegram Fire Dept	4	0	0	0	1	0	0	0	5	0				
07339	Geneva Fire Dept	2	0	0	0	0	0	0	0	2	0				
07341	Fish Haven Fire Dept	0	0	0	1	0	0	0	0	1	0				
07342	St. Charles Fire Dept	4	0	0	1	0	0	0	0	5	20,000				
07343	Bennington Fire Dept	31	0	4	7	1	0	0	0	43	227,150				
07344	Noonan Fire Dept	3	0	0	0	0	0	0	0	3	50				
07	BEAR LAKE COUNTY	95	0	7	13	4	2	0	1	122	804,600				
09302	Plummer-Gateway FD	35	3	25	1	7	6	0	1	78	348,000				
09325	St. Maries Fire Dept	Not reporting													
09330	Fernwood Rural FPD	5	0	0	0	0	0	0	0	5	0				
09335	Tensed Fire District	Not reporting													
09366	St. Maries Rural FPD	32	5	10	2	16	8	0	0	73	331,650	1			
09	BENEWAH COUNTY	72	8	35	3	23	14	0	1	156	679,650				
11101	Blackfoot Fire Dept	153	3	29	40	66	31	0	24	346	495,400				
11303	Aberdeen Fire Dept	15	0	0	2	0	0	0	0	17	0				
11334	Fort Hall Fire Dept	Not reporting													
11355	Shelley FPD	Not reporting													
11357	Firth FPD	57	19	6	1	15	3	0	0	101	244,360		7		
11	BINGHAM COUNTY	225	22	35	43	81	34	0	24	464	739,760				

13203	Ketchum Fire Dept	41	504	75	18	65	116	0	7	826	205,550				
13301	Hailey City Fire Dept	31	122	33	10	14	19	0	2	231	36,850				
13302	Bellevue Fire Dept	Not reporting													
13306	Sun Valley Fire Dept	10	16	61	16	11	24	0	15	153	8,025,150				
13334	Wood River Fire PD	37	1	7	2	12	5	0	3	67	529,950	3	6		
13354	Carey Rural Fire PD														
13	BLAINE COUNTY	119	643	176	46	102	164	0	27	1,277	8,797,500				
15301	Placerville Fire Dept	Not reporting													
15311	Garden Valley Rural FD	4	0	0	0	0	0	0	0	4	0				
15313	Robie Creek Fire Dept	2	0	0	2	2	0	0	0	6	0				
15315	Horseshoe Bend FD	4	1	1	1	0	0	0	0	7	20,300				
15320	Grandjean Vol FD	Not reporting													
15324	Idaho City Fire Dept	6	0	0	0	0		0	0	6	25,000				
15330	Clear Creek FD	Not reporting													
15335	Valley of the Pines	Not reporting													
15340	Wilderness Ranch VFD	4	3	0	0	0	2	0	0	9	225,000				
15345	Horseshoe Bend Rural FD	7	3	1	0	1	0	0	0	12	0				
15	BOISE COUNTY	27	7	2	3	3	2	0	0	44	270,300				
17201	Sandpoint Fire Dept	45	339	16	16	23	32	0	2	473	105,550				
17303	Priest River City FD	12	0	1	0	0	2	0	1	16	6,150				
17314	Clark Fork Fire Dept	Not reporting													
17316	East Hope Fire Dept	Not reporting													
17319	West Priest Lake FD	12	0	0	0	0	0	0	0	12	20,100				
17333	Northside FPD	50	0	13	34	19	4	0	11	131	343,000	1			
17335	Westside Fire District	10	18	6	0	9	0	1	0	44	4,000				
17337	West Pend Oreille Fire Dist	19	6	3	2	0	1	0	1	32	143,200				
17341	Sagle Valley Fire District *	2	10	0	0	1	0	0	0	13	0				
17344	Coolin-Cavanaugh Bay FPD	Not reporting													
17349	Schweitzer Fire District	Not reporting													
17	BONNER COUNTY	150	373	39	52	52	39	1	15	721	622,000				
19101	Idaho Falls Fire Dept	295	6	129	43	128	136	0	6	743	1,650,927	3	6		
19315	Ammon Fire Dept	Not reporting													
19317	Ucon Fire Dept	Not reporting													
19340	Greater Swan Valley	Not reporting													
19	BONNEVILLE COUNTY	295	6	129	43	128	136	0	6	743	1,650,927				
21301	Bonnors Ferry City FD	10	2	14	22	18	2	0	1	69	24,700				
21315	Moyie Springs FD	Not reporting													
21333	Curley Creek FPD	13	0	2	3	2	0	0	0	20	50,000				
21341	North Bench Fire District	21	0	20	0	13	13	0	1	68	209,000				
21344	Hall Mtn Vol FD	1	0	0	2	0	0	0	1	4	0				
21346	Naples Vol FPD	32	0	3	15	12	1	0	1	64	5,000				
21348	Paradise Valley FD	Not reporting													
21	BOUNDARY COUNTY	77	2	39	42	45	16	0	4	225	288,700				
23316	Arco Fire Dept	8	15	1	0	2	2	0	0	28	125				
23341	Lost River Fire PD	27	0	0	1	2	0	0	0	30	22,200				
23	BUTTE COUNTY	35	15	1	1	4	2	0	0	58	22,325				
25301	Fairfield Fire Dept	Not reporting													
25340	West Magic Fire Dist	Not reporting													
25	CAMAS COUNTY	0	0	0	0	0	0	0	0	0	0				

27101	Nampa City Fire Dept	290	2,535	79	214	282	236	1	11	3,648	1,333,860	3		
27134	Nampa Rural Fire PD	0	46	0	2	4	2	0	1	55	0			
27211	Caldwell Fire Dept *	25	292	14	12	47	34	0	3	427	136,872			
27246	Caldwell Rural Fire Dept *	9	59	1	3	10	6	0	1	89	183,000	1		
27307	Wilder FPD	Not reporting												
27309	Notus City Fire Dept	Not reporting												
27336	Middleton Rural Fire Dept *	0	0	0	0	1	0	0	0	1	0			
27338	Parma Rural FPD	65	18	7	2	5	10	0	0	107	154,000			
27339	Upper Deer Flat Fire PD	10	0	1	0	1	0	0	0	12	10,750			
27344	Melba Rural Fire PD	37	1	3	1	5	2	0	0	49	269,830			
27	CANYON COUNTY	436	2,951	105	234	355	290	1	16	4,388	2,088,312			
29301	Soda Springs City FD	9	0	1	1	2	1	0	1	15	150,000			
29305	Caribou County FD	Not reporting												
29306	Bancroft Fire Dept	Not reporting												
29309	Grace Fire Dept	Not reporting												
29	CARIBOU COUNTY	9	0	1	1	2	1	0	1	15	150,000			
31201	Burley/N Cassia Fire Dept	85	3	12	5	29	32	0	1	167	527,950	1		1
31334	Declo Fire PD	Not reporting								0				
31338	Raft River Fire PD	4	0	0	0	0	0	0	0	4	4,000			
31340	Oakley Fire PD	15	0	1	2	1	0	0	0	19	38,025			
31342	Albion Fire PD	Not reporting												
31	CASSIA COUNTY	104	3	13	7	30	32	0	1	190	569,975			
33329	Dubois City Fire Dept	Not reporting												
33	CLARK COUNTY	0	0	0	0	0	0	0	0	0	0			
35301	Elk River Fire Dept	1	0	0	0	0	0	0	0	1	0			
35303	Orofino Fire Dept	37	24	8	1	5	2	0	0	77	56,925	1		
35305	Twin Ridge Fire District	0	0	0	0	2	0	0	0	2	0			
35309	Pierce Vol Fire Dept	2	1	0	0	0	0	0	0	3	0			1
35312	Weippe Fire Dept	Not reporting												
35315	Headquarters Fire Dept	Not reporting												
35338	Sunnyside Rural Fire PD	4	0	0	0	0	0	0	0	4	20,000			
35	CLEARWATER COUNTY	44	25	8	1	7	2	0	0	87	76,925			
37301	Sawtooth Valley Rural FPD	4	7	1	0	1	0	0	0	13	3,000			
37302	Challis City Fire Dept	4	0	0	0	1	0	0	0	5	133,000	2		
37305	Mackay Fire Dept	3	0	0	0	1	0	0	0	4	10,000			
37315	Clayton Fire Dept	Not reporting												
37334	North Custer Fire PD	12	1	2	0	4	0	0	7	26	4,000		16	
37354	South Custer Rural FPD	Not reporting												
37	CUSTER COUNTY	23	8	3	0	7	0	0	7	48	150,000			
39301	Mtn Home City FD	33	2	9	1	10	12	0	0	67	2,927,625			
39303	Glenns Ferry FD	Not reporting												
39334	Mtn Home Rural Fire PD	37	2	3	2	8	2	0	1	55	102,300	1		
39336	King Hill Rural	Not reporting												
39338	Atlanta Rural Fire Dept	Not reporting												
39	ELMORE COUNTY	70	4	12	3	18	14	0	1	122	3,029,925			

41301	Preston City Fire Dept	67	9	13	2	22	1	0	1	115	287,865	5		
41	FRANKLIN COUNTY	67	9	13	2	22	1	0	1	115	287,865			
43312	St Anthony Fire Dept	13	3	3	1	3	5	0	1	29	1,500			
43334	Island Park Fire District	8	1	1	1	5	2	0	0	18	0			
43336	North Fremont FPD	18	0	1	0	1	5	1	0	26	155,100			
43338	S Fremont Fire PD	27	0	2	1	23	1	0	0	54	111,610			
43	FREMONT COUNTY	66	4	7	3	32	13	1	1	127	268,210			
45301	Emmett City Fire Dept	16	0	1	0	5	6	0	0	28	7,775			
45334	Gem County FPD #1	Not reporting												
45339	Gem County FPD #2	Not reporting												
45	GEM COUNTY	16	0	1	0	5	6	0	0	28	7,775			
47301	Gooding City/Rural FPD	63	28	12	6	32	13	0	1	155	227,515			
47303	Wendell City Fire Dept	9	3	3	3	3	0	0	0	21	19,600			
47323	Hagerman Fire Dept	0	20	0	0	0	0	0	1	21	0			
47335	Wendell Fire PD	59	46	2	2	29	1	0	0	139	362,865			
47341	Bliss Rural Fire Dept	16	17	1	0	2	2	0	0	38	37,200			
47	GOODING COUNTY	147	114	18	11	66	16	0	2	374	647,180			
49308	Grangeville Fire Dept*	1	0	0	0	0	0	0	0	1	30,000			
49310	Cottonwood City	Not reporting												
49311	Whitebird Fire Dept	Not reporting												
49316	Elk City Fire Dept	Not reporting												
49327	Ferdinand City/Rural *	1	0	0	0	0	0	0	0	1	100,000			
49329	Sitles Fire Dept	Not reporting												
49330	Kooskia FD	13	0	1	4	1	1	0	1	21	274,845			
49334	Grangeville Rural Fire Dept *	1	0	0	0	0	0	0	0	1	250,000			
49335	Cottonwood Rural FPD	Not reporting												
49336	Ridgerunners Vol FD	Not reporting												
49338	Salmon River Fire PD	9	0	2	0	2	0	0	0	13	0			
49350	Riggins Fire PD	Not reporting												
49	IDAHO COUNTY	25	0	3	4	3	1	0	1	37	654,845			
51301	Rigby Fire Dept	Not reporting												
51310	Menan Fire Dept	Not reporting												
51312	Mud Lake Fire Dept	Not reporting												
51314	Roberts Fire Dept	Not reporting												
51334	Jefferson Central FPD	Not reporting												
51337	Hamer Fire PD	Not reporting												
51340	West Jefferson Fire PD	Not reporting												
51	JEFFERSON COUNTY	0	0	0	0	0	0	0	0	0	0			
53201	Jerome City Fire Dept	44	357	42	31	40	32	0	11	557	135,935			2
53333	Jerome Rural Fire Dept	86	11	29	16	19	7	0	4	172	150,000		6	
53353	First Segregation/Eden FD	55	5	1	11	19	0	0	0	91	82,550			1
53	JEROME COUNTY	185	373	72	58	78	39	0	15	820	368,485			

55201	Coeur d'Alene Fire Dept	185	2,832	105	78	160	164	0	35	3,559	668,963	5	1
55209	Kootenai County Haz Mat #1	0	0	2	19	0	0	0	0	21	0		
55234	Kootenai County FD #1	138	273	49	90	219	39	2	4	814	188,750		
55336	Worley Fire Dept	22	78	13	12	44	12	1	0	182	519,000	1	
55338	Spirit Lake Fire PD	37	163	10	2	5	20	0	2	239	146,000	1	
55340	Post Falls Fire PD *	30	189	12	5	24	7	0	2	269	44,410		
55342	Hayden Lake Fire Dept	31	266	10	5	38	11	0	3	364	182,001		
55344	Rathdrum Rural FPD *	35	195	12	28	25	9	2	2	308	38,000		
55346	Hauser Lake Fire Dept	27	89	3	6	10	11	1	1	148	121,100		
55352	Timberlake FPD	62	193	9	16	33	8	1	11	333	35,500		
55354	Mica-Kd Island Fire PD	Not Reporting											
55360	East Side Fire PD	8	11	6	6	5	3	2	0	41	60,000		
55	KOOTENAI COUNTY	575	4,289	231	267	563	284	9	60	6,278	2,003,724		
57301	Moscow City Fire PD	57	0	6	3	7	84	1	1	159	190,700		
57338	Genesee Rural/Comm FD	Not Reporting											
57304	Troy Vol Fire Dept	Not Reporting											
57306	Kendrick Vol Fire Dept	Not Reporting											
57307	Juliaetta Vol Fire Dept	1	0	0	0	0	0	0	0	1	0		
57309	Bovill Vol Fire Dept	7	0	0	0	0	0	0	0	7	16,700		
57334	Moscow Rural Fire Dept	16	1	3	0	0	1	0	0	21	2,400		
57336	Potlatch Rural Fire PD	Not Reporting											
57340	Troy Rural FPD	Not Reporting											
57342	Deary Fire PD	10	14	0	0	0	1	0	1	26	121,500		
57	LATAH COUNTY	91	15	9	3	7	86	1	2	214	331,300		
59301	Salmon Fire Dept	Not Reporting											
59304	Gibbonsville Vol Fire Dept	Not Reporting											
59310	Elk Bend Fire PD	Not Reporting											
59315	Leadore Fire Dept	10	3	0	0	3	0	0	0	16	100,000		
59333	North Fork Fire PD	Not Reporting											
59	LEMHI COUNTY	10	3	0	0	3	0	0	0	16	100,000		
61304	Craigmont Fire Dept	Not Reporting											
61306	Reubens Fire Dept	Not Reporting											
61308	Winchester Fire Dept	Not Reporting											
61310	Nezperce Fire Dept	Not Reporting											
61334	Kamiah City/Rural FPD	14	0	1	0	0	1	0	1	17	149,500		
61	LEWIS COUNTY	14	0	1	0	0	1	0	1	17	149,500		
63306	Dietrich Rural Fire Dept	8	0	0	0	2	1	0	0	11	0		
63308	Richfield Fire District	Not Reporting											
63333	Wood River Fire Dist #1	24	7	8	1	3	5	0	0	48	154,685		
63	LINCOLN COUNTY	32	7	8	1	5	6	0	0	59	154,685		
65202	Rexburg City Fire Dept	25	17	15	10	24	16	0	3	110	22,700	1	
65234	Madison Fire PD	74	47	12	7	49	3	0	1	193	900,850		5
65	MADISON COUNTY	99	64	27	17	73	19	0	4	303	923,550		
67301	Rupert City Fire Dept	17	7	9	2	6	9	1	1	52	48,300		
67334	West End Fire PD	48	13	14	3	12	1	0	0	91	43,200		
67335	Northside/Rupert	6	1	3	0	0	1	0	1	12	165,635		
67336	Heyburn Fire PD	49	2	2	2	8	0	0	1	64	168,800		
67337	East End Fire PD	59	1	6	0	8	5	0	0	79	102,315		
67	MINIDOKA COUNTY	179	24	34	7	34	16	1	3	298	528,250		

69201	Lewiston Fire Dept	108	1	48	20	72	114	0	12	375	403,441	1	7		
69306	Lapwai Fire Dept	Not Reporting													
69309	Evergreen Vol FD	Not Reporting													
69311	Culdesac Fire Dept	Not Reporting													
69333	Big Canyon Fire District	Not Reporting													
69	NEZ PERCE COUNTY	108	1	48	20	72	114	0	12	375	403,441				
71301	Malad Fire Dept	Not Reporting													
71	ONEIDA COUNTY	0	0	0	0	0	0	0	0	0	0				
73334	Homedale FPD	1	0	0	0	0	0	0	0	1	2,100				
73336	Marsing FPD	1	0	0	0	0	0	0	0	1	0				
73338	Grand View Fire Dept	15	0	0	0	0	1	0	0	16	244,310				
73340	Bruneau Fire Dept	Not reporting													
73342	Murphy-Reynolds-Wilson FPD	8	0	1	0	1	0	0	1	11	76,000				
73	OWYHEE COUNTY	25	0	1	0	1	1	0	1	29	322,410				1
75301	Payette City Fire Dept	41	1	11	1	13	8	0	0	75	241,700				
75302	Fruitland Fire Dept	34	1	1	6	5	3	0	0	50	23,681				
75303	New Plymouth Fire Dept	Not reporting													
75334	Payette Rural FD	62	6	2	2	12	0	0	1	85	103,825				
75	PAYETTE COUNTY	137	8	14	9	30	11	0	1	210	369,206				
77302	American Falls Fire Dept	Not reporting													
77330	Power County Rural	Not reporting													
77	POWER COUNTY	0	0	0	0	0	0	0	0	0	0				
79234	Shoshone Fire PD #2	84	428	30	35	116	36	0	9	738	132,559	4	6		
79236	Shoshone Fire PD #1	35	356	20	11	17	9	0	1	449	196,400	2			
79305	Prichard/Murray Fire Dept	2	0	0	0	0	0	0	0	2	3,500				
79310	St Joe Valley Fire PD	Not reporting													
79316	Mullan/Shoshone Fire PD #3	Not reporting													
79	SHOSHONE COUNTY	121	784	50	46	133	45	0	10	1,189	332,459				
81334	Teton County FPD	31	2	2	4	14	5	0	2	60	71,500	1			
81	TETON COUNTY	31	2	2	4	14	5	0	2	60	71,500				
83101	Twin Falls Fire Dept	207	101	472	57	199	164	0	12	1,212	1,079,456	1			
83207	Buhl Fire Dept	79	8	25	3	18	13	0	3	149	365,200				
83305	Kimberly City Fire Dept	5	1	2	2	10	5	0	1	26	32,000				
83309	Hansen Fire Dept	Not reporting													
83311	Filer Fire/Rescue	3	1	2	1	2	12	0	1	22	0				
83334	Rock Creek Rural FD	40	8	3	3	31	7	0	2	94	389,500				
83338	Filer Fire/Rescue Rural	27	31	4	3	9	5	0	0	79	80,000				
83340	Castleford Fire District	Not reporting													
83349	Salmon Track Vol Fire PD	Not reporting													
83	TWIN FALLS COUNTY	361	150	508	69	269	206	0	19	1,582	1,946,156				

85302	Cascade City Fire Dept	9	1	2	6	6	3	0	0	27	0				
85304	Donnelly Vol Fire Dept	Not reporting													
85334	Cascade Rural Fire Dept	Not reporting													
85339	McCall Fire PD	25	32	13	2	14	15	3	2	106	103,425				
85340	High Valley FP Association	Not reporting													
85359	Stibnite Fire Dept	Not reporting													
85	VALLEY COUNTY	34	33	15	8	20	18	3	2	133	103,425				
87301	Weiser City Fire Dept	41	0	5	0	2	2	0	0	50	355,400				
87330	Cambridge Vol Fire Dept	Not reporting													
87334	Weiser Rural Fire Dept	30	4	2	1	3	5	0	0	45	21,000				
87336	Midvale Fire PD	9	0	0	0	0	0	0	0	9	475,400				
87	WASHINGTON COUNTY	80	4	7	1	5	7	0	0	104	851,800				
	GRAND TOTALS	5,402	13,883	2,198	1,405	3,267	3,335	18	347	29,855	37,027,939	71	97	9	0
	* Incomplete Totals														

Idaho State Fire Marshal
700 West State Street
P. O. Box 83720
Boise, Idaho 83720-0043



Cover photograph, Anderson Lumber Fire, Pocatello, Idaho, July 16, 2000,
courtesy of Doug Lindley of the Idaho State Journal.

Costs associated with this publication are available at the office
of the Idaho State Fire Marshal.