



Fire in Idaho

*2006 State Fire Marshal
Annual Report*

Governors
Dirk Kempthorne
James E. Risch

Department of Insurance
Gary L. Smith, Director
Shad Priest, Acting Director

Idaho State Fire Marshal
Mark Larson



Mission Statement

The State Fire Marshal's Office participates in and coordinates an integrated statewide system designed to protect human life from fire and explosions through fire prevention and the investigation of fires. The program involves fire prevention activities, arson investigations, and the operation of various statistical systems, including the Idaho Fire Incident Reporting System.

State of Idaho
DEPARTMENT OF INSURANCE

C.L. "BUTCH" OTTER
Governor

700 West State Street, 3rd Floor
P.O. Box 83720
Boise, Idaho 83720-0043
Phone (208)334-4370
FAX # (208)334-4375

WILLIAM W. DEAL
Director

MARK LARSON
State Fire Marshal

July 1, 2007

Honorable C.L. "Butch Otter
Governor, State of Idaho
Statehouse
Boise, ID 83720

Dear Governor Otter:

The 2006 edition of the annual report from the State Fire Marshal represents the twenty-fourth time this office has remarked on "Fire in Idaho." The facts presented here are based on information submitted to us by the fire jurisdictions across this great state.



Idaho is served by over 5,400 fire professionals whose ranks include more than 1,600 career and more than 3,800 paid-call and volunteer fire fighters. These citizens respond, on the average, to 195 calls for service each day statewide. Despite the very best efforts of code officials, fire prevention officers, and emergency responders, 25 Idahoans perished in fires in 2006. This follows the almost equally tragic year of 2005 in which 23 Idahoans lost their lives in fires.

I offer my thanks to the departments that contributed their time and information for this report and to my staff for their efforts in producing this document.

Respectfully submitted,

A handwritten signature in black ink that reads "Mark Larson". The signature is written in a cursive, flowing style.

Mark Larson
State Fire Marshal

Table of Contents

STATE FIRE MARSHAL DIVISION

Organizational Chart	3
Fire Prevention	4
Licensing	5
Fire Origin and Arson Investigations	6

INCIDENT SUMMARY STATISTICS

Summary of Statistics

Incident Summary	8
Incident Responses by (Month, Day and Hour)	9
Top Ten by Incident Type Categories	10
Five-Year Trends	12

Structure Fires

Fires in Idaho	14
Structure Fires	15
Area of Origin	16
Top 10 Large Dollar Loss Structure Fire Events in Idaho	17
Idaho Structure Fires by Property Use	18
Smoke Detector Performance	20
Automatic Extinguishing Systems	21

Emergency Medical Services (EMS)

EMS Reporting Statistics	22
Patient Data	23

Civilian Fire Casualties

Civilian Casualty Statistics	24
2006 Civilian Fire Fatalities	25

Fire Service Casualties

Fire Service Injuries per 10,000 Population	26
Fire Service Injuries by Incident Type and Severity	27

Wildland Fires

Wildland Fire Trends - Idaho vs. USA	28
--	----

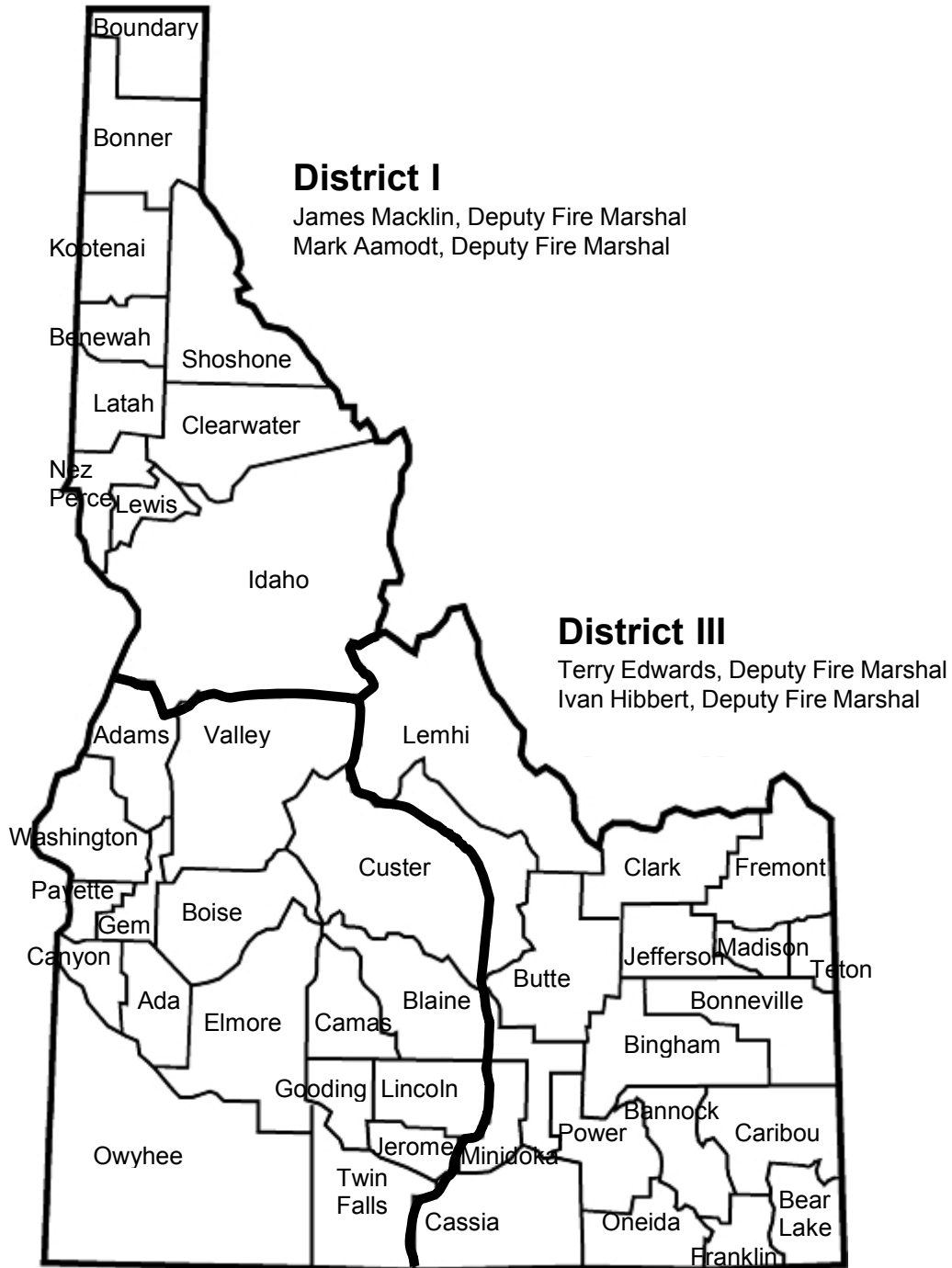
DEPARTMENT LISTINGS

Importance of Data Quality Control	30
Departments NOT Reporting in 2006	31
Reporting Departments	32

Glossary of Terms	40
-------------------------	----



State Fire Marshal Division



District I

James Macklin, Deputy Fire Marshal
Mark Aamodt, Deputy Fire Marshal

District III

Terry Edwards, Deputy Fire Marshal
Ivan Hibbert, Deputy Fire Marshal

District II

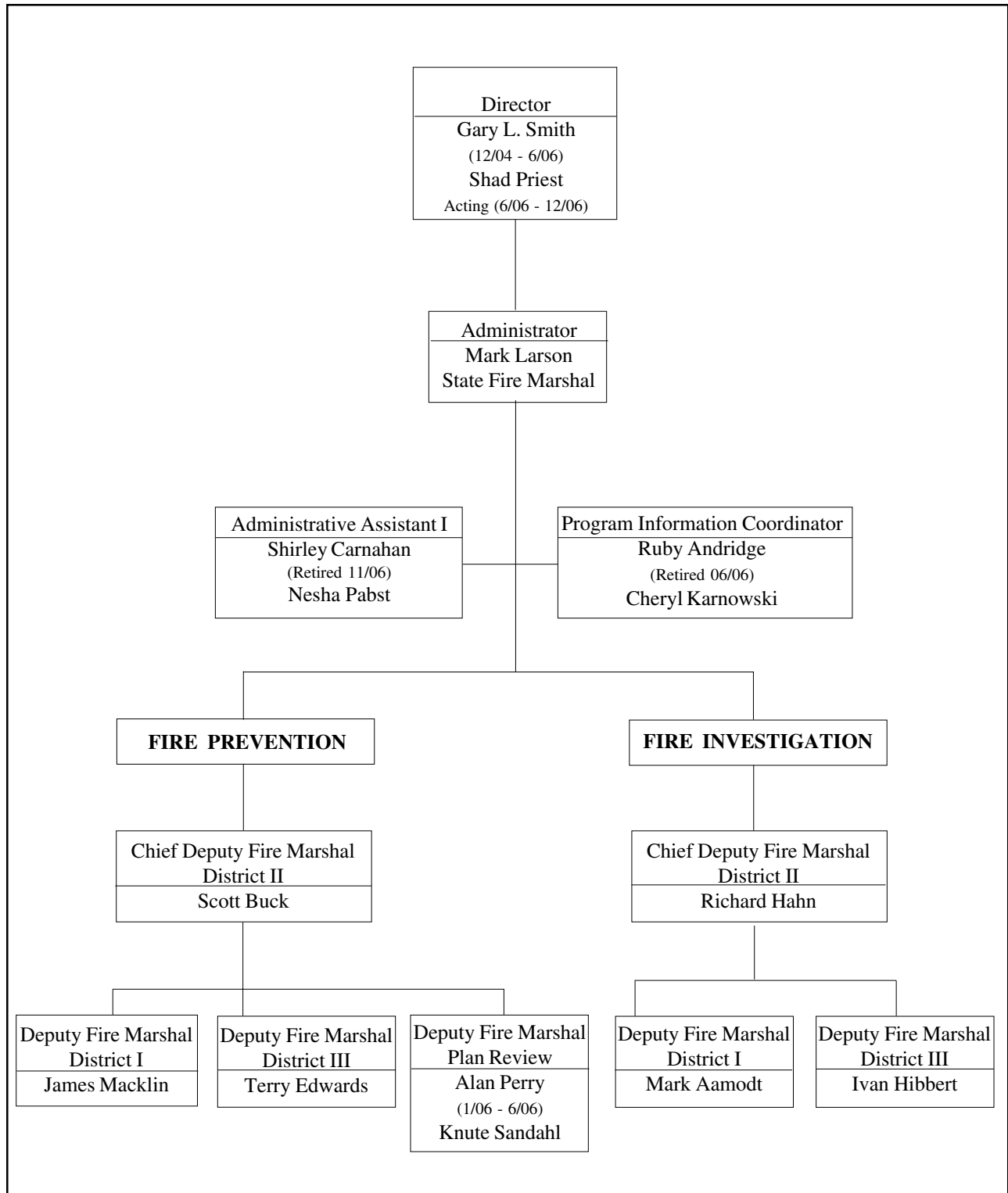
Scott Buck, Chief Deputy Fire Marshal
Richard Hahn, Deputy Fire Marshal
Alan Perry/Knute Sandahl, Deputy Fire Marshal

Boise Office Staff

Mark Larson, State Fire Marshal
Nesha Pabst, Administrative Assistant
Cheryl Karnowski, Program Information Coordinator



State Fire Marshal Organizational Chart



Fire Prevention

Fire prevention deputies provide a statewide program for fire prevention through the inspection of buildings, review of new construction plans, fire cause and origin determination, and fire code training to certify fire inspectors.

Plan reviews are conducted on all state-owned buildings, as required by statute, as well as other structures when requested by the local jurisdictions.

The deputy state fire marshals also provide assistance with fire alarm testing, sprinkler inspections, code interpretation, and other support when requested by the local jurisdictions.

Deputies are responsible for providing training and testing for certification in the application of the state-adopted fire code. This helps to ensure consistency in the interpretation and application of the fire code throughout the state of Idaho.



Boag Fire, St. Maries, Idaho, taken by Mark Aamodt, Deputy Fire Marshal, Office of the State Fire Marshal

District I

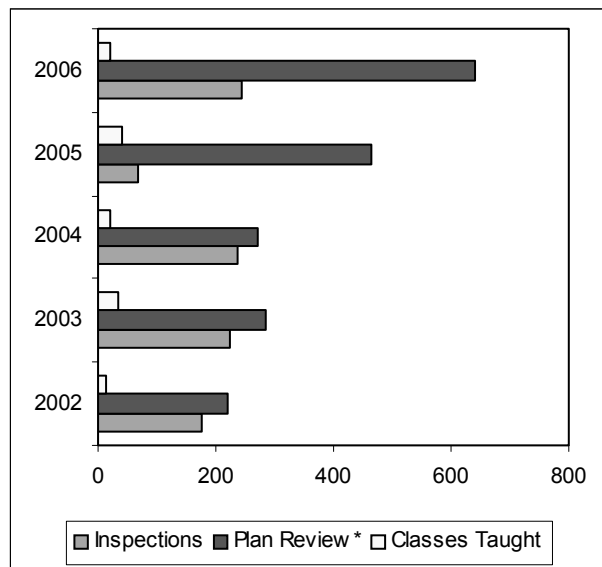
Jim Macklin
(home/office)
Lewiston, ID 83501
208-799-5024

District II

Scott Buck
700 W. State Street, 3rd Floor
Boise, ID 83720-0043
208-334-4370

District III

Terry Edwards
1820 E 17th St, Suite 220
Idaho Falls, ID 83404
208-525-7022

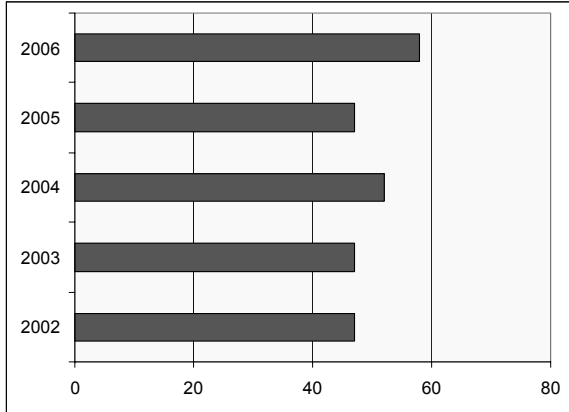


*In 2005 and 2006 "Plan Review" includes fire sprinkler plans.



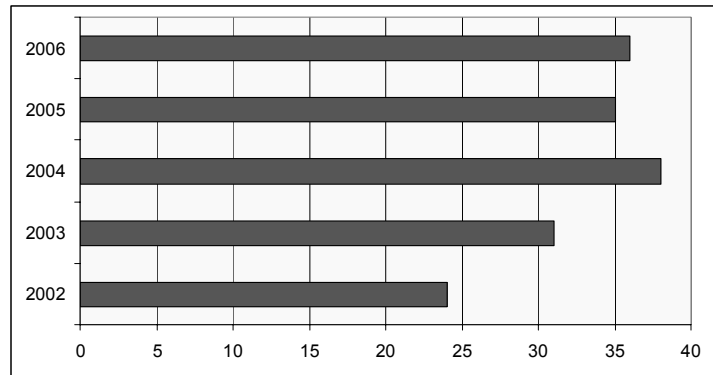
Certification and Licensing Five-Year Trend

Fire Protection Sprinkler License



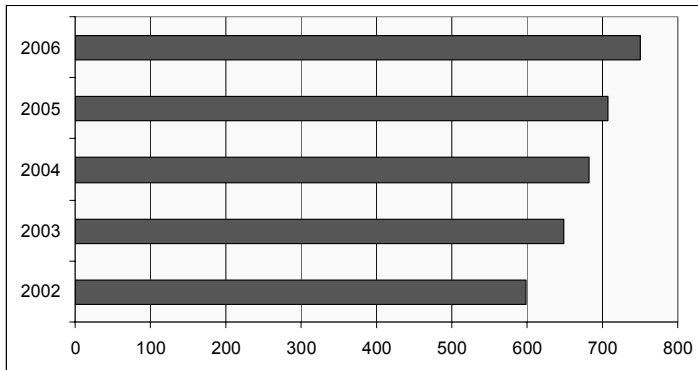
Rule 18.01.49

Fireworks Wholesale or Import License



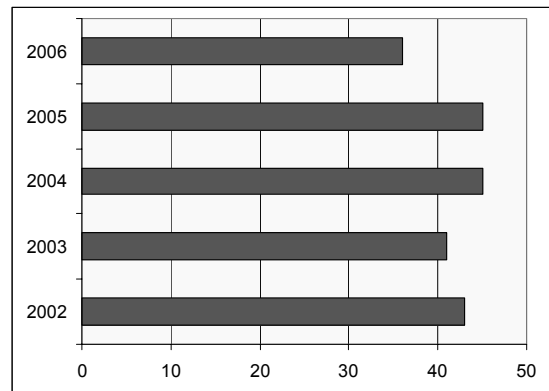
Idaho Code
Section 39-2603

Fire Inspectors



Rule 18.01.43

Fire Protection Sprinkler Fitter



Rule 18.01.49

Fire Origin and Cause Investigation

Fire origin and cause investigation is an important tool for the fire service in preventing and prosecuting the crime of arson. Investigation of a fire scene is also a useful aid in the development and enforcement of fire and building codes.

In 2006, fire departments within the state reported 921 structure fires; 110 of these fires were listed as undetermined and 45 were listed as arson. The State Fire Marshal's Office was requested to assist in the fire origin and cause investigation of 104 structures; 22 of these were determined to be arson and 20 were undetermined.

Incidents were reported by fire departments for 730 vehicle fires; 21 were determined to be arson and 170 were undetermined. Only seven requests were received from departments to assist in the investigation of fires with vehicles, and three of the seven were determined to be arson. The Idaho State Fire Marshal's Office is available on request to assist all local and state agencies in fire origin and cause investigations.

Assistance with fire scene investigations or training in fire origin and cause determination is provided at no cost to public agencies by the three district offices. Fire marshal deputies receive yearly training in order to maintain current knowledge of investigative techniques. In addition to our National Fire Protection Association (NFPA) 921 Course, "Fire Investigations", the Office of the State Fire Marshal has developed the Arson and Evidence Preservation course. This 20-hour course was designed to instruct experienced investigators in a positive approach to arson investigation and prosecution by using a multi-agency investigation to produce a successful case. This course consists of:

- 4 hours – "The Fire Investigation" by the Office of the State Fire Marshal
- 4 hours – "The Crime" by Law Enforcement
- 4 hours – "Insurance Fraud Indicators" by Department of Insurance Investigations
- 2 hours – "Collection and Packaging of Fire Evidence" by State Police Forensic Services
- 6 hours – "Legal-Arson Case Studies and Presentation" by the Office of the Attorney General



Halls Corner Bar, Genesee, Idaho, taken by Mark Aamodt, Deputy Fire Marshal, Office of the State Fire Marshal

District I

Mark Aamodt
2005 Ironwood Parkway #143
Coeur d'Alene, ID 83814
208-769-1447

District II

Richard Hahn
700 W. State Street, 3rd Floor
Boise, ID 83720-0043
208-334-4370

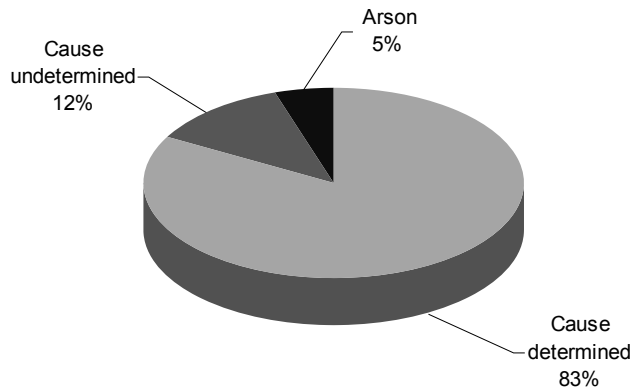
District III

Ivan Hibbert
1820 E. 17th St., Suite 220
Idaho Falls, ID 83404
208-525-7209

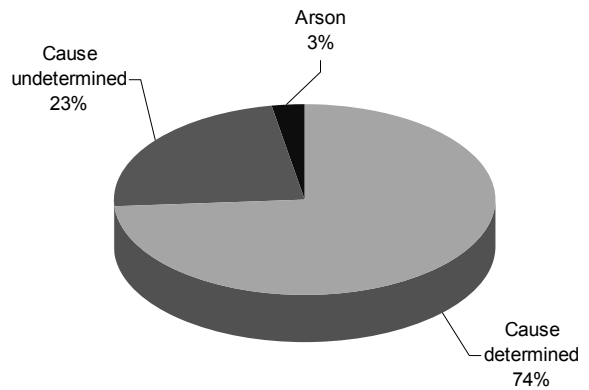


Fire Origin and Cause Investigation

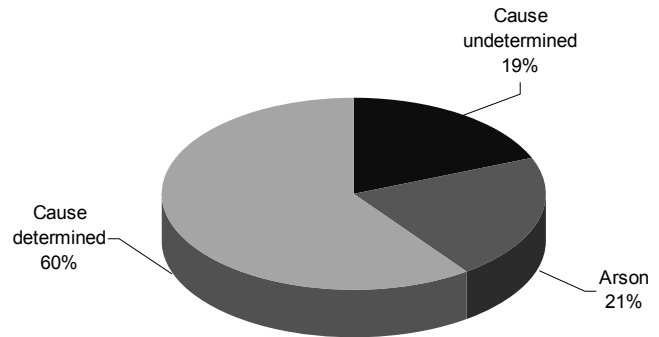
Structure Fires Reported by Idaho Fire Departments



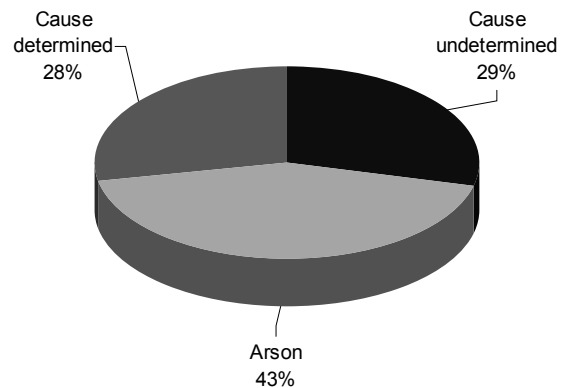
Vehicle Fires Reported by Idaho Fire Departments



Structure Fires Investigated by Idaho State Fire Marshal



Vehicle Fires Investigated by Idaho State Fire Marshal



Summary Statistics

2006 State Incident Summary

Non-Fires (no aid given)



Fires (no aid given)

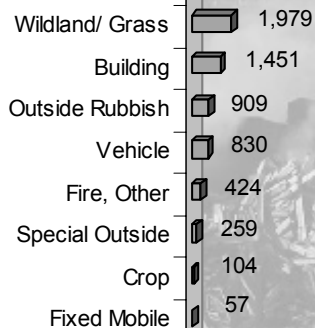


Photo of Challenger Pallet Fire, Jefferson County, Idaho, taken by Veronica McCabe, Central Fire District

Total Responses by Incident Type (Includes Mutual Aid Given)

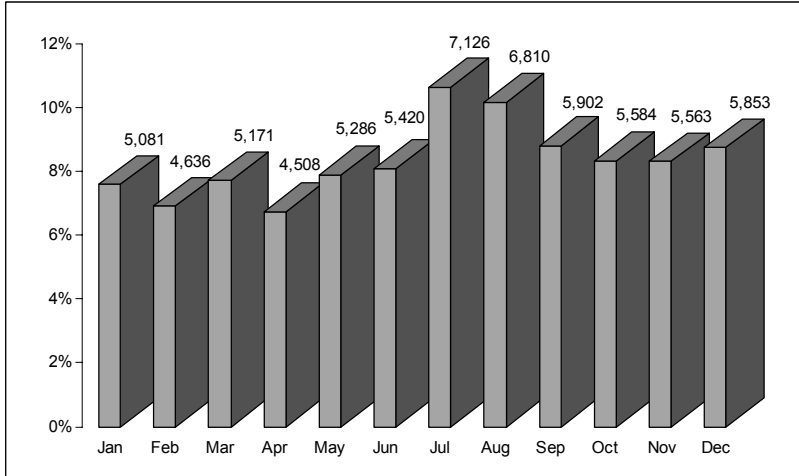
	Incident Count	% of Total Incidents	Average Response Time (minutes)	Average Apparatus per Incident	Average Personnel per Incident	\$ Loss	Civilian Casualties	Fire Svs Casualties
EMS	41,543	58%	7.49	1	4	\$887,500	0	16
Assisted	8,646	12%	4.02	2	4	\$11,765	0	0
Fire	7,272	10%	17.17	3	8	\$46,604,096	92	27
False	5,639	8%	6.25	3	8	\$62,500	0	0
Hazard	3,716	5%	8.29	3	5	\$1,416,975	0	2
Service	3,886	5%	8.34	1	4	\$618,605	0	0
Other	191	0%	7.23	1	4	\$1,500	0	0
Explosion	131	0%	6.04	3	8	\$57,780	0	0
Weather	127	0%	16.05	2	4	\$385,800	0	0
Total	71,151			20	47	\$50,046,521	92	45



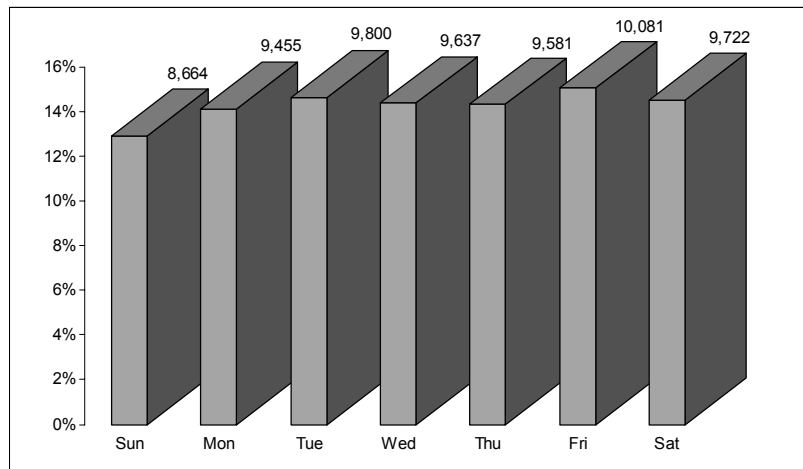
Summary Statistics

Month, Day and Hour (Including Mutual Aid Given)

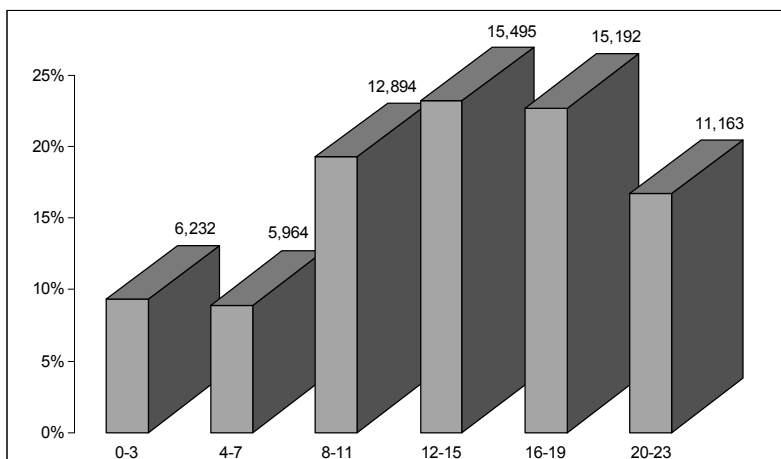
Incidents by Month



Incidents by Day

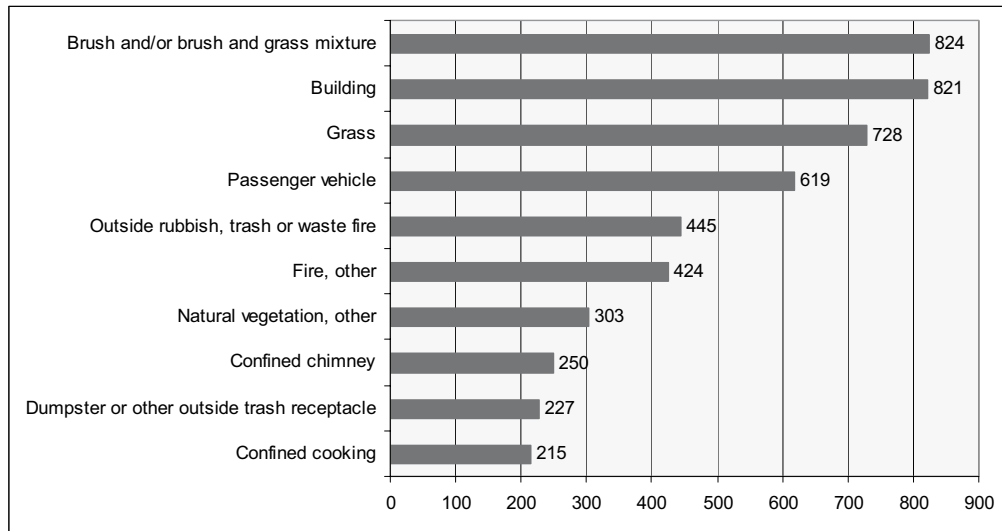


Incidents by Hour



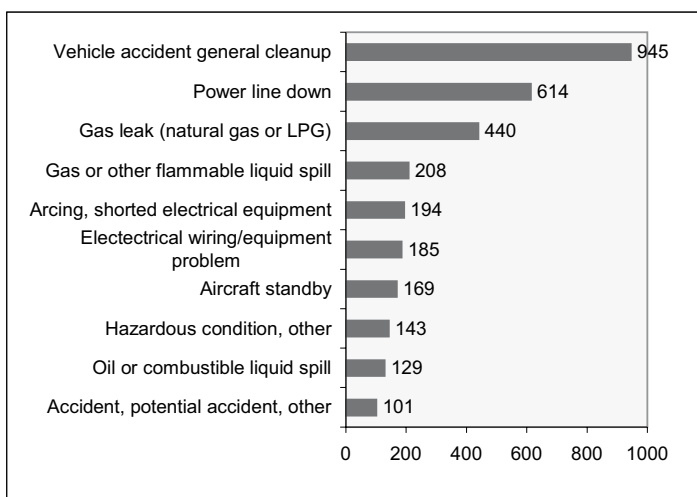
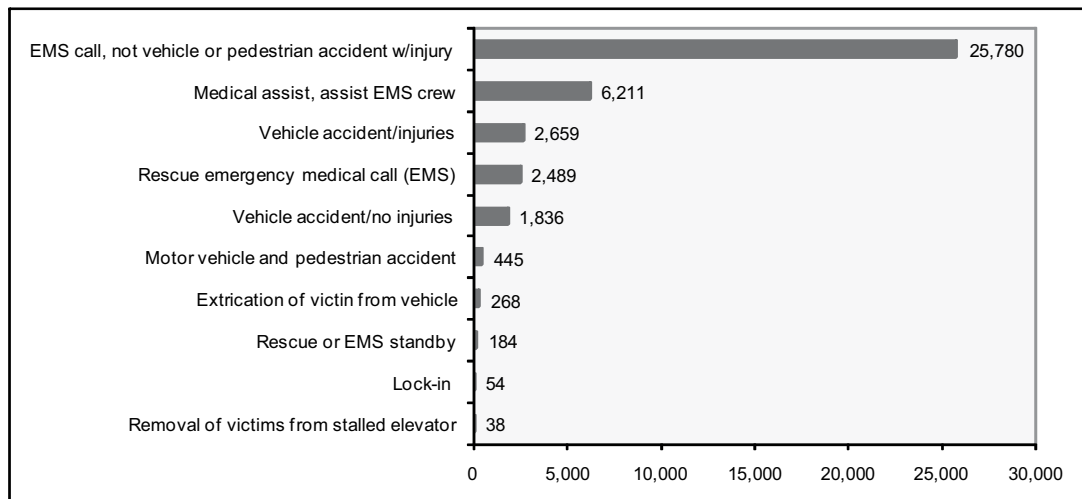
Summary Statistics

Top 10 Incident Type by Incident Category (Mutual Aid Given Reports Not Included)



Fire

EMS

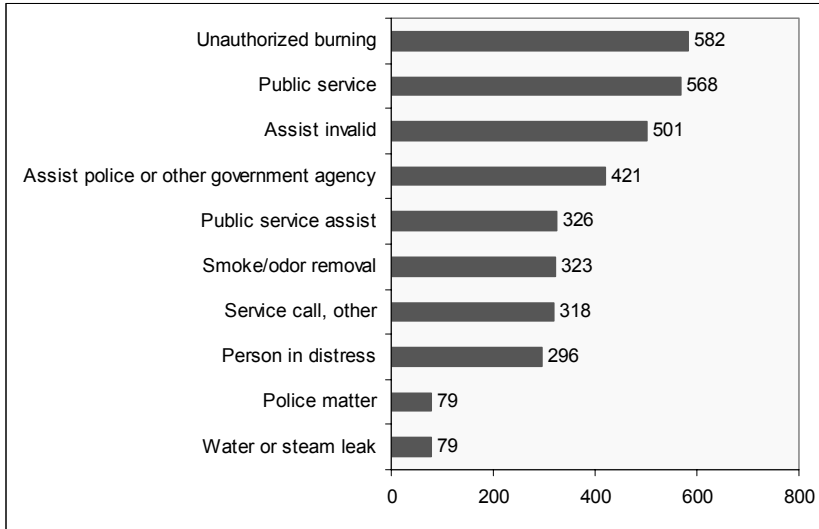


Hazardous Condition



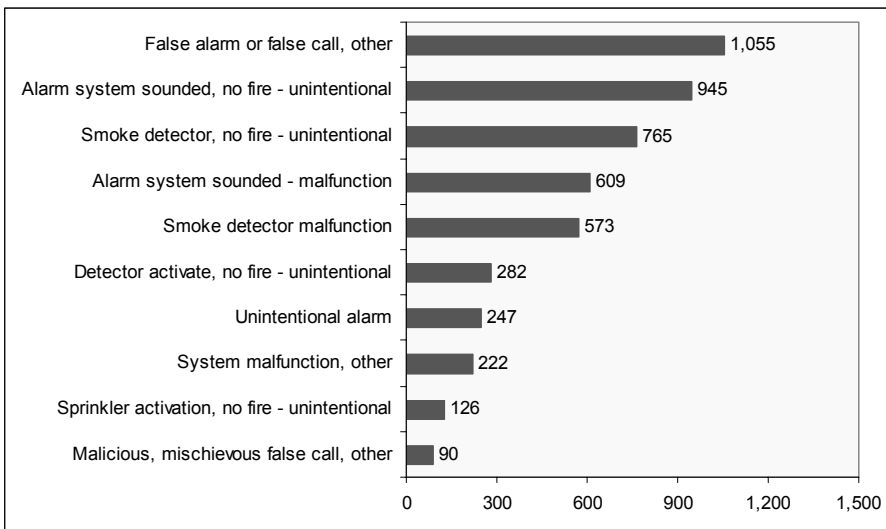
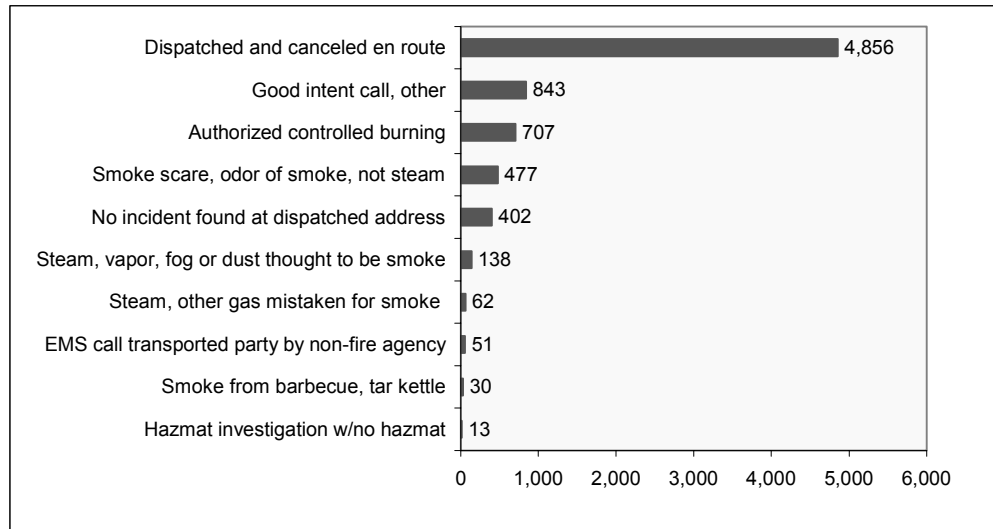
Summary Statistics

Top 10 Incident Type by Incident Category (Mutual Aid Given Reports Not Included) (continued)



Service

Good Intent

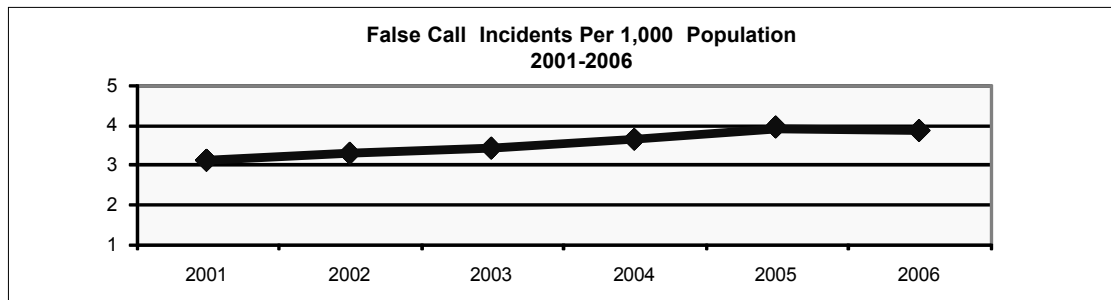
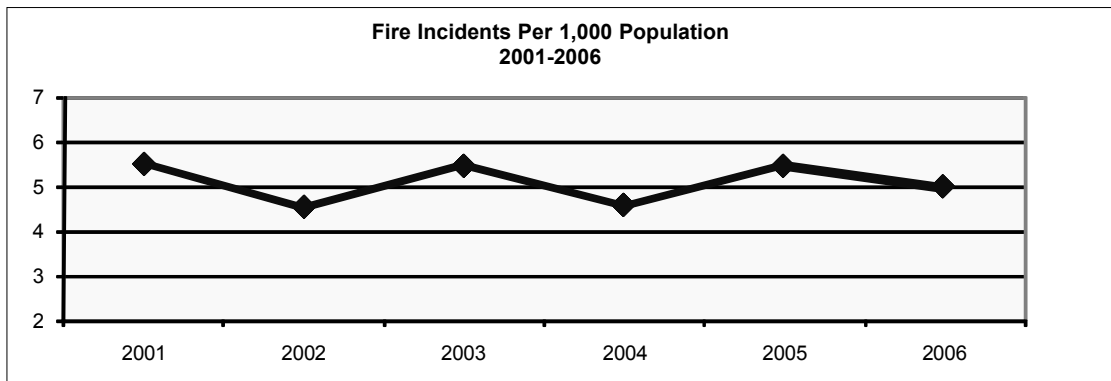
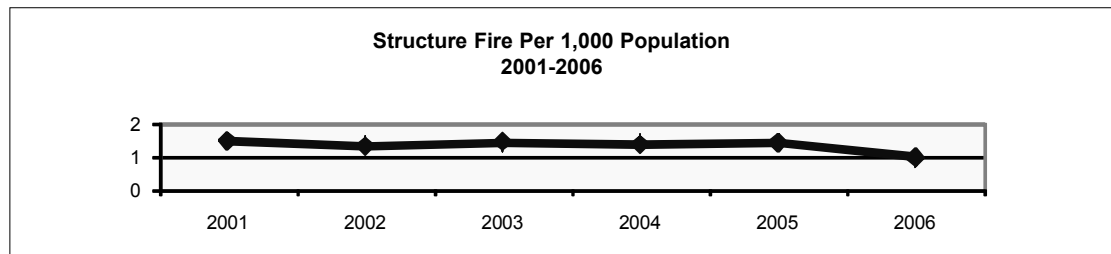
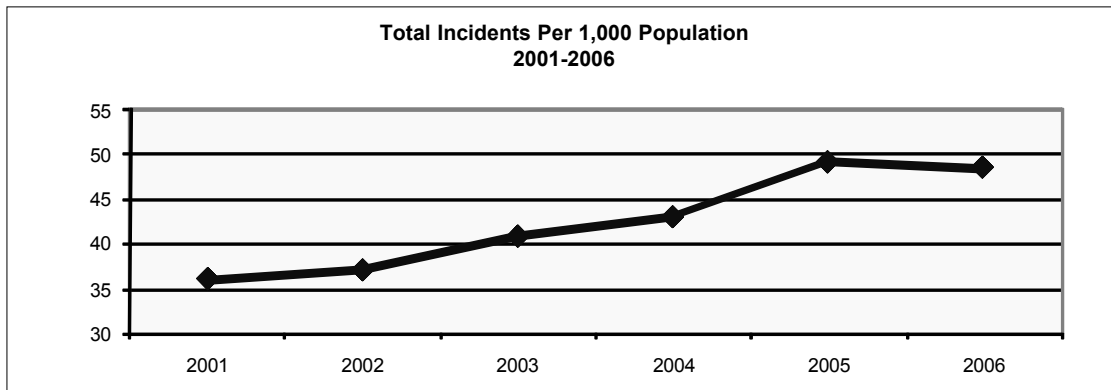


False



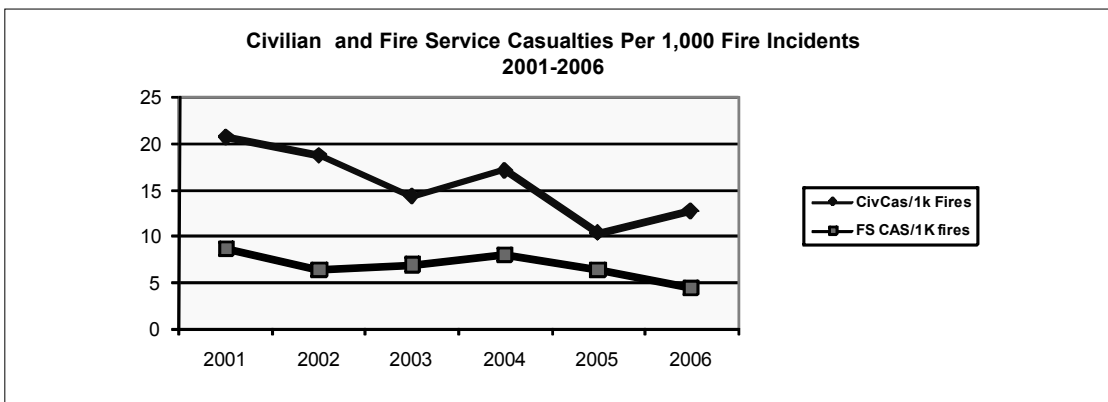
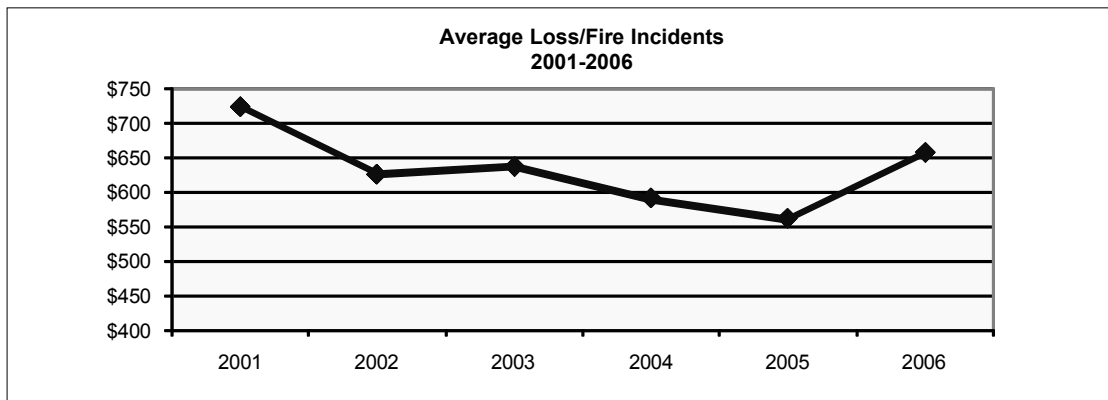
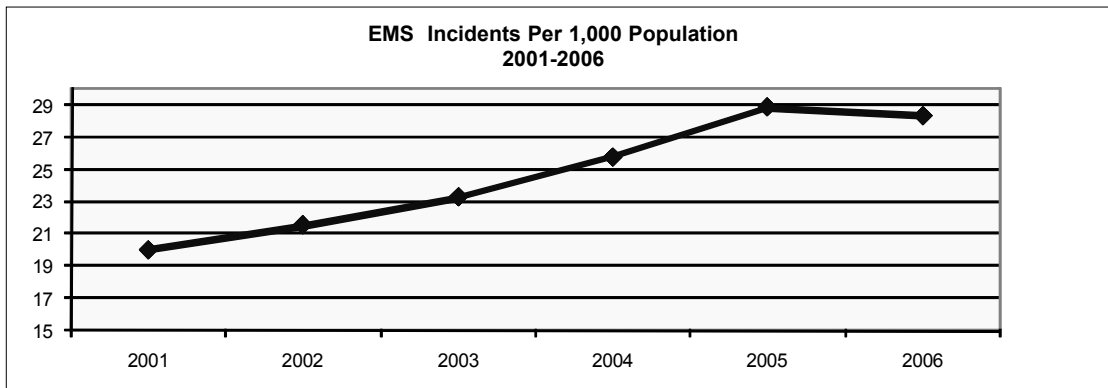
Summary Statistics

Five-Year Trends



Summary Statistics

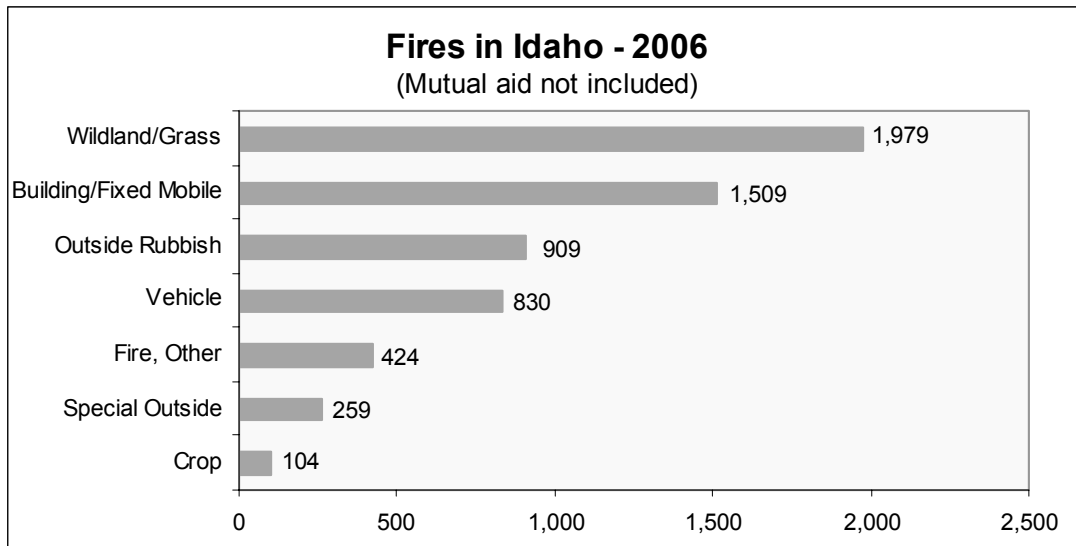
Five-Year Trends (continued)



Structure Fires

Fires in Idaho - 2006

Fire Groups	Incident Count	% of Total Fire Incidents	\$ Loss	Civilian Casualties	Fire Svc Casualties
Wildland/Grass	1,979	33%	\$3,817,321	7	4
Building/Fixed Mobile	1,509	25%	\$37,290,365	75	20
Outside Rubbish	909	15%	\$32,820	0	2
Vehicle	830	14%	\$2,842,140	8	1
Fire, Other	424	7%	\$1,458,033	1	0
Special Outside	259	4%	\$968,517	1	0
Crop	104	2%	\$194,900	0	0
Totals	6,014	100%	\$46,409,196	92	27



Home fire in Kingston, Idaho, taken by Mark Aamodt, Deputy Fire Marshal, Office of the State Fire Marshal



Structure Fires

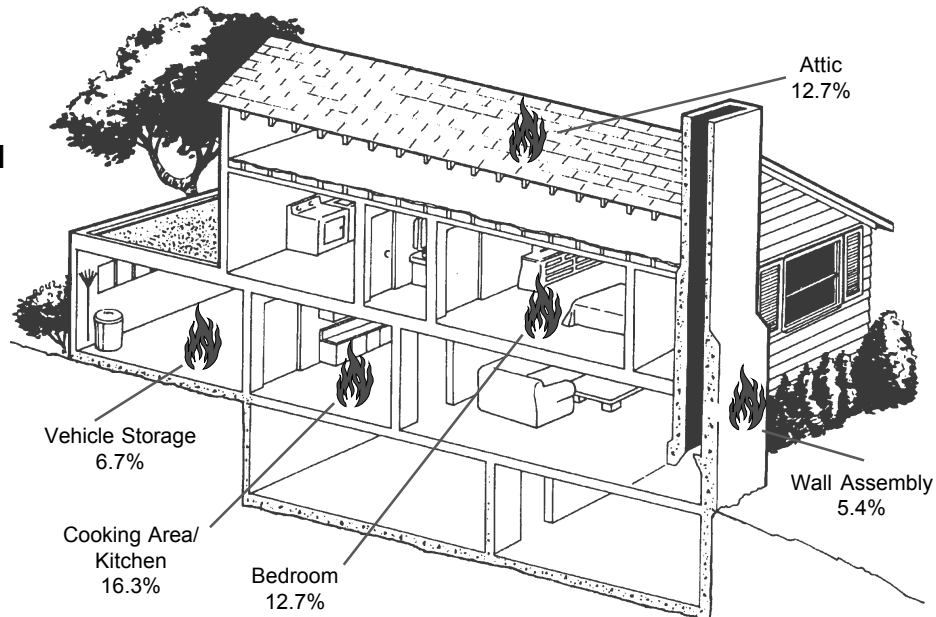
Structure Fires by Property Type

	Incident Count	% of Total Incidents	Response Time (minutes)	\$ Loss	% of Total \$ Loss	Civilian Casualties	% of Total Civ Cas	Fire Svc Casualties	% of Total FS Cas
Residential	1,109	73%	15.25	\$25,970,143	70%	68	91%	13	72%
Storage	124	8%	9.84	\$2,616,960	7%	3	4%	4	22%
Outside/Special Prop	72	5%	7.33	\$150,162	0%	0	0%	1	6%
Business	48	3%	5.17	\$867,100	2%	0	0%	0	0%
Manufacturing	41	3%	6.98	\$5,117,608	14%	3	4%	0	0%
Assembly	39	3%	5.74	\$429,220	1%	0	0%	0	0%
Health Care/Jail	21	1%	4.81	\$777,022	2%	1	1%	0	0%
Other	15	1%	6.27	\$1,077,350	3%	0	0%	0	0%
Industry/Utility/Defense	15	1%	16.00	\$97,700	0%	0	0%	0	0%
Education	13	1%	4.62	\$180,600	0%	0	0%	0	0%
None	12	1%	11.50	\$21,500	0%	0	0%	0	0%
Total/Average	1,509		8.00	\$37,305,365		75		18	

Although residential fires represent 73% of all structure fire incidents, they account for 91% of civilian casualties and 72% of fire service casualties. Residential fires also represent 70% of total building fire losses.

Overall, the average response time for structure fires is 8 minutes. The average response time for residential fires is just over 5 minutes.

Top 5 Identified Areas of Origin for Residential Structures



Residential Fire Area of Origin

	Incident Count	% of Total Incidents	Response Time (minutes)	\$ Loss	% of Total \$ Loss	Civilian Cas	% of Total Civ Cas	Fire Svc Cas	% of Total FS Cas
Cooking area, kitchen	93	16%	6.01	\$907,045	5%	11	21%	0	0%
Bedrm-less than 5 persons; jail/prison included	72	13%	3.17	\$1,338,987	7%	16	31%	4	44%
Attic: vacant, crawl space above top story, cupola	72	13%	7.33	\$1,169,100	6%	0	0%	1	11%
Outside area, other	70	12%	7.03	\$231,150	1%	0	0%	0	0%
Undetermined	51	9%	10.16	\$7,592,707	42%	4	8%	0	0%
Common rm, den, family rm, living rm, lounge	47	8%	7.55	\$2,247,820	12%	7	13%	0	0%
Vehicle storage area; garage, carport	38	7%	6.21	\$1,187,467	7%	3	6%	0	0%
Wall surface: exterior	36	6%	6.42	\$939,500	5%	2	4%	0	0%
Function area, other	35	6%	7.26	\$803,500	4%	5	10%	0	0%
Wall assembly	31	5%	8.52	\$679,560	4%	4	8%	0	0%
Exterior balcony, unenclosed porch	24	4%	6.08	\$999,205	6%	0	0%	4	44%
Totals	569			\$18,096,041		52		9	

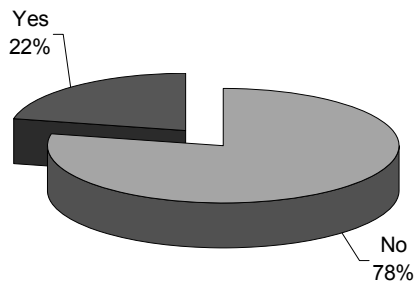


Structure Fires

Residential Structure Fire Spread - Contained in Room of Origin

	Incident Count	% of Total Incidents	\$ Loss	% of Total Loss	Civilian Cas	% of Total Civ Cas	Fire Svc Cas	% of Total FS Cas
No	868	78%	\$23,928,966	92%	55	81%	13	100%
Yes	241	22%	\$2,041,177	8%	13	19%	0	
Total	1,109		\$25,970,143		68		13	

Contained in Room of Origin

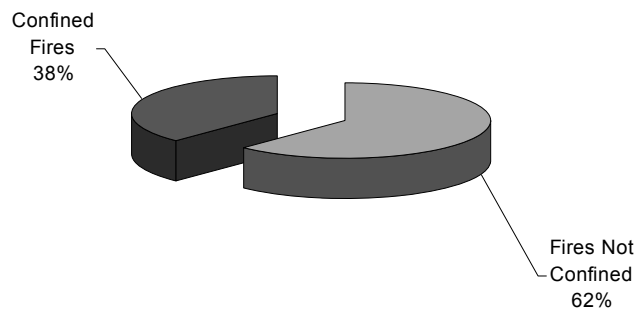


"Contained fire" is defined as fire spread that is reasonably expected to remain in check under prevailing conditions.

	Incident Count	% of Incident Count	\$Loss	Civilian Casualties	Fire Svc Casualties
Fires Not Confined	941	62%	\$37,169,497	68	19
Confined Fires	568	38%	\$72,934	7	1
Total	1,509		\$37,242,431	75	20

Structure Fires - Confined/ Not Confined Fires (Building/Fixed Mobile Property Incidents)

"Confined fires" are defined as fires where the flame does not extend beyond a non-combustible container. Stove top, trash can, or chimney fires are examples of confined fires.



Top 10 Large Fire Loss Events

Estimated Dollar Losses & Value	Date	Location	Responding Fire Department	Property Use	Cause of Fire
\$ 3,127,207	5/21/06	Boise	Boise City Fire Department	Multi-Family Dwelling	Undetermined
\$ 2,000,000	1/3/06	Priest Lake	West Priest Lake Fire Department	1- or 2-Family Dwelling	Failure of Equipment
\$ 1,250,000	12/13/06	Twin Falls	Twin Falls Fire Department	Manufacturing/Processing	Undetermined
\$ 1,000,000	12/27/06	Blaine County	Wood River Fire Protection District	1- or 2-Family Dwelling	Undetermined
\$ 575,000	4/25/06	Post Falls	Kootenai County Fire & Rescue	24-Hour Nursing Home	Undetermined
\$ 500,000	12/28/06	McCall	McCall Fire & Rescue	1- or 2-Family Dwelling	Undetermined
\$ 450,000	12/23/06	Coeur d'Alene	Kootenai County Fire & Rescue	1- or 2-Family Dwelling	Undetermined
\$ 450,000	12/23/06	Nampa	Nampa Fire Department	1- or 2-Family Dwelling	Candles
\$ 400,000	12/22/06	Post Falls	Kootenai County Fire & Rescue	1- or 2-Family Dwelling	Heat source too close to combustibles
\$ 400,000	10/17/06	Moscow	Moscow Fire Department	1- or 2-Family Dwelling	Undetermined



Structure Fires

2006 Idaho Structure Fires by Property Use

NFIRS Code	Property Use	# of Structure Fires
<u>Residential Property Uses</u>		
400	Residential, other	40
419	1 or 2 family dwelling, detached, manufacturing home, mobile home not in transit, duplex	903
429	Multi-family dwelling; includes apartments, condos, town houses, row houses, tenements	133
439	Boarding/rooming house; includes residential hotels and shelter	1
449	Hotels/motels, commercial	8
459	Residential board and care; includes long-term care facilities, halfway houses, and assisted-care housing facilities; excludes nursing facilities	8
460	Dormitory type residence, other	4
462	Sorority house, fraternity house	1
464	Barracks, dormitory; includes nurses' quarters, military barracks, monastery/convent dormitories, bunk houses, workers' barracks	6
<u>Public Property Uses</u>		
	Assembly	39
	Educational	13
	Health care, detention and correction	21
	Mercantile, Business	48
<u>Other Property Uses</u>		
600	Utility, defense, agriculture, mining, other	3
642	Electrical distribution; includes electrical substation, transformers, and utility poles	3
645	Flammable liquid distribution, pipeline, flammable liquid pipeline.	1
647	Water utility. Includes collection, treatment, storage, and distribution of water.	1
648	Sanitation utility; includes incinerators and industrial rubbish burners; excludes dumps and landfills.	5
655	Crops or orchards; includes plant nurseries and greenhouses as well as the processing or packaging of agricultural crops or fruit that occurs on the property	2
700	Manufacturing, processing; properties where there is mechanical or chemical transformation of inorganic or organic substance into new products; includes factories making products of all kinds and properties devoted to operations such as processing, assemb	41
800	Storage, other	5
807	Outside material storage area	8
808	Outbuilding or shed; includes tools and contractor sheds; excludes contractor field offices	63
816	Grain elevator, silo	3
819	Livestock, poultry storage; includes barns, stockyards, and animal pens	8

Structure Fires

880	Vehicle storage, other; includes airplane and boat hangers; excludes parking garages	1
881	Parking garage, detached residential garage; includes detached parking structures associated with multifamily housing	27
882	Parking garage, general vehicle; includes bus, truck, fleet, or commercial parking structures	4
891	Warehouse; includes all general storage facilities; excludes refrigerated storage	2
899	Residential or self storage units; includes mini-storage units	3
900	Outside or special property, other	5
926	Outbuilding, protection shelter; includes toll booths, weather shelters, mailboxes, telephone booths, privies, charitable collection boxes and aerial tramways; excludes parking garages	14
931	Open land or field; includes grasslands and brushlands; excludes crops or areas under cultivation	15
935	Campsite with utilities; includes parks for camping trailers or recreational vehicles	3
936	Vacant lot; undeveloped land, not paved, may include incidental or untended plant growth or building material or debris	6
938	Graded and cared-for plots of land; includes park cemeteries, golf courses, and residential yards	5
960	Street, other	5
961	Highway or divided highway; includes limited-access highways with few intersections or at grade crossings	2
962	Residential street, road or residential driveway	3
963	Street or road in commercial area	1
965	Vehicle parking area; excludes parking garages; includes paved non-residential driveways	7
981	Construction site; excludes buildings under construction or demolition; buildings or structures under construction or demolition should be classified by their proposed or former use	4
984	Industrial plant yard area, not outdoor storage	2

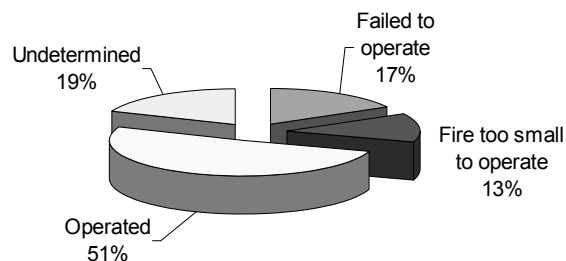
Blue Sky Biodiesel Plant, New Plymouth, Idaho, taken by Dick Hahn, Deputy Fire Marshal, Office of the State Fire Marshal



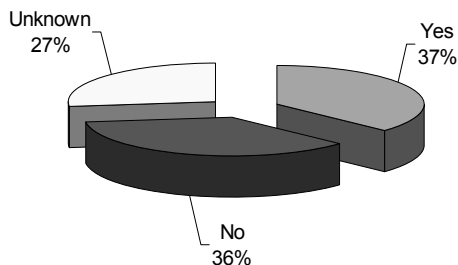
Structure Fires

Smoke Detector Performance

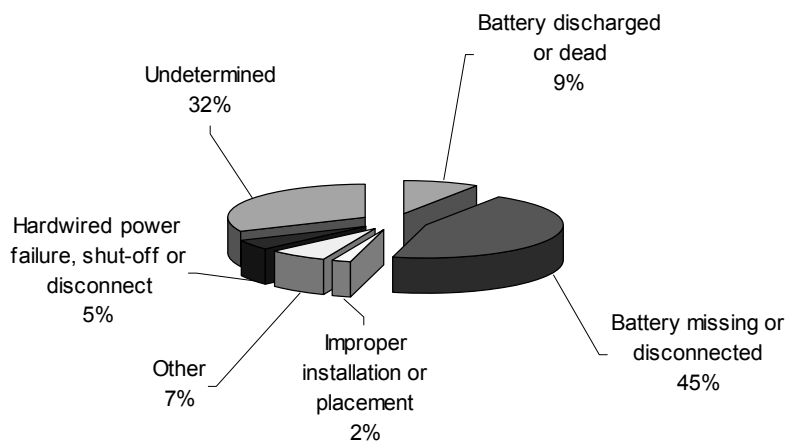
Detectors Operation When Present



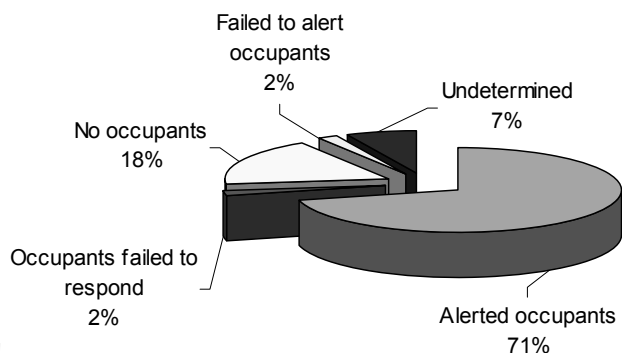
Detectors Present



Detectors Failed When Present



Detectors Effective When Present



When detectors failed to operate:

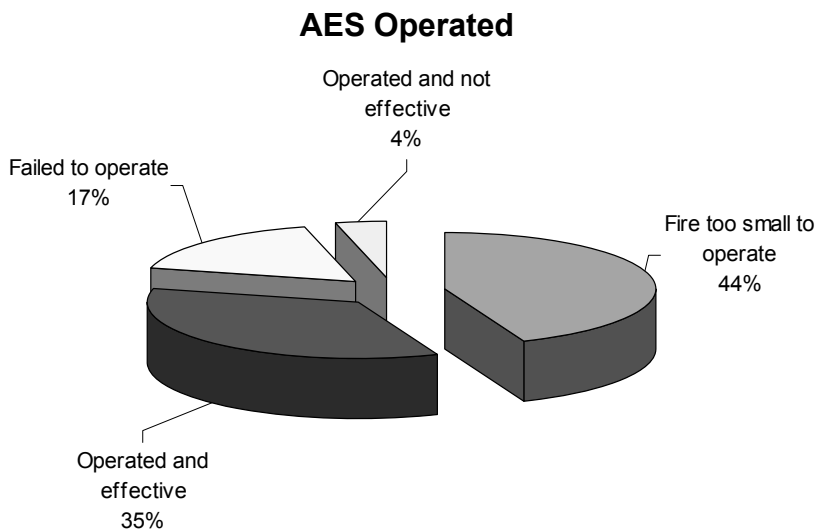
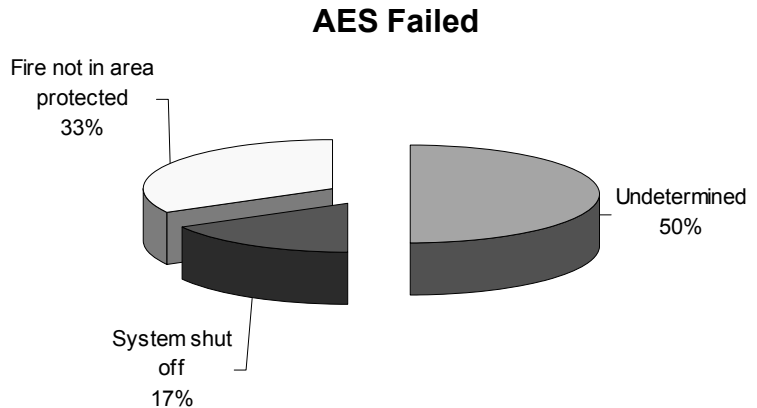
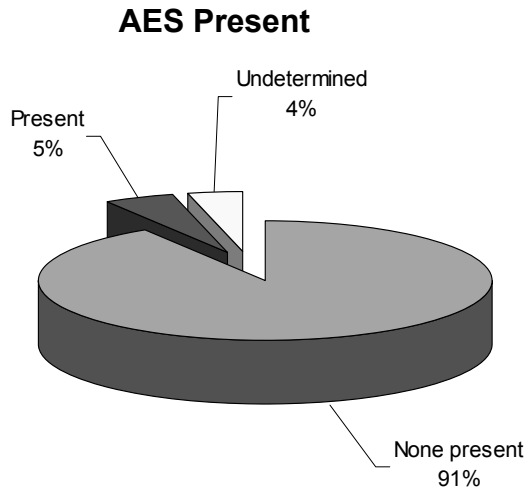
- 2% were not placed properly
- 54% were disconnected or had a dead battery

When smoke detectors operated in occupied buildings they failed to notify occupants in only 2% of the reported incidents.



Automatic Extinguishing Systems (AES)

- Over 90 % of reported fires occurred in unprotected buildings in 2006.
- Our reports show only one fire where an AES operated but was not effective.
- Two significant fires in sprinkled buildings were reported where the fire burned in unprotected areas were reported.
- Reports reflect a loss of over \$500,000 where the sprinkler system was turned off.



Emergency Medical Services

**Ages of Reported EMS Victims
(NFIRS Data)**

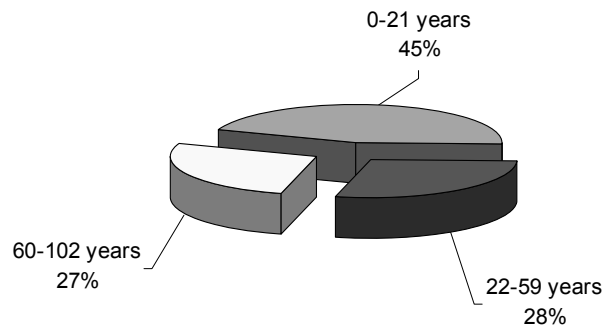
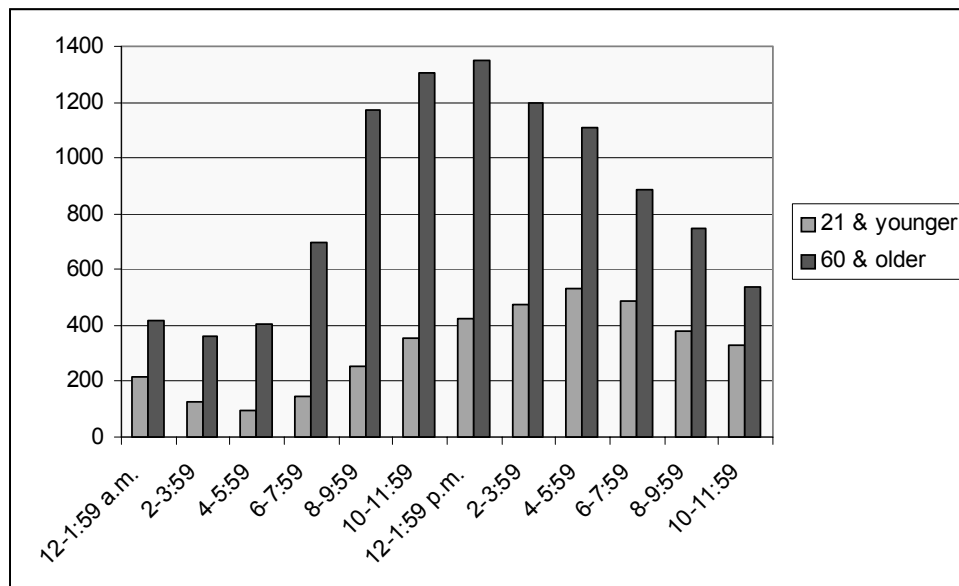


Photo courtesy of Eagle Fire Department

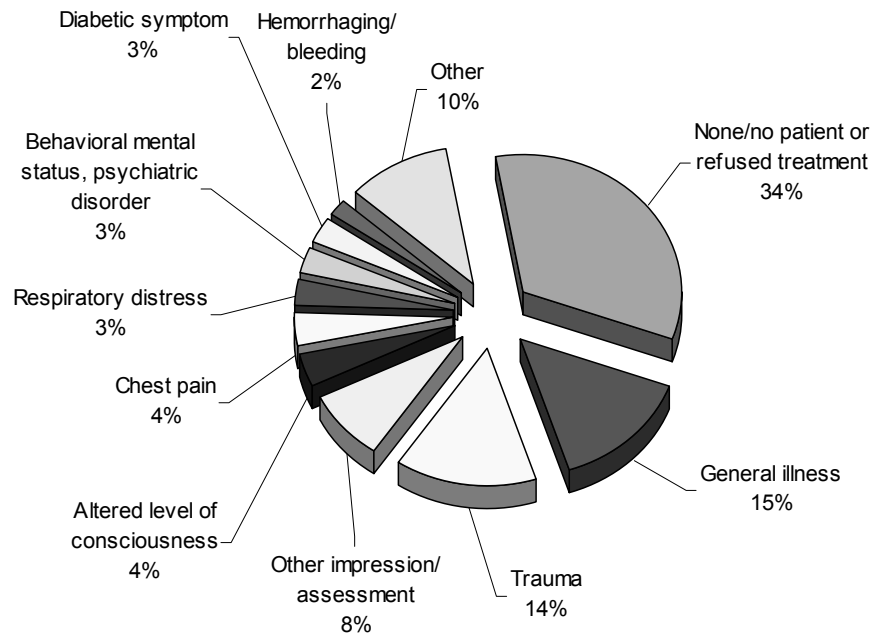


**EMS Calls by Age by Time of Day
(State EMS Bureau Data)**

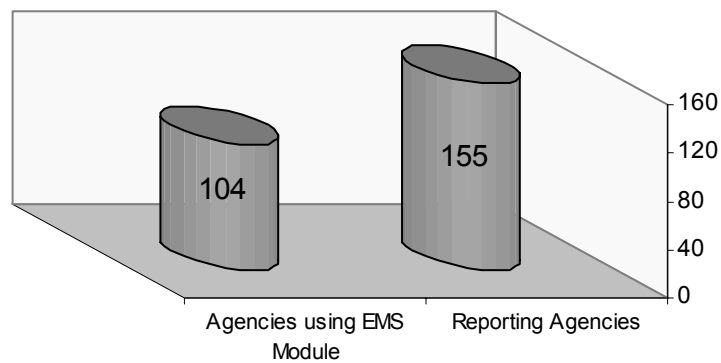


Emergency Medical Services

EMS Assessment of Patient Cause (NFIRS Data)



EMS Reporting Statistics (NFIRS Data)



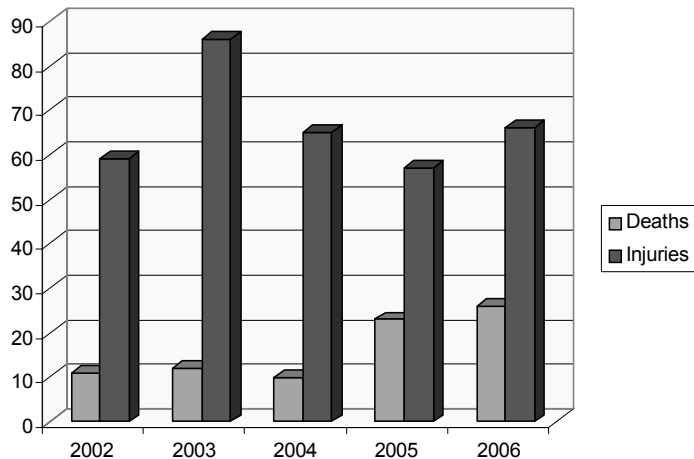
There were 41,543 incidents reported with an EMS incident type. The EMS Module was used for 31,861 of those incidents.

Of the 155 agencies reporting incidents in 2006, 104 (67%) used the EMS Module.

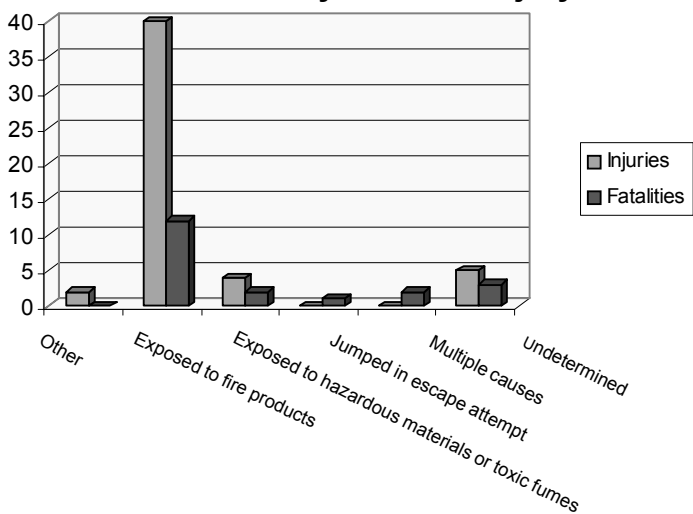
Civilian Fire Casualties

Injuries and Fatalities

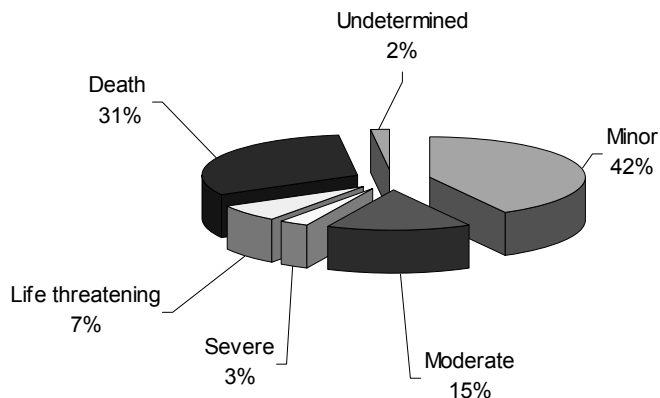
Five-Year Fire Service and Civilian Casualty



Civilian Casualties by Cause of Injury



Civilian Casualties by Severity



Civilian Fire Casualties

2006 Civilian Fire Fatalities

1/24/2006
Boise County
1 male – 40 years old
Accidental – cooking pot left on stove

2/4/2006
Benewah County
1 female – elderly
Incendiary – homicide

2/17/2006
Payette County
1 female – 2 years old
Accidental – children playing with matches

3/9/2006
Gem County
1 male – elderly
Accidental – wood-burning stove

4/22/2006
Bonneville County
1 male – 22 years old
Undetermined – no additional information

5/2/2006
Bonneville County
1 male – 4 years old
Involuntary manslaughter – mother smoking marijuana

5/15/2006
Owyhee County
1 female – 6 years old
Accidental – electrical panel

6/29/2006
Coeur d'Alene Indian Reservation
2 males
Accidental – ignition of propane vapors and fireworks

7/7/2006
Payette
1 male – 26 years old
Accidental – cutting torch, vapor explosion and fire

7/11/2006
Kootenai County
1 male – 30 years old
Undetermined – police action with fire incident

7/27/2006
Ada County
1 male – 53 years old
No information on cause

7/27/2006
Kootenai County
1 female – 3 months
Accidental – burning candle igniting flower arrangement

8/10/2006
Canyon County
1 male – 20 years old
Accidental – vehicle accident and fire

8/11/2006
Shoshone County
1 male – elderly
Accidental – electrical, improper connection of generator

9/22/2006
Kootenai County
2 children
Accidental – no additional information

9/30/2006
Madison County
1 male
1 female
1 child
Incendiary

10/4/2006
Canyon County
1 male – 55 years old
Accidental – vehicle accident and fire

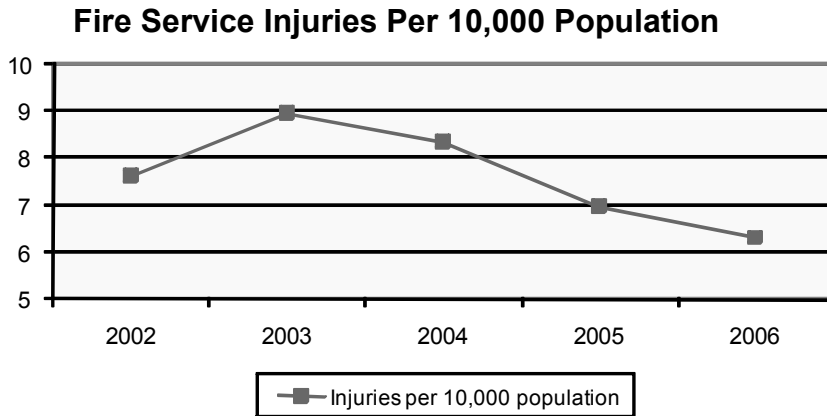
11/25/2006
Shoshone County
1 male
Accidental – cooking pot left on stove

12/18/2006
Bonner County
1 male
1 female
1 infant
Accidental – electrical, clothes dryer

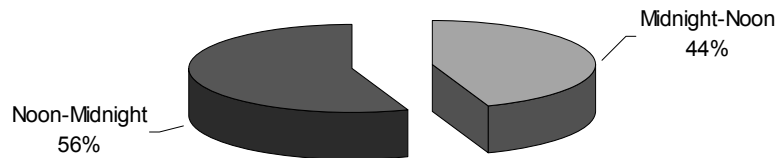
12/30/2006
Shoshone Fire District
1 male
Accidental – cigarette smoking in chair

Fire Service Casualties

Fire Service Injuries



Firefighter Injuries by Time of Day



Fire Service Injuries When Fire is Contained in Room of Origin

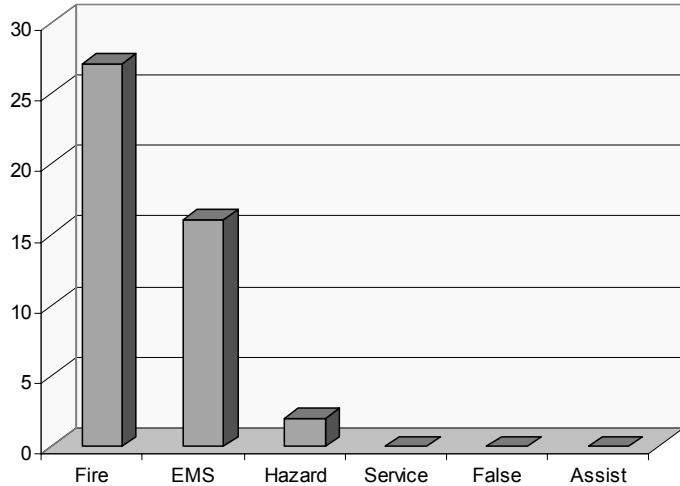
	Incident Count	% of Total Incidents	\$ Loss	% of Total Loss	Fire Svc Cas	% of Total FS Cas
Not Contained	868	78%	\$23,928,966	92%	13	100%
Contained	241	22%	\$2,041,177	8%	0	
Total	1,109		\$25,970,143		13	

"Contained fire" is defined as fire spread that is reasonably expected to remain in check under prevailing conditions.

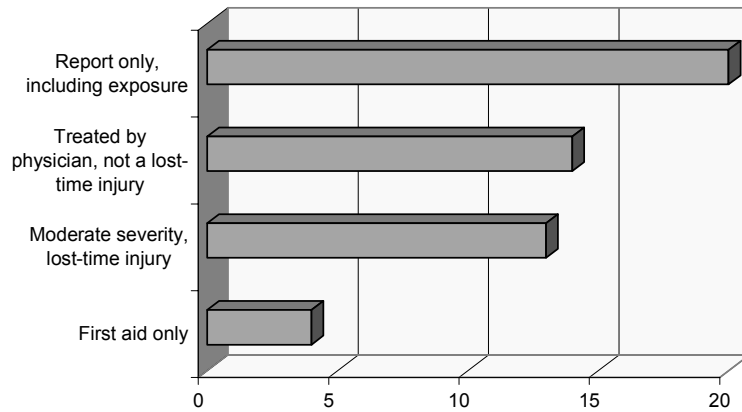
Fire Service Casualties

Fire Service Injuries

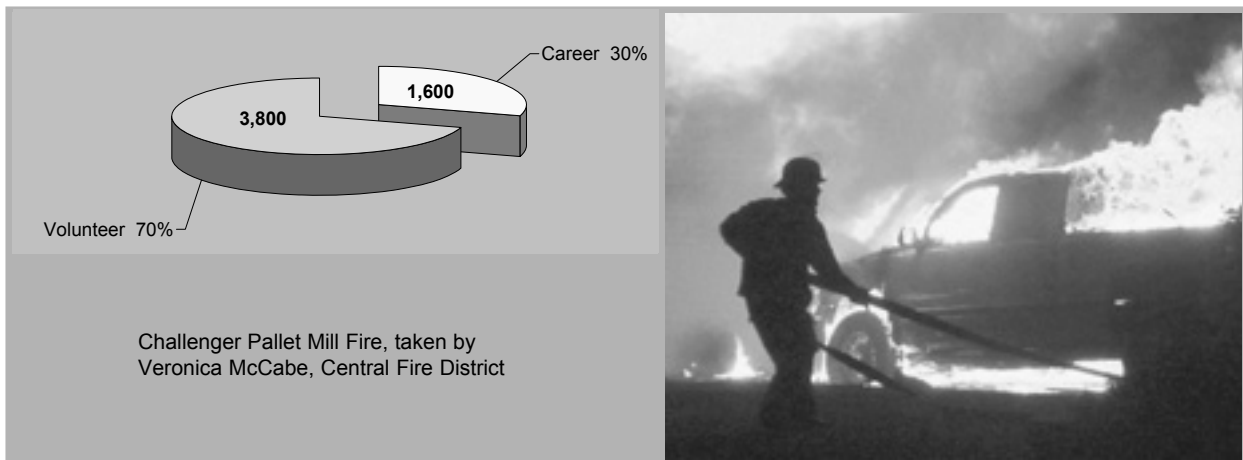
Fire Service Injury Count by Incident Type



Fire Service Injuries by Severity of Injuries



Career and Volunteer Firefighters in Idaho



Wildland Fires

Wildland Fire Trends - Idaho vs. USA

Calendar Year	# of Fires (USA)	# of Fires (ID)	% of Fires	Acres Burned (USA)	Acres Burned (ID)	% Acres of Burned
2006	83,240	1,831	2.2%	9,026,770	933,548	10.3%
2005	52,813	1,154	2.2%	8,156,770	422,391	5.2%
2004	60,656	1,098	1.8%	7,736,637	13,981	0.2%
2003	49,068	1,834	3.7%	3,159,020	313,546	9.9%
2002	67,123	1,486	2.2%	6,568,979	84,964	1.3%

Calendar Year	Primary Structures (ID)	Commercial Structures (ID)	Outbuildings (ID)	Primary Structures (USA)	Commercial Structures (USA)	Outbuildings (USA)
2006	3	2	17	728	67	1,536
2005	1	4	10	342	21	693
2004	1	0	0	340	20	819
2003	10	0	54	4,088	49	1,638
2002	0	0	0	1,090	85	1,643

Photo taken by
Cameron Eck,
Clearwater Potlatch
Timber Association



Fire Stations Across Idaho



Genesee Fire Department



Evergreen Rural Fire Department



Jerome City Fire Department



Hall Mountain Volunteer Fire
Association Station #1



Gooding Fire Department



Eagle Fire Department

The Importance of Data Quality Control in Fire Department Incident Reporting

The incident report is a legal record.

The incident report must accurately reflect the event.

The incident date is used at local, state, and national levels.

The incident report is not static. Details of the report should change as more information becomes available due to further investigations by the fire department or due to a change as a direct result of the initial incident. The incident report is updated whenever the conditions or facts of the incident changes.

Reporting errors are grouped into two categories: critical and warning.

Critical Error – data that is required and must be provided on the report to allow the report to be complete or valid. A report with a critical error is marked as an invalid incident.

Warning Error – data that is either missing or incorrect on the report; a warning error will not prevent the report from being marked as complete or invalid.

Examples of quality issues that may not show up as errors to the system but need a recheck for correctness, such as:

- “Alarm, Arrival and Last Unit Cleared” dates and times can significantly effect the response time calculation.
- “Undetermined” or “Under Investigation” reports can be revised if the cause was determined at a later date.
- Property and Content Loss are estimates and provide valued information for determining the magnitude of the fire problem and possible financial support for fire protection. Insurance companies do not use report estimates for replacement value of property or contents.



Departments NOT reporting in 2006

These non-reporting departments had not yet submitted incidents as of June 1, 2007. Their reports may have had an effect on the statistics.

Aberdeen/Springfield Fire District	Island Park Fire Protection District
Ace Fire Protection Association Unit	Jerome Rural Fire District #1
Albion Fire Protection District	Juliaetta Volunteer Fire Department
American Falls City Fire Department	Kamiah City & Rural Fire Protection District
American Falls Rural Fire Protection District	Kendrick Volunteer Fire Department
Arimo Fire Protection District	Kootenai Valley Forest Protection District
Atlanta Rural Fire Department	Kuna Rural Fire District
Atomic City Fire Department	Lapwai Fire Department
Big Canyon Fire District	Leadore Fire Department
Bovill Fire Department	Lemhi County Fire Protection District
Bruneau Fire Protection District	Meadows Valley Fire Protection District
Camas County/Fairfield Fire Department	Moyie Springs Fire Department
Cambridge Fire Protection District	Mullan-Shoshone Co Fire Protection Dist #3
Carey Rural Fire Protection District	Nezperce Fire Department
Caribou County Fire Department	North Fork Fire District
Carrot Ridge Volunteer Fire District	North Fremont Fire Protection District
Castleford Fire Department	Northside Fire Department
Centerville Volunteer Fire District	Notus Fire Department
Clark Fork Valley Fire District #4	Oneida County Fire Protection District
Clayton Fire Department	Pahsimeroi Fire Protection District
Clear Creek Fire Department	Parma Fire Department
Clearwater Fire Service	Placerville Fire Protection District
Craigmont Fire Department	Pocatello Valley Fire Department
Culdesac Volunteer Fire Department	Potlatch Corporation SMC
Curley Creek Volunteer Fire Department	Potlatch Rural Fire Protection District
Declo Fire Department	Prichard/Murray Volunteer Fire District
Downey Volunteer Fire Department	Reubens Fire Department
Dubois City Fire Department	Richfield Fire Protection District
East End Fire Protection District	Roberts Fire Department
Elk Bend Fire District	Rockland Rural Fire District
Elk City Volunteer Fire Department	Salmon City/Lemhi Co Fire Prot Dist #1
Elk River Fire Department	Salmon Tract Rural Fire Protection District
Ferdinand Rural/City Fire Department	Sawtooth Valley Rural Fire Department
Fernwood Rural Fire Protection District	Sesach Meadows Fire District
Gem County Fire Protection District #1	Shoshone City Fire Department
Gibbonsville Volunteer Fire Department	South Idaho Timber Protective Association
Glenwood/Caribel Volunteer Fire District	St. Anthony Volunteer Fire Department
Grace Fire Department	St. Joe Valley Fire District
Grandjean Volunteer Fire Department	St. Maries Fire Protection District
Grangemont Volunteer Fire District	Stibnite Fire Department
Greer Rural Fire Protection District	Tensed Rural Fire District
Hall Mountain Volunteer Fire Association	Upper Deer Flat Fire Department
Hamer Fire Protection District	Upper Fords Creek Rural Fire Department
Harpster Volunteer Fire Department	Weippe Fire Department
High Valley Fire Protection Association	West Jefferson Fire Control District
Homedale Fire Department	West Magic Fire District
Hope-East Hope Volunteer Fire District	Winchester Volunteer Fire Department
Inkom Fire Department	Yellow Pine Volunteer Fire Department

FDID	DEPARTMENT NAME	POPULATION PROTECTED	FIRE	EXPLOSIONS	EMS	HAZARDOUS CONDITION	SERVICE CALL	GOOD INTENT CALL	FALSE ALARM	NATURAL DISASTER	OTHER	TOTALS	PERCENT OF TOTAL	\$ LOSS	FIRE SVC FATALITY	FIRE SVC INJURY	CIVILIAN FATALITY	CIVILIAN INJURY	
ADA COUNTY																			
01100	BOISE FD	193,085	767	29	11,241	422	1,040	1,555	1,555	12	34	16,655	23.41%	\$3,524,153	0	2	1	1	
01344	EAGLE FD	22,000	81	1	209	25	71	119	76	5	1	588	0.83%	\$911,500	0	0	0	0	
01246	KUNA RURAL FIRE DIST	25,000	0	0	0	0	0	0	0	0	0	0	0.00%	\$0	0	0	0	0	
01313	MERIDIAN FD	77,000	247	5	2,096	78	182	526	382	5	2	3,523	4.95%	\$1,290,025	0	1	0	1	
01236	NORTH ADA CTY FIRE & RESCUE	25,000	155	1	1,457	61	109	268	156	1	1	2,209	3.10%	\$0	0	1	0	0	
01342	STAR JOINT FPD	7,500	12	0	63	5	4	0	8	0	0	92	0.13%	\$0	0	0	0	0	
	TOTALS	349,585	1,262	36	15,066	591	1,406	2,468	2,177	23	38	23,067	32.42%	\$5,725,678	0	4	1	2	
ADAMS COUNTY																			
03338	BEAR FIRE DIST	0	0	0	0	0	0	0	0	0	0	0	0.00%	\$0	0	0	0	0	
03320	COUNCIL VALLEY VFD	1,500	5	0	0	1	46	5	3	1	1	62	0.09%	\$0	0	0	0	0	
03310	CUPRUM FD	11	0	0	0	0	0	0	0	0	0	No Incidents	0.00%	\$0	0	0	0	0	
03334	INDIAN VALLEY RURAL FD	600	9	0	1	0	0	3	0	0	0	13	0.02%	\$0	0	2	0	0	
03340	MEADOWS VALLEY FPD	1,200	0	0	0	0	0	0	0	0	0	0	0.00%	\$0	0	0	0	0	
	TOTALS	3,311	14	0	1	1	46	8	3	1	1	75	0.11%	\$0	0	2	0	0	
BANNOCK COUNTY																			
05322	ARIMO FPD	314	0	0	0	0	0	0	0	0	0	0	0.00%	\$0	0	0	0	0	
05207	CHUBBUCK FD	20,000	90	1	44	19	38	29	0	0	4	226	0.32%	\$189,230	0	0	0	1	
05326	DOWNNEY VFD	672	0	0	0	0	0	0	0	0	0	0	0.00%	\$0	0	0	0	0	
05328	INKOM FD	2,500	0	0	0	0	0	0	0	0	0	0	0.00%	\$0	0	0	0	0	
05329	LAVA HOT SPRINGS VFD	2,800	8	0	1	1	5	1	3	0	0	19	0.03%	\$63,000	0	0	0	1	
05340	MCCAMMON FD	1,700	24	1	2	2	1	2	1	0	0	33	0.05%	\$232,400	0	0	0	0	
05101	POCATELLO FD	53,000	149	5	2,241	102	67	145	214	2	9	2,934	4.12%	\$748,915	0	0	0	6	
05331	POCATELLO VALLEY FD	8,500	0	0	0	0	0	0	0	0	0	0	0.00%	\$0	0	0	0	0	
	TOTALS	89,486	271	7	2,245	149	92	186	247	2	13	3,212	4.51%	\$1,233,545	0	0	0	8	
BEAR LAKE COUNTY																			
07343	BENNINGTON FD	2,300	13	0	0	0	11	0	0	0	0	24	0.03%	\$20,800	0	0	0	0	
07335	DINGLE FD	100	1	0	0	0	0	0	0	0	0	1	0.00%	\$0	0	0	0	0	
07341	FISH HAVEN FD	100	4	0	0	0	0	0	0	0	0	4	0.01%	\$14,500	0	0	0	0	
07339	GENEVA FD	100	1	0	0	0	0	0	0	0	0	1	0.00%	\$0	0	0	0	0	
07337	GEORGETOWN	538	2	0	0	1	0	0	0	0	0	3	0.00%	\$200	0	0	0	0	
07301	MONTPELLIER FD	2,900	6	0	0	2	0	0	0	0	0	8	0.01%	\$215,000	0	0	0	0	
07344	NOUNAN FD	50	1	0	0	0	0	0	0	0	0	1	0.00%	\$63,000	0	0	0	0	
07336	OVID FD	10	11	0	0	1	0	0	0	0	0	12	0.02%	\$6,500	0	0	0	0	
07334	PARIS FD	576	1	0	0	0	0	1	0	0	0	2	0.00%	\$0	0	0	0	0	
07338	PEGRAM FD	100	3	0	0	0	0	1	0	0	0	4	0.01%	\$0	0	0	0	0	
07342	ST CHARLES FD	156	6	0	0	0	0	0	0	0	0	6	0.01%	\$2,000	0	0	0	0	
	TOTALS	6,930	49	0	0	4	11	2	2	0	0	66	0.09%	\$322,000	0	0	0	0	
BENEWAH COUNTY																			
09330	FERNWOOD RURAL FPD	650	0	0	0	0	0	0	0	0	0	0	0.00%	\$0	0	0	0	0	
09302	GATEWAY FPD	2,750	33	0	17	5	1	15	5	0	0	76	0.11%	\$19,000	0	0	0	0	
N/A	POTLATCH CORP SMC	0	0	0	0	0	0	0	0	0	0	0	0.00%	\$0	0	0	0	0	
09366	ST. MARIES FPD	126	0	0	0	0	0	0	0	0	0	0	0.00%	\$0	0	0	0	0	
	TOTALS	3,526	33	0	17	5	1	15	5	0	0	76	0.11%	\$19,000	0	0	0	0	

FDID	DEPARTMENT NAME	POPULATION PROTECTED	FIRE	EXPLOSIONS	EMS	HAZARDOUS CONDITION	SERVICE CALL	GOOD INTENT CALL	FALSE ALARM	NATURAL DISASTER	OTHER	TOTALS	PERCENT OF TOTAL	\$ LOSS	FIRE SVC FATALITY	FIRE SVC INJURY	CIVILIAN FATALITY	CIVILIAN INJURY	
BINGHAM COUNTY																			
11303	ABERDEEN / SPRINGFIELD FIRE DIST	2,800	0	0	0	0	0	0	0	0	0	0	0.00%	\$0	0	0	0	0	
11360	ATOMIC CITY FD	32	0	0	0	0	0	0	0	0	0	0	0.00%	\$0	0	0	0	0	
11101	BLACKFOOT FD	26,000	72	4	1	17	13	20	36	0	1	164	0.23%	\$78,910	0	0	0	0	
11354	FIRTH FIRE DIST	5,000	45	0	24	5	1	9	2	0	0	86	0.12%	\$2,000	0	0	0	0	
11334	FORT HALL FPD	9,500	83	1	1	15	5	16	17	1	1	140	0.20%	\$15,300	0	0	0	0	
11355	SHELLEY FIRTH RURAL FPD	8,700	19	0	12	4	0	2	5	0	0	42	0.06%	\$120,000	0	0	0	0	
	TOTALS	52,032	219	5	38	41	19	47	60	1	2	432	0.61%	\$216,210	0	0	0	0	
BLAINE COUNTY																			
13302	BELLEVUE FD	2,400	15	4	3	13	0	1	5	1	0	42	0.06%	\$167,500	0	0	0	0	
13354	CAREY RURAL FPD	1,500	0	0	0	0	0	0	0	0	0	0	0.00%	\$0	0	0	0	0	
13301	HAILLEY FD	8,600	40	2	301	29	11	12	28	0	0	423	0.59%	\$389,855	0	0	0	0	
13203	KETCHUM FD	11,200	44	0	558	55	29	160	70	9	2	927	1.30%	\$184,055	0	0	0	0	
13306	SUN VALLEY FD	1,000	10	2	82	13	4	9	50	1	0	171	0.24%	\$35,000	0	0	0	0	
13334	WOOD RIVER FPD	5,000	51	0	595	7	50	50	3	0	0	756	1.06%	\$1,078,800	0	0	0	0	
	TOTALS	29,700	160	8	1,539	117	94	232	156	11	2	2,319	3.26%	\$1,855,210	0	0	0	0	
BOISE COUNTY																			
15309	CENTERVILLE VFD	300	0	0	0	0	0	0	0	0	0	0	0.00%	\$0	0	0	0	0	
15330	CLEAR CREEK FD	400	0	0	0	0	0	0	0	0	0	0	0.00%	\$0	0	0	0	0	
15311	GARDEN VALLEY RURAL FD	2,000	23	0	36	2	0	7	1	0	0	69	0.10%	\$680,350	0	0	1	0	
15320	GRANDJEAN VFD	25	0	0	0	0	0	0	0	0	0	0	0.00%	\$0	0	0	0	0	
15315	HORSESHOE BEND FD	1,000	2	0	1	0	0	1	0	0	0	4	0.01%	\$19,800	0	0	0	0	
15345	HORSESHOE BEND RURAL FD	21	0	10	13	1	5	1	0	0	0	51	0.07%	\$5,500	0	0	0	0	
15324	IDAHO CITY FD	2,500	2	0	3	1	0	2	0	0	0	8	0.01%	\$120,500	0	0	0	0	
15342	LOWMAN VOL FIRE DIST, INC.	250	2	0	1	0	0	0	0	0	0	3	0.00%	\$0	0	0	0	0	
15301	PLACERVILLE FPD	100	0	0	0	0	0	0	0	0	0	0	0.00%	\$0	0	0	0	0	
15313	ROBIE CREEK VFD	300	5	0	3	0	5	1	0	0	0	14	0.02%	\$0	0	0	0	0	
15335	VALLEY OF THE PINES VFD	50	6	0	2	1	0	1	0	2	0	12	0.02%	\$650	0	0	0	1	
15340	WILDERNESS RANCH FPD	300	25	0	31	2	3	3	0	1	0	65	0.09%	\$0	0	0	0	0	
	TOTALS	7,225	86	0	87	19	9	20	2	3	0	226	0.32%	\$826,800	0	0	1	1	
BONNER COUNTY																			
17314	CLARK FORK VALLEY FIRE DIST 4	3,000	0	0	0	0	0	0	0	0	0	0	0.00%	\$0	0	0	0	0	
17344	COOLIN-CAVANAUGH BAY FPD	300	6	0	4	1	0	2	1	0	0	14	0.02%	\$273,000	0	0	0	0	
17316	HOPE-EAST HOPE VOL FIRE DIST	1,000	0	0	0	0	0	0	0	0	0	0	0.00%	\$0	0	0	0	0	
17339	NORTH OF THE NARROWS FD	1,000	0	0	0	1	0	0	4	0	0	5	0.01%	\$0	0	0	0	0	
17333	NORTHSIDE FPD	2,500	46	0	5	96	14	51	29	2	0	243	0.34%	\$25,000	0	0	0	0	
17341	SAGLE FIRE DIST	8,000	76	0	360	27	57	38	45	3	1	607	0.85%	\$83,800	0	0	0	3	
17360	SAM OWEN FIRE DIST	50	7	0	1	2	1	0	0	0	1	12	0.02%	\$0	0	0	0	0	
17201	SANDPOINT FD	8,000	32	1	556	31	62	62	41	0	2	787	1.11%	\$209,100	0	1	0	0	
17349	SCHWEITZER FPD	2,000	2	0	44	2	0	2	1	0	0	51	0.07%	\$1,031,000	0	0	0	0	
17337	WEST PEND OREILLE FIRE DIST	2,000	39	1	38	56	65	20	48	1	5	273	0.38%	\$603,800	0	0	0	0	
17319	WEST PRIEST LAKE FD	600	7	0	2	1	1	1	0	3	0	15	0.02%	\$2,432,300	0	0	0	0	
17335	WESTSIDE FPD	4,497	21	0	105	6	16	10	2	0	0	160	0.22%	\$246,025	0	0	0	0	
	TOTALS	31,947	236	2	1,115	223	216	186	171	9	9	2,167	3.05%	\$4,904,025	0	1	3	0	

FDID	DEPARTMENT NAME	POPULATION PROTECTED	FIRE	EXPLOSIONS	EMS	HAZARDOUS CONDITION	SERVICE CALL	GOOD INTENT CALL	FALSE ALARM	NATURAL DISASTER	OTHER	TOTALS	PERCENT OF TOTAL	\$ LOSS	FIRE SVC FATALITY	FIRE SVC INJURY	CIVILIAN FATALITY	CIVILIAN INJURY
BONNEVILLE COUNTY																		
19315	AMMON FD	8,700	16	0	0	2	4	0	6	15	0	0	43	0.06%	\$800	0	0	0
19340	GREATER SWAN VALLEY FPD # 2	1,000	1	0	1	0	0	0	0	0	0	0	2	0.00%	\$0	0	0	0
19101	IDAHO FALLS FD	83,000	332	9	1,745	176	33	300	272	4	4	2,875	4.04%	\$1,234,050	0	0	2	1
19317	UCON FD	943	3	1	0	2	0	0	12	0	0	18	0.03%	\$6,000	0	0	0	0
	TOTALS	93,643	352	10	1,748	182	33	306	299	4	4	2,938	4.13%	\$1,240,850	0	0	2	1
BOUNDARY COUNTY																		
21301	BONNERS FERRY FD	3,000	13	0	0	0	8	6	20	11	3	1	62	0.09%	\$7,000	0	0	0
21333	CURLEY CREEK VFD	850	0	0	0	0	0	0	0	0	0	0	0	0.00%	\$0	0	0	0
21344	HALL MOUNTAIN VOL FIRE ASSN	1,200	0	0	0	0	0	0	0	0	0	0	0	0.00%	\$0	0	0	0
21315	MOYIE SPRINGS FD	656	0	0	0	0	0	0	0	0	0	0	0	0.00%	\$0	0	0	0
21341	NORTH BENCH FIRE DIST	1,100	17	0	9	9	5	7	2	0	1	50	0.07%	\$326,300	0	0	0	0
21348	PARADISE VALLEY FD	3,500	5	0	0	2	5	0	0	0	0	12	0.02%	\$0	0	0	0	0
21346	SOUTH BOUNDARY FPD	2,500	32	0	0	24	2	11	2	3	0	74	0.10%	\$0	0	0	0	0
	TOTALS	12,806	67	0	9	41	15	43	15	6	2	198	0.28%	\$333,300	0	0	0	0
BUTTE COUNTY																		
23316	ARCO FD	1,029	8	0	8	3	0	1	0	0	0	0	20	0.03%	\$212,500	0	0	0
23341	LOST RIVER FPD	500	20	0	0	0	1	0	0	0	1	22	0.03%	\$186,500	0	0	0	0
	TOTALS	1,529	28	0	8	3	1	1	0	0	1	42	0.06%	399,000	0	0	0	0
CAMAS COUNTY																		
25301	CAMAS COUNTY/FAIRFIELD FD	800	0	0	0	0	0	0	0	0	0	0	0	0.00%	\$0	0	0	0
25340	WEST MAGIC FIRE DIST	120	0	0	0	0	0	0	0	0	0	0	0	0.00%	\$0	0	0	0
	TOTALS	920	0	0	0	0	0	0	0	0	0	0	0	0.00%	\$0	0	0	0
CANYON COUNTY																		
27211	CALDWELL CITY FPD	33,000	148	1	1,397	41	131	375	185	0	4	2	2,284	3.21%	\$746,990	0	2	0
27246	CALDWELL RURAL FIRE DIST	10,000	139	0	324	9	34	194	53	0	2	755	1.06%	\$756,010	0	3	0	0
27344	MELBA RURAL FPD	3,000	49	0	14	3	9	6	2	0	0	83	0.12%	\$0	0	0	0	0
27336	MIDDLETON FIRE RESCUE	13,500	148	1	385	11	35	114	20	0	1	717	1.01%	\$246,185	0	2	0	1
27101	NAMPA CITY FD	82,000	282	7	2,880	116	369	1,256	364	0	4	5,278	7.42%	\$1,496,900	0	5	2	5
27309	NOTUS FD	500	0	0	0	0	0	0	0	0	0	0	0	0.00%	\$0	0	0	0
27338	PARMA FD	4,000	0	0	0	0	0	0	0	0	0	0	0	0.00%	\$0	0	0	0
27109	SOUTHWEST HAZ MAT REGIONAL TEAM	0	0	0	0	8	0	0	0	0	0	8	0.01%	\$0	0	0	0	0
27339	UPPER DEER FLAT FD	2,250	0	0	0	0	0	0	0	0	0	0	0	0.00%	\$0	0	0	0
27307	WILDER RURAL FPD	1,500	58	1	111	7	5	19	1	1	0	202	0.28%	\$225,850	0	0	1	4
	TOTALS	149,750	824	10	5,111	195	583	1,964	625	5	10	9,327	13.11%	\$3,471,935	0	12	3	10
CARIBOU COUNTY																		
29306	BANCROFT FD	400	4	0	0	0	1	0	0	1	0	0	6	0.01%	\$0	0	0	0
29305	CARIBOU COUNTY FD	2,700	0	0	0	0	0	0	0	0	0	0	0	0.00%	\$0	0	0	0
29309	GRACE FD	100	0	0	0	0	0	0	0	0	0	0	0	0.00%	\$0	0	0	0
29301	SODA SPRINGS FD	2,300	9	0	1	3	3	1	2	0	0	19	0.03%	\$50,500	0	0	0	0
	TOTALS	5,500	13	0	1	4	3	1	3	0	0	25	0.04%	\$50,500	0	0	0	0

FDID	DEPARTMENT NAME	POPULATION PROTECTED	FIRE	EXPLOSIONS	EMS	HAZARDOUS CONDITION	SERVICE CALL	GOOD INTENT CALL	FALSE ALARM	NATURAL DISASTER	OTHER	TOTALS	PERCENT OF TOTAL	\$ LOSS	FIRE SVC FATALITY	FIRE SVC INJURY	CIVILIAN FATALITY	CIVILIAN INJURY	
CASSIA COUNTY																			
31343	ACE FIRE PROTECTION ASSN UNIT	500	0	0	0	0	0	0	0	0	0	0	0	\$0	0	0	0	0	0
31342	ALBION FPD	305	0	0	0	0	0	0	0	0	0	0	0	\$0	0	0	0	0	0
31201	BURLEY CITY FD	20,000	104	2	455	9	15	33	70	0	0	688	0.97%	\$443,830	0	0	0	0	2
31334	DECLO FD	338	0	0	0	0	0	0	0	0	0	0	0	\$0	0	0	0	0	0
31340	OAKLEY FPD	1,400	16	0	5	1	1	5	2	0	0	30	0.04%	\$141,450	0	0	0	0	0
31338	RAFT RIVER FPD	500	18	0	1	0	1	0	1	0	0	20	0.03%	\$9,000	0	0	0	0	0
	TOTALS	23,043	138	2	460	11	16	39	72	0	0	738	1.04%	\$594,280	0	0	0	0	2
CLARK COUNTY																			
33329	DUBOIS CITY FD	1,000	0	0	0	0	0	0	0	0	0	0	0	\$0	0	0	0	0	0
	TOTALS	1,000	0	0	0	0	0	0	0	0	0	0	0.00%	\$0	0	0	0	0	0
CLEARWATER COUNTY																			
88172	CLEARWATER POTLATCH TPA	5,000	111	0	0	0	0	0	0	0	0	111	0.16%	\$93,981	0	0	0	0	0
35301	ELK RIVER FD	156	0	0	0	0	0	0	0	0	0	0	0.00%	\$0	0	0	0	0	0
35341	EVERGREEN RURAL FIRE DIST	350	2	0	0	0	0	0	0	0	0	2	0.00%	\$0	0	0	0	0	0
35330	GRANGEMONT VOL FIRE DIST	170	0	0	0	0	0	0	0	0	0	0	0.00%	\$0	0	0	0	0	0
35340	GREER RURAL FPD	50	0	0	0	0	0	0	0	0	0	0	0.00%	\$0	0	0	0	0	0
35303	OROFINO FD	3,247	38	0	69	2	7	14	17	0	0	147	0.21%	\$198,200	0	0	0	0	3
35309	PIERCE VFD	700	3	0	0	2	0	0	0	0	0	6	0.01%	\$9,500	0	0	0	0	0
35338	SUNNYSIDE RURAL FPD	1,000	12	0	0	0	0	4	0	0	1	17	0.02%	\$80,000	0	0	0	0	0
35305	TWIN RIDGE RURAL FD	500	3	0	0	0	0	0	0	0	0	3	0.00%	\$0	0	0	0	0	0
35344	UPPER FORDS CREEK RURAL FD	200	0	0	0	0	0	0	0	0	0	0	0.00%	\$0	0	0	0	0	0
35312	WEIPPE FD	416	0	0	0	0	0	0	0	0	0	0	0.00%	\$0	0	0	0	0	0
	TOTALS	11,789	169	0	69	4	7	19	17	0	1	286	0.40%	\$381,681	0	0	0	0	3
CUSTER COUNTY																			
	CHALLIS VFD	0	1	0	0	0	0	0	0	0	0	0	0.00%	\$0	0	0	0	0	0
37315	CLAYTON FD	0	0	0	0	0	0	0	0	0	0	0	0.00%	\$0	0	0	0	0	0
37305	MACKAY FD	566	15	0	2	3	0	1	1	1	0	22	0.03%	\$0	0	0	0	0	0
37334	NORTH CUSTER FD	2,000	7	0	38	1	2	0	0	0	0	48	0.07%	\$0	0	0	0	0	0
37301	SAWTOOTH VALLEY RURAL FD	500	0	0	0	0	0	0	0	0	0	0	0.00%	\$0	0	0	0	0	0
37354	SOUTH CUSTER RURAL FPD	1,400	12	0	2	2	0	1	1	1	0	18	0.03%	\$12,000	0	0	0	0	0
	TOTALS	4,466	35	0	42	6	2	2	2	2	0	89	0.13%	\$12,000	0	0	0	0	0
ELMORE COUNTY																			
39338	ATLANTA RURAL FD	36	0	0	0	0	0	0	0	0	0	0	0.00%	\$0	0	0	0	0	0
39303	GLENN'S FERRY FD	1,611	5	0	0	0	0	0	2	0	0	7	0.01%	\$0	0	0	0	0	0
39336	KING HILL FPD	28	0	8	0	2	0	5	4	0	0	47	0.07%	\$320,000	0	0	0	0	0
39334	MOUNTAIN HOME RURAL VFD	14,000	60	0	1	0	5	5	0	1	0	77	0.11%	\$183,350	0	0	0	0	0
39301	MOUNTAIN HOME VFD	4,000	26	3	0	2	4	6	20	1	0	62	0.09%	\$118,550	0	0	0	0	0
39309	OASIS VFD	100	5	0	0	1	0	1	0	0	0	7	0.01%	\$0	0	0	0	0	0
	TOTALS	19,747	124	3	9	5	9	17	31	1	1	200	0.28%	\$621,900	0	0	0	0	0
FRANKLIN COUNTY																			
41301	FRANKLIN COUNTY FIRE DIST/PRESTON FD	12,000	40	2	37	10	16	16	5	0	0	126	0.18%	\$683,450	0	4	0	0	1
	TOTALS	12,000	40	2	37	10	16	16	5	0	0	126	0.18%	\$683,450	0	4	0	0	1

FDID	DEPARTMENT NAME	POPULATION PROTECTED	FIRE	EXPLOSIONS	EMS	HAZARDOUS CONDITION	SERVICE CALL	GOOD INTENT CALL	FALSE ALARM	NATURAL DISASTER	OTHER	TOTALS	PERCENT OF TOTAL	\$ LOSS	FIRE SVC FATALITY	FIRE SVC INJURY	CIVILIAN FATALITY	CIVILIAN INJURY	
FREMONT COUNTY																			
43334	ISLAND PARK FPD	215	0	0	0	0	0	0	0	0	0	0	0.00%	\$0	0	0	0	0	
43336	NORTH FREMONT FPD	3,000	0	0	0	0	0	0	0	0	0	0	0.00%	\$0	0	0	0	0	
43312	ST. ANTHONY VFD	5,432	0	0	0	0	0	0	0	0	0	0	0.00%	\$0	0	0	0	0	
	TOTALS	8,647	0	0	0	0	0	0	0	0	0	0	0.00%	\$0	0	0	0	0	
GEM COUNTY																			
45301	EMMETT FD	7,000	35	0	1	28	4	9	19	0	0	96	0.13%	\$831,600	0	0	0	0	
45334	GEM COUNTY FPD #1	10,000	0	0	0	0	0	0	0	0	0	0	0.00%	\$0	0	0	0	0	
45339	GEM COUNTY FPD #2	1,500	16	0	1	0	1	4	0	1	0	23	0.03%	\$2,133,250	0	0	0	0	
	TOTALS	18,500	51	0	2	28	5	13	19	1	0	119	0.17%	\$2,964,850	0	0	0	0	
GOODING COUNTY																			
47341	BLISS RURAL FD	400	37	1	55	0	2	1	0	0	0	2	0.14%	\$0	0	0	0	0	
47301	GOODING FD	6,000	74	0	81	19	16	29	17	2	0	238	0.33%	\$366,410	0	1	0	2	
47323	HAGERMAN FPD	1,800	28	1	23	8	8	19	3	0	2	92	0.13%	\$15,100	0	0	0	0	
47335	WENDELL RFD/WENDELL CITY FD	7,000	94	1	51	33	10	37	16	0	0	242	0.34%	\$601,600	0	0	0	0	
	TOTALS	15,200	233	3	210	60	36	86	36	2	4	670	0.94%	\$983,110	0	1	0	2	
IDAHO COUNTY																			
49352	BPC VOL RFD, INC.	700	11	0	0	0	0	0	0	1	0	13	0.02%	\$0	0	0	0	0	
49340	CARROT RIDGE VOL FIRE DIST	300	0	0	0	0	0	0	0	0	0	0	0.00%	\$0	0	0	0	0	
49310	COTTONWOOD CITY FD	950	10	0	5	0	1	0	1	0	0	17	0.02%	\$0	0	0	0	1	
49335	COTTONWOOD RURAL FD	650	14	0	0	0	0	1	1	0	0	16	0.02%	\$0	0	0	0	0	
49316	ELK CITY VFD	400	0	0	0	0	0	0	0	0	0	0	0.00%	\$0	0	0	0	0	
49327	FERDINAND RURAL/CITY FD	150	0	0	0	0	0	0	0	0	0	0	0.00%	\$0	0	0	0	0	
49375	GLENWOOD/CARIBEL VOL FIRE DIST	0	0	0	0	0	0	0	0	0	0	0	0.00%	\$0	0	0	0	0	
49308	GRANGEVILLE CITY FD	3,500	15	0	0	3	1	0	9	0	0	28	0.04%	\$33,600	0	0	0	0	
49334	GRANGEVILLE RURAL FD	0	0	0	0	0	0	0	0	0	0	18	0.03%	\$366,000	0	0	0	0	
49362	HARPSTER VFD	515	0	0	0	0	0	0	0	0	0	0	0.00%	\$0	0	0	0	0	
49330	KOOSKIA FD	3,000	15	0	0	2	0	1	0	0	0	18	0.03%	\$227,100	0	0	0	0	
49336	RIDGERUNNER FD	750	6	0	0	0	0	1	0	0	0	7	0.01%	\$0	0	0	0	3	
49350	RIGGINS CITY FD	440	2	0	0	0	0	0	0	0	0	2	0.00%	\$0	0	0	0	0	
49338	SALMON RIVER RURAL FIRE DIST	700	27	0	0	4	0	2	0	0	0	33	0.05%	\$1,384,338	0	0	0	0	
49370	SESECH MEADOWS FIRE DIST	100	0	0	0	0	0	0	0	0	0	0	0.00%	\$0	0	0	0	0	
49329	STITES FD	500	2	0	0	0	0	0	0	0	0	2	0.00%	\$0	0	0	0	0	
49311	WHITEBIRD FD	106	1	0	0	0	0	0	0	0	0	1	0.00%	\$0	0	0	0	0	
	TOTALS	12,761	116	0	5	9	2	4	18	0	1	155	0.22%	\$2,011,038	0	0	0	0	
JEFFERSON COUNTY																			
51334	CENTRAL FIRE DIST	20,000	103	0	1	13	1	18	7	0	0	146	0.21%	\$3,177,650	0	1	0	0	
51337	HAMER FPD	86	0	0	0	0	0	0	0	0	0	0	0.00%	\$0	0	0	0	0	
51314	ROBERTS FD	647	0	0	0	0	0	0	0	0	0	0	0.00%	\$0	0	0	0	0	
51340	WEST JEFFERSON FIRE CONTROL DIST	1,200	0	0	0	0	0	0	0	0	0	0	0.00%	\$0	0	0	0	0	
	TOTALS	21,933	103	0	1	13	1	18	7	0	3	146	0.21%	\$3,177,650	0	1	0	0	

FDID	DEPARTMENT NAME	POPULATION PROTECTED	FIRE	EXPLOSIONS	EMS	HAZARDOUS CONDITION	SERVICE CALL	GOOD INTENT CALL	FALSE ALARM	NATURAL DISASTER	OTHER	TOTALS			PERCENT OF TOTAL	\$ LOSS		FIRE SVC INJURY	FIRE SVC FATALITY	CIVILIAN INJURY	CIVILIAN FATALITY
												HAZARDOUS CONDITION	SERVICE CALL	GOOD INTENT CALL		FALSE ALARM	NATURAL DISASTER				
JEROME COUNTY																					
53353	FIRST SEGREGATION FIRE DIST	2,350	25	1	39	13	1	30	6	1	0	0	116	0.16%	\$181,475	0	0	0	0	0	0
53201	JEROME CITY FD	8,500	62	0	770	49	18	77	48	0	0	0	1,024	1.44%	\$376,350	0	0	0	0	0	0
53333	JEROME RURAL FIRE DIST #1	8,000	0	0	0	0	0	0	0	0	0	0	0	0.00%	\$0	0	0	0	0	0	0
TOTALS		18,850	87	1	809	62	19	107	54	1	0	0	1,140	1.60%	\$557,825	0	0	0	0	0	0
KOOTENAI COUNTY																					
55201	COEUR D'ALENE FD	42,500	211	9	4,347	189	275	425	318	5	7	5,786	8.13%	\$1,319,160	0	2	4	1	0	0	0
55360	EAST SIDE FPD	2,000	4	0	12	19	8	17	11	0	2	74	0.10%	\$0	0	0	0	0	0	0	0
55346	HAUSER LAKE FPD	2,500	38	0	88	3	8	15	6	3	2	163	0.23%	\$1,500	0	0	0	0	0	0	0
55234	KOOTENAI CO FIRE & RESCUE	39,000	223	3	2,421	111	224	552	131	19	5	3,689	5.18%	\$2,352,195	0	6	0	8	0	0	0
	KOOTENAI VALLEY FOREST PD	0	0	0	0	0	0	0	0	0	0	0	0	0.00%	\$0	0	0	0	0	0	0
55354	MICA-KIDD ISLAND FPD	1,900	9	0	54	11	18	28	1	0	0	121	0.17%	\$1,500	0	0	0	0	0	0	0
55342	NORTHERN LAKES FPD	28,000	148	0	2,037	115	179	760	109	2	4	3,354	4.71%	\$94,200	0	7	0	0	0	0	0
55209	REGION #1 HAZMAT TEAM	0	0	0	0	5	4	0	0	0	0	9	0.01%	\$0	0	0	0	0	0	0	0
55338	SPIRIT LAKE FPD	7,250	84	1	383	33	74	36	20	0	4	635	0.89%	\$265,950	0	0	0	0	0	0	0
55352	TIMBERLAKE FPD	6,500	24	0	114	15	28	44	14	0	0	239	0.34%	\$318,400	0	0	0	0	0	0	0
55336	WORLEY FPD	2,500	36	0	55	12	13	30	9	0	0	155	0.22%	\$0	0	0	0	2	0	0	0
TOTALS		132,150	777	13	9,511	513	832	1,907	619	29	24	14,225	19.99%	\$4,352,905	0	15	6	9	0	0	0
LATAH COUNTY																					
57309	BOVILL FD	365	0	0	0	0	0	0	0	0	0	0	0	0.00%	\$0	0	0	0	0	0	0
57342	DEARY RURAL FIRE DIST	2,000	16	0	89	1	1	3	5	0	0	115	0.16%	\$229,500	0	0	0	0	0	0	0
57338	GENESEE CITY / RURAL FD	2,000	12	0	18	2	0	2	2	1	0	37	0.05%	\$461,000	0	0	0	0	0	0	0
57307	JULIAETTA VFD	610	0	0	0	0	0	0	0	0	0	0	0	0.00%	\$0	0	0	0	0	0	0
57306	KENDRICK VFD	400	0	0	0	0	0	0	0	0	0	0	0	0.00%	\$0	0	0	0	0	0	0
57301	MOSCOW CITY FD	22,000	72	5	467	81	10	35	168	6	0	844	1.19%	\$367,010	0	0	0	0	0	0	0
57334	MOSCOW RURAL DISTRICT	10,000	31	0	83	6	4	16	8	2	0	150	0.21%	\$440,460	0	0	0	0	0	0	0
57336	POTLATCH RURAL FPD	791	0	0	0	0	0	0	0	0	0	0	0	0.00%	\$0	0	0	0	0	0	0
57340	TROY VFD	2,000	5	0	9	0	1	2	2	0	5	24	0.03%	\$0	0	0	0	0	0	0	0
TOTALS		40,166	136	5	666	90	16	58	185	9	5	1,170	1.64%	\$1,497,970	0	0	0	0	0	0	0
LEMHI COUNTY																					
59310	ELK BEND FIRE DIST	600	0	0	0	0	0	0	0	0	0	0	0	0.00%	\$0	0	0	0	0	0	0
59304	GIBBONSVILLE VFD	200	0	0	0	0	0	0	0	0	0	0	0	0.00%	\$0	0	0	0	0	0	0
59315	LEADORE FD	1,000	0	0	0	0	0	0	0	0	0	0	0	0.00%	\$0	0	0	0	0	0	0
59301	LEMHI COUNTY FPD	4,500	0	0	0	0	0	0	0	0	0	0	0	0.00%	\$0	0	0	0	0	0	0
59333	NORTH FORK FIRE DIST	250	0	0	0	0	0	0	0	0	0	0	0	0.00%	\$0	0	0	0	0	0	0
59344	PAHSIMEROI VFD	50	0	0	0	0	0	0	0	0	0	0	0	0.00%	\$0	0	0	0	0	0	0
59330	SALMON CITY/LEMHI COUNTY FPD #1	3,100	0	0	0	0	0	0	0	0	0	0	0	0.00%	\$0	0	0	0	0	0	0
TOTALS		9,700	0	0	0	0	0	0	0	0	0	0	0	0.00%	\$0	0	0	0	0	0	0
LEWIS COUNTY																					
61304	CRAIGMONT FD	500	0	0	0	0	0	0	0	0	0	0	0	0.00%	\$0	0	0	0	0	0	0
61334	KAMIAH CITY & RURAL FPD	4,000	0	0	0	0	0	0	0	0	0	0	0	0.00%	\$0	0	0	0	0	0	0
61310	NEZPERCE FD	523	0	0	0	0	0	0	0	0	0	0	0	0.00%	\$0	0	0	0	0	0	0
61306	REUBENS FD	72	0	0	0	0	0	0	0	0	0	0	0	0.00%	\$0	0	0	0	0	0	0
61308	WINCHESTER VFD	400	0	0	0	0	0	0	0	0	0	0	0	0.00%	\$0	0	0	0	0	0	0
TOTALS		5,495	0	0	0	0	0	0	0	0	0	0	0	0.00%	\$0	0	0	0	0	0	0

FDID	DEPARTMENT NAME	POPULATION PROTECTED	FIRE	EXPLOSIONS	EMS	HAZARDOUS CONDITION	SERVICE CALL	GOOD INTENT CALL	FALSE ALARM	NATURAL DISASTER	OTHER	TOTALS	PERCENT OF TOTAL	\$ LOSS	FIRE SVC FATALITY	FIRE SVC INJURY	CIVILIAN FATALITY	CIVILIAN INJURY	
LINCOLN COUNTY																			
63303	DIETRICH RURAL FD	500	14	0	6	1	6	12	1	0	0	0	40	0.06%	\$0	0	0	0	0
63308	RICHFIELD FPD	420	0	0	0	0	0	0	0	0	0	0	0	0.00%	\$0	0	0	0	0
63301	SHOSHONE CITY	2,200	0	0	0	0	0	0	0	0	0	0	0	0.00%	\$0	0	0	0	0
	TOTALS	3,120	14	0	6	1	6	12	1	0	0	0	40	0.06%	\$0	0	0	0	0
MADISON COUNTY																			
65234	REXBURG-MADISON CO EMERG SVCS	40,000	134	0	72	59	17	85	69	0	0	3	439	0.62%	\$528,520	0	0	3	3
	TOTALS	40,000	134	0	72	59	17	85	69	0	0	3	439	0.62%	\$528,520	0	0	3	3
MINIDOKA COUNTY																			
67337	EAST END FPD	0	0	0	0	0	0	0	0	0	0	0	0	0.00%	\$0	0	0	0	0
67336	MINIDOKA COUNTY FPD	10,000	126	0	158	13	2	27	13	0	0	0	339	0.48%	\$24,000	0	0	0	0
67335	NORTHSIDE FD	0	0	0	0	0	0	0	0	0	0	0	0	0.00%	\$0	0	0	0	0
67301	RUPERT CITY FIRE & RESCUE	5,000	11	0	11	7	2	5	12	0	0	0	48	0.07%	\$110,700	0	0	0	0
67334	WEST END FPD	8,800	62	2	139	9	10	13	9	0	0	0	244	0.34%	\$1,158,000	0	0	0	0
	TOTALS	23,800	199	2	308	29	14	45	34	0	0	0	631	0.89%	\$1,292,700	0	0	0	0
NEZ PERCE COUNTY																			
69333	BIG CANYON FIRE DIST	400	0	0	0	0	0	0	0	0	0	0	0	0.00%	\$0	0	0	0	0
69320	CLEARWATER FIRE SVC	3	0	0	0	0	0	0	0	0	0	0	0	0.00%	\$0	0	0	0	0
69311	CULDESAC VFD	350	0	0	0	0	0	0	0	0	0	0	0	0.00%	\$0	0	0	0	0
69306	LAPWAI FD	1,200	0	0	0	0	0	0	0	0	0	0	0	0.00%	\$0	0	0	0	0
69201	LEWISTON FD	31,000	131	7	4	74	38	51	183	3	2	493	0.69%	\$1,239,985	0	0	1	3	0
69209	LEWISTON HAZ MAT TEAM	0	0	0	0	2	0	0	0	0	0	0	2	0.00%	\$0	0	0	0	0
69344	NEZ PERCE CO FD	4,000	0	0	0	1	0	0	0	0	0	1	0.00%	\$0	0	0	0	0	0
69220	POTLATCH CORP FIRE & RESCUE	1,800	110	0	2	2	19	0	3	0	0	4	140	0.20%	\$1,093,000	0	0	0	1
	TOTALS	38,753	241	7	6	79	57	51	186	3	6	636	0.90%	\$2,332,985	0	0	1	4	0
ONEIDA COUNTY																			
71301	ONEIDA COUNTY VFD	3,000	0	0	0	0	0	0	0	0	0	0	0	0.00%	\$0	0	0	0	0
	TOTALS	3,000	0	0	0	0	0	0	0	0	0	0	0	0.00%	\$0	0	0	0	0
OWYHEE COUNTY																			
73340	BRUNEAU FPD	550	0	0	0	0	0	0	0	0	0	0	0	0.00%	\$0	0	0	0	0
73338	GRAND VIEW FPD	2,400	5	0	0	0	0	0	0	0	0	5	0.01%	\$45,800	0	0	0	0	0
73334	HOMEDALE FD	6,000	0	0	0	0	0	0	0	0	0	0	0	0.00%	\$0	0	0	0	0
73336	MARSING CITY/RURAL FPD	20,000	55	1	1	4	2	2	0	0	0	66	0.09%	\$266,695	0	0	0	0	0
73342	MURPHY-REYNOLDS-WILSON FPD	200	2	0	0	0	0	0	0	0	0	2	0.00%	\$0	0	0	0	0	0
73320	SILVER CITY FIRE & RESCUE, INC.	55	0	0	3	0	0	0	0	0	0	3	0.00%	\$0	0	0	0	0	0
	TOTALS	29,205	62	1	4	1	4	2	2	2	0	76	0.11%	\$312,495	0	0	0	0	0
PAYETTE COUNTY																			
75302	FRUITLAND FD	4,406	47	1	2	11	1	4	5	0	0	71	0.10%	\$9,000	0	0	0	0	0
75303	NEW PLYMOUTH FD	2,500	58	6	2	5	24	28	3	0	0	126	0.18%	\$493,800	0	0	1	0	0
75301	PAYETTE CITY FD & RURAL FPD	13,100	102	0	7	34	12	17	18	1	2	193	0.27%	\$651,650	0	0	1	6	0
	TOTALS	78,416	207	7	11	50	37	49	26	1	2	390	0.55%	\$1,154,450	0	0	2	6	0

FDID	DEPARTMENT NAME	POPULATION PROTECTED	FIRE	EXPLOSIONS	EMS	HAZARDOUS CONDITION	SERVICE CALL	GOOD INTENT CALL	FALSE ALARM	NATURAL DISASTER	OTHER	TOTALS	PERCENT OF TOTAL	\$ LOSS	FIRE SVC FATALITY	FIRE SVC INJURY	CIVILIAN FATALITY	CIVILIAN INJURY	
POWER COUNTY																			
77302	AMERICAN FALLS CITY FD	6,200	0	0	0	0	0	0	0	0	0	0	0.00%	\$0	0	0	0	0	
77330	AMERICAN FALLS RURAL FPD	50	0	0	0	0	0	0	0	0	0	0	0.00%	\$0	0	0	0	0	
77306	ROCKLAND RURAL FIRE DIST	3,316	0	0	0	0	0	0	0	0	0	0	0.00%	\$0	0	0	0	0	
	TOTALS	9,566	0	0	0	0	0	0	0	0	0	0	0.00%	\$0	0	0	0	0	
SHOSHONE COUNTY																			
79316	MULLAN-SHOSHONE CO FPD #3	800	0	0	0	0	0	0	0	0	0	0	0.00%	\$0	0	0	0	0	
79326	OSBURN/WALLACE-SHOSHONE CO FPD #1	4,000	25	0	324	22	12	32	10	0	0	425	0.60%	\$149,000	0	3	1	3	
79305	PRICHARD/MURRAY VOL FIRE DIST	700	0	0	0	0	0	0	0	0	0	0	0.00%	\$0	0	0	0	0	
79234	SHOSHONE COUNTY FPD #2	8,000	84	0	457	17	43	101	32	7	8	749	1.05%	\$191,750	0	2	1	1	
79310	ST. JOE VALLEY FIRE DIST	250	0	0	0	0	0	0	0	0	0	0	0.00%	\$0	0	0	0	0	
	TOTALS	13,750	109	0	781	39	55	133	42	7	8	1,174	1.65%	\$340,750	0	3	3	4	
TETON COUNTY																			
81334	TETON COUNTY FPD	7,500	52	1	20	75	0	31	11	1	0	191	0.27%	\$259,025	0	1	0	2	
	TOTALS	7,500	52	1	20	75	0	31	11	1	0	191	0.27%	\$259,025	0	1	0	2	
TWIN FALLS COUNTY																			
83207	BUHL RURAL FPD	10,000	102	1	19	30	5	25	32	0	0	214	0.30%	\$223,747	0	0	0	1	
83340	CASTLEFORD FD	277	0	0	0	0	0	0	0	0	0	0	0.00%	\$0	0	0	0	0	
83338	FILER FD	2,200	39	0	24	20	7	35	7	0	0	132	0.19%	\$0	0	0	1	0	
83309	HANSEN CITY FD	900	3	0	1	2	1	1	0	0	1	9	0.01%	\$0	0	0	0	0	
83305	KIMBERLY FD	3,000	9	0	4	6	6	6	6	0	0	31	0.04%	\$171,000	0	0	0	0	
83334	ROCK CREEK RURAL FIRE DIST	3,000	54	0	12	65	4	30	7	0	0	172	0.24%	\$319,050	0	0	0	0	
83349	SALMON TRACT RURAL FPD	750	0	0	0	0	0	0	0	0	0	0	0.00%	\$0	0	0	0	0	
83101	TWIN FALLS FD	50,000	184	2	468	786	116	284	261	0	0	2,112	2.97%	\$1,870,407	0	0	0	2	
	TOTALS	70,127	391	3	528	909	133	381	313	0	12	2,670	3.75%	\$4,584,204	0	0	1	3	
VALLEY COUNTY																			
85302	CASCADE FD	1,010	14	0	8	2	3	4	8	0	0	41	0.06%	\$0	0	0	0	0	
85334	CASCADE RURAL FPD	2,500	24	0	247	3	17	15	4	1	0	311	0.44%	\$0	0	0	0	0	
85304	DONNELLY VFD	3,000	20	1	185	9	17	22	24	1	2	281	0.39%	\$167,500	0	0	0	0	
85340	HIGH VALLEY FIRE PROTECTION ASSN	200	0	0	0	0	0	0	0	0	0	0	0.00%	\$0	0	0	0	0	
85339	MCCALL FPD	10,000	54	0	555	43	26	35	61	0	32	806	1.13%	\$2,320,600	0	1	0	0	
85307	SO IDAHO TIMBER PROTECTIVE ASSN	0	0	0	0	0	0	0	0	0	0	0	0.00%	\$0	0	0	0	0	
85359	STIBNITE FD	35	0	0	0	0	0	0	0	0	0	0	0.00%	\$0	0	0	0	0	
	TOTALS	16,745	112	1	995	57	63	76	97	2	36	1,439	2.02%	\$2,486,100	0	1	0	0	
WASHINGTON COUNTY																			
87330	CAMBRIDGE FPD	1,600	0	0	0	0	0	0	0	0	0	0	0.00%	\$0	0	0	0	0	
87336	MIDVALE FPD	1,000	23	0	1	0	1	4	3	1	0	33	0.05%	\$0	0	0	0	0	
87334	WEISER AREA RURAL FPD	5,500	54	1	0	13	1	9	6	4	1	89	0.13%	\$51,000	0	0	0	0	
87301	WEISER CITY FIRE & RESCUE	4,200	51	1	5	18	8	5	19	0	2	109	0.15%	\$265,580	0	0	0	0	
	TOTALS	12,300	128	2	6	31	10	18	28	5	3	231	0.32%	\$316,580	0	0	0	0	
	STATE OF IDAHO TOTALS	1,538,090	7,272	131	41,543	3,716	3,886	8,646	5,639	127	191	71,151	100.00%	\$50,046,521	0	45	26	66	

Glossary of Terms and Abbreviations

\$Loss - Combined estimated property and content dollar loss as reported by reporting agencies.

Alarm - Any notification made to the fire department that a situation exists or may exist requiring a response.

Arson - The crime of maliciously and intentionally or recklessly starting a fire or causing an explosion.

Automatic Extinguishing Systems (AES) - A device or system providing an emergency fire extinguishing function without the necessity of human intervention, typically a water spray.

Building Fires - Any fire involving a structure.

Casualty - A person who is injured or killed at the scene of a fire or other reported incident

Cause - The circumstances or conditions that brought about or resulted in a fire or explosion incident, damage to property resulting from the fire or explosion incident, or bodily injury or loss of life resulting from the fire or explosion incident.

Civilian Fire Casualty - Any non-fire service person injured or killed at the scene of a fire.

Confined Fire - Fire where the flame does not extend beyond a combustible container; such as cooking vessels, chimneys or flues, trash containers, etc.

Contained Fire - Fire spread that is reasonably expected to remain in check under prevailing conditions.

Crop - Cultivated vegetation; such as grains, trees, orchard, nursery stalk, etc.

EMS - Emergency Medical Service.

Fatality - An injury that is fatal or becomes fatal within one year of the incident.

Hazardous Materials - Any material that is air-reactive, corrosive, explosive, flammable gas, organic peroxide, oxidizing material, radioactive, toxic, unstable, water-reactive, or a flammable or combustible liquid; and any substance or mixture of substance that is an irritant or a strong sensitizer or generates pressure through exposure to heat, decomposition, or other means.

Incident - An event to which the reporting agency responds or should have responded An incident may have more than one response.

Incident Record - The official file on an incident.

Incident Report - A document prepared by fire department personnel about a particular incident.

Mobile Property - Includes any vehicle designed to operate normally on highway, such as automobiles, motorcycles, buses, trucks, or trailers. Other mobile properties include trains, boats, ships, aircrafts, or farm and construction vehicles.

Mutual Aid - Assistance given to or received by a fire department, whether fire or non-fire aid, by another fire department outside its normal jurisdiction.

NFIRS - National Fire Incident Reporting System.

Non-Fire Service Personnel - All persons involved with an incident who are not fire service personnel; including police, utility company employees, non-fire service medical personnel, or civilians.

Origin - The physical location where a heat source and fuel came in contact with each other.

Overpressure - A transient air pressure, such as the shock wave from an explosion that is greater than the surrounding atmospheric pressure.

Prescribed Fire - Any fire ignited by management actions to meet specific objectives. A written, approved prescribed fire plan must exist prior to ignition. The controlled application of fire to wildland fuels in either their natural or modified state under specified environmental conditions allowing the fire to be confined to a predetermined area and, at the same time, to produce the intensity of heat and rate of spread required to attain planned resource management objectives.

Property Use - The actual use of the property where the incident occurred. A building, for example, could serve as a garage or a hospital or a department store. The use of property does not define any of the other important fire-related details of a property such as access, ownership, size, internal weaknesses in fire defense, or construction.

Response Time - The length of time of time between notification of and arrival at an incident scene as reported by the responding agency.

Wildland-Urban Interface Area - The geographical area where structures and other human development meet or intermingle with wildland or vegetative fuels.

Wildland - Land in the uncultivated more or less natural state and covered by timber, woodland, brush, or grass. An area in which development is essentially nonexistent except for roads, railroads, power lines, and similar facilities.

Wildland Fire - Any involved vegetative fuel, other than prescribed fire, that occurs in wildland. A wildland fire may expose or possibly consume structures.

Fire Stations Across Idaho



Mackay Fire and Rescue and
South Custer Fire District



Indian Valley Rural Fire District



Sagle Fire District - Careywood Station



Coeur d'Alene Fire Department Station #3



Robie Creek Volunteer Fire Department



Kendrick Volunteer Fire Department

Idaho's Fire Departments Respond Every:

7.5 minutes
to an incident



1.3 hours to
an actual fire



13 minutes to a
medical call



5.5 hours to a structure fire



1.7 hours to a false alarm



9.2 hours to a vehicle fire

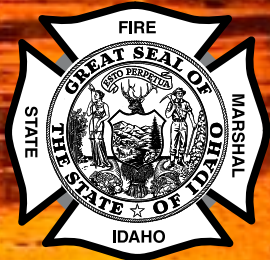


19 hours to an intentionally set fire





Idaho State Fire Marshal
700 West State Street
P. O. Box 83720
Boise, Idaho 83720-0043



A very special “thank you” to those who shared their expertise, data and pictures in the making of this report:

Idaho Fire Departments
Office of State Fire Marshal
Department of Insurance
National Fire Information Council

Cover photo of Challenger Pallet Mill Fire taken by Veronica McCabe,
Central Fire District

Costs associated with this publication are available at the office
of the Idaho State Fire Marshal. This report is available in electronic format
through the Department of Insurance website: <http://www.doi.idaho.gov>.