

A photograph of a fire burning in a snowy forest at night. The fire is bright and intense, with large flames and thick smoke. In the background, a cabin is visible, with a single window glowing. The ground is covered in snow, and there are trees and branches in the foreground. The overall scene is dramatic and captures the power of the fire.

FIRE ***in Idaho***

2007

Twenty-Fifth Annual Report

Governor
C.L. "Butch" Otter

Department of Insurance
William W. Deal, Director

Idaho State Fire Marshal
Mark Larson



Mission Statement

The State Fire Marshal's Office participates in and coordinates an integrated statewide system designed to protect human life from fire and explosions through fire prevention and the investigation of fires. The program involves fire prevention activities, arson investigations, and the operation of various statistical systems, including the Idaho Fire Incident Reporting System.

State of Idaho
DEPARTMENT OF INSURANCE

C.L. "BUTCH" OTTER
Governor

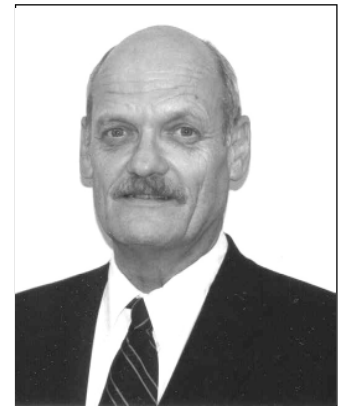
700 West State Street, 3rd Floor
P.O. Box 83720
Boise, Idaho 83720-0043
Phone (208)334-4370
FAX # (208)334-4375

WILLIAM W. DEAL
Director

MARK LARSON
State Fire Marshal

July 1, 2008

Honorable C.L. "Butch" Otter
Governor, State of Idaho
Statehouse
Boise, ID 83720



Dear Governor Otter:

This document is the twenty-fifth issue of the annual report from the office of the State Fire Marshal.

The report makes a significant departure from previous efforts, inasmuch as we have included excerpts from 2007 information compiled by the National Interagency Fire Center, the Idaho Department of Lands, and the Idaho State Fire Plan Working Group. When the information is viewed along with the statistics compiled from the local fire agencies in our state, it gives a more complete picture of the impact of fires in Idaho.

The negative impacts of uncontrolled fire - loss of life, cost of suppression, loss of homes and businesses as well as natural resources - are measurable and considerable. While it is practically impossible to measure or quantify the positive impact of preventing fire, this work must continue through individual and collaborative efforts by both government agencies and citizens across Idaho.

I wish to thank all of the fire agencies for the information submitted and my staff for preparing this report.

Respectfully submitted,

A handwritten signature in black ink that reads "Mark Larson". The signature is written in a cursive, flowing style.

Mark Larson
State Fire Marshal

Table of Contents

STATE FIRE MARSHAL DIVISION

Organizational Chart	3
Fire Prevention	4
Fire Origin and Arson Investigation	6
Idaho State Fire Marshal Classes	8
Certification and Licensing	9

INCIDENT SUMMARY STATISTICS

Summary of Statistics

Incident Summary	10
Incident Responses by Month, Day and Hour	11
Top 10 Incident Types by Incident Categories	12
Five-Year Trends	14
Fires in Idaho	16

Structure Fires

Structure Fires/Area of Origin	19
Top 10 Large Dollar Loss Structure Fire Events in Idaho	21
Idaho Structure Fires by Property Use	22
Smoke Detector Performance	24
Automatic Extinguishing Systems	25

Emergency Medical Services (EMS)

EMS Reporting Statistics	26
Patient Data	27

Civilian Fire Casualties

Civilian Casualty Statistics	28
2007 Civilian Fire Fatalities	29

Fire Service Casualties

Fire Service Injuries per 10,000 Population	30
Fire Service Casualties by Severity of Injuries	31

DEPARTMENT LISTINGS

Importance of Data Quality Control	33
Reporting Trends	34
Departments NOT Reporting in 2007	35
Reporting Departments	36

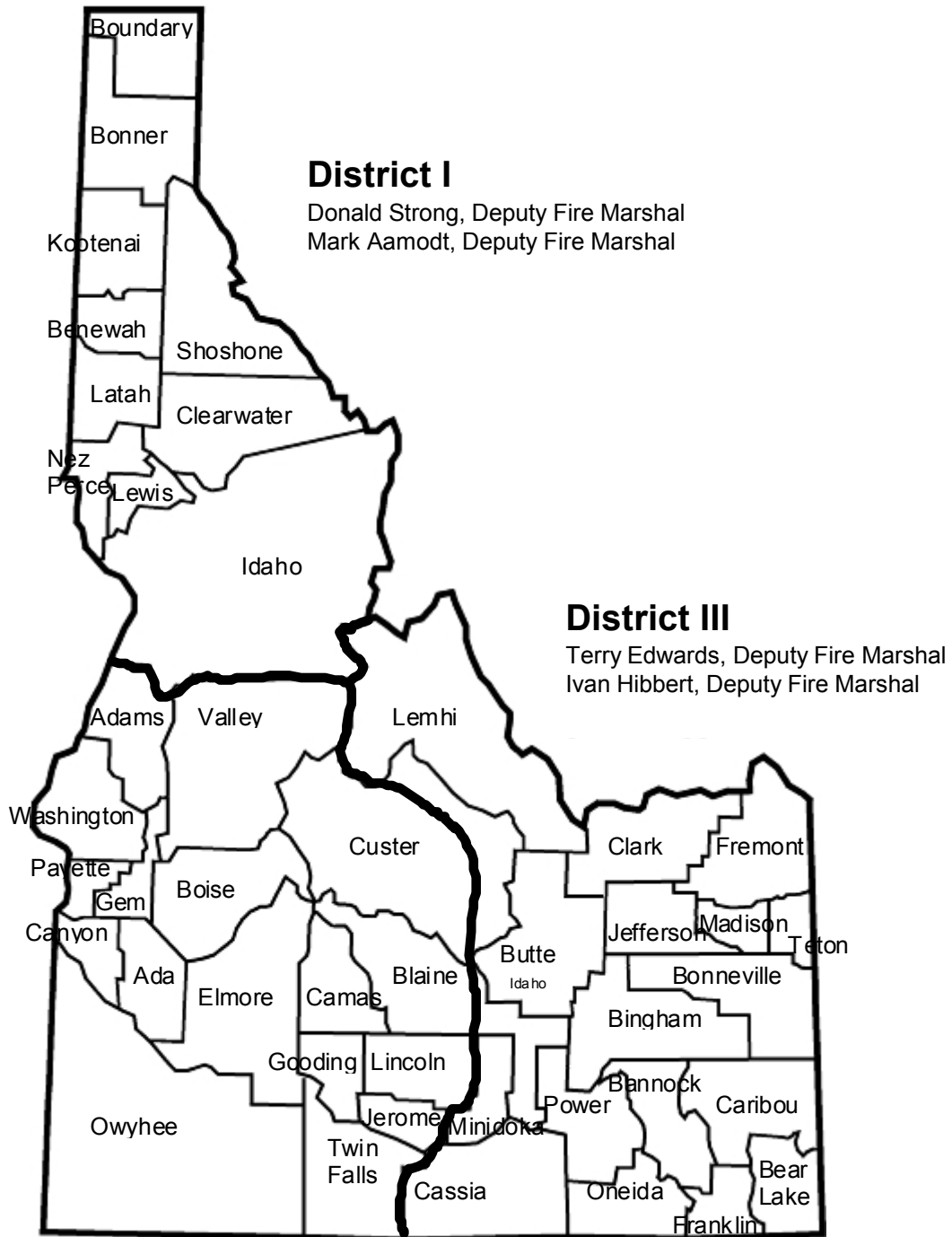
Glossary of Terms	44
-------------------------	----

Wildland Fires

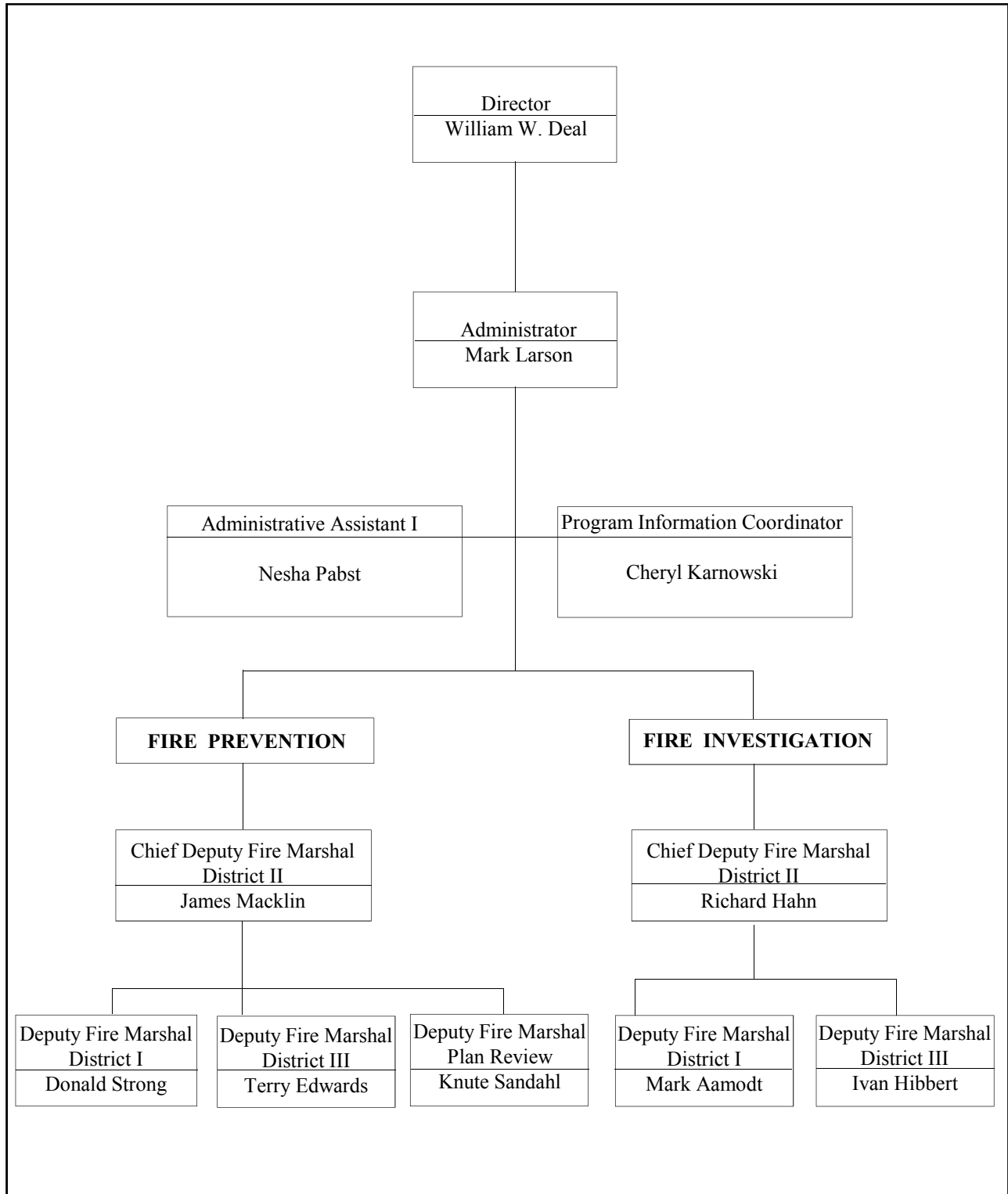
Wildland Fire Trends - Idaho vs. USA	49
2007 Idaho Fire Plan Working Group	50
Statistics from National Fire Interagency Center	59
Idaho Department of Lands 2007 Year-End Fire Report	60



State Fire Marshal Division



State Fire Marshal Organizational Chart



Fire Prevention

The primary functions of the Fire Prevention Section of the State Fire Marshal's Office are to review construction plans, fire alarm system plans and automatic sprinkler plans and to perform acceptance tests of fire alarm systems and automatic sprinkler systems for state-owned buildings, as required by statute. We also assist local jurisdictions in the same subject matter upon their request. When requested the deputies provide International Fire Code interpretations to the fire service, architects, engineers, developers and general public.

A certified fire inspector training and testing program for firefighters and fire code officials designed and presented by prevention deputies is provided for consistency with code application and interpretations statewide. Presently there are 740 certified fire inspectors throughout the state.

In 2007 a total of 664 building plans - including access, water supplies, fire alarms systems and sprinkler systems - were reviewed by staff. Also, 222 inspections - including fire prevention inspections, acceptance testing and inspections of fire alarm and automatic sprinklers systems - were completed.

District I

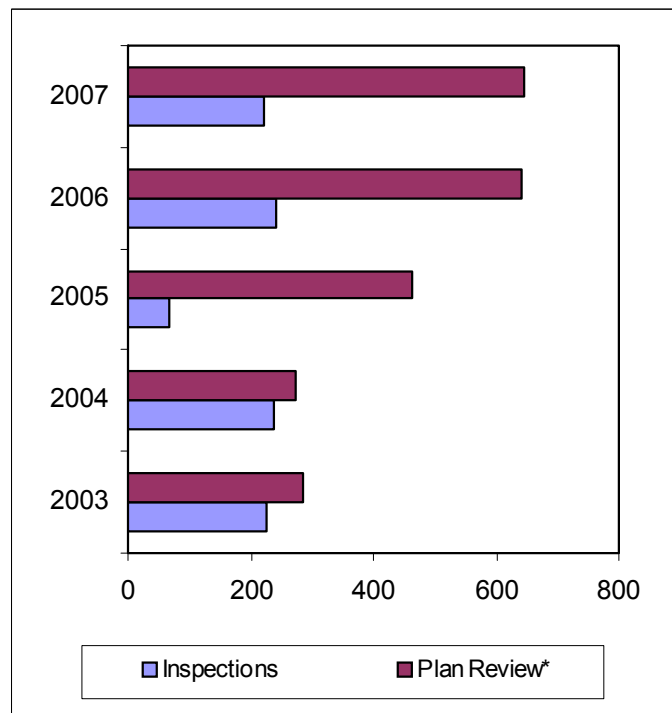
Donald Strong
(home/office)
Moscow, ID 83843
208-882-2368

District II

James Macklin
700 W. State Street, 3rd Floor
Boise, ID 83720-0043
208-334-4370

District III

Terry Edwards
1820 E 17th St, Suite 220
Idaho Falls, ID 83404
208-525-7022



*Beginning in 2005 "Plan Review" includes fire sprinkler plans.



Idaho State Capitol Building Renovation

In early 2007 another chapter turned in the pages of Idaho history. The much anticipated restoration and expansion of our State Capitol building began after years of discussion and planning. The State Fire Marshal's Office has been involved with this project since its conception before the year 2000. Because of the scope of this important endeavor, we have invested a large amount of energy in the plan review, inspection and code interpretation process.

The restoration of the Capitol has posed many challenges in the application of the fire code due to the building's age, modifications made over the last 100 years and historic value. When finished, our State Capitol, in addition to other amenities, will be equipped with a fire alarm system, a fire suppression system and additional exiting. Scheduled for completion for the 2010 legislative session, these life safety features will help ensure that legislators, employees, visitors and this vital historic landmark are protected well into the next century.

To view progress and additional information go to the Capitol Webcam on the State of Idaho home page at http://capitolcommission.idaho.gov/restoration/construction_cameras.html.



West Wing view of Idaho State Capitol during renovation and addition of underground wings started in 2007. Photos taken by Knute Sandahl, Deputy State Fire Marshal.

Interior photograph of State Capitol renovation started in 2006.



Capitol renovation includes addition of fire sprinkler system (AES).



Fire Origin and Cause Investigation

The origin and cause fire investigators in the Idaho State Fire Marshal's Office are nationally recognized certified fire investigators. The three assigned investigators have a combined experience of 82 years and serve as expert witnesses throughout the state.

The deputies provide assistance for investigation of fires with local fire and law enforcement agencies when requested. In addition to assisting with fire investigations they provide training and assistance in developing fire investigation teams within fire departments. This training enables the departments to do a thorough investigation of all their fire incidents working closely with law enforcement and the local prosecutor. The origin and cause fire investigation classes developed by the Fire Marshal's Office are POST certified for law enforcement personnel.

The Fire Marshal's Office works closely with the Department of Insurance and the insurance fraud investigators in the investigation of insurance fraud by means of arson. All insurance fraud cases involving fire incidents are reviewed and evaluated for arson prosecution.

The Attorney General's Office and the Fire Marshal's Office have a close working relationship in the prosecution of arson and fire-related criminal cases.

Assistance and technical information are also provided to county and city prosecutors in the preparation of arson and fire-related incidents.



Fire investigation tools of the trade

District I

Mark Aamodt
2005 Ironwood Parkway #143
Coeur d'Alene, ID 83814
208-769-1447

District II

Richard Hahn
700 W. State Street, 3rd Floor
Boise, ID 83720-0043
208-334-4370

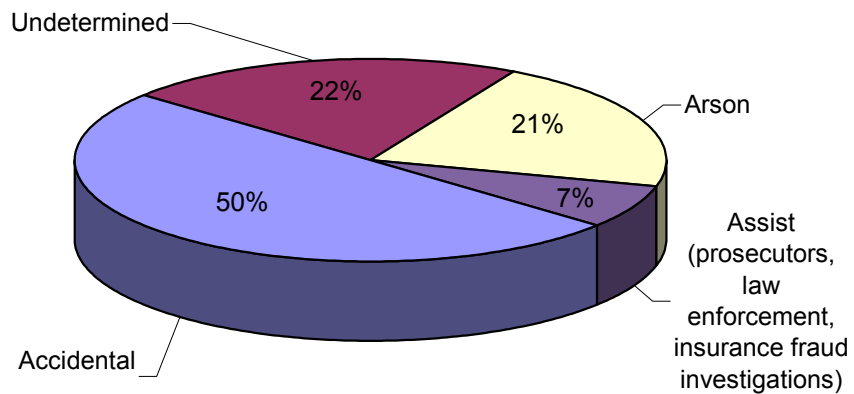
District III

Ivan Hibbert
1820 E. 17th St., Suite 220
Idaho Falls, ID 83404
208-525-7209

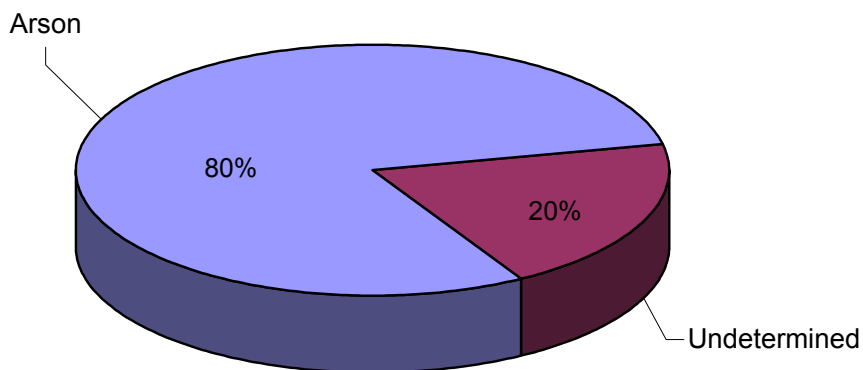


Fire Origin and Cause Investigation

Structure Fires Investigated by Idaho State Fire Marshal Staff



Vehicle Fires Investigated by Idaho State Fire Marshal Staff



Idaho State Fire Marshal Classes

International Fire Code

This course of instruction is designed to provide exposure to the contents of the International Fire Code and can be presented to fire department personnel upon request of the jurisdiction. The course is presented with the intention to provide continuity and consistency of code application throughout the state. A four-hour certification test is conducted at the end of the course.

Access and Water Supplies Code Requirements and Alternatives

This program pertains to Chapter 5 of the International Fire Code, which includes requirements for access roads and water supplies. It is designed to provide consistency with the intent of the International Fire Code and its application and interpretation throughout the state. The alternatives are based on other nationally recognized standards to meet the intent of the International Fire Code. The program is intended for fire chiefs, code officials, fire district commissioners, county commissioners, land use planners and other interested parties.

Arson Detection for the First Responder

This class provides the first responder with knowledge and awareness of possible incendiary fires.

Origin and Cause Fire Investigation

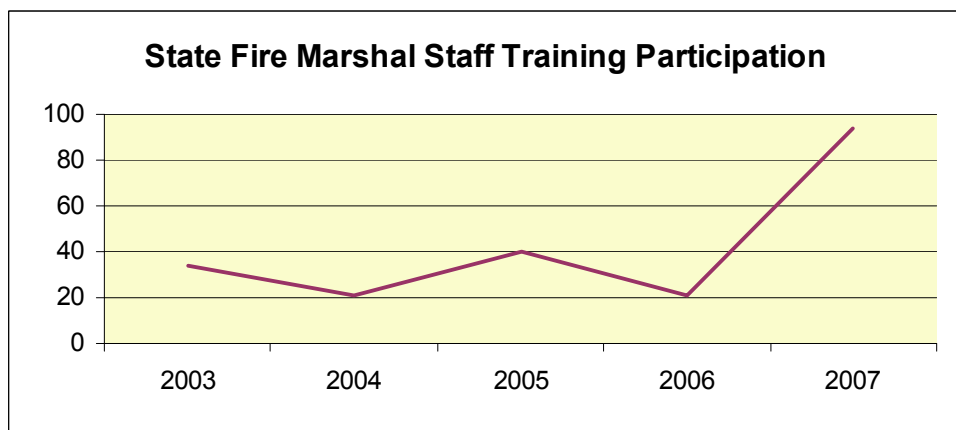
This 16-hour program is based on the National Fire Protection Association (NFPA) 921 Guide for Fire and Explosion Investigations. It provides the student with basic origin and cause fire investigation knowledge and principles.

Arson Investigation and Evidence Preservation

The objective of this program is to instruct students towards a positive approach on arson investigation and prosecution by using multi-agency investigation for a successful arson case. Law enforcement agencies, the Idaho State Police Forensic Lab and the office of the Idaho Attorney General participate with the Idaho State Fire Marshal's Office in instructing this 24-hour course.

Introduction to National Fire Incident Reporting System (NFIRS)

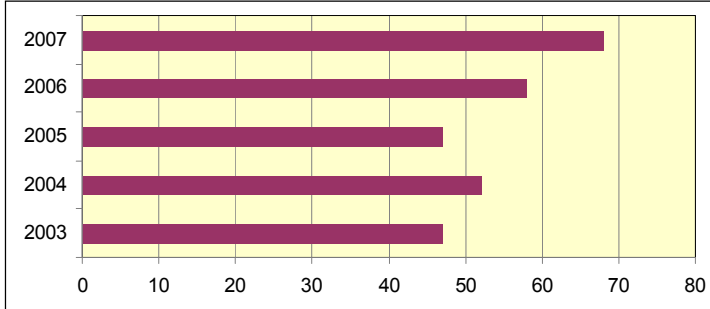
This course is designed to provide an introduction to and experience with the NFIRS 5.0 all-incident reporting system. Students will become acquainted with the purposes and benefits of incident reporting at the local, state and national levels and will receive a basic introduction to all modules and their uses.



Certification and Licensing

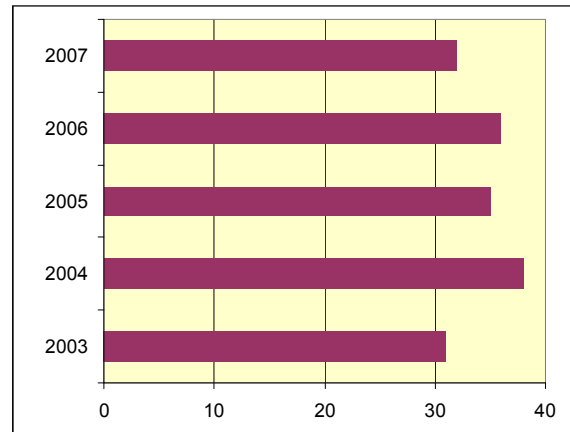
Certification and Licensing Five-Year Trend

Fire Protection Sprinkler Contractor Licenses



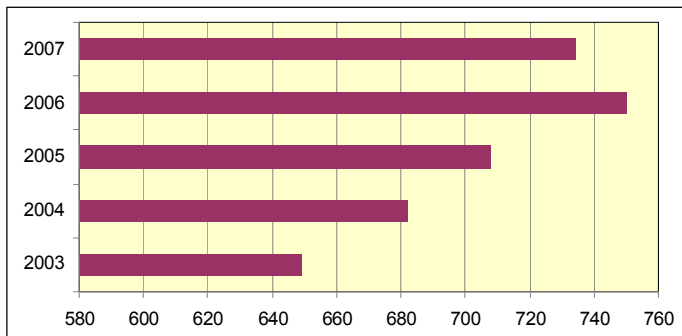
Rule 18.01.49

Fireworks Wholesale or Import Licenses



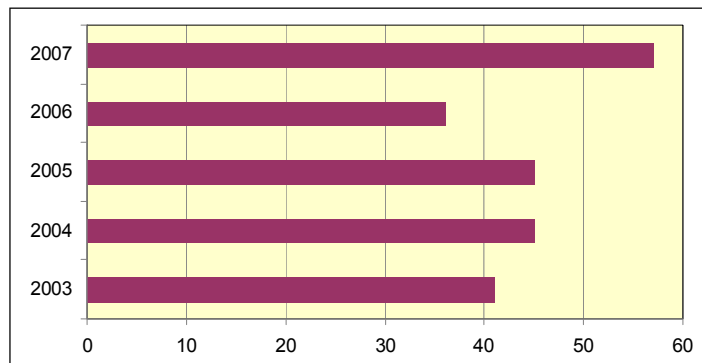
Idaho Code
Section 39-2603

Fire Inspectors



Rule 18.01.43

Fire Protection Sprinkler Fitters



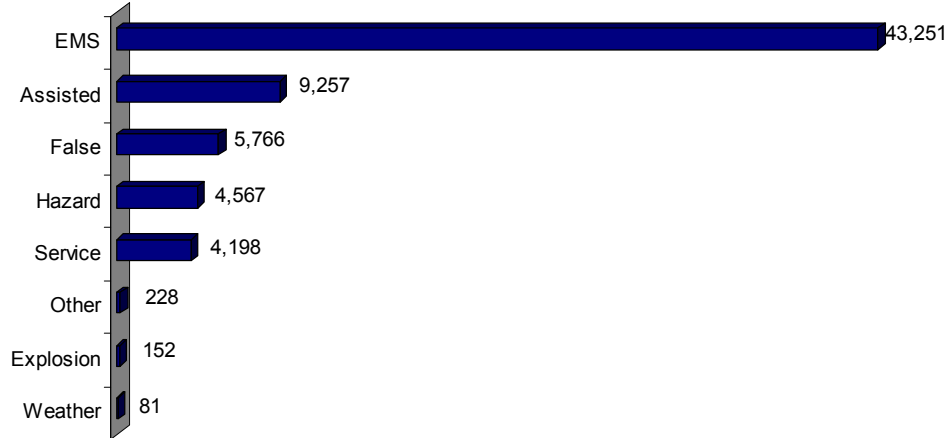
Rule 18.01.49



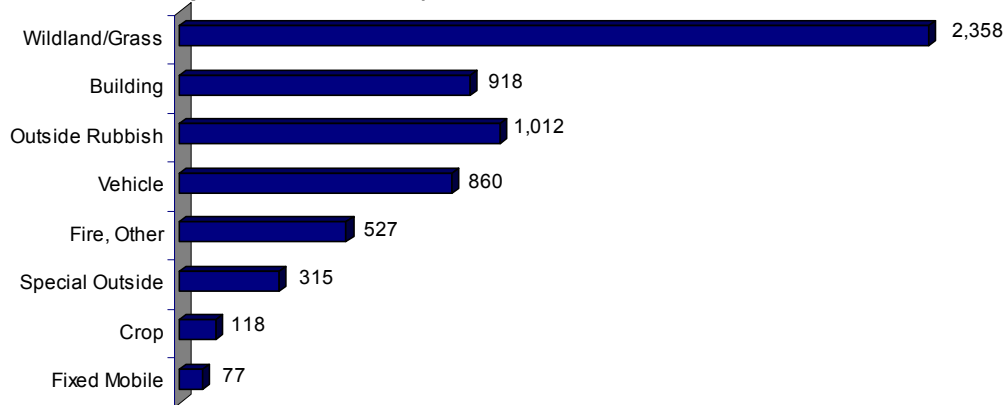
Summary Statistics

2007 State Incident Summary

Non-Fires (Mutual Aid Given reports not included)



Fires (Mutual Aid Given reports not included)



Total Responses by Incident Type (Includes Mutual Aid Given Reports)

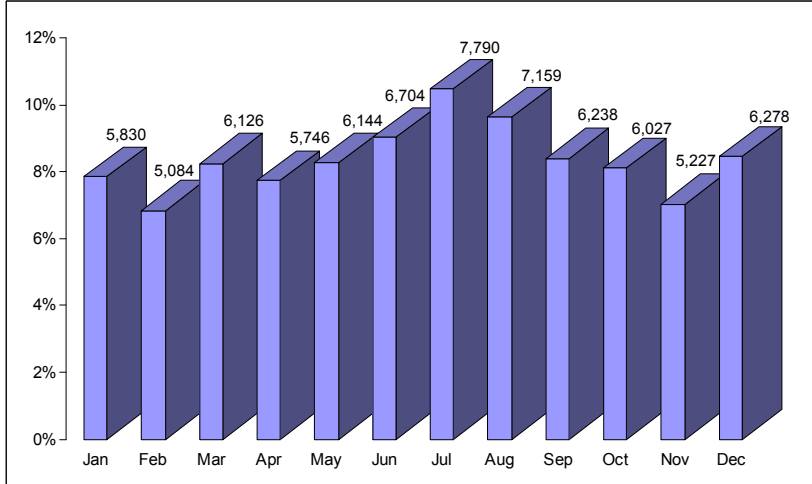
Incident Type	Incident Count	% of Total Incidents	Average Response Time (minutes)	Average Personnel per Incident	Average Apparatus per Incident	\$ Loss	Civilian Casualties	Fire Service Casualties
EMS	45,285	57%	8.31	4	1	\$1,136,200	0	36
Assisted	10,445	13%	4.67	4	2	\$155,350	0	2
Fire	8,389	11%	13.9	7	3	\$59,941,618	80	45
False	6,115	8%	9.96	7	3	\$581,300	0	0
Hazard	4,710	6%	6.27	4	2	\$603,350	0	0
Service	4,372	5%	8.34	4	1	\$156,430	0	3
Other	238	0%	7.23	3	1	\$0	0	5
Explosion	164	0%	6.07	2	3	\$108,930	0	0
Weather	90	0%	63.8	6	2	\$25,000	0	0
Total	79,808	100%				\$62,708,178	80	91



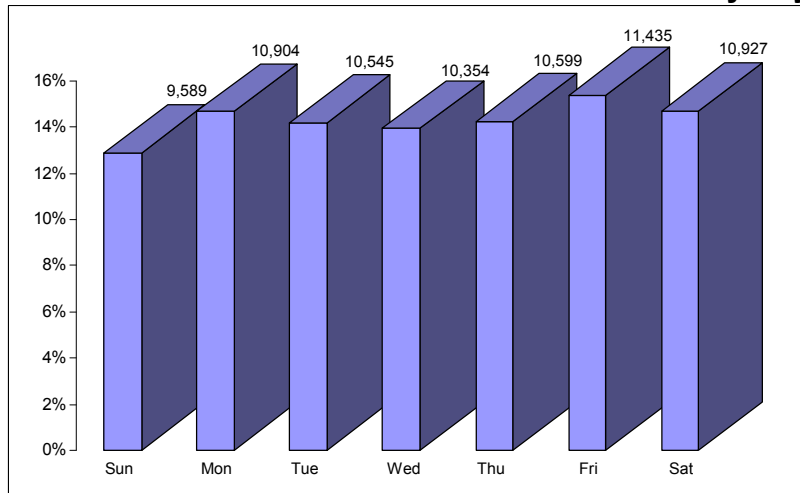
Summary Statistics

Month, Day and Hour (Includes Mutual Aid Given Reports)

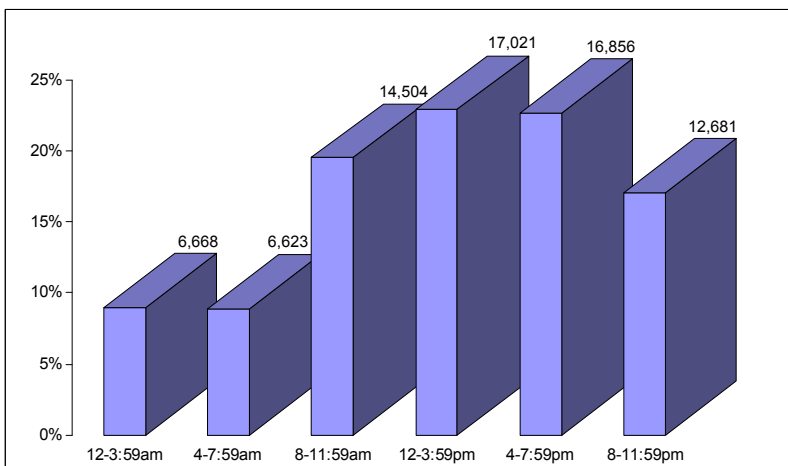
Incidents by Month



Incidents by Day

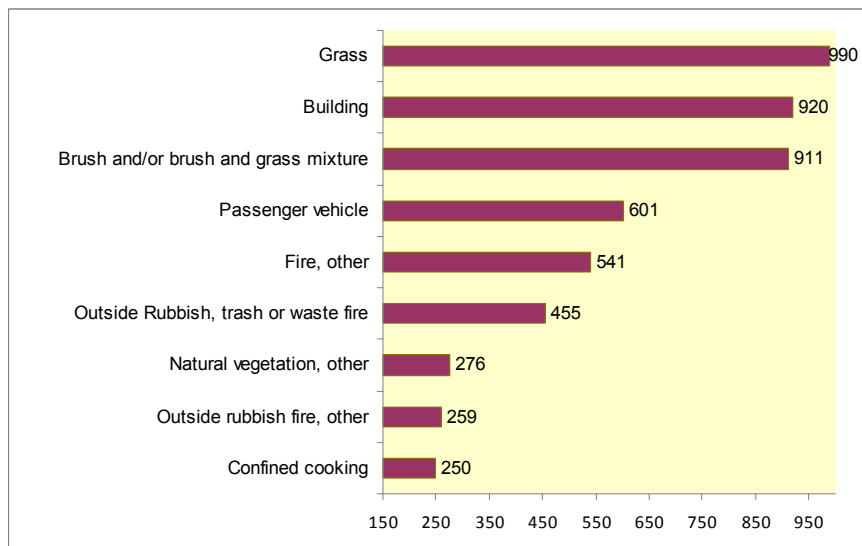


Incidents by Hour



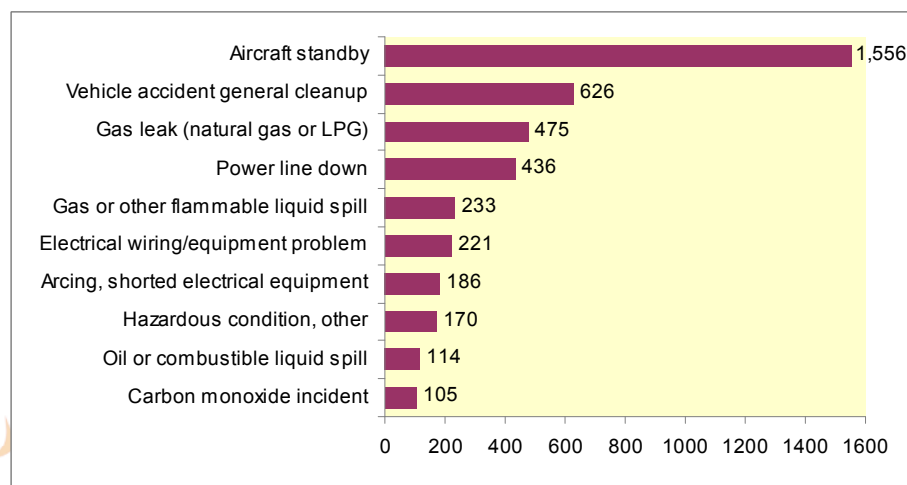
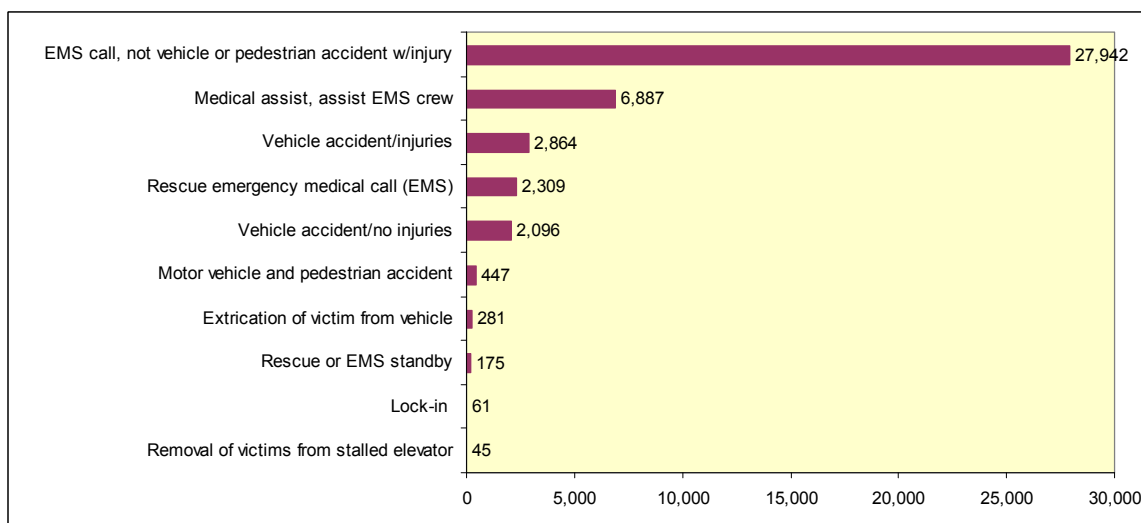
Summary Statistics

Top 10 Incident Types by Incident Categories (Mutual Aid Given Reports not included)



Fire

EMS

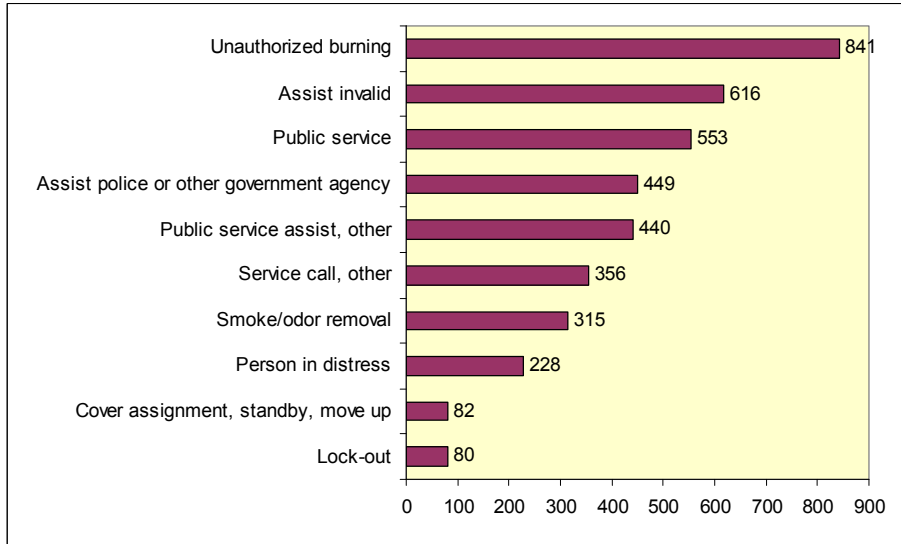


Hazardous Condition

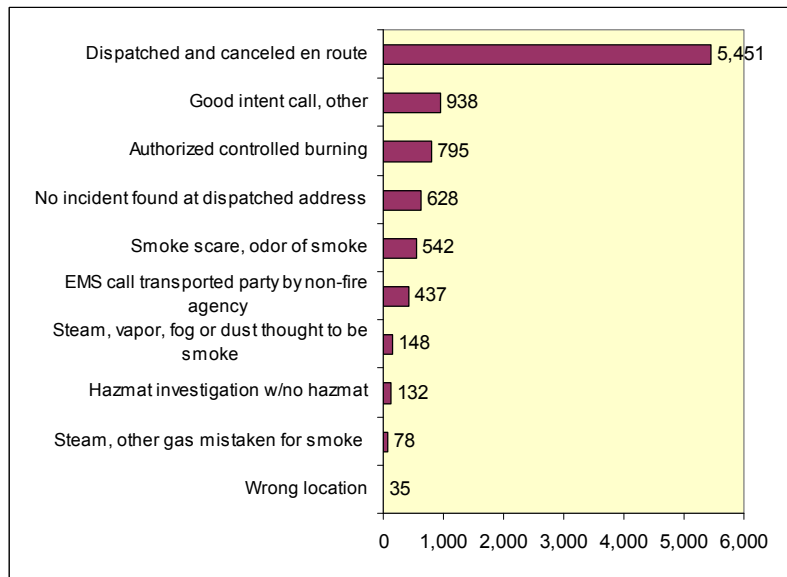


Summary Statistics

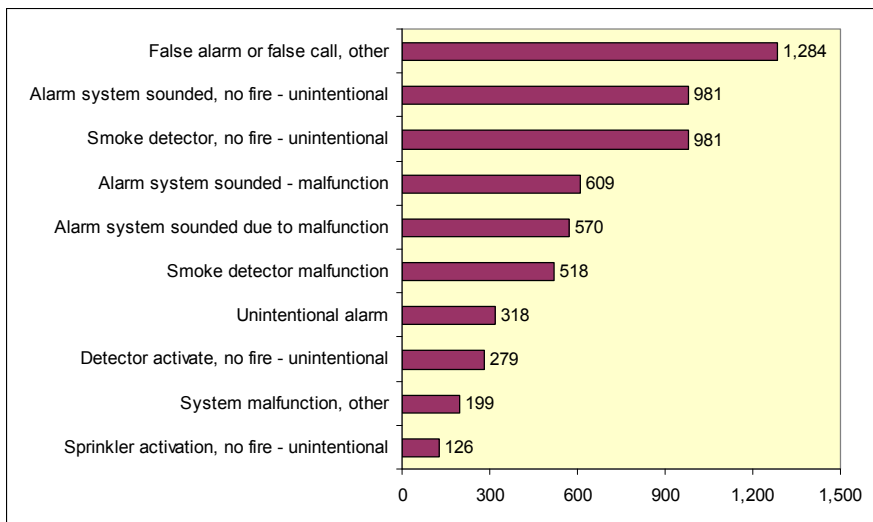
Top 10 Incident Types by Incident Categories (cont) (Mutual Aid Given Reports not included)



Service



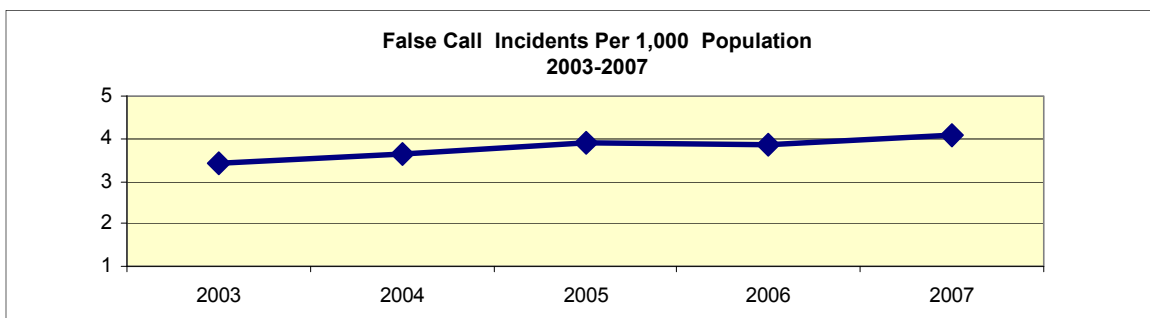
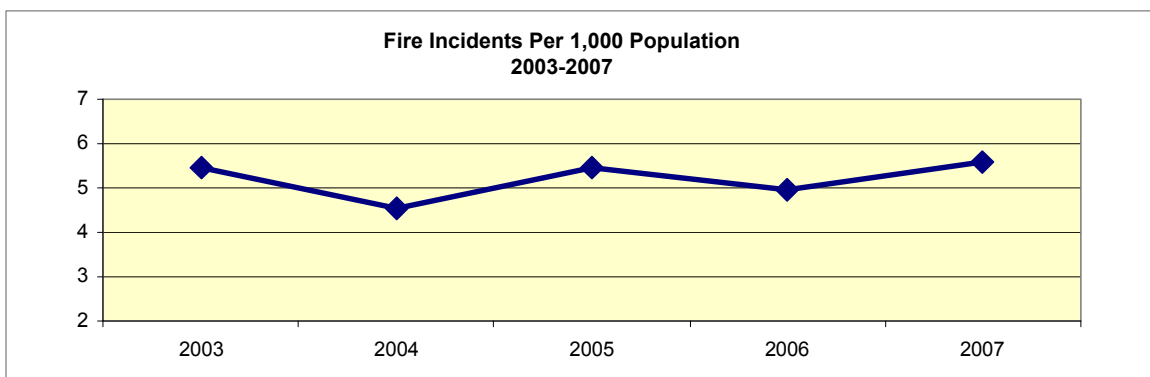
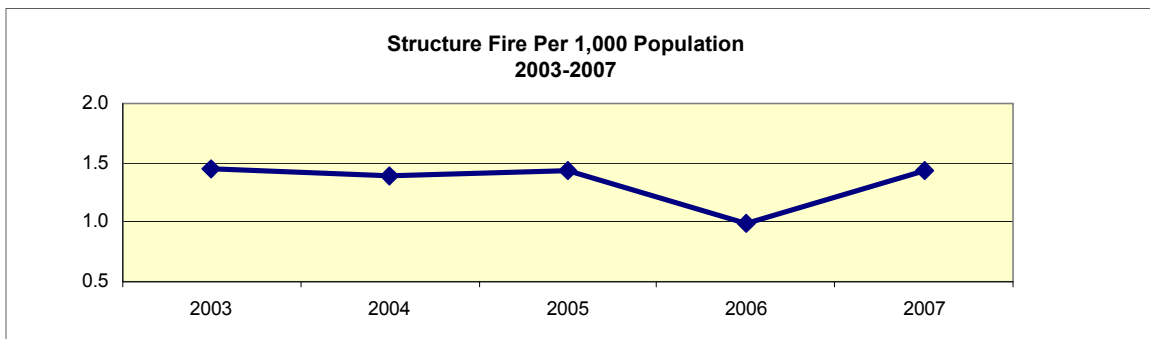
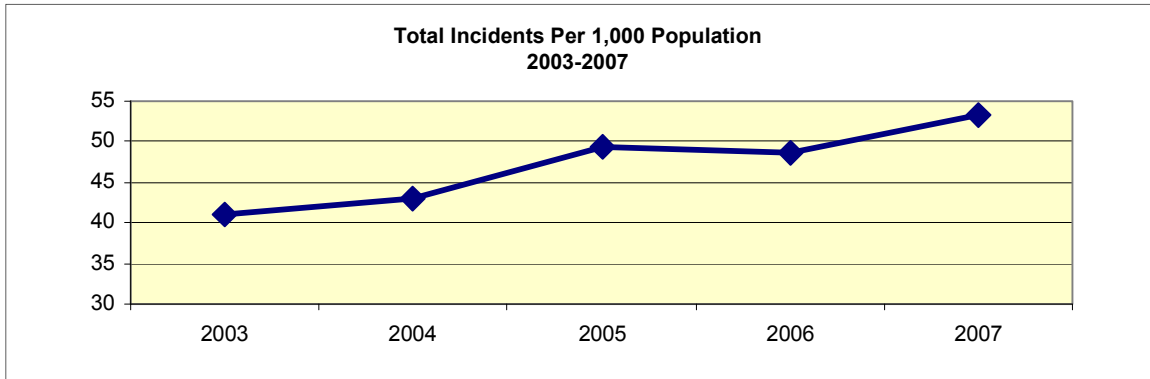
Good Intent



False

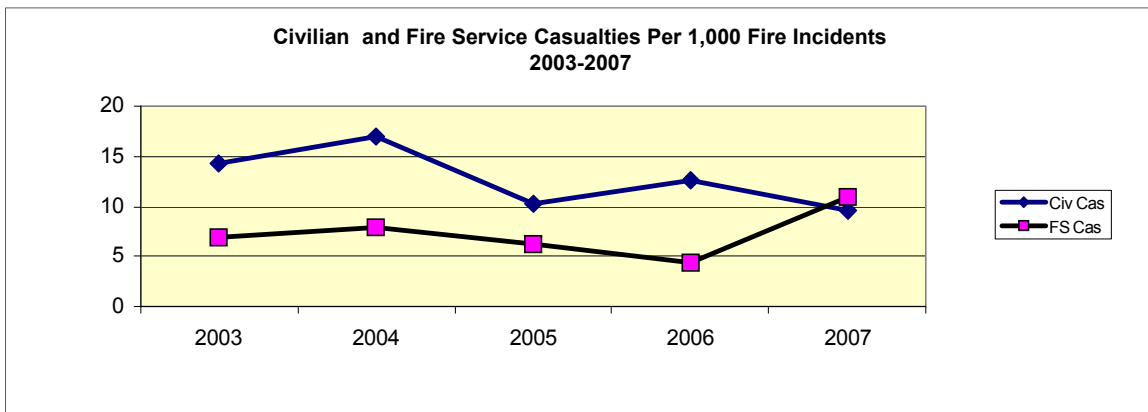
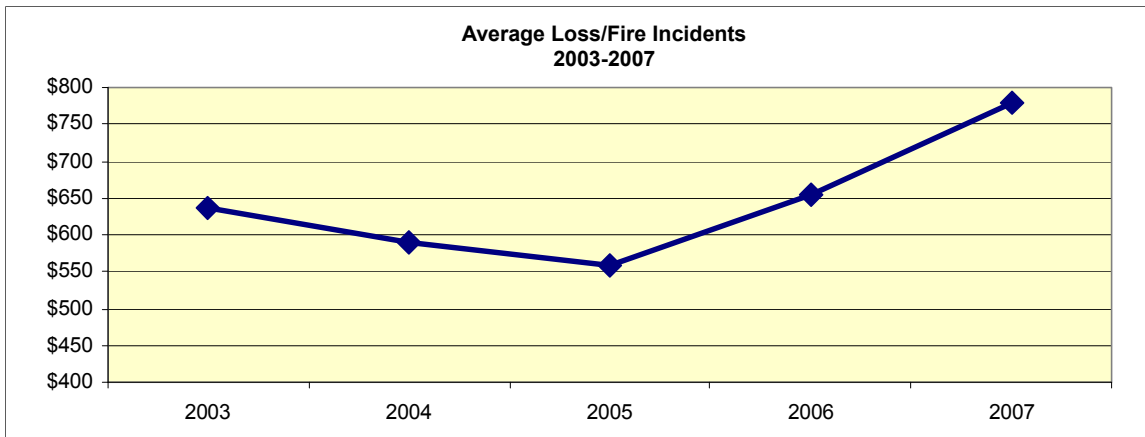
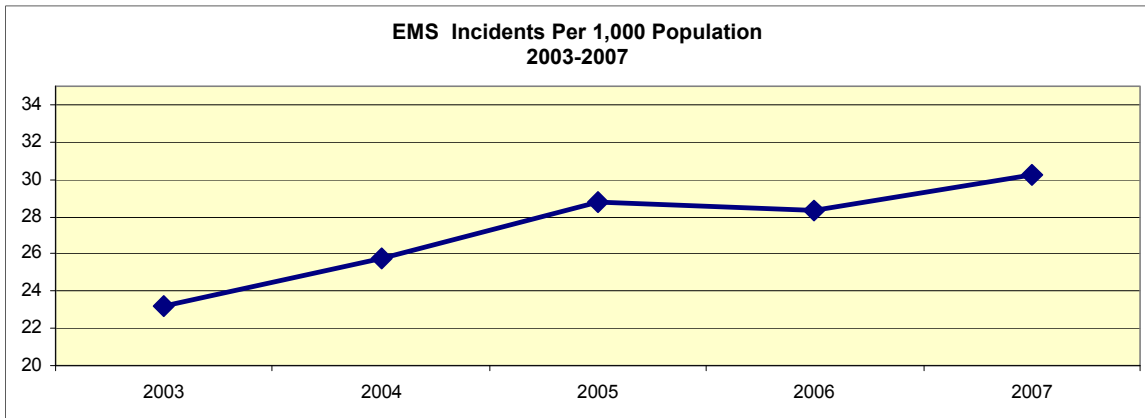
Summary Statistics

Five-Year Trends



Summary Statistics

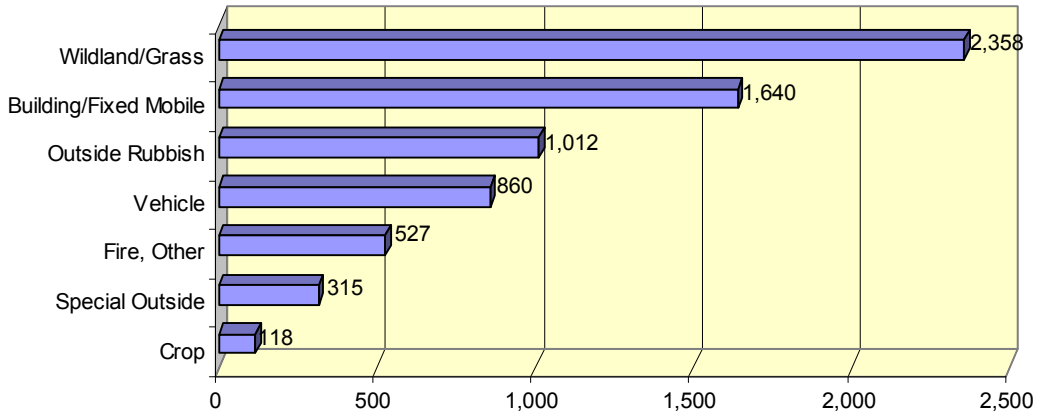
Five-Year Trends (continued)



Summary Statistics

Fires in Idaho - 2007 (Mutual Aid Given Reports not included)

Fire Groups	Incident Count	% of Total Fire Incidents	\$ Loss	Civilian Casualties	Fire Svc Casualties
Wildland/Grass	2,358	35%	\$1,519,558	4	10
Building/Fixed Mobile	1,640	24%	\$52,528,192	58	30
Outside Rubbish	1,012	15%	\$29,861	2	1
Vehicle	860	13%	\$3,446,960	14	3
Fire, Other	527	8%	\$387,987	3	0
Special Outside	315	5%	\$1,680,620	0	1
Crop	118	2%	\$326,720	0	0
Totals	6,830	100%	\$59,919,898	81	45



This haystack fire (400 ton) in Jerome County burned for four days. Photo taken by news media.



Fire Stations Across Idaho



Star Fire Protection District



Central Fire District - Rigby



Downey Volunteer Fire Department



Clearcreek Volunteer Fire Department



North Ada County Fire and Rescue



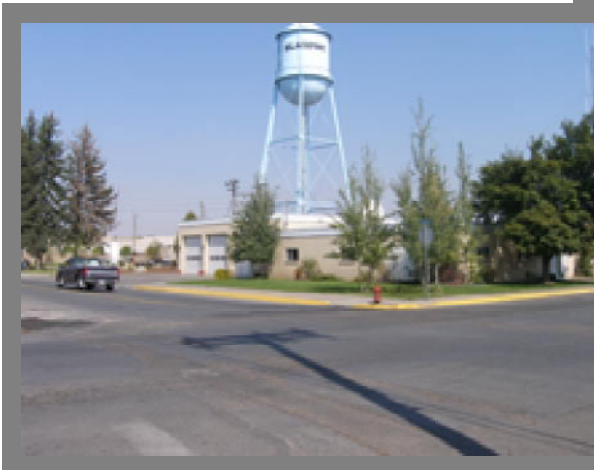
Fire Stations Across Idaho



McCall Fire Protection District



J.R. and Esther Simplot
Mountain Home Volunteer Fire Department



Blackfoot Fire Department



Pocatello Valley Fire Protection District #2



Shoshone County Fire District #1 - Wallace Station



Structure Fires

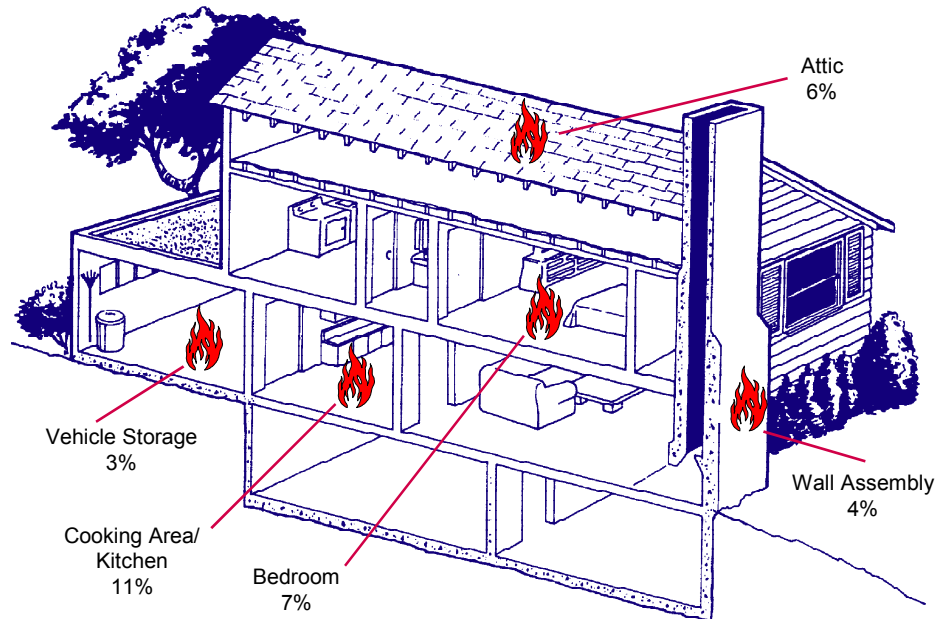
Structure Fires by Property Type

	Incident Count	% of Total Incidents	Response Time (minutes)	\$ Loss	% of Total \$ Loss	Civilian Casualties	% of Total Civ Cas	Fire Svc Casualties	% of Total FS Cas
Residential	1,251	72%	7.7	\$18,110,421	35%	47	82%	11	58%
Storage	136	8%	8.6	\$1,772,160	3%	2	4%	1	5%
Outside/Special Prop	98	6%	7.3	\$592,570	1%	0	0%	1	5%
Business	61	4%	5.3	\$3,156,341	6%	1	2%	1	5%
Manufacturing	51	3%	9.4	\$12,351,900	24%	7	12%	4	21%
Assembly	39	2%	5.7	\$429,220	1%	0	0%	0	0%
Health Care/Jail	25	1%	5.6	\$151,800	0%	0	0%	0	0%
Other	15	1%	15.3	\$1,077,350	2%	0	0%	0	0%
Industry/Utility/Defense	26	1%	12.2	\$65,900	0%	0	0%	0	0%
Education	25	1%	5.3	\$13,868,670	27%	0	0%	1	5%
None	8	0%	34.0	\$5,000	0%	0	0%	0	0%
Total/Average	1,735		10.6	\$51,581,332		57		19	

Although residential fires represent 72% of all structure fire incidents, they account for 82% of civilian casualties and 58% of fire service casualties. In 2007 residential fires also represent 35% of total building fire losses.

Overall, the average response time for structure fires is 10.6 minutes. The average response time for residential fires is under 8 minutes.

Top 5 Identified Areas of Origin for Residential Structures



Residential Fire Area of Origin (Mutual Aid Given Reports not included)

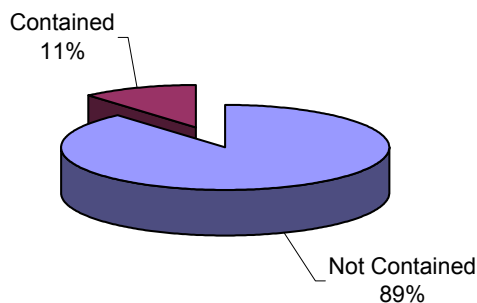
	Incident Count	% of Total Incidents	Response Time (minutes)	\$ Loss	% of Total \$ Loss	Civilian Cas	% of Total Civ Cas	Fire Svc Cas	% of Total FS Cas
Cooking area, kitchen	111	11%	5.9	\$1,580,860	9%	4	9%	0	0%
Outside area, other	92	9%	23.1	\$81,275	0%	0	0%	0	0%
Bedrm-less than 5 persons; jail/prison included	76	7%	6.5	\$1,789,120	10%	7	16%	4	36%
Attic:vacant, crawl space above top story, cupola	64	6%	6.3	\$936,418	5%	1	2%	1	9%
Undetermined	59	6%	10.2	\$1,974,900	11%	5	11%	0	0%
Open area-outside; included are farmland, field	56	6%	8.3	\$320,200	2%	1	2%	0	0%
Wall assembly	41	4%	6.7	\$439,920	2%	0	0%	0	0%
Wall surface: exterior	47	5%	7.6	\$1,051,050	6%	4	9%	0	0%
Common rm, den, family rm, living rm, lounge	39	4%	7.0	\$1,210,100	7%	4	9%	3	27%
Vehicle storage area; garage, carport	32	3%	6.3	\$1,499,600	8%	2	4%	0	0%
Totals	617			\$10,883,443		28		8	

Structure Fires

Residential Structure Fire Spread - Contained in Room of Origin

	Incident Count	% of Total Incidents	\$ Loss	% of Total Loss	Civilian Cas	% of Total Civ Cas	Fire Svc Cas	% of Total FS Cas
Not Contained	1,576	89%	\$16,367,320	89%	40	82%	12	100%
Contained	200	11%	\$1,937,388	11%	9	18%	0	0%
Total	1,776		\$18,304,708		49		12	

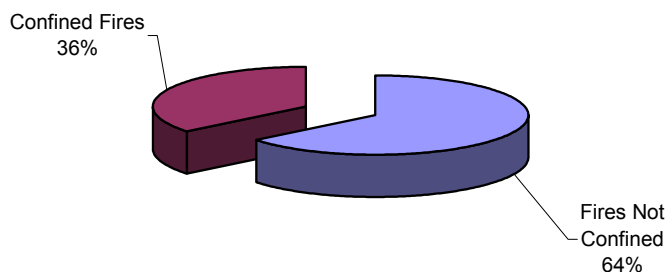
Fire Contained in Room of Origin



"Contained fire" is defined as fire spread that is reasonably expected to remain in check under prevailing conditions.

	Incident Count	% of Incident Count	\$Loss	Civilian Casualties	Fire Svc Casualties
Fires Not Confined	1,054	64%	\$52,431,245	49	30
Confined Fires	586	36%	\$96,947	9	0
Total	1,640		\$52,528,192	58	30

Structure Fires - Confined/ Not Confined Fires (Building/Fixed Mobile Property Incidents not including Mutual Aid Given Reports)



"Confined fires" are defined as fires where the flame does not extend beyond a non-combustible container. Stove top, trash can, or chimney fires are examples of confined fires.



Top 10 Large Fire Loss Events

Estimated Dollar Losses & Value	Date	Location	Responding Fire Department	Property Use	Cause of Fire
\$13,000,000	2/1/2007	Middleton	Middleton Fire Department	High school/junior high school	Undetermined
\$ 1,800,000	11/28/2007	Moscow	Moscow City Fire Department	Mercantile, business, other	Undetermined
\$ 1,200,000	9/17/2007	Mountain Home	Mountain Home City Volunteer Fire Department	Club	None
\$ 1,000,000	6/26/2007	Rigby	Central Fire District	Motor vehicle or boat sales, service, repair	Undetermined
\$ 800,000	1/28/2007	Preston	Franklin County Fire District	Manufacturing, processing	Undetermined
\$ 800,000	3/15/2007	Idaho Falls	Idaho Falls Fire Department	Manufacturing, processing	Undetermined
\$ 585,000	11/12/2007	Clear Creek	Clear Creek Fire Department	1- or 2-Family dwelling	Undetermined
\$ 550,000	11/7/2007	St. Anthony	South Fremont Fire District	1- or 2-Family dwelling	Undetermined
\$ 500,000	3/25/2007	New Meadows	Meadows Valley Fire Protection District	School	Unspecified short – circuit arc
\$ 500,000	7/25/2007	Post Falls	Kootenai County Fire and Rescue	Eating, drinking place	Flammable liquid or gas spilled

Structure Fires

2007 Idaho Structure Fires by Property Use

NFIRS Code	Property Use	# of Structure Fires
<u>Residential Property Uses</u>		
400	Residential, other	37
419	1 or 2 family dwelling, detached, manufactured home, mobile home not in transit, duplex	990
429	Multi-family dwelling; includes apartments, condos, town houses, row houses, tenements	128
439	Boarding/rooming house; includes residential hotels and shelter	14
449	Hotels/motels, commercial	10
459	Residential board and care; includes long-term care facilities, halfway houses, and assisted-care housing facilities; excludes nursing facilities	5
460	Dormitory type residence, other	4
462	Sorority house, fraternity house	2
<u>Public Property Uses</u>		
	Assembly	39
	Educational	25
	Health care, detention and correction	25
	Mercantile, Business	61
<u>Other Property Uses</u>		
600	Utility, defense, agriculture, mining, other	8
642	Electrical distribution; includes electrical substation, transformers, and utility poles	2
645	Flammable liquid distribution, pipeline, flammable liquid pipeline.	1
655	Crops or orchards; includes plant nurseries and greenhouses as well as the processing or packaging of agricultural crops or fruit that occurs on the property	1
659	Livestock production	11
700	Manufacturing, processing; properties where there is mechanical or chemical transformation of inorganic or organic substance into new products; includes factories making products of all kinds and properties devoted to operations such as processing, assembling, mixing, packing, finishing or decorating, and repairing	46
800	Storage, other	9
807	Outside material storage area	7
808	Outbuilding or shed; includes tools and contractor sheds; excludes contractor field offices	69
819	Livestock, poultry storage; includes barns, stockyards, and animal pens	6



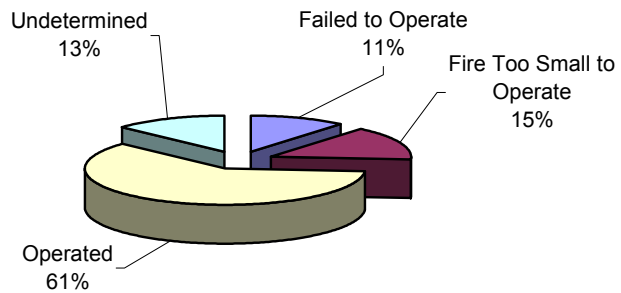
2007 Idaho Structure Fires by Property Use (cont)

839	Refrigerated Storage	1
880	Vehicle storage, other; includes airplane and boat hangers; excludes parking garages	2
881	Parking garage, detached residential garage; includes detached parking structures associated with multifamily housing	15
882	Parking garage, general vehicle; includes bus, truck, fleet, or commercial parking structures	1
888	Fire station	1
891	Warehouse; includes all general storage facilities; excludes refrigerated storage	8
899	Residential or self storage units; includes mini-storage units	5
900	Outside or special property, other	10
926	Outbuilding, protection shelter; includes toll booths, weather shelters, mailboxes, telephone booths, privies, charitable collection boxes and aerial tramways; excludes parking garages	30
931	Open land or field; includes grasslands and brushlands; excludes crops or areas under cultivation	15
935	Campsite with utilities; includes parks for camping trailers or recreational vehicles	2
936	Vacant lot; undeveloped land, not paved, may include incidental or untended plant growth or building material or debris	5
938	Graded and cared-for plots of land; includes park, cemeteries, golf courses, and residential yards	7
946	Lake, river, stream	1
951	Railroad right-of-way	1
960	Street, other	2
961	Highway or divided highway; includes limited-access highways with few intersections or at grade crossings	3
962	Residential street, road or residential driveway	5
963	Street or road in commercial area	1
965	Vehicle parking area; excludes parking garages; includes paved non-residential driveways	8
981	Construction site; excludes buildings under construction or demolition; buildings or structures under construction or demolition should be classified by their proposed or former use	2
984	Industrial plant yard area, not outdoor storage	1

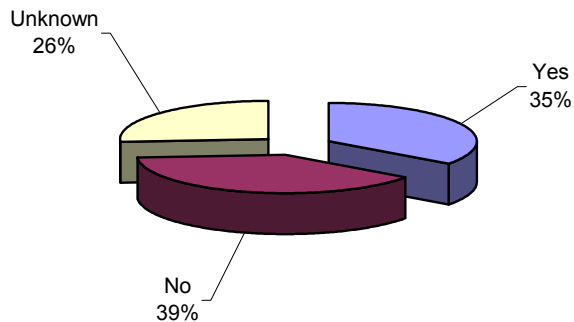
Structure Fires

Smoke Detector Performance (Mutual Aid Given Reports not included)

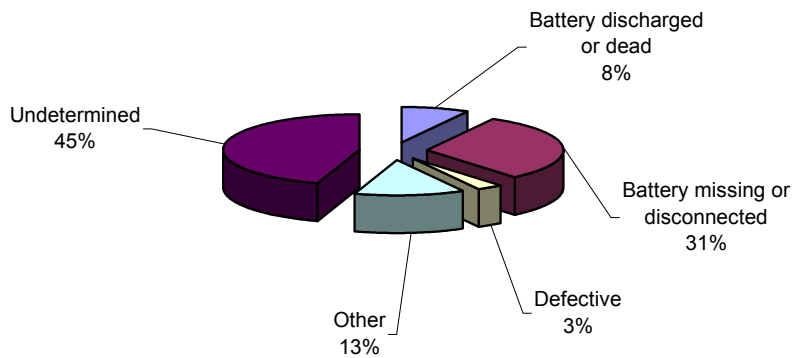
Detectors Operation When Present



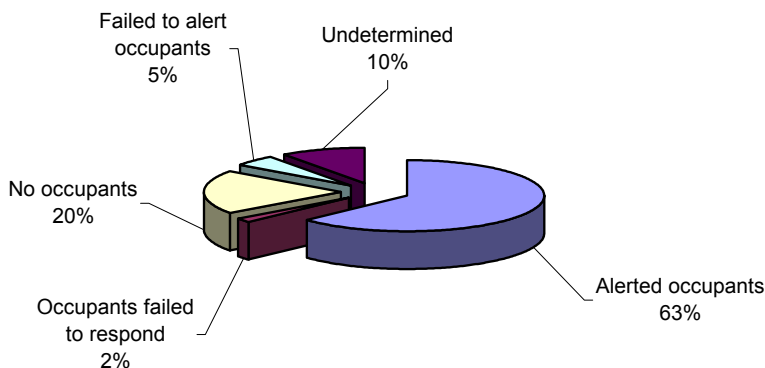
Detectors Present



Detectors Failed When Present

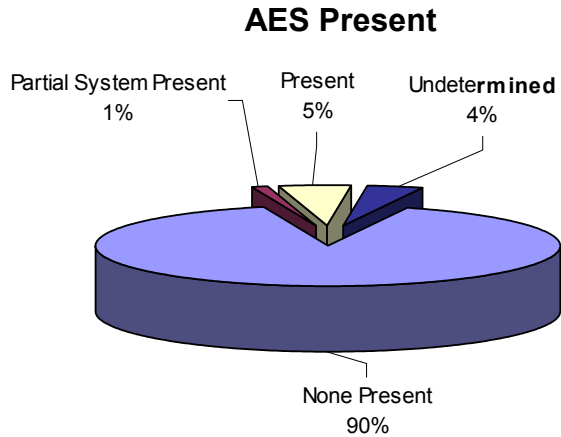


Detectors Effectiveness When Present

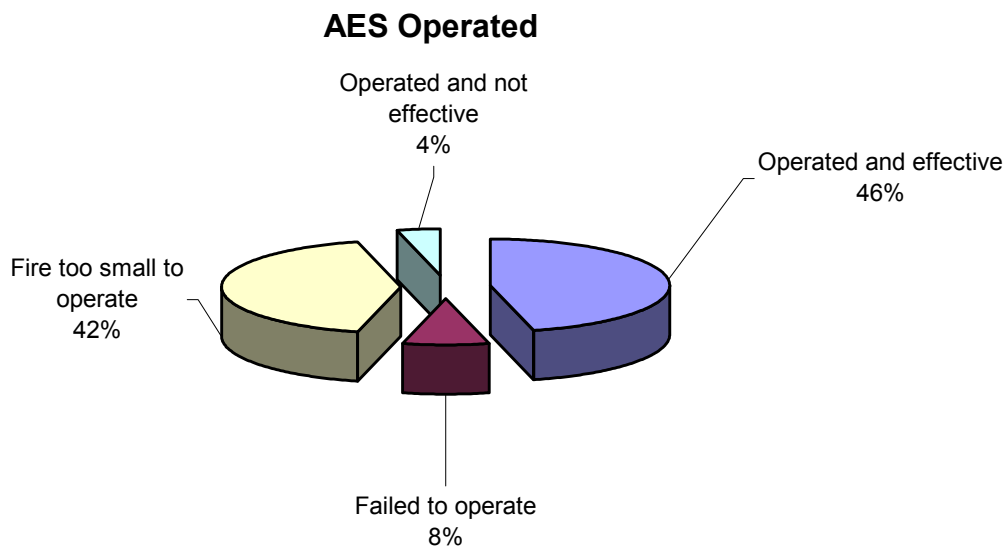
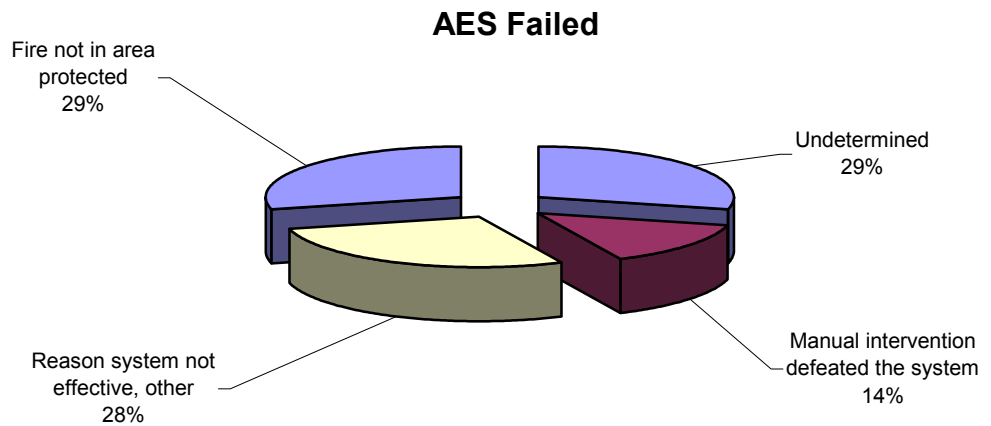


Structure Fires

Automatic Extinguishing Systems (AES) (Mutual aid given incidents not included)

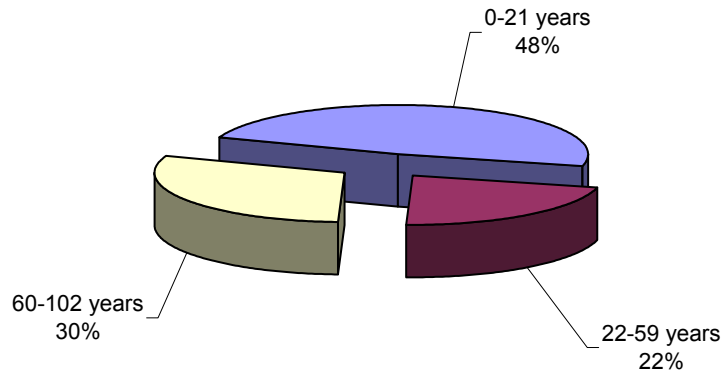


Of the 10 largest reported building fires in 2007, only one was known to be protected by an automatic extinguishing system.



Emergency Medical Services

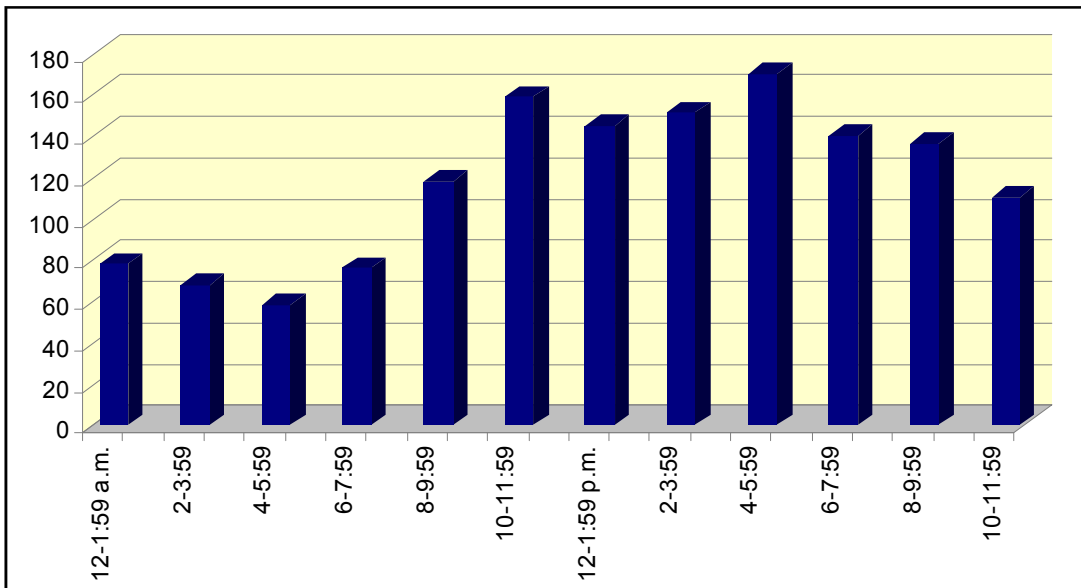
Ages of Reported EMS Victims



Gooding County EMS and Fire Mass Casualty Drill. Photo taken by Dennis Neibaur, Idaho EMS Bureau

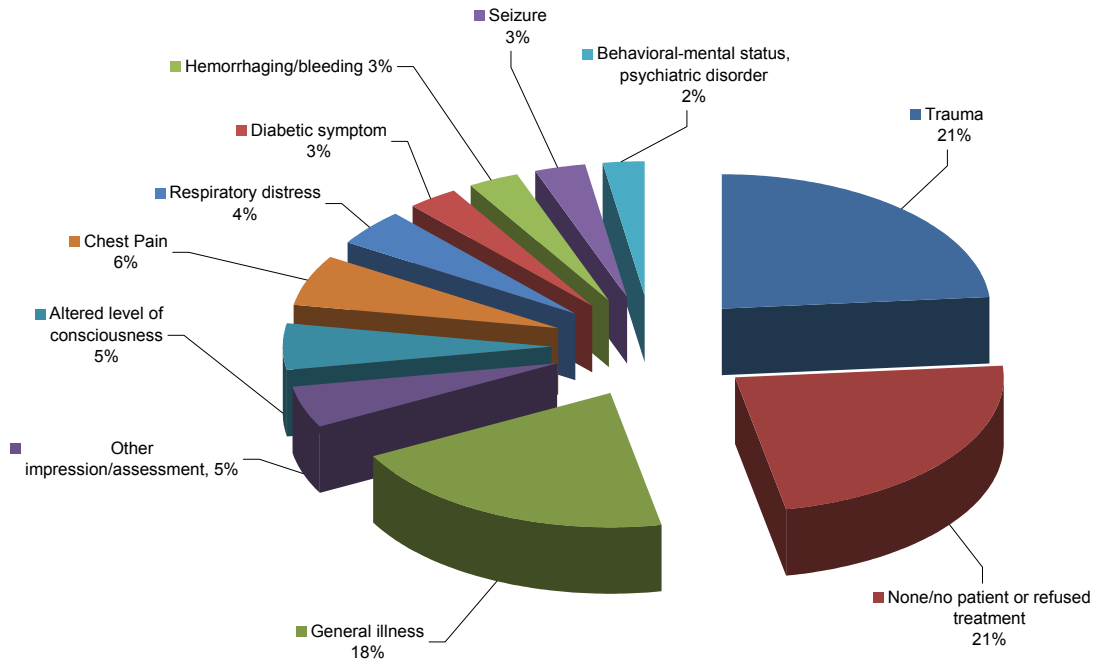


EMS Casualties by Hour of Day

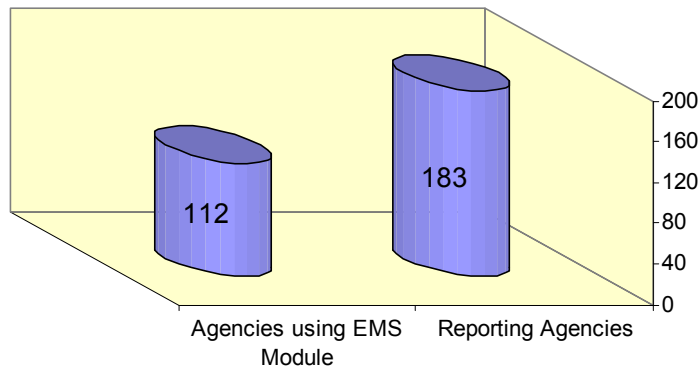


Emergency Medical Services

EMS Assessment of Patient Cause



EMS Reporting Statistics



There were 45,285 incidents reported with an EMS incident type. The EMS Module was used for 41,542 of those incidents.

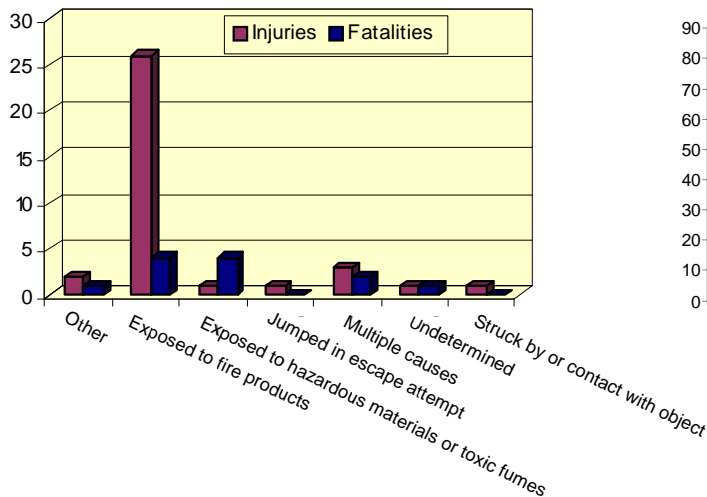
Of the 183 agencies reporting incidents in 2007, 112 (61%) used the EMS Module.

Civilian Fire Casualties

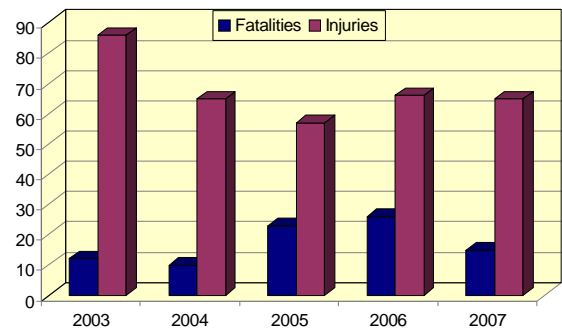
Injuries and Fatalities

"Civilian Fire Casualty" is a person who is injured or dies as the direct result of a fire-related incident. In this circumstance the term civilian includes, but is not limited to, private citizens, emergency medical service responders (not fire department personnel) and police.

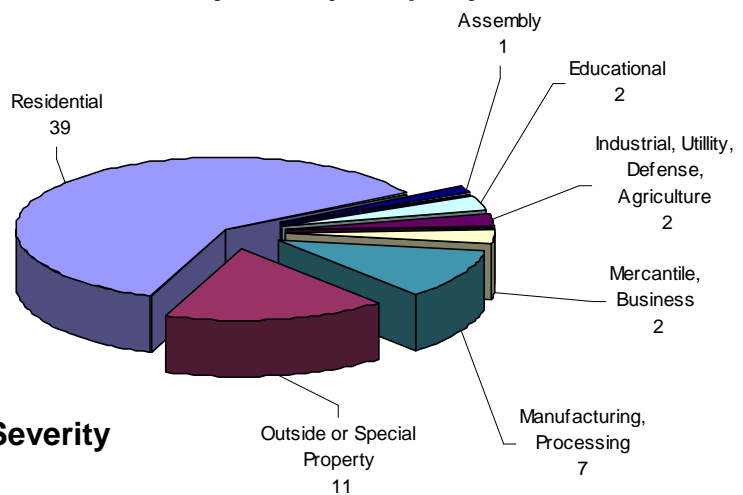
Civilian Fire Casualties by Cause of Injury



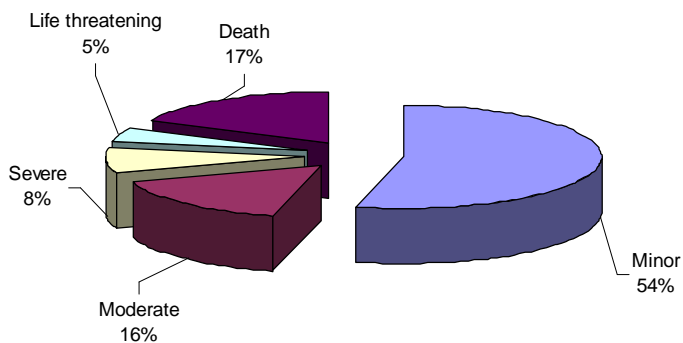
Civilian Fire Casualties for Last Five Years



Civilian Fire Injuries by Property Use



Civilian Casualties by Severity



Civilian Fire Casualties

2007 Civilian Fire Fatalities

2/2/2007

Canyon County

Male – 89 years old

House Fire – Undetermined Cause

2/27/2007

Franklin County

Male – 82 years old

House Fire – Undetermined Cause

5/11/2007

Canyon County

Male – 29 years old

House Fire – Undetermined Cause

5/22/2007

Kootenai County

Male – 50 years old

House Fire – Undetermined Cause

6/10/2007

Canyon County

Male – 18 years old

Passenger Vehicle Fire - Collision

8/2/2007

Ada County

Male – 38 years old

House Fire – Undetermined Cause

8/2/2007

Ada County

Female – 19 years old

House Fire – Undetermined Cause

8/2/2007

Ada County

Female – 8 years old

House Fire – Undetermined Cause

8/2/2007

Ada County

Female – unborn

House Fire – Undetermined Cause

9/11/2007

Jerome County

Male – 92 years old

Kitchen Fire – Cooking Materials Heat Source

9/25/2007

Nez Perce County

Male – 19 years old

Passenger Vehicle Fire – Undetermined

10/22/2007

Twin Falls County

Female – 50 years old

Passenger Vehicle Fire - Collision

11/01/2007

Lemhi County

Male - 62 years old

House Fire – Cigarette Heat Source

11/30/2007

Clearwater County

Male – 39 years old

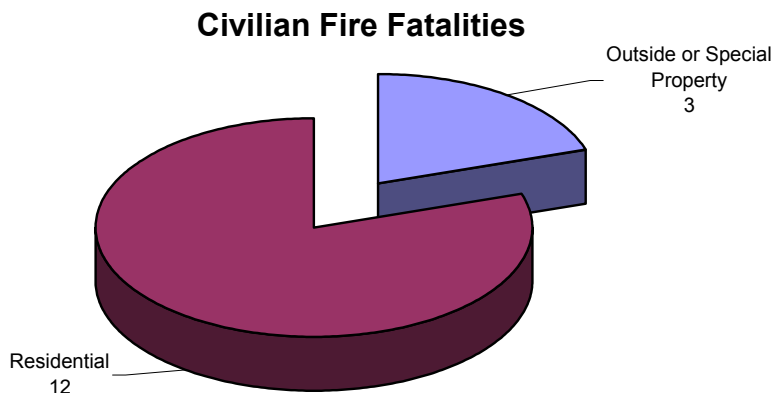
House Fire – Cigarette Heat Source

12/14/2007

Boundary County

Female – 15 years old

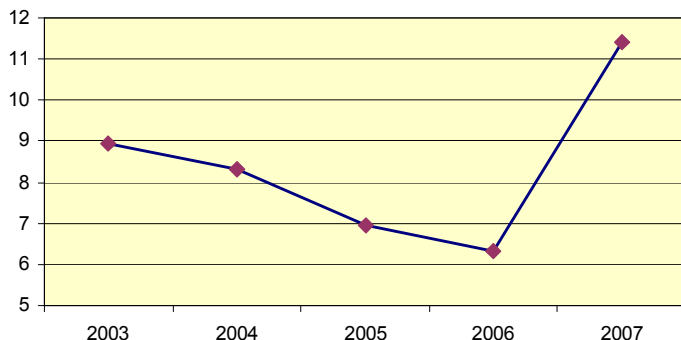
House Fire – Electrical Malfunction



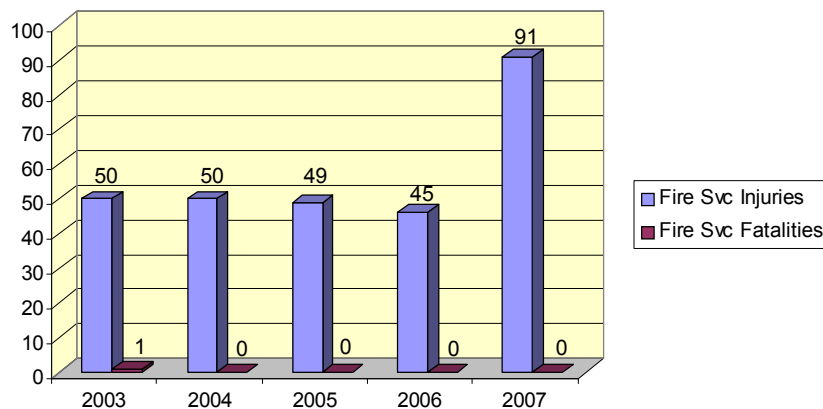
Fire Service Casualties

Fire Service Injuries

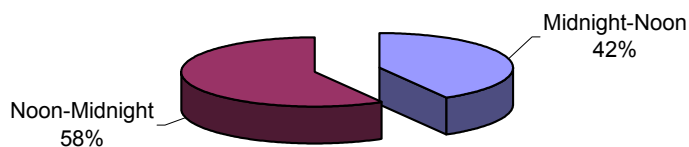
Fire Service Injuries Per 10,000 Population



Fire Service Casualties for Last 5 Years



Fire Service Injuries by Time of Day



Fire Service Injuries When Fire is Contained in Room of Origin

	Incident Count	% of Total Incidents	\$ Loss	% of Total Loss	Fire Svc Cas	% of Total FS Cas
Not Contained	1,576	89%	\$16,367,320	89%	12	100%
Contained	200	11%	\$1,937,388	11%	0	0%
Total	1,776		\$18,304,708		12	

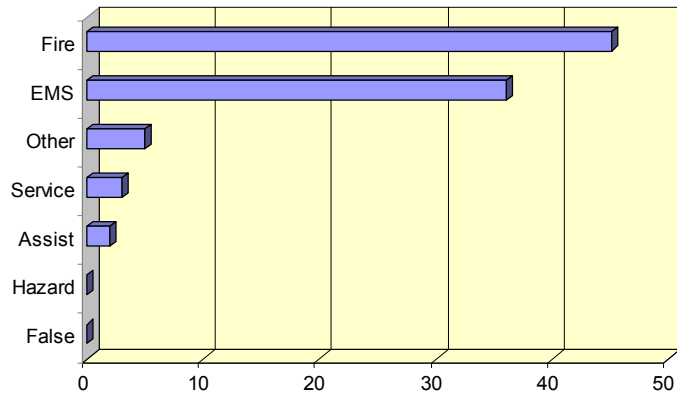
"Contained fire" is defined as fire spread that is reasonably expected to remain in check under prevailing conditions.



Fire Service Casualties

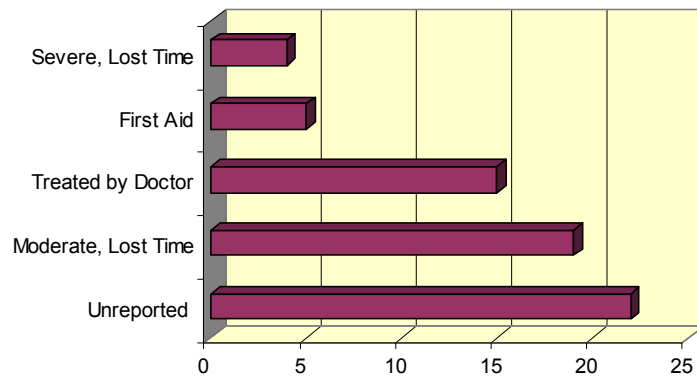
Fire Service Injuries

Fire Service Injury Count by Incident Type

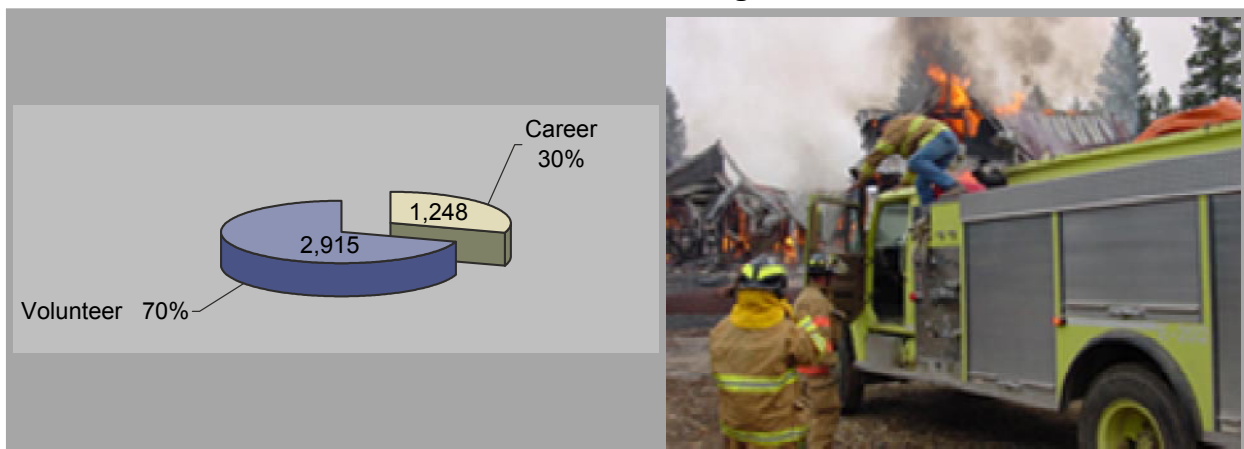


"Fire Service Casualties" are all injuries, deaths or exposures to fire service personnel including casualties occurring in conjunction with incident responses and non-incident events such as station duties or training.

Fire Service Injuries by Severity of Injuries



Career and Volunteer Firefighters in Idaho



Fire Stations Across Idaho



Bovill Volunteer Fire Department



Craigmont Fire Department



Wood River Fire Protection District



Culatesac Fire Department

The Importance of Data Quality Control in Fire Department Incident Reporting

The incident report is a legal record.

The incident report must accurately reflect the event.

The incident data is used at local, state and national levels.

The incident report is not static. Details of the report should change as more information becomes available due to further investigations by the fire department or due to a change as a direct result of the initial incident. The incident report is updated whenever the conditions or facts of the incident change.

Reporting errors are grouped into two categories, critical and warning.

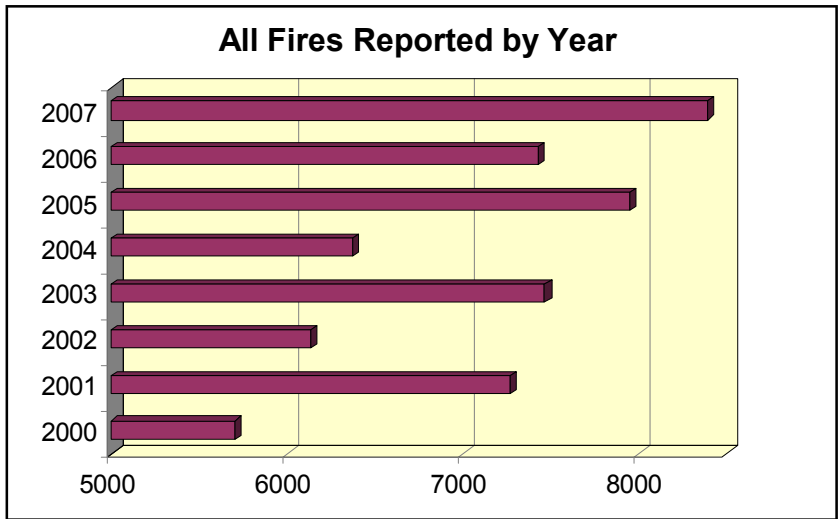
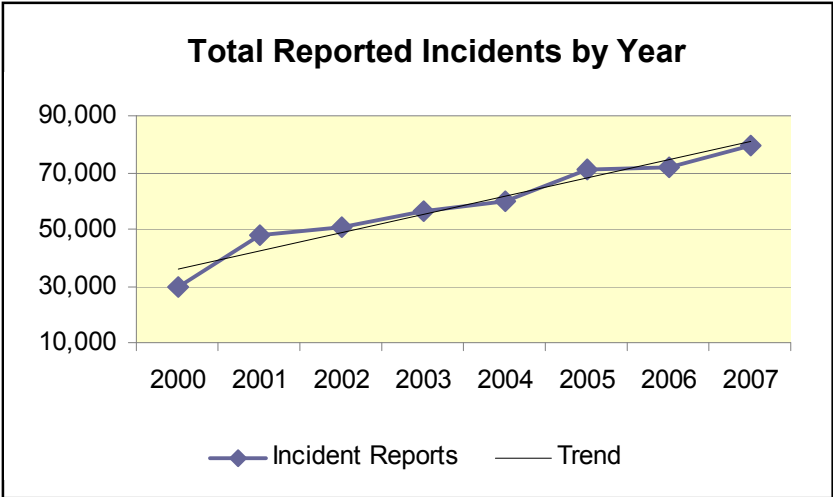
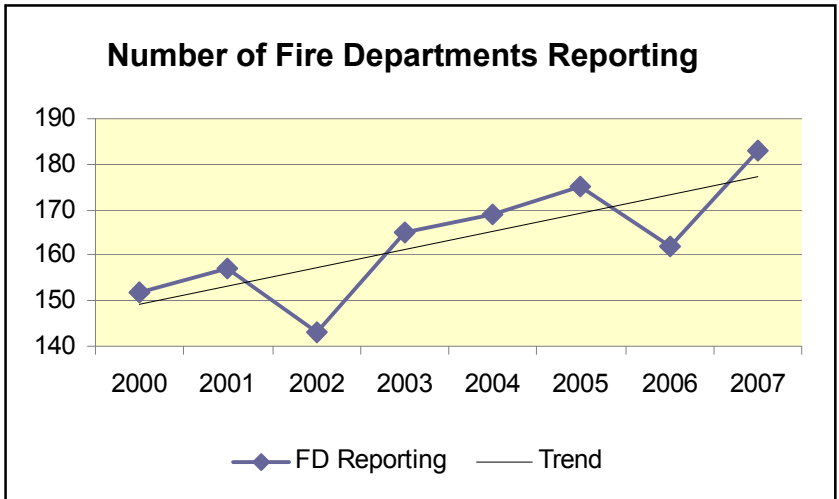
Critical Error – data that is required and must be provided on the report to allow the report to be complete or valid. A report with a critical error is marked as an invalid incident.

Warning Error – data that is either missing or incorrect on the report; a warning error will not prevent the report from being marked as complete or valid.

Examples of quality issues that may not show up as errors to the system but need a recheck for correctness, such as:

- “Alarm, Arrival and Last Unit Cleared” dates and times can significantly effect the response time calculation.
- “Undetermined” or “Under Investigation” reports can be revised if the cause was determined at a later date.
- Property and Content Loss are estimates and provide valued information for determining the magnitude of the fire problem and possible financial support for fire protection. Insurance companies do not use report estimates for replacement value of property or contents.

Reporting Trends



Departments NOT Reporting in 2007

These non-reporting departments had not yet submitted incidents as of May 1, 2008. Their reports may have had an effect on the statistics.

Aberdeen/Springfield Fire District
Ace Fire Protection Association Unit
Albion Fire Protection District
American Falls City Fire Department
Arimo Fire Protection District
Atlanta Rural Fire Department
Bear Fire District
Bovill Fire Department
Bruneau Fire Protection District
Camas County/Fairfield Fire Department
Cambridge Fire Protection District
Caribou County Fire Department
Carrot Ridge Volunteer Fire District
Castleford Fire Department
Centerville Volunteer Fire District
Clearwater Fire Service
Craigmont Fire Department
Culdesac Volunteer Fire Department
Downey Volunteer Fire Department
Dubois City Fire Department
Elk Bend Fire District
Elk City Volunteer Fire Department
Elk River Fire Department
Fernwood Rural Fire Protection District
Gibbonsville Volunteer Fire Department
Grace Fire Department
Grandjean Volunteer Fire Department
Grangemont Volunteer Fire District
Greer Rural Fire Protection District
Hall Mountain Volunteer Fire Association
Hamer Fire Protection District
High Valley Fire Protection Association
Hope-East Hope Volunteer Fire District
Inkom Fire Department
Jerome Rural Fire District #1
Juliaetta Volunteer Fire Department

Kendrick Volunteer Fire Department
Lapwai Fire Department
Leadore Fire Department
Lemhi County Fire Protection District
Moyie Springs Fire Department
Mullan Volunteer Fire Department
Nezperce Fire Department
North Fork Fire District
Oneida County Fire Protection District
Pahsimeroi Fire Protection District
Parma Fire Department
Placerville Fire Protection District
Pocatello Valley Fire Department
Potlatch Corporation SMC
Potlatch Rural Fire Protection District
Power County Rural Fire Protection District
Reubens Fire Department
Richfield Fire Protection District
Roberts Fire Department
Rockland Rural Fire District
Salmon Tract Rural Fire Protection District
Sesach Meadows Fire District
Shelley Rural Protection District
Shoshone City Fire Department
Shoshone Co Fire Protection Dist #3
South Idaho Timber Protective Association
Spirit Lake Fire Protection District
St. Joe Valley Fire District
St. Maries Fire Protection District
Stibnite Fire Department
Tensed Rural Fire District
Ucon Fire Department
Weippe Fire Department
West Jefferson Fire Control District
Yellow Pine Volunteer Fire Department

FDID	DEPARTMENT NAME	POPULATION PROTECTED										FIRE	EXPLOSIONS	EMS	HAZARDOUS CONDITION	SERVICE CALL	ASSISTED	FALSE ALARM	NATURAL DISASTER	OTHER	TOTALS	PERCENT OF TOTAL	\$ LOSS	FIRE SVC INJURY	FIRE SVC FATALITY	CIVILIAN INJURY	CIVILIAN FATALITY
		100	200	300	400	500	600	700	800	900																	
ADA COUNTY																											
01100	BOISE FD	193,085	808	44	11,351	923	1,621	1,553	0	30	16,705	13%	\$267,778	8	5												
01344	EAGLE FD	25,000	104	1	719	41	125	88	0	2	1,135	1%	\$375,500	4													
01246	KUNA RURAL FIRE DIST	25,000	119	0	645	28	124	39	0	1	1,032	0%	\$0														
01313	MERIDIAN FD	82,000	273	7	2,439	72	642	389	1	1	4,061	0%	\$1,535,085	1	1												
01236	NORTH ADA CTY FIRE & RESCUE	25,000	168	9	1,358	73	324	182	0	2	2,213	1%	\$0														
01342	STAR JOINT FPD	7,500	149	0	336	19	46	42	0	2	609	1%	\$0														
	TOTALS	357,585	1,621	61	16,848	608	2,803	2,293	1	38	25,755	16%	\$2,176,363														
ADAMS COUNTY																											
03338	BEAR FIRE DIST	14	0	0	0	0	0	0	0	0	0	0%	\$0														
03320	COUNCIL VALLEY VFD	1,000	0	0	0	2	1	0	0	0	3	0%	\$0														
03310	CUPRUM FD	12	1	0	0	0	0	0	0	0	1	0%	\$0														
03334	INDIAN VALLEY RURAL FD	600	10	0	0	4	0	0	0	0	14	0%	\$5,150														
03340	MEADOWS VALLEY FPD	1,200	1	0	0	0	0	0	0	0	1	0%	\$500,000														
	TOTALS	2,826	12	0	0	6	1	0	0	0	19	0%	\$505,150														
BANNOCK COUNTY																											
05322	ARIMO FPD	314	0	0	0	0	0	0	0	0	0	0%	\$0														
05207	CHUBBUCK FD	21,000	92	0	3	61	54	29	3	4	261	2%	\$58,700	1	1												
05326	DOWNEY VFD	672	0	0	0	0	0	0	0	0	0	0%	\$0														
05328	INKOM FD	2,500	0	0	0	0	0	0	0	0	0	0%	\$0														
05329	LAVA HOT SPRINGS VFD	2,800	17	0	0	1	5	0	0	0	24	0%	\$27,600		1												
05340	MCCAMMON FD	1,900	2	0	0	0	0	0	0	0	2	0%	\$18,500														
05101	POCATELLO FD	53,000	147	2	2,255	108	153	240	1	13	3,036	5%	\$271,710		1												
05331	POCATELLO VALLEY FD	8,500	0	0	0	0	0	0	0	0	0	0%	\$0														
	TOTALS	90,686	258	2	2,258	170	212	289	4	17	3,323	7%	\$376,510														
BEAR LAKE COUNTY																											
07343	BENNINGTON FD	2,300	18	0	0	0	1	1	0	0	25	0%	\$400														
07335	DINGLE FD	100	5	0	0	0	1	0	0	0	6	0%	\$750														
07341	FISH HAVEN FD	100	7	0	0	0	0	0	0	0	7	0%	\$500														
07339	GENEVA FD	100	2	0	0	0	0	0	0	0	2	0%	\$0														
07337	GEORGETOWN	538	5	0	0	0	0	0	0	0	5	0%	\$3,100														
07301	MONTPELIER FD	2,500	9	0	0	1	0	0	0	0	11	0%	\$90,000														
07344	NOUNAN FD	50	1	0	0	0	0	0	0	0	1	0%	\$0														
07336	OVID FD	10	17	0	0	2	1	3	1	0	24	0%	\$1,950														
07334	PARIS FD	476	5	0	0	1	0	0	0	0	6	0%	\$30,000														
07338	PEGRAM FD	100	2	0	0	0	0	0	0	0	2	0%	\$0														
07342	ST CHARLES FD	156	6	0	0	0	1	0	0	0	7	0%	\$0														
	TOTALS	6,430	77	0	0	4	7	2	0	0	96	0%	\$126,700														
BENEWAH COUNTY																											
09330	FERWOOD RURAL FPD	3,000	0	0	0	0	0	0	0	0	0	0%	\$0														
09302	PLUMMER FPD	2,750	35	1	28	2	19	13	0	0	98	0%	\$383,700		1												
N/A	POTLATCH CORP SMC	0	0	0	0	0	0	0	0	0	0	0%	\$0														
09366	ST. MARIES FPD	4,500	0	0	0	0	0	0	0	0	0	0%	\$0														
	TOTALS	10,250	35	1	28	2	19	13	0	0	98	0%	\$383,700														

FDID	DEPARTMENT NAME	POPULATION PROTECTED	FIRE	EXPLOSIONS	EMS	HAZARDOUS CONDITION	SERVICE CALL	ASSISTED	FALSE ALARM	NATURAL DISASTER	OTHER	TOTALS	PERCENT OF TOTAL	\$ LOSS	FIRE SVC FATALITY	FIRE SVC INJURY	CIVILIAN FATALITY	CIVILIAN INJURY	
BINGHAM COUNTY																			
11303	ABERDEEN / SPRINGFIELD FIRE DIST	2,000	0	0	0	0	0	0	0	0	0	0	0	0%	\$0				
11360	ATOMIC CITY FD	32	0	0	0	0	0	0	0	0	0	0	0	0%	\$0				
11101	BLACKFOOT FD	35,000	258	2	4	55	47	93	103	4	7	573	3%	\$451,645					1
11354	FIRTH FIRE DIST	5,000	40	1	21	3	3	11	1	0	0	80	0%	\$18,100					
11334	FORT HALL FPD	9,000	119	0	15	19	38	51	40	0	3	285	1%	\$95,100					
11355	SHELLEY RPD	8,700	0	0	0	0	0	0	0	0	0	0	0%	\$0					
	TOTALS	59,732	417	3	40	77	88	155	144	4	10	938	4%	\$564,845					
BLAINE COUNTY																			
13302	BELLEVUE FD	2,500	25	2	2	7	2	3	4	0	0	45	0%	\$20,000					
13354	CAREY RURAL FPD	800	1	0	0	0	0	0	0	0	0	1	0%	\$0					
13301	HALLEY FD	10,000	35	0	283	17	17	17	24	1	0	394	0%	\$75,450					
13203	KETCHUM FD	6,000	52	2	542	50	5	167	56	1	2	877	1%	\$270,210					
13306	SUN VALLEY FD	1,000	12	1	69	15	2	10	35	0	1	145	0%	\$470,000					
13334	WOOD RIVER FPD	5,000	49	0	614	5	40	65	2	0	0	775	0%	\$250,400					
	TOTALS	25,300	174	5	1,510	94	66	262	121	2	3	2,237	1%	\$1,086,060					
BOISE COUNTY																			
15309	CENTERVILLE VFD	300	0	0	0	0	0	0	0	0	0	0	0%	\$0					
15330	CLEAR CREEK FD	1,500	0	0	1	1	1	0	1	1	1	5	0%	\$585,000					
15311	GARDEN VALLEY RURAL FD	2,000	2	0	5	1	0	2	0	0	0	10	0%	\$155,000					1
15320	GRANDJEAN VFD	100	0	0	0	0	0	0	0	0	0	0	0%	\$0					
15315	HORSESHOE BEND FD	1,000	8	0	1	6	0	1	1	0	0	17	0%	\$0					
15345	HORSESHOE BEND RURAL FD		11	0	3	15	0	1	1	0	0	31	0%	\$0					
15324	IDAHO CITY FD	2,000	14	0	5	4	3	3	3	0	0	32	0%	\$341,500					
15342	LOWMAN VOL FIRE DIST, INC.	300	2	0	0	0	0	0	0	0	0	2	0%	\$0					
15301	PLACERVILLE FPD	325	0	0	0	0	0	0	0	0	0	0	0%	\$0					
15313	ROBIE CREEK VFD	300	7	0	2	5	2	1	0	0	0	17	0%	\$155,000					
15335	VALLEY OF THE PINES VFD	50	2	0	2	1	0	0	0	0	0	5	0%	\$8,000					
15340	WILDERNESS RANCH FPD	2,000	16	0	63	2	10	7	1	3	0	102	0%	\$0					
	TOTALS	9,875	62	0	82	35	16	15	7	4	0	221	0%	\$1,244,500					
BONNER COUNTY																			
17314	CLARK FORK VALLEY FIRE DIST 4	2,600	3	0	2	1	8	10	4	0	0	24	0%	\$0					
17344	COOLIN-CAVANAUGH BAY FPD	350	5	0	1	3	1	4	2	4	0	20	0%	\$3,500					
17316	HOPE-EAST HOPE VOL FIRE DIST	1,000	0	0	0	0	0	0	0	0	0	0	0%	\$0					
17339	NORTH OF THE NARROWS FD	26	6	1	0	0	1	0	3	0	0	11	0%	\$0					
17333	NORTHSIDE FPD	10,000	28	2	5	44	3	29	12	0	1	124	0%	\$0					
17341	SAGLE FIRE DIST	8,500	86	1	388	28	69	81	39	0	2	694	1%	\$115,000					1
17360	SAM OWEN FIRE DIST	300	16	0	4	5	3	3	0	0	1	32	0%	\$0					
17201	SANDPOINT FD	8,000	41	0	187	41	71	469	55	0	0	864	0%	\$390,950					
17349	SCHWEITZER FPD	4,000	0	0	66	0	0	0	0	0	0	56	0%	\$0					
17337	WEST PEND OREILLE FIRE DIST	2,000	52	0	55	117	112	51	40	21	2	450	1%	\$276,775					
17319	WEST PRIEST LAKE FD	700	8	0	5	0	2	5	1	0	1	22	0%	\$675,000					
17335	WESTSIDE FPD	4,768	36	2	308	5	12	7	11	1	0	382	0%	\$10,400					
	TOTALS	42,244	281	6	1,011	244	282	659	163	26	7	2,679	3%	\$1,471,625					

FDID	DEPARTMENT NAME	POPULATION PROTECTED	FIRE	EXPLOSIONS	EMS	HAZARDOUS CONDITION	SERVICE CALL	ASSISTED	FALSE ALARM	NATURAL DISASTER	OTHER	TOTALS	PERCENT OF TOTAL	\$ LOSS	FIRE SVC FATALITY	FIRE SVC INJURY	CIVILIAN FATALITY	CIVILIAN INJURY	
BONNEVILLE COUNTY																			
19315	AMMON FD	13,600	43	2	1	24	3	14	58	0	0	0	145	0%	\$23,600				
19340	GREAT SWAN VALLEY FPD # 2	1,000	19	1	22	1	1	8	9	0	0	2	63	1%	\$242,800				
19101	IDAHO FALLS FD	80,000	388	8	2,010	187	36	335	280	2	8	3,254	3%	\$9,433,125	1				7
19317	UCON FD	1,025	0	0	0	0	0	0	0	0	0	0	0	0%	\$0				
	TOTALS	95,625	450	11	2,033	212	40	357	347	2	10	3,462	4%	\$9,699,525					
BOUNDARY COUNTY																			
21301	BONNERS FERRY FD	3,000	12	0	0	15	13	24	5	0	0	0	69	0%	\$110,000				2
21333	CURLEY CREEK VFD	850	9	0	0	6	0	1	0	1	0	0	17	0%	\$170,500			1	
21344	HALL MOUNTAIN VOL FIRE ASSN	1,200	0	0	0	0	0	0	0	0	0	0	0	0%	\$0				
21315	MOYIE SPRINGS FD	656	0	0	0	0	0	0	0	0	0	0	0	0%	\$0				
21341	NORTH BENCH FIRE DIST	2,000	30	0	1	18	1	12	2	0	0	0	64	0%	\$123,100				1
21348	PARADISE VALLEY FD	2,500	8	0	0	2	2	2	0	4	0	0	18	0%	\$0				
21346	SOUTH BOUNDARY FPD	2,500	29	1	5	17	1	7	3	0	0	0	63	0%	\$100				
	TOTALS	12,706	88	1	6	58	17	46	10	5	0	231	0%	\$403,700					
BUTTE COUNTY																			
23316	ARCO FD	1,100	8	0	5	4	0	0	0	0	0	0	17	0%	\$40,500				1
23341	LOST RIVER FPD	500	9	0	0	0	0	0	0	0	0	0	9	0%	\$1,500				
	TOTALS	1,600	17	0	5	4	0	0	0	0	0	26	0%	\$42,000					
CAMAS COUNTY																			
25301	CAMAS COUNTY/FAIRFIELD FD	1,500	5	0	1	1	3	4	3	0	0	0	17	0%	\$14,000				
25340	WEST MAGIC FIRE DIST	200	1	0	0	0	0	0	0	0	0	0	1	0%	\$0				
	TOTALS	1,700	6	0	1	1	3	4	3	0	0	18	0%	\$14,000					
CANYON COUNTY																			
27211	CALDWELL CITY FPD	42,000	182	2	1,635	47	165	486	181	2	8	2,708	3%	\$3,738,380			19	1	5
27246	CALDWELL RURAL FIRE DIST	10,000	144	1	301	11	29	188	40	0	4	718	2%	\$686,480			12		
27344	MELBA RURAL FPD	3,000	42	0	7	5	6	4	5	0	0	69	0%	\$34,250			2	1	
27336	MIDDLETON FIRE RESCUE	18,000	140	2	486	7	88	136	39	0	5	903	2%	\$13,035,000	1				1
27101	NAMPA CITY FD	98,563	240	4	3,355	130	458	1,540	396	1	0	6,124	0%	\$864,910			4	1	10
27338	PARMA FD	7,600	0	0	0	0	0	0	0	0	0	0	0	0%	\$0				
27109	SOUTHWEST HAZ MAT REGIONAL TEAM	7,600	0	0	0	6	0	0	0	0	0	6	0%	\$0					
27339	UPPER DEER FLAT FD	8	0	0	0	0	0	0	0	0	0	8	0%	\$0					8
27307	WILDER RURAL FPD	4,090	68	0	124	3	6	17	5	0	0	223	0%	\$205,475			1		
	TOTALS	190,853	824	9	5,908	209	752	2,371	666	3	17	10,759	7%	\$18,764,495					
CARIBOU COUNTY																			
29306	BANCROFT FD	350	5	0	0	1	0	0	1	0	0	7	0%	\$0					
29305	CARIBOU COUNTY FD	2,700	0	0	0	0	0	0	0	0	0	0	0	0%	\$0				
29309	GRACE FD	100	0	0	0	0	0	0	0	0	0	0	0	0%	\$0				
29301	SODA SPRINGS FD	3,000	8	0	0	1	2	3	0	0	0	14	0%	\$12,500					
	TOTALS	6,150	13	0	0	2	2	3	1	0	0	21	0%	\$12,500					

FDID	DEPARTMENT NAME	POPULATION PROTECTED	FIRE	EXPLOSIONS	EMS	HAZARDOUS CONDITION	SERVICE CALL	ASSISTED	FALSE ALARM	NATURAL DISASTER	OTHER	TOTALS	PERCENT OF TOTAL	\$ LOSS	FIRE SVC FATALITY	FIRE SVC INJURY	CIVILIAN FATALITY	CIVILIAN INJURY	
CASSIA COUNTY																			
31343	ACE FIRE PROTECTION ASSN UNIT	500	0	0	0	0	0	0	0	0	0	0	0	0%	\$0				
31342	ALBION FPD	305	0	0	0	0	0	0	0	0	0	0	0	0%	\$0				
31201	BURLEY CITY FD	20,000	115	1	319	11	13	49	60	1	0	569	0%	\$740,180					
31334	DECLO FD	338	3	0	0	0	0	0	0	0	0	3	0%	\$2,500					
31236	NORTH CASSIA RPPD	0	0	0	1	0	0	0	0	0	0	0	0%	\$0					
31340	OAKLEY FPD	1,400	34	0	0	1	3	9	2	0	0	49	0%	\$265,150					
31338	RAFT RIVER FPD	500	38	1	0	0	13	3	0	0	0	55	0%	\$85,000					
	TOTALS	23,043	190	2	320	12	16	71	65	1	0	677	0%	\$1,092,830					
CLARK COUNTY																			
33329	DUBOIS CITY FD	1,000	0	0	0	0	0	0	0	0	0	0	0%	\$0					
	TOTALS	1,000	0	0	0	0	0	0	0	0	0	0	0%	\$0					
CLEARWATER COUNTY																			
88172	CLEARWATER POTLATCH TPA	10,000	44	0	0	0	0	0	0	0	0	44	0%	\$21,383					
35301	ELK RIVER FD	200	0	0	0	0	0	0	0	0	0	0	0%	\$0					
35341	EVERGREEN RURAL FIRE DIST	200	0	0	0	0	0	1	0	0	0	1	0%	\$120,000					
35330	GRANGEMONT VOL FIRE DIST	180	0	0	0	0	0	0	0	0	0	0	0%	\$0					
35340	GREER RURAL FPD	50	0	0	0	0	0	0	0	0	0	0	0%	\$0					
35303	OROFINO FD	3,247	51	2	40	7	13	15	16	0	0	144	0%	\$499,020			1	1	
35309	PIERCE VFD	700	1	0	0	1	0	0	0	0	0	2	0%	\$0					
35338	SUNNYSIDE RURAL FPD	250	18	0	0	0	1	4	0	0	0	24	0%	\$17,000					
35305	TWIN RIDGE RURAL FD	500	6	0	0	0	0	0	0	0	0	6	0%	\$510					
35344	UPPER FORDS CREEK RURAL FD	200	4	0	0	0	0	0	0	0	0	4	0%	\$750					
35312	WEIPPE FD	1,300										0	0%	\$0					
	TOTALS	16,827	124	2	40	8	14	17	20	0	0	225	0%	\$658,663					
CUSTER COUNTY																			
37302	CHALLIS VFD	0	6	2	0	0	0	0	1	2	0	11	0%	\$0			1	1	
37305	MACKAY FD	566	9	0	1	6	0	2	2	0	0	20	0%	\$106,000					
37334	NORTH CUSTER FD	2,000	21	0	34	0	2	4	2	1	0	64	0%	\$0					
37301	SAWTOOTH VALLEY RURAL FD	400	17	0	7	0	0	6	1	0	0	31	0%	\$0					
37354	SOUTH CUSTER RURAL FPD	1,400	7	0	1	7	0	1	1	1	0	17	0%	\$235,000					
	TOTALS	4,366	60	2	43	13	2	14	8	1	0	143	0%	\$341,000					
ELMORE COUNTY																			
39338	ATLANTA RURAL FD	32	0	0	0	0	0	0	0	0	0	0	0%	\$0					
39303	GLENNS FERRY FD	1,900	6	0	0	0	0	0	0	0	0	6	0%	\$21,000					
39336	KING HILL FPD	2,000	29	0	8	2	0	3	6	0	0	48	0%	\$13,000					
39334	MOUNTAIN HOME RURAL VFD	14,000	48	0	1	2	2	4	2	0	0	59	0%	\$1,425,860					
39301	MOUNTAIN HOME VFD	4,000	55	2	0	6	13	8	26	1	0	111	0%	\$849,900				1	
39309	OASIS VFD	150	2	0	0	0	0	1	0	0	0	3	0%	\$0					
	TOTALS	22,082	140	2	9	10	15	16	34	1	0	227	0%	\$2,309,760					
FRANKLIN COUNTY																			
41301	FRANKLIN COUNTY FIRE DIST	13,000	61	1	43	14	16	20	5	0	0	160	0%	\$2,402,850				1	1
	TOTALS	13,000	61	1	43	14	16	20	5	0	0	160	0%	\$2,402,850					

FDID	DEPARTMENT NAME	POPULATION PROTECTED	FIRE	EXPLOSIONS	EMS	HAZARDOUS CONDITION	SERVICE CALL	ASSISTED	FALSE ALARM	NATURAL DISASTER	OTHER	TOTALS	PERCENT OF TOTAL	\$ LOSS	FIRE SVC FATALITY	FIRE SVC INJURY	CIVILIAN FATALITY	CIVILIAN INJURY
FREMONT COUNTY																		
43334	ISLAND PARK FPD	215	7	0	4	2	0	1	1	1	0	0	15	0%	\$27,000			
43336	NORTH FREMONT FPD	3,000	20	0	1	2	5	0	2	0	0	1	31	0%	\$0			1
43338	SOUTH FREMONT FD		5	0	0	0	1	0	0	0	0	0	6	0%	\$620,000			
43312	ST. ANTHONY VFD	6,500	0	0	0	1	0	0	0	0	0	0	1	0%	\$0			
	TOTALS	9,715	32	0	5	6	6	1	3	3	0	1	53	0%	\$647,000			
GEM COUNTY																		
45301	EMMETT FD	7,000	40	2	0	13	5	10	19	0	0	0	89	0%	\$350,450			
45334	GEM COUNTY FPD #1	10,000	113	1	17	3	3	22	9	0	0	1	169	0%	\$0			
45339	GEM COUNTY FPD #2	1,500	4	0	1	0	0	1	0	0	0	0	6	0%	\$83,500			
	TOTALS	18,500	157	3	18	16	8	33	28	0	1	264	0%	\$433,950				
GOODING COUNTY																		
47341	BLISS RURAL FD	700	35	0	55	3	14	17	7	0	0	0	131	0%	\$360,100			
47301	GOODING FD	6,000	72	0	65	30	18	24	15	0	0	0	224	0%	\$544,000			
47323	HAGERMAN FPD	2,500	44	0	23	5	6	12	5	0	2	2	97	1%	\$0			
47335	WENDELL FPD	3,000	85	0	38	26	8	37	0	0	1	1	195	0%	\$0			1
47303	WENDELL VFD	3,500	19	0	15	10	11	12	17	0	0	0	84	0%	\$592,500			
	TOTALS	15,700	255	0	196	74	57	102	44	0	3	731	1%	\$1,496,600				
IDAHO COUNTY																		
49352	BPC VOL RFD, INC.	700	1	0	0	0	0	0	0	0	0	0	1	0%	\$0			
49340	CARROT RIDGE VOL FIRE DIST	200	0	0	0	0	0	0	0	0	0	0	0	0%	\$0			
49310	COTTONWOOD CITY FD	1,000	7	0	2	0	1	1	0	0	0	0	11	0%	\$0			3
49335	COTTONWOOD RURAL FD	600	12	0	0	1	1	0	0	0	0	0	14	0%	\$0			
49316	ELK CITY VFD	400	0	0	0	0	0	0	0	0	0	0	0	0%	\$0			
49327	FERDINAND RURAL/CITY FD	150	1	0	0	0	0	0	0	0	0	0	1	0%	\$0			
49375	GLENWOOD/CARIBEL VOL FIRE DIST		2	0	0	0	0	0	0	0	0	0	2	0%	\$0			
49308	GRANGEVILLE CITY FD	3,500	20	0	3	5	1	0	4	0	0	0	33	0%	\$35,400			
49334	GRANGEVILLE RURAL FD		11	0	0	1	0	0	2	0	0	0	14	0%	\$55,000			
49362	HARPSTER VFD	300	2	0	0	0	0	3	0	0	0	0	5	0%	\$1,000			2
49330	KOOKIA FD	3,000	17	0	2	1	0	3	1	0	0	0	24	0%	\$30,900			
49336	RIDGERUNNER FD	800	11	0	0	1	1	0	1	0	0	0	14	0%	\$0			
49350	RIGGINS CITY FD	440	5	0	3	2	0	0	0	0	0	0	10	0%	\$0			
49338	SALMON RIVER RURAL FIRE DIST	3,000	12	0	6	3	0	0	0	0	3	0	24	0%	\$172,600			
49370	SESECH MEADOWS FIRE DIST	200	0	0	0	0	0	0	0	0	0	0	0	0%	\$0			
49329	STITES FD	500	1	0	0	0	0	0	0	0	0	0	1	0%	\$100			
49311	WHITEBIRD FD	108	4	0	0	0	0	0	0	0	0	0	4	0%	\$0			
	TOTALS	14,898	106	0	16	14	4	7	8	3	0	158	0%	\$295,000				
JEFFERSON COUNTY																		
51334	CENTRAL FIRE DIST	20,000	161	0	0	19	15	20	18	0	0	3	236	1%	\$1,856,570			4
51337	HAMER FPD	86	0	0	0	0	0	0	0	0	0	0	0	0%	\$0			
51314	ROBERTS FD	647	0	0	0	0	0	0	0	0	0	0	0	0%	\$0			
51340	WEST JEFFERSON FIRE CONTROL DIST	1,200	0	0	0	0	0	0	0	0	0	0	0	0%	\$0			
	TOTALS	21,933	161	0	0	19	15	20	18	0	3	236	1%	\$1,856,570				

FDID	DEPARTMENT NAME	POPULATION PROTECTED	FIRE	EXPLOSIONS	EMS	HAZARDOUS CONDITION	SERVICE CALL	ASSISTED	FALSE ALARM	NATURAL DISASTER	OTHER	TOTALS	PERCENT OF TOTAL	\$ LOSS	FIRE SVC INJURY	FIRE SVC FATALITY	CIVILIAN INJURY	CIVILIAN FATALITY	
JEROME COUNTY																			
53353	FIRST SEGREGATION FIRE DIST	2,500	40	0	37	18	6	28	1	0	0	130	0%	\$207,600	1	1	1		
53201	JEROME CITY FD	9,000	55	1	792	51	29	81	63	2	1	1,075	0%	\$170,750	2	1	1		
53333	JEROME RURAL FIRE DIST #1	8,000	0	0	0	0	0	0	0	0	0	0	0%	\$0	0	0	0		
	TOTALS	19,500	95	1	829	69	35	109	64	2	1	1,205	0%	\$378,350					
KOOTENAI COUNTY																			
55201	COEUR D'ALENE FD	44,000	175	9	5,278	121	258	505	333	8	9	6,696	4%	\$634,000	3	1	1		
55360	EAST SIDE FPD	1,500	12	0	20	24	6	16	8	0	0	86	0%	\$200	0	0	0		
55346	HAUSER LAKE FPD	2,200	38	0	82	2	13	18	13	0	0	166	0%	\$55,000	0	0	0		
55234	KOOTENAI CO FIRE & RESCUE	42,000	204	8	2,573	94	248	712	155	3	3	4,000	1%	\$1,059,825	1	1	1		
55354	MICA-KIDD ISLAND FPD	1,800	22	0	47	5	3	27	9	0	0	113	0%	\$50,000	0	0	0		
55342	NORTHERN LAKES FPD	33,256	140	2	1,986	103	191	660	107	10	6	3,205	3%	\$51,600	17	1	1		
55209	REGION #1 HAZMAT TEAM		0	0	0	4	10	2	0	0	0	16	0%	\$0	0	0	0		
55338	SPIRIT LAKE FPD	7,250	0	0	0	0	0	0	0	0	0	0	0%	\$0	0	0	0		
55352	TIMBERLAKE FPD	6,500	25	0	126	8	29	43	25	0	0	256	0%	\$131,090	1	0	0		
55336	WORLEY FPD	2,500	39	0	54	10	18	40	13	0	0	174	0%	\$8,000	0	0	0		
	TOTALS	141,006	655	19	10,166	371	776	2,023	663	21	18	14,712	8%	\$1,989,715					
LATAH COUNTY																			
57309	BOVILL FD	400	0	0	0	0	0	0	0	0	0	0	0%	\$0	0	0	0		
57342	DEARY RURAL FIRE DIST	2,000	18	0	67	4	2	1	9	0	0	101	0%	\$171,000	0	0	0		
57338	GENESEE CITY / RURAL FD	2,100	18	0	16	1	0	3	4	0	0	42	0%	\$0	0	0	0		
57307	JULIAETTA VFD	625	0	0	0	0	0	0	0	0	0	0	0%	\$0	0	0	0		
57306	KENDRICK VFD	400	0	0	0	0	0	0	0	0	0	0	0%	\$0	0	0	0		
57301	MOSCOW CITY FD	22,000	59	0	418	73	20	34	223	0	7	834	3%	\$2,258,810	0	0	0		
57334	MOSCOW RURAL DISTRICT	10,000	32	0	83	10	2	9	11	0	0	147	0%	\$45,500	0	0	0		
57336	POTLATCH RURAL FPD	791	0	0	0	0	0	0	0	0	0	0	0%	\$0	0	0	0		
57340	TROY RURAL FD	2,500	13	0	17	1	0	4	0	0	13	48	5%	\$55,000	0	0	0		
57304	TROY VFD		0	0	0	0	1	1	2	0	1	5	0%	\$0	0	0	0		
	TOTALS	40,816	140	0	601	89	25	52	249	0	21	1,177	9%	\$2,530,310					
LEMHI COUNTY																			
59310	ELK BEND FIRE DIST	300	0	0	0	0	0	0	0	0	0	0	0%	\$0	0	0	0		
59304	GIBBONSVILLE VFD	200	0	0	0	0	0	0	0	0	0	0	0%	\$0	0	0	0		
59315	LEADORE FD	2,500	0	0	0	0	0	0	0	0	0	0	0%	\$0	0	0	0		
59301	LEMHI COUNTY FPD	4,500	0	0	0	0	0	0	0	0	0	0	0%	\$0	0	0	0		
59333	NORTH FORK FIRE DIST	250	0	0	0	0	0	0	0	0	0	0	0%	\$0	0	0	0		
59344	PAHSIMEROI VFD	50	0	0	0	0	0	0	0	0	0	0	0%	\$0	0	0	0		
59330	SALMON CITY/LEMHI COUNTY FPD #1	3,100	1	0	0	0	0	0	0	0	0	1	0%	\$45,000	1	1	1		
	TOTALS	10,900	1	0	0	0	0	0	0	0	0	1	0%	\$45,000					
LEWIS COUNTY																			
61304	CRAIGMONT FD	500	0	0	0	0	0	0	0	0	0	0	0%	\$0	0	0	0		
61334	KAMIAH CITY & RURAL FPD	5,200	26	1	1	3	4	4	0	0	0	39	0%	\$152,500	0	0	0		
61310	NEZPERCE FD	1,500	0	0	0	0	0	0	0	0	0	0	0%	\$0	0	0	0		
61306	REUBENS FD	72	0	0	0	0	0	0	0	0	0	0	0%	\$0	0	0	0		
61308	WINCHESTER VFD	400	5	0	0	0	2	0	0	0	0	7	0%	\$2,500	0	0	0		
	TOTALS	7,672	31	1	1	3	6	4	0	0	0	46	0%	\$155,000					

FDID	DEPARTMENT NAME	POPULATION PROTECTED	FIRE	EXPLOSIONS	EMS	HAZARDOUS CONDITION	SERVICE CALL	ASSISTED	FALSE ALARM	NATURAL DISASTER	OTHER	TOTALS	PERCENT OF TOTAL	\$ LOSS	FIRE SVC FATALITY	FIRE SVC INJURY	CIVILIAN FATALITY	CIVILIAN INJURY
LINCOLN COUNTY																		
63303	DIETRICH RURAL FD	500	17	0	6	8	9	1	0	0	0	2	43	1%	\$0			
63308	RICHFIELD FPD	420	1	0	0	0	0	0	0	0	0	0	1	0%	\$0			
63301	SHOSHONE CITY	2,200	0	0	0	0	0	0	0	0	0	0	0	0%	\$0			
	TOTALS	3,120	18	0	6	8	9	1	0	0	0	2	44	1%	\$0			
MADISON COUNTY																		
62334	REXBURG-MADISON CO EMERG SVCS	40,000	149	4	52	54	20	84	86	86	0	6	455	3%	\$204,075			
	TOTALS	40,000	149	4	52	54	20	84	86	86	0	6	455	3%	\$204,075			
MINIDOKA COUNTY																		
67336	MINIDOKA COUNTY FPD	10,000	127	1	176	18	3	34	16	0	0	0	375	0%	\$67,000			
67301	RUPERT CITY FIRE & RESCUE	6,000	23	0	8	5	1	6	9	0	0	0	52	0%	\$25,160			
67334	WEST END FPD	8,900	86	0	163	14	1	23	3	0	0	0	290	0%	\$1,230,000			
	TOTALS	24,900	236	1	347	37	5	63	28	0	0	0	717	0%	\$1,322,160			
NEZ PERCE COUNTY																		
69333	BIG CANYON FIRE DIST	500	2	0	0	0	0	0	0	0	0	0	2	0%	\$20,000		1	1
69320	CLEARWATER FIRE SVC	2,500	0	0	0	0	0	0	0	0	0	0	0	0%	\$0			
69311	CULDESAC VFD	350	0	0	0	0	0	0	0	0	0	0	0	0%	\$0			
69306	LAPWAI FD	1,200	0	0	0	0	0	0	0	0	0	0	0	0%	\$0			
69201	LEWISTON FD	32,000	133	3	47	39	42	179	0	2	448	0	0	1%	\$1,177,560			8
69209	LEWISTON HAZ MAT TEAM		0	0	0	1	0	0	0	0	0	0	1	0%	\$0			
69344	NEZ PERCE CO FD	4,000	57	0	0	1	0	52	1	0	0	0	111	0%	\$249,260			
69220	POTLATCH CORP FIRE & RESCUE	1,700	112	0	3	1	46	3	7	0	4	176	0	2%	\$10,000			
69345	WHEATLAND VFD	275	1	0	0	0	0	0	0	0	0	0	1	0%	\$0			
	TOTALS	42,925	305	3	6	50	85	97	187	0	6	739	0	3%	\$1,456,820			
ONEIDA COUNTY																		
71301	ONEIDA COUNTY VFD/MALAD FD	5,000	0	0	0	0	0	0	0	0	0	0	0	0%	\$0			
	TOTALS	5,000	0	0	0	0	0	0	0	0	0	0	0	0%	\$0			
OWYHEE COUNTY																		
73340	BRUNEAU FPD	200	0	0	0	0	0	0	0	0	0	0	0	0%	\$0			
73338	GRAND VIEW FPD	2,400	20	0	4	1	0	1	1	1	0	1	28	0%	\$51,100			
73334	HOMEDALE FPD	5,500	20	1	5	1	0	2	0	0	0	0	29	0%	\$0			
73336	MARSING CITY/RURAL FPD	20,000	45	0	1	3	1	0	7	0	0	0	57	0%	\$72,200			
73342	MURPHY-REYNOLDS-WILSON FPD	200	2	0	1	0	0	0	0	0	0	0	3	0%	\$0			
73320	SILVER CITY FIRE & RESCUE, INC.	15	0	0	7	0	1	3	0	0	0	0	11	0%	\$0			
	TOTALS	28,315	87	1	18	5	2	4	10	0	1	128	0	0%	\$123,300			
PAYETTE COUNTY																		
75302	FRUITLAND FD	4,406	51	1	3	7	2	8	7	0	0	0	79	0%	\$69,510			
75303	NEW PLYMOUTH FD	2,500	0	0	0	0	0	0	0	0	0	0	0	0%	\$0			
75336	NEW PLYMOUTH RURAL FD		68	2	7	11	14	28	3	0	0	0	133	0%	\$1,335,800			
75301	PAYETTE CITY FD & RURAL FPD	13,500	106	2	11	39	12	17	29	1	2	219	0%	\$580,545				1
	TOTALS	20,406	225	5	21	57	28	53	39	1	2	431	1%	\$1,985,855				

FDID	DEPARTMENT NAME	POPULATION PROTECTED	FIRE	EXPLOSIONS	EMS	HAZARDOUS CONDITION	SERVICE CALL	ASSISTED	FALSE ALARM	NATURAL DISASTER	OTHER	TOTALS	PERCENT OF TOTAL	\$ LOSS	FIRE SVC FATALITY	FIRE SVC INJURY	CIVILIAN FATALITY	CIVILIAN INJURY	
POWER COUNTY																			
77302	AMERICAN FALLS CITY FD	6,200	0	0	0	0	0	0	0	0	0	0	0	0%	\$0				
77330	AMERICAN FALLS RURAL FPD	50	0	0	0	0	0	0	0	0	0	0	0	0%	\$0				
77306	ROCKLAND RURAL FIRE DIST	3,316	0	0	0	0	0	0	0	0	0	0	0	0%	\$0				
	TOTALS	9,566	0	0	0	0	0	0	0	0	0	0	0	0%	\$0				
SHOSHONE COUNTY																			
79304	MULLAN VOL FD		0	0	0	0	0	0	0	0	0	0	0	0%	\$0				
79305	RICHARD/MURRAY VOL FIRE DIST	300	5	0	39	1	5	5	1	1	0	1	57	0%	\$30,500				
79326	SHOSHONE CO FPD #1	4,500	20	3	350	11	11	37	22	0	0	0	454	0%	\$258,600				1
79234	SHOSHONE CO FPD #2	9,000	66	3	482	20	47	86	38	0	5	747	2%	\$147,100					1
79316	SHOSHONE CO FPD #3	100	0	0	0	0	0	0	0	0	0	0	0	0%	\$0				
79310	ST. JOE VALLEY FIRE DIST	250	0	0	0	0	0	0	0	0	0	0	0	0%	\$0				
	TOTALS	14,150	91	6	871	32	63	128	61	6	1,258	6	3%	\$436,200					
TETON COUNTY																			
81334	TETON COUNTY FPD	8,000	31	0	2	51	8	37	8	0	1	138	0%	\$33,600					
	TOTALS	8,000	31	0	2	51	8	37	8	0	1	138	0%	\$33,600					
TWIN FALLS COUNTY																			
83207	BUHL RURAL FPD	10,000	89	7	24	59	21	33	26	3	0	262	0%	\$585,985					4
83340	CASTLEFORD FD	277	0	0	0	0	0	0	0	0	0	0	0	0%	\$0				
83338	FILER FD	2,200	57	0	18	36	6	36	12	0	1	166	0%	\$0					
83309	HANSEN CITY FD	900	2	0	2	4	0	2	4	0	0	14	0%	\$0					
83305	KIMBERLY FD	3,000	7	0	2	2	5	8	0	0	24	0%	\$17,600						
83334	ROCK CREEK RURAL FIRE DIST	14,000	73	1	21	87	6	39	11	0	0	238	0%	\$804,300					1
83349	SALMON TRACT RURAL FPD	750	0	0	0	0	0	0	0	0	0	0	0	0%	\$0				
83101	TWIN FALLS FD	60,000	213	1	696	1,704	95	311	250	1	40	3,311	17%	\$1,028,175					1
	TOTALS	91,127	441	9	763	1,890	130	426	311	4	41	4,015	17%	\$2,437,060					
VALLEY COUNTY																			
85302	CASCADE FD	1,005	17	0	2	3	5	12	1	0	0	40	0%	\$13,250					
85334	CASCADE RURAL FPD	2,500	23	0	253	5	18	37	1	1	3	341	1%	\$535,000					2
85304	DONNELLY VFD	3,000	29	0	212	14	27	27	19	0	1	329	0%	\$31,600					
85340	HIGH VALLEY FIRE PROTECTION ASSN	200	0	0	0	0	0	0	0	0	0	0	0	0%	\$0				
85339	MCCALL FPD	6,000	56	0	701	46	72	57	96	3	15	1,046	6%	\$272,163					
85307	SO IDAHO TIMBER PROTECTIVE ASSN		0	0	0	0	0	0	0	0	0	0	0	0%	\$0				
85359	STIBENITE FD	35	0	0	0	0	0	0	0	0	0	0	0	0%	\$0				
	YELLOW PINE VFD	250	0	0	0	0	0	0	0	0	0	0	0	0%	\$0				
	TOTALS	12,990	125	0	1,168	68	122	133	117	4	19	1,756	8%	\$652,013					
WASHINGTON COUNTY																			
87330	CAMBRIDGE FPD	1,500	0	0	0	0	0	0	0	0	0	0	0%	\$0					
87336	MIDVALE FPD	1,000	29	0	8	1	0	0	2	0	0	40	0%	\$0					
87334	WEISER AREA RURAL FPD	4,200	56	0	2	10	0	3	8	1	3	83	1%	\$273,404					1
87301	WEISER CITY FIRE & RESCUE	5,500	53	3	4	18	13	5	9	0	1	106	0%	\$29,200					
	TOTALS	12,200	138	3	14	29	13	8	19	1	4	229	2%	\$302,604					
STATE OF IDAHO TOTALS			8,389	164	45,265	4,710	4,372	10,445	6,115	90	238	79,808	100%	62,659,958			91	15	65

Glossary of Terms and Abbreviations

\$Loss - Combined estimated property and content dollar loss as reported by reporting agencies.

Alarm - Any notification made to the fire department that a situation exists or may exist requiring a response.

Arson - The crime of maliciously and intentionally or recklessly starting a fire or causing an explosion.

Automatic Extinguishing Systems (AES) - A device or system providing an emergency fire extinguishing function without the necessity of human intervention, typically a water spray.

Casualty - A person who is injured or killed at the scene of a fire or other reported incident

Cause - The circumstances or conditions that brought about or resulted in a fire or explosion incident, damage to property resulting from the fire or explosion incident, or bodily injury or loss of life resulting from the fire or explosion incident.

Civilian Fire Casualty - Any non-fire service person injured or killed as a direct result of a fire-related incident.

Confined Fire - Fire where the flame does not extend beyond a combustible container such as cooking vessels, chimneys or flues, trash containers, etc.

Contained Fire - Fire spread that is reasonably expected to remain in check under prevailing conditions.

Crop - Cultivated vegetation such as grains, trees, orchard, nursery stock, etc.

EMS - Emergency Medical Service.

Fatality - An injury that is fatal or becomes fatal within one year of the incident.

Hazardous Materials - Any material that is air-reactive, corrosive, explosive, flammable gas, organic peroxide, oxidizing material, radioactive, toxic, unstable, water-reactive, or a flammable or combustible liquid; and any substance or mixture of substance that is an irritant or a strong sensitizer or generates pressure through exposure to heat, decomposition, or other means.

Incident - An event to which the reporting agency responds or should have responded. An incident may have more than one response.

Incident Record - The official file on an incident.

Incident Report - A document prepared by fire department personnel about a particular incident.

Mobile Property - Property designed to be movable whether or not it still is, such as vehicles, ships, and airplanes.



Mutual Aid - Assistance given to or received by a fire department, whether fire or non-fire aid, by another fire department outside its normal jurisdiction.

NFIRS - National Fire Incident Reporting System.

Non-Fire Service Personnel - All persons involved with an incident who are not fire service personnel such as police, utility company employees, non-fire service medical personnel or civilians.

Origin - The physical location where a heat source and fuel came in contact with each other.

Overpressure - A transient air pressure, such as the shock wave from an explosion that is greater than the surrounding atmospheric pressure.

Prescribed Fire - Any fire ignited by management actions to meet specific objectives. A written, approved prescribed fire plan must exist prior to ignition. The controlled application of fire to wildland fuels in either their natural or modified state under specified environmental conditions allowing the fire to be confined to a predetermined area and, at the same time, to produce the intensity of heat and rate of spread required to attain planned resource management objectives.

Property Use - The actual use of the property where the incident occurred. A building, for example, could serve as a garage or a hospital or a department store. The use of property does not define any of the other important fire-related details of a property such as access, ownership, size, internal weaknesses in fire defense or construction.

Response Time - The length of time of time between notification of and arrival at an incident scene as reported by the responding agency.

Structure - An assembly of materials forming a construction for occupancy or use to serve a specific purpose. This includes, but is not limited to, buildings, open platforms, bridges, roof assemblies over open storage or process areas, tents, air-supported structures, and grandstands.

Structure Fire - Any fire inside, on, under, or touching a structure.

Wildland-Urban Interface Area - The geographical area where structures and other human development meet or intermingle with wildland or vegetative fuels.

Wildland - Land in the uncultivated more or less natural state and covered by timber, woodland, brush, or grass. An area in which development is essentially nonexistent except for roads, railroads, power lines and similar facilities.

Wildland Fire - Any involved vegetative fuel, other than prescribed fire, that occurs in wildland. A wildland fire may expose or possibly consume structures.

Idaho's Fire Departments Respond Every:

6.6 minutes
to an incident



1.1 hours to
an actual fire



12 minutes to a
medical call



4.1 hours to a structure fire



1.4 hours to a false alarm



9.5 hours to a vehicle fire



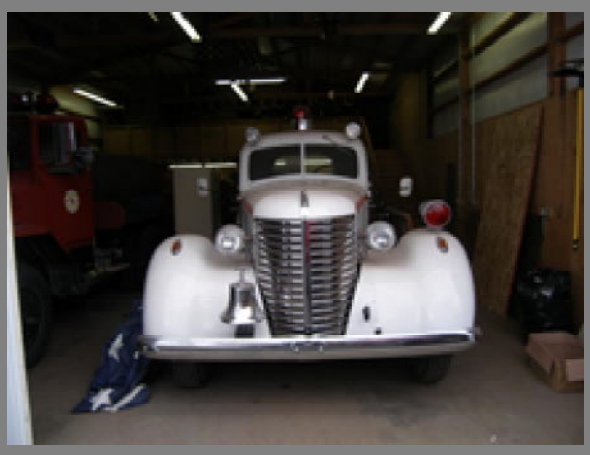
14 hours to an intentionally set fire



Fire Stations Across Idaho



Moscow City Fire Department



Riggins City Fire Department



Jerome Rural Fire Department



Parma Rural Fire District



Lewiston Fire Department - Orchard Station

2007 Wildland Fires



The following sections of this annual report show excerpts from information compiled by:

- The National Interagency Fire Center
- The Idaho Department of Lands
- The Idaho State Fire Plan Working Group

This combined information demonstrates the significant impact of wildland fires and the efforts to prevent them across the great state of Idaho. References showing how to access the complete reports from these agencies can be found on page 66.

Wildland Fire Trends - Idaho vs. USA

Calendar Year	No. of Fires (ID)	No. of Fires (USA)	% Fires	Acres Burned (ID)	Acres Burned (USA)	% Acres Burned
2007	1,415	71,953	2.0%	1,960,819	8,159,133	24.0%
2006	1,831	83,240	2.2%	933,548	9,026,770	10.3%
2005	1,154	52,813	2.2%	422,391	8,156,770	5.2%
2004	1,098	60,656	1.8%	13,981	7,736,637	0.2%
2003	1,834	49,068	3.7%	313,546	3,159,020	9.9%
2002	1,486	67,123	2.2%	84,964	6,568,979	1.3%

Calendar Year	Primary Structures (ID)	Primary Structures (USA)	% Structures Burned	Commercial Structures (ID)	Commercial Structures (USA)	% Commercial Structures Burned	Outbuildings (ID)	Outbuildings (USA)	% Outbuildings Burned
2007	24	658	4%	0	43	0%	82	1,178	7%
2006	3	728	0%	2	67	3%	17	1,536	1%
2005	1	342	0%	4	21	19%	10	693	1%
2004	1	340	0%	0	20	0%	0	819	0%
2003	10	4,088	0%	0	49	0%	54	1,638	3%
2002	0	1,090	0%	0	85	0%	0	1,643	0%

Percentages (%) show statistics of Idaho fires in relationship to USA fires.

Statistics provided by Brett Ingles, Research Associate of Boise State University Office of Environmental Science and Public Policy Research Institute (ESPRI).

Cascade Complex Fire



Castlerock Fire

One of many education resources developed by the ISFPWG.

YOUR FUELS...



YOUR PROBLEM...



YOUR LOSS!

PROTECT YOUR HOME FROM WILDFIRE - CREATE DEFENSIBLE SPACE



**VISIT US ON
THE WEB**

www.idahofireplan.org



A Message from Idaho's State Forester, George B. Bacon



Wildfires scorched 1.9 million acres in Idaho in 2007. It was one of the worst fire seasons on record in our State and one of the longest; major fires burned from July into October. Nationally, fires burned 9.3 million acres and cost more than \$1.8 billion, the second costliest season on record. With larger, longer fires, the firefighting resources available are not enough to handle situations managers are being faced with. It is more critical than ever for communities and homeowners to take responsibility to prepare for wildfire.

In Idaho, we have made substantial progress with the National Fire Plan. County Wildfire Protection Plans (CWPPs) are in place for all 44 counties. We have active state and county interagency working groups in most counties. Since 2001, 1.25 million acres of hazardous fuels have been treated across ownerships in Idaho. Over 12,000 structures have been protected with National Fire Plan grants. Thirty-one million dollars have been invested in firefighting resources, providing equipment and training to fire departments throughout Idaho. We've developed strong wildfire education programs, raising citizen awareness and promoting action in communities statewide.

The 2007 fire season provided several examples of the success of community preparation work. Fires near White Bird, Warm Lake, Secesh, and Ketchum threatened homes and property. Mitigation projects and other preparation by these communities paid off when many homes came through these intense fires intact. One of these stories - the Deer Creek Subdivision - is featured in a professionally produced video that will be distributed by the State Working Group in summer, 2008.

We've accomplished a lot, but there's much more to do. In 2008, we will host a statewide wildfire conference in Boise to help us move to the next level with the National Fire Plan. Idaho's wildfire community will gather to explore ways to expand restoration, protection, and education efforts in the state. The State Fire Plan Working Group will continue to support County Working Groups in identifying and completing priority mitigation work. Education efforts will be brought together in a unified program for effective delivery at state and local levels. Idaho's *Keep Idaho Green* prevention program is being recharged, and we're enhancing the Idaho National Fire Plan website to provide a forum for Idaho's county officials and fire managers to connect and share with each other. In addition, a statewide assessment of conditions and threats is being compiled that will lead to a state restoration and protection strategy.

The County Working Groups are the backbone of the State's National Fire Plan strategy. The collaborative work of these local groups is progressively making communities safer and more resilient to wildfire. In Idaho, we will continue living with wildfire as a way of life. It's essential that we all understand our responsibilities and keep up the great work on the National Fire Plan.

George B. Bacon
Idaho State Forester

Executive Summary

Idaho National Fire Plan Progress in 2007



Hazardous Fuels Treatments:

- **IDL 2007 National Fire Plan Grants for Private Land Treatments**
 - \$1,378,820 awarded to Benewah, Blaine, Boise, Bonner, Boundary, Clearwater, Elmore, Idaho, Kootenai, Lemhi, and Shoshone Counties
 - In 2007, 2,976 acres were treated on private lands in Idaho
 - 16,288 acres have been completed since project funding began in 2001
- **Forest Service Treatments (R1 and R4)** - 74,656 acres treated, including 34,568 WUI acres
- **BLM Treatments** - 93,668 acres treated, including 66,242 WUI acres
- **Fish & Wildlife Service Treatments** - 8,904 acres treated, including 5,663 WUI acres
- **Nez Perce Tribe Treatments** - 2,170 acres treated, including 850 WUI acres
- **Coeur d'Alene Tribe Treatments** - 3,017 WUI acres treated
- **Shoshone-Bannock Tribe (Ft. Hall) Treatments** - 355 acres treated, including 6 WUI acres

Firefighting Resources:

- **IDL 2007 Volunteer Fire Assistance Grants** - \$207,083 awarded to 71 Fire Departments and Districts
- **BHS (FEMA)** - \$2,297,144 awarded in Assistance to Firefighters grants throughout Idaho
- **IFCA** - \$55,534 awarded to Idaho's fire departments and districts through the Firefighters License Plate Fund grant program

Community Assistance:

- **BLM** - \$500,000 (Approximately) - Statewide
- **BIA** - \$25,000 - Kamiah Fire Department

Program Highlights:

- CWPP Updates Completed for 14 Counties
- Several Counties had Interagency, Post-Fire Season Reviews
- Statewide Risk Assessment Completed
- Communications Plan Completed
- Education and Prevention Tools and Training Developed
- Mitigation Projects Prioritized - Region 4 Above Base Projects and IDL Grants for Implementing County Wildfire Protection Plan Projects
- State Biomass Utilization Efforts Supported—Including \$684,000 in FS Economic Assistance
- State Working Group Members Participated in County Working Group Meetings and Field Trips in 18 Counties

Success Stories:

Examples of fuels treatments making a difference in community wildfire protection...

- | | |
|---------------------------|-----------------------------------|
| Secesh—Idaho County | Pine & Featherville—Elmore County |
| Warm Lake—Boise County | Hughes Creek—Lemhi County |
| Deer Creek—Idaho County | Pocatello—Bannock County |
| Cub River—Franklin County | Wallace—Shoshone County |

Developing for the Future:

- **GIS Mapping:** WUI and Project Maps on ISFPWG Website
- **Keep Idaho Green:** Recharging education and prevention message and outreach
- **Fire Research and Management Exchange System (FRAMES):** Communications tool
- **“Are We Safe from Fire? Protecting Idaho’s Communities”:** Video project in production
- **Living on the Edge:** DVD and training sessions available in 2008
- **State Assessment:** Compiling a statewide restoration and protection strategy
- **Idaho National Fire Plan Conference:** Planning a gathering of the statewide wildfire mitigation community October 8 & 9, 2008, in Boise

The Idaho State Fire Plan Working Group

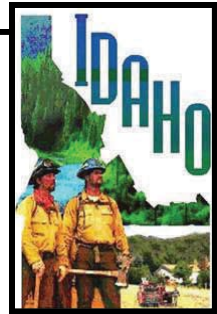
The Idaho State Fire Plan Working Group (ISFPWG) is a multi-agency collaborative body that provides information, oversight, and other support to counties and agencies in implementing the National Fire Plan in Idaho.

The State Working Group met three times in 2007. Accomplishments included support and prioritization of National Fire Plan projects, an assessment of state risk, increased statewide communication, revitalization of state prevention and education program, development of a new education video, and “Living on the Edge” training. In 2007, ISFPWG members participated in County Working Group meetings and field trips in the following counties: Boundary, Bonner, Kootenai, Benewah, Shoshone, Clearwater, Latah, Nez Perce, Lewis, Idaho, Adams, Valley, Elmore, Clark, Fremont, Bonneville, Bannock, and Lemhi.

For meeting notes and other information on the Idaho State Fire Plan Working Group, please visit our website: www.idahofireplan.org

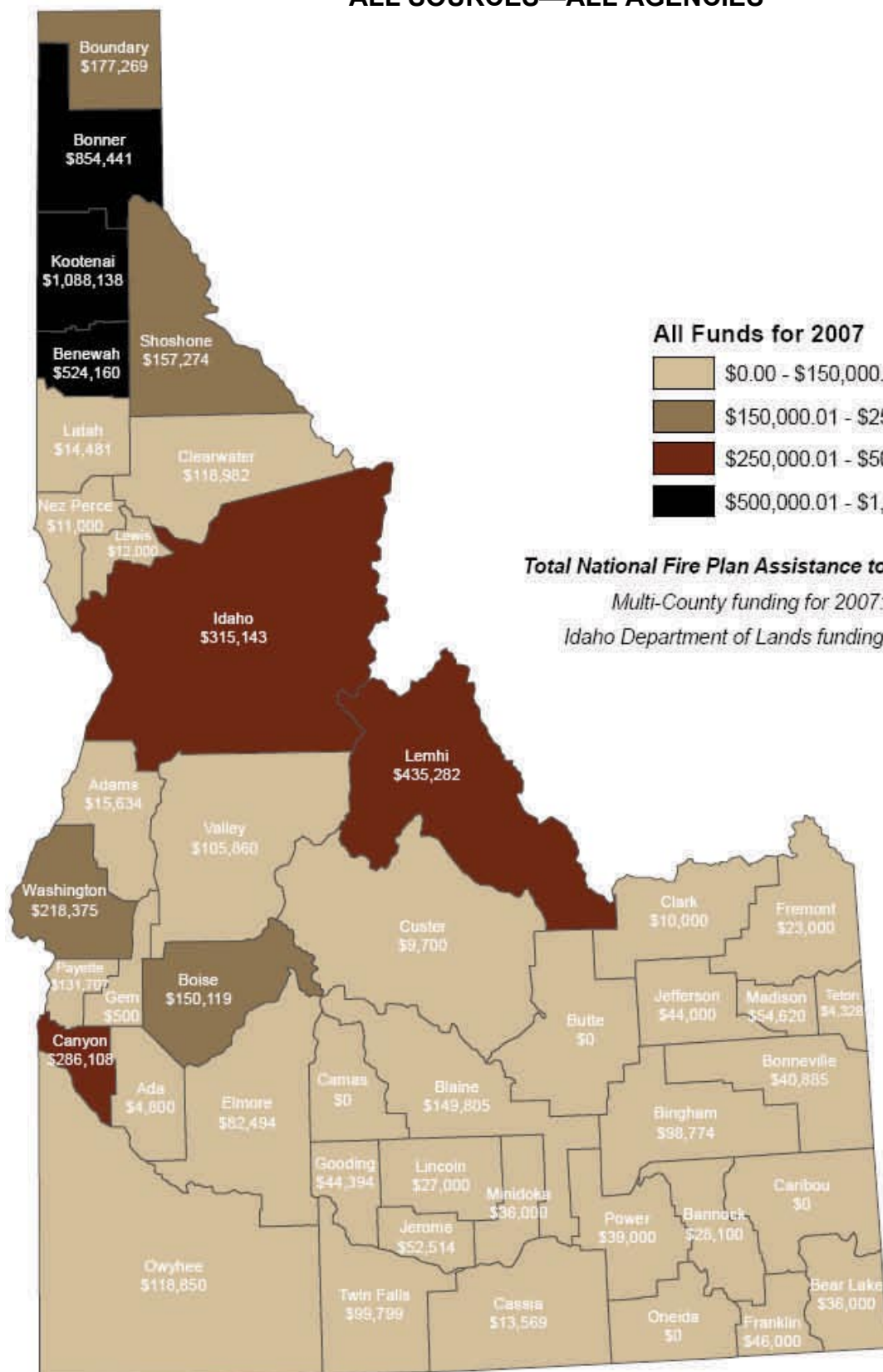
2007 Members of the Idaho State Fire Plan Working Group:

Steve Kimball *National Fire Plan Coordinator*
 Brian Shiplett *Idaho Department of Lands*
 David Jackson..... *Idaho Bureau of Homeland Security*
 Mark Larson *Idaho State Fire Marshal*
 Jerry Miller..... *Idaho Department of Commerce*
 Mark Compton..... *Office of the Governor*
 Dean Ellis..... *Idaho Fire Chiefs Association*
 Dr. Robert Cope *Idaho Association of Counties*
 Joe Daniels *Idaho Association of Counties*
 Dave Hasz *Idaho Emergency Management Association*
 Len Diaz *USDI Bureau of Indian Affairs*
 Leonard Wehking..... *USDI Bureau of Land Management*
 Dennis Seidman..... *USDI Fish and Wildlife Service*
 Bob Appling *USDI National Park Service*
 Gary Jarvis *USDA Forest Service, Intermountain Region*
 Pat Garbutt *USDA Forest Service, Northern Region*
 Tim Droegmiller *Nez Perce Tribe*
 Patrick Warker..... *Coeur d’Alene Tribe*
 Russ Manwaring *Idaho Resource Conservation and Development Councils (RC&Ds)*



National Fire Plan Funding 2007

ALL SOURCES—ALL AGENCIES



All Funds for 2007

- \$0.00 - \$150,000.00
- \$150,000.01 - \$250,000.00
- \$250,000.01 - \$500,000.00
- \$500,000.01 - \$1,088,137.69

Total National Fire Plan Assistance to Idaho: \$6,086,581.70

Multi-County funding for 2007: \$316,476.00

Idaho Department of Lands funding for 2007: \$15,000.00

Hazardous Fuels Treatments

Hazardous fuels treatments include mechanical thinning, hand thinning, prescribed burning, removal of slash pilings, chemical treatments, and logging that removes hazardous fuels (removal of dead, diseased, insect-infested trees, or trees that create continuous fuels that could threaten structures or property). Funds used to hire county or multi-county level hazardous fuels coordinators and contractors are also considered hazardous fuels treatment funds.

Private Lands

Hazardous Fuels Funds Awarded for Work on Private Lands in Idaho			
Agency	HFT Program	2007 Funding	2001-2007 Funding
Bureau of Indian Affairs	BIA Community Assistance	\$25,000	\$591,829*
Bureau of Land Management	BLM Community Assistance	\$560,700	\$3,996,838**
US Fish and Wildlife Service	FWS Community Assistance	\$0	\$242,147
Idaho Department of Lands/ Forest Service	IDL/FS Western States Fire Managers	\$1,045,000	\$9,206,658
Idaho Department of Lands/ Forest Service	IDL/FS Community Fire Protection	\$210,123	\$2,211,331
Idaho Department of Lands/ Bureau of Land Management	IDL/BLM Partnership Funds	\$218,697	\$435,697
Other HFT Programs 2001-2007		\$0	\$160,000
TOTAL		\$2,115,520	\$16,844,500
<p><i>*BIA Community Assistance funds primarily benefit private residences located within or adjacent to a tribal boundary.</i></p> <p><i>**Total funding for all BLM Community Assistance actions (planning, hazardous fuels, biomass) is \$595,700 for FY2007 and \$10,949,188 for FY2001-2007.</i></p>			

Tribal Lands

Hazardous Fuels Funds Expended on Tribal Lands in Idaho

Idaho's tribes receive direct funding from the Bureau of Indian Affairs for Hazardous Fuels Reduction.

Hazardous Fuels Acres Treated on Tribal Lands in Idaho

FY2007: 5,542 acres

FY2003-2007: 24,037 acres

Hazardous Fuels Funds Expended on Tribal Lands in Idaho

Tribe	2007 HFR/WUI Funding
Coeur d'Alene	\$1,356,000
Nez Perce	\$544,000
Shoshone-Bannock (Fort Hall)	\$162,000
TOTAL	\$2,062,000
Data obtained from the National Fire Plan Operations Reporting System (NFPORS).	

State & Federal Lands

Hazardous Fuels Acres Treated on Federally Managed Lands in Idaho

Agency	WUI Acres	Non-WUI Acres	Total FY2007
Bureau of Land Management	66,242	27,426	93,668
US Fish and Wildlife Service	5,663	3,241	8,904
USDA Forest Service	34,568	40,088	74,656
TOTAL	106,473	70,755	177,228

Data obtained from the National Fire Plan Operations Reporting System (NFPORS) and the Forest Service Activity Tracking System (FACTS) databases. Table above does not include 186,846 Wildland Fire Use acres reported by the Forest Service for FY2007.

Firefighting Assistance Programs

Firefighting assistance includes a number of programs that provide funding to fire districts, departments, or other wildfire suppression organizations. Firefighting assistance can include personal protective equipment, training, communications equipment, assistance with the creation of new fire districts, as well as larger items such as firefighting vehicles or buildings.

2007 Firefighting Assistance Funding in Idaho			
Agency	Assistance Program	2007 Funding	2001-2007 Funding
Federal Emergency Management Agency (FEMA)	Assistance to Firefighters Grants	\$2,297,144	\$24,323,528
Idaho Department of Lands/USDA Forest Service	Volunteer Fire Assistance (VFA)	\$220,734	\$1,348,280
Idaho Fire Chiefs Association	Firefighter's License Plate Fund	\$55,534	\$257,286
US Department of Interior	Rural Fire Assistance	\$0	\$4,696,241
Other Firefighting Assistance Programs 2001-2007		\$0	\$408,456
TOTAL		\$2,573,412	\$31,033,791

Wildland Fire Planning and Assessment

The predominant planning tool used by the Idaho State Fire Plan Working Group is the County Wildfire Protection Plan (CWPP). Pre-Disaster Mitigation Plans and other local and tribal assessments have also been utilized. This section provides an overview of planning activities in 2007.

2007 Planning and Assessment Funding in Idaho			
Agency	Assistance Program	2007 Funding	2001-2007 Funding
Bureau of Land Management	Community Assistance	\$30,000	\$6,936,350*
Idaho Bureau of Homeland Security	Mitigation Funds	\$349,570	\$1,471,994
Other Planning Programs 2001-2007		\$0	\$617,158
TOTAL		\$379,570	\$9,025,502
<small>*Community Assistance is used to fund a number of actions, including planning. If a single award includes funding related to hazardous fuels treatments as well as planning, the entire award is included as hazardous fuels treatment funds.</small>			

Biomass/ Small Wood Utilization

Biomass utilization refers to removal and use of woody debris or other wood materials for fuel, chips, or other products. Small wood utilization refers to removal use of small-diameter timber for commercial products. These programs provide uses and jobs from materials removed through hazardous fuels reduction programs.

2007 Biomass/Small Wood Utilization Funding in Idaho		
Project Description	FY2007 Funding	FY2001-2007 Funding
USDA Forest Service Economic Action	\$684,000	\$1,856,993
USDA Forest Service Fuels for Schools*	\$250,000	\$1,350,000
BLM Community Assistance	\$10,000	\$10,000
TOTAL	\$944,000	\$3,216,993
<i>*Fuels for Schools is part of the Forest Service's Economic Action Program but is listed separately here.</i>		

Bureau of Land Management Community Assistance

As described previously, Community Assistance actions can be used towards a number of different actions. In FY2007, BLM provided \$10,000 to a nonprofit group in Idaho County towards a Cogeneration Feasibility Study.

Idaho Bureau of Homeland Security—Assistance Statewide



During the 2007 Fire Season, Idaho Bureau of Homeland Security secured three Fire Management Assistance Grants (FMAG) by working with Idaho Department of Lands to help recover some state and local costs associated with wildfire suppression.

- FM 2724: Castle Rock Fire estimated \$2-5 Million
- FM 2725: East Zone Complex estimated \$200,000
- FM 2726: Cascade Complex estimated \$200,000

The 2007 update to the State of Idaho Hazard Mitigation Plan was approved by FEMA Region X on November 2, 2007. This plan provides a statewide comprehensive strategy to reduce future potential losses from all natural hazards including wildfire. FEMA approved All-Hazard Mitigation Plans for Boundary County, Canyon County, and Caribou County.

The complete 2007 Annual Report for the Idaho State Fire Plan Working Group can be found at

<http://www.idahofireplan.org/images/2007%20Annual%20Report.pdf>.

Statistics from National Fire Interagency Fire Center

1999-2007 Large Fires (100,000+ fires)

Year	Fire Name	Location	Size in Acres
2007	Murphy Complex	BLM Tw in Falls District	652,016
2007	Cascade Complex	Boise National Forest	302,376
2007	East Zone Complex	Payette National Forest	300,022
2006	Crystal	BLM Idaho Falls District	220,042
2005	Clover	BLM Tw in Falls District	192,846
2000	Clear Creek	Salmon-Challis National Forest	216,961
2000	Eastern Idaho Complex	BLM Idaho Falls District	192,450
2000	SCF Wilderness	Salmon-Challis National Forest	182,600
2000	Diamond	Payette National Forest	149,772
1999	Mule Butte	BLM Aberdeen	138,915

2007 on Fires and Acres Burned in Idaho and Nationally

State	Wildland		Prescribed Burn		Wildland Fire Use	
	# Fires	# Acres	# Fires	# Acres	# Fires	# Acres
Idaho	1,473	1,980,552	518	47,000	73	199,217
USA	85,822	9,321,326	24,069	3,148,093	346	430,5

Prescribed Fire

Any fire ignited by management actions to meet specific objectives. A written, approved prescribed fire plan must exist, and NEPA requirements (where applicable) must be met, prior to ignition.

Wildland Fire Use

The application of the appropriate management response to naturally-ignited wildland fires to accomplish specific resource management objectives in pre-defined designated areas outlined in Fire Management Plans. Operational management is described in the Wildland Fire Implementation Plan.

The above charts and information are excerpts from the National Interagency Fire Center website at <http://www.nifc.gov/>.

**IDAHO DEPARTMENT OF LANDS
YEAR END FIRE REPORT
FOR CALENDAR YEAR (CY) 2007**

SEASON IN REVIEW

The 2007 fire season was below the 25-year average in terms of fire occurrence. On lands for which the Idaho Department of Lands (IDL), Clearwater Potlatch Timber Protective Association (CPTPA), and Southern Idaho Timber Protective Association (SITPA) provide wildland fire protection, fire fighters responded to 349 fires (88 percent of average). These fires burned 68,674 acres, which is about six times the average acreage burned.

Quick response by dedicated teams of firefighters kept 92 percent of these fires less than 10 acres.

Human activity ignited 238 fires (68 percent of the year's total) and accounted for nine percent of the burned area, or 5,930 acres. The miscellaneous category started the most person-caused fires, but arson fires burned the most area. Arson was also the most expensive human-caused category.

Lightning started 111 fires (32 percent of the year's total) and burned 62,744 acres, or 91 percent of the total area.

The average fire size was 197 acres, which is six times the 25 year average. The median fire size was 0.2 acres, which is double our usual. The average fire cost was \$51,958, and the cost per acre was \$264.

TEN LARGEST FIRES IN 2007

Fire Name	District	Size	Total Cost
Chimney Complex	Craig Mountain FPD	51,000	\$7,904,286
Poe Cabin*	Craig Mountain FPD	5,852	\$1,227,581
Dry Creek	Craig Mountain FPD	5,700	\$1,414,766
Chief Parrish	Southwest Idaho FPD	3,736	\$2,602,734
Echo Springs	West St. Joe FPD	505	\$1,235,873
O-7	Maggie Creek FPD	288	\$305,052
Russell Ridge	Maggie Creek FPD	250	\$346,121
Evergreen	Craig Mountain FPD	208	\$87,067
Vollmer Fire	Craig Mountain FPD	155	\$5,002
Kendrick	Ponderosa FPD	100	\$207,840
Total		67,794	\$15,336,321

TEN MOST EXPENSIVE FIRES

Fire Name	District	Size	Total Cost
Chimney Complex	Craig Mountain FPD	51,000	\$7,904,286
Chief Parrish	Southwest Idaho FPD	3,736	\$2,602,734
Dry Creek	Craig Mountain FPD	5,700	\$1,414,766
Echo Springs	West St. Joe FPD	505	\$1,235,873
Poe Cabin*	Craig Mountain FPD	5,852	\$1,227,581
Mountain Chief	Southwest Idaho FPD	24	\$617,616
Russell Ridge	Maggie Creek FPD	250	\$346,121
North Fork	SITPA	80	\$319,228
O-7	Maggie Creek FPD	288	\$305,052
Moyie	Kootenai Valley FPD	20	\$220,444
Total		67,455	\$16,193,701

*Poe Cabin statistics are only for the area within the IDL protection area.
The entire fire burned 58,520 acres and cost \$10,715,792.

NUMBER OF FIRES BY CAUSE, WITH COSTS

General Cause	# of Fires	% of Fires	Total Cost	% of Cost	Cost / Fire
Lightning	111	32%	\$12,073,511	67%	\$108,770
Miscellaneous	87	25%	\$964,702	5%	\$11,089
Debris Burning	68	19%	\$282,267	2%	\$4,151
Equipment Use	28	8%	\$1,857,458	10%	\$66,338
Campfire	23	7%	\$28,673	0%	\$1,247
Arson	19	5%	\$2,679,843	15%	\$141,044
Smoking	7	2%	\$244,502	1%	\$34,929
Children	5	1%	\$1,323	0%	\$265
Railroad	1	0%	\$890	0%	\$890
Total Human	238	68%	\$6,059,657	33%	\$25,461
Grand Total	349	100%	\$18,133,168	100%	\$51,958

ACRES BURNED BY CAUSE, WITH COSTS

General Cause	Acres Burned	% of Acreage	Total Cost	Cost / Acre	Bill Amount	Amount Collected
Lightning	62,744	91%	\$12,073,511	\$ 192	\$0	\$0
Arson	3,767	5%	\$2,679,843	\$ 711	\$1,114	\$0
Equipment Use	905	1%	\$1,857,458	\$ 2,053	\$22,774	\$366
Miscellaneous	730	1%	\$964,702	\$ 1,321	\$66,062	\$1,401
Debris Burning	496	1%	\$282,267	\$ 570	\$158,749	\$50,964
Smoking	23	0%	\$244,502	\$ 10,733	\$858	\$0
Campfire	8	0%	\$28,673	\$ 3,584	\$1,837	\$465
Children	1	0%	\$1,323	\$ 945	\$951	\$327
Railroad	0	0%	\$890	\$ 8,901	\$196	\$196
Total Human	5,930	9%	\$6,059,657	\$ 1,022	\$252,540	\$53,719
Grand Total	68,674	100%	\$18,133,168	\$ 264		

CAUSES BY DISTRICT

District	# of Fires	Lightning	Misc	Debris Burning	Equip Use	Camp Fire	Arson	Smoking	Children	Rail Road
Pend Oreille FPD	53	10	11	22	2	1	4	2		1
CPTPA	49	10	24	4	2	4	4	1		
SITPA	48	19	7	6	2	11	1	1	1	
West St. Joe FPD	38	19	2	10	5	1			1	
Mica FPD	36	5	14	10	1		3	1	2	
Maggie Creek FPD	28	12	6	4	2	1	2		1	
Craig Mountain FPD	25	8	8	5	3		1			
Southwest Idaho FPD	24	15	3	1	3	1	1			
Kootenai Valley FPD	17	4	4	3	4	1		1		
Ponderosa FPD	13	5	5	1	1			1		
Cataldo FPD	11	3	2	1	1	1	3			
Priest Lake FPD	7	1	1	1	2	2				
Total	349	111	87	68	28	23	19	7	5	1

DISTRICT ACRES BY CAUSE

District	# of Acres	Lightning	Arson	Equip Use	Misc	Debris Burning	Smoking	Camp Fire	Children	Rail Road
Craig Mountain FPD	63,137.9	62,558.3	2.7	104.5	170.8	301.6				
Southwest Idaho FPD	3,786.1	30.4	3,736.0	16.1	0.6	2.9		0.1		
Maggie Creek FPD	670.7	39.3	0.6	250.1	357.5	19.8		3.3	0.1	
West St. Joe FPD	580.3	14.9		508.9	0.0	53.9		1.6	1.0	
Ponderosa FPD	128.5	5.6		1.5	117.3	4.0	0.1			
SITPA	95.2	86.3	0.1	0.2	3.6	1.5	1.7	1.7	0.1	
CPTPA	93.7	2.0	9.8	4.5	25.7	50.9	0.5	0.4		
Mica FPD	84.8	0.5	7.7	3.0	48.2	24.9	0.3		0.2	
Pend Oreille FPD	49.9	1.6	10.3	5.4	2.7	29.5	0.2	0.1		0.1
Kootenai Valley FPD	43.8	4.2		10.4	2.9	6.2	20.0	0.1		
Cataldo FPD	2.4	0.5	0.3	0.1	1.0	0.1		0.5		
Priest Lake FPD	1.3	0.5		0.2	0.1	0.3		0.2		
Total	68,674.4	62,744.0	3,767.5	904.8	730.4	495.5	22.8	8.0	1.4	0.1

SUPPRESSION COST PER ACRE

District	# of Acres	Suppression Cost	District Cost / Acre
Cataldo FPD	2	\$24,951	\$10,268
Kootenai Valley FPD	44	\$322,843	\$7,373
Priest Lake FPD	1	\$6,908	\$5,527
SITPA	95	\$460,948	\$4,842
CPTPA	94	\$324,961	\$3,467
West St. Joe FPD	580	\$1,478,753	\$2,548
Ponderosa FPD	128	\$293,536	\$2,285
Pend Oreille FPD	50	\$103,240	\$2,069
Maggie Creek FPD	671	\$792,171	\$1,181
Mica FPD	85	\$89,260	\$1,053
Southwest Idaho FPD	3,786	\$3,412,929	\$901
Craig Mountain FPD	63,138	\$10,822,670	\$171
Total	68,674	\$18,133,168	\$264

SUPPRESSION COST PER FIRE

District	# of Fires	Suppression Cost	District Cost / Fire
Craig Mountain FPD	25	\$10,822,670	\$432,907
Southwest Idaho FPD	24	\$3,412,929	\$142,205
West St. Joe FPD	38	\$1,478,753	\$38,915
Maggie Creek FPD	28	\$792,171	\$28,292
Ponderosa FPD	13	\$293,536	\$22,580
Kootenai Valley FPD	17	\$322,843	\$18,991
SITPA	48	\$460,948	\$9,603
CPTPA	49	\$324,961	\$6,632
Mica FPD	36	\$89,260	\$2,479
Cataldo FPD	11	\$24,951	\$2,268
Pend Oreille FPD	53	\$103,240	\$1,948
Priest Lake FPD	7	\$6,908	\$987
Total	349	\$18,133,168	\$51,958

MULTIPLE FIRES PER DAY

District	Total # Multi Fires	# of Days with Multi Fires	Most Fires in 1 Day
CPTPA	30	11	5
West St. Joe FPD	18	6	5
SITPA	18	8	4
Pend Oreille FPD	16	8	2
Southwest Idaho FPD	14	5	5
Maggie Creek FPD	12	4	5
Mica FPD	6	3	2
Craig Mountain FPD	6	3	2
Kootenai Valley FPD	5	2	3
Cataldo FPD	5	2	3
Ponderosa FPD	2	1	2
Priest Lake FPD	0	0	1
Total	132	53	

NUMBER OF FIRES WITH AIRCRAFT USE, BY DISTRICT

District	Air Tankers Used	Helicopters Used
Craig Mountain FPD	27	50
Maggie Creek FPD	18	21
SITPA	12	13
West St. Joe FPD	10	9
Southwest Idaho FPD	8	29
Ponderosa FPD	7	5
Kootenai Valley FPD	6	8
CPTPA	6	19
Pend Oreille FPD	2	4
Priest Lake FPD	0	2
Mica FPD	0	3
Cataldo FPD	0	1
Total	96	164

This matrix illustrates the number of aircraft used on fires in the District. It does not reflect the amount of use per fire.

To access the complete 2007 Idaho Department of Lands Annual Report go to http://www.idl.idaho.gov/bureau/FireMgt/rpt2007end/yr_end_2007fire_rpt.pdf.

Referenced Website Links

Idaho Department of Lands

http://www.idl.idaho.gov/bureau/FireMgt/rpt2007end/yr_end_2007fire_rpt.pdf

Idaho State Fire Plan Working Group 2007 Annual Report

<http://www.idahofireplan.org/images/2007%20ANNUAL%20REPORT.pdf>

National Interagency Fire Center Fire Information – Wildland Fire Statistics

http://www.nifc.gov/fire_info/fire_stats.htm

State Fire Marshal

<http://www.doi.idaho.gov/sfm/firemars.aspx>

State of Idaho Capitol Building Restoration and Addition Project Web Cam

http://www.nifc.gov/fire_info/fire_stats.htm

Fire Stations Across Idaho



Montpelier Fire Department



Rupert City and East End



Cascade Rural Fire District - Smiths Ferry



Sam Owen Fire District



Winchester Fire Department

A very special "thank you" to those who shared their expertise, data and pictures in the making of this report:

Idaho Fire Departments
Office of State Fire Marshal
Department of Insurance
National Fire Information Council
National Interagency Fire Center
Idaho Department of Lands
Idaho State Fire Plan Working Group

Front cover photo of Cascade, Idaho, fire taken by a Valley county Sheriff Deputy.

Costs associated with this publication are available at the office of the Idaho State Fire Marshal. This report is available in electronic format through the Department of Insurance website: <http://www.doi.idaho.gov>.

Idaho State Fire Marshal
700 West State Street
P. O. Box 83720
Boise, Idaho 83720-0043

