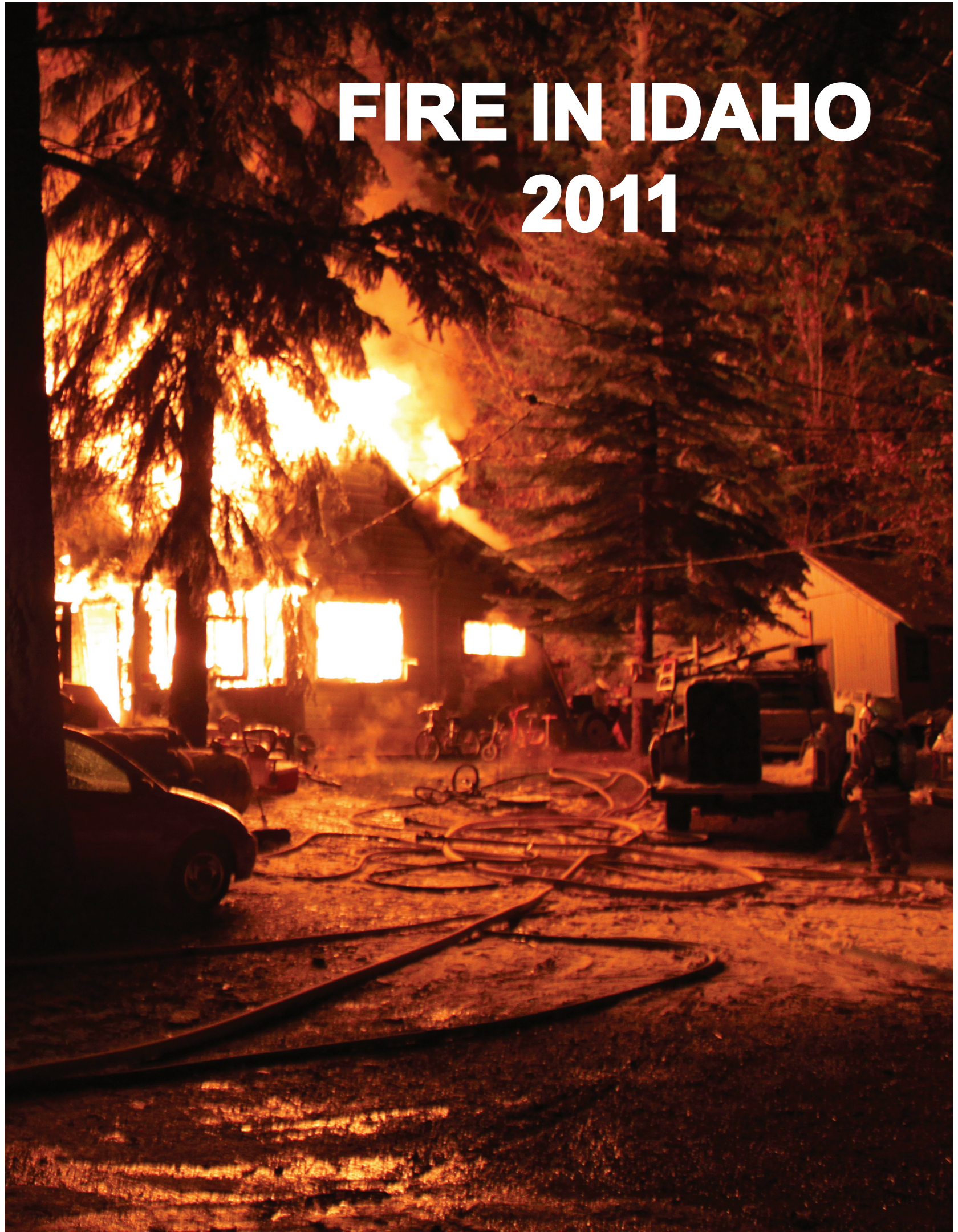


FIRE IN IDAHO 2011





9/11 Memorial: *To Lift a Nation* sculpture at the National Fallen Firefighter Memorial Park located on the campus of the National Fire Academy in Emmitsburg, Maryland.

State of Idaho
DEPARTMENT OF INSURANCE

C.L. "BUTCH" OTTER
Governor

700 West State Street, 3rd Floor
P.O. Box 83720
Boise, Idaho 83720-0043
Phone (208)334-4370
FAX # (208)334-4375

WILLIAM W. DEAL
Director

MARK LARSON
State Fire Marshal

July 1, 2012

Honorable C. L. "Butch" Otter
Governor, State of Idaho
Statehouse
Boise, ID 83720

Dear Governor Otter,

The 2011 edition of the annual report from the State Fire Marshal's Office is based on information submitted by municipal fire departments and fire districts and associations statewide. We have also included statistics from state and federal fire response agencies in this document.

The reporting fire agencies show responses to almost 90,000 calls for service in 2011. Over 6,000 of those responses were to fires or explosions. Sadly, 21 Idahoans lost their lives in fires in 2011. No firefighters perished responding to their fellow citizens' calls for assistance, but 61 were injured in those efforts.

There were no catastrophic losses due to major wildland fires in 2011. However, the events in June and July of 2012 demonstrate just how quickly uncontrolled fires in the wildland urban interface can spread and are a horrific reminder of how delicate the balance between fire safe and disaster can be.

Fire safety in our homes, businesses, public buildings and neighborhoods needs constant attention. Citizens, government officials and firefighters must continue to work together to help ensure the safety of us all.

I give my thanks to my staff for their efforts in compiling this report and to all the agencies for submitting their information.

Respectfully submitted,



Mark Larson
State Fire Marshal



**Governor
C.L. "Butch" Otter**

**Department of Insurance
William W. Deal, Director**

**Idaho State Fire Marshal
Mark Larson**



Mission Statement

The State Fire Marshal's Office participates in and coordinates an integrated statewide system designed to protect human life from fire and explosions through fire prevention and the investigation of fires. The program involves fire prevention activities, arson investigations, and the operation of various statistical systems, including the Idaho Fire Incident Reporting System.

**Visit the Idaho State Fire Marshal's website at
<http://www.doi.idaho.gov/sfm/firemars.aspx>**

Table of Contents

STATE FIRE MARSHAL DIVISION

Customer Service	2
State Fire Marshal Staff/District Map.....	3
Fires Investigated/Inspections and Plan Reviews.....	4
Idaho State Fire Marshal Classes.....	6
Certification and Licensing.....	8

INCIDENT SUMMARY STATISTICS

Summary of Statistics

Incident Summary.....	10
Incident Responses by Month, Day and Hour.....	11
Top 10 Incident Types by Incident Categories.....	12
Five-Year Trends.....	14
Fire Calls by Month and Day of Week.....	16
Fires in Idaho.....	17
Comparisons of 2010 and 2011 County Populations and Reported Incidents.....	18

Structure Fires

Areas of Origin for Residential Structure Fires.....	20
Residential Structure Fire Spread.....	21
Top 10 Large Dollar Loss Structure Fire Events.....	22
Structure Fires by Property Use.....	23
Smoke Detector Performance.....	28
Automatic Extinguishing Systems.....	29

Civilian Fire Casualties

Civilian Fire Casualty Statistics.....	30
Civilian Fire Fatalities.....	32

Fire Service Casualties

Fire Service Injuries.....	34
Fire Service Injuries by Incident Type/Severity of Injuries.....	35

DEPARTMENT LISTINGS

Importance of Data Quality Control.....	38
Reporting Trends.....	39
Departments NOT Reporting.....	41
Reporting Departments.....	42

Glossary of Terms	50
--------------------------------	----

Fire Department Information by County	53
--	----

Wildland Fires

Wildland Fire Trends - Idaho vs. USA.....	62
Idaho Department of Lands 2011 Year-End Fire and Annual Reports.....	63
Statistics from National Fire Interagency Center.....	69



Customer Service

Through our offices in Boise, Coeur d'Alene, Idaho Falls and Moscow, our staff of nine dedicated individuals works with a broad spectrum of customers in both the public and private sectors.

By statute, we are responsible for:

- Adoption of the fire code as a minimum standard for the state
- Prescribing regulations and making rules related to the fire code
- Plan review on all new and remodeled state buildings for compliance with adopted fire codes
- Inspecting/testing new fire sprinkler systems and fire alarm systems in all new and remodeled state buildings
- Collecting information on all fires in Idaho
- Regulating the fire sprinkler industry
- Reviewing all plans for single service fire sprinkler systems installed in Idaho
- Licensing fireworks wholesale and import businesses
- Compliance by cigarette manufacturers with Idaho's law for reduced ignition propensity by ensuring cigarettes sold in Idaho meet the required safety standards
- Training and certification provided to local authorities who apply the provisions of the adopted statewide fire code
- Serving as an avenue for appealing local code application decisions as provided by Idaho law
- Serving as the chief arson investigator for the state of Idaho

We also provide assistance to our customers by:

- Assisting local fire jurisdictions with plan reviews, inspections and code interpretation
- Conducting classes in fire investigation, code application and incident reporting
- Answering questions and providing statistical research for:
 - Architects
 - Engineers
 - Fire code officials
 - Developers
 - Attorneys
 - Elected officials
 - Law enforcement
 - Individual citizens
- Participating in numerous arson task forces throughout the state as well as regional fire chiefs' associations
- Active involvement in the development of national fire and life safety standards
- Serving as an active member of the Idaho Lands Resource Coordinating Council
- Working with the Northwest Insurance Council to establish the Arson Hotline and a reward-for-information program



Idaho State Fire Marshal Staff

Mark Larson, State Fire Marshal
Nesha Pabst, Administrative Assistant
Cheryl Karnowski, IFIRS Program Coordinator
700 West State Street, 3rd Floor
Boise, ID 83720-0043
208-334-4370

Fire Origin and Cause Investigation

District I

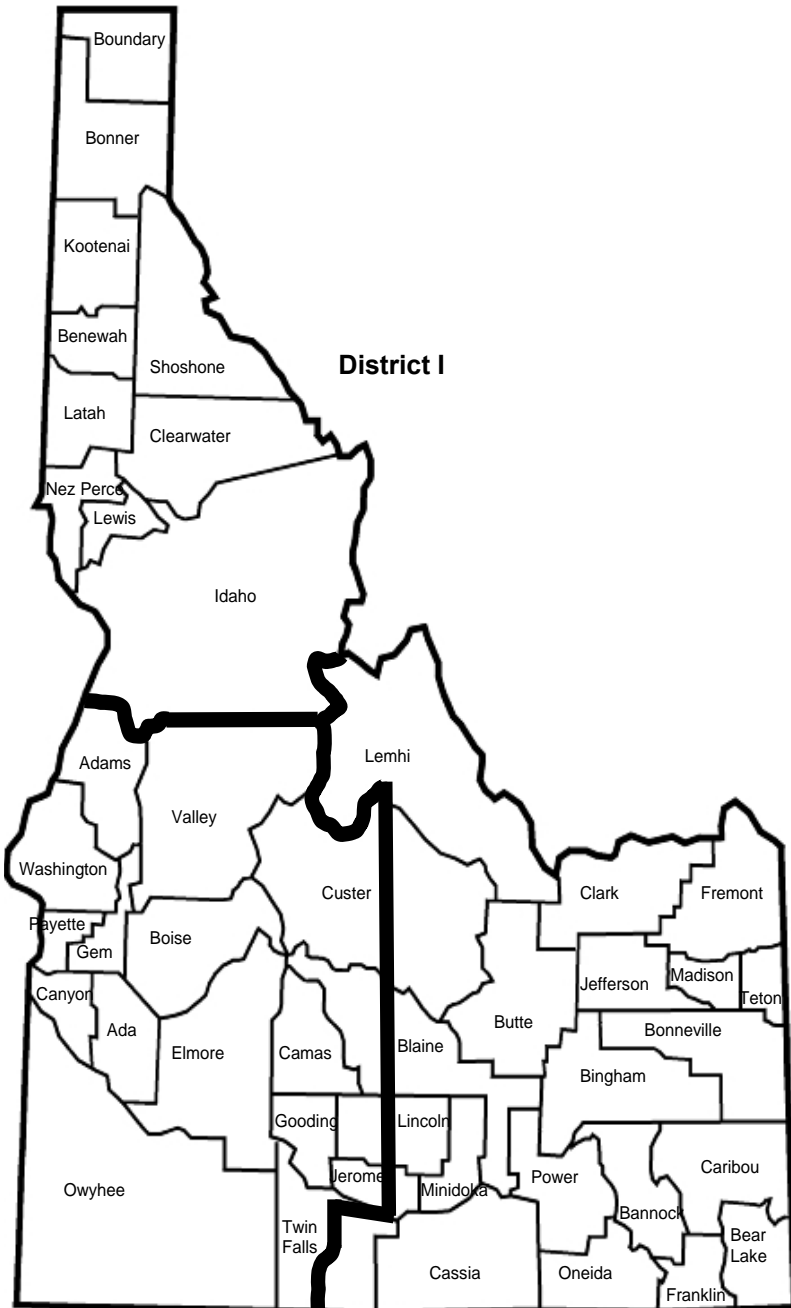
Mark Aamodt
Deputy Fire Marshal
2005 Ironwood Parkway #143
Coeur d'Alene, ID 83814
208-769-1447

District II

Jeff Sands
Chief Deputy Fire Marshal
700 West State Street, 3rd Floor
Boise, ID 83720-0043
208-334-4370

District III

Ivan Hibbert
Deputy Fire Marshal
1820 East 17th Street, Suite 220
Idaho Falls, ID 83404
208-525-7209



Fire Prevention

District I

Don Strong
Deputy Fire Marshal
(home/office)
Moscow, ID 83843
208-882-2368

District II

Knute Sandahl
Chief Deputy Fire Marshal
700 West State Street, 3rd Floor
Boise, ID 83720-0043
208-334-4370

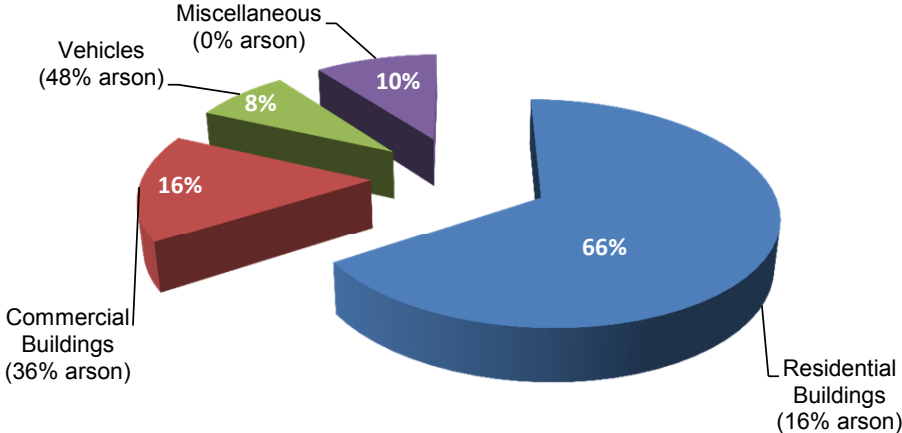
District III

Terry Edwards
Deputy Fire Marshal
1820 East 17th Street, Suite 220
Idaho Falls, ID 83404
208-525-7022

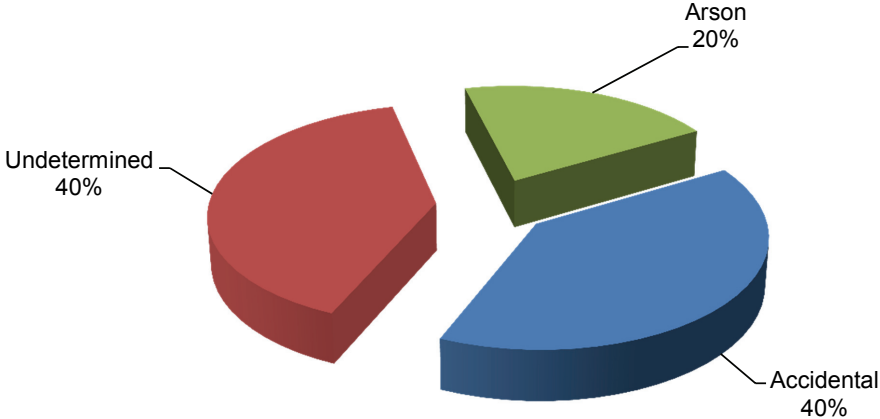
Customer Service

Fires Investigated by Idaho State Fire Marshal Staff

Types of Fires



Determination of Cause



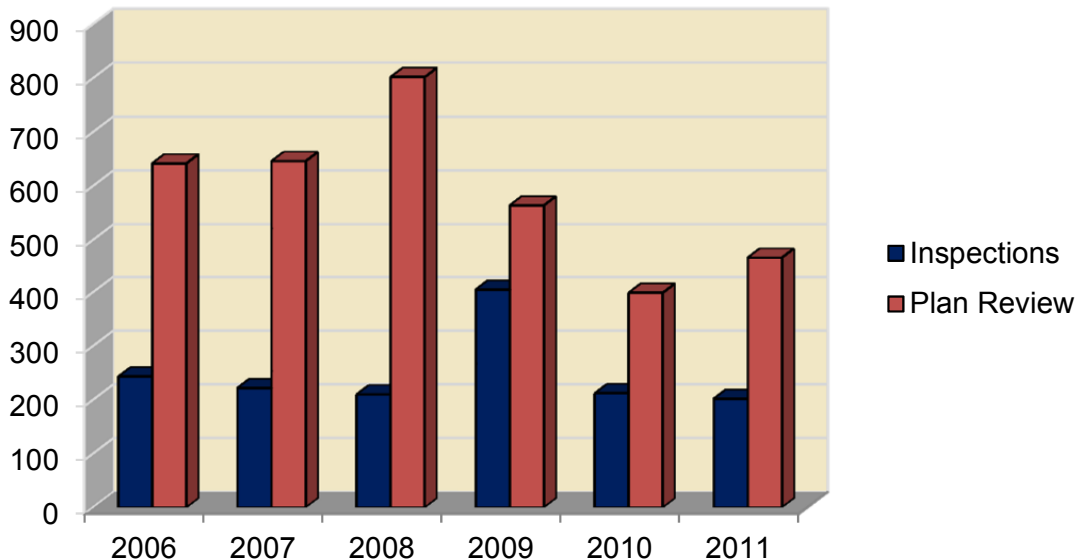
Residential Structure Fire
Owyhee County
Photo provided by Jeff Sands, Chief
Deputy-Investigations

Inspections and Plan Reviews

We experienced a dramatic increase in information requests relating to changes in use for existing buildings. It is apparent that during our ongoing economic downturn, those looking to expand their businesses or begin new business ventures are choosing to utilize and upgrade existing vacant buildings. Local jurisdictions seem to have encouraged this as a way to revitalize their communities. Owners are finding this a cost effective alternative.

Because of this trend, the State Fire Marshal's Office was asked by agencies to review and provide technical data and code research. The number of plan reviews showed a slight increase, with inspections showing no significant change. Calls for assistance continue to be a top priority. Another priority is our training initiative in the application of the fire code mandated by the Idaho Code. A total of nine classes were offered statewide, usually associated with one of the many regional training academies. Local fire code officials are now more confident and comfortable applying the provisions of the fire code.

We continue to capitalize on the use of electronic plan review. In cooperation with the Idaho Division of Building Safety and through our own initiatives, we are capable of providing this service to our customers. Contractors, vendors and other design professionals have been very pleased with the overall process. The days of submitting 75 pounds of paper plans and thousands of specification sheets have become almost a thing of the past. We continue to do our part in protecting our natural resources while providing a very cost effective means of plan review submittal. Our processing time from the time we receive the plans and are able to return them to the submitting agency has improved greatly.



Idaho State Fire Marshal Classes

International Fire Code

This course of instruction is designed to provide exposure to the contents of the International Fire Code and is presented to fire department personnel by request of the jurisdiction. The course is intended to provide continuity and consistency of code application throughout the state. A four-hour certification test is conducted at the end of the course.

Access and Water Supplies Code Requirements and Alternatives

This program pertains to Chapter 5 of the International Fire Code-requirements for access roads and water supplies. The program is designed to provide consistent application and interpretation throughout the state with the intent of the International Fire Code. The alternatives are based on other nationally recognized standards to meet the intent of the International Fire Code. The program is intended for Fire Chiefs, Code Officials, Fire District Commissioners, County Commissioners, land use planners and other interested parties.

Arson Detection for the First Responder

This class provides the first responder with knowledge and awareness of the detection of possible incendiary fires.

Origin and Cause Fire Investigation

This 16-hour program is based on the National Fire Protection Association (NFPA) 921 Guide for Fire and Explosion Investigations and provides the student with basic origin and cause fire investigation knowledge and principles.

Arson Investigation and Evidence Preservation

The objective of this program is to instruct students toward a positive approach to arson investigation and prosecution by using multi-agency investigation for a successful arson case. Law enforcement agencies, the Idaho State Police Forensic Lab and the Idaho Attorney General's Office participate with the Idaho State Fire Marshal's Office in instructing this 24-hour course.

Introduction to National Fire Incident Reporting System (NFIRS)

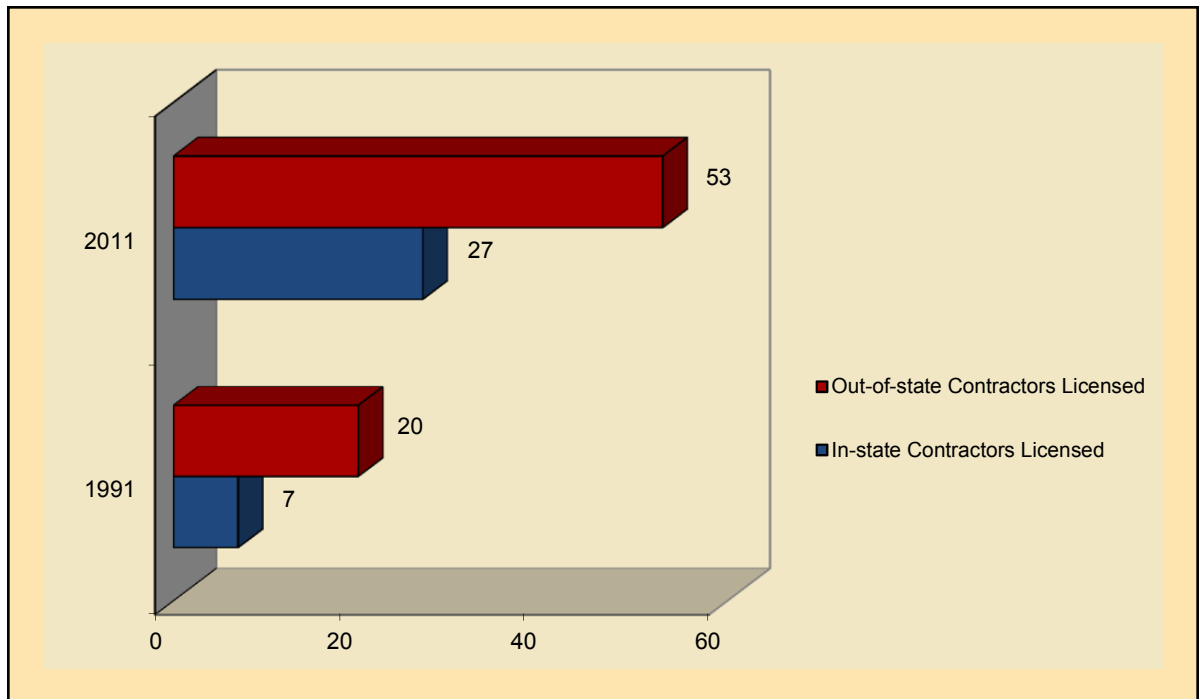
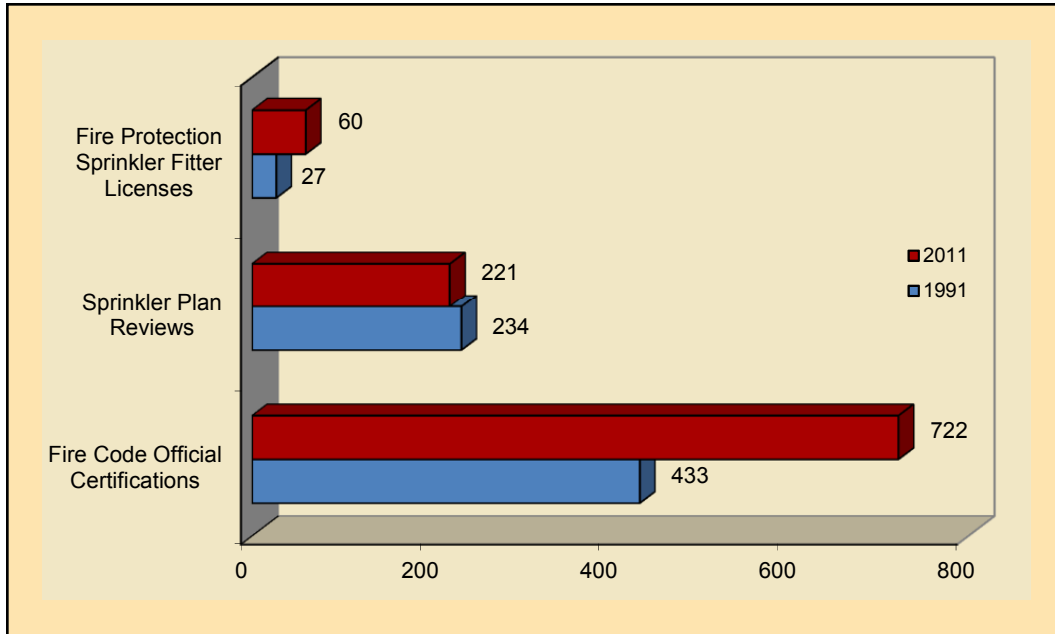
This course is designed to provide an introduction to and experience with the NFIRS 5.0 all-incident reporting system. Students become acquainted with the purposes and benefits of incident reporting at the local, state and national levels and receive a basic introduction to all modules and their uses.





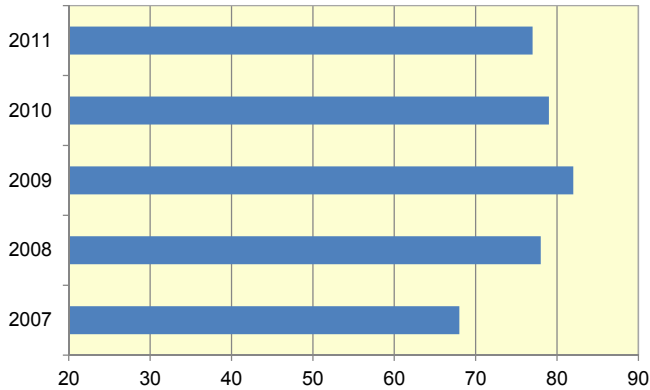
IDAHO STATE FIRE MARSHAL'S OFFICE

Certification and Licensing 1991 and 2011 Comparisons



Certification and Licensing Five-Year Trend

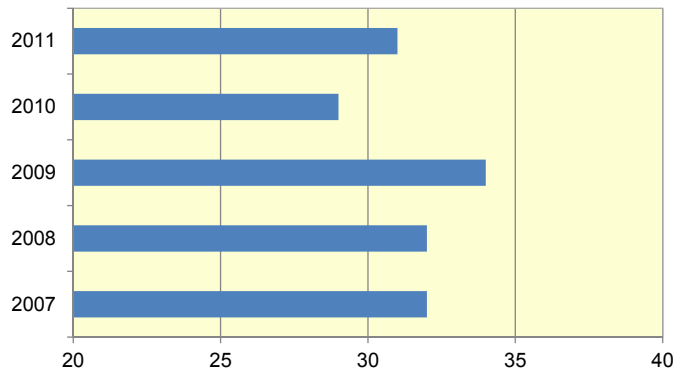
Fire Protection Sprinkler Contractor Licenses



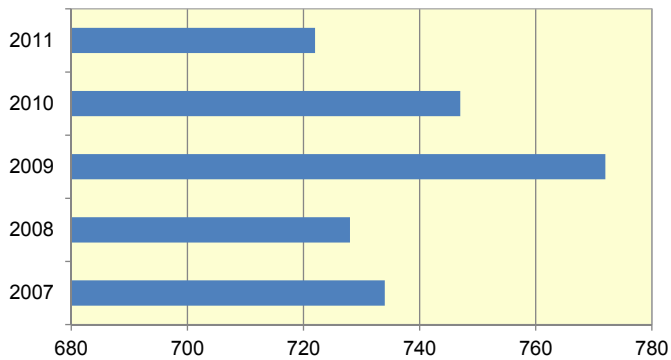
Idaho Code Section 41-254 gives the State Fire Marshal the duty to license and regulate fire sprinkler contractors.

Idaho Code Section 39-2603 requires anyone who imports or sells fireworks at wholesale to be licensed through the State Fire Marshal's office.

Fireworks Wholesale or Import Licenses



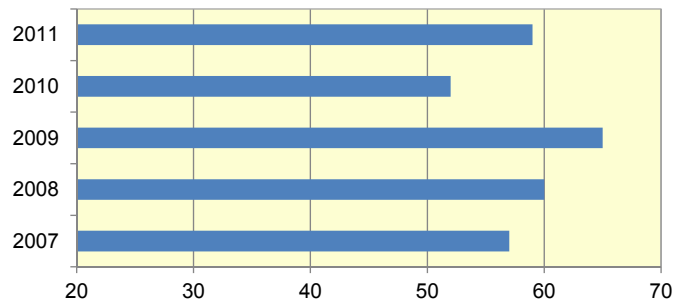
Fire Code Official Certifications



Idaho Code Section 41-255(6) requires all persons acting as assistants to the State Fire Marshal (fire code officials) to be trained.

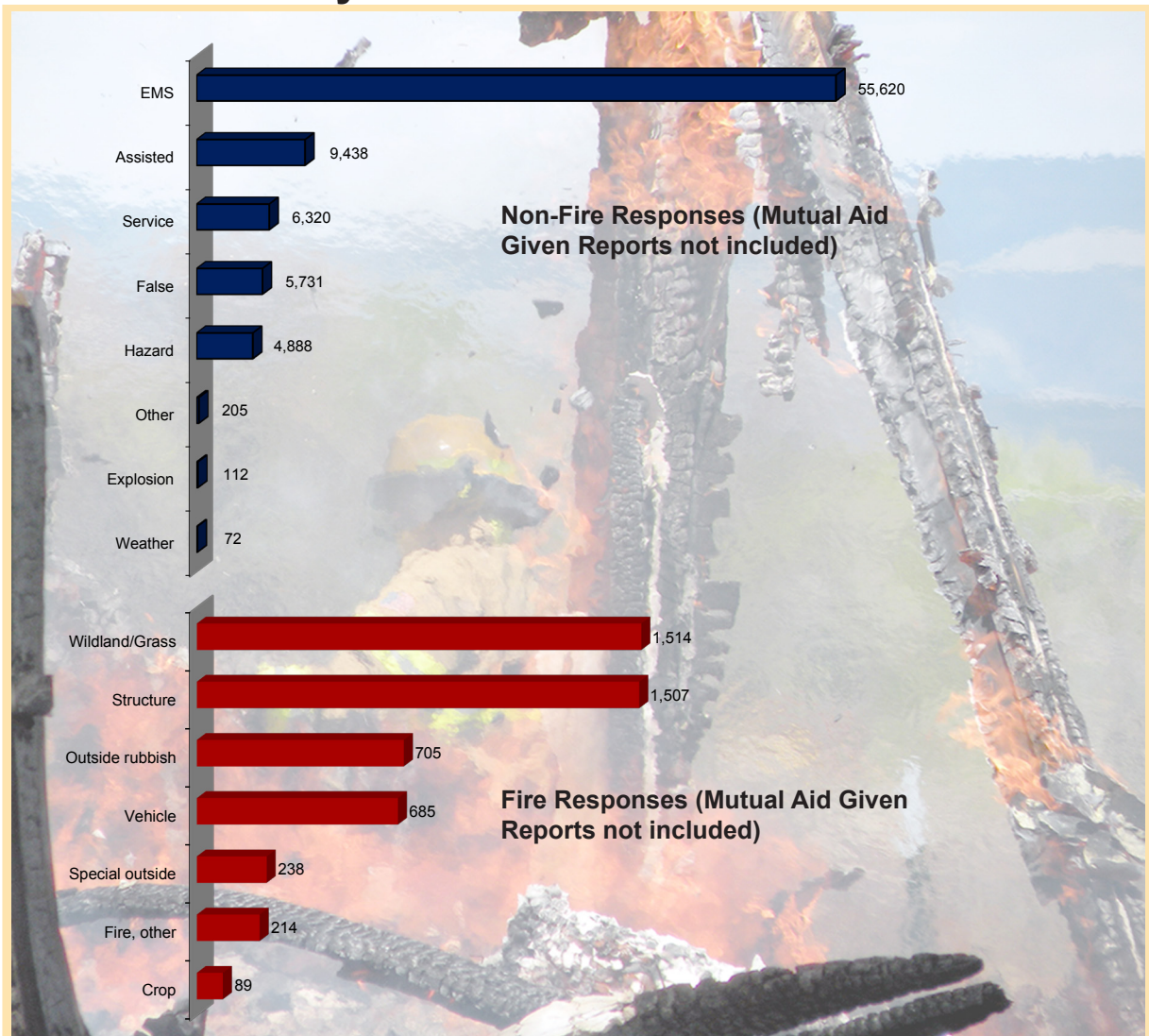
This is a voluntary certification program established at the request of the licensed fire sprinkler contractors.

Fire Protection Sprinkler Fitter Licenses



Summary Statistics

Incident Summary



Live Burn Training - Bannock County
Photo provided by Lava Hot Springs Volunteer Fire Department

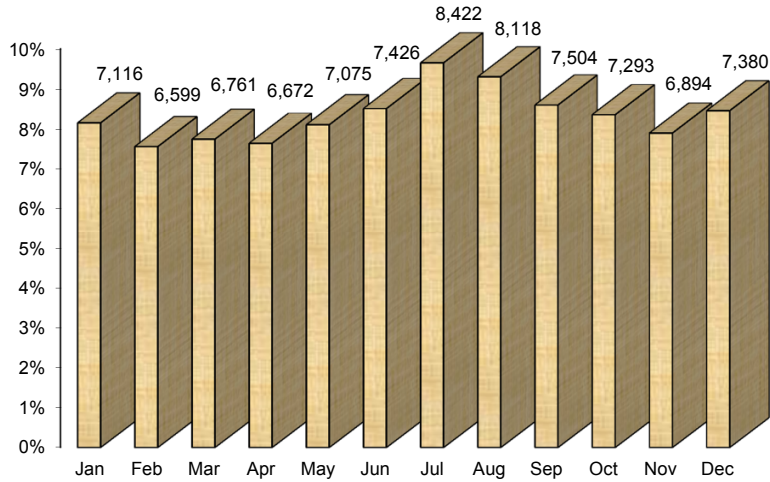
Total Responses by Incident Type (Includes Mutual Aid Given reports)

	Incident Count	% of Total Incidents	Average Response Time (minutes)	Average Personnel per Incident	Average Apparatus per Incident	\$ Loss	Civilian Casualties	Fire Service Casualties
EMS	56,693	62%	8.1	1	1	\$445,500	0	36
Assisted	10,408	11%	7.7	1	1	\$4,315	0	2
Fire	5,929	7%	9.4	1	1	\$36,865,336	82	47
False	5,937	7%	5.9	2	1	\$508,108	0	0
Hazard	4,983	5%	4.7	1	1	\$1,080,170	0	1
Service	6,428	7%	6.5	1	1	\$98,480	0	2
Other	207	0%	4.6	1	0	\$0	0	19
Explosion	118	0%	6.2	3	1	\$18,200	0	0
Weather	80	0%	7.9	2	1	\$94,000	0	0
Total	90,783	100%	7.7	1	1	\$39,114,109	82	107

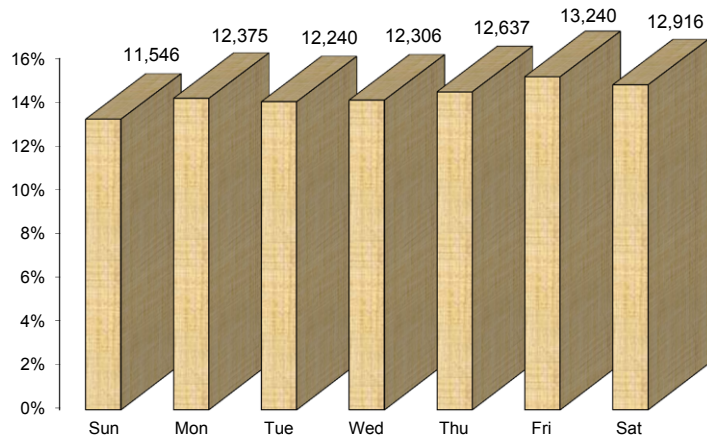


Month, Day and Hour (Includes Mutual Aid Given Reports)

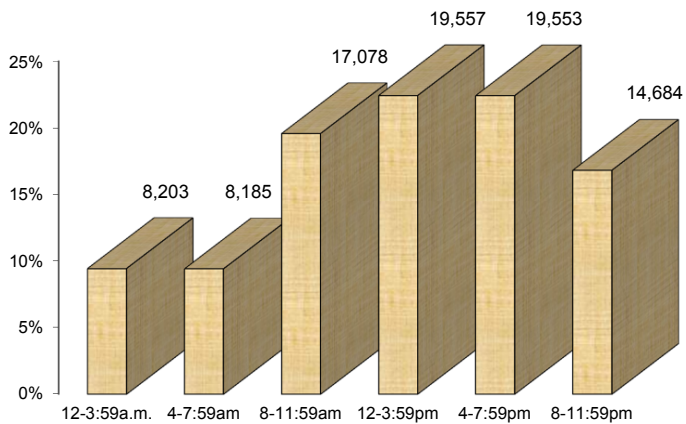
Incidents by Month



Incidents by Day

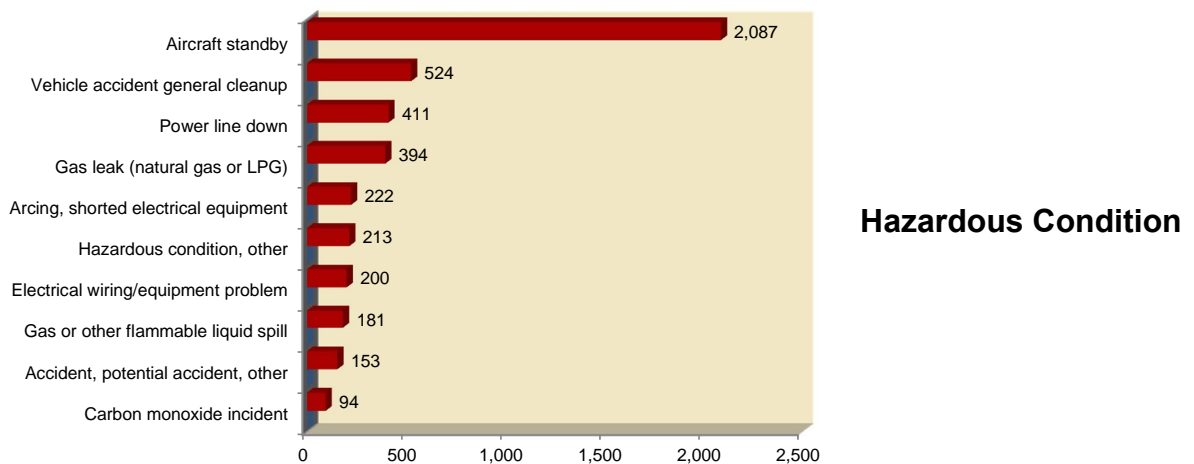
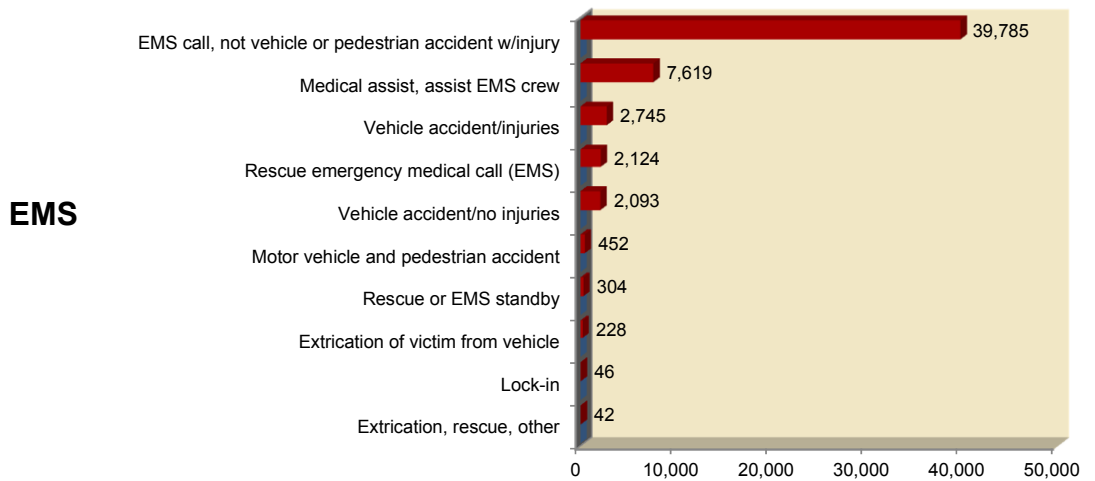
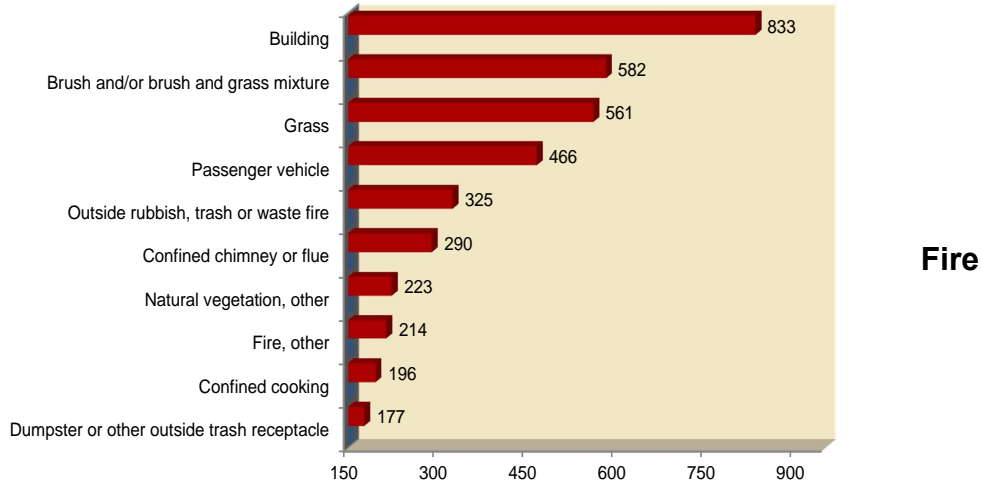


Incidents by Hour

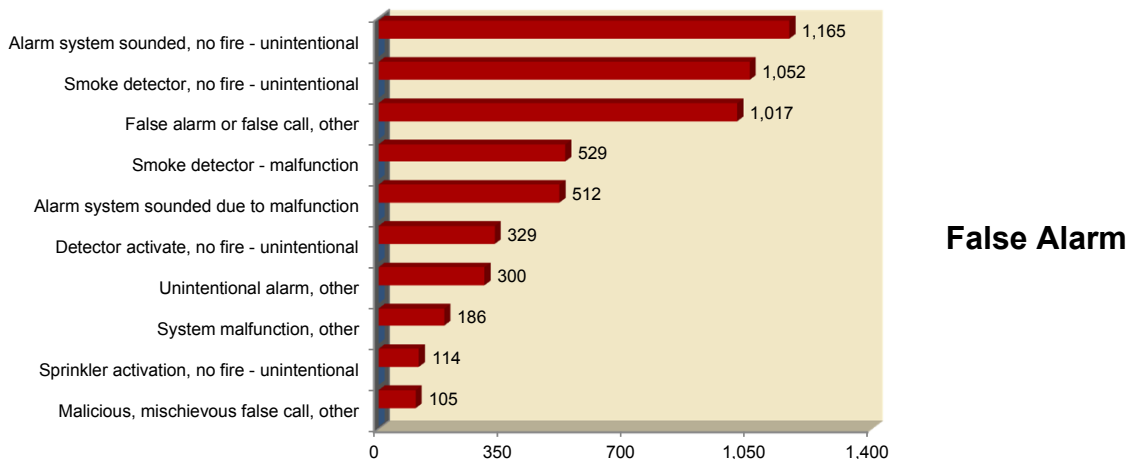
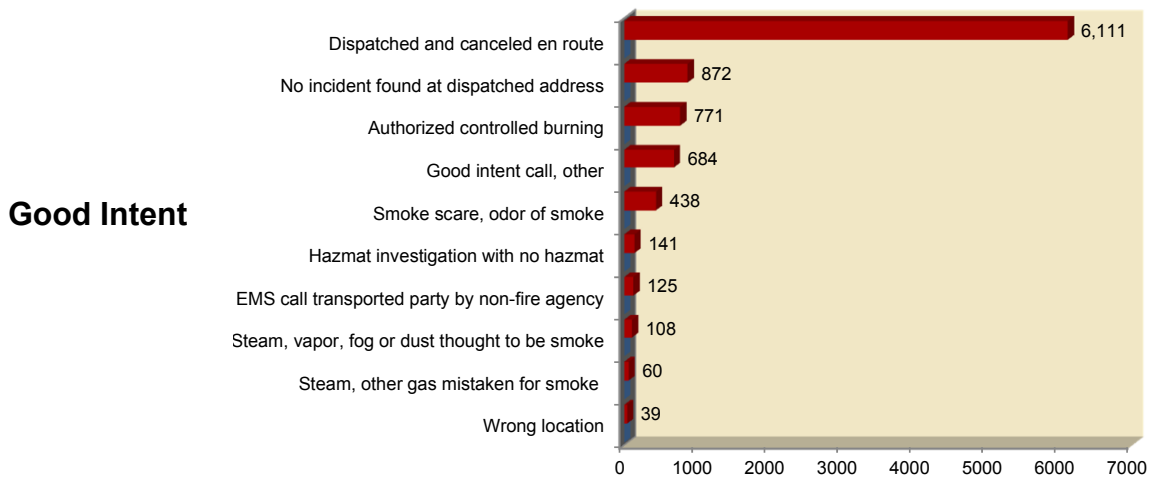
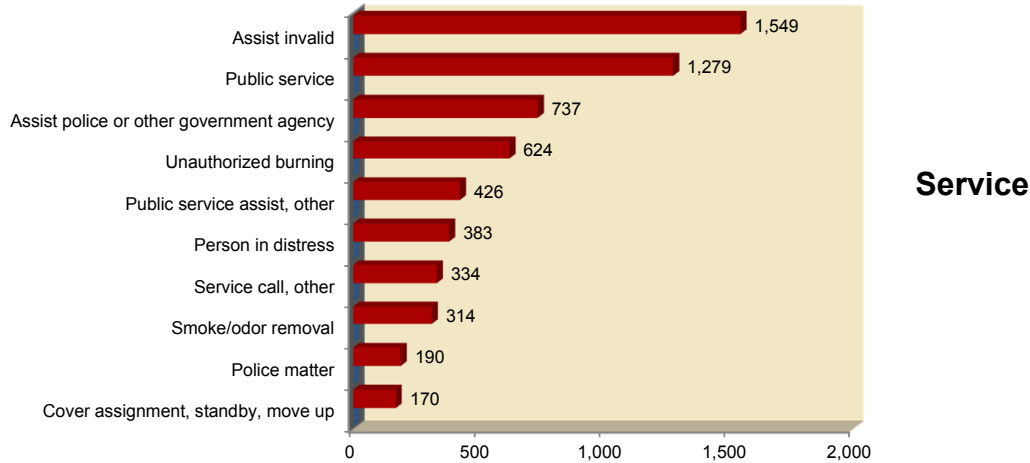


Summary Statistics

Top 10 Incident Types by Incident Categories (Mutual Aid Given Reports not included)

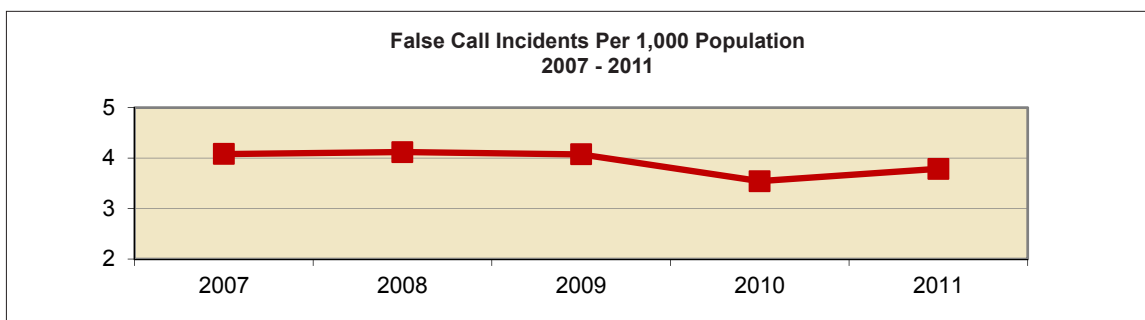
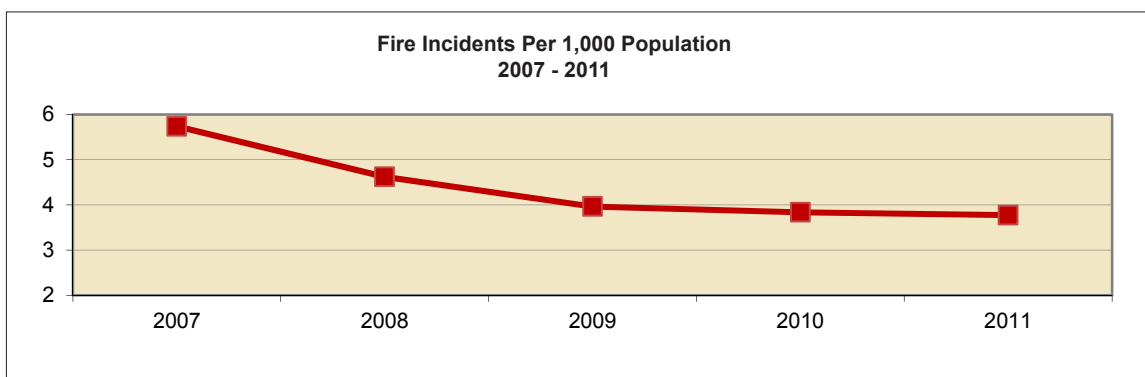
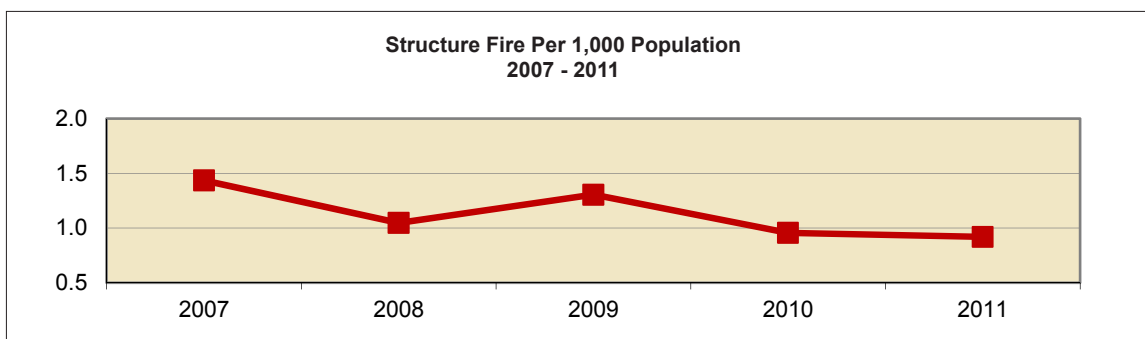
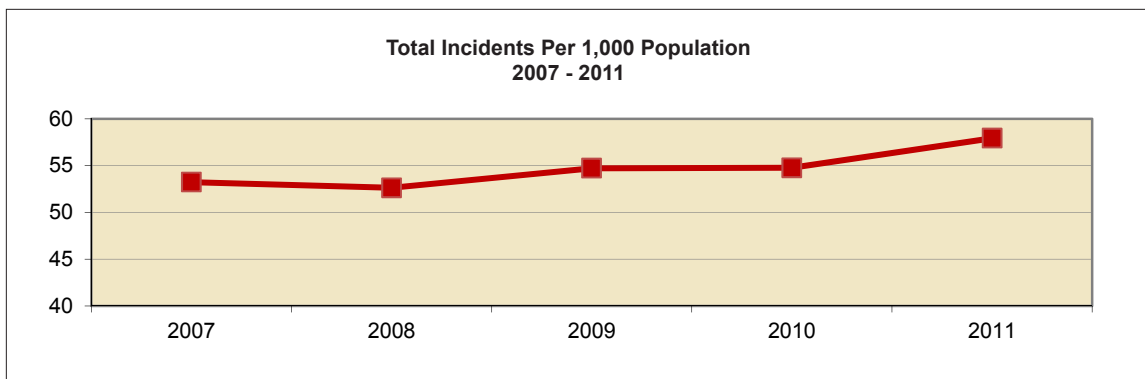


Top 10 Incident Types by Incident Categories (cont.) (Mutual Aid Given Reports not included)

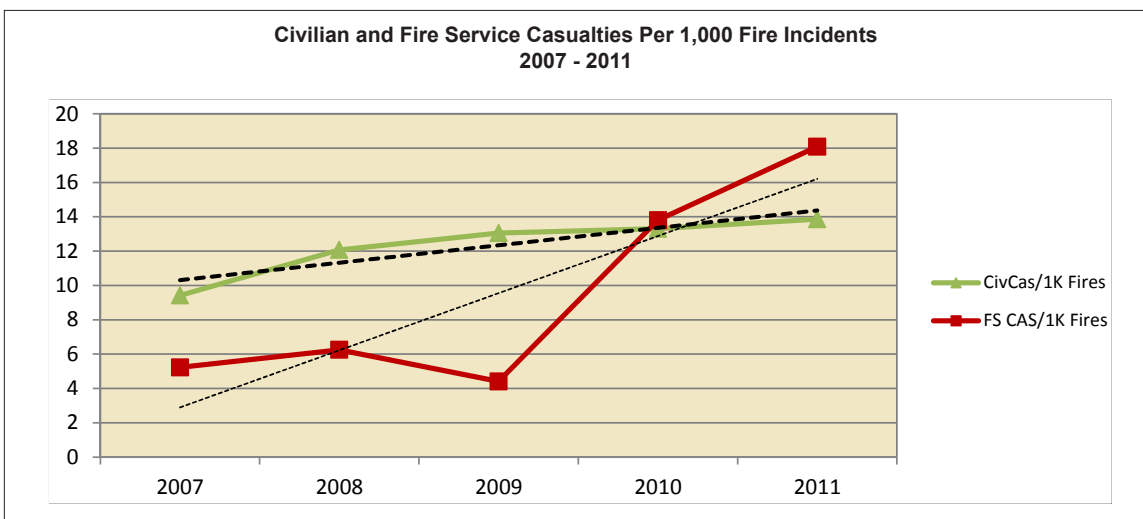
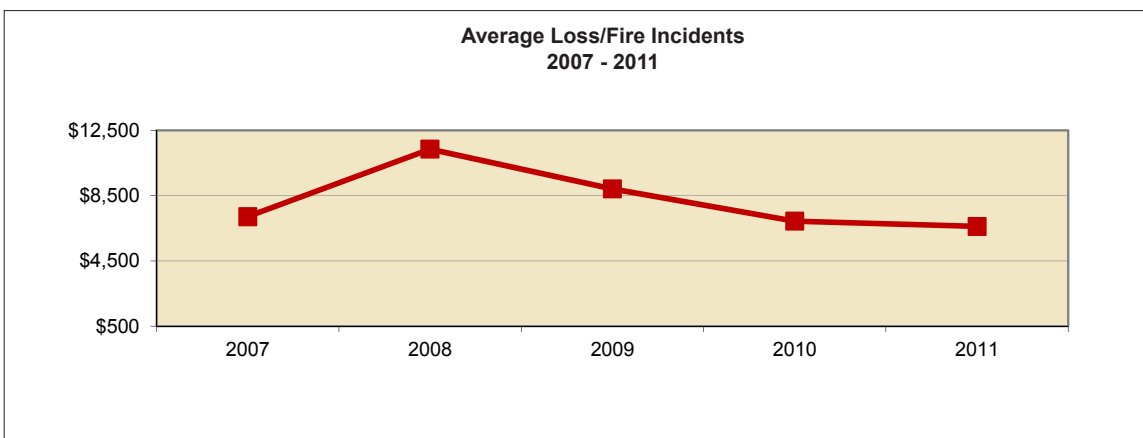
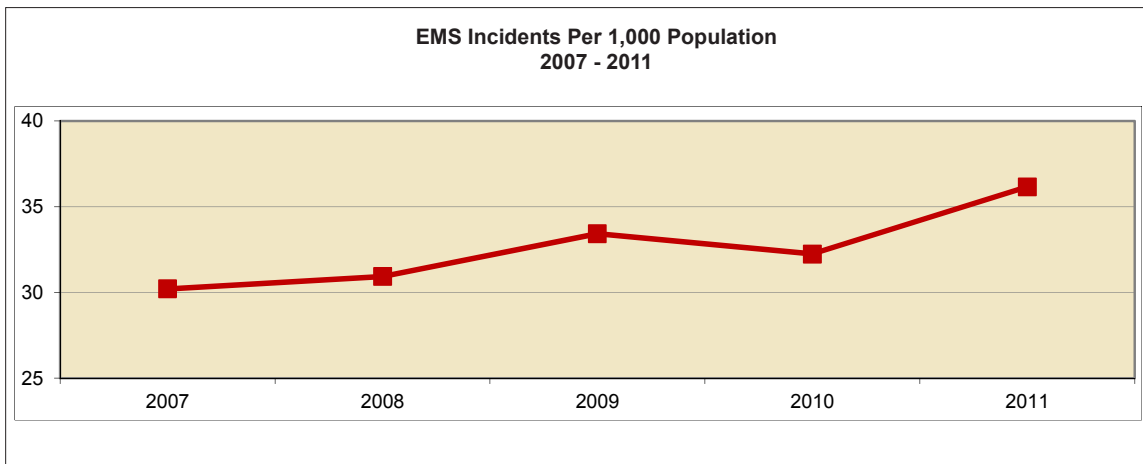


Summary Statistics

Five-Year Trends



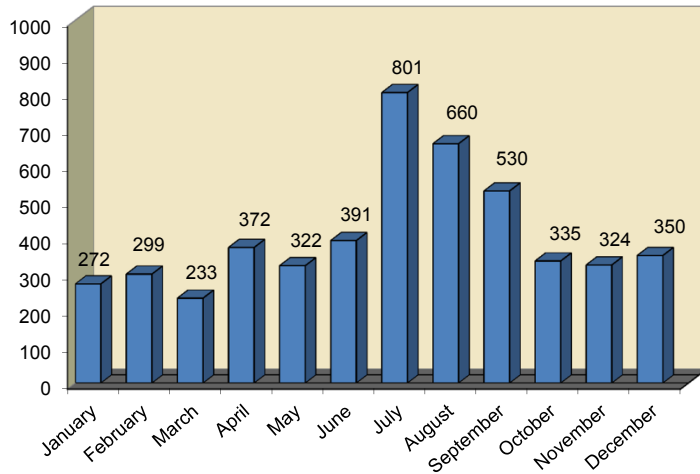
Five-Year Trends (cont.)



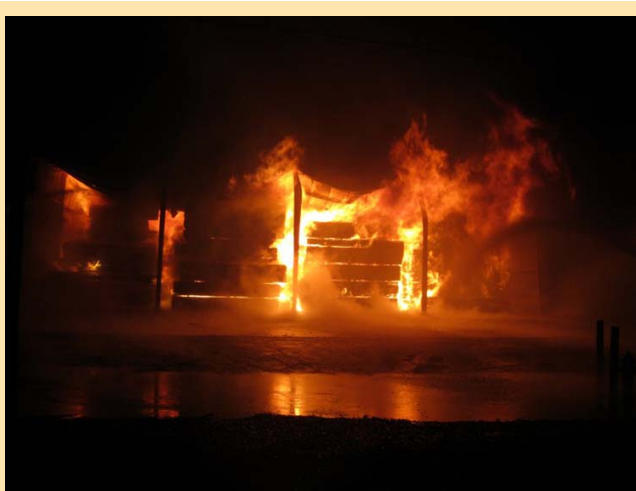
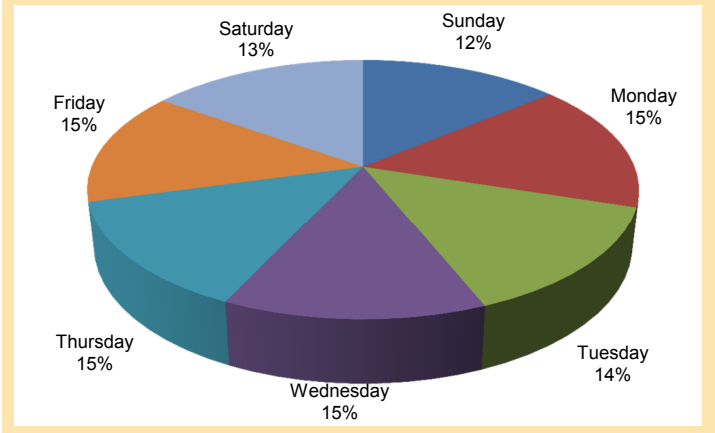
Summary Statistics

Fire Calls by Month and Day of Week

Reported by Month



Reported by Day of Week



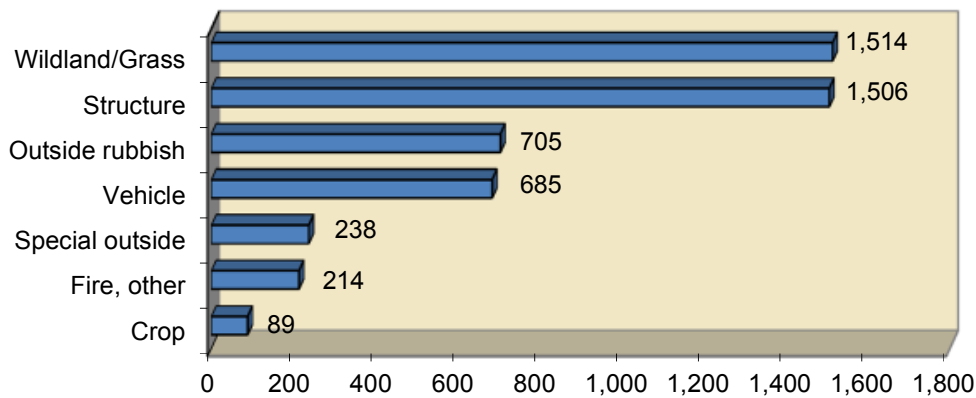
Western Core Door Fire - Payette County, Idaho
Photo provided by Payette City Fire Department and Payette Rural Fire Department

Summary Statistics

Fires in Idaho

(Mutual Aid Given Reports not included)

Fire Groups	Incident Count	% of Total Fire Incidents	\$ Loss	Civilian Casualties	Fire Svc Casualties
Wildland/Grass	1,514	31%	220,375	1	6
Structure	1,506	30%	30,649,726	65	38
Outside rubbish	705	14%	17,495	1	1
Vehicle	685	14%	3,622,080	14	0
Special outside	238	5%	1,572,625	0	2
Fire, other	214	4%	308,710	1	0
Crop	89	2%	474,325	0	0
Totals	4,951	100%	36,865,336	82	47



Grass Fire - Valley County
Photo provided by Cascade Rural Fire Department

Summary Statistics

Comparisons of 2010 and 2011 County Populations and Reported Incidents

County	2011 Population	2010 Population	Difference	Total 2011 Incidents Reported	Total 2010 Incidents Reported	Difference	Total 2011 Fire Incidents Reported	Total 2010 Fire Incidents Reported	Difference
Ada	400,842	392,365	8,477	26,214	25,761	453	1,029	1,046	-17
Adams	3,977	3,976	1	35	59	-24	14	26	-12
Bannock	83,691	82,839	852	7,560	7,229	331	245	261	-16
Bear Lake	6,001	5,986	15	61	58	3	40	37	3
Benewah	9,209	9,285	-76	280	228	52	90	61	29
Bingham	45,952	45,607	345	765	2,803	-2,038	256	310	-54
Blaine	21,199	21,376	-177	1,839	2,170	-331	82	117	-35
Boise	7,025	7,028	-3	303	315	-12	105	58	47
Bonner	40,808	40,877	-69	2,773	2,721	52	223	237	-14
Bonneville	105,772	104,234	1,538	3,359	3,341	18	242	281	-39
Boundary	10,804	10,972	-168	341	350	-9	46	90	-44
Butte	2,822	2,891	-69	40	29	11	17	15	2
Camas	1,124	1,117	7	18	12	6	8	4	4
Canyon	191,694	188,923	2,771	12,957	12,210	747	639	599	40
Caribou	6,850	6,963	-113	21	22	-1	13	12	1
Cassia	23,186	22,952	234	852	670	182	107	105	2
Clark	949	982	-33	0	0	0	0	0	0
Clearwater	8,702	8,761	-59	112	51	61	68	44	24
Custer	4,333	4,368	-35	59	90	-31	11	31	-20
Elmore	26,346	27,038	-692	218	233	-15	104	110	-6
Franklin	12,850	12,786	64	102	122	-20	29	36	-7
Fremont	13,128	13,242	-114	57	84	-27	26	50	-24
Gem	16,665	16,719	-54	292	236	56	133	102	31
Gooding	15,475	15,464	11	545	674	-129	151	198	-47
Idaho	16,446	16,267	179	117	141	-24	76	93	-17
Jefferson	26,301	26,140	161	150	226	-76	65	123	-58
Jerome	22,682	22,374	308	1,465	1,118	347	191	154	37
Kootenai	141,132	138,494	2,638	16,779	15,240	1,539	589	452	137
Latah	37,704	37,244	460	1,014	904	110	102	85	17
Lemhi	7,967	7,936	31	4	58	-54	3	46	-43
Lewis	3,822	3,821	1	71	32	39	30	21	9
Lincoln	5,186	5,208	-22	14	124	-110	8	24	-16
Madison	37,864	37,536	328	415	483	-68	70	99	-29
Minidoka	20,155	20,069	86	828	806	22	177	208	-31
Nez Perce	39,543	39,265	278	2,488	953	1,535	171	152	19
Oneida	4,215	4,286	-71	0	0	0	0	0	0
Owyhee	11,438	11,526	-88	159	170	-11	100	104	-4
Payette	22,624	22,623	1	574	344	230	129	112	17
Power	7,766	7,817	-51	8	15	-7	2	8	-6
Shoshone	12,672	12,765	-93	1,308	1,163	145	76	54	22
Teton	10,166	10,170	-4	425	378	47	31	40	-9
Twin Falls	78,005	77,230	775	4,428	4,759	-331	263	308	-45
Valley	9,638	9,862	-224	1,518	1,661	-143	69	103	-34
Washington	10,255	10,198	57	214	175	39	84	57	27
TOTALS	1,584,985	1,567,582	17,403	90,782	88,218	2,564	5,914	6,073	-159



Fire Stations Across Idaho



Challis Fire Station



Grangeville City-Rural Fire Department



Minidoka County FPD - Heyburn Station



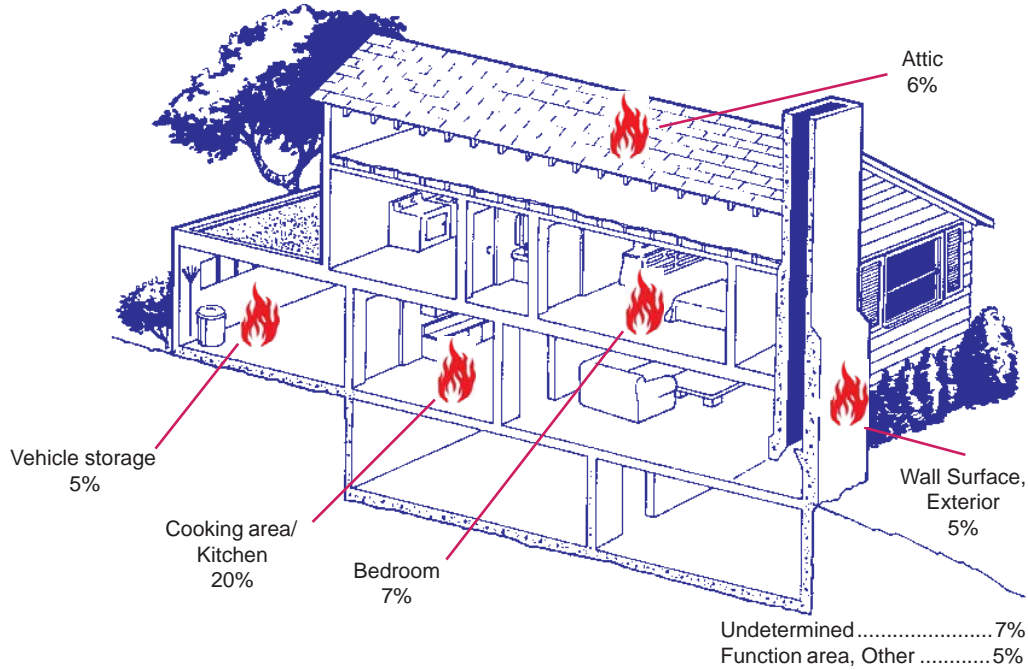
Star Joint Fire Protection District - Station #2



Lewiston Fire Department - Station #1

Structure Fires

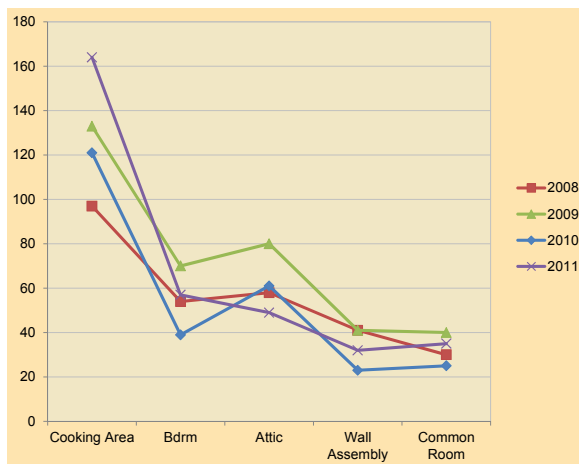
Top 7 Identified Areas of Origin for Residential Structures in 2011



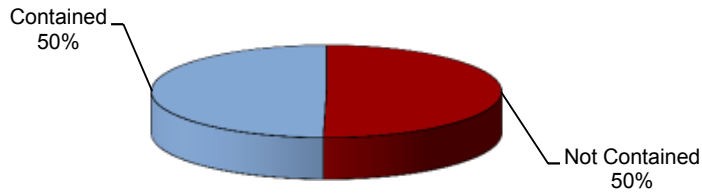
Most Frequent Residential Structure Fire Areas of Origin (Mutual Aid Given Reports not included)

	Incident Count	% of Total Res Struct Fire Incidents	Response Time (minutes)	\$ Loss	% of Total \$ Loss	Civilian Cas	% of Total Civ Cas	Fire Svc Cas	% of Total FS Cas
Cooking area, kitchen	164	20%	6.0	\$1,346,185	7%	9	16%	1	5%
Bedrm-less than 5 persons; jail/prison included	57	7%	5.5	\$1,638,696	9%	6	11%	0	0%
Undetermined	55	7%	11.4	\$2,929,000	16%	5	2%	0	0%
Attic:vacant, crawl space above top story, cupola	49	6%	8.8	\$828,860	5%	2	4%	0	0%
Function area, other	41	5%	7.5	\$1,162,323	6%	3		2	10%
Vehicle storage area; garage, carport	41	5%	6.5	\$1,756,652	10%	5	9%	0	0%
Wall surface: exterior	41	5%	6.7	\$647,890	4%	4	7%	1	5%
Common rm, den, family rm, living rm, lounge	35	4%	9.0	\$703,365	4%	8	14%	3	14%
Wall assembly	32	4%	7.2	\$774,500	4%	2	4%	0	0%
Exterior balcony, unenclosed porch	26	3%	6.9	\$1,266,130	7%	0	1%	1	5%
Totals	541	65%		\$13,053,601	72%	44	67%	8	38%
Total Residential Structure Fire Incidents	836		7.3	\$18,054,891	59%	56	88%	21	55%
Total Structure Fire Incidents	1,440		7.4	\$30,649,726		64		38	

Top 5 Identified Areas of Origin for Residential Structure Fires (2008-2011)



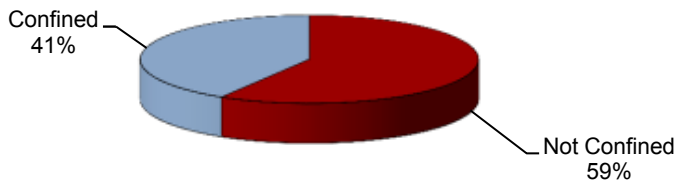
Residential Structure Fire Spread - Contained in Room of Origin (Mutual Aid Given Reports not included)



"Contained fire" is defined as fire spread that is reasonably expected to remain in check under prevailing conditions.

	Incident Count	% of Total Incidents	\$ Loss	% of Total Loss	Civilian Cas	% of Total Civ Cas	Fire Svc Cas	% of Total FS Cas
Not Contained	347	50%	15,031,928	85%	36	67%	21	95%
Contained	343	50%	\$2,747,331	15%	18	33%	1	5%
Total	690		\$17,779,259		54		22	

Residential Structure Fires - Confined/ Not Confined Fires Building/Fixed Mobile Property Incidents (Mutual Aid Given Reports not included)



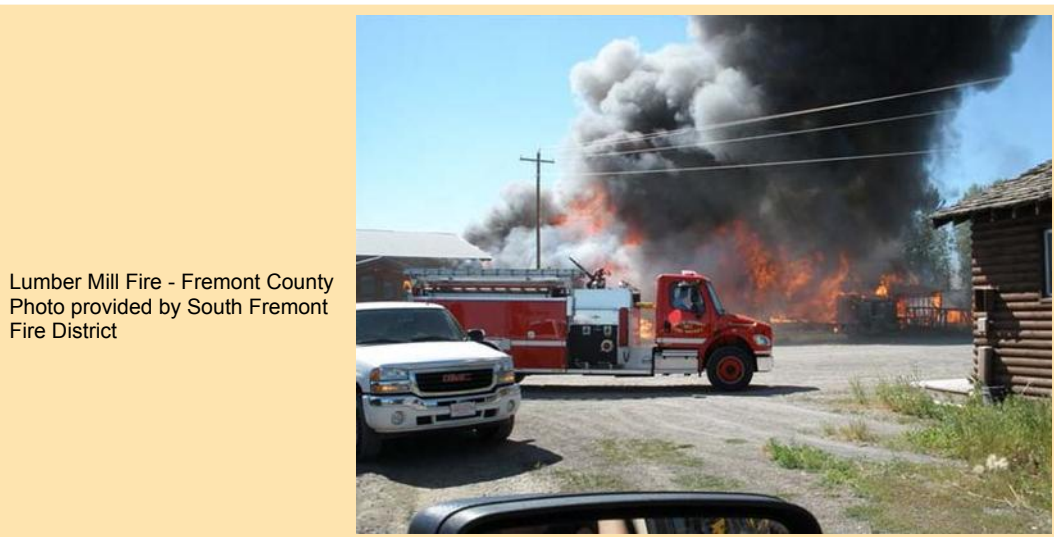
"Confined fires" are defined as fires where the flame does not extend beyond a non-combustible container. Stovetop, trash can or chimney fires are examples of confined fires.

	Incident Count	% of Incident Count	\$Loss	Civilian Casualties	Fire Svc Casualties
Not Confined	698	59%	\$28,390,007	53	22
Confined	492	41%	56,172	5	1
Total	1,190		\$28,446,179	58	23

Structure Fires

Reported Dollar Large Loss Structure Fire Events (\$500,000 or more)

Estimated Property/Contents Dollar Losses	Date	Location	Responding Fire Department	Incident Type/Property Use	Heat Source/Cause of Fire
\$2,050,000	February 2011	DeSmet	Tensed Fire District	Building fire/School, non-adult	Undetermined/Cause undetermined after investigation
\$1,650,000	September 2011	Shelley	Shelley Rural Fire District	Building fire/Motor vehicle or boat sales, services, repair	Spark, ember or flame from operating equipment/Unintentional
\$1,100,000	June 2011	Moscow	Moscow City Fire Department	Building fire/Adult education center, college classroom	Hot or smoldering object, other/Unintentional
\$1,000,000	July 2011	St. Anthony	South Fremont Fire District	Building fire/Sawmill	Undetermined/Cause under investigation
\$850,000	June 2011	Idaho Falls	Idaho Falls Fire Department	Building fire/Manufacturing, processing	Undetermined/Cause under investigation
\$736,000	July 2011	Lewiston	Lewiston Fire Department	Building fire/Church	Fireworks/Unintentional
\$600,000	September 2011	Nampa	Caldwell City Fire and Rescue	Building fire/Specialty shop	Heat from operating equipment/Unintentional
\$575,000	March 2011	McCall	McCall Fire Protection District	Building fire/1-or 2-family dwelling	Undetermined/Cause under investigation



Lumber Mill Fire - Fremont County
Photo provided by South Fremont Fire District

Structure Fires by Property Use

	Incident Count	% of Total Incidents	Response Time (minutes)	\$ Loss	% of Total \$ Loss	Civilian Casualties	% of Total Civ Cas	Fire Svc Casualties	% of Total FS Cas
Residential	1,191	79%	7.3	\$18,080,831	59%	58	89%	23	82%
Storage	104	7%	8.6	\$1,827,390	6%	1	2%	4	14%
Outside/Special Prop	68	5%	7.9	\$619,500	2%	0	0%	0	0%
Business	39	3%	6.1	\$3,574,800	12%	5	8%	1	4%
Manufacturing	15	1%	7.3	\$1,083,500	4%	0	0%	0	0%
Assembly	23	2%	7.4	\$856,350	3%	0	0%	0	0%
Health Care/Jail	16	1%	4.8	\$505	0%	0	0%	0	0%
Other	2	0%	3.0	\$15,000	0%	0	0%	0	0%
Industry/Utility/Defense	21	1%	8.1	\$137,100	0%	0	0%	0	0%
Educational	16	1%	5.6	\$3,279,750	11%	1	2%	0	0%
None	3	0%	9.0	\$0	0%	0	0%	0	0%
Undetermined	4	0%	8.5	\$1,175,000	4%	0	0%	0	0%
Total/Average	1,502			\$30,649,726		65		28	

Residential fires accounted for 79% of all structure fire incidents reported in 2011; a 5% increase from the 2010 figures. The estimated dollar loss for residential fires was 59% of the total losses reported for all structure fires.

The number of structure fires increased .9% over 2010. The total estimated dollar loss for structure fires was almost \$31,000,000 in 2011. The reported dollar loss for 2010 was lower at just over \$27,000,000.

In 2011, the average response time for a residential fire was 7.3 minutes. The average response time for all structure fires was 7.4 minutes.

In the National Fire Incident Reporting System, “residential” describes a building or a structure providing living or sleeping accommodations. “Structure” is defined as an assembly of materials forming a construction for occupancy or use to serve a specific purpose. This includes, but is not limited to, buildings, open platforms, bridges, roof assemblies, tents, air-supported structures or grandstands.



House Fire - Kootenai County
Photo provided by Coeur d'Alene Fire Department

Structure Fires by Property Use

NFIRS Code	Property Use	# of Structure Fires
<u>Residential Property Uses</u>		
400	Residential, other	35
419	1- or 2- family dwelling, detached, manufactured home, mobile home not in transit, duplex	1,006
429	Multi-family dwelling - includes apartments, condos, town houses, row houses, tenements	127
439	Boarding/rooming house - includes residential hotels and shelter	5
449	Hotels/motels, commercial	5
459	Resident board and care	1
460	Dormitory type residence, other	4
462	Sorority house, fraternity house	2
464	Barracks, dormitory	6
<u>Public Property Uses</u>		
	Assembly	23
	Educational	16
	Health care, detention and correction	16
	Mercantile, business	39
	Property use, other	2
<u>Other Property Uses</u>		
600	Utility, defense, agriculture, mining, other	6
629	Laboratory or science laboratory - Includes chemical, medical, biological, physical materials testing, psychological, electronics and general research laboratories. Also includes classrooms and offices incidental to laboratory facilities. Minor laboratory areas incidental to operations in another property should be considered part of the predominating property.	1
642	Electrical distribution	5
647	Water utility - Includes collection, treatment, storage and distribution of water.	1
655	Crops or orchard - includes plant nurseries and greenhouses as well as the processing or packaging of agricultural crops or fruit that occurs on the property	1
659	Livestock production	5
669	Forest, timberland, woodland	2
700	Manufacturing, processing - includes properties where there is mechanical or chemical transformation of inorganic or organic substance into new products; factories making products of all kinds and properties devoted to operations such as processing, assembling, mixing, packing, finishing or decorating and repairing	15
800	Storage, other	6
807	Outside material storage area	3
808	Outbuilding or shed - includes tools and contractor sheds; excludes contractor field offices	56
819	Livestock, poultry storage - includes barns, stockyards and animal pens	9
880	Vehicle storage, other - includes airplane and boat hangers; excludes parking garages	2
881	Parking garage, detached residential garage - includes detached parking structures associated with multifamily housing	19
882	Parking garage, general vehicle - includes bus, truck, fleet or commercial parking structures	3
888	Fire station	1
899	Residential or self-storage units - includes mini-storage units	4
900	Outside or special property, other	6
919	Dump, sanitary landfill	1
926	Outbuilding, protection shelter - includes toll booths, weather shelters, mailboxes, telephone booths, privies, charitable collection boxes and aerial tramways; excludes parking garages	22
931	Open land or field - includes grasslands and brushlands; excludes crops or areas under cultivation	11
935	Campsite with utilities	2
936	Vacant lot; undeveloped land, not paved - may include incidental or untended plant growth or building material or debris	3



Structure Fires by Property Use (cont.)

938	Graded and cared-for plots of land - includes parks, cemeteries, golf courses and residential	1
952	Railroad yard	1
960	Street, other	4
961	Highway or divided highway - includes limited-access highways with few intersections or at grade crossings	2
962	Residential street, road or residential driveway	6
963	Street or road in commercial area	2
965	Vehicle parking area - includes paved non-residential driveways; excludes parking garages	7
973	Aircraft taxiway - Includes all aircraft operation areas other than runways and aircraft loading areas (974).	1
983	Pipeline, power line or other utility right of way	1
984	Industrial plant yard area	1
NNN	None	3
UUU	Undetermined	4



Building Fire, Jefferson County
Photo provided by Central Fire Protection District

Fire Stations Across Idaho



Bovill Volunteer Fire Department



Gem County Fire Protection District - Station #3
Squaw Butte



Blackfoot Fire Department - Snake River District



Wilder Rural Fire Protection District

Fire Stations Across Idaho



Payette City-Rural Fire Station



Big Canyon Fire District



Ammon Fire Department



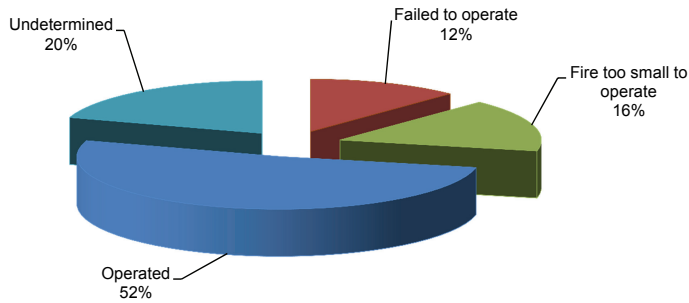
Gem County Fire Protection District #2
Sweet-Montour Station



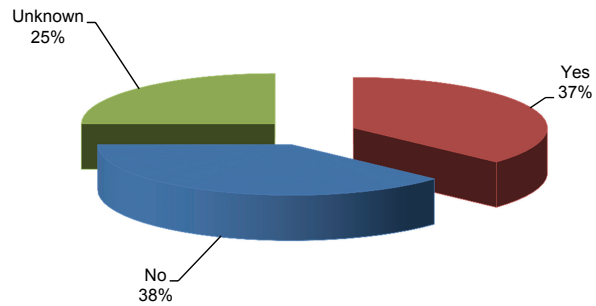
Eagle Fire Protection District - Station #3

Smoke Detector Performance (Mutual Aid Given Reports not included)

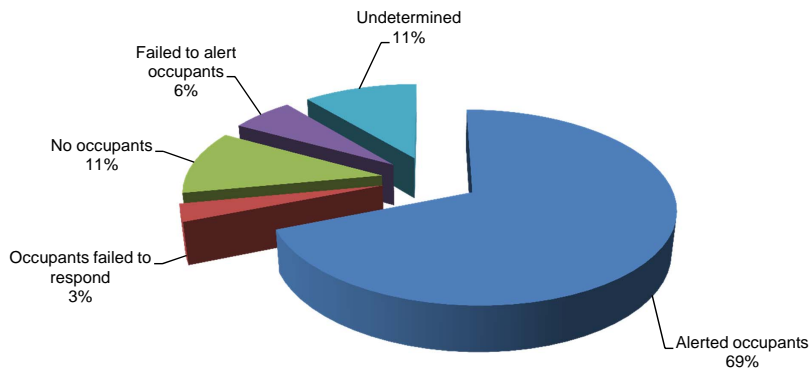
Detector Operation When Present



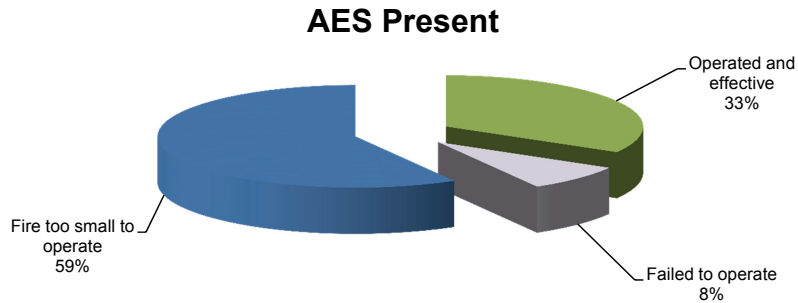
Detector Present



Detector Effectiveness When Present

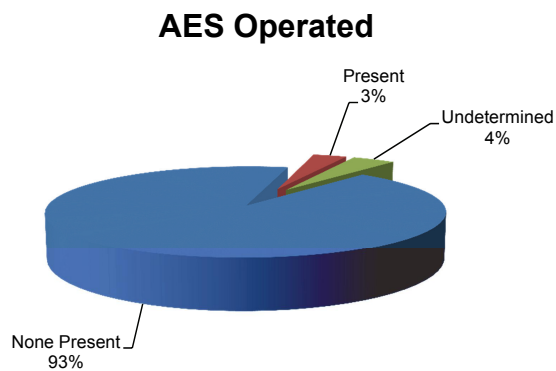


Automatic Extinguishing Systems (AES) (Mutual Aid Given Reports not included)



In 2011 no civilian or firefighter casualties were reported in structure fire incidents where automatic extinguishing systems were present.

The only reported system failures of automatic extinguishing systems occurred when the fires were not in the area protected by the system.

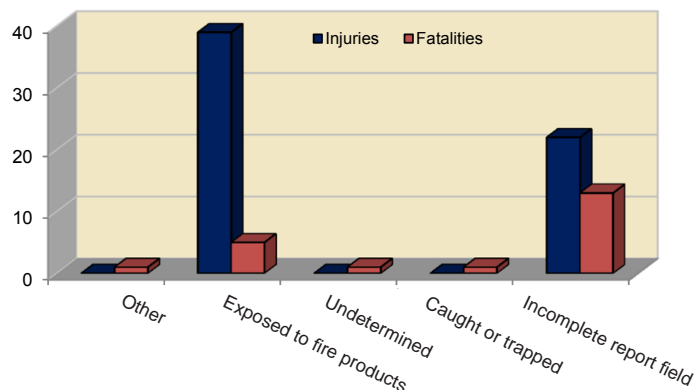


Civilian Fire Casualties

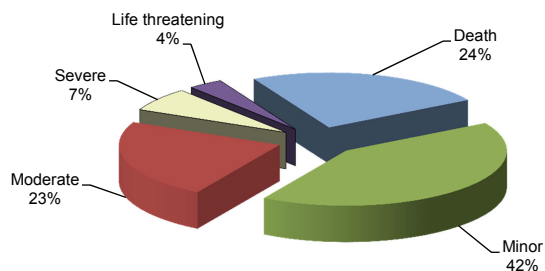
Injuries and Fatalities

"Civilian Fire Casualty" means a person who is injured or dies as the direct result of a fire-related incident. In this circumstance, the term civilian includes, but is not limited to, private citizens, emergency medical service responders (not fire department personnel) and police.

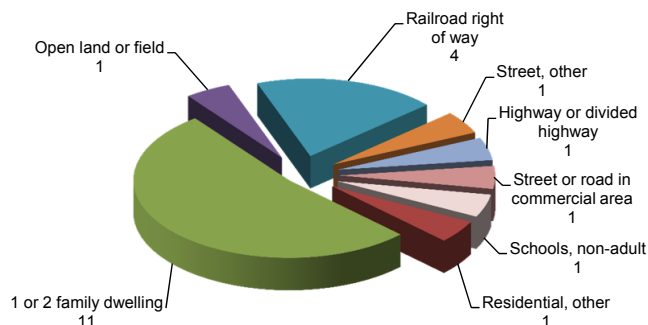
Civilian Fire Casualties by Cause of Injury



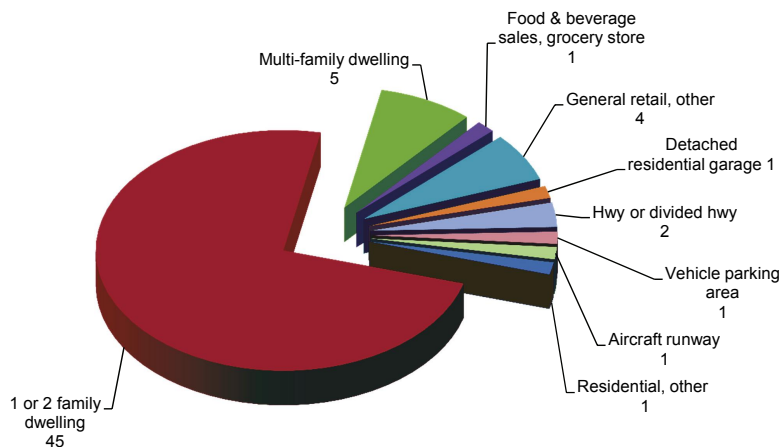
Civilian Fire Casualties by Severity



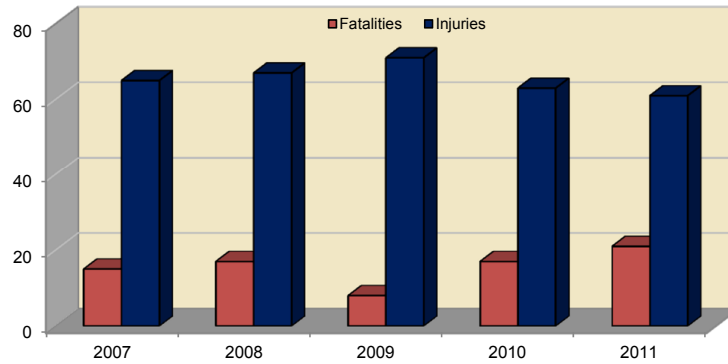
Civilian Fire Fatalities by Property Use



Civilian Fire Injuries by Property Use



Civilian Fire Casualties for Last Five Years

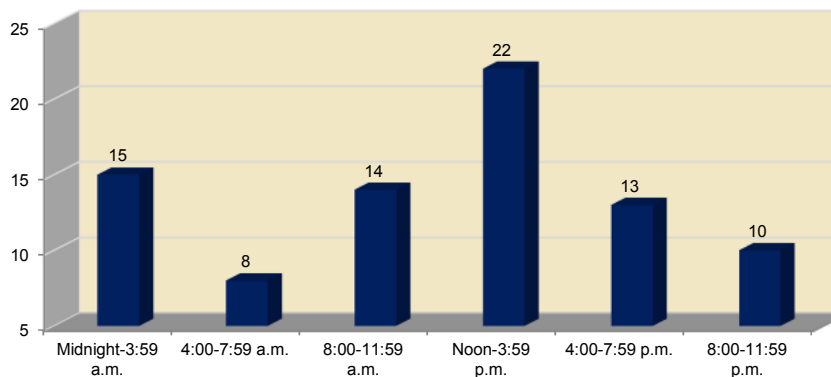


Fire Prevention
Canyon County
Photo provided by Nampa Fire Department



Chubbuck Fire Department Birthday Party
Bannock County
Photo provided by Chubbuck Fire Department

2011 Civilian Fire Casualties by Hour of Day



2011 Civilian Fire Fatalities

1/14/2011
Female – 83 years old
Bannock County
Building fire
1-or 2-family dwelling – Cause undetermined after investigation

2/2/2011
Blaine County
Male – 54 years old
Road freight or transport vehicle fire
Livestock, production – Cause undetermined after investigation

2/3/2011
Benewah County
Undetermined sex and age
Building fire
School, non-adult – Cause undetermined after investigation

2/12/2011
Idaho County
Male – 45 years old
Building fire
1-or 2-family dwelling - Intentional

3/5/2011
Ada County
Female – 25 years old
Building fire
1-or 2-family dwelling – Cause under investigation

4/2/2011
Custer County
Male – 84 years old
Building fire
1-or 2-family dwelling – Failure of equipment

4/13/2011
Nez Perce County
Female – 68 years old
Building fire
1-or 2-family dwelling - Unintentional

5/12/2011
Bannock County
Male – 83 years old
Building fire
1-or 2-family dwelling – Cause undetermined after investigation

5/15/2011
Twin Falls County
Male – 85 years old
Fire in mobile home used as a fixed residence
1-or 2-family dwelling – Cause undetermined after investigation

5/17/2011
Canyon County
Male – 18 years old
Passenger vehicle fire
Street, other – Unintentional

6/6/2011
Twin Falls County
Female – Unknown age
Fire in mobile home used as a fixed residence
1-or 2-family dwelling – Cause under investigation

7/2/2011
Male – 81 years old
Canyon County
Brush or brush and grass mixture fire
Open land or field - Unintentional

8/14/2011
Cassia County
Male – 42 years old
Female – 46 years old
Male – 16 years old
Female – 13 years old
Aircraft fire
Railroad right-of-way – Cause under investigation

9/28/2011
Idaho County
Female – 62 years old
Road freight or transport vehicle fire
Highway or divided highway - Unintentional

10/3/2011
Ada County
Female – 59 years old
Building fire
1-or 2-family dwelling – Cause under investigation

10/5/2011
Kootenai County
Male – 26 years old
Passenger vehicle
Street or road in commercial area – Unintentional

11/11/2011
Idaho County
Male – 62 years old
Fire in motor home, camper or recreational vehicle when used as a structure
Residential, other – Cause undetermined after investigation

12/11/2011
Ada County
Male – 72
Building fire
1-or 2-family dwelling – Unintentional



Fire Stations Across Idaho



Clearwater-Potlatch Timber Protection Association



Hall Mountain Volunteer Fire Association
Station #2



Idaho Falls Station #4



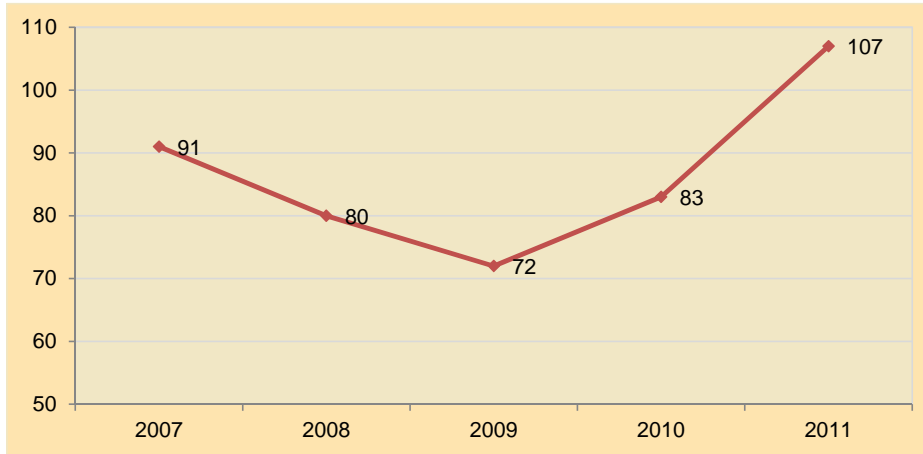
Garden Valley Fire Department



Fire Service Casualties

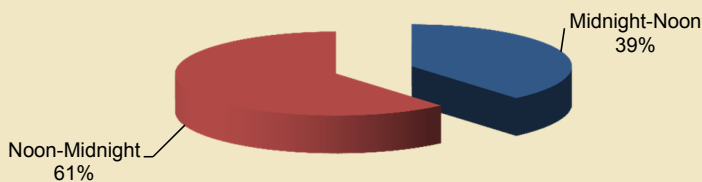
Fire Service Injuries

Fire Service Injuries for Last 5 Years



No fire service fatalities have been reported for the last 7 years.

Fire Service Injuries by Time of Day



Fire Service Training - Minidoka County
Photo provided by Rupert City Fire and Rescue

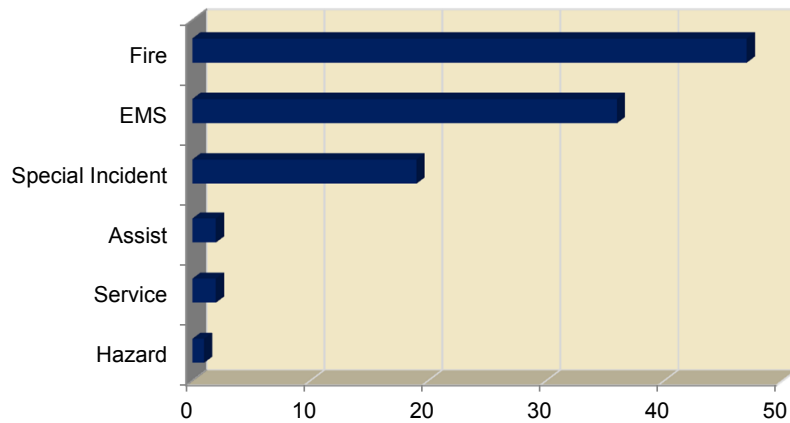
Fire Service Injuries When Fire is Contained in Room of Origin

	Incident Count	% of Total Structure Fire Incidents	\$ Loss	% of Total Loss	Fire Svc Cas	% of Total FS Cas
Not Contained	475	53%	\$27,094,668	89.9%	24	92%
Contained	423	47%	\$3,027,836	10.1%	2	8%
Total Structure Fire Incidents	898		\$30,122,504		26	

"Contained fire" is defined as fire spread that is reasonably expected to remain in check under prevailing conditions.

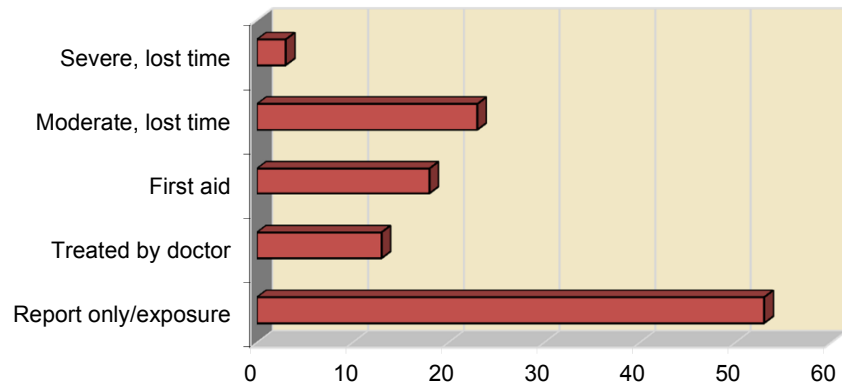
Fire Service Injuries

Fire Service Injury Count by Incident Type

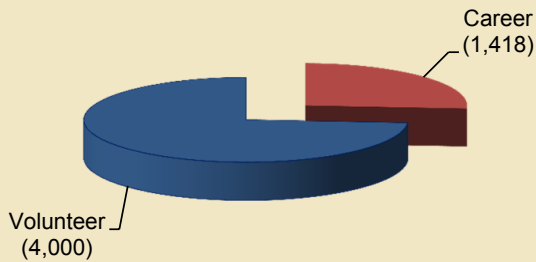


"Fire Service Casualties" are all injuries, deaths or exposures to fire service personnel including casualties occurring in conjunction both with incident responses and non-incident events such as station duties or training.

Fire Service Injuries by Severity of Injuries



Career and Volunteer Fire Service in Idaho



Structure Fire
Kootenai County
Photo provided by Coeur d'Alene Fire Department

Training



School Bus Extrication Drill - Payette County
Photo provided by Payette Fire



Flashover Training - Southern Idaho Fire Academy
Photo provided by Randy Sutton, West End Fire and Rescue



Live Burn Training - Kootenai County
Photo provided by Hauser Lake Fire Protection District



Propane Fire Training - Boundary County
Photo provided by Paradise Valley Fire Protection District



Rural Water Supply Training - Shoshone County
Photo provided by Prichard/Murray Volunteer Fire Department



Practice Burn - Kootenai County
Photo provided by Northern Lakes Fire District

Fire Stations Across Idaho



Parma Rural Fire Department



Westside FPD - Wrencoe Loop Station



Carey RFPD - Gannett Station



Boise Fire Department - Station #15



Craigmont Volunteer Fire Department

The Importance of Data Quality Control in Fire Department Incident Reporting

The incident report is a legal record.

The incident report must accurately reflect the event.

The incident data is used at local, state and national levels.

The incident report is not static. Details of the report should change as more information becomes available due to further investigations by the fire department or due to a change as a direct result of the initial incident. The incident report is updated whenever the conditions or facts of the incident change.

Reporting errors are grouped into two categories: critical and warning.

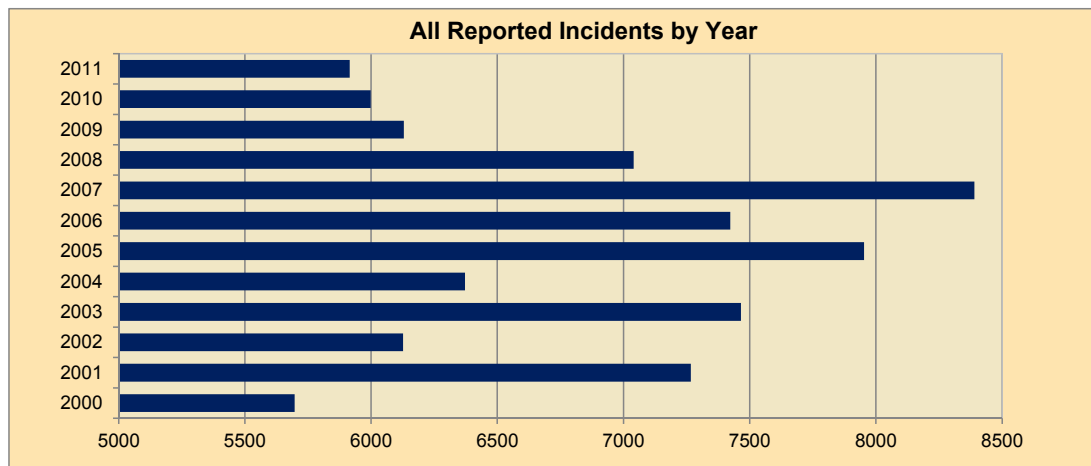
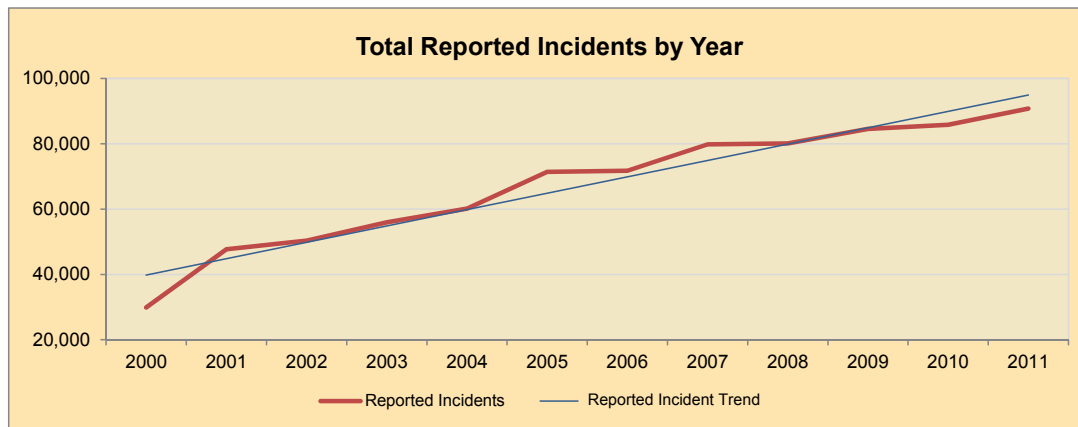
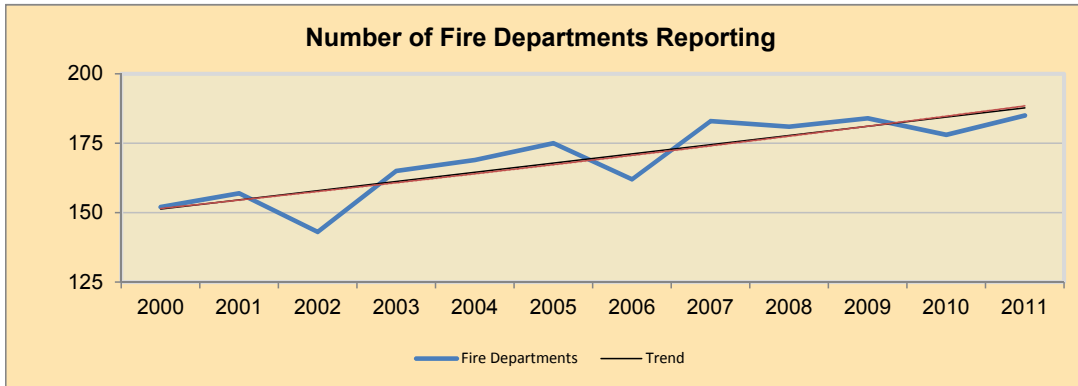
Critical Error – data that is required and must be provided on the report to allow the report to be complete or valid. A report with a critical error is marked as an invalid incident.

Warning Error – data that is either missing or incorrect on the report. A warning error will not prevent the report from being marked as complete or valid.

Examples of quality issues that may not show up as errors on the system but need a recheck for correctness include:

- “Alarm, Arrival and Last Unit Cleared” dates and times can significantly affect the response time calculation.
- “Undetermined” or “Under Investigation” reports can be revised if the cause is determined at a later date.
- Property and Content Loss are estimates and provide valuable information for determining the magnitude of the fire problem and possible financial support for fire protection. Insurance companies do not use report estimates for replacement value of property or contents.

Reporting Trends



Fire Stations Across Idaho



Juliaetta Volunteer Fire Department



Winchester Fire Station



Northern Lakes Fire District - Station #2



Deary Fire Department

Departments NOT Reporting in 2011

These non-reporting departments had not yet submitted incidents as of May 1, 2012. Their reports may have had an effect on the statistics.

Aberdeen/Springfield Fire Dist (Bingham Co)	Hamer FPD (Jefferson Co)
Albion Fire Protection Dist (Cassia Co)	Hope/East Hope FD (Bonner Co)
American Falls City FD (Power Co)	Island Park FPD (Fremont Co)
American Falls Rural Fire Dist (Power Co)	Juliaetta Vol FD (Latah Co)
Ammon FD (Bonneville Co)	Kendrick Vol FD (Latah Co)
Arimo FPD (Bannock Co)	Lapwai FD (Nez Perce Co)
Atlanta Rural FD (Elmore Co)	Meadows Valley FPD (Adams Co)
Atomic City FD (Bingham Co)	Mullan VFD (Shoshone Co)
Bear Fire Dist (Adams Co)	Nezperce FD (Lewis Co)
Bliss FD (Gooding Co)	North Fork Fire Dist (Lemhi Co)
Bovill FD (Latah Co)	North Fremont Fire Dist (Fremont Co)
Bruneau FPD (Owyhee Co)	Oakley FD (Cassia Co)
Cambridge FPD (Washington Co)	Oneida Co FPD (Oneida Co)
Carrot Ridge Vol Fire Dist (Idaho Co)	Pahsimeroi FPD (Lemhi Co)
Castleford FD (Twin Falls Co)	Pierce VFD (Clearwater Co)
Craigmont FD (Lewis Co)	Pocatello Valley FD (Bannock Co)
Culdesac Vol FD (Nez Perce Co)	Potlatch RFPD (Lemhi Co)
Cuprum FD (Adams Co)	Raft River FPD (Cassia Co)
Deary Rural Fire Dist (Latah Co)	Reubens FD (Lewis Co)
Deitrich Rural FD (Lincoln Co)	Ridge Runner FD (Idaho Co)
Downey Vol FD (Bannock Co)	Shoshone Co FPD #3 (Shoshone Co)
Dubois City FD (Clark Co)	South Custer RFPD (Custer Co)
Evergreen Rural Fire Dist (Clearwater Co)	South ID Timber Protective Assn (Valley Co)
Ferdinand Rural/City FD (Idaho Co)	St Joe Valley Fire Dist (Shoshone Co)
Genesee Fire Department (Latah Co)	Stibnite FD (Valley Co)
Glenwood-Caribel Vol Fire Dist (Idaho Co)	Upper Deer Flat FD (Canyon Co)
Grand View FD (Owyhee Co)	Upper Pack River Vol Fire Dist (Bonner Co)
Grangemont Vol Fire Dist (Clearwater Co)	West Jefferson Fire Control Dist (Jefferson Co)

FDID	DEPARTMENT NAME	POPULATION PROTECTED	FIRE	EXPLOSIONS	EMS	HAZARDOUS CONDITION	SERVICE CALL	ASSISTED	FALSE ALARM	NATURAL DISASTER	OTHER	TOTALS	PERCENT OF TOTAL	\$ LOSS	FIRE SVC FATALITY	FIRE SVC INJURY	CIVILIAN FATALITY	CIVILIAN INJURY	
BINGHAM COUNTY																			
11303	ABERDEEN / SPRINGFIELD FIRE DIST	2,000											0	0%					
11360	ATOMIC CITY FD	32											0	0%					
11101	BLACKFOOT FD	35,000	140	5	9	41	37	48	91	0	0		371	0%	\$773,570				
11357	FIRTH FIRE DIST	5,000	25	0	30	6	5	5	0	1	0		72	0%	\$5,000				
11334	FORT HALL FIRE & EMS DIST	9,000	69	1	91	6	7	6	32	0	5		217	0%	\$76,300				
11355	SHELLEY RPD	8,000	22	0	61	5	1	14	2	0	0		105	0%	\$1,682,600				
	TOTALS	59,032	256	6	191	58	50	73	125	1	5		765	1%	\$2,537,470	0	0	0	0
BLAINE COUNTY																			
13302	BELLEVUE FD	2,000	10	0	1	20	2	2	8	0	0		43	0%	\$355,000				
13354	CAREY RURAL FPD	800	4	0	5	12	1	5	3	0	0		30	0%	\$8,500				1
13301	HAILEY FD	8,500	20	0	295	46	22	26	32	1	1		443	0%					
13203	KETCHUM FD	5,000	22	1	265	32	35	45	106	3	0		509	1%	\$404,100				1
13306	SUN VALLEY FD	15,000	4	0	19	11	6	0	58	0	1		99	0%					
13334	WOOD RIVER FIRE & RESCUE	5,000	22	1	608	8	9	58	9	0	0		715	1%	\$1,000				
	TOTALS	36,300	82	2	1,193	129	75	136	216	4	2		1,839	2%	\$768,600	0	1	1	1
BOISE COUNTY																			
15309	CENTERVILLE VFD	500	1	0	0	0	0	0	0	0	0		1	0%	\$5,000				
15330	CLEAR CREEK VFD	250	16	0	6	0	0	0	0	0	0		22	0%	\$2,000				
15311	GARDEN VALLEY RURAL FD	2,800	16	0	87	3	4	4	3	0	0		117	0%	\$275,800				
15345	HORSESHOE BEND FIRE DIST	1,750	11	0	2	15	1	2	0	0	0		31	0%					
15324	IDAHO CITY FD	2,000	9	0	4	2	0	3	2	0	0		20	0%	\$16,050				
15342	LOWMAN VOL FIRE DIST, INC.	300	2	0	1	2	0	0	0	0	0		5	0%					
15301	PLACERVILLE FIRE DIST	300	0	0	1	0	0	0	0	0	0		1	0%					
15313	ROBIE CREEK VFD	450	9	0	5	0	0	1	0	0	0		15	0%					
15335	VALLEY OF THE PINES VFD	650	31	0	2	0	0	6	0	0	0		39	0%					
15340	WILDERNESS RANCH FPD	2,000	10	0	34	0	3	3	1	0	1		52	0%					
	TOTALS	11,000	105	0	142	22	8	19	6	0	1		303	0%	\$298,850	0	0	0	0
BONNER COUNTY																			
17314	CLARK FORK VALLEY FIRE & RESCUE	2,600											0	0%					
17344	COOLIN-CAVANAUGH BAY FPD	640	6	0	2	7	3	2	1	0	0		21	0%	\$52,500				1
17316	HOPE-EAST HOPE VOL FIRE DIST	700											0	0%					
17339	NORTH OF THE NARROWS FD	500	0	0	1	0	0	0	0	0	0		1	0%					
17333	NORTHSIDE FIRE DIST	10,000	35	0	1	125	15	71	19	0	0		266	0%					
17341	SAGLE FIRE DIST	8,500	57	0	456	22	60	170	24	1	1		791	1%	\$173,000				
17360	SAM OWEN FIRE DIST	300	24	0	32	36	4	1	1	0	1		99	0%	\$10,000				
17201	SANDPOINT FD	9,000	39	2	670	85	53	100	60	0	0		1,009	1%	\$367,750				1
17349	SCHWEITZER FIRE DIST	1,000	1	0	62	5	1	0	4	0	1		74	0%					
17337	WEST PEND OREILLE FIRE DIST	5,000	41	0	133	74	63	74	17	1	0		403	0%	\$553,190				
17319	WEST PRIEST LAKE FIRE DIST	700	7	0	9	2	1	3	0	0	0		25	0%	\$29,000				
17335	WESTSIDE FPD	5,000	13	1	32	13	3	15	7	0	0		84	0%	\$305,500				
	TOTALS	43,940	223	3	1,398	369	203	435	134	5	3		2,773	3%	\$1,490,940	0	2	0	2

FDID	DEPARTMENT NAME	POPULATION PROTECTED	FIRE	EXPLOSIONS	EMS	HAZARDOUS CONDITION	SERVICE CALL	ASSISTED	FALSE ALARM	NATURAL DISASTER	OTHER	TOTALS	PERCENT OF TOTAL	\$ LOSS	FIRE SVC FATALITY	FIRE SVC INJURY	CIVILIAN FATALITY	CIVILIAN INJURY	
BONNEVILLE COUNTY																			
19315	AMMON FD	14,000										0	0%						
19101	GREATER SWAN VALLEY FPD #2	80,000	6	0	86	0	2	8	1	0	0	103	0%	\$3,500					
19340	IDAHO FALLS FD	1,000	236	5	2,173	165	33	291	336	0	12	3,251	4%	\$2,156,830					2
19317	UCON FD	1,025	0	0	0	0	1	3	1	0	0	5	0%	\$60					
	TOTALS	96,025	242	5	2,259	165	36	302	338	0	12	3,359	4%	\$2,160,390	0	0	0	0	2
BOUNDARY COUNTY																			
21301	BONNERS FERRY FD	3,000	6	0	2	6	1	0	6	0	0	21	0%	\$145,100					
21333	CURLEY CREEK VFD	300	4	0	0	0	6	19	1	0	0	30	0%						
21344	HALL MOUNTAIN VOL FIRE ASSN, INC	1,500	6	0	21	10	2	3	0	1	0	43	0%	\$570,000					
21315	MORTIE SPRINGS FD	668	5	0	0	0	4	33	0	0	0	42	0%	\$10,000					
21341	NORTH BENCH FIRE DIST	2,000	10	0	50	29	1	5	1	0	0	96	0%	\$63,050					
21348	PARADISE VALLEY FIRE DIST	2,675	1	0	19	3	0	0	1	0	0	24	0%						
21346	SOUTH BOUNDARY FPD	2,700	14	0	40	21	1	5	4	0	0	85	0%	\$105,000					
	TOTALS	12,843	46	0	132	69	15	65	13	1	0	341	0%	\$893,150	0	0	0	0	0
BUTTE COUNTY																			
23316	ARCO FD	1,100	12	0	10	6	1	2	2	0	0	33	0%	\$105,030					3
23320	INL FD											0	0%						
23341	LOST RIVER FPD	1,800	5	0	0	0	0	2	0	0	0	7	0%	\$24,000					
	TOTALS	2,900	17	0	10	6	1	4	2	0	0	40	0%	\$129,030	0	3	0	0	0
CAMAS COUNTY																			
25301	CITY OF FAIRFIELD FD	1,013	6	0	4	1	0	0	2	0	0	13	0%	\$10,000					1
25340	WEST MAGIC FIRE DIST	250	2	0	2	0	0	0	0	0	1	5	0%						
	TOTALS	1,263	8	0	6	1	0	0	2	0	1	18	0%	\$10,000	0	0	0	0	1
CANYON COUNTY																			
27211	CALDWELL CITY FIRE & RESCUE	55,000	185	2	2,274	89	371	553	216	1	16	3,707	4%	\$1,530,860					26
27246	CALDWELL RURAL FIRE DIST	10,000	49	0	118	6	16	67	16	0	0	272	0%	\$21,500					1
27344	MELBA RURAL FPD	3,000	51	1	15	5	24	26	2	0	0	124	0%	\$171,700					
27336	MIDDLETON RURAL FPD	18,356	97	0	604	15	100	203	26	0	7	1,052	1%	\$203,125					1
27101	NAMPA FD	100,662	214	14	4,882	112	1,043	778	452	0	8	7,503	8%	\$1,248,756					7
27338	PARMA FD	10,000	20	0	101	1	1	3	2	0	0	128	0%	\$54,000					
27109	SOUTHWEST HAZ MAT REGIONAL TEAM	7,600	0	0	0	5	1	0	0	0	0	6	0%						
27339	UPPER DEER FLAT FD											0	0%						
27307	WILDER RURAL FPD	4,090	23	0	98	2	7	32	1	0	2	165	0%	\$22,000					
	TOTALS	208,708	639	17	8,092	235	1,563	1,662	715	1	33	12,957	14%	\$3,251,941	0	40	1	19	0
CARIBOU COUNTY																			
29306	BANCROFT FD	350	2	0	0	0	0	0	0	0	0	2	0%						
29305	CARIBOU COUNTY FD	2,700	5	0	2	0	0	2	0	0	0	9	0%						
29309	GRACE FD	1,000	1	0	0	0	0	0	0	0	0	1	0%						
29301	SODA SPRINGS FD	3,000	5	0	0	1	1	1	1	1	0	9	0%	\$296,000					
	TOTALS	7,050	13	0	2	1	1	3	1	0	0	21	0%	\$296,000	0	0	0	0	0

FDID	DEPARTMENT NAME	POPULATION PROTECTED	FIRE	EXPLOSIONS	EMS	HAZARDOUS CONDITION	SERVICE CALL	ASSISTED	FALSE ALARM	NATURAL DISASTER	OTHER	TOTALS	PERCENT OF TOTAL	\$ LOSS	FIRE SVC FATALITY	FIRE SVC INJURY	CIVILIAN FATALITY	CIVILIAN INJURY	
CASSIA COUNTY																			
31343	ACE FIRE PROTECTION ASSN UNIT	500											NO ACTIVITY						
31342	ALBION FPD	305											0	0%					
31201	BURLEY CITY FDN CASSIA FIRE DIST	20,500	64	4	524	15	8	103	78	1	0	797	1%	\$326,800	1	4			
31334	DECLLO FD	338	43	0	6	1	0	2	3	0	0	55	0%						
31340	OAKLEY FPD	1,400										0	0%	\$399,350					
31338	RAFT RIVER FPD	500										0	0%						
	TOTALS	23,543	107	4	530	16	8	105	81	1	0	852	1%	\$726,150	0	1	4	0	0
CLARK COUNTY																			
33329	DUBOIS CITY FD	1,000											0	0%	\$0				
	TOTALS	1,000	0	0	0	0	0	0	0	0	0	0	0%	\$0	0	0	0	0	0
CLEARWATER COUNTY																			
88172	CLEARWATER POTLATCH TPA	10,000	42	0	0	0	0	0	0	0	0	0	42	0%	\$1,250				
35301	ELK RIVER FD	100											NO ACTIVITY						
35341	EVERGREEN RURAL FIRE DIST	200										0	0%						
35330	GRANGEMONT VOL FIRE DIST	180										0	0%						
35303	OROFINO FD	3,247	8	0	18	0	5	6	4	0	0	41	0%	\$97,000	1	4			
35309	PIERCE VFD	700										0	0%						
35338	SUNNYSIDE RURAL FIRE DIST	400	5	0	0	0	0	0	0	0	0	5	0%	\$55,000	1	1			
35305	TWIN RIDGE RURAL FD	500	1	0	0	0	0	0	0	0	0	1	0%						
35344	UPPER FORDS CREEK RURAL FD	200	1	0	0	0	0	1	0	0	0	2	0%						
35312	WEIPPE FD	1,300	11	0	7	1	0	1	1	0	0	21	0%						
	TOTALS	16,827	68	0	25	1	5	8	5	0	0	112	0%	\$153,250	0	2	0	5	0
CUSTER COUNTY																			
37302	CHALLUS VFD		7	0	3	0	0	0	0	0	0	10	0%						
37305	MACKEY FD	566										0	0%						
37334	NORTH CUSTER FD	2,000	7	0	16	0	0	5	0	0	0	28	0%	\$72,250					1
37301	SAWTOOTH VALLEY RURAL FD	400	4	0	14	2	0	1	0	0	0	21	0%						
37354	SOUTH CUSTER RURAL FPD	1,400										0	0%						
	TOTALS	4,366	11	0	30	2	0	6	0	0	0	59	0%	\$72,250	0	0	1	0	0
ELMORE COUNTY																			
39338	ATLANTA RURAL FD	40										0	0%						
39303	GLENNS FERRY FD	1,900	0	0	1	2	0	0	2	0	0	5	0%						
39336	KING HILL FPD	2,000	22	0	11	2	0	14	2	0	0	51	0%	\$120,000					
39334	MOUNTAIN HOME RURAL FPD	4,000	45	1	0	6	9	5	7	0	0	73	0%	\$1,016,600					
39301	MOUNTAIN HOME VFD	14,000	32	0	0	4	14	10	22	0	0	82	0%	\$93,600					
39309	OASIS VFD	175	5	0	0	0	0	2	0	0	0	7	0%						
	TOTALS	22,115	104	1	12	14	23	31	33	0	0	218	0%	\$1,230,200	0	0	0	0	0
FRANKLIN COUNTY																			
41301	FRANKLIN COUNTY FIRE DIST	13,000	29	0	20	25	11	11	6	0	0	102	0%	\$702,600					4
	TOTALS	13,000	29	0	20	25	11	11	6	0	0	102	0%	\$702,600	0	0	0	0	4

FDID	DEPARTMENT NAME	POPULATION PROTECTED	FIRE	EXPLOSIONS	EMS	HAZARDOUS CONDITION	SERVICE CALL	ASSISTED	FALSE ALARM	NATURAL DISASTER	OTHER	TOTALS	PERCENT OF TOTAL	\$ LOSS	FIRE SVC FATALITY	FIRE SVC INJURY	FATALITY	CIVILIAN INJURY	
FREMONT COUNTY																			
43334	ISLAND PARK FPD	10,000											0	0%					
43336	NORTH FREMONT FIRE DIST, INC	3,000											0	0%					
43338	SOUTH FREMONT FIRE DIST	7,500	26	0	7	11	2	8	3	0	0	0	57	0%	\$1,617,100	0	0	0	0
TOTALS		20,500	26	0	7	11	2	8	3	0	0	0	57	0%	\$1,617,100	0	0	0	0
GEM COUNTY																			
45301	EMMETT FD	6,800	30	0	24	20	16	8	18	6	0	0	122	0%	\$147,700				
45334	GEM COUNTY FPD #1	10,000	81	1	29	10	2	9	10	1	1	1	144	0%	\$37,500				
45339	GEM COUNTY FPD #2	1,500	22	0	2	0	0	2	0	0	0	0	26	0%					
TOTALS		18,300	133	1	55	30	18	19	28	7	1	1	292	0%	\$185,200	0	0	0	0
GOODING COUNTY																			
47341	BLISS FIRE DIST	750											0	0%					
47301	GOODING FD	6,000	46	1	149	15	11	31	12	0	1	1	266	0%	\$180,200				
47323	HAGERMAN FPD	2,500	32	3	42	5	7	4	7	0	0	0	101	0%	\$146,550				
47335	WENDELL CITY FD	3,500	9	0	3	4	1	0	5	0	0	0	22	0%	\$82,700				
47303	WENDELL RURAL FIRE DIST	3,000	64	0	44	18	2	23	29	0	0	0	156	0%	\$129,200				
TOTALS		15,750	151	4	238	42	21	58	29	0	2	0	545	1%	\$538,650	0	0	0	0
IDAHO COUNTY																			
49352	BPC VOL RFD, INC.	280	2	0	1	0	0	0	0	0	0	0	3	0%					
49340	CARROT RIDGE VOL FIRE DIST	200											0	0%					
49310	COTTONWOOD VFD	1,000	5	0	2	1	0	0	0	0	0	0	8	0%					
49335	COTTONWOOD RURAL FD	600	6	0	0	0	0	1	0	0	0	0	7	0%					1
49316	ELK CITY VFD	400											0	NO ACTIVITY					
49327	FERDINAND RURAL/CITY FD	150											0	0%					
49375	GLENWOOD/CARIBEL VOL FIRE DIST	500											0	0%					
49308	GRANGEVILLE CITY FD	3,500	11	0	0	2	0	0	3	0	0	0	16	0%	\$44,800				
49334	GRANGEVILLE RURAL FD	14	0	0	1	0	0	0	1	0	0	0	16	0%	\$164,900				
49362	HARPSTER FPD	300	2	0	0	0	1	2	0	0	0	0	5	0%					
49330	KOOSKIA FD	3,000	19	0	1	2	0	4	0	0	0	0	26	0%	\$524,260				2
49336	RIDGE RUNNER FD	800											0	0%					
49350	RIGGINS CITY FD	852											0	0%					
49338	SALMON RIVER RURAL FD	1,800	14	0	4	1	0	6	0	0	0	0	25	0%	\$220,000				1
49370	SESECH MEADOWS RURAL FIRE DIST	200											0	NO ACTIVITY					
49329	STITES FD	300											0	NO ACTIVITY					
49311	WHITE BIRD FD	500	3	0	0	0	7	1	0	0	0	0	11	0%					
TOTALS		14,382	76	0	8	7	8	14	4	0	0	0	117	0%	\$953,960	0	0	3	2
JEFFERSON COUNTY																			
51334	CENTRAL FIRE DIST	20,000	64	1	2	18	15	29	19	0	0	0	148	0%	\$331,100				3
51337	HAMER FPD	86											0	0%					
51314	ROBERTS FD	647	1	0	0	0	0	1	0	0	0	0	2	0%					
51340	WEST JEFFERSON FIRE CONTROL DIST	1,200											0	0%					
TOTALS		21,933	65	1	2	18	15	30	19	0	0	0	150	0%	\$331,100	0	3	0	0

FDID	DEPARTMENT NAME	POPULATION PROTECTED	FIRE	EXPLOSIONS	EMS	HAZARDOUS CONDITION	SERVICE CALL	ASSISTED	FALSE ALARM	NATURAL DISASTER	OTHER	TOTALS	PERCENT OF TOTAL	\$ LOSS	FIRE SVC FATALITY	FIRE SVC INJURY	CIVILIAN FATALITY	CIVILIAN INJURY	
JEROME COUNTY																			
53353	FIRST SEGREGATION FIRE DIST	2,500	34	0	26	21	2	24	1	0	0	1	109	0%	\$221,700				
53201	JEROME CITY FD	9,700	47	0	687	30	22	233	66	0	0	1	1,086	1%	\$284,500				
53333	JEROME RURAL FIRE DIST #1	10,000	110	0	7	90	17	36	9	1	0	0	270	0%	\$444,300				
	TOTALS	22,200	191	0	720	141	41	293	76	1	2	1,465	2%	\$950,500	0	0	0	0	0
KOOTENAI COUNTY																			
55201	COEUR D'ALENE FD	45,000	142	8	5,387	86	308	554	302	2	2	2	6,791	7%	\$680,350				
55360	EAST SIDE FPD	1,800	7	0	33	5	3	16	14	0	0	0	78	0%					
55346	HAUSER LAKE FPD	2,200	24	0	121	3	6	9	5	0	0	0	168	0%	\$79,000				
55234	KOOTENAI CO FIRE & RESCUE	45,000	170	0	3,696	77	285	575	196	0	6	6	5,005	6%	\$587,700		19	1	3
55209	KOOTENAI CO REGION 1 HAZMAT TEAM	0	0	0	0	3	2	0	0	0	0	0	5	0%					
55354	MICA-KIDD ISLAND FPD	700	10	1	48	1	5	14	7	2	0	0	88	0%	\$18,500				
55342	NORTHERN LAKES FPD	34,000	110	0	2,240	64	270	685	107	1	4	4	3,461	4%	\$248,050		19	1	1
55338	SPIRIT LAKE FPD	8,250	59	1	274	24	28	40	13	1	1	1	441	0%	\$66,277				
55352	TIMBERLAKE FPD	8,000	41	1	367	8	28	72	19	0	0	0	536	1%	\$10,000		1		
55336	WORLEY FPD	3,000	26	0	109	3	6	56	6	0	0	0	206	0%					
	TOTALS	147,950	589	11	12,275	274	941	2,001	669	6	13	16,779	18%	\$1,689,877	0	39	1	4	0
LATAH COUNTY																			
57309	BOVILL FD	350											0	0%					
57342	DEARY RURAL FIRE DIST	2,000											0	0%					
57338	GENESEE FD	2,100											0	0%					
57307	JULIAETTA VFD	625											0	0%					
57306	KENDRICK VFD	400											0	0%					
57301	MOSCOW CITY FD	22,000	82	0	461	64	15	48	209	2	1	1	882	1%	\$1,809,330				
57334	MOSCOW RURAL DISTRICT	10,000	20	0	64	11	2	31	4	0	0	0	132	0%	\$301,900				
57336	POTLATCH RURAL FPD	791											0	0%					
57340	TROY RURAL FD	2,500											0	0%					
57304	TROY VFD												0	0%					
	TOTALS	40,766	102	0	525	75	17	79	213	2	1	1,014	1%	\$2,111,230	0	0	0	0	0
LEMHI COUNTY																			
59310	ELK BEND FPD	300											NO ACTIVITY						
59304	GIBBONSVILLE VFD	200											0	0%					
59315	LEADORE FD	1,900	1	0	0	0	0	1	0	0	0	0	2	0%					
59330	LEMHI COUNTY FPD #1	4,000	2	0	0	0	0	0	0	0	0	0	2	0%	\$3,500				
59333	NORTH FORK FIRE DIST	250											0	0%					
59344	PAHSIMEROI VFD	50											0	0%					
59351	WILLIAMS LAKE VFD	150											NO ACTIVITY						
	TOTALS	6,850	3	0	0	0	0	1	0	0	0	4	0%	\$3,500	0	0	0	0	0
LEWIS COUNTY																			
61304	CRAIGMONT FD	500											0	0%					
61334	KAMIAH VFD	5,400	22	0	15	10	5	0	1	0	0	0	53	0%	\$452,500				
61310	NEZPERCE FD	1,500											0	0%					
61306	REUBENS FD	72											0	0%					
61308	WINCHESTER FD	500	8	0	1	0	1	1	0	0	0	0	11	0%					
61312	WINCHESTER RFD	7	7	0	0	0	0	0	0	0	0	0	7	0%					
	TOTALS	7,972	30	0	16	10	6	1	1	1	0	0	71	0%	\$452,500	0	0	0	0

FDID	DEPARTMENT NAME	POPULATION PROTECTED	FIRE	EXPLOSIONS	EMS	HAZARDOUS CONDITION	SERVICE CALL	ASSISTED	FALSE ALARM	NATURAL DISASTER	OTHER	TOTALS	PERCENT OF TOTAL	\$ LOSS	FIRE SVC FATALITY	FIRE SVC INJURY	CIVILIAN FATALITY	CIVILIAN INJURY
LINCOLN COUNTY																		
63306	DIETRICH RURAL FD	500											0	0%				
63308	RICHFIELD FPD	800	7	0	4	0	0	1	0	1	0	0	13	0%				
63301	SHOSHONE CITY/RURAL FIRE DIST	600	1	0	0	0	0	0	0	0	0	0	1	0%				
	TOTALS	1,900	8	0	4	4	0	0	1	1	0	0	14	0%	\$0	0	0	0
MADISON COUNTY																		
65234	MADISON COUNTY FD	38,440	70	2	59	51	18	103	108	0	4	4	415	0%	\$468,375	0	0	0
	TOTALS	38,440	70	2	59	51	18	103	108	0	4	4	415	0%	\$468,375	0	0	0
MINIDOKA COUNTY																		
67336	MINIDOKA COUNTY FPD	10,000	89	1	311	8	22	16	23	1	0	0	471	1%	\$448,910			
67301	RUPERT CITY FIRE & RESCUE	5,640	15	1	69	15	2	5	9	0	0	0	116	0%				
67334	WEST END FPD	8,800	73	0	146	5	2	5	8	1	1	1	241	0%				
	TOTALS	24,440	177	2	526	28	26	26	40	2	1	1	828	1%	\$448,910	0	0	0
NEZ PERCE COUNTY																		
69333	BIG CANYON FIRE DIST	500	2	0	0	1	1	0	0	0	0	0	4	0%	\$41,000			
69311	CULDESAC VFD	350											0	0%				
69306	LAPWAI FD	1,200											0	0%				
69201	LEWISTON FD	37,000	125	3	1,784	73	111	111	192	0	1	1	2,400	3%	\$2,025,351			1
69209	LEWISTON HAZ MAT TEAM		0	0	0	3	0	0	0	0	0	0	3	0%				
69344	NEZ PERCE CO FD	6,000	44	0	0	0	2	35	0	0	0	0	81	0%	\$447,050			
69345	WHEATLAND FPD	275												NO ACTIVITY				
	TOTALS	45,325	171	3	1,784	77	114	146	192	0	1	1	2,488	3%	\$2,513,401	0	0	1
ONEIDA COUNTY																		
71301	ONEIDA COUNTY VFD/MALAD FD	6,000											0	0%				
	TOTALS	6,000	0	0	0	0	0	0	0	0	0	0	0	0%	\$0	0	0	0
OWYHEE COUNTY																		
73340	BRUNEAU FPD	200											0	0%				
73338	GRAND VIEW FPD	3,000											0	0%				
73334	HOMEDALE RFPD	5,000	39	0	9	1	0	5	8	0	0	0	62	0%	\$375,900			1
73336	MARSING CITY/RURAL FPD	20,000	43	0	7	4	1	3	5	0	0	0	63	0%	\$2,500			
73342	MURPHY-REYNOLDS-WILSON FPD	1,200	16	0	2	7	2	1	0	0	0	0	28	0%	\$152,000			
73320	SILVER CITY FIRE & RESCUE, INC.	30	2	0	4	0	0	0	0	0	0	0	6	0%				
	TOTALS	29,430	100	0	22	12	3	9	13	0	0	0	159	0%	\$530,400	0	0	1
PAYETTE COUNTY																		
75302	FRUITLAND FD	4,684	33	0	4	1	3	3	3	0	0	0	47	0%	\$38,300			
75336	NEW PLYMOUTH RURAL FIRE DIST	2,500	41	0	4	7	5	15	2	0	0	0	74	0%	\$102,550			
75301	PAYETTE CITY FD	8,200	35	0	151	40	126	14	34	4	1	1	405	0%	\$707,900			1
75334	PAYETTE RURAL FD	8,000	20	0	9	2	4	9	4	0	0	0	48	0%	\$40,000			1
	TOTALS	23,384	129	0	168	50	138	41	43	4	1	1	574	1%	\$888,750	0	2	0

FDID	DEPARTMENT NAME	POPULATION PROTECTED	FIRE	EXPLOSIONS	EMS	HAZARDOUS CONDITION	SERVICE CALL	ASSISTED	FALSE ALARM	NATURAL DISASTER	OTHER	TOTALS	PERCENT OF TOTAL	\$ LOSS	FIRE SVC FATALITY	FIRE SVC INJURY	CIVILIAN FATALITY	CIVILIAN INJURY	
POWER COUNTY																			
77302	AMERICAN FALLS CITY FD	6,200											0	0%					
77330	AMERICAN FALLS RURAL FPD	50											0	0%					
77306	ROCKLAND RURAL FIRE DIST	1,000	2	0	3	0	0	2	1	0	0	0	8	0%	\$113,000				
	TOTALS	7,250	2	0	3	0	0	2	2	1	0	0	8	0%	\$113,000	0	0	0	0
SHOSHONE COUNTY																			
79304	MULLAN VOL FD	1,000											0	0%					
79305	PRICHARD/MURRAY VOL FD	300	5	0	57	4	2	3	0	0	0	0	71	0%	\$11,500				
79326	SHOSHONE CO FPD #1	4,500	16	3	327	16	12	11	9	0	2	2	396	0%	\$51,200				1
79234	SHOSHONE CO FPD #2	9,000	55	2	562	23	80	81	29	1	8	8	841	1%	\$154,855				1
79316	SHOSHONE CO FPD #3	100											0	0%					
79310	ST. JOE VALLEY FIRE DIST	250											0	0%					
	TOTALS	14,150	76	5	946	43	94	95	38	1	10	1,308	1%	\$217,555	0	0	0	0	2
TETON COUNTY																			
81334	TETON COUNTY FPD	10,000	31	2	285	28	25	18	35	1	0	0	425	0%					
	TOTALS	10,000	31	2	285	28	25	18	35	1	0	0	425	0%	\$0	0	0	0	0
TWIN FALLS COUNTY																			
83207	BUHL FD	9,000	65	1	50	30	11	33	24	0	0	0	214	0%	\$262,200				1
83340	CASTLEFORD FD	277											0	0%					
83338	FILER FD	8,000	44	0	5	34	1	27	9	3	0	0	123	0%	\$150				
83334	ROCK CREEK RURAL FPD	14,000	38	0	392	16	14	84	21	0	3	3	568	1%	\$191,850				1
83349	SALMON TRACT RURAL FPD	750	1	0	0	0	0	0	0	0	0	0	1	0%					1
83101	TWIN FALLS FD	50,000	115	4	538	2,139	153	241	262	12	58	58	3,522	4%	\$674,270			1	4
	TOTALS	82,027	263	5	985	2,219	179	385	316	15	61	4,428	5%	\$1,128,470	0	1	2	2	5
VALLEY COUNTY																			
85334	CASCADE RURAL FPD	2,500	18	2	199	10	37	27	9	0	1	1	303	0%	\$12,000				
85304	DONNELLY RURAL FPD	3,000	19	0	148	13	69	39	16	0	4	4	308	0%					
85340	HIGH VALLEY FIRE PROTECTION ASSN	200											0	0%					
85339	MCCALL FPD	10,000	32	1	598	41	65	77	85	5	3	3	907	1%	\$982,550				
85307	SO IDAHO TIMBER PROTECTIVE ASSN												0	0%					
85359	STIBNITE FD	35											0	0%					
	TOTALS	15,735	69	3	945	64	171	143	110	5	8	1,518	2%	\$994,550	0	0	0	0	0
WASHINGTON COUNTY																			
87330	CAMBRIDGE FPD	900											0	0%					
87336	MIDVALE FPD	850	14	0	7	7	1	0	1	0	0	0	23	0%	\$5,000				
87334	WEISER AREA RURAL FPD	4,200	28	0	7	30	2	13	7	1	0	0	88	0%					
87301	WEISER CITY FIRE & RESCUE	5,000	42	0	3	19	7	11	18	1	2	2	103	0%	\$5,000				
	TOTALS	10,950	84	0	10	56	10	24	26	2	2	2	214	0%	\$10,000	0	0	0	0
STATE OF IDAHO TOTALS			5,914	118	56,681	4,990	6,427	10,407	5,936	80	207	90,782	100%	\$39,114,109	0	107	21	61	

Glossary of Terms and Abbreviations

\$Loss - Combined estimated property and content dollar loss as reported by reporting agencies.

Alarm - Any notification made to the fire department that a situation exists or may exist requiring a response.

Arson - The crime of maliciously and intentionally or recklessly starting a fire or causing an explosion.

Automatic Extinguishing Systems (AES) - A device or system providing an emergency fire extinguishing function without the necessity of human intervention, typically a water spray.

Casualty - A person who is injured or killed at the scene of a fire or other reported incident

Cause - The circumstances or conditions that brought about or resulted in a fire or explosion incident, damage to property resulting from the fire or explosion incident, or bodily injury or loss of life resulting from the fire or explosion incident.

Civilian Fire Casualty - Any non-fire service person injured or killed as a direct result of a fire-related incident.

Confined Fire - Fire where the flame does not extend beyond a combustible container such as cooking vessels, chimneys or flues, trash containers, etc.

Contained Fire - Fire spread that is reasonably expected to remain in check under prevailing conditions.

Crop - Cultivated vegetation such as grains, trees, orchard, nursery stock, etc.

EMS - Emergency Medical Service.

Fatality - An injury that is fatal or becomes fatal within one year of the incident.

Hazardous Materials - Any material that is air-reactive, corrosive, explosive, flammable gas, organic peroxide, oxidizing material, radioactive, toxic, unstable, water-reactive, or a flammable or combustible liquid; and any substance or mixture of substance that is an irritant or a strong sensitizer or generates pressure through exposure to heat, decomposition, or other means.

Incident - An event to which the reporting agency responds or should have responded. An incident may have more than one response.

Incident Record - The official file on an incident.

Incident Report - A document prepared by fire department personnel about a particular incident.

Mobile Property - Property designed to be movable whether or not it still is, such as vehicles, ships, and airplanes.

Mutual Aid - Assistance given to or received by a fire department, whether fire or non-fire aid, by another fire department outside its normal jurisdiction.



NFIRS - National Fire Incident Reporting System.

Non-Fire Service Personnel - All persons involved with an incident who are not fire service personnel such as police, utility company employees, non-fire service medical personnel or civilians.

Origin - The physical location where a heat source and fuel came in contact with each other.

Overpressure - A transient air pressure, such as the shock wave from an explosion that is greater than the surrounding atmospheric pressure.

Prescribed Fire - Any fire ignited by management actions to meet specific objectives. A written, approved prescribed fire plan must exist prior to ignition. The controlled application of fire to wildland fuels in either their natural or modified state under specified environmental conditions allowing the fire to be confined to a predetermined area and, at the same time, to produce the intensity of heat and rate of spread required to attain planned resource management objectives.

Property Use - The actual use of the property where the incident occurred. A building, for example, could serve as a garage or a hospital or a department store. The use of property does not define any of the other important fire-related details of a property such as access, ownership, size, internal weaknesses in fire defense or construction.

Response Time - The length of time of time between notification of and arrival at an incident scene as reported by the responding agency.

Structure - An assembly of materials forming a construction for occupancy or use to serve a specific purpose. This includes, but is not limited to, buildings, open platforms, bridges, roof assemblies over open storage or process areas, tents, air-supported structures, and grandstands.

Structure Fire - Any fire inside, on, under, or touching a structure.

Wildland-Urban Interface Area - The geographical area where structures and other human development meet or intermingle with wildland or vegetative fuels.

Wildland - Land in the uncultivated more or less natural state and covered by timber, woodland, brush, or grass. An area in which development is essentially nonexistent except for roads, railroads, power lines and similar facilities.

Wildland Fire - Any involved vegetative fuel, other than prescribed fire, that occurs in wildland. A wildland fire may expose or possibly consume structures.

Fire Stations Across Idaho



Sagle Fire District - Careywood Station



Rock Creek Rural Fire Department - Station #1



Mackay Fire and South Custer Fire



Fernwood Rural Fire Protection District

**Fire Department Information by County
Personnel, Funding and Number of Stations***

FIRE DEPARTMENT	COUNTY	CAREER FIREFIGHTERS	VOLUNTEERS: PAID- PER-CALL	VOLUNTEERS: NO-PAY- PER-CALL	TOTAL FIREFIGHTERS	FUNDING	NUMBER OF STATIONS IN JURISDICTION
Boise FD	Ada	289	0	0	289	Tax Base	19
Eagle Fire Protection Dist	Ada	35	0	40	75	Tax Base	3
Kuna Rural Fire Dist	Ada	7	30	0	37	Tax Base	2
Meridian FD	Ada	65	14	0	79	Tax Base	5
North Ada County Fire & Rescue Dist	Ada	21	0	0	21	Tax Base	3
Star Joint Fire Protection Dist	Ada	9	0	20	29	Tax Base	2
Whitney Fire Dist	Ada	1	0	0	1	Tax Base	2
County Totals		427	44	60	531		36
Bear Fire Dist	Adams	0	0	12	12	Grants	1
Council Volunteer Fire Dist	Adams	0	0	15	15	Tax Base	1
Cuprum Volunteer FD	Adams	0	0	4	4	Subscription Dues	1
Indian Valley Rural FD	Adams	0	0	19	19	Tax Base	3
Meadows Valley Fire Protection Dist	Adams	0	0	12	12	Tax Base	1
County Totals		0	0	62	62		6
Arimo FD	Bannock	0	0	8	8	Tax Base	1
Chubbuck FD	Bannock	7	37	0	44	Tax Base	1
Downey Volunteer Fire Dist	Bannock	0	0	0	0	Tax Base	1
Inkom FD	Bannock	0	0	0	0	Tax Base	1
Lava Hot Springs Volunteer FD	Bannock	0	0	18	18	Tax Base	1
McCammon Volunteer FD	Bannock	0	10	0	10	Tax Base	1
Pocatello FD	Bannock	72	0	0	72	Tax Base	5
Pocatello Valley FD	Bannock	0	0	0	0	Private	1
County Totals		79	47	26	152		12
Bear Lake Volunteer Fire Protection Dist	Bear Lake	0	0	0	0	Tax Base	9
Montpelier FD	Bear Lake	0	18	0	18	Tax Base	1
County Totals		0	18	0	18		10
Emida Fire Dist	Benewah	0	0	8	8	Tax Base	1
Fernwood Rural Fire Protection Dist	Benewah	0	0	13	13	Tax Base	1
Gateway Fire Protection Dist	Benewah	1	14	0	15	Tax Base	1
Potlatch Corp SMC (Plant)	Benewah	0	0	0	0	Other	1
St. Maries Fire Protection Dist	Benewah	1	0	44	45	Tax Base	3
Tensed Rural Fire Dist	Benewah	0	0	0	0	Tax Base	1
County Totals		2	14	65	81		8
Aberdeen/Springfield Fire Dist	Bingham	0	25	0	25	Tax Base	2
Atomic City FD	Bingham	0	0	11	11	Grants	1
Blackfoot FD	Bingham	24	30	0	54	Tax Base	2
Firth Fire Dist	Bingham	0	20	0	20	Tax Base	2
Fort Hall Fire & EMS Dist	Bingham	21	6	0	27	Tribal Funds	1
Shelley-Firth Rural Fire Dist	Bingham	0	20	0	20	Tax Base	1
County Totals		45	101	11	157		9



**Fire Department Information by County
Personnel, Funding and Number of Stations***

FIRE DEPARTMENT	COUNTY	CAREER FIREFIGHTERS	VOLUNTEERS: PAID- PER-CALL	VOLUNTEERS: NO-PAY- PER-CALL	TOTAL FIREFIGHTERS	FUNDING	NUMBER OF STATIONS IN JURISDICTION
Bellevue FD	Blaine	0	11	0	11	Tax Base	1
Carey Rural Fire Protection Dist	Blaine	0	26	0	26	Tax Base	3
Hailey FD	Blaine	4	20	0	24	Tax Base	1
Ketchum FD	Blaine	9	37	0	46	Tax Base	3
Smiley Creek Fire Dist	Blaine	0	0	0	0	Subscription Dues	0
Sun Valley FD	Blaine	3	24	0	27	Tax Base	2
Wood River Fire & Rescue	Blaine	11	42	0	53	Tax Base	3
County Totals		27	160	0	187		13
Centerville Volunteer FD	Boise	0	0	12	12	Subscription Dues	1
Clear Creek Volunteer FD	Boise	0	17	0	17	Donations	1
Garden Valley Fire Protection Dist	Boise	1	15	0	16	Tax Base	2
Grandjean Volunteer FD	Boise	0	0	0	0	Donations	1
Horseshoe Bend Fire Dist	Boise	0	18	0	18	Tax Base	1
Idaho City Volunteer FD	Boise	0	0	20	20	Donations	1
Lowman Volunteer Fire Dist, Inc.	Boise	0	12	0	12	Subscription Dues	3
Placerville Fire Protection Dist	Boise	0	0	22	22	Tax Base	1
Robie Creek Volunteer FD	Boise	0	0	0	0	Subscription Dues	2
Valley of the Pines Thorn Creek Volunteer FD	Boise	0	0	15	15	Subscription Dues	1
Wilderness Ranch Fire Protection Dist	Boise	0	1	31	32	Tax Base	1
County Totals		1	162	0	164		15
Clark Fork Valley Fire & Rescue	Bonner	0	11	0	11	Tax Base	1
Coolin-Cavanaugh Bay Fire Protection Dist	Bonner	3	27	0	30	Tax Base	1
Hope-East Hope Volunteer FD	Bonner	0	10	0	10	Tax Base	1
North of the Narrows Fire Dist	Bonner	1	0	30	31	Tax Base	1
Northside Fire Dist	Bonner	2	0	24	26	Tax Base	4
Priest Lake Fire Protection Dist, IDL	Bonner	18	0	0	18	Government	1
Sagle Fire Dist	Bonner	9	33	0	42	Tax Base	5
Sam Owen Fire Dist	Bonner	0	18	0	18	Tax Base	1
Sandpoint FD	Bonner	10	24	0	34	Tax Base	1
Schweitzer Fire Dist	Bonner	2	4	6	12	Tax Base	1
West Pend Oreille Fire Dist	Bonner	0	0	40	40	Tax Base	3
West Priest Lake Fire Dist	Bonner	0	0	25	25	Tax Base	2
Westside Fire Protection Dist	Bonner	4	15	0	19	Tax Base	3
County Totals		49	124	143	316		25
Ammon FD	Bonneville	3	37	0	40	Tax Base	1
Greater Swan Valley FPD #2	Bonneville	1	0	0	1	Tax Base	2
Idaho Falls FD	Bonneville	99	0	0	99	Tax Base	5
INL FD	Bonneville	93	0	0	93	Federal	3
Ucon FD	Bonneville	0	0	0	0	Tax Base	1
County Totals		196	37	0	233		12

**Fire Department Information by County
Personnel, Funding and Number of Stations***

FIRE DEPARTMENT	COUNTY	CAREER FIREFIGHTERS	VOLUNTEERS: PAID- PER-CALL	VOLUNTEERS: NO-PAY- PER-CALL	TOTAL FIREFIGHTERS	FUNDING	NUMBER OF STATIONS IN JURISDICTION
Bombers Ferry FD	Boundary	1	20	0	21	Tax Base	2
Curley Creek Volunteer FD	Boundary	0	12	0	12	Subscription Dues	2
Hall Mountain Volunteer Fire Assn, Inc.	Boundary	0	0	27	27	Subscription Dues	4
Moyie Springs FD	Boundary	0	10	0	10	Tax Base	1
North Bench FD	Boundary	0	0	16	16	Subscription Dues	3
Paradise Valley Fire Dist	Boundary	0	0	12	3	Tax Base	2
South Boundary Fire Protection Dist	Boundary	1	19	2	22	Tax Base	3
County Totals		2	61	57	111		17
Arco FD	Butte	0	0	15	15	Tax Base	1
Lost River Fire Protection Dist	Butte	0	0	9	9	Tax Base	1
County Totals		0	0	24	24		2
Fairfield FD	Camas	0	0	15	15	Tax Base	1
West Magic Fire Dist	Camas	0	0	10	10	Tax Base	2
County Totals		0	0	25	25		3
Caldwell FD	Canyon	44	25	0	69	Tax Base	3
Caldwell Rural Fire Protection Dist	Canyon	43	25	0	68	Tax Base	1
Melba Rural Fire Protection Dist	Canyon	0	0	25	25	Tax Base	1
Middleton Rural Fire Protection Dist	Canyon	10	42	6	58	Tax Base	2
Nampa FD	Canyon	89	0	0	89	Tax Base	5
Parma Rural Fire Protection Dist	Canyon	3	0	30	33	Tax Base	2
Upper Deer Flat FD	Canyon	0	0	17	17	Tax Base	1
Wildier Rural Fire Protection Dist	Canyon	0	8	12	20	Tax Base	1
County Totals		189	100	90	379		16
Bancroft FD	Caribou	0	14	0	14	Tax Base	1
Caribou County FD	Caribou	0	0	0	0	Tax Base	2
Grace FD	Caribou	0	0	13	13	Tax Base	1
Soda Springs FD	Caribou	0	14	0	14	Tax Base	1
County Totals		0	28	13	41		5
Ace Fire Protection Assn Unit	Cassia	0	0	12	12	Tax Base	1
Albion Fire Protection Dist	Cassia	0	0	10	10	Tax Base	1
Burley FD/N Cassia Fire Dist	Cassia	10	20	0	30	Tax Base	1
Declo FD	Cassia	0	0	0	0	Tax Base	1
Oakley FD	Cassia	0	16	0	16	Tax Base	1
Raft River Fire Protection Dist	Cassia	0	0	0	0	Tax Base	0
County Totals		10	36	22	68		5
Dubois City FD	Clark	0	0	0	0	Tax Base	1
County Totals		0	0	0	0		1



**Fire Department Information by County
Personnel, Funding and Number of Stations***

FIRE DEPARTMENT	COUNTY	CAREER FIREFIGHTERS	VOLUNTEERS: PAID- PER-CALL	VOLUNTEERS: NO-PAY- PER-CALL	TOTAL FIREFIGHTERS	FUNDING	NUMBER OF STATIONS IN JURISDICTION
Clearwater Potlatch Timber Protective Assn	Clearwater	17	0	0	17	Tax Base	4
Elk River Volunteer FD	Clearwater	0	0	0	0	Donations	1
Evergreen Rural Fire Dist	Clearwater	0	0	23	23	Tax Base	1
Grangemont FD	Clearwater	0	0	0	0	Tax Base	1
Greer Rural Fire Dist	Clearwater	0	0	0	0	Tax Base	1
Orofino FD	Clearwater	0	0	0	0	Tax Base	2
Pierce Volunteer FD	Clearwater	0	0	0	0	Tax Base	1
Sunnyside Rural Fire Dist	Clearwater	0	0	22	22	Tax Base	1
Twin Ridge Rural FD	Clearwater	0	0	18	18	Tax Base	1
Upper Fords Creek Rural FD	Clearwater	0	0	0	0	Tax Base	1
Weippe FD	Clearwater	0	0	0	0	Tax Base	1
County Totals		17	0	63	80		15

North Custer Rural Fire Dist	Custer	0	1	57	58	Tax Base	4
Sawtooth Valley Rural Fire Dist	Custer	0	0	19	19	Tax Base	1
South Custer Rural Fire Protection Dist	Custer	0	0	0	0	Tax Base	0
County Totals		0	1	76	77		5

Atlanta Rural FD	Elmore	1	0	8	9	Tax Base	1
Glenns Ferry/King Hill FD	Elmore	1	21	0	22	Tax Base	2
Mountain Home Rural Fire Protection Dist	Elmore	2	31	0	33	Tax Base	1
Mountain Home Volunteer FD	Elmore	2	31	0	33	Tax Base	3
Oasis Volunteer FD	Elmore	0	0	19	19	Tax Base	0
County Totals		6	83	27	116		7

Franklin County Fire Dist	Franklin	1	30	0	31	Tax Base	2
County Totals					31		2

Island Park Fire Protection Dist	Fremont	0	20	0	20	Tax Base	4
North Fremont Fire Dist, Inc.	Fremont	0	20	0	20	Tax Base	1
South Fremont Fire Dist	Fremont	0	0	20	20	Tax Base	1
County Totals		0	40	20	60		6

Emmett FD	Gem	1	17	0	18	Tax Base	1
Gem County Fire Protection Dist #1	Gem	1	30	0	31	Tax Base	3
Gem County Fire Protection Dist #2	Gem	0	0	35	35	Tax Base	2
County Totals		2	47	35	84		6

Bliss Fire Dist	Gooding	0	0	12	12	Tax Base	1
Gooding City/Rural FD	Gooding	1	25	0	26	Tax Base	1
Hagerman Fire Protection Dist	Gooding	1	20	0	21	Tax Base	1
Wendell City FD	Gooding	2	0	18	20	Tax Base	1
Wendell Rural Fire Dist	Gooding	2	0	28	30	Tax Base	1
County Totals		6	45	58	109		5

**Fire Department Information by County
Personnel, Funding and Number of Stations***

FIRE DEPARTMENT	COUNTY	CAREER FIREFIGHTERS	VOLUNTEERS: PAID- PER-CALL	VOLUNTEERS: NO-PAY- PER-CALL	TOTAL FIREFIGHTERS	FUNDING	NUMBER OF STATIONS IN JURISDICTION
BPC Volunteer Rural FD, Inc.	Idaho	0	0	17	15	Grants	1
Carrot Ridge Volunteer Fire Dist	Idaho	0	0	50	50	Subscription Dues	2
Cottonwood Rural Fire Dist	Idaho	0	0	22	22	Tax Base	1
Cottonwood Volunteer FD	Idaho	0	0	22	22	Tax Base	1
Elk City Volunteer FD	Idaho	0	0	6	6	Donations	1
Ferdinand FD	Idaho	0	0	12	12	Grants	1
Glenwood/Caribel Volunteer Fire Dist	Idaho	0	0	26	26	Subscription Dues	1
Grangeville Rural FD	Idaho	0	0	0	0	Tax Base	1
Harpster Fire Protection Dist	Idaho	0	0	22	22	Tax Base	1
Kooskia FD	Idaho	0	0	16	16	Tax Base	1
Ridge Runner FD	Idaho	0	0	20	20	Grants	1
Riggins City FD	Idaho	0	0	16	16	Tax Base	1
Salmon River Rural FD	Idaho	0	0	41	41	Subscription Dues	6
Secesh Meadow Rural Fire Dist	Idaho	0	0	10	10	Donations	0
Stites FD	Idaho	0	0	12	12	Tax Base	1
White Bird City/Rural FD	Idaho	0	0	18	18	Tax Base	1
County Totals		0	0	310	308		21
Central Fire Dist	Jefferson	2	74	0	76	Tax Base	4
Hamer Fire Protection Dist	Jefferson	0	0	0	0	Tax Base	1
Roberts FD	Jefferson	0	0	0	0	Tax Base	1
West Jefferson Fire Control Dist	Jefferson	0	20	0	20	Tax Base	2
County Totals		2	94	0	96		8
First Segregation Fire Dist	Jerome	0	12	0	12	Tax Base	2
Jerome City FD	Jerome	17	14	0	31	Tax Base	2
Jerome Rural Fire Dist #1	Jerome	0	18	0	18	Tax Base	2
County Totals		17	44	0	61		6
Coeur d'Alene FD	Kootenai	57	0	0	57	Tax Base	3
East Side Fire Protection Dist	Kootenai	0	0	36	36	Tax Base	3
Hauser Lake Fire Protection Dist	Kootenai	1	0	18	19	Tax Base	1
Kootenai County Fire & Rescue	Kootenai	50	0	44	94	Tax Base	7
Mica-Kidd Island Fire Protection Dist	Kootenai	2	0	27	29	Tax Base	1
Northern Lakes Fire Protection Dist	Kootenai	38	15	9	62	Tax Base	7
Region 1 HazMat Team	Kootenai	0	0	0	0		0
Spirit Lake Fire Protection Dist	Kootenai	8	0	22	30	Tax Base	3
Timberlake Fire Protection Dist	Kootenai	6	0	18	24	Tax Base	6
Worley Fire Protection Dist	Kootenai	3	3	19	25	Tax Base	5
County Totals		165	18	193	376		36



**Fire Department Information by County
Personnel, Funding and Number of Stations***

FIRE DEPARTMENT	COUNTY	CAREER FIREFIGHTERS	VOLUNTEERS: PAID- PER-CALL	VOLUNTEERS: NO-PAY- PER-CALL	TOTAL FIREFIGHTERS	FUNDING	NUMBER OF STATIONS IN JURISDICTION
Bovill Fire Protection Dist	Latah	0	0	17	17	Tax Base	1
Deary Rural Fire Dist	Latah	0	0	20	20	Tax Base	2
Genesee FD	Latah	0	0	0	0	Tax Base	1
Juliaetta Volunteer FD	Latah	0	0	8	8	Tax Base	1
Kendrick Volunteer FD	Latah	0	0	0	0	Tax Base	1
Moscow Volunteer FD	Latah	4	0	100	104	Tax Base	3
Moscow Rural Fire Protection Dist	Latah	0	0	0	0		0
Potlatch Rural Fire Protection Dist	Latah	0	0	0	0	Tax Base	1
Troy Volunteer FD	Latah	0	0	44	44	Tax Base	1
County Totals		4	0	189	193		12
Elk Bend Fire Protection Dist	Lemhi	0	0	26	26	Tax Base	3
Leadore Volunteer FD	Lemhi	0	0	24	24	Donations	2
Lemhi County Fire Protection Dist #1	Lemhi	1	30	0	31	Tax Base	4
North Fork Fire Dist	Lemhi	0	0	0	0	Tax Base	0
Williams Lake Volunteer FD	Lemhi	0	0	3	3	Donations	0
County Totals		1	30	53	84		10
Craigmont FD	Lewis	0	16	0	16	Tax Base	1
Kamiah Volunteer FD	Lewis	0	0	30	30	Tax Base	1
Nez Perce City/Rural FD	Lewis	0	0	0	0	Tax Base	1
Reubens FD	Lewis	0	0	0	0	Tax Base	1
Winchester Volunteer FD	Lewis	0	0	14	14	Grants	1
County Totals		0	16	44	60		5
Dietrich Fire Dist	Lincoln	0	0	12	12	Tax Base	1
Richfield Fire Protection Dist	Lincoln	0	0	10	10	Tax Base	1
Shoshone City/Rural Fire Dist	Lincoln	0	14	0	14	Tax Base	2
County Totals		0	14	22	36		4
Rexburg/Madison County Emergency Svcs	Madison	16	55	0	71	Tax Base	3
County Totals		16	55	0	71		3
Minidoka County Fire Protection Dist	Minidoka	1	50	0	51	Tax Base	3
Rupert City Fire & Rescue	Minidoka	1	23	0	24	Tax Base	1
West End Fire Protection Dist	Minidoka	1	18	3	22	Tax Base	1
County Totals		3	91	3	97		5
Big Canyon Fire Dist	Nez Perce	0	0	20	20	Tax Base	1
Clearwater Fire Svcs	Nez Perce	0	0	9	9	Subscription Dues	1
Culdesac Volunteer FD	Nez Perce	0	0	12	12	Tax Base	4
Lapwai FD	Nez Perce	0	0	0	0	Tax Base	1
Lewiston FD	Nez Perce	46	0	0	46	Tax Base	3
Nez Perce County FD	Nez Perce	1	0	22	23	Tax Base	2
Wheatland FPD	Nez Perce	0	0	25	25	Tax Base	1
County Totals		47	0	88	135		13

**Fire Department Information by County
Personnel, Funding and Number of Stations***

FIRE DEPARTMENT	COUNTY	CAREER FIREFIGHTERS	VOLUNTEERS: PAID- PER-CALL	VOLUNTEERS: NO-PAY- PER-CALL	TOTAL FIREFIGHTERS	FUNDING	NUMBER OF STATIONS IN JURISDICTION
Oneida County Fire Dist/Malad FD	Oneida	0	0	16	16	Tax Base	2
County Totals		0	0	16	16		2
Bruneau Fire Protection Dist	Owyhee	0	0	7	7	Tax Base	1
Grand View Rural Fire Protection Dist	Owyhee	0	0	15	15	Tax Base	2
Homedale Rural Fire Protection Dist	Owyhee	0	0	22	22	Tax Base	1
Marsing City/Rural Fire Protection Dist	Owyhee	0	0	32	32	Tax Base	1
Murphy-Reynolds-Wilson Fire Protection Dist	Owyhee	0	0	28	28	Tax Base	4
Silver City Fire & Rescue, Inc.	Owyhee	0	0	10	10	Donations	1
County Totals		0	0	114	38		10
Fruitland FD	Payette	0	25	0	25	Tax Base	1
New Plymouth Rural Fire Dist	Payette	0	0	0	0	Tax Base	1
Payette City & Rural FD	Payette	3	25	0	28	Tax Base	1
County Totals		3	50	0	53		3
American Falls Rural Fire Protection Dist	Power	0	18	26	44	Tax Base	1
Rockland Rural Fire Dist	Power	0	0	21	21	Tax Base	1
County Totals		0	18	47	65		2
Cataldo Fire Protection Dist	Shoshone	2	8	0	10	State Funding	1
Mullan Volunteer FD	Shoshone	0	0	25	25	Tax Base	1
Prichard/Murray Volunteer FD, Inc.	Shoshone	0	0	16	16	Fundraisers	2
Shoshone County Fire Protection Dist #1	Shoshone	4	28	0	32	Tax Base	2
Shoshone County Fire Protection Dist #2	Shoshone	8	0	32	40	Tax Base	4
Shoshone County Fire Protection Dist #3	Shoshone	0	25	0	25	Tax Base	1
St. Joe Valley Fire Dist	Shoshone	0	0	0	0	Tax Base	0
County Totals		14	61	73	148		11
Teton County Fire Protection Dist	Teton	18	15	0	33	Tax Base	3
County Totals		18	15	0	33		3
Buhl FD	Twin Falls	4	24	0	28	Tax Base	2
Castleford Fire Dist	Twin Falls	0	0	0	0	Tax Base	0
Filer FD	Twin Falls	0	0	0	0	Tax Base	1
Hansen City FD	Twin Falls	0	0	0	0	Tax Base	0
Rock Creek Rural Fire Protection Dist	Twin Falls	1	11	0	12	Tax Base	4
Salmon Tract Rural Fire Protection Dist	Twin Falls	0	0	0	0	Tax Base	0
Twin Falls FD	Twin Falls	39	0	0	39	Tax Base	3
County Totals		44	35	0	79		10

Fire Department Information by County Personnel, Funding and Number of Stations*

FIRE DEPARTMENT	COUNTY	CAREER FIREFIGHTERS	VOLUNTEERS: PAID- PER-CALL	VOLUNTEERS: NO-PAY- PER-CALL	TOTAL FIREFIGHTERS	FUNDING	NUMBER OF STATIONS IN JURISDICTION
Cascade Rural Fire Protection Dist	Valley	1	32	0	33	Tax Base	4
Donnelly Rural Fire Protection Dist	Valley	9	20	0	29	Tax Base	2
High Valley Fire Protection Assn	Valley	0	0	0	0	Tax Base	0
McCall Fire Protection Dist	Valley	12	35	0	47	Tax Base	2
Southern Idaho Timber Protective Assn	Valley	25	0	0	25	Tax Base	0
Yellow Pine Fire Dist	Valley	0	0	10	10	Tax Base	1
County Totals		47	87	10	144		9
Cambridge Fire Protection Dist	Washington	0	0	14	14	Tax Base	1
Midvale Fire Protection Dist	Washington	0	0	20	20	Tax Base	2
Weiser City Fire & Rescue	Washington	1	34	0	35	Tax Base	1
Weiser Rural FD	Washington	0	28	0	28	Tax Base	2
County Totals		1	62	34	97		6
State Totals		1441	1739	2269	5393		426

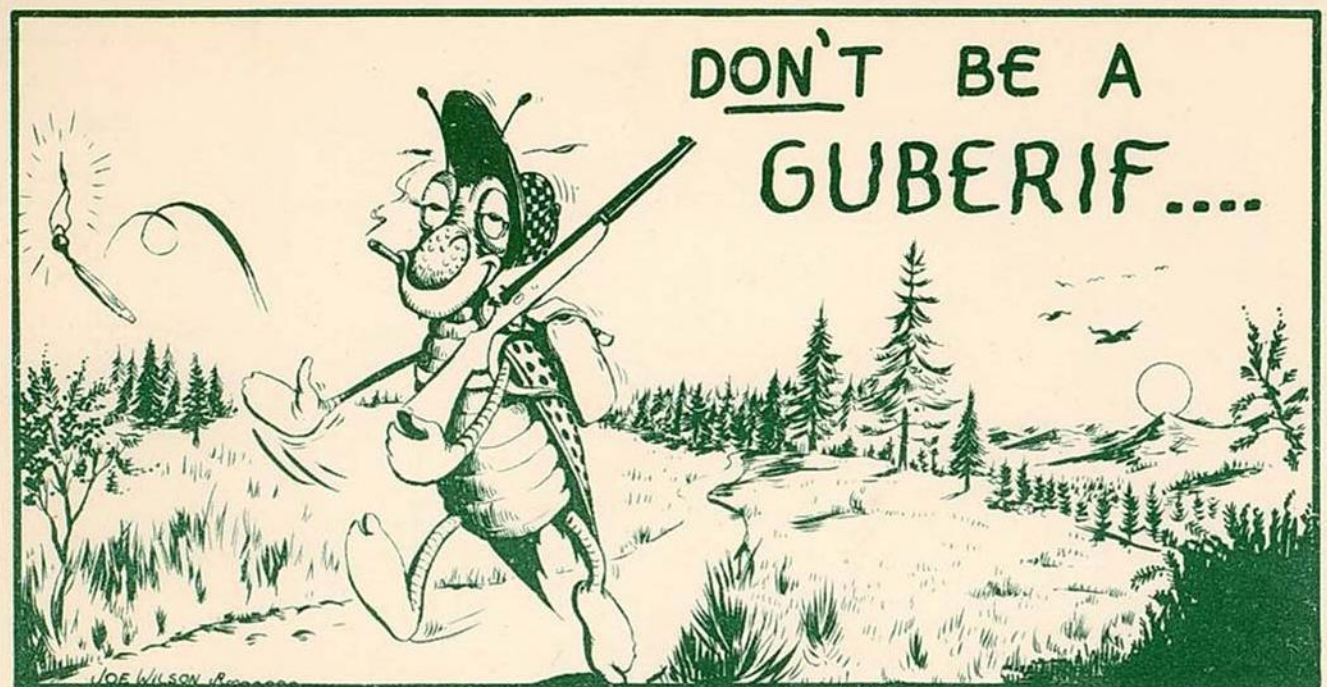
*The information in this document was compiled from surveys submitted by the fire agencies and other sources.



Meridian Fire Department Pipes and Drums - Ada County
Photo provided by Meridian Fire Department



Freezeout Hill Fire
Photo provided by Gem County Fire District #1



"HELP PREVENT FOREST
AND RANGE FIRES!"

KEEP IDAHO GREEN

2011 Wildland Fires

The following sections of this annual report show excerpts from information compiled by:

- The National Interagency Fire Center
- The Idaho Department of Lands
- Idaho Firewise

This combined information demonstrates the significant impact of wildland fires and the efforts to prevent them across the great state of Idaho. References showing how to access the complete reports from these agencies can be found on page 70. Wildland fire photo provided by Chubbuck Fire Department.

Statistics from Idaho Department of Lands Year-End Fire Report For Calendar Year (CY) 2011

LIGHTNING VS HUMAN FIRES						
Year	# of Lightning Fires	Lightning Acres Burned	# of Human Fires	Human Acres Burned	Total # of Fires	Total Acres Burned
2011	113	289	136	727	249	1,016
2010	86	1,729	97	1,736	183	3,465
2009	233	274	119	182	352	457
2008	101	4,028	146	800	247	4,828
29-YR AVE.	204	7,364	172	2,671	376	10,036

Minor discrepancies exist due to rounding

FIRES IN THE WILDLAND URBAN INTERFACE

The wildland urban interface (WUI) consists of areas where human habitation adjoins, or is mixed with, the wildland and wildland fuels. The character of the WUI ranges from urban areas adjoining wildlands to isolated ranches or cabins. Using county WUI designations, approximately 78 percent of the lands IDL protects from wildfire falls within the WUI.

When a fire occurs within the WUI, the job of firefighting becomes more complex and the cost per acre is generally higher. Since 1993, the number of structures in the WUI has nearly doubled. As the number of structures in the WUI continues to increase, concerns over public safety and the protection of improvements also increases.

NUMBER OF WUI FIRES BY CAUSE WITH COSTS					
General Cause	# of Fires	% of Fires	Total Cost	% of Cost	Cost / Fire
Human-Caused					
Miscellaneous	25	26%	\$79,009	25%	\$3,160
Debris Burning	25	26%	\$59,042	18%	\$2,362
Campfire	23	23%	\$30,431	10%	\$1,323
Equipment Use	10	10%	\$16,672	5%	\$1,667
Smoking	6	6%	\$1,967	1%	\$328
Arson	5	5%	\$9,334	3%	\$1,867
Children	3	3%	\$123,799	39%	\$41,266
Railroad	1	1%	\$55	0%	\$55
Total Human	98	100%	\$320,308	100%	\$3,268
Human and Lightning					
Lightning	37	27%	\$279,988	47%	\$7,567
Total Human	98	73%	\$320,308	53%	\$3,268
Grand Total	135	100%	\$600,295	100%	\$4,447

Minor discrepancies exist due to rounding

WUI ACRES BURNED BY CAUSE WITH COSTS					
General Cause	Acres Burned	% of Acreage	Total Cost	% of Cost	Cost / Acre
Human-Caused					
Equipment Use	71	37%	\$16,672	5%	\$235
Miscellaneous	61	31.9%	\$79,009	25%	\$1,292
Debris Burning	31	16%	\$59,042	18.4%	\$1,906
Children	18	9.2%	\$123,799	39%	\$7,034
Arson	6	3%	\$9,334	0.0	\$1,445
Campfire	4	2%	\$30,431	10%	\$8,115
Smoking	0.5	0.3%	\$1,967	1%	\$3,856
Railroad	0.1	0.1%	\$55	0%	\$549
Total Human	192	100%	\$320,308	100%	\$1,672
Human and Lightning					
Lightning	42	18%	\$279,988	47%	\$6,693
Total Human	192	82%	\$320,308	53%	\$1,672
Grand Total	233	100%	\$600,295	100%	\$2,572

Minor discrepancies exist due to rounding

TEN LARGEST FIRES IN 2011			
Fire Name	District	Size	Cost
Red Bird	Craig Mountain FPD	127	\$28,594
American Bar	Craig Mountain FPD	120	\$38,661
Birch Creek	Craig Mountain FPD	102	\$95,880
Timber Butte	Southwest Idaho FPD	101	\$65,045
Culdesac	Craig Mountain FPD	84	\$237,450
Big Horse Canyon	Maggie Creek FPD	82	\$88,036
MM 67	Southwest Idaho FPD	67	\$23,714
Cummins	Craig Mountain FPD	56	\$5,104
Airport Road	Craig Mountain FPD	36	\$671
Kendrick Grade	Ponderosa FPD	25	\$1,034
Total		799	\$584,188

2011 MULTIPLE FIRES, BY DISTRICT			
District	Total # Multi Fires	# of Days with Multi Fires	Most Fires in 1 Day
CPTPA	23	3	18
SITPA	15	4	6
Pend Oreille FPD	10	5	2
Southwest Idaho FPD	10	4	3
Ponderosa FPD	8	3	3
West St. Joe FPD	5	2	3
Craig Mountain FPD	5	2	3
Maggie Creek FPD	4	2	2
Priest Lake FPD	2	1	2
Kootenai Valley FPD	2	1	2
Mica FPD	2	1	2
Cataldo FPD	0	0	0
Total	86	28	

TEN MOST EXPENSIVE FIRES IN 2011			
Fire Name	District	Size	Total Cost
Culdesac	Craig Mountain FPD	84	\$237,450
Lookout Mtn.	Priest Lake FPD	15	\$150,568
Silver Peak	Cataldo FPD	17	\$121,986
Birch Creek	Craig Mountain FPD	102	\$95,880
Big Horse Canyon	Maggie Creek FPD	82	\$88,036
Timber Butte	Southwest Idaho FPD	101	\$65,045
Henry Creek	Southwest Idaho FPD	16	\$52,420
Last Chance	SITPA	2	\$46,469
American Bar	Craig Mountain FPD	120	\$38,661
Round Mt.	Kootenai Valley FPD	5	\$37,110
Total		544	\$933,625

Number of Fires, by Cause, by District

District	# of Fires	Lightning	Misc.	Debris	Campfire	Equip. Use	Arson	Smoking	Children	Railroad
CPTPA	42	29	1	4	2	5	-	-	1	-
SITPA	37	22	7	2	6	-	-	-	-	-
Pend Oreille FPD	32	8	9	9	4	2	-	-	-	-
Southwest Idaho FPD	22	13	-	2	3	1	1	2	-	-
West St. Joe FPD	17	7	1	1	4	1	3	-	-	-
Ponderosa FPD	17	12	2	3	-	-	-	-	-	-
Kootenai Valley FPD	16	2	4	3	3	2	1	-	-	1
Mica FPD	16	2	1	6	2	2	-	2	1	-
Craig Mountain FPD	15	6	2	1	1	3	1	1	-	-
Maggie Creek FPD	13	6	4	1	-	-	1	-	1	-
Priest Lake FPD	12	6	2	-	2	-	1	1	-	-
Cataldo FPD	10	-	1	1	5	1	-	1	1	-
Total	249	113	34	33	32	17	8	7	4	1

The fire season begins in late spring so does not coincide with the fiscal year. As a result, figures on this page may not agree with fiscal-year statistics elsewhere in this report.



The LAND Where MIRACLES Grow 29

Human activity started the largest number of fires, but lightning fires cost the most. The average cost per fire was \$7,099, with average lightning fire expenses being \$8,148, and human-caused fires costing an average \$6,226.

NUMBER OF FIRES, BY CAUSE, WITH COSTS					
General Cause	# of Fires	% of Fires	Cost	% of Cost	Cost / Fire
Human-Caused					
Miscellaneous	34	25%	\$225,905	26.7%	\$6,644
Debris Burning	33	24%	\$121,819	14.4%	\$3,691
Campfire	32	24%	\$54,094	6.4%	\$1,690
Equipment Use	17	13%	\$42,941	5.1%	\$2,526
Arson	8	6%	\$36,047	4.3%	\$4,506
Smoking	7	5%	\$239,417	28.3%	\$34,202
Children	4	3%	\$126,486	14.9%	\$31,621
Railroad	1	1%	\$55	0.0%	\$55
Total Human	136	100%	\$846,763	100%	\$6,226
Human and Lightning					
Lightning	113	45%	\$920,778	52%	\$8,148
Human	136	55%	\$846,763	48%	\$6,226
Grand Total	249	100%	\$1,767,541	100%	\$7,099

Minor discrepancies exist due to rounding

ACRES BURNED BY CAUSE, WITH COSTS						
General Cause	Acres Burned	% of Acreage	Cost	Cost / Acre	Bill Amount	Amount Collected
Human-Caused						
Miscellaneous	276	38%	\$225,905	\$820	\$0	\$0
Debris Burning	158	22%	\$121,819	\$772	\$11,935	\$2,390
Arson	109	15%	\$36,047	\$331	\$0	\$0
Smoking	85	12%	\$239,417	\$2,833	\$0	\$0
Equipment Use	72	10%	\$42,941	\$594	\$0	\$0
Children	18	3%	\$126,486	\$6,856	\$0	\$0
Campfire	9	1%	\$54,094	\$5,829	\$0	\$0
Railroad	0.1	0%	\$55	\$0	\$0	\$0
Total Human	727	100%	\$846,763	\$1,165	\$11,935	\$2,390
Human and Lightning						
Lightning	289	28%	\$920,778	\$3,188	\$0	\$0
Human	727	72%	\$846,763	\$1,165	\$11,935	\$2,390
Grand Total	1,016	100%	\$1,767,541	\$1,740	\$11,935	\$2,390
Collections from prior years negligent fires						\$86,322
Total CY Collections						\$88,712

Minor discrepancies exist due to rounding



2011 AVIATION SUMMARY									
Aircraft	Total Flight Hours	IDL Flight Hours	Reimbursable Flight Hours	% Reimbursable Flight Hours	Availability	Operating	Total	Reimbursable	IDL Obligation
CDA Helo	105	69	36	34%	\$581,153	\$244,857	\$826,011	\$114,526	\$711,485
Craigmont Helo	67	49	19	28%	\$150,493	\$77,056	\$227,549	\$26,560	\$200,989
Helicopter Total	172	118	54	32%	\$731,646	\$321,913	\$1,053,559	\$141,086	\$912,474
SEATs *	395	60	334	85%	\$612,642	\$1,079,514	\$1,692,156	\$1,007,061	\$685,095
AVIATION TOTAL	567	178	389	69%	\$1,344,288	\$1,401,427	\$2,745,715	\$1,148,147	\$1,597,568

* Total of 3 that were stationed at various locations and times across the state

** Minor discrepancies exist due to rounding

DISTRICT ACRES BURNED, BY CAUSE										
District	Total Acres	Lightning	Misc	Debris Burning	Arson	Smoking	Equip Use	Children	Camp Fire	Rail road
Craig Mountain FPD	530	103	131	120	36	84	56		0.1	
Southwest Idaho FPD	194	120		7	67	0.11	0.1		0.4	
Maggie Creek FPD	107	13	84	6	4			0.2		
Ponderosa FPD	44	4	25	14						
Pend Oreille FPD	29	8	18	2			0.2		0.7	
Cataldo FPD	25		7	0.1		0.1	0.1	17	0.9	
Mica FPD	23	0	6	6		0.2	10	0.1	0.7	
CPTPA	22	10	0.1	0.6			5	0.9	5.1	
Priest Lake FPD	19	18	0.4		0.1	0.1			0.2	
Kootenai Valley FPD	12	5	1.2	1.9	2		0.8		0.3	0.1
SITPA	9	6	1.8	0.2					0.7	
West St. Joe FPD	4	2	1	0.3	0.4		0.1		0.2	
Total	1,016	289	276	158	109	85	72	18	9	0

Minor discrepancies exist due to rounding

SUPPRESSION COST PER FIRE			
District	# of Fires	Suppression Cost	District Cost/Fire
Craig Mountain FPD	15	\$426,738	\$28,449
Priest Lake FPD	12	\$209,314	\$17,443
Cataldo FPD	10	\$132,432	\$13,243
Southwest Idaho FPD	22	\$222,412	\$10,110
Maggie Creek FPD	13	\$112,994	\$8,692
Kootenai Valley FPD	16	\$86,006	\$5,375
Ponderosa FPD	17	\$90,726	\$5,337
Pend Oreille FPD	32	\$137,642	\$4,301
SITPA	37	\$126,446	\$3,417
CPTPA	42	\$142,944	\$3,403
West St. Joe FPD	17	\$47,738	\$2,808
Mica FPD	16	\$32,150	\$2,009
Total	249	\$1,767,541	\$7,099

Minor discrepancies exist due to rounding

SUPPRESSION COST PER ACRE BURNED			
District	# of Acres	Suppression Cost	District Cost/Acre
SITPA	9	\$126,446	\$14,876
Priest Lake FPD	19	\$209,314	\$11,253
West St. Joe FPD	4	\$47,738	\$11,000
Kootenai Valley FPD	12	\$86,006	\$7,382
CPTPA	22	\$142,944	\$6,568
Cataldo FPD	25	\$132,432	\$5,210
Pend Oreille FPD	29	\$137,642	\$4,830
Ponderosa FPD	44	\$90,726	\$2,081
Mica FPD	23	\$32,150	\$1,410
Southwest Idaho FPD	194	\$222,412	\$1,145
Maggie Creek FPD	107	\$112,994	\$1,057
Craig Mountain FPD	530	\$426,738	\$806
Total	1,016	\$1,767,541	\$1,740

Minor discrepancies exist due to rounding

NUMBER OF AIRCRAFT USED ON FIRES		
District	Air Tankers	Helicopters
Priest Lake FPD	1	3
Kootenai Valley FPD		2
Mica FPD		
Pend Oreille FPD		5
Cataldo FPD	1	1
West St. Joe FPD		2
Ponderosa FPD		4
Maggie Creek FPD	1	2
Craig Mountain FPD	3	5
Southwest Idaho FPD		7
SITPA	2	9
CPTPA		9
Total	8	49

The above matrix illustrates the number of aircraft used on fires in the FPD.

It does not reflect the amount of use per fire.



**Statistics from National Interagency Fire Center
1999-2011 (100,000+ acre fires)**

Year	Fire Name	Location	Size in Acres
2007	Murphy Complex	BLM Twin Falls District	652,016
2010	Long Butte	BLM Twin Falls District	306,113
2007	Cascade Complex	Boise National Forest	302,376
2007	East Zone Complex	Payette National Forest	300,022
2006	Crystal	BLM Idaho Falls District	220,042
2000	Clear Creek	Salmon-Challis National Forest	216,961
2000	SCF Wilderness	Salmon-Challis National Forest	182,600
2007	Rowland	Idaho	180,000
2007	Elk Mountain	BLM Twin Falls District	160,000
2000	Diamond	Payette National Forest	149,772
1999	Mule Butte	BLM Aberdeen	138,915
2007	Shower Bath	Salmon-Challis National Forest	122,600
2010	Jefferson	DOE National Laboratory	109,727
2007	Rattlesnake	Idaho	102,000

National Report of Wildland Fires and Acres in Idaho in 2011

Fires from the Fire and Aviation Management Web Applications Program

	Wildland # Fires	# Acres	Prescribed Burns	# Acres
IDAHO	1,094	384,103	347	43,333
USA	74,123	8,711,367	8,672	2,112,811

Referenced Website Links

National Interagency Fire center Information – Wildland fire statistics
http://www.nifc.gov/fireInfo/fireInfo_statistics.html

Idaho Firewise
<http://www.idahofirewise.org/>

Idaho Department of Lands 2011 Annual Report
http://www.idl.idaho.gov/news/annual_reports/index_ar.htm

Idaho Department of Lands 2011 Fire Report
<http://www.idl.idaho.gov/bureau/FireMgt/fire-annual-reports.html>

2011 Population Statistics - Idaho Department of Labor
<http://labor.idaho.gov/dnn/idl/Home/tabid/617/Default.aspx>

Idaho State Fire Marshal
<http://www.doi.idaho.gov/sfm/firemars.aspx>

A very special “thank you” to those who shared their expertise, data and pictures in the making of this report:

Idaho Fire Departments
Office of the State Fire Marshal
Department of Insurance
National Interagency Fire center
Idaho Department of Lands
Idaho Firewise
Idaho Department of Labor

Front cover photo from Burke Canyon Fire, Wallace, Idaho. Photo provided by Nick Corwin, Shoshone County Fire Protection District #1.

Back cover photo from Mtn Home AFB Fire, Mtn Home AFB, Idaho. Photo provided by Phil Gridley, Fire Chief Mtn Home Volunteer Fire Department/Rural Fire Protection District.

Idaho State Fire Marshal
700 West State Street
P. O. Box 83720
Boise, Idaho 83720-0043



Idaho's Fire Departments Responded Every:

5.8 minutes
to an incident



1.5 hours to
an actual fire



9.3 minutes to a
medical call



4.7 hours to a structure fire



1.5 hours to a false alarm



12.2 hours to a vehicle fire



15.8 hours to an intentionally set



