

# **FIRE IN IDAHO 2012**





December 31, 2012, Terry Edwards checked in for the last time as a Deputy State Fire Marshal for Eastern Idaho.

Terry retired from the Idaho Falls Fire Department and started work for the State Fire Marshal on June 10, 1996.

He was an outstanding employee and we wish him the best in his new adventure...retirement.

*State of Idaho*  
**DEPARTMENT OF INSURANCE**

**C.L. "BUTCH" OTTER**  
Governor

700 West State Street, 3rd Floor  
P.O. Box 83720  
Boise, Idaho 83720-0043  
Phone (208)334-4370  
FAX # (208)334-4375

**WILLIAM W. DEAL**  
Director

**MARK LARSON**  
State Fire Marshal

July 1, 2013

Honorable C. L. "Butch" Otter  
Governor, State of Idaho  
Statehouse  
Boise, ID 83720

Dear Governor Otter:

The 2012 edition of the annual report from the State Fire Marshal's Office is based on information submitted by municipal fire departments and fire districts and associations statewide. We have also included statistics from state and federal fire response agencies in this document.

This report shows the reporting fire agencies responded to almost 94,000 calls to serve Idahoans in 2012. Over 7,250 of the responses were to fires or explosions. Ninety-three firefighters were injured in those efforts. Eleven citizens lost their lives in fire incidents.



The year 2012 saw Idaho suffering the impact of several large wildland fires. The catastrophic loss of over 60 structures near Pocatello in a matter of hours demonstrates just how quickly uncontrolled fire can impact our lives.

Diligence in fire safety is of the utmost importance in our businesses, homes, neighborhoods and public buildings. Emergency responders, elected officials and citizens alike must all work together to ensure fire safety in Idaho.

I give my thanks to my staff for their efforts in compiling this report and to all the reporting fire agencies for providing their information.

Respectfully submitted,

A handwritten signature in black ink that reads "Mark Larson". The signature is written in a cursive, flowing style.

Mark Larson  
State Fire Marshal



**Governor  
C.L. "Butch" Otter**

**Department of Insurance  
William W. Deal, Director**

**Idaho State Fire Marshal  
Mark Larson**



### ***Mission Statement***

*The State Fire Marshal's Office participates in and coordinates an integrated statewide system designed to protect human life from fire and explosions through fire prevention and the investigation of fires. The program involves fire prevention activities, arson investigations, and the operation of various statistical systems, including the Idaho Fire Incident Reporting System.*

**Visit the Idaho State Fire Marshal's website at  
<http://www.doi.idaho.gov/sfm/firemars.aspx>**



# Table of Contents

## STATE FIRE MARSHAL DIVISION

<b>Customer Service</b> .....	2
State Fire Marshal Staff/District Map.....	3
Fires Investigated/Inspections and Plan Reviews.....	4
Idaho State Fire Marshal Classes.....	6
Certification and Licensing.....	8

## INCIDENT SUMMARY STATISTICS

### Summary of Statistics

Incident Summary.....	10
Incident Responses by Month, Day and Hour.....	11
Top 10 Incident Types by Incident Categories.....	12
Five-Year Trends.....	14
Fire Calls by Month and Day of Week.....	16
Fires in Idaho.....	17
Comparisons of 2011 and 2012 County Populations and Reported Incidents.....	18

### Structure Fires

Areas of Origin for Residential Structure Fires.....	20
Residential Structure Fire Spread.....	21
Reported Large Dollar Loss Structure Fire Events.....	22
Structure Fires by Property Use.....	23
Smoke Detector Performance.....	28
Automatic Extinguishing Systems.....	29

### Civilian Fire Casualties

Civilian Fire Casualty Statistics.....	30
Civilian Fire Fatalities.....	32

### Fire Service Casualties

Fire Service Injuries.....	34
Fire Service Injuries by Incident Type/Severity of Injuries.....	35

## DEPARTMENT LISTINGS

Importance of Data Quality Control.....	38
Reporting Trends.....	39
Departments NOT Reporting.....	41
Reporting Departments.....	42

<b>Glossary of Terms</b> .....	50
--------------------------------	----

<b>Fire Department Information by County</b> .....	52
--	----

### Wildland Fires

Idaho Department of Lands 2012 Year-End Fire and Annual Reports.....	61
Statistics from National Interagency Fire Center.....	66
National Weather Service (National Oceanic and Atmospheric Administration).....	67
In Memoriam.....	69



# Customer Service

Through our offices in Boise, Coeur d'Alene, Idaho Falls and Moscow, our staff of nine dedicated individuals works with a broad spectrum of customers in both the public and private sectors.

By statute, we are responsible for:

- Adoption of the fire code as a minimum standard for the state
- Prescribing regulations and making rules related to the fire code
- Plan review on all new and remodeled state buildings for compliance with adopted fire codes
- Inspecting/testing new fire sprinkler systems and fire alarm systems in all new and remodeled state buildings
- Collecting information on all fires in Idaho
- Regulating the fire sprinkler industry
- Reviewing all plans for single service fire sprinkler systems installed in Idaho
- Licensing fireworks wholesale and import businesses
- Compliance by cigarette manufacturers with Idaho's law for reduced ignition propensity by ensuring cigarettes sold in Idaho meet the required safety standards
- Training and certification provided to local authorities who apply the provisions of the adopted statewide fire code
- Serving as an avenue for appealing local code application decisions as provided by Idaho law
- Serving as the chief arson investigator for the state of Idaho

We also provide assistance to our customers by:

- Assisting local fire jurisdictions with plan reviews, inspections and code interpretation
- Conducting classes in fire investigation, code application and incident reporting
- Answering questions and providing statistical research for:
  - Architects
  - Engineers
  - Fire code officials
  - Developers
  - Attorneys
  - Elected officials
  - Law enforcement
  - Individual citizens
- Participating in numerous arson task forces throughout the state as well as regional fire chiefs' associations
- Active involvement in the development of national fire and life safety standards
- Serving as an active member of the Idaho Lands Resource Coordinating Council
- Working with the Northwest Insurance Council to establish the Arson Hotline and a reward-for-information program

Contact email address for Idaho State Fire Marshall staff members:

Mark Larson, State Fire Marshal	<a href="mailto:mark.larson@doi.idaho.gov">mark.larson@doi.idaho.gov</a>
Knute Sandahl, Chief Deputy-Prevention	<a href="mailto:knute.sandahl@doi.idaho.gov">knute.sandahl@doi.idaho.gov</a>
Jeff Sands, Chief Deputy-Investigation	<a href="mailto:jeff.sands@doi.idaho.gov">jeff.sands@doi.idaho.gov</a>
Nesha Pabst, Administrative	<a href="mailto:nesha.pabst@doi.idaho.gov">nesha.pabst@doi.idaho.gov</a>
Cheryl Karnowski, IFIRS Program Coordinator	<a href="mailto:cheryl.karnowski@doi.idaho.gov">cheryl.karnowski@doi.idaho.gov</a>
Mark Aamodt, Deputy-District I	<a href="mailto:mark.aamodt@doi.idaho.gov">mark.aamodt@doi.idaho.gov</a>
Don Strong, Deputy-District I	<a href="mailto:don.strong@doi.idaho.gov">don.strong@doi.idaho.gov</a>
Ivan Hibbert, Deputy-District III	<a href="mailto:ivan.hibbert@doi.idaho.gov">ivan.hibbert@doi.idaho.gov</a>
Verl Jarvie, Deputy-District III	<a href="mailto:verl.jarvie@doi.idaho.gov">verl.jarvie@doi.idaho.gov</a>





# Idaho State Fire Marshal Staff

Mark Larson, State Fire Marshal (cell 208-867-3720)  
Nesha Pabst, Administrative Assistant  
Cheryl Karnowski, IFIRS Program Coordinator (cell 208-867-5186)  
700 West State Street, 3<sup>rd</sup> Floor  
Boise, ID 83720-0043  
208-334-4370

## Fire Origin and Cause Investigation

### District I

Mark Aamodt  
Deputy Fire Marshal  
2005 Ironwood Parkway #143  
Coeur d'Alene, ID 83814  
208-769-1447 (cell 208-699-3577)

### District II

Jeff Sands  
Chief Deputy Fire Marshal  
700 West State Street, 3<sup>rd</sup> Floor  
Boise, ID 83720-0043  
208-334-4370 (cell 208-867-3395)

### District III

Ivan Hibbert  
Deputy Fire Marshal  
1820 East 17<sup>th</sup> Street, Suite 220  
Idaho Falls, ID 83404  
208-525-7209 (cell 208-705-5621)

## Fire Prevention

### District I

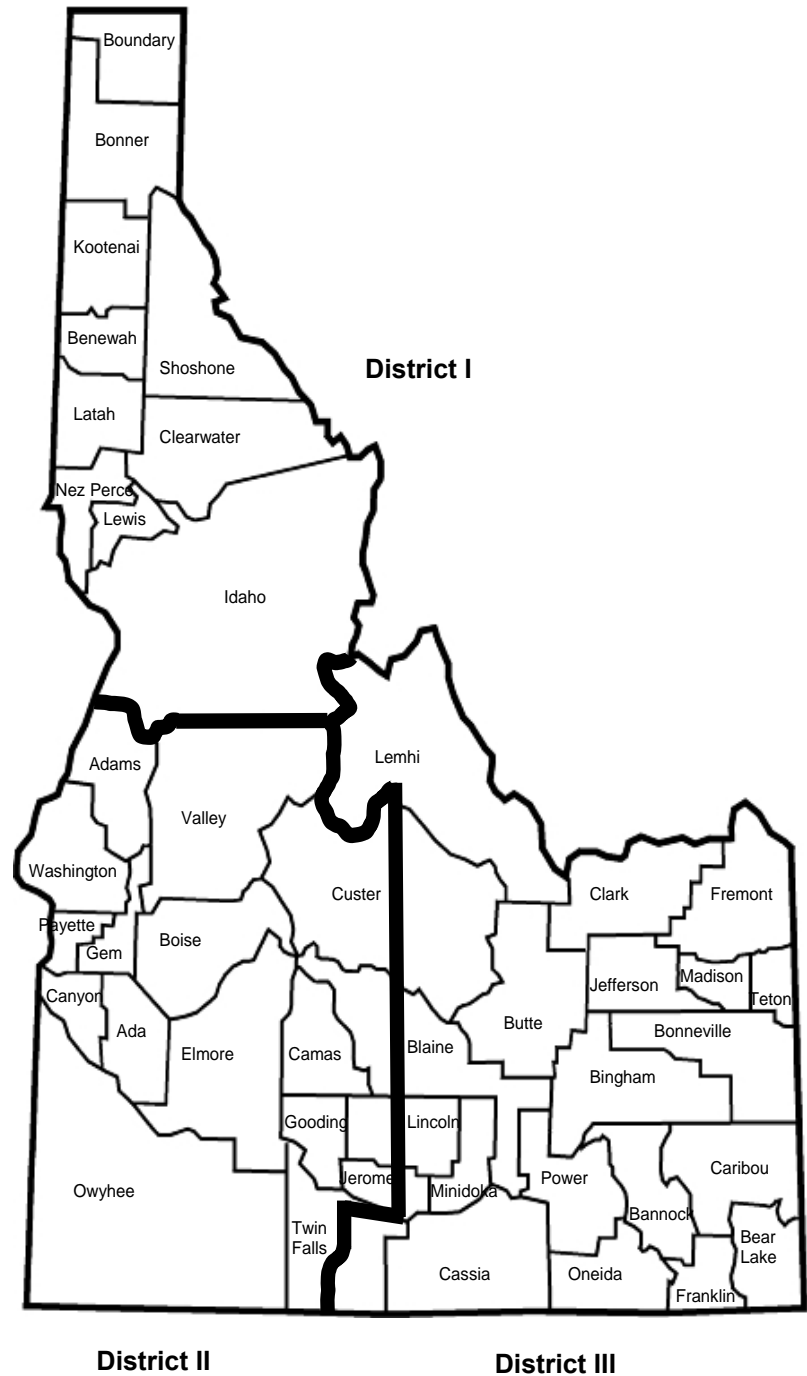
Don Strong  
Deputy Fire Marshal  
(home/office)  
Moscow, ID 83843  
208-882-2368 (cell 208-699-3588)

### District II

Knut Sandahl  
Chief Deputy Fire Marshal  
700 West State Street, 3<sup>rd</sup> Floor  
Boise, ID 83720-0043  
208-334-4370 (cell 208-921-7838)

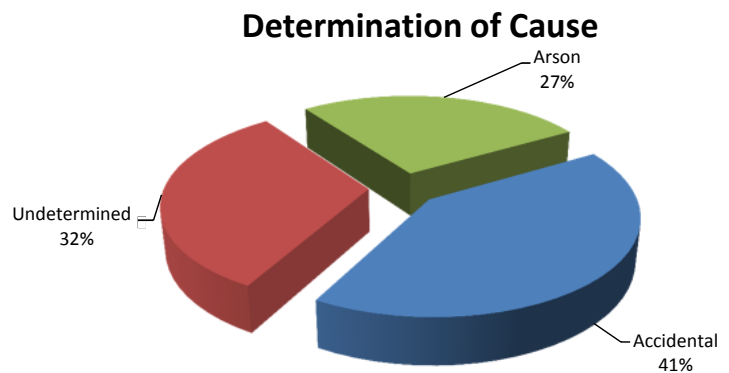
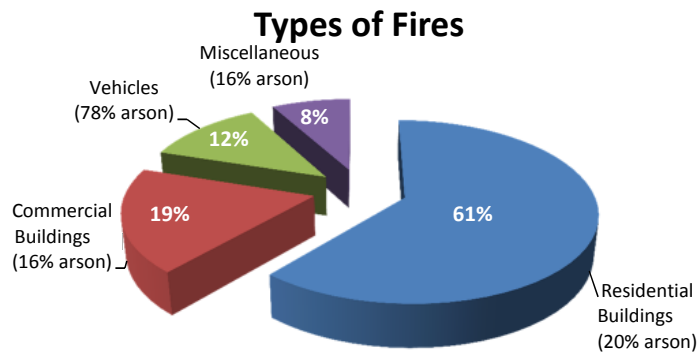
### District III

Verl Jarvie  
Deputy Fire Marshal  
1820 East 17<sup>th</sup> Street, Suite 220  
Idaho Falls, ID 83404  
208-525-7022 (cell 208-705-5620)



# Customer Service

## Fires Investigated by Idaho State Fire Marshal Staff



**\$5,000 AWARD FUND**

It has been determined that this fire is

**ARSON**

If you have information regarding this fire, please call

**1-877-75-ARSON**

Callers may remain anonymous

Sponsored by:



**IDAHO STATE FIRE MARSHAL**  
DEPARTMENT OF INSURANCE



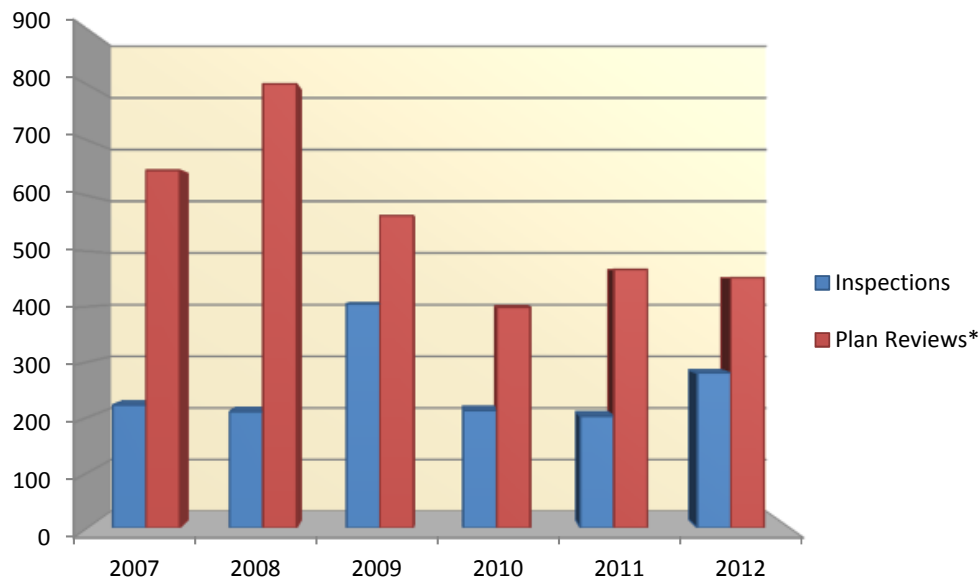
## Inspections and Plan Reviews

The Prevention Section's plan reviews stayed relatively flat, noting only a 0.9% decrease in submittals. However, requests for inspections increased by almost 2%. This can be attributed to local jurisdictions needing additional expertise with difficult code-related issues.

We worked closely with many state agencies as they looked to streamline and improve efficiencies with their operations. Often this involved reasonable application of the adopted fire code, ensuring requirements for public safety and property conservation were met, thus protecting the states investment and assets.

Keeping our local fire service partners informed has always been a top priority. Our district deputies participate in local and regional fire chief organizations by relaying information on statutory changes, proposed fire code requirements and changes in the reference standards. This helps to ensure consistent application of the fire codes and other regulations statewide.

December 31, 2012, marked the end of a long and notable career for Terry Edwards as he signed his last time sheet for the State Fire Marshals Office. Terry began his 16-year career with our office as the Region III Deputy of Prevention. Terry was a valued member of our team who could be relied on to share his vast experience and knowledge of the fire code. We wish him the very best in his retirement from state service.



\*Plan Reviews include fire sprinkler plans.

## Idaho State Fire Marshal Classes

### **International Fire Code**

This course of instruction provides exposure to the contents of the International Fire Code and is presented to fire department personnel by request of the jurisdiction. The course is intended to provide continuity and consistency of code application throughout the state. A four-hour certification test is conducted at the end of the course.

### **Access and Water Supplies Code Requirements and Alternatives**

This program pertains to Chapter 5 of the International Fire Code requirements for access roads and water supplies. The program provides consistent application and interpretation of the code throughout the state. The alternatives are based on other nationally recognized standards to meet with the intent of the International Fire Code. The program is intended for fire chiefs, code officials, fire district commissioners, county commissioners, land use planners and other interested parties.

### **Arson Detection for the First Responder**

This class provides the first responder with knowledge and awareness of the detection of possible incendiary fires.

### **Origin and Cause Fire Investigation**

This 16-hour program is based on the National Fire Protection Association (NFPA) 921 Guide for Fire and Explosion Investigations and provides the student with basic origin and cause fire investigation knowledge and principles.

### **Arson Investigation and Evidence Preservation**

The objective of this program is to instruct students toward a positive approach to arson investigation and prosecution by using multi-agency investigation for a successful arson case. Law enforcement agencies, the Idaho State Police Forensic Lab and the Idaho Attorney General's Office participate with the Idaho State Fire Marshal's Office to instruct this 24-hour course.

### **Introduction to National Fire Incident Reporting System (NFIRS)**

This course provides an introduction to and experience with the NFIRS 5.0 all-incident reportint system. Students learn the purposes and benefits of incident reporting at the local, state and national levels and receive a basic introduction to all modules and their uses.

### **Training Courses Customized to Meet Your Needs**

We can often customize training opportunities in both the fire code and fire investigations to meet your needs. Contact your regional deputy to see how we can best serve you.





Don Strong  
District I

Ivan Hibbert  
District III

Mark Larson  
State Fire Marshal

Terry Edwards  
District III

Jeff Sands  
District II

Mark Aamodt  
District I

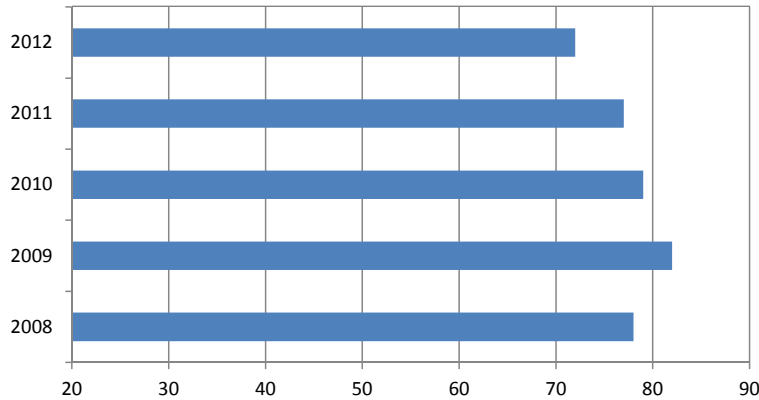
Knute Sandahl  
District II

# **IDAHO STATE FIRE MARSHAL'S OFFICE**

**In 2012**

## Certification and Licensing Five-Year Trend

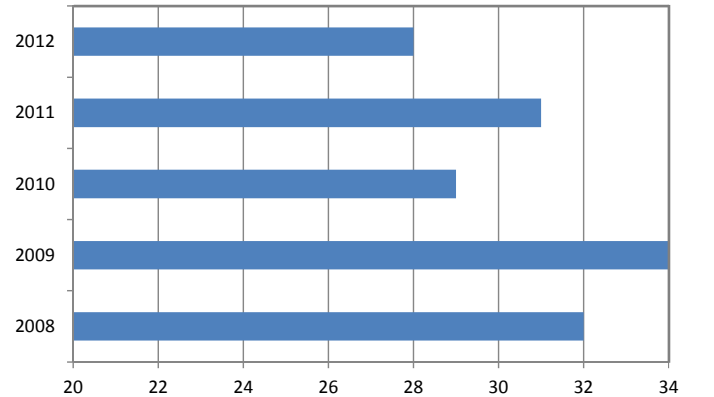
### Fire Protection Sprinkler Contractor Licenses



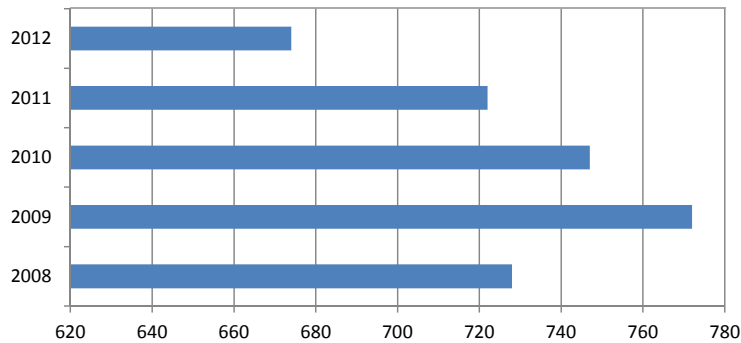
Idaho Code section 41-254 gives the State Fire Marshal the duty to license and regulate fire sprinkler contractors.

Idaho Code section 39-2603 requires anyone who imports or sells fireworks at wholesale to be licensed through the State Fire Marshal's Office.

### Fireworks Wholesale or Import License



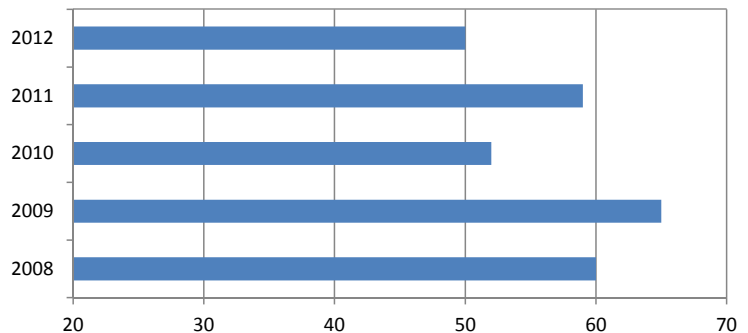
### Fire Code Official Certifications



Idaho Code section 41-255(6) requires all persons acting as assistants to the State Fire Marshal (fire code officials) to be trained.

This is a voluntary certification program established at the request of the licensed fire sprinkler contractors.

### Fire Protection Sprinkler Fitter Licenses



# Idaho's Fire Departments Responded Every:

5.6 minutes to an incident



1.2 hours to a fire



9.2 minutes to a medical call



4.4 hours to a structure fire



1.5 hours to a false alarm



11.5 hours to a vehicle fire

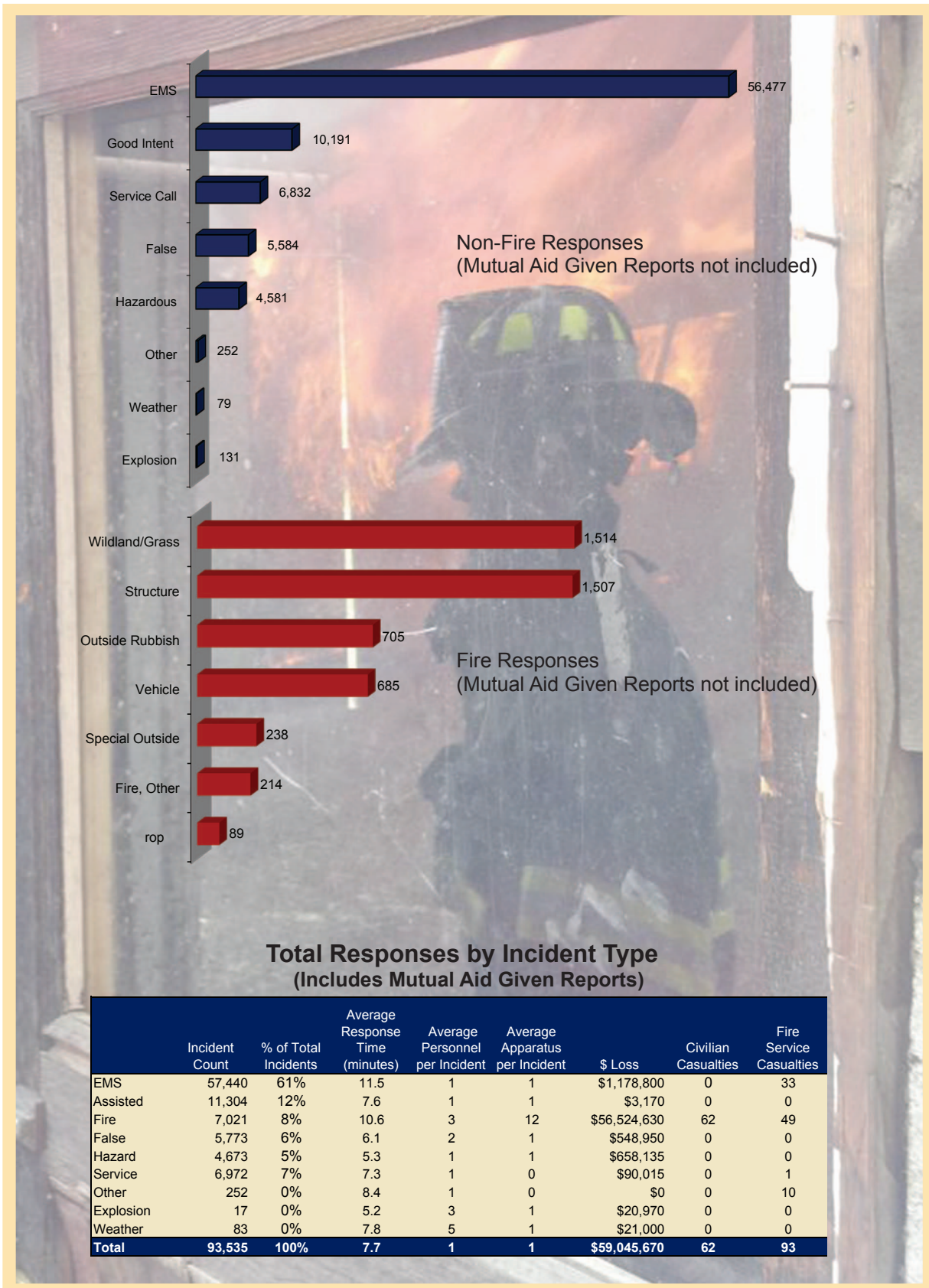


11 hours to an intentionally set fire



# Summary Statistics

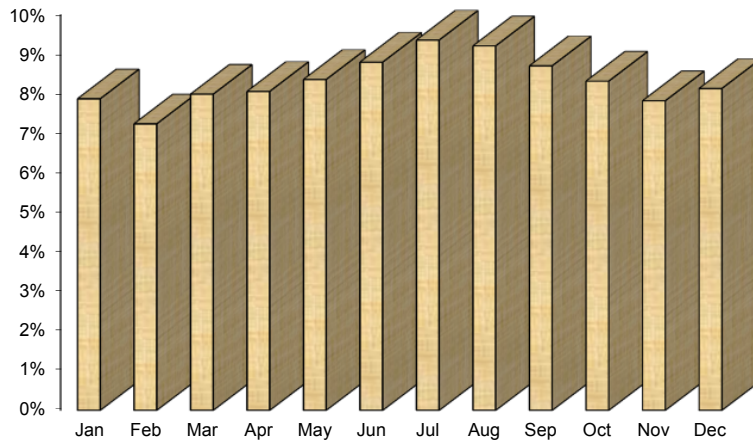
## Incident Summary





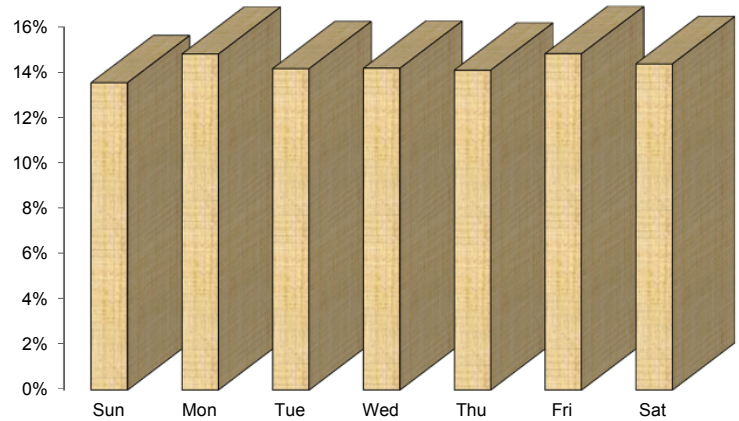
## Month, Day and Hour (Includes Mutual Aid Given Reports)

### Incidents by Month

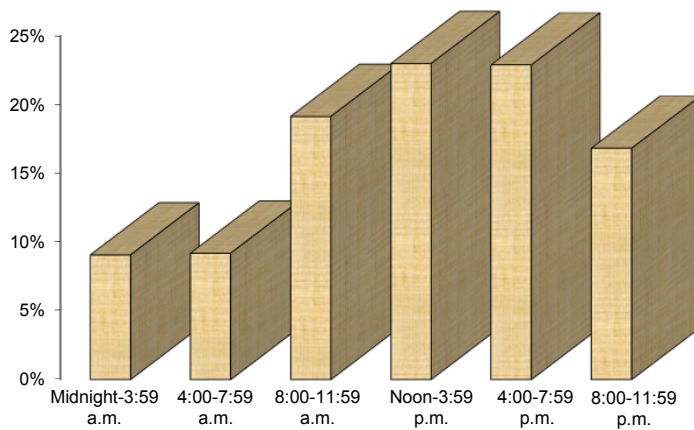


Rescue - Valley County  
Photo provided by Cascade Rural Fire Protection District

### Incidents by Day

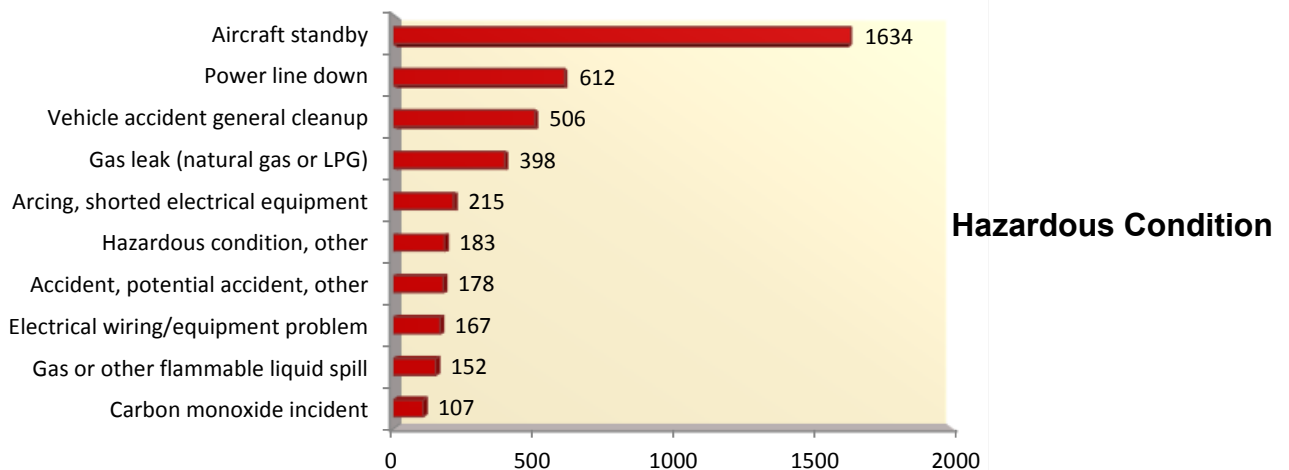
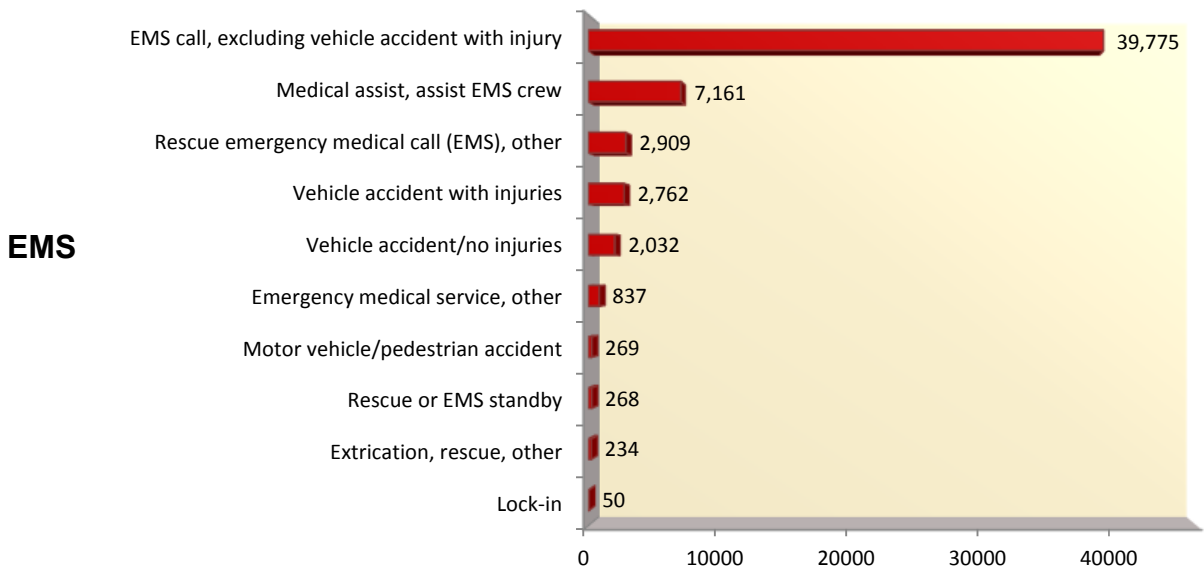
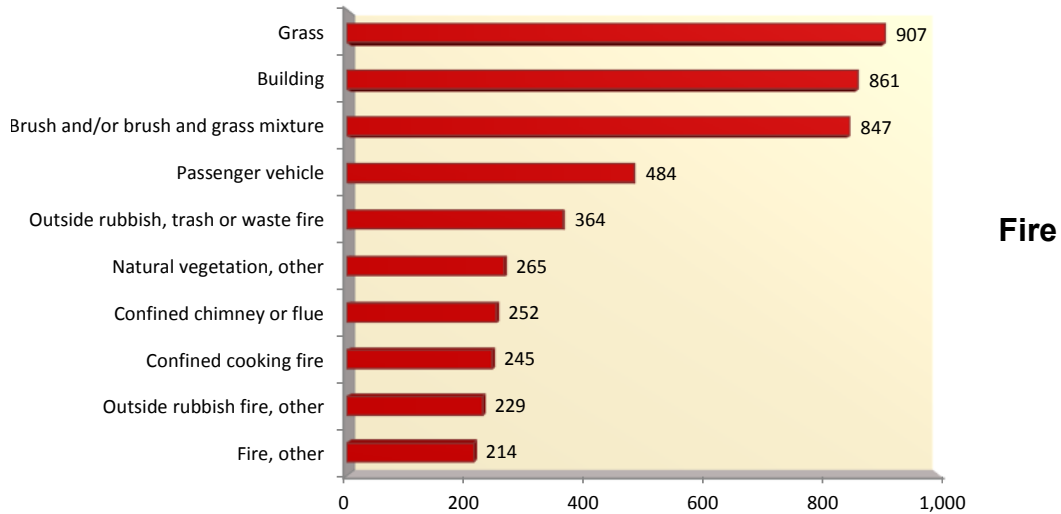


### Incidents by Hour

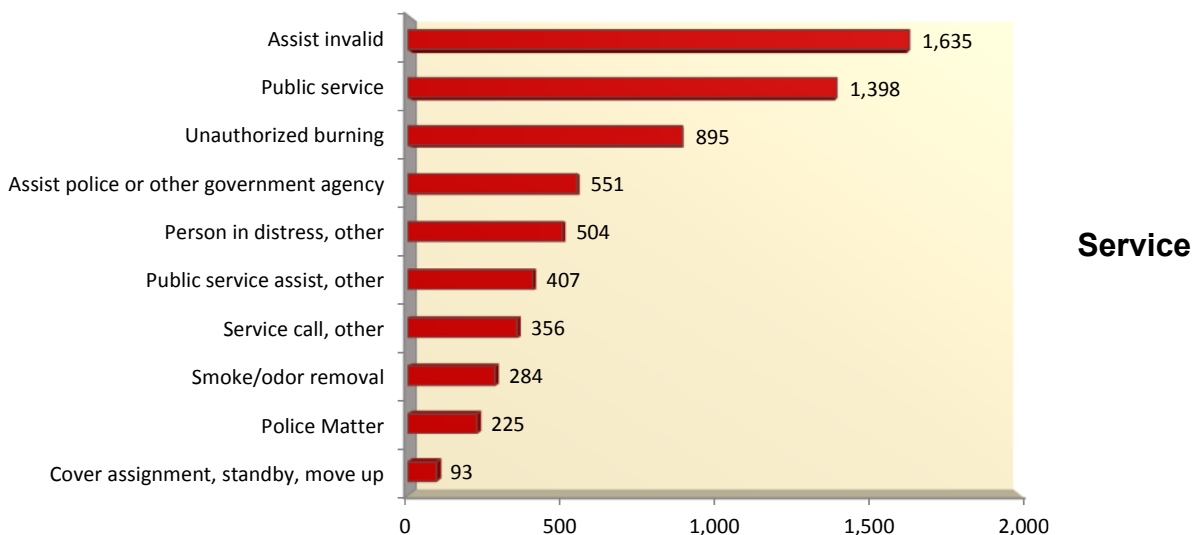
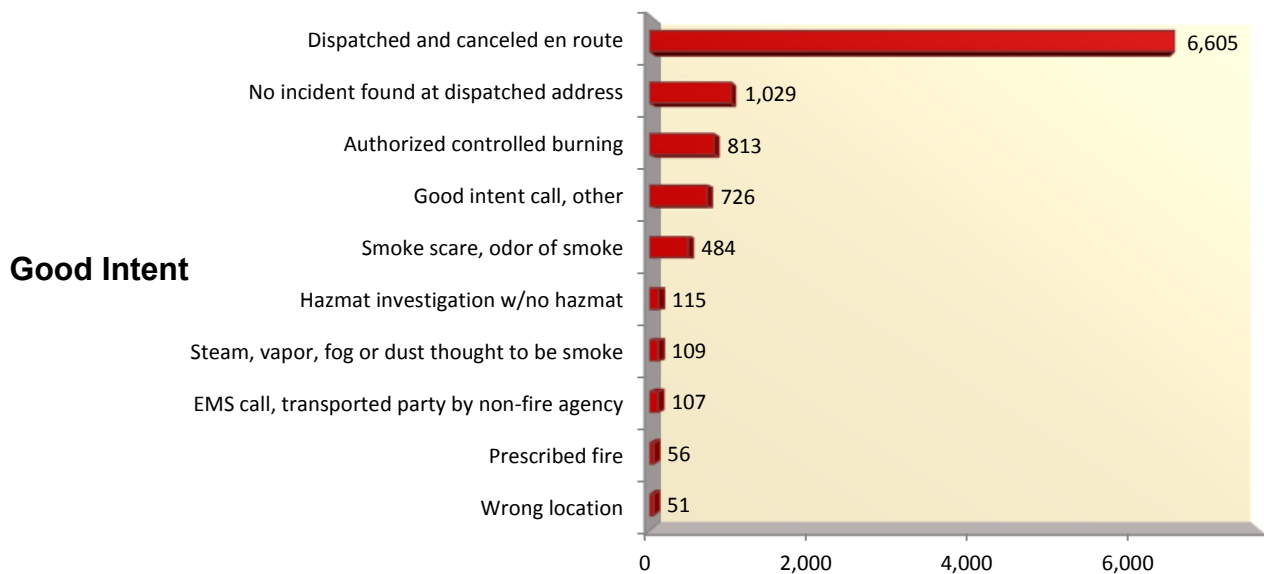
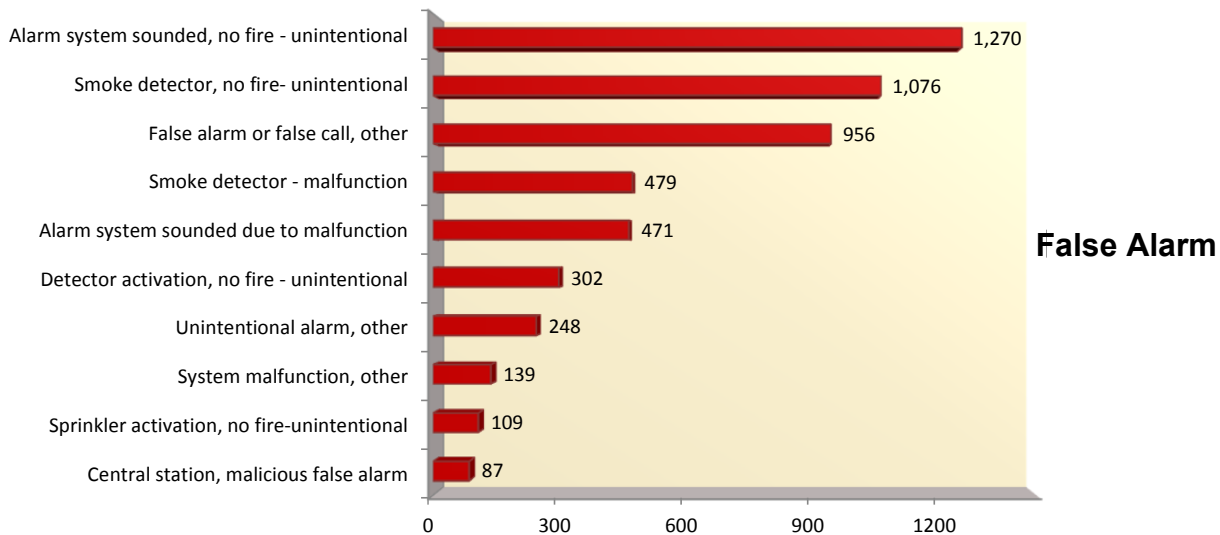


# Summary Statistics

## Top 10 Incident Types by Incident Categories (Mutual Aid Given Reports not included)

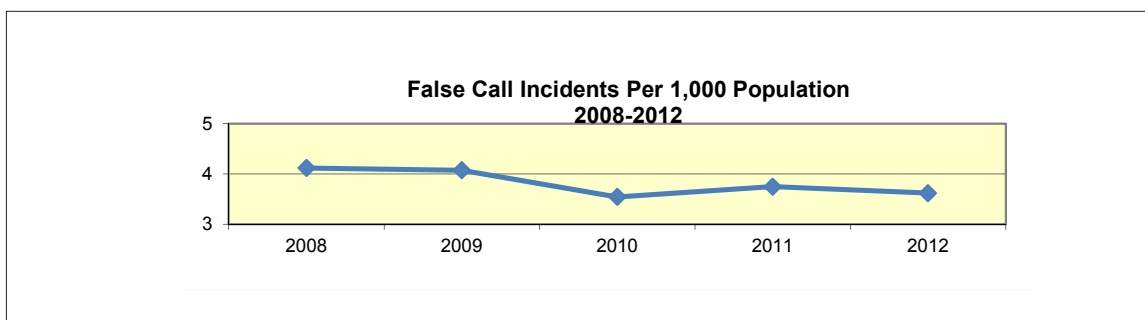
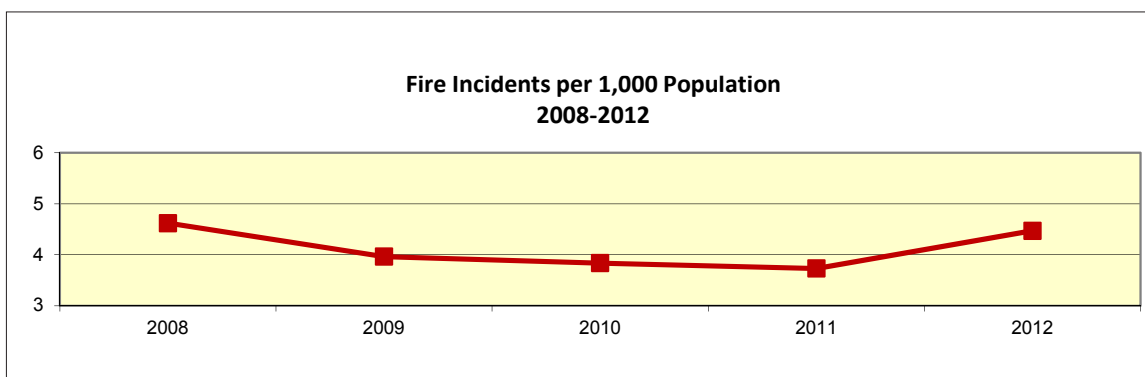
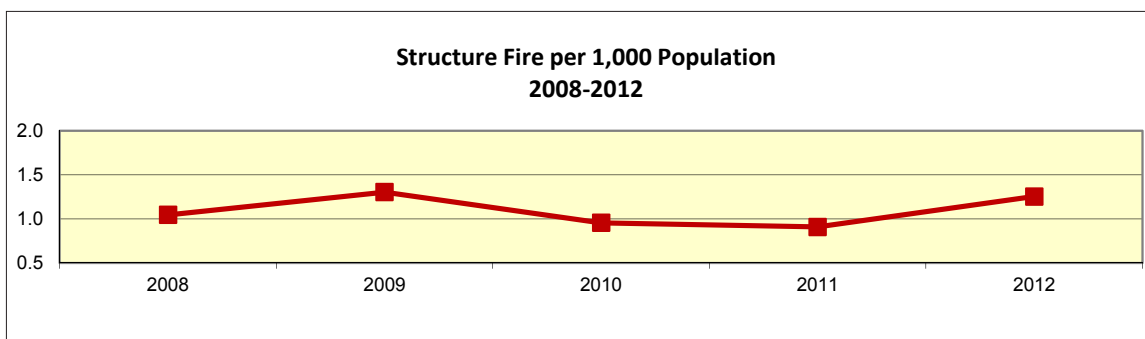
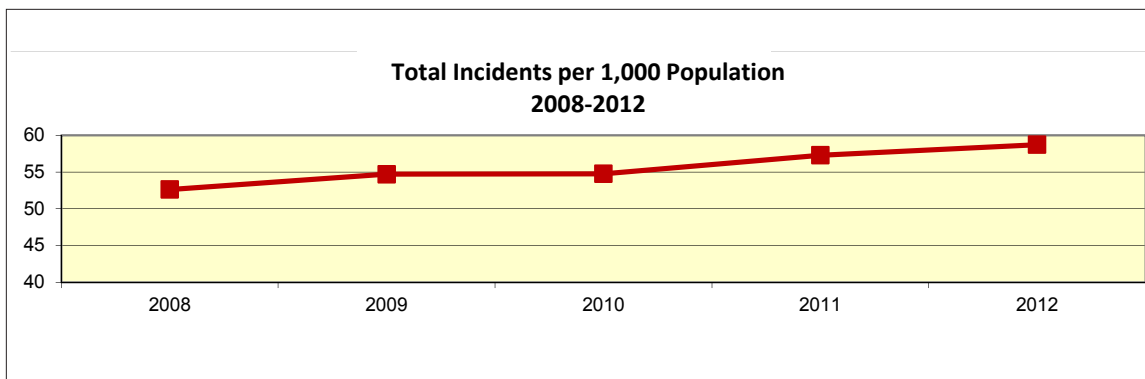


## Top 10 Incident Types by Incident Categories (cont.) (Mutual Aid Given Reports not included)

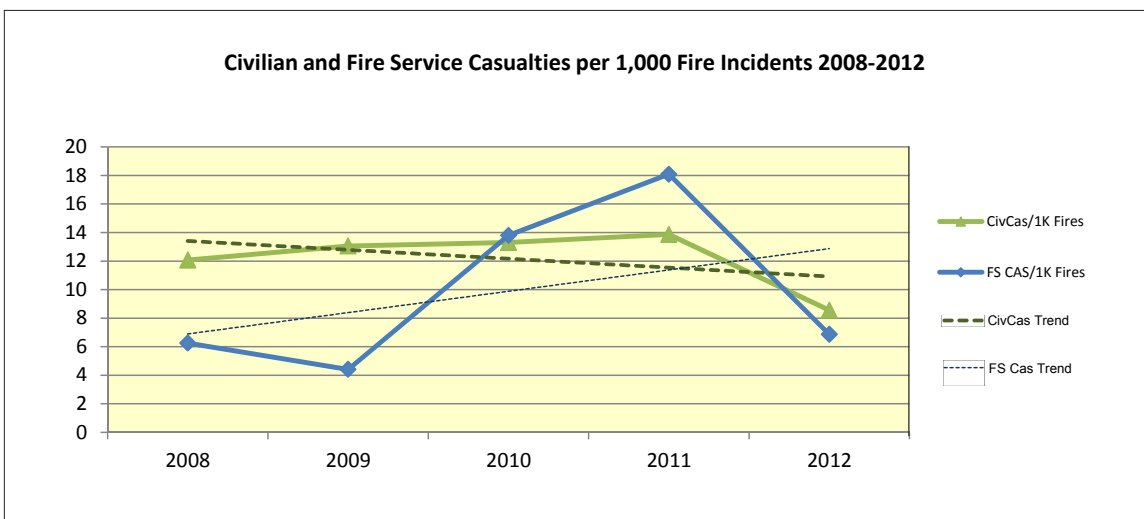
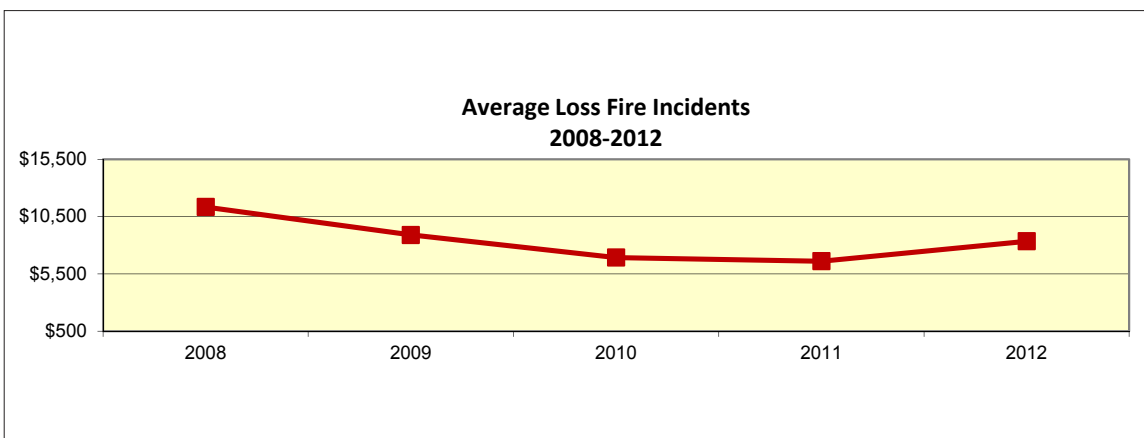
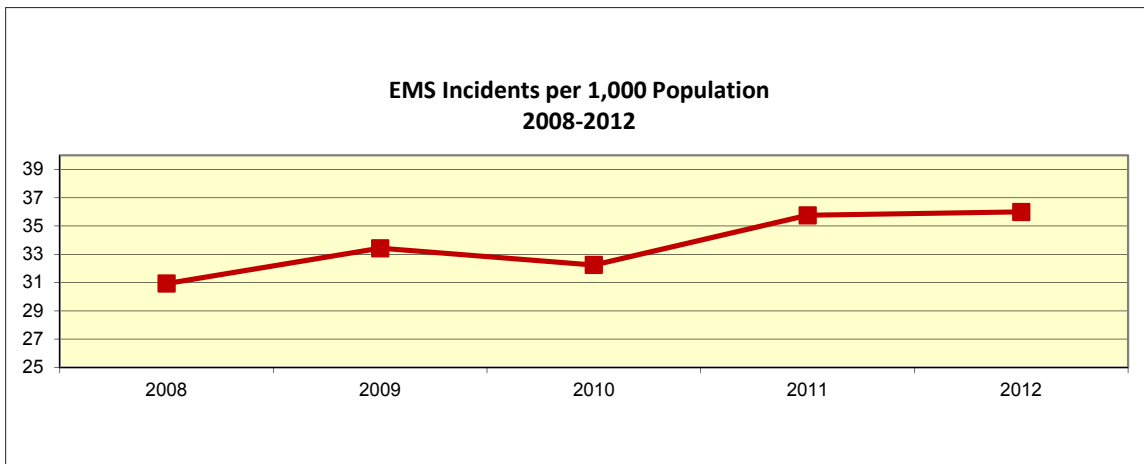


# Summary Statistics

## Five-Year Trends



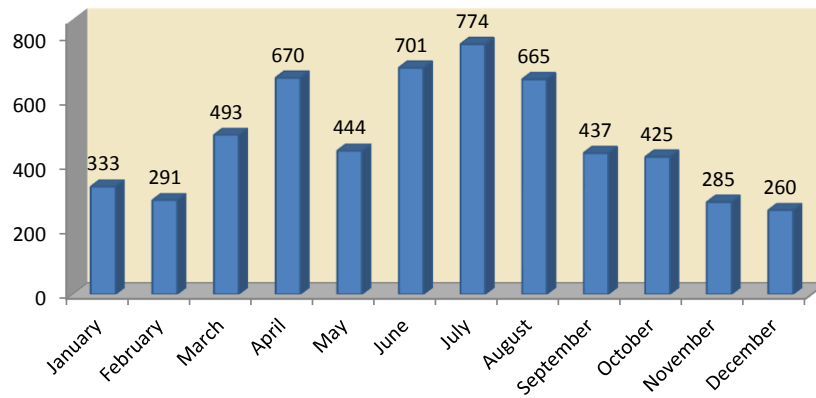
## Five-Year Trends (cont.)



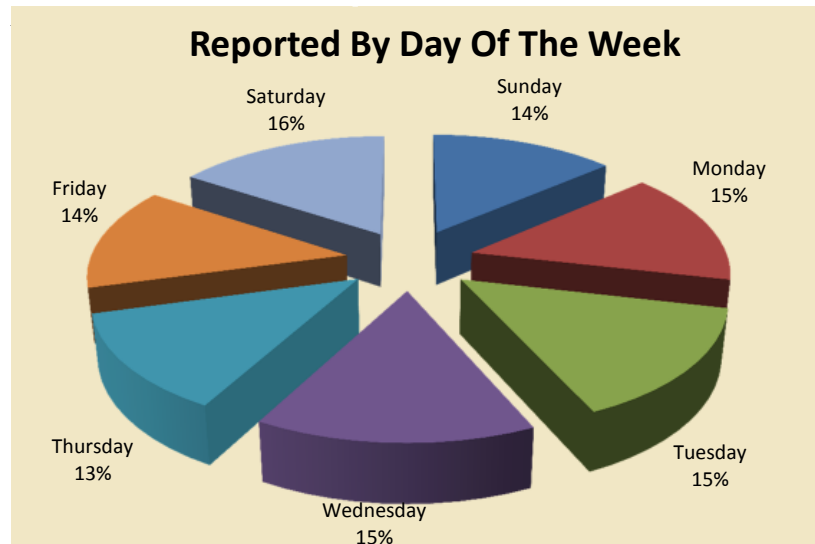
# Summary Statistics

## Fire Calls by Month and Day of Week

### Reported By Month



### Reported By Day Of The Week

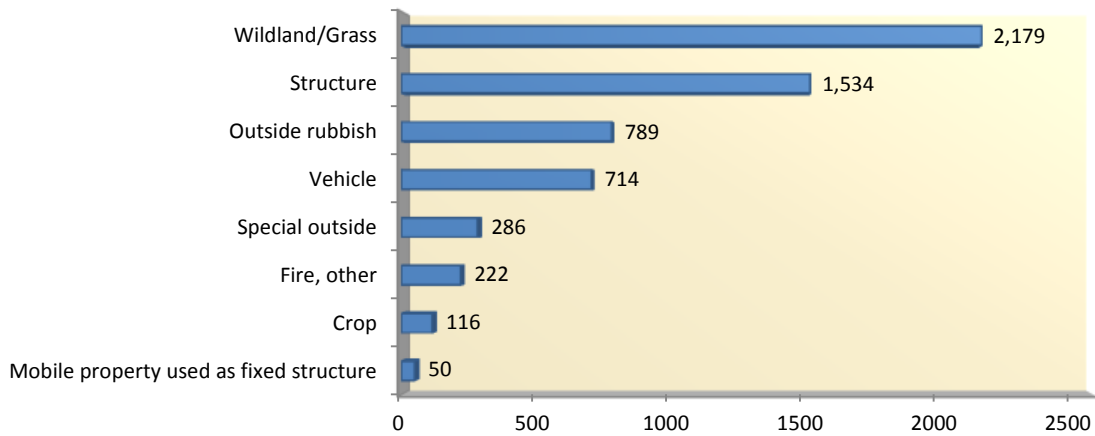


Sheep Fire - Idaho County  
Photo provided by Salmon  
River Rural Fire Department

# Summary Statistics

## Fires in Idaho (Mutual Aid Given Reports not included)

Fire Groups	Incident Count	% of Total Fire Incidents	\$Loss	Civilian Casualties	Fire Svc Casualties
Wildland/grass	2,179	37%	\$10,043,722	3	11
Structure	1,534	26%	\$36,803,738	42	34
Outside rubbish	789	13%	\$96,929	0	0
Vehicle	714	12%	\$6,489,015	13	1
Special outside	286	5%	\$1,575,666	0	1
Fire, other	222	4%	\$555,249	2	0
Crop	116	2%	\$615,780	0	0
Mobile property used as fixed structure	50	1%	\$344,531	2	2
<b>Totals</b>	<b>5,890</b>	<b>100%</b>	<b>\$56,524,630</b>	<b>62</b>	<b>49</b>



Gas Line Fire - Nez Perce County  
Photo provided by Lewiston Fire Department

# Summary Statistics

## Comparisons of 2011 and 2012 County Populations and Reported Incidents

County	2012 Population	2011 Population	Difference	Total 2012 Incidents Reported	Total 2011 Incidents Reported	Difference	Total 2012 Fire Incidents Reported	Total 2011 Fire Incidents Reported	Difference
Ada	409,061	400,842	8,219	26,618	26,214	404	1,093	1,029	64
Adams	3,915	3,977	-62	56	35	21	34	14	20
Bannock	83,800	83,691	109	7,360	7,560	-200	269	245	24
Bear Lake	5,907	6,001	-94	8	61	-53	6	40	-34
Benewah	9,117	9,209	-92	299	280	19	78	90	-12
Bingham	45,474	45,952	-478	1,050	765	285	424	256	168
Blaine	21,146	21,199	-53	1,571	1,839	-268	127	82	45
Boise	6,835	7,025	-190	354	303	51	73	105	-32
Bonner	40,476	40,808	-332	3,169	2,773	396	212	223	-11
Bonneville	106,684	105,772	912	3,686	3,359	327	348	242	106
Boundary	10,808	10,804	4	198	341	-143	27	46	-19
Butte	2,740	2,822	-82	50	40	10	36	17	19
Camas	1,077	1,124	-47	10	18	-8	8	8	0
Canyon	193,888	191,694	2,194	13,950	12,957	993	805	639	166
Caribou	6,787	6,850	-63	61	21	40	49	13	36
Cassia	23,249	23,186	63	576	852	-276	122	107	15
Clark	869	949	-80	0	0	0	0	0	0
Clearwater	8,590	8,702	-112	90	112	-22	67	68	-1
Custer	4,331	4,333	-2	76	59	17	19	11	8
Elmore	26,223	26,346	-123	214	218	-4	113	104	9
Franklin	12,786	12,850	-64	141	102	39	61	29	32
Fremont	12,957	13,128	-171	128	57	71	86	26	60
Gem	16,673	16,665	8	382	292	90	153	133	20
Gooding	15,291	15,475	-184	598	545	53	199	151	48
Idaho	16,308	16,446	-138	89	117	-28	59	76	-17
Jefferson	26,684	26,301	383	228	150	78	83	65	18
Jerome	22,499	22,682	-183	1,456	1,465	-9	245	191	54
Kootenai	142,357	141,132	1,225	17,167	16,779	388	547	589	-42
Latah	38,184	37,704	480	1,141	1,014	127	148	102	46
Lemhi	7,758	7,967	-209	121	4	117	83	3	80
Lewis	3,889	3,822	67	47	71	-24	12	30	-18
Lincoln	5,277	5,186	91	28	14	14	14	8	6
Madison	37,456	37,864	-408	527	415	112	148	70	78
Minidoka	20,037	20,155	-118	953	828	125	276	177	99
Nez Perce	39,531	39,543	-12	2,535	2,488	47	109	171	-62
Oneida	4,215	4,215	0	14	0	14	12	0	12
Owyhee	11,439	11,438	1	186	159	27	93	100	-7
Payette	22,639	22,624	15	836	574	262	165	129	36
Power	7,778	7,766	12	13	8	5	7	2	5
Shoshone	12,702	12,672	30	1,304	1,308	-4	50	76	-26
Teton	10,052	10,166	-114	418	425	-7	48	31	17
Twin Falls	78,595	78,005	590	4,293	4,428	-135	403	263	140
Valley	9,545	9,638	-93	1,478	1,518	-40	93	69	24
Washington	10,099	10,255	-156	217	214	3	108	84	24
<b>TOTALS</b>	<b>1,595,728</b>	<b>1,584,985</b>	<b>10,743</b>	<b>93,696</b>	<b>90,782</b>	<b>2,914</b>	<b>7,112</b>	<b>5,914</b>	<b>1,198</b>



# Fire Stations Across Idaho



**Bear Lake County Volunteer Fire Protection District  
Georgetown Station**



**West Jefferson Fire Control District**



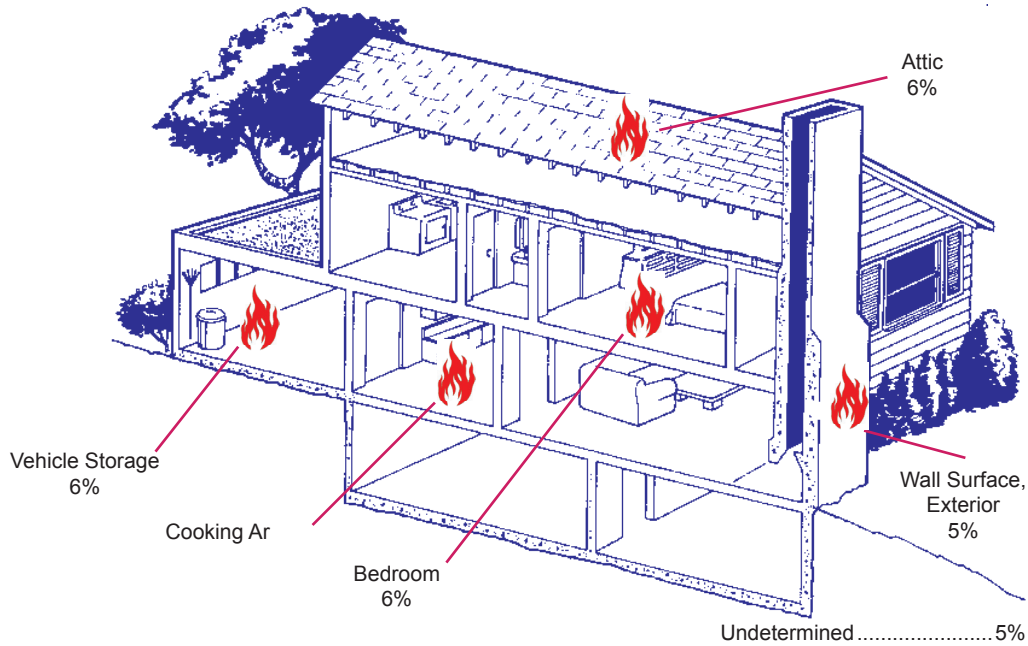
**Coeur d'Alene Fire Department  
Station #2 - Ramsey Road**



**Stites Fire Department**

# Structure Fires

## Top 6 Identified Areas of Origin for Residential Structures in 2012



## Most Frequent Residential Structure Fire Areas of Origin

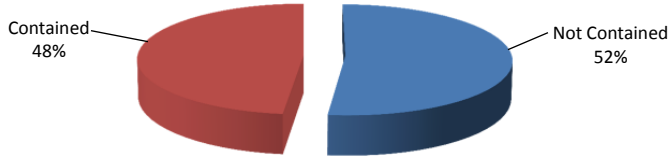
(Mutual Aid Given Reports not included)

	Incident Count	% of Total Res Struct Fire Incidents	Response Time (minutes)	\$ Loss	% of Total \$ Loss	Civilian Cas	% of Total Civ Cas	Fire Svc Cas	% of Total FS Cas
Cooking area, kitchen	194	23%	11	\$2,456,432	9%	13	33%	3	13%
Bedroom-less than 5 persons; jail/prison included	51	6%	6	\$1,154,700	4%	7	18%	0	0%
Vehicle storage area: garage, carport	51	6%	6	\$2,328,200	9%	1	3%	3	13%
Attic:vacant, crawl space above top story, cupola	49	6%	8	\$894,100	3%	0	0%	1	4%
Undetermined	46	5%	13	\$6,701,500	26%	4	10%	0	0%
Wall surface, exterior	45	5%	6	\$632,150	2%	1	3%	1	4%
Function area, other	31	4%	8	\$784,570	3%	1	3%	0	0%
Exterior balcony, unenclosed porch	28	3%	7	\$2,254,370	9%	1	3%	0	0%
Structural area, other	28	3%	10	\$525,160	2%	0	0%	1	4%
Wall assembly	27	3%	8	\$630,900	2%	0	0%	1	4%
<b>Totals of Most Frequent Residential Structure Fire Areas of Origin</b>	<b>550</b>	<b>64%</b>	<b>8</b>	<b>\$18,362,082</b>	<b>71%</b>	<b>28</b>	<b>72%</b>	<b>10</b>	<b>42%</b>
<b>Total Residential Structure Fire Incidents</b>	<b>855</b>		<b>9</b>	<b>\$25,958,063</b>		<b>39</b>		<b>24</b>	



Residential Structure Fire - Blaine County  
Photo provided by Carey Rural Fire Protection District

## Residential Structure Fire Spread - Contained in Room of Origin (Mutual Aid Given Reports not included)



"Contained fire" is defined as fire spread that is reasonably expected to remain in check under prevailing conditions.

	Incident Count	% of Total Incidents	\$ Loss	% of Total Loss	Civilian Cas	% of Total Civ Cas	Fire Svc Cas	% of Total Fire Svc Cas
Not Contained	360	52%	\$23,728,211.00	90%	22	63%	18	75%
Contained	334	48%	\$2,494,455.00	10%	13	37%	6	25%
<b>Total</b>	<b>694</b>		<b>\$26,222,666.00</b>		<b>35</b>		<b>24</b>	

## Residential Structure Fires - Confined/ Not Confined Fires Building/Fixed Mobile Property Incidents (Mutual Aid Given Reports not included)



"Confined fires" are defined as fires where the flame does not extend beyond a non-combustible container. Stove top, trash can and chimney fires are examples of confined fires.

	Incident Count	% of Incident Count	\$ Loss	Civilian Casualties	Fire Svc Casualties
Not Confined	699	58%	\$25,918,161.00	35	25
Confined	497	42%	\$106,222.00	6	0
<b>Total</b>	<b>1,196</b>		<b>\$26,024,383.00</b>	<b>41</b>	<b>25</b>

# Structure Fires

## Reported Dollar Large Loss Structure Fire Events (\$500,000 or more)

Estimated Property / Contents	Date	Location	Responding Fire Department	Incident Type / Property Use	Heat Source / Cause of Fire
\$9,500,000	June 2012	Pocatello	Pocatello Fire Department	Natural vegetation Fire, other / Open land or field	Undetermined / Undetermined
\$3,100,000	September 2012	Wilder	Wilder Rural Fire Protection District	Building fire / Outbuilding or shed	Chemical reaction / Unintentional
\$3,000,000	October 2012	Harrison	East Side Fire Protection District	Building fire / 1- or 2-family dwelling	Undetermined / Undetermined
\$1,500,000	February 2012	Post Falls	Kootenai County Fire & Rescue	Building fire / 1- or 2-family dwelling	Undetermined / Cause under investigation
\$1,300,000	March 2012	Preston	Franklin County Fire District	Building fire / Manufacturing, processing	Spark, ember or flame from operating equipment / Cause under investigation
\$525,000	March 2012	Coeur d'Alene	Mica-Kidd Island Fire Protection District	Fire in structure other than a building / 1- or 2- family dwelling	Undetermined / Unintentional



Structure Fire on Highway 97 - Kootenai County  
Photo provided by East Side Fire Protection District

## Structure Fires by Property Use

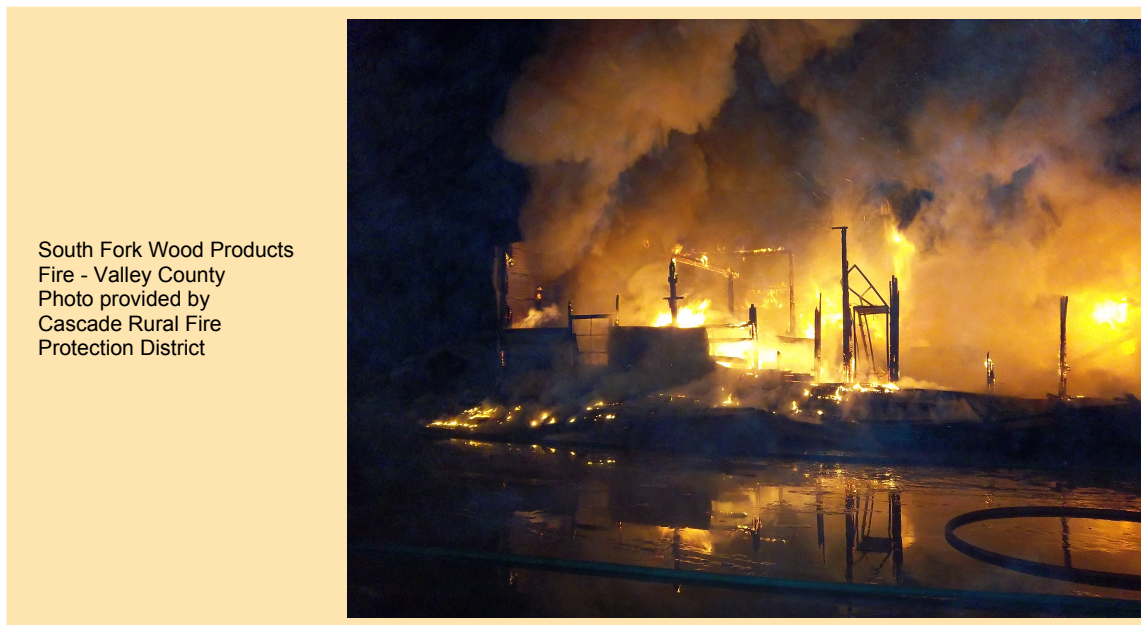
	Incident Count	% of Total Structure Fire Incidents	Response Time (minutes)	\$ Loss	% of Total Structure Fire \$ Loss	Civilian Casualties	% of Total Structure Fire Civ Cas	Fire Service Casualties	% of Total Structure Fire FS Cas
Residential	1,199	77%	9	\$26,539,883	70%	41	95%	25	76%
Storage	108	7%	9	\$4,664,012	12%	1	2%	6	18%
Outside/special property	81	5%	8	\$1,090,970	3%	0	0%	0	0%
Business	48	3%	4	\$828,174	2%	0	0%	0	0%
Manufacturing	31	2%	7	\$2,196,600	6%	0	0%	0	0%
Assembly	35	2%	7	\$672,670	2%	1	2%	1	3%
Health care/jail	17	1%	5	\$173,615	0%	0	0%	0	0%
Other	3	0%	8	\$419,000	1%	0	0%	0	0%
Industry/utility/defense	25	2%	16	\$955,550	3%	0	0%	1	3%
Educational	17	1%	5	\$41,745	0%	0	0%	0	0%
None	2	0%	13	\$68,000	0%	0	0%	0	0%
Undetermined	1	0%	6	\$0	0%	0	0%	0	0%
<b>Total Structure Fires</b>	<b>1,567</b>		<b>9</b>	<b>\$37,650,219</b>		<b>43</b>		<b>33</b>	

Residential fires accounted for 77% of all structure fire incidents reported in 2012; a 2% increase from the 2011 figures. The estimated dollar loss for residential fires was 70% of the total losses reported for all structure fires.

The overall number of structure fires reported in 2012 was nearly the same as in 2011. The number of residential fires was nearly the same as reported in 2011, but the loss value of the 2012 fires increased by 47% to more than \$26,500,000.\*

The National Fire Incident Reporting System describes “residential” as a building or a structure providing living or sleeping accommodations. “Structure” is defined as an assembly of materials forming a construction for occupancy or use to serve a specific purpose. This includes, but is not limited to, buildings, open platforms, bridges, roof assemblies, tents, air-supported structures and grandstands.

*\*These numbers do not reflect all the losses generated by the Charlotte Fire near Pocatello in June 2012.*



South Fork Wood Products  
Fire - Valley County  
Photo provided by  
Cascade Rural Fire  
Protection District

# Structure Fires

## Structure Fires by Property Use

NFIRS Code	Property Use	# of Structure Fires
<b><u>Residential Property Uses</u></b>		
400	Residential, other	46
419	1- or 2- family dwelling, detached, manufactured home, mobile home not in transit, duplex	966
429	Multi-family dwelling - includes apartments, condos, townhouses, row houses, tenements	138
439	Boarding/rooming house - includes residential hotels and shelters	3
449	Hotels/motels, commercial	14
459	Resident board and care	5
460	Dormitory type residence, other	2
462	Sorority house, fraternity house	11
464	Barracks, dormitory	13
<b><u>Public Property Uses</u></b>		
	Assembly	36
	Educational	17
	Health care, detention and correction	17
	Mercantile, business	50
	Property use, other	5
<b><u>Other Property Uses</u></b>		
600	Utility, defense, agriculture, mining, other	1
642	Electrical distribution	2
648	Sanitation utility	2
655	Crops or orchard - includes plant nurseries and greenhouses as well as the processing or packaging of agricultural crops or fruit that occurs on the property	6
659	Livestock production	11
679	Mine or quarry	1
700	Manufacturing, processing - includes properties where there is mechanical or chemical transformation of inorganic or organic substance into new products; factories making products of all kinds and properties devoted to operations such as processing, assembling, mixing, packing, finishing or decorating and repairing	31
800	Storage, other	3
807	Outside material storage area	5
808	Outbuilding or shed - includes tools and contractor sheds; excludes contractor field offices	60
816	Grain elevator, silo	2
819	Livestock, poultry storage - includes barns, stockyards and animal pens	7
880	Vehicle storage, other - includes airplane and boat hangers; excludes parking garages	3
881	Parking garage, detached residential garage - includes detached parking structures associated with multi-family housing	17
882	Parking garage, general vehicle - includes bus, truck, fleet or commercial parking structures	2
891	Warehouse	6
899	Residential or self-storage units - includes mini-storage units	3
900	Outside or special property, other	6
919	Dump, sanitary landfill. Includes recycling collection points.	1
921	Bridge, trestle	1
926	Outbuilding, protection shelter - includes toll booths, weather shelters, mailboxes, telephone booths, privies, charitable collection boxes and aerial tramways; excludes parking garages	18
931	Open land or field - includes grasslands and brush lands; excludes crops or areas under cultivation	22
936	Vacant lot; undeveloped land, not paved - may include incidental or untended plant growth or building material or debris	3



## Structure Fires by Property Use (cont.)

937	Beach	1
938	Graded and cared-for plots of land - includes parks, cemeteries, golf courses and residential yards	8
951	Railroad right of way	1
960	Street, other	1
961	Highway or divided highway - includes limited-access highways with few intersections or at grade	1
962	Residential street, road or residential driveway	8
963	Street or road in commercial area	1
965	Vehicle parking area - includes paved non-residential driveways; excludes parking garages	1
981	Construction site	1
983	Pipeline, power line or other utility right of way	6
NNN	None	2
UUU	Undetermined	1



Deep Water Fire - Kootenai County  
Photo provided by Northern Lakes Fire Protection District

# Fire Stations Across Idaho



Buhl Fire Department - Station #2



Weiser Area Rural Fire District



West Priest Lake District - Station #2



Timberlake Fire Protection District  
Station 111



South Boundary Fire Protection District - Deep Creek Rd



# Fire Stations Across Idaho



Cascade Rural Fire Protection District  
Station #2



Spirit Lake Fire Protection District  
Blanchard Station



East Side Fire Protection District  
Station #1 - Carlin Bay



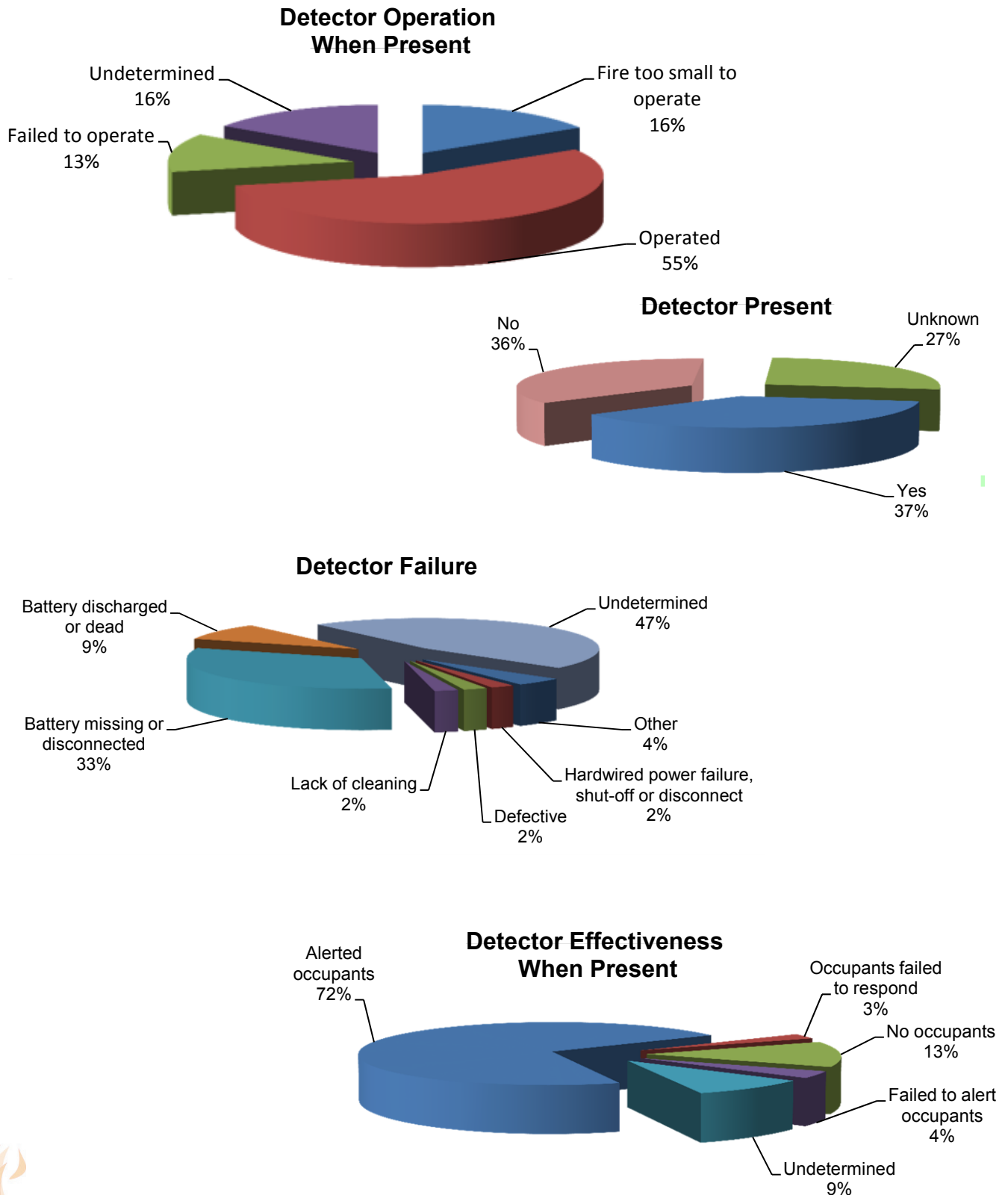
Central Fire Protection District  
Station #2 - Ririe



South Fremont Rural Fire Station

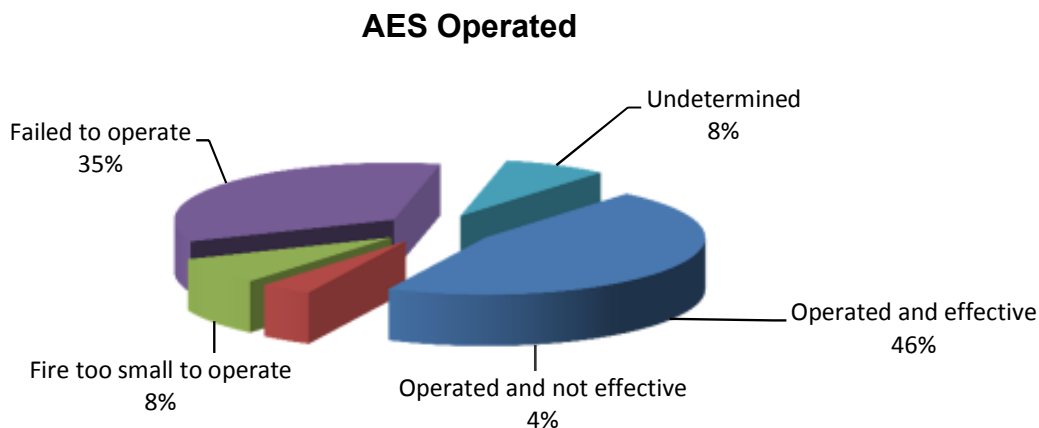
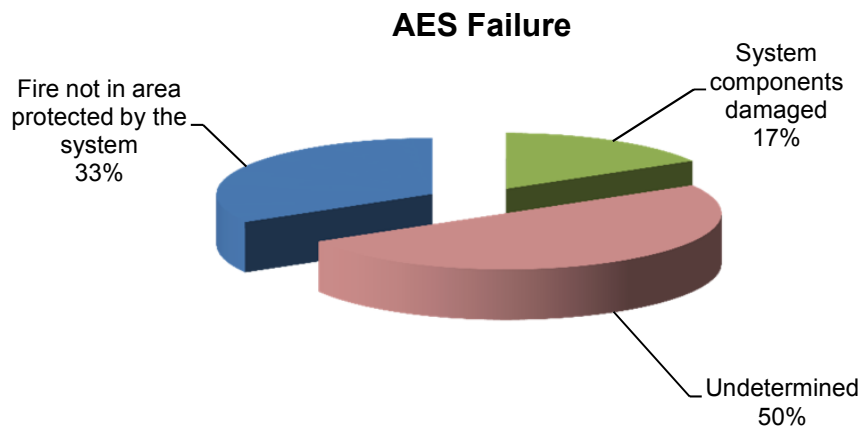
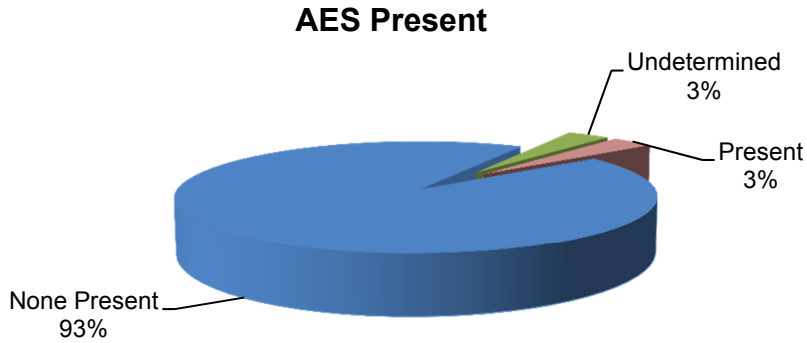
# Structure Fires

## Smoke Detector Performance (Mutual Aid Given Reports not included)



## Automatic Extinguishing Systems (AES)

(Mutual Aid Given Reports not included)

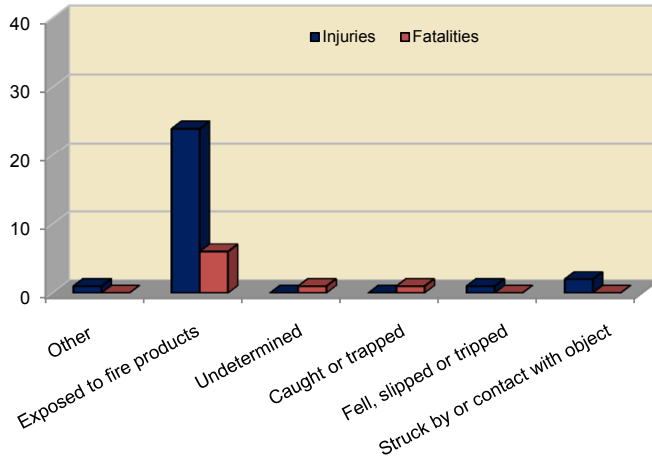


# Civilian Fire Casualties

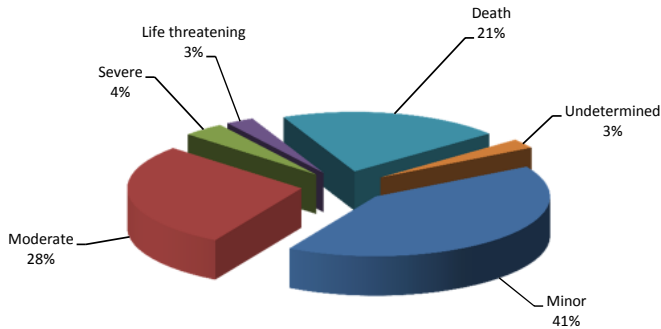
## Injuries and Fatalities

"Civilian Fire Casualty" means a person who is injured or dies as the direct result of a fire-related incident. The term civilian includes, but is not limited to, private citizens, emergency medical service responders (not fire department personnel) and police.

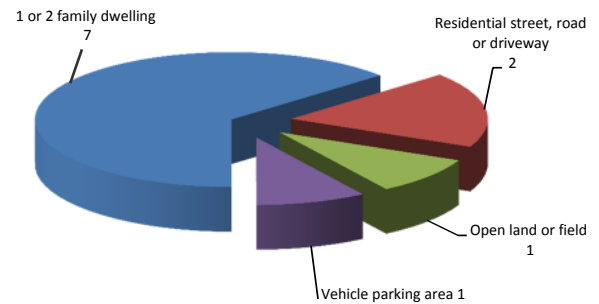
**Civilian Fire Casualties by Cause of Injury**



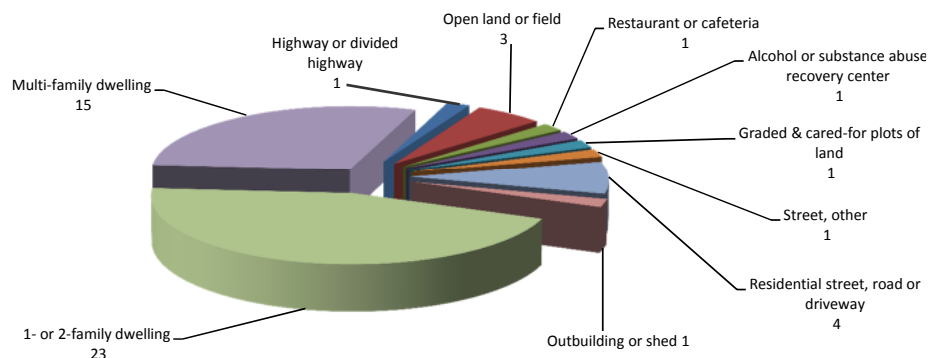
**Civilian Fire Casualties by Severity**



**Civilian Fire Fatalities By Property Use**

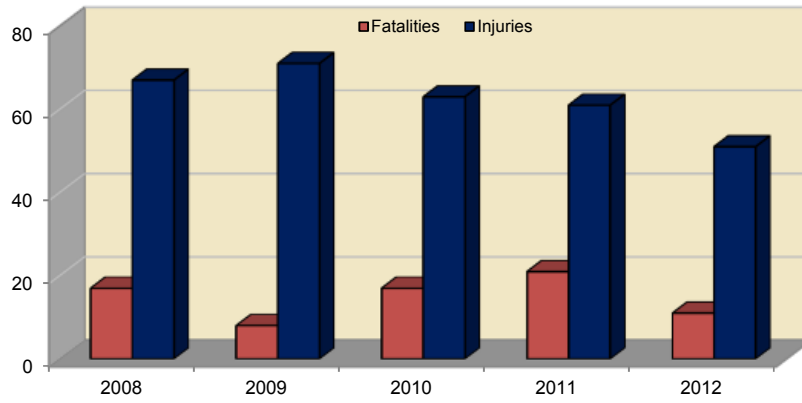


**Civilian Fire Injuries By Property Use**



# Civilian Fire Casualties

## Civilian Fire Casualties for Last Five Years

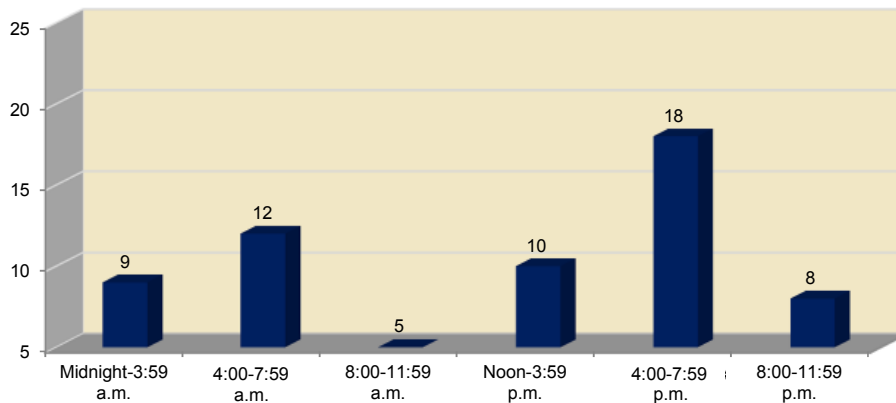


Fire Prevention Week - Nez Perce County  
Photo provided by Lewiston Fire Department



Fire Department Activity - Bonner County  
Photo provided by Sandpoint Fire Department

## 2012 Civilian Fire Casualties by Hour of Day



## 2012 Civilian Fire Fatalities

1/18/2012

Female-52 years old  
Female-23 years old  
Kootenai County  
Building fire  
1- or 2-family dwelling  
Failure of equipment or heat source

2/28/2012

Female-65 years old  
Bannock County  
Building fire  
1- or 2-family dwelling  
Cause under investigation

3/25/2012

Male-58 years old  
Ada County  
Building fire  
1-or 2-family dwelling  
Unintentional

4/2/2012

Male-unknown years old  
Boundary County  
Fire in camp trailer  
Vehicle parking area  
Unintentional

7/23/2012

Female-75 years old  
Ada County  
Building fire  
1- or 2-family dwelling  
Cause under investigation

8/7/2012

Male-58 years old  
Canyon County  
Passenger vehicle fire  
Residential road  
Unintentional

9/7/2012

Male-45 years old  
Kootenai County  
Building fire  
1- or 2-family dwelling  
Intentional

10/22/2012

Female-73 years old  
Benewah County  
Passenger vehicle fire  
Residential road  
Unintentional

11/3/2012

Male-29 years old  
Latah County  
Passenger vehicle fire  
Open land or field  
Cause undetermined after investigation

12/25/2012

Male-67 years old  
Bingham County  
Building fire  
1- or 2-family dwelling  
Cause under investigation



# Fire Stations Across Idaho



**Downey Volunteer Fire District**



**Shoshone County Fire Protection District  
#2 - Pinehurst Station**



**Tensed Rural Fire District**



**Wood River Fire & Rescue - Station #3**

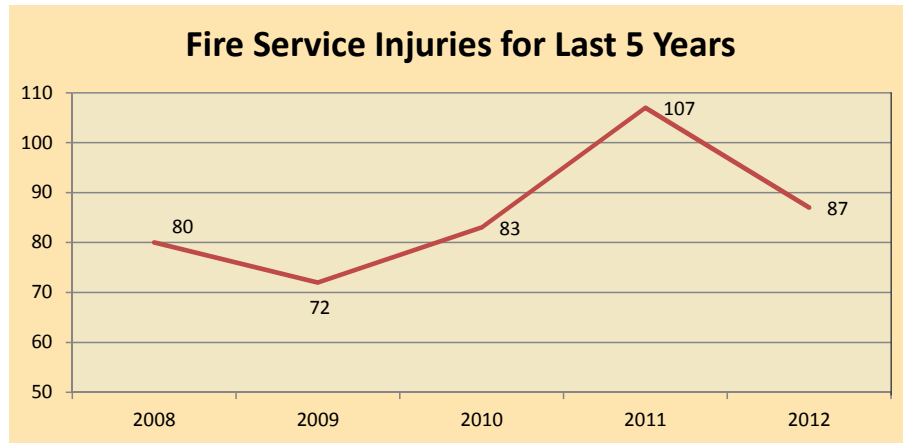


**Burley Fire Department**

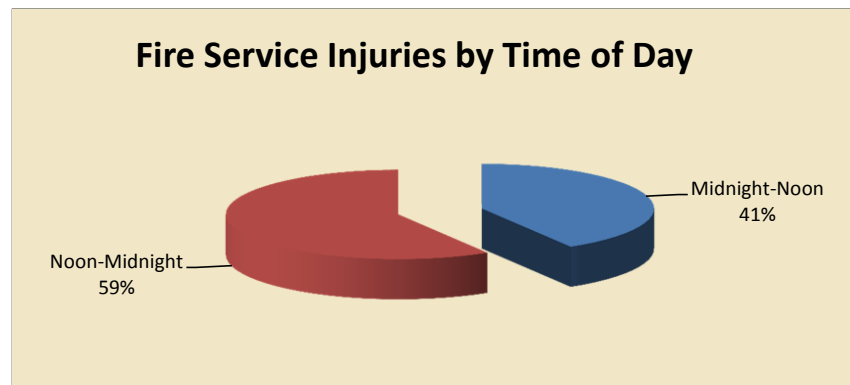


# Fire Service Casualties

## Fire Service Injuries



No fire service fatalities have been reported for the last eight years.



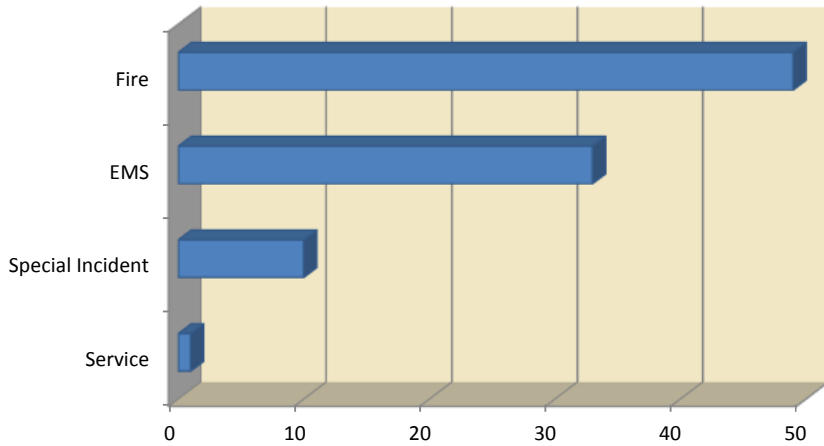
### Fire Service Injuries When Fire is Confined in Room of Origin

	Incident Count	% of Total Structure Fire Incidents	\$ Loss	% of Total Loss	Fire Svc Cas	% of Total FS Cas
Not Confined	507	53%	\$32,369,087	88.0%	24	80%
Confined	441	47%	\$4,416,695	12.0%	6	20%
<b>Total Structure Fire Incidents</b>	<b>948</b>		<b>\$36,785,782</b>		<b>30</b>	



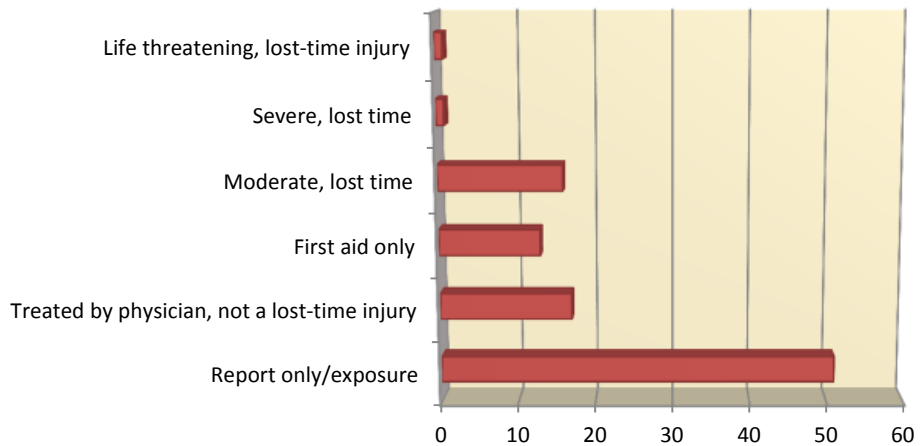
## Fire Service Injuries

Fire Service Injury Count by Incident Type

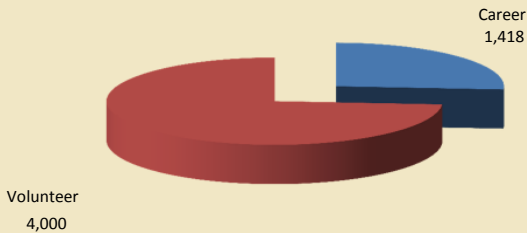


"Fire Service Casualties" are all injuries, deaths or exposures to fire service personnel including casualties occurring in conjunction with both incident responses and non-incident events such as station duties or training.

Fire Service Injuries by Severity of Injuries



Career and Volunteer Fire Service in Idaho



Halstead Firefighters thank you sign

## Training



Ice Rescue Training - Bonner County  
Photo provided by Sandpoint Fire Department



T-shirt Ceiling in Training Room at Rock Creek  
Rural Fire District  
Photo provided by Jeff Sands



Rescue Training - Bannock County  
Photo provided by Pocatello Fire Department



Propane Training - Bonner County  
Photo provided by Sandpoint Fire Department

# Fire Stations Across Idaho



Shoshone County Fire Protection District  
Station #3 - Mullan



Elk River Fire Department



St. Maries Fire Protection District  
Station #1



Eagle Fire Protection District - Station #2



Clark Fork Fire & Rescue

# The Importance of Data Quality Control in Fire Department Incident Reporting

The incident report is a legal record.

The incident report must accurately reflect the event.

The incident data is used at local, state and national levels.

The incident report is not static. Details of the report should change as more information becomes available due to further investigations by the fire department or due to a change as a direct result of the initial incident. The incident report is updated whenever the conditions or facts of the incident change.

Reporting errors are grouped into two categories: critical and warning.

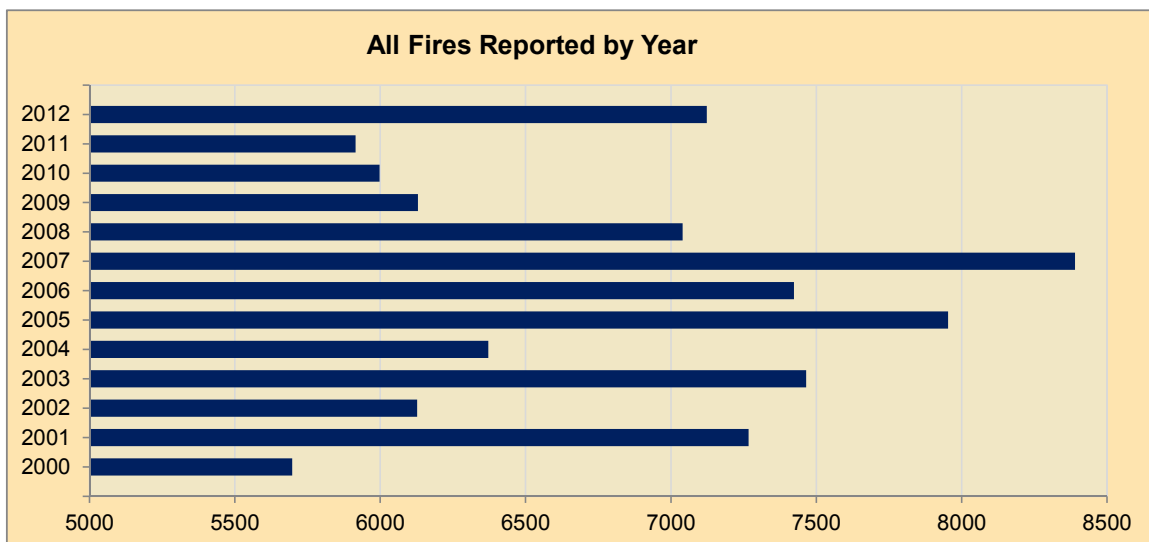
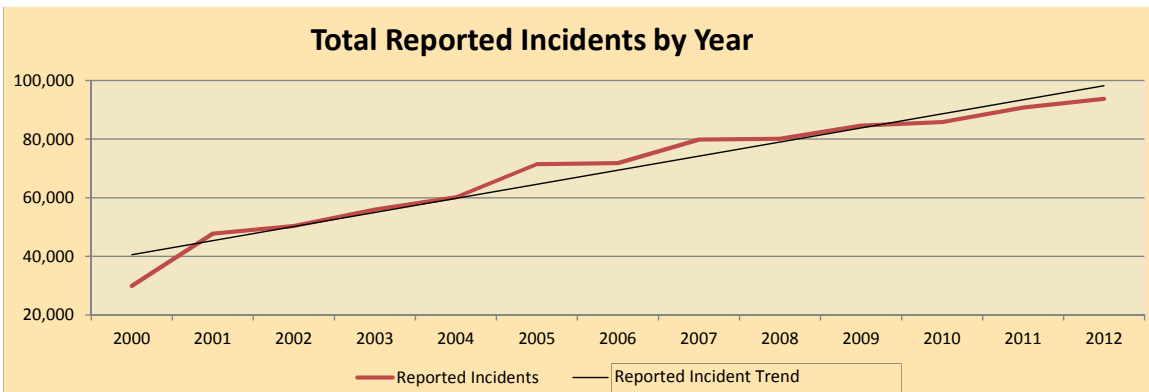
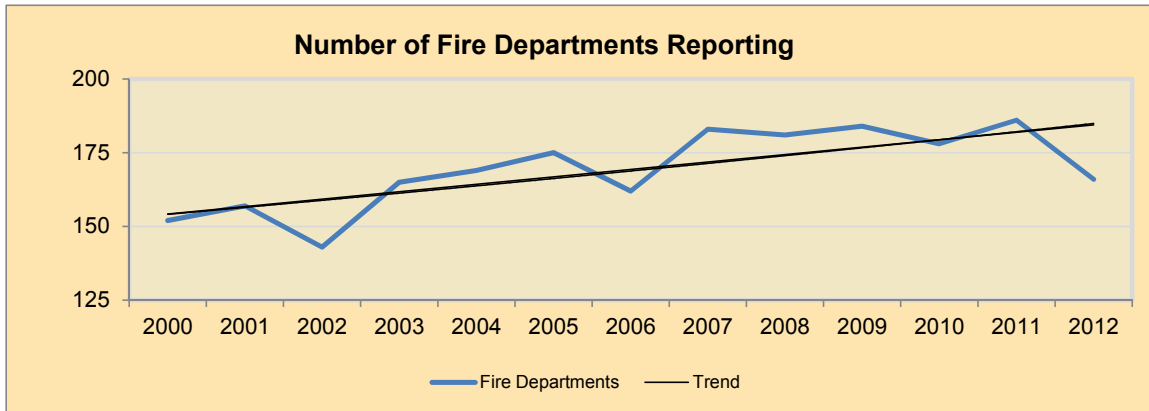
Critical Error – data is required and must be provided on the report to allow the report to be complete or valid. A report with a critical error is marked as an invalid incident.

Warning Error – data is either missing or incorrect on the report. A warning error will not prevent the report from being marked as complete or valid.

**Examples of quality issues that may not show up as errors on the system but need a recheck for correctness include:**

- “Alarm, Arrival and Last Unit Cleared” dates and times can significantly affect the response time calculation.
- “Undetermined” or “Under Investigation” reports can be revised if the cause is determined at a later date.
- Property and Content Loss are estimates and provide valuable information for determining the magnitude of the fire problem and possible financial support for fire protection. Insurance companies do not use report estimates for replacement value of property or contents.

# Reporting Trends



# Fire Stations Across Idaho



**Teton Country Fire Protection District  
Tetonia Station**



**West Pend Oreille Fire District  
Station #2**



**Troy Volunteer Fire Department**



**Coolin-Cavanaugh Bay Fire Protection District**



**Worley Fire Protection District - Rockford Station**

## Departments NOT Reporting in 2012

These departments had not submitted incidents as of May 1, 2013. Their reports may have had an effect on the statistics.

Aberdeen/Springfield Fire Dist (Bingham Co)	INL FD (Butte Co)
Ace Fire Protection Assn Unit (Cassia Co)	Island Park FPD (Fremont Co)
Albion Fire Protection Dist (Cassia Co)	Kendrick Vol FD (Latah Co)
American Falls City FD (Power Co)	Lapwai FD (Nez Perce Co)
American Falls Rural Fire Dist (Power Co)	Mackay FD (Custer Co)
Arimo FD (Bannock Co)	Meadows Valley FPD (Adams Co)
Atlanta Rural FD (Elmore Co)	Moyie Springs FD (Boundary Co)
Atomic City FD (Bingham Co)	Mullan VFD (Shoshone Co)
Bear Fire Dist (Adams Co)	Nezperce FD (Lewis Co)
Bennington FD (Bear Lake Co)	North Fork Fire Dist (Lemhi Co)
Big Canyon Fire District (Nez Perce Co)	Nounan FD (Bear Lake Co)
Bovill FD (Latah Co)	Ovid FD (Bear Lake Co)
Bruneau FPD (Owyhee Co)	Pahsimeroi FPD (Lemhi Co)
Cambridge FPD (Washington Co)	Pierce VFD (Clearwater Co)
Carrot Ridge Vol Fire Dist (Idaho Co)	Pocatello Valley FD (Bannock Co)
Castleford FD (Twin Falls Co)	Potlatch RFPD (Lemhi Co)
Centerville VFD (Boise Co)	Ridge Runner FD (Idaho Co)
Craigmont FD (Lewis Co)	Riggins City FD (Idaho Co)
Culdesac Vol FD (Nez Perce Co)	Roberts Fire Dist (Jefferson Co)
Cuprum FD (Adams Co)	Salmon Tract Rural FPD (Twin Falls Co)
Deary Rural Fire Dist (Latah Co)	Shoshone Co FPD #3 (Shoshone Co)
Deitrich Rural FD (Lincoln Co)	South Custer RFPD (Custer Co)
Downey Vol FD (Bannock Co)	South ID Timber Protective Assn (Valley Co)
Dubois City FD (Clark Co)	St Charles FD (Bear Lake Co)
Elk City VFD (Idaho Co)	St Joe Valley Fire Dist (Shoshone Co)
Evergreen Rural Fire Dist (Clearwater Co)	Star Joint FPD (Ada Co)
Ferdinand Rural/City FD (Idaho Co)	Stibnite FD (Valley Co)
Fish Haven FD (Bear Lake Co)	Stites FD (Idaho Co)
Genesee Fire Department (Latah Co)	Tensed Rural Fire Dist (Benewah Co)
Geneva FD (Bear Lake Co)	Ucon FD (Bonneville Co)
Georgetown FD (Bear Lake Co)	Upper Deer Flat FD (Canyon Co)
Grangemont Vol Fire Dist (Clearwater Co)	Upper Fords Creek RFD (Clearwater Co)
Hamer FPD (Jefferson Co)	Upper Pack River Vol Fire Dist (Bonner Co)
High Valley Fire Protection Assn (Valley Co)	West Jefferson Fire Control Dist (Jefferson Co)
Hope/East Hope FD (Bonner Co)	

FDID	DEPARTMENT NAME	POPULATION PROTECTED										HAZARDOUS CONDITION	SERVICE CALL	ASSISTED	FALSE ALARM	NATURAL DISASTER	OTHER	TOTALS			PERCENT OF TOTAL	\$ LOSS	FIRE SVC INJURY	FIRE SVC FATALITY	CIVILIAN FATALITY	CIVILIAN INJURY				
		100	200	300	400	500	600	700	800	900																				
<b>ADA COUNTY</b>																														
01100	BOISE FD	200,000	646	38	12,323	357	2,046	2,402	1,402	5	22	19,241	21%	\$1,212,697	3	2	9													
01344	EAGLE FPD	24,000	82	1	702	29	82	127	69	1	0	1,093	1%	\$718,850																
01246	KUNA RURAL FIRE DIST	25,000	85	0	770	26	129	116	37	0	0	1,163	1%	\$232,800																
01313	MERIDIAN FD	85,000	280	5	2,950	70	374	1,067	370	1	4	5,121	5%	\$1,009,190																
01342	STAR JOINT FPD												0%																	
	<b>TOTALS</b>	<b>334,000</b>	<b>1,093</b>	<b>44</b>	<b>16,745</b>	<b>482</b>	<b>2,631</b>	<b>3,712</b>	<b>1,878</b>	<b>7</b>	<b>26</b>	<b>26,618</b>	<b>28%</b>	<b>\$3,173,537</b>	<b>0</b>	<b>8</b>	<b>11</b>													
<b>ADAMS COUNTY</b>																														
03338	BEAR FIRE DIST												0%																	
03320	COUNCIL VALLEY VFD	1,000	18	0	11	0	1	2	1	0	0	33	0%	\$120,000																
03310	CUPRUM FD												0%																	
03334	INDIAN VALLEY RURAL FD	750	16	0	2	0	4	1	0	0	0	23	0%																	
03340	MEADOWS VALLEY FPD	1,200										0	0%																	
	<b>TOTALS</b>	<b>2,999</b>	<b>34</b>	<b>0</b>	<b>13</b>	<b>0</b>	<b>5</b>	<b>3</b>	<b>1</b>	<b>0</b>	<b>0</b>	<b>56</b>	<b>0%</b>	<b>\$120,000</b>	<b>0</b>	<b>0</b>	<b>0</b>													
<b>BANNOCK COUNTY</b>																														
05322	ARIMO FPD												0%																	
05207	CHUBBUCK FD	21,000	102	2	712	29	11	57	30	0	2	945	1%	\$1,147,050																
05326	DOWNNEY VOL FIRE DISTRICT	2,000										0	0%																	
05328	INKOM FD	2,500	19	0	67	1	6	8	1	1	2	105	0%	\$319,515																
05329	LAVA HOT SPRINGS VFD	1,900	18	0	0	4	3	4	2	0	0	31	0%	\$217,500																
05340	MCCAMMON FD	1,900	3	0	0	1	0	0	0	0	0	4	0%	\$25,000																
05101	POCATELLO FD	53,000	127	1	5,275	123	126	326	286	3	8	6,275	7%	\$9,890,155																
05331	POCATELLO VALLEY FD	8,500										0	0%																	
	<b>TOTALS</b>	<b>91,114</b>	<b>269</b>	<b>3</b>	<b>6,054</b>	<b>158</b>	<b>146</b>	<b>395</b>	<b>319</b>	<b>4</b>	<b>12</b>	<b>7,360</b>	<b>8%</b>	<b>\$11,599,220</b>	<b>0</b>	<b>6</b>	<b>5</b>													
<b>BEAR LAKE COUNTY</b>																														
07343	BENNINGTON FD	2,300										0	0%																	
07335	DINGLE FD	100										0	0%																	
07341	FISH HAVEN FD	100										0	0%																	
07339	GENEVA FD	100										0	0%																	
07337	GEORGETOWN FD	538										0	0%																	
07301	MONTPELIER FD	2,500	6	1	0	1	0	0	0	0	0	8	0%	\$10,000																
07344	NOUNAN FD	50										0	0%																	
07336	OVID FD	10										0	0%																	
07334	PARIS FD	476										0	0%																	
07338	PEGRAM FD	100										0	0%																	
07342	ST CHARLES FD	156										0	0%																	
	<b>TOTALS</b>	<b>6,430</b>	<b>6</b>	<b>1</b>	<b>0</b>	<b>1</b>	<b>0</b>	<b>0</b>	<b>0</b>	<b>0</b>	<b>0</b>	<b>8</b>	<b>0%</b>	<b>\$10,000</b>	<b>0</b>	<b>0</b>	<b>1</b>													
<b>BENEWAH COUNTY</b>																														
09320	EMIDA FIRE DISTRICT	400	5	0	0	0	0	0	0	0	0	5	0%																	
09330	FERWOOD RURAL FPD	1,500	9	0	0	0	0	0	0	0	0	9	0%	\$30,000																
09302	GATEWAY FPD	2,750	24	0	79	4	0	10	6	0	0	123	0%	\$405,000																
09366	ST. MARIES FPD	4,000	45	0	15	8	43	35	16	0	0	162	0%	\$37,000																
09335	TENSED FIRE DIST	200										0	0%																	
	<b>TOTALS</b>	<b>8,250</b>	<b>78</b>	<b>0</b>	<b>94</b>	<b>12</b>	<b>43</b>	<b>45</b>	<b>22</b>	<b>0</b>	<b>0</b>	<b>299</b>	<b>0%</b>	<b>\$509,000</b>	<b>0</b>	<b>0</b>	<b>1</b>													



FDID	DEPARTMENT NAME	POPULATION PROTECTED	FIRE	EXPLOSIONS	EMS	HAZARDOUS CONDITION	SERVICE CALL	ASSISTED	FALSE ALARM	NATURAL DISASTER	OTHER	TOTALS			PERCENT OF TOTAL	\$ LOSS	FIRE SVC FATALITY	FIRE SVC INJURY	CIVILIAN FATALITY	CIVILIAN INJURY
												HAZARDOUS CONDITION	SERVICE CALL	ASSISTED						
BINGHAM COUNTY																				
11303	ABERDEEN / SPRINGFIELD FIRE DIST	2,000																		
11360	ATOMIC CITY FD	32																		
11101	BLACKFOOT FD	35,000	212	3	1	61	26	65	103	0	7	478	0	0%	1%	\$1,080,100			1	1
11357	FIRTH FIRE DIST	5,000	71	0	23	7	4	17	3	0	2	127	0	0%	0%	\$76,950				
11334	FORT HALL FIRE & EMS DIST	9,000	109	0	115	11	13	17	30	0	4	299	0	0%	0%					
11355	SHELLEY RPD	8,000	32	0	73	8	6	11	14	1	1	146	0	0%	0%	\$210,000				
	<b>TOTALS</b>	<b>59,032</b>	<b>424</b>	<b>3</b>	<b>212</b>	<b>87</b>	<b>49</b>	<b>110</b>	<b>150</b>	<b>1</b>	<b>14</b>	<b>1,050</b>	<b>0</b>	<b>1%</b>	<b>\$1,367,050</b>	<b>0</b>	<b>1</b>	<b>1</b>	<b>0</b>	<b>0</b>
BLAINE COUNTY																				
13302	BELLEVUE FD	2,500	21	1	0	26	6	0	6	3	1	64	0	0%	0%	\$18,000				
13354	CAREY RURAL FPD	800	17	0	17	9	4	26	2	0	1	76	0	0%	0%	\$480,530				
13301	HAILEY FD	9,000	32	0	317	33	42	12	29	1	0	466	0	0%	0%					
13203	KETCHUM FD	5,000	13	1	5	20	21	30	61	2	0	153	0	0%	0%	\$83,651			2	
13308	SMILEY CREEK FPD	150																		
13306	SUN VALLEY FD	15,000	9	0	1	7	1	1	41	0	8	68	0	0%	0%					
13334	WOOD RIVER FIRE & RESCUE	5,000	35	0	609	6	18	61	12	0	3	744	0	1%	1%	\$150,000				
	<b>TOTALS</b>	<b>37,450</b>	<b>127</b>	<b>2</b>	<b>949</b>	<b>101</b>	<b>92</b>	<b>130</b>	<b>151</b>	<b>6</b>	<b>13</b>	<b>1,571</b>	<b>0</b>	<b>2%</b>	<b>\$732,181</b>	<b>0</b>	<b>2</b>	<b>0</b>	<b>0</b>	<b>0</b>
BOISE COUNTY																				
15309	CENTERVILLE VFD	500																		
15330	CLEAR CREEK VFD	500	5	0	1	0	0	0	0	0	0	6	0	0%	0%					
15311	GARDEN VALLEY RURAL FD	2,800	17	0	121	3	10	34	0	0	0	185	0	0%	0%	\$70,000				
15345	HORSESHOE BEND FIRE DIST	1,750	12	0	1	13	1	1	0	0	1	29	0	0%	0%	\$250,000				
15324	IDAHO CITY FD	2,000	9	0	5	1	0	2	0	0	0	17	0	0%	0%	\$24,781				
15342	LOWMAN VOL FIRE DIST, INC.	200	4	0	1	0	0	0	0	0	0	5	0	0%	0%					
15301	PLACERVILLE FIRE DIST	300	3	0	3	0	1	0	0	0	0	7	0	0%	0%					
15313	ROBIE CREEK VFD	450	2	0	1	1	0	0	1	0	0	5	0	0%	0%					
15335	VALLEY OF THE PINES VFD	650	10	0	4	1	1	2	0	0	12	30	0	0%	0%					
15340	WILDERNESS RANCH FPD	2,000	11	0	63	0	3	12	0	0	0	89	0	0%	0%					
	<b>TOTALS</b>	<b>11,150</b>	<b>73</b>	<b>0</b>	<b>200</b>	<b>19</b>	<b>16</b>	<b>51</b>	<b>1</b>	<b>1</b>	<b>13</b>	<b>373</b>	<b>0</b>	<b>0%</b>	<b>\$344,781</b>	<b>0</b>	<b>0</b>	<b>0</b>	<b>0</b>	<b>0</b>
BONNER COUNTY																				
17314	CLARK FORK FIRE & RESCUE	2,600	0	0	15	4	0	2	0	0	0	21	0	0%	0%	\$1,000				
17344	COOLIN-CAVANAUGH BAY FPD	350	1	0	4	2	7	3	2	2	0	21	0	0%	0%					
17316	HOPE-EAST HOPE VOL FIRE DIST	700										0	0	0%	0%					
17339	NORTH OF THE NARROWS FD	500	1	0	0	0	3	2	0	0	0	6	0	0%	0%					
17333	NORTHSIDE FIRE DIST	10,000	49	0	4	167	17	69	15	0	0	321	0	0%	0%					
17341	SAGLE FIRE DIST	8,500	56	0	496	47	47	157	41	0	1	845	1	1%	0%					
17360	SAM OWEN FIRE DIST	300	10	0	46	17	1	6	0	0	0	80	0	0%	0%					
17201	SANDPOINT FD	9,000	32	1	690	87	53	147	69	1	4	1,084	1	1%	1%	\$406,500			1	
17349	SCHWEITZER FIRE DIST	1,000	0	1	55	6	1	3	6	0	0	72	0	0%	0%					
17337	WEST PEND OREILLE FIRE DIST	5,000	47	1	216	85	72	95	27	3	0	546	1	1%	1%	\$411,550				
17319	WEST PRIEST LAKE FIRE DIST	700	3	0	17	4	1	4	1	2	1	33	0	0%	0%	\$230,250				
17335	WESTSIDE FPD	5,000	13	1	85	9	6	24	1	0	1	140	0	0%	0%	\$225,100				
	<b>TOTALS</b>	<b>43,650</b>	<b>212</b>	<b>4</b>	<b>1,628</b>	<b>428</b>	<b>208</b>	<b>512</b>	<b>162</b>	<b>8</b>	<b>7</b>	<b>3,169</b>	<b>0</b>	<b>3%</b>	<b>\$1,274,400</b>	<b>0</b>	<b>1</b>	<b>0</b>	<b>0</b>	<b>0</b>

FDID	DEPARTMENT NAME	POPULATION PROTECTED	FIRE	EXPLOSIONS	EMS	HAZARDOUS CONDITION	SERVICE CALL	ASSISTED	FALSE ALARM	NATURAL DISASTER	OTHER	TOTALS		PERCENT OF TOTAL	\$ LOSS	FIRE SVC INJURY	FIRE SVC FATALITY	CIVILIAN INJURY	CIVILIAN FATALITY
<b>BONNEVILLE COUNTY</b>																			
19315	AMMON FD	14,000	21	0	0	0	19	2	20	68	2	3	135	0%	\$50,065				
19340	GREATER SWAN VALLEY FPD #2	80,000	16	0	92	1	1	1	23	2	0	0	135	0%	\$3,000				
19101	IDAHO FALLS FD	1,000	311	6	2,212	160	23	322	372	1	9	3,416	4%	\$3,545,320					1
19317	UCON FD	1,025										0	0%						
	<b>TOTALS</b>	<b>96,025</b>	<b>348</b>	<b>6</b>	<b>2,304</b>	<b>180</b>	<b>26</b>	<b>365</b>	<b>442</b>	<b>3</b>	<b>12</b>	<b>3,686</b>	<b>4%</b>	<b>\$3,598,385</b>	<b>0</b>	<b>2</b>	<b>0</b>	<b>2</b>	<b>1</b>
<b>BOUNDARY COUNTY</b>																			
21301	BONNERS FERRY FD	3,000	4	0	7	5	2	4	10	1	1	34	0%						
21333	CURLEY CREEK VFD	300	1	0	1	0	3	21	1	0	0	27	0%	\$5,500					1
21344	HALL MOUNTAIN VOL FIRE ASSN, INC	1,500	0	0	4	0	1	1	0	0	0	6	0%						
21315	MOYIE SPRINGS FD	668	4	0	2	3	0	23	0	0	0	32	0%	\$500					
21341	NORTH BENCH FD	2,000	7	1	32	11	1	8	0	0	0	60	0%	\$46,000					
21348	PARADISE VALLEY FIRE DIST	2,600	0	0	0	0	0	0	0	0	0	0	0%						
21346	SOUTH BOUNDARY FPD	2,700	16	0	34	29	2	4	2	2	0	89	0%	\$52,000					
	<b>TOTALS</b>	<b>12,768</b>	<b>32</b>	<b>1</b>	<b>80</b>	<b>48</b>	<b>9</b>	<b>61</b>	<b>13</b>	<b>3</b>	<b>1</b>	<b>248</b>	<b>0%</b>	<b>\$104,000</b>	<b>0</b>	<b>0</b>	<b>1</b>	<b>0</b>	<b>0</b>
<b>BUTTE COUNTY</b>																			
23316	ARCO FD	1,100	13	0	5	1	0	1	1	0	0	21	0%						
23320	INL FD											0	0%						
23341	LOST RIVER FPD	2,000	23	0	0	1	1	4	0	0	0	29	0%	\$21,000					
	<b>TOTALS</b>	<b>3,100</b>	<b>36</b>	<b>0</b>	<b>5</b>	<b>2</b>	<b>1</b>	<b>5</b>	<b>1</b>	<b>0</b>	<b>0</b>	<b>50</b>	<b>0%</b>	<b>\$21,000</b>	<b>0</b>	<b>0</b>	<b>0</b>	<b>0</b>	<b>0</b>
<b>CAMAS COUNTY</b>																			
25301	CITY OF FAIRFIELD FD	1,013	6	0	0	0	0	0	0	0	0	6	0%						
25340	WEST MAGIC FIRE DIST	120	2	0	2	0	0	0	0	0	0	4	0%						
	<b>TOTALS</b>	<b>1,133</b>	<b>8</b>	<b>0</b>	<b>2</b>	<b>0</b>	<b>0</b>	<b>0</b>	<b>0</b>	<b>0</b>	<b>0</b>	<b>10</b>	<b>0%</b>	<b>\$0</b>	<b>0</b>	<b>0</b>	<b>0</b>	<b>0</b>	<b>0</b>
<b>CANYON COUNTY</b>																			
27211	CALDWELL CITY FPD	55,000	215	4	2,432	86	364	673	201	1	11	3,987	4%	\$578,540					26
27344	MELBA RURAL FPD	3,000	67	0	51	2	26	17	5	0	0	168	0%	\$47,250					
27336	MIDDLETON RURAL FPD	20,100	164	0	569	15	112	253	26	0	6	1,145	1%	\$225,575					1
27101	NAMPA FD	100,662	299	19	5,197	116	1,166	888	451	1	11	8,148	9%	\$1,140,236					8
27338	PARMA FD	10,000	9	0	181	0	0	5	0	0	0	195	0%	\$312,000					5
27109	SOUTHWEST HAZ MAT REGIONAL TEAM	7,600	0	0	0	6	0	0	0	0	0	6	0%						
27339	UPPER DEER FLAT FD											0	0%						
27307	WILDER RURAL FPD	5,000	51	0	140	6	13	84	4	2	1	301	0%	\$3,130,000					
	<b>TOTALS</b>	<b>201,362</b>	<b>805</b>	<b>23</b>	<b>8,570</b>	<b>231</b>	<b>1,681</b>	<b>1,920</b>	<b>687</b>	<b>4</b>	<b>29</b>	<b>13,950</b>	<b>15%</b>	<b>\$5,433,601</b>	<b>0</b>	<b>35</b>	<b>1</b>	<b>15</b>	<b>1</b>
<b>CARIBOU COUNTY</b>																			
29306	BANCROFT FD	350	4	0	0	0	0	0	0	0	0	4	0%						
29305	CARIBOU COUNTY FD	4,800	22	0	2	0	2	0	1	0	1	28	0%	\$0					1
29309	GRACE FD	1,000	14	0	0	2	0	1	0	0	0	17	0%	\$1,500					1
29301	SODA SPRINGS FD	3,200	9	0	0	2	0	1	0	0	0	12	0%	\$106,500					1
	<b>TOTALS</b>	<b>9,350</b>	<b>49</b>	<b>0</b>	<b>2</b>	<b>4</b>	<b>2</b>	<b>2</b>	<b>1</b>	<b>0</b>	<b>1</b>	<b>61</b>	<b>0%</b>	<b>\$108,000</b>	<b>0</b>	<b>2</b>	<b>0</b>	<b>2</b>	<b>1</b>

FDID	DEPARTMENT NAME	POPULATION PROTECTED	FIRE	EXPLOSIONS	EMS	HAZARDOUS CONDITION	SERVICE CALL	ASSISTED	FALSE ALARM	NATURAL DISASTER	OTHER	TOTALS			PERCENT OF TOTAL	\$ LOSS	FIRE SVC INJURY	FIRE SVC FATALITY	CIVILIAN FATALITY	CIVILIAN INJURY
												FIRE	EXPLOSIONS	HAZARDOUS CONDITION						
CASSIA COUNTY																				
31343	ACE FIRE PROTECTION ASSN UNIT	500													0	0%				
31342	ALBION FPD	305													0	0%				
31201	BURLEY CITY FDN/ CASSIA FIRE DIST	20,500	67	0	315	13	3	65	38	1	0	502	1%	\$533,350	1					
31334	DECLO FD	338	36	0	2	3	0	3	3	0	0	47	0%	\$21,075						
31340	OAKLEY FPD	1,400	19	0	3	1	0	3	1	0	0	27	0%	\$656,353						
31338	RAFT RIVER FPD	1,148	3	0	0	0	0	1	0	0	0	4	0%	\$35,000						
	<b>TOTALS</b>	<b>24,191</b>	<b>125</b>	<b>0</b>	<b>320</b>	<b>17</b>	<b>3</b>	<b>72</b>	<b>42</b>	<b>1</b>	<b>0</b>	<b>580</b>	<b>1%</b>	<b>\$1,245,778</b>	<b>0</b>	<b>1</b>	<b>0</b>	<b>0</b>	<b>0</b>	
CLARK COUNTY																				
33329	DUBOIS CITY FD	1,000													0	0%	\$0			
	<b>TOTALS</b>	<b>1,000</b>	<b>0</b>	<b>0</b>	<b>0</b>	<b>0</b>	<b>0</b>	<b>0</b>	<b>0</b>	<b>0</b>	<b>0</b>	<b>0</b>	<b>0%</b>	<b>\$0</b>	<b>0</b>	<b>0</b>	<b>0</b>	<b>0</b>	<b>0</b>	
CLEARWATER COUNTY																				
88172	CLEARWATER POTLATCH TPA	10,000	42	0	0	0	0	0	0	0	0	42	0%	\$3,250						
35301	ELK RIVER FD	125	1	0	2	0	0	0	0	0	0	3	0%							
35341	EVERGREEN RURAL FIRE DIST	200										0	0%							
35330	GRANGEMONT VOL FIRE DIST	180										0	0%							
35303	OROFINO FD	3,247	1	0	1	0	1	0	0	0	0	3	0%							
35309	PIERCE VFD	700										0	0%							
35338	SUNNYSIDE RURAL FIRE DIST	400	0	0	0	0	2	0	0	0	0	2	0%							
35305	TWIN RIDGE RURAL FD	500	1	0	0	0	0	0	0	0	0	1	0%							
35344	UPPER FORDS CREEK RURAL FD	200										0	0%							
35312	WEIPPE FD	1,300	22	0	4	1	0	10	2	0	0	39	0%	\$11,000						
	<b>TOTALS</b>	<b>16,852</b>	<b>67</b>	<b>0</b>	<b>7</b>	<b>1</b>	<b>1</b>	<b>12</b>	<b>2</b>	<b>0</b>	<b>0</b>	<b>90</b>	<b>0%</b>	<b>\$14,250</b>	<b>0</b>	<b>0</b>	<b>0</b>	<b>0</b>	<b>0</b>	
CUSTER COUNTY																				
37302	CHALLIS VFD		10	0	2	0	0	0	0	0	0	12	0%	\$200						
37305	MACKAY FD	566										0	0%							
37334	NORTH CUSTER FD	2,000	15	0	18	0	0	9	0	0	0	42	0%							
37301	SAWTOOTH VALLEY RURAL FD	400	4	0	8	4	0	6	0	0	0	22	0%	\$73,000						
37354	SOUTH CUSTER RURAL FPD	1,400										0	0%							
	<b>TOTALS</b>	<b>4,366</b>	<b>19</b>	<b>0</b>	<b>26</b>	<b>4</b>	<b>0</b>	<b>15</b>	<b>0</b>	<b>0</b>	<b>0</b>	<b>76</b>	<b>0%</b>	<b>\$73,200</b>	<b>0</b>	<b>0</b>	<b>0</b>	<b>0</b>	<b>0</b>	
ELMORE COUNTY																				
39338	ATLANTA RURAL FD	40										0	0%							
39303	GLENN'S FERRY FD	1,900	1	0	3	1	1	1	4	0	0	11	0%							
39336	KING HILL FPD	2,000	30	0	8	2	0	12	1	0	0	53	0%	\$308,500						
39334	MOUNTAIN HOME RURAL FPD	4,000	37	0	0	4	4	3	9	0	1	58	0%	\$423,700						
39301	MOUNTAIN HOME VFD	14,000	32	1	2	8	8	7	21	0	0	79	0%	\$283,050						
39309	OASIS VFD	175	13	0	0	0	0	0	0	0	0	13	0%							
39305	PRAIRIE GRU & FIRE											0	0%							
	<b>TOTALS</b>	<b>22,115</b>	<b>113</b>	<b>1</b>	<b>13</b>	<b>15</b>	<b>13</b>	<b>23</b>	<b>35</b>	<b>0</b>	<b>1</b>	<b>214</b>	<b>0%</b>	<b>\$1,015,250</b>	<b>0</b>	<b>0</b>	<b>0</b>	<b>0</b>	<b>0</b>	
FRANKLIN COUNTY																				
41301	FRANKLIN COUNTY FIRE DIST	13,000	61	0	8	8	32	10	24	6	0	141	0%	\$1,757,970						
	<b>TOTALS</b>	<b>13,000</b>	<b>61</b>	<b>0</b>	<b>8</b>	<b>8</b>	<b>32</b>	<b>10</b>	<b>24</b>	<b>6</b>	<b>0</b>	<b>141</b>	<b>0%</b>	<b>\$1,757,970</b>	<b>0</b>	<b>0</b>	<b>0</b>	<b>0</b>	<b>0</b>	

FDID	DEPARTMENT NAME	POPULATION PROTECTED	FIRE	EXPLOSIONS	EMS	HAZARDOUS CONDITION	SERVICE CALL	ASSISTED	FALSE ALARM	NATURAL DISASTER	OTHER	TOTALS	PERCENT OF TOTAL	\$ LOSS	FIRE SVC FATALITY	FIRE SVC INJURY	CIVILIAN FATALITY	CIVILIAN INJURY	
<b>FREMONT COUNTY</b>																			
43334	ISLAND PARK FPD	10,000										0	0%						
43336	NORTH FREMONT FIRE DIST, INC	3,000	25	0	1	4	3	0	2	0	0	35	0%						
43338	SOUTH FREMONT FD	7,500	61	4	3	6	0	15	4	0	0	93	0%	\$388,800					
	<b>TOTALS</b>	<b>20,500</b>	<b>86</b>	<b>4</b>	<b>4</b>	<b>10</b>	<b>3</b>	<b>15</b>	<b>6</b>	<b>0</b>	<b>0</b>	<b>128</b>	<b>0%</b>	<b>\$388,800</b>	<b>0</b>	<b>0</b>	<b>0</b>	<b>0</b>	<b>0</b>
<b>GEM COUNTY</b>																			
45301	EMMETT FD	6,800	30	1	27	23	22	31	18	0	0	152	0%	\$158,200					
45334	GEM COUNTY FPD #1	10,000	108	0	31	11	7	21	10	0	0	188	0%	\$287,750					
45339	GEM COUNTY FPD #2	1,500	15	0	8	0	1	15	2	1	0	42	0%						
	<b>TOTALS</b>	<b>18,300</b>	<b>153</b>	<b>1</b>	<b>66</b>	<b>34</b>	<b>30</b>	<b>67</b>	<b>30</b>	<b>1</b>	<b>0</b>	<b>382</b>	<b>0%</b>	<b>\$445,950</b>	<b>0</b>	<b>0</b>	<b>0</b>	<b>0</b>	<b>0</b>
<b>GOODING COUNTY</b>																			
47341	BLISS FIRE DIST	750	7	0	12	0	0	0	0	0	0	19	0%						
47301	GOODING FD	7,000	56	0	92	22	7	33	21	4	1	236	0%	\$244,800					
47323	HAGERMAN FPD	2,500	47	0	34	3	5	15	0	1	1	106	0%	\$165,400					
47335	WENDELL CITY FD	3,500	6	0	19	12	2	8	15	0	0	62	0%	\$1,653,865					
47303	WENDELL RURAL FIRE DIST	3,500	83	1	42	19	6	22	1	1	0	175	0%	\$52,000					
	<b>TOTALS</b>	<b>17,250</b>	<b>199</b>	<b>1</b>	<b>199</b>	<b>56</b>	<b>20</b>	<b>78</b>	<b>37</b>	<b>6</b>	<b>2</b>	<b>598</b>	<b>1%</b>	<b>\$2,116,065</b>	<b>0</b>	<b>0</b>	<b>0</b>	<b>0</b>	<b>0</b>
<b>IDAHO COUNTY</b>																			
49352	BPC VOL RFD, INC.	280	4	0	0	0	0	0	0	0	1	5	0%	\$100,000					
49340	CARROT RIDGE VOL FIRE DIST	200										0	0%						
49310	COTTONWOOD VFD	1,000										0	0%						
49335	COTTONWOOD RURAL FD	600	1	0	0	0	0	0	0	0	0	1	0%	\$2,000					
49316	ELK CITY VFD	400										0	0%						
49327	FERDINAND RURAL/CITY FD	150										0	0%						
49375	GLENWOOD/CARBEL VOL FIRE DIST	500	1	0	0	0	0	0	0	0	0	1	0%						
49308	GRANGEVILLE CITY FD	3,500	11	0	1	2	0	0	0	0	0	14	0%	\$17,100					
49334	GRANGEVILLE RURAL FD		17	0	0	1	0	1	1	0	0	20	0%	\$500					
49362	HARPSTER FPD	300	2	0	0	0	0	2	0	0	0	4	0%						
49330	KOOSKIA FD	3,000	6	0	2	2	0	3	0	0	0	13	0%	\$246,200					
49336	RIDGE RUNNER FD	800										0	0%						
49350	RIGGINS CITY FD	852										0	0%						
49338	SALMON RIVER RURAL FD	1,800	11	0	0	1	2	1	0	0	0	15	0%	\$440,000					
49370	SESECH MEADOWS RURAL FIRE DIST	200	2	0	0	0	0	0	0	0	0	2	0%						
49329	STITES FD											0	0%						
49311	WHITE BIRD FD	500	5	0	0	0	7	2	1	0	0	15	0%	\$10,000					
	<b>TOTALS</b>	<b>14,082</b>	<b>60</b>	<b>0</b>	<b>3</b>	<b>5</b>	<b>8</b>	<b>10</b>	<b>3</b>	<b>1</b>	<b>0</b>	<b>90</b>	<b>0%</b>	<b>\$815,800</b>	<b>0</b>	<b>0</b>	<b>0</b>	<b>0</b>	<b>1</b>
<b>JEFFERSON COUNTY</b>																			
51334	CENTRAL FIRE DIST	20,000	83	1	3	19	87	19	16	0	0	228	0%	\$1,116,475					
51337	HAMER FPD	86											0%						
51314	ROBERTS FIRE DIST	647											0%						
51340	WEST JEFFERSON FIRE CONTROL DIST	1,200											0%						
	<b>TOTALS</b>	<b>21,933</b>	<b>83</b>	<b>1</b>	<b>3</b>	<b>19</b>	<b>87</b>	<b>19</b>	<b>16</b>	<b>0</b>	<b>0</b>	<b>228</b>	<b>0%</b>	<b>\$1,116,475</b>	<b>0</b>	<b>1</b>	<b>0</b>	<b>0</b>	<b>2</b>

FDID	DEPARTMENT NAME	POPULATION PROTECTED	FIRE	EXPLOSIONS	EMS	HAZARDOUS CONDITION	SERVICE CALL	ASSISTED	FALSE ALARM	NATURAL DISASTER	OTHER	TOTALS	PERCENT OF TOTAL	\$ LOSS	FIRE SVC FATALITY	FIRE SVC INJURY	CIVILIAN FATALITY	CIVILIAN INJURY
JEROME COUNTY																		
53353	FIRST SEGREGATION FIRE DIST	2,500	43	0	44	17	3	29	6	0	0	142	0%	\$9,700				
53201	JEROME CITY FD	9,700	63	2	776	25	33	43	53	0	0	995	1%	\$739,043				1
53333	JEROME RURAL FIRE DIST #1	10,000	139	1	15	102	5	48	8	0	1	319	0%	\$548,500				
TOTALS		22,200	245	3	835	144	41	120	67	0	1	1,456	2%	\$1,297,243	0	0	0	1
KOOTENAI COUNTY																		
55201	COEUR D'ALENE FD	46,000	136	7	5,573	97	335	616	275	0	1	7,040	8%	\$909,823			3	3
55360	EAST SIDE FPD	1,800	11	0	54	9	9	23	20	0	0	126	0%	\$3,270,000				
55346	HAUSER LAKE FPD	2,200	12	0	117	2	15	28	6	0	0	180	0%					
55234	KOOTENAI CO FIRE & RESCUE	45,000	159	3	3,717	91	347	647	184	4	5	5,157	5%	\$1,745,500			15	0
55209	KOOTENAI CO REGION 1 HAZMAT TEAM	141,132	0	0	0	2	2	0	0	0	0	4	0%					4
55354	MICA-KIDD ISLAND FPD	1,700	5	0	48	0	12	15	4	1	0	85	0%	\$575,100				
55342	NORTHERN LAKES FPD	37,500	103	0	2,212	33	226	652	71	0	0	3,297	4%	\$210,000			9	1
55338	SPIRIT LAKE FPD	8,250	61	4	299	16	50	106	17	0	3	556	1%	\$309,800			2	1
55352	TIMBERLAKE FPD	8,000	38	0	320	15	30	89	25	0	0	517	1%					
55336	WORLEY FPD	2,500	22	0	109	7	4	59	4	0	0	205	0%					
TOTALS		294,082	547	14	12,449	272	1,030	2,235	606	5	9	17,167	18%	\$7,020,223	0	27	3	5
LATAH COUNTY																		
57309	BOVILL FD	350										0	0%					
57342	DEARY RURAL FIRE DIST	2,000										0	0%					
57338	GENESEE FD	2,100										0	0%					
57307	JULIAETTA VFD	625	11	0	51	0	1	6	3	0	0	72	0%	\$99,575				1
57306	KENDRICK VFD	400										0	0%					
57301	MOSCOW CITY FD	25,000	85	4	465	71	25	48	163	2	1	864	1%	\$643,755				
57334	MOSCOW RURAL DISTRICT	10,000	33	0	90	8	1	20	7	0	0	159	0%	\$361,840				1
57336	POTLATCH RURAL FPD	791										0	0%					
57340	TROY RURAL FD	2,500	16	0	12	0	2	2	1	1	0	34	0%	\$275,000				
57304	TROY VFD		3	0	3	3	3	0	0	0	0	12	0%					
TOTALS		43,766	148	4	621	82	32	76	174	3	1	1,141	1%	\$1,380,170	0	0	1	1
LEMHI COUNTY																		
59310	ELK BEND FPD	300	13	0	4	1	4	5	0	0	0	27	0%	\$1,500				
59315	LEADORE FD	7,500	6	0	1	0	0	2	0	0	0	9	0%	\$2,300				
59330	LEMHI COUNTY FPD #1	4,000	64	0	5	3	0	6	7	0	0	85	0%	\$621,250			1	1
59333	NORTH FORK FIRE DIST	250										0	0%					
59344	PAHSIMEROI VFD	50										0	0%					
59351	WILLIAMS LAKE VFD	150										0	0%					
TOTALS		12,250	83	0	10	4	4	13	7	0	0	121	0%	\$625,050	0	1	0	1
LEWIS COUNTY																		
61304	CRAIGMONT FD	500										0	0%					
61334	KAMIAH VFD	5,400	11	0	6	12	3	6	0	0	0	38	0%	\$175,000				
61310	NEZPERCE FD	1,500										0	0%					
61308	WINCHESTER VFD	600	3	1	1	5	0	2	0	0	0	12	0%					
61312	WINCHESTER RFD											0	NO ACTIVITY					
TOTALS		8,000	14	1	7	17	3	8	0	0	0	50	0%	\$175,000	0	0	0	0

FDID	DEPARTMENT NAME	POPULATION PROTECTED	FIRE	EXPLOSIONS	EMS	HAZARDOUS CONDITION	SERVICE CALL	ASSISTED	FALSE ALARM	NATURAL DISASTER	OTHER	TOTALS	PERCENT OF TOTAL	\$ LOSS	FIRE SVC FATALITY	FIRE SVC INJURY	CIVILIAN FATALITY	CIVILIAN INJURY	
<b>LINCOLN COUNTY</b>																			
63306	DIETRICH RURAL FD	500										0	0%						
63308	RICHFIELD FPD	800	14	0	4	3	0	6	1	0	0	28	0%						
63301	SHOSHONE CITY/RURAL FIRE DIST	600										0	0%						
	<b>TOTALS</b>	<b>1,900</b>	<b>14</b>	<b>0</b>	<b>4</b>	<b>3</b>	<b>0</b>	<b>6</b>	<b>1</b>	<b>0</b>	<b>0</b>	<b>28</b>	<b>0%</b>	<b>\$0</b>	<b>0</b>	<b>0</b>	<b>0</b>	<b>0</b>	<b>0</b>
<b>MADISON COUNTY</b>																			
65234	MADISON FD	38,440	148	1	58	50	15	149	105	1	0	527	1%	\$621,875					
	<b>TOTALS</b>	<b>38,440</b>	<b>148</b>	<b>1</b>	<b>58</b>	<b>50</b>	<b>15</b>	<b>149</b>	<b>105</b>	<b>1</b>	<b>0</b>	<b>527</b>	<b>1%</b>	<b>\$621,875</b>	<b>0</b>	<b>0</b>	<b>0</b>	<b>0</b>	<b>0</b>
<b>MINIDOKA COUNTY</b>																			
67336	MINIDOKA COUNTY FPD	10,000	157	1	252	8	22	30	21	0	0	491	1%	\$1,748,890					
67301	RUPERT CITY FIRE & RESCUE	5,640	22	0	104	13	1	11	11	0	0	162	0%	\$28,175					2
67334	WEST END FPD	8,800	97	0	173	12	2	4	9	3	0	300	0%	\$1,361,200					
	<b>TOTALS</b>	<b>24,440</b>	<b>276</b>	<b>1</b>	<b>529</b>	<b>33</b>	<b>25</b>	<b>45</b>	<b>41</b>	<b>3</b>	<b>0</b>	<b>953</b>	<b>1%</b>	<b>\$3,138,265</b>	<b>0</b>	<b>2</b>	<b>0</b>	<b>0</b>	<b>0</b>
<b>NEZ PERCE COUNTY</b>																			
69333	BIG CANYON FIRE DIST	500										0	0%						
69311	CULDESAC VFD	350										0	0%						
69306	LAPWAI FD	1,200										0	0%						
69201	LEWISTON FD	37,000	82	5	1,845	78	61	171	216	1	2	2,461	3%	\$1,285,090					2
69209	LEWISTON HAZ MAT TEAM		0	0	0	1	0	0	0	0	0	1	0%						1
69344	NEZ PERCE CO FD	6,000	27	0	0	0	0	41	0	0	0	68	0%	\$93,200					
69345	WHEATLAND FPD	275	0	0	0	0	1	3	1	0	0	5	0%						
	<b>TOTALS</b>	<b>45,325</b>	<b>109</b>	<b>5</b>	<b>1,845</b>	<b>79</b>	<b>62</b>	<b>215</b>	<b>217</b>	<b>1</b>	<b>2</b>	<b>2,535</b>	<b>3%</b>	<b>\$1,378,290</b>	<b>0</b>	<b>2</b>	<b>0</b>	<b>0</b>	<b>1</b>
<b>ONEIDA COUNTY</b>																			
71301	ONEIDA COUNTY VFD/MALAD FD	6,000	12	0	0	0	0	1	0	0	0	13	0%						
	<b>TOTALS</b>	<b>6,000</b>	<b>12</b>	<b>0</b>	<b>0</b>	<b>0</b>	<b>0</b>	<b>1</b>	<b>0</b>	<b>0</b>	<b>0</b>	<b>13</b>	<b>0%</b>	<b>\$0</b>	<b>0</b>	<b>0</b>	<b>0</b>	<b>0</b>	<b>0</b>
<b>OWYHEE COUNTY</b>																			
73340	BRUNEAU FPD	200										0	0%						
73338	GRAND VIEW FPD	3,000	2	0	5	0	0	2	0	0	0	9	0%	\$2,500					
73334	HOMEDALE RFPD	5,500	28	0	7	5	0	19	3	0	1	63	0%	\$195,500					
73336	MARSING CITY/RURAL FPD	20,000	50	1	22	3	0	8	7	0	0	91	0%	\$250					
73342	MURPHY-REYNOLDS-WILSON FPD	1,200	13	0	1	1	1	2	0	0	0	18	0%	\$109,096					
73320	SILVER CITY FIRE & RESCUE, INC.	30	0	0	5	0	0	0	0	0	0	5	0%						
	<b>TOTALS</b>	<b>29,930</b>	<b>93</b>	<b>1</b>	<b>40</b>	<b>9</b>	<b>1</b>	<b>31</b>	<b>10</b>	<b>0</b>	<b>1</b>	<b>186</b>	<b>0%</b>	<b>\$307,346</b>	<b>0</b>	<b>0</b>	<b>0</b>	<b>0</b>	<b>0</b>
<b>PAYETTE COUNTY</b>																			
75302	FRUITLAND FD	4,684	38	0	7	7	5	6	6	0	0	69	0%	\$12,550					
75336	NEW PLYMOUTH RURAL FIRE DIST	2,500	60	0	6	8	15	20	1	0	1	111	0%	\$618,800					
75301	PAYETTE CITY FD	8,200	29	0	296	21	158	16	23	2	0	545	1%	\$71,500					
75334	PAYETTE RURAL FD	8,000	38	0	27	6	20	19	1	0	0	111	0%	\$216,400					1
	<b>TOTALS</b>	<b>23,384</b>	<b>165</b>	<b>0</b>	<b>336</b>	<b>42</b>	<b>198</b>	<b>61</b>	<b>31</b>	<b>2</b>	<b>1</b>	<b>836</b>	<b>1%</b>	<b>\$919,250</b>	<b>0</b>	<b>0</b>	<b>0</b>	<b>0</b>	<b>1</b>

FDID	DEPARTMENT NAME	POPULATION PROTECTED	FIRE	EXPLOSIONS	EMS	HAZARDOUS CONDITION	SERVICE CALL	ASSISTED	FALSE ALARM	NATURAL DISASTER	OTHER	TOTALS	PERCENT OF TOTAL	\$ LOSS	FIRE SVC FATALITY	FIRE SVC INJURY	CIVILIAN FATALITY	CIVILIAN INJURY	
<b>POWER COUNTY</b>																			
77302	AMERICAN FALLS CITY FD	6,200										0	0%						
77330	AMERICAN FALLS RURAL FPD	50										0	0%						
77306	ROCKLAND RURAL FIRE DIST	1,000	7	0	0	0	1	3	2	0	0	13	0%	\$3,500					
<b>TOTALS</b>		<b>7,250</b>	<b>7</b>	<b>0</b>	<b>0</b>	<b>0</b>	<b>1</b>	<b>3</b>	<b>2</b>	<b>0</b>	<b>0</b>	<b>13</b>	<b>0%</b>	<b>\$3,500</b>	<b>0</b>	<b>0</b>	<b>0</b>	<b>0</b>	<b>0</b>
<b>SHOSHONE COUNTY</b>																			
79304	MULLAN VOL FD	900										0	0%						
79305	PRICHARD/MURRAY VOL FD	400	5	0	47	1	4	8	0	0	0	65	1%						2
79236	SHOSHONE CO FPD #1	4,500	16	1	418	15	4	17	9	0	0	480	1%	\$107,200					
79234	SHOSHONE CO FPD #2	7,216	29	1	538	23	103	91	28	1	10	824	1%	\$621,500					
79316	SHOSHONE CO FPD #3	100										0	0%						
79310	ST. JOE VALLEY FIRE DIST	250										0	0%						
<b>TOTALS</b>		<b>12,466</b>	<b>50</b>	<b>2</b>	<b>1,003</b>	<b>39</b>	<b>111</b>	<b>116</b>	<b>37</b>	<b>1</b>	<b>10</b>	<b>1,304</b>	<b>1%</b>	<b>\$728,700</b>	<b>0</b>	<b>2</b>	<b>0</b>	<b>0</b>	<b>0</b>
<b>TETON COUNTY</b>																			
81334	TETON COUNTY FPD	10,000	48	0	261	20	40	21	28	0	0	418	0%	\$12,050					1
<b>TOTALS</b>		<b>10,000</b>	<b>48</b>	<b>0</b>	<b>261</b>	<b>20</b>	<b>40</b>	<b>21</b>	<b>28</b>	<b>0</b>	<b>0</b>	<b>418</b>	<b>0%</b>	<b>\$12,050</b>	<b>0</b>	<b>0</b>	<b>0</b>	<b>0</b>	<b>1</b>
<b>TWIN FALLS COUNTY</b>																			
83207	BUHL FD	9,000	74	2	55	44	12	27	38	0	1	253	0%	\$430,145					
83340	CASTLEFORD FD	277										0	0%						
83338	FILER FD	8,000	62	0	8	50	8	35	10	0	1	174	0%	\$8,500					
83334	ROCK CREEK RURAL FPD	14,000	89	1	375	15	15	119	17	0	1	632	1%	\$1,037,900					
83349	SALMON TRACT RURAL FPD	750										0	0%						
83101	TWIN FALLS FD	50,000	178	3	556	1,740	154	246	268	11	78	3,234	3%	\$499,290					3
<b>TOTALS</b>		<b>82,027</b>	<b>403</b>	<b>6</b>	<b>994</b>	<b>1,849</b>	<b>189</b>	<b>427</b>	<b>333</b>	<b>11</b>	<b>81</b>	<b>4,293</b>	<b>5%</b>	<b>\$1,975,835</b>	<b>0</b>	<b>0</b>	<b>0</b>	<b>0</b>	<b>3</b>
<b>VALLEY COUNTY</b>																			
85334	CASCADE RURAL FPD	2,500	26	0	196	15	22	49	3	7	4	322	0%	\$684,200					
85304	DONNELLY RURAL FPD	6,000	21	1	151	7	47	23	14	1	0	265	0%	\$146,680					
85340	HIGH VALLEY FIRE PROTECTION ASSN	200										0	0%						
85339	MCCALL FPD	8,000	46	0	591	24	60	77	82	1	10	891	1%	\$195,700					
85307	SO IDAHO TIMBER PROTECTIVE ASSN											0	0%						
85359	STIBNITE FD	35										0	0%						
	YELLOWPINE FD											0	0%						
<b>TOTALS</b>		<b>16,735</b>	<b>93</b>	<b>1</b>	<b>938</b>	<b>46</b>	<b>129</b>	<b>149</b>	<b>99</b>	<b>9</b>	<b>14</b>	<b>1,478</b>	<b>2%</b>	<b>\$1,026,580</b>	<b>0</b>	<b>0</b>	<b>0</b>	<b>0</b>	<b>0</b>
<b>WASHINGTON COUNTY</b>																			
87330	CAMBRIDGE FPD	900										0	0%						
87336	MIDVALE FPD	750	27	0	10	0	3	3	2	0	0	45	0%	\$38,500					
87334	WEISER AREA RURAL FPD	4,500	41	0	0	25	3	20	0	1	1	91	0%	\$160,000					
87301	WEISER CITY FIRE & RESCUE	5,000	40	0	6	16	4	5	7	1	2	81	0%	\$54,750					
<b>TOTALS</b>		<b>11,150</b>	<b>108</b>	<b>0</b>	<b>16</b>	<b>41</b>	<b>10</b>	<b>28</b>	<b>9</b>	<b>2</b>	<b>3</b>	<b>217</b>	<b>0%</b>	<b>\$253,250</b>	<b>0</b>	<b>0</b>	<b>0</b>	<b>0</b>	<b>0</b>
<b>STATE OF IDAHO TOTALS</b>													<b>100%</b>	<b>\$58,247,320</b>	<b>0</b>	<b>93</b>	<b>11</b>	<b>51</b>	



# Glossary of Terms and Abbreviations

**\$ Loss** - Combined estimated property and content dollar loss as reported by reporting agencies.

**Alarm** - Any notification made to the fire department that a situation exists or may exist requiring a response.

**Arson** - The crime of maliciously and intentionally or recklessly starting a fire or causing an explosion.

**Automatic Extinguishing Systems (AES)** - A device or system providing an emergency fire extinguishing function without the necessity of human intervention, typically a water spray.

**Casualty** - A person who is injured or killed at the scene of a fire or other reported incident.

**Cause** - The circumstances or conditions that brought about or resulted in a fire or explosion incident, damage to property resulting from the fire or explosion incident, or bodily injury or loss of life resulting from the fire or explosion incident.

**Civilian Fire Casualty** - Any non-fire service person injured or killed as a direct result of a fire-related incident.

**Confined Fire** - Fire where the flame does not extend beyond a combustible container such as a cooking vessel, chimney or flue, trash container, etc.

**Contained Fire** - Fire spread that is reasonably expected to remain in check under prevailing conditions.

**Crop** - Cultivated vegetation such as grains, trees, orchard, nursery stock, etc.

**EMS** - Emergency Medical Service.

**Fatality** - An injury that is fatal or becomes fatal within one year of the incident.

**Fire** - Any instance of destructive and uncontrolled burning, including explosion, of combustible solids, liquids or gases.

**Hazardous Materials** - Any material that is air-reactive, corrosive, explosive, flammable gas, organic peroxide, oxidizing material, radioactive, toxic, unstable, water-reactive, or a flammable or combustible liquid; and any substance or mixture of substances that is an irritant or a strong sensitizer or generates pressure through exposure to heat, decomposition, or other means.

**Incident** - An event to which the reporting agency responds or should have responded. An incident may have more than one response.

**Incident Record** - The official file on an incident.

**Incident Report** - A document prepared by fire department personnel about a particular incident.

**Mobile Property** - Property designed to be movable whether or not it still is, such as vehicles, ships and airplanes.





**Mutual Aid** - Assistance given to or received by a fire department, whether fire or non-fire aid, by another fire department outside its normal jurisdiction.

**NFIRS** - National Fire Incident Reporting System.

**Non-Fire Service Personnel** - All persons involved with an incident who are not fire service personnel, such as police, utility company employees, non-fire service medical personnel or civilians.

**Origin** - The physical location where a heat source and fuel came in contact with each other.

**Overpressure** - A transient air pressure, such as the shock wave from an explosion, that is greater than the surrounding atmospheric pressure.

**Prescribed Fire** - Any fire ignited by management actions to meet specific objectives. A written, approved prescribed fire plan must exist prior to ignition. The controlled application of fire to wildland fuels in either their natural or modified state under specified environmental conditions allowing the fire to be confined to a predetermined area and, at the same time, to produce the intensity of heat and rate of spread required to attain planned resource management objectives.

**Property Use** - The actual use of the property where the incident occurred. A building, for example, could serve as a garage, a hospital or a department store. The use of property does not define any of the other important fire-related details of a property such as access, ownership, size, internal weaknesses in fire defense or construction.

**Response Time** - The length of time between notification of and arrival at an incident scene as reported by the responding agency.

**Structure** - An assembly of materials forming a construction for occupancy or use to serve a specific purpose. This includes, but is not limited to, buildings, open platforms, bridges, roof assemblies over open storage or process areas, tents, air-supported structures, and grandstands.

**Structure Fire** - Any fire inside, on, under or touching a structure.

**Wildland Urban Interface Area** - The geographical area where structures and other human development meet or intermingle with wildland or vegetative fuels.

**Wildland** - Land in its uncultivated, more or less natural state and covered by timber, woodland, brush or grass. An area in which development is essentially nonexistent except for roads, railroads, power lines and similar facilities.

**Wildland Fire** - Any involved vegetative fuel, other than prescribed fire, that occurs in wildland. A wildland fire may expose or possibly consume structures.

**Fire Department Information by County  
Personnel, Funding and Number of Stations\***

FIRE DEPARTMENT	COUNTY	CAREER FIREFIGHTERS	VOLUNTEERS: PAID- PER-CALL	VOLUNTEERS: NO-PAY- PER-CALL	TOTAL FIREFIGHTERS	FUNDING	NUMBER OF STATIONS IN JURISDICTION
Boise FD	Ada	289	0	0	289	Tax Base	19
Eagle FPD	Ada	37	0	47	84	Tax Base	3
Kuna Rural Fire Dist	Ada	11	30	0	41	Tax Base	2
Meridian FD	Ada	57	16	0	73	Tax Base	5
North Ada County Fire & Rescue Dist	Ada	21	0	0	21	Tax Base	3
Star Joint FPD	Ada	9	0	20	29	Tax Base	2
Whitney Fire Dist	Ada	1	0	0	1	Tax Base	2
<b>County Totals</b>		<b>425</b>	<b>46</b>	<b>67</b>	<b>538</b>		<b>36</b>
Bear Fire Dist	Adams	0	0	12	12	Grants	0
Council Volunteer Fire Dist	Adams	0	0	15	15	Tax Base	1
Cuprum VFD	Adams	0	0	4	4	Subscription Dues	1
Indian Valley Rural FD	Adams	0	0	21	21	Tax Base	3
Meadows Valley FPD	Adams	0	0	12	12	Tax Base	1
<b>County Totals</b>		<b>0</b>	<b>0</b>	<b>64</b>	<b>64</b>		<b>6</b>
Arimo FD	Bannock	0	0	8	8	Tax Base	1
Chubbuck FD	Bannock	7	37	0	44	Tax Base	1
Downey Volunteer Fire Dist	Bannock	0	0	0	0	Tax Base	1
Inkom FD	Bannock	0	0	0	0	Tax Base	1
Lava Hot Springs VFD	Bannock	0	0	18	18	Tax Base	1
McCammon VFD	Bannock	0	0	11	11	Tax Base	1
Pocatello FD	Bannock	72	0	0	72	Tax Base	5
Pocatello Valley FD	Bannock	0	0	0	0	Private	1
<b>County Totals</b>		<b>79</b>	<b>37</b>	<b>37</b>	<b>153</b>		<b>12</b>
Bear Lake Volunteer FPD	Bear Lake	0	0	0	0	Tax Base	9
Montpelier FD	Bear Lake	0	18	0	18	Tax Base	1
<b>County Totals</b>		<b>0</b>	<b>18</b>	<b>0</b>	<b>18</b>		<b>10</b>
Emida Fire Dist	Benewah	0	0	0	0	Tax Base	1
Fernwood Rural FPD	Benewah	0	0	13	13	Tax Base	1
Gateway FPD	Benewah	1	14	0	15	Tax Base	1
St. Maries FPD	Benewah	1	0	40	41	Tax Base	3
Tensed Rural Fire Dist	Benewah	0	0	0	0	Tax Base	1
<b>County Totals</b>		<b>2</b>	<b>14</b>	<b>53</b>	<b>69</b>		<b>7</b>
Aberdeen/Springfield Fire Dist	Bingham	0	25	0	25	Tax Base	2
Atomic City FD	Bingham	0	0	11	11	Grants	1
Blackfoot FD	Bingham	24	30	0	54	Tax Base	2
Firth Fire Dist	Bingham	0	20	0	20	Tax Base	2
Fort Hall Fire & EMS Dist	Bingham	20	4	0	24	Tribal Funds	2
Shelley-Firth Rural Fire Dist	Bingham	0	24	0	24	Tax Base	1
<b>County Totals</b>		<b>44</b>	<b>103</b>	<b>11</b>	<b>158</b>		<b>10</b>
Bellevue FD	Blaine	0	18	0	18	Tax Base	1
Carey Rural FPD	Blaine	0	26	0	26	Tax Base	3
Hailey FD	Blaine	4	18	0	22	Tax Base	1
Ketchum FD	Blaine	11	37	0	48	Tax Base	3
Smiley Creek Fire Dist	Blaine	0	12	0	12	Tax Base	1
Sun Valley FD	Blaine	3	24	0	27	Tax Base	2
Wood River Fire & Rescue	Blaine	11	42	0	53	Tax Base	3
<b>County Totals</b>		<b>29</b>	<b>177</b>	<b>0</b>	<b>206</b>		<b>14</b>

**Fire Department Information by County  
Personnel, Funding and Number of Stations\***

FIRE DEPARTMENT	COUNTY	CAREER FIREFIGHTERS	VOLUNTEERS: PAID- PER-CALL	VOLUNTEERS: NO-PAY- PER-CALL	TOTAL FIREFIGHTERS	FUNDING	NUMBER OF STATIONS IN JURISDICTION
Centerville VFD	Boise	0	0	9	9	Subscription Dues	1
Clear Creek VFD	Boise	0	0	15	15	Donations	2
Garden Valley FPD	Boise	1	0	21	22	Tax Base	2
Horseshoe Bend Fire Dist	Boise	0	0	18	18	Tax Base	1
Idaho City VFD	Boise	0	0	20	20	Donations	1
Lowman Volunteer Fire Dist, Inc.	Boise	0	0	12	12	Subscription Dues	3
Piacedville FPD	Boise	0	0	0	0	Tax Base	1
Robie Creek VFD	Boise	0	0	0	0	Subscription Dues	2
Valley of the Pines Thorn Creek VFD	Boise	0	0	15	15	Subscription Dues	1
Wilderness Ranch FPD	Boise	1	0	42	43	Tax Base	1
<b>County Totals</b>		<b>2</b>	<b>0</b>	<b>152</b>	<b>154</b>		<b>15</b>

Clark Fork Fire & Rescue	Bonner	0	11	0	11	Tax Base	1
Coolin-Cavanaugh Bay FPD	Bonner	0	0	34	34	Tax Base	1
Hope-East Hope VFD	Bonner	0	14	0	14	Tax Base	1
North of the Narrows Fire Dist	Bonner	0	0	17	17	Tax Base	1
Northside Fire Dist	Bonner	2	0	24	26	Tax Base	4
Sagle Fire Dist	Bonner	9	33	0	42	Tax Base	5
Sam Owen Fire Dist	Bonner	0	0	18	18	Tax Base	2
Sandpoint FD	Bonner	10	24	0	34	Tax Base	1
Schweitzer Fire Dist	Bonner	2	4	6	12	Tax Base	1
West Pend Oreille Fire Dist	Bonner	0	1	49	50	Tax Base	2
West Priest Lake Fire Dist	Bonner	0	0	25	25	Tax Base	2
Westside FPD	Bonner	2	9	0	11	Tax Base	3
<b>County Totals</b>		<b>25</b>	<b>96</b>	<b>173</b>	<b>294</b>		<b>24</b>

Ammon FD	Bonneville	3	37	0	40	Tax Base	1
Greater Swan Valley FPD #2	Bonneville	1	29	0	30	Tax Base	2
Idaho Falls FD	Bonneville	99	0	0	99	Tax Base	5
INL FD	Bonneville	93	0	0	93	Federal	3
Ucon FD	Bonneville	0	0	0	0	Tax Base	1
<b>County Totals</b>		<b>196</b>	<b>66</b>	<b>0</b>	<b>262</b>		<b>12</b>

Bonniers Ferry FD	Boundary	1	20	0	21	Tax Base	2
Curley Creek VFD	Boundary	0	12	0	12	Subscription Dues	2
Hall Mountain Volunteer Fire Assn, Inc.	Boundary	0	0	27	27	Subscription Dues	4
Moyie Springs FD	Boundary	0	10	0	10	Tax Base	1
North Bench FD	Boundary	0	0	16	16	Subscription Dues	3
Paradise Valley Fire Dist	Boundary	1	16	0	17	Tax Base	2
South Boundary FPD	Boundary	1	0	22	23	Tax Base	3
<b>County Totals</b>		<b>3</b>	<b>58</b>	<b>65</b>	<b>126</b>		<b>17</b>

Arco FD	Butte	0	0	15	15	Tax Base	1
Lost River FPD	Butte	0	0	0	0	Tax Base	1
<b>County Totals</b>		<b>0</b>	<b>0</b>	<b>15</b>	<b>15</b>		<b>2</b>

Fairfield FD	Camas	0	0	15	15	Tax Base	1
West Magic Fire Dist	Camas	0	0	8	8	Tax Base	2
<b>County Totals</b>		<b>0</b>	<b>0</b>	<b>23</b>	<b>23</b>		<b>3</b>

**Fire Department Information by County  
Personnel, Funding and Number of Stations\***

FIRE DEPARTMENT	COUNTY	CAREER FIREFIGHTERS	VOLUNTEERS: PAID- PER-CALL	VOLUNTEERS: NO-PAY- PER-CALL	TOTAL FIREFIGHTERS	FUNDING	NUMBER OF STATIONS IN JURISDICTION
Caldwell FD	Canyon	43	25	0	68	Tax Base	2
Caldwell Rural FPD	Canyon	43	25	0	68	Tax Base	1
Melba Rural FPD	Canyon	0	0	25	25	Tax Base	1
Middleton Rural FPD	Canyon	9	37	0	46	Tax Base	2
Nampa FD	Canyon	89	0	0	89	Tax Base	5
Parma Rural FPD	Canyon	3	0	30	33	Tax Base	2
Upper Deer Flat FD	Canyon	0	0	17	17	Tax Base	1
Wildier Rural FPD	Canyon	1	0	18	19	Tax Base	1
<b>County Totals</b>		<b>188</b>	<b>87</b>	<b>90</b>	<b>365</b>		<b>15</b>
Bancroft FD	Caribou	0	0	10	10	Tax Base	1
Caribou County FD	Caribou	0	13	0	13	Tax Base	1
Grace FD	Caribou	0	0	13	13	Tax Base	1
Soda Springs FD	Caribou	0	0	13	13	Tax Base	1
<b>County Totals</b>		<b>0</b>	<b>13</b>	<b>36</b>	<b>49</b>		<b>4</b>
Ace Fire Protection Assn Unit	Cassia	0	0	12	12	Tax Base	1
Albion FPD	Cassia	0	0	10	10	Tax Base	1
Burley FD	Cassia	10	22	0	32	Tax Base	1
Declo FD	Cassia	0	0	0	0	Tax Base	1
Oakley FD	Cassia	0	16	0	16	Tax Base	1
Raft River FPD	Cassia	0	0	21	21	Tax Base	3
<b>County Totals</b>		<b>10</b>	<b>38</b>	<b>43</b>	<b>91</b>		<b>8</b>
Dubois City FD	Clark	0	0	0	0	Tax Base	1
<b>County Totals</b>		<b>0</b>	<b>0</b>	<b>0</b>	<b>0</b>		<b>1</b>
Clearwater Pothatch Timber Protective Assn	Clearwater	17	0	0	17	Tax Base	4
Elk River VFD	Clearwater	0	0	8	8	Donations	1
Evergreen Rural Fire Dist	Clearwater	0	0	23	23	Tax Base	1
Grangemont FD	Clearwater	0	0	0	0	Tax Base	1
Greer Rural Fire Dist	Clearwater	0	0	0	0	Tax Base	1
Orofino FD	Clearwater	0	0	0	0	Tax Base	2
Pierce VFD	Clearwater	0	0	0	0	Tax Base	1
Sunnyside Rural Fire Dist	Clearwater	0	0	22	22	Tax Base	1
Twin Ridge Rural FD	Clearwater	0	0	25	25	Tax Base	1
Upper Fords Creek Rural FD	Clearwater	0	0	0	0	Tax Base	1
Weippe FD	Clearwater	0	0	0	0	Tax Base	1
<b>County Totals</b>		<b>17</b>	<b>0</b>	<b>78</b>	<b>95</b>		<b>15</b>
North Custer Rural Fire Dist	Custer	0	1	57	58	Tax Base	4
Sawtooth Valley Rural Fire Dist	Custer	0	0	19	19	Tax Base	1
South Custer Rural FPD	Custer	0	0	0	0	Tax Base	0
<b>County Totals</b>		<b>0</b>	<b>1</b>	<b>76</b>	<b>77</b>		<b>5</b>
Atlanta Rural FD	Elmore	1	0	8	9	Tax Base	1
Glenns Ferry/King Hill FD	Elmore	1	21	0	22	Tax Base	2
Mountain Home Rural FPD	Elmore	2	31	0	33	Tax Base	1
Mountain Home VFD	Elmore	2	32	0	34	Tax Base	4
Oasis VFD	Elmore	0	0	19	19	Tax Base	0
Prairie ORU & Fire	Elmore	0	0	0	0	Tax Base	0
<b>County Totals</b>		<b>6</b>	<b>84</b>	<b>27</b>	<b>117</b>		<b>8</b>



**Fire Department Information by County  
Personnel, Funding and Number of Stations\***

FIRE DEPARTMENT	COUNTY	CAREER FIREFIGHTERS	VOLUNTEERS: PAID- PER-CALL	VOLUNTEERS: NO-PAY- PER-CALL	TOTAL FIREFIGHTERS	FUNDING	NUMBER OF STATIONS IN JURISDICTION
Franklin County Fire Dist	Franklin	1	30	0	31	Tax Base	2
<b>County Totals</b>					<b>31</b>		<b>2</b>
Island Park FPD	Fremont	0	0	0	0	Tax Base	4
North Fremont Fire Dist, Inc.	Fremont	0	20	0	20	Tax Base	1
South Fremont Fire Dist	Fremont	0	0	23	23	Tax Base	1
<b>County Totals</b>		<b>0</b>	<b>20</b>	<b>23</b>	<b>43</b>		<b>6</b>
Emmett FD	Gem	1	16	0	17	Tax Base	1
Gem County FPD #1	Gem	1	30	0	31	Tax Base	3
Gem County FPD #2	Gem	0	0	35	35	Tax Base	2
<b>County Totals</b>		<b>2</b>	<b>46</b>	<b>35</b>	<b>83</b>		<b>6</b>
Bliss Fire Dist	Gooding	0	0	12	12	Tax Base	1
Gooding City/Rural FD	Gooding	1	25	0	26	Tax Base	1
Hagerman FPD	Gooding	1	20	0	21	Tax Base	1
Wendell Rural Fire Dist/Wendell FD	Gooding	2	0	18	20	Tax Base	1
<b>County Totals</b>		<b>4</b>	<b>45</b>	<b>30</b>	<b>79</b>		<b>4</b>
BPC Volunteer Rural FD, Inc.	Idaho	0	0	15	15	Grants	1
Carrot Ridge Volunteer Fire Dist	Idaho	0	0	50	50	Subscription Dues	2
Cottonwood Rural Fire Dist	Idaho	0	22	0	22	Tax Base	1
Cottonwood VFD	Idaho	0	0	22	22	Tax Base	1
Elk City VFD	Idaho	0	0	6	6	Donations	1
Ferdinand FD	Idaho	0	0	12	12	Grants	1
Glenwood/Carbel Volunteer Fire Dist	Idaho	0	0	0	0	Subscription Dues	1
Grangeville Rural FD	Idaho	0	0	0	0	Tax Base	1
Harpster FPD	Idaho	0	0	22	22	Tax Base	1
Kooskia FD	Idaho	0	16	0	16	Tax Base	1
Ridge Runner FD	Idaho	0	0	20	20	Grants	1
Riggins City FD	Idaho	0	0	16	16	Tax Base	1
Salmon River Rural FD	Idaho	0	0	41	41	Subscription Dues	6
Secesh Meadow Rural Fire Dist	Idaho	0	0	10	10	Donations	0
Stites FD	Idaho	0	0	10	10	Tax Base	1
White Bird City/Rural FD	Idaho	0	0	15	15	Tax Base	1
<b>County Totals</b>		<b>0</b>	<b>0</b>	<b>277</b>	<b>277</b>		<b>21</b>
Central Fire Dist	Jefferson	3	80	0	83	Tax Base	4
Hamer FPD	Jefferson	0	0	0	0	Tax Base	1
Roberts Fire Dist	Jefferson	0	0	0	0	Tax Base	1
West Jefferson Fire Control Dist	Jefferson	0	20	0	20	Tax Base	2
<b>County Totals</b>		<b>3</b>	<b>100</b>	<b>0</b>	<b>103</b>		<b>8</b>
First Segregation Fire Dist	Jerome	0	12	0	12	Tax Base	2
Jerome City FD	Jerome	12	14	0	26	Tax Base	3
Jerome Rural Fire Dist #1	Jerome	0	18	0	18	Tax Base	2
<b>County Totals</b>		<b>12</b>	<b>44</b>	<b>0</b>	<b>56</b>		<b>7</b>



**Fire Department Information by County  
Personnel, Funding and Number of Stations\***

FIRE DEPARTMENT	COUNTY	CAREER FIREFIGHTERS	VOLUNTEERS: PAID- PER-CALL	VOLUNTEERS: NO-PAY- PER-CALL	TOTAL FIREFIGHTERS	FUNDING	NUMBER OF STATIONS IN JURISDICTION
Coeur d'Alene FD	Kootenai	48	0	0	48	Tax Base	3
East Side FPD	Kootenai	0	24	0	24	Tax Base	3
Hauser Lake FPD	Kootenai	1	0	18	19	Tax Base	1
Kootenai County Fire & Rescue	Kootenai	50	0	25	75	Tax Base	8
Mica-Kidd Island FPD	Kootenai	2	0	24	26	Tax Base	1
Northern Lakes FPD	Kootenai	30	0	0	30	Tax Base	8
Region 1. HazMat Team	Kootenai	0	33	0	33	Tax Base	1
Spirit Lake FPD	Kootenai	8	0	22	30	Tax Base	3
Timberlake FPD	Kootenai	6	0	20	26	Tax Base	6
Worley FPD	Kootenai	5	0	14	19	Tax Base	5
<b>County Totals</b>		<b>150</b>	<b>57</b>	<b>123</b>	<b>330</b>		<b>39</b>
Bovill FPD	Latah	0	0	20	20	Tax Base	1
Deary Rural Fire Dist	Latah	0	0	20	20	Tax Base	2
Genesee FD	Latah	0	0	0	0	Tax Base	1
Julietta VFD	Latah	0	0	8	8	Tax Base	1
Kendrick VFD	Latah	0	0	0	0	Tax Base	1
Moscow VFD	Latah	4	0	77	81	Tax Base	3
Moscow Rural FPD	Latah	0	0	30	30	Tax Base	2
Potlatch Rural FPD	Latah	0	0	0	0	Tax Base	1
Troy VFD	Latah	0	0	44	44	Tax Base	1
<b>County Totals</b>		<b>4</b>	<b>0</b>	<b>199</b>	<b>203</b>		<b>13</b>
Elk Bend FPD	Lemhi	0	0	26	26	Tax Base	3
Leadore VFD	Lemhi	0	0	0	0	Donations	2
Lemhi County FPD #1	Lemhi	1	30	0	31	Tax Base	4
North Fork Fire Dist	Lemhi	0	0	0	0	Tax Base	0
Williams Lake VFD	Lemhi	0	0	3	3	Donations	1
<b>County Totals</b>		<b>1</b>	<b>30</b>	<b>29</b>	<b>60</b>		<b>10</b>
Craigmont FD	Lewis	0	16	0	16	Tax Base	1
Kamiah VFD	Lewis	0	0	30	30	Tax Base	1
Nez Perce City/Rural FD	Lewis	0	0	0	0	Tax Base	1
Reubens FD	Lewis	0	0	0	0	Tax Base	1
Winchester VFD	Lewis	0	0	10	10	Grants	1
<b>County Totals</b>		<b>0</b>	<b>16</b>	<b>40</b>	<b>56</b>		<b>5</b>
Dietrich Fire Dist	Lincoln	0	0	12	12	Tax Base	1
Richfield FPD	Lincoln	0	0	10	10	Tax Base	1
Shoshone City/Rural Fire Dist	Lincoln	0	14	0	14	Tax Base	2
<b>County Totals</b>		<b>0</b>	<b>14</b>	<b>22</b>	<b>36</b>		<b>4</b>
Madison FD	Madison	16	53	0	69	Tax Base	2
<b>County Totals</b>		<b>16</b>	<b>53</b>	<b>0</b>	<b>69</b>		<b>2</b>
Minidoka County FPD	Minidoka	1	50	0	51	Tax Base	3
Rupert City Fire & Rescue	Minidoka	1	23	0	24	Tax Base	1
West End FPD	Minidoka	1	18	3	22	Tax Base	1
<b>County Totals</b>		<b>3</b>	<b>91</b>	<b>3</b>	<b>97</b>		<b>5</b>

**Fire Department Information by County  
Personnel, Funding and Number of Stations\***

FIRE DEPARTMENT	COUNTY	CAREER FIREFIGHTERS	VOLUNTEERS: PAID- PER-CALL	VOLUNTEERS: NO-PAY- PER-CALL	TOTAL FIREFIGHTERS	FUNDING	NUMBER OF STATIONS IN JURISDICTION
Big Canyon Fire Dist	Nez Perce	0	0	20	20	Tax Base	1
Clearwater Fire Svcs	Nez Perce	0	0	9	9	Subscription Dues	1
Culdesac VFD	Nez Perce	0	0	12	12	Tax Base	4
Lapwai FD	Nez Perce	0	0	0	0	Tax Base	1
Lewiston FD	Nez Perce	44	0	0	44	Tax Base	3
Nez Perce County FD	Nez Perce	1	0	22	23	Tax Base	2
Wheatland FPD	Nez Perce	0	0	25	25	Tax Base	1
<b>County Totals</b>		<b>45</b>	<b>0</b>	<b>88</b>	<b>133</b>		<b>13</b>
Oneida County Fire Dist/Malad FD	Oneida	0	0	16	16	Tax Base	2
<b>County Totals</b>		<b>0</b>	<b>0</b>	<b>16</b>	<b>16</b>		<b>2</b>
Bruneau FPD	Owyhee	0	0	6	6	Tax Base	1
Grand View Rural FPD	Owyhee	0	0	15	15	Tax Base	2
Homedale Rural FPD	Owyhee	2	0	18	20	Tax Base	1
Marsing City/Rural FPD	Owyhee	0	0	32	32	Tax Base	1
Murphy-Reynolds-Wilson FPD	Owyhee	0	0	28	28	Tax Base	4
Silver City Fire & Rescue, Inc.	Owyhee	0	0	10	10	Donations	1
<b>County Totals</b>		<b>2</b>	<b>0</b>	<b>109</b>	<b>111</b>		<b>10</b>
Fruitland FD	Payette	0	25	0	25	Tax Base	1
New Plymouth Rural Fire Dist	Payette	0	0	0	0	Tax Base	1
Payette City FD	Payette	3	25	0	28	Tax Base	1
Payette Rural Fire District	Payette	0	0	0	0	Tax Base	1
<b>County Totals</b>		<b>3</b>	<b>50</b>	<b>0</b>	<b>53</b>		<b>4</b>
American Falls Rural FPD	Power	0	18	26	44	Tax Base	1
Rockland Rural Fire Dist	Power	0	0	21	21	Tax Base	1
<b>County Totals</b>		<b>0</b>	<b>18</b>	<b>47</b>	<b>65</b>		<b>2</b>
Cataldo FPD	Shoshone	2	8	0	10	State Funding	1
Mullan VFD	Shoshone	0	0	23	23	Tax Base	1
Prichard/Murray VFD, Inc.	Shoshone	0	0	15	15	Fundraisers	2
Shoshone County FPD #1	Shoshone	4	21	0	25	Tax Base	2
Shoshone County FPD #2	Shoshone	7	0	30	37	Tax Base	4
Shoshone County FPD #3	Shoshone	0	25	0	25	Tax Base	1
St. Joe Valley Fire Dist	Shoshone	0	0	0	0	Tax Base	0
<b>County Totals</b>		<b>13</b>	<b>54</b>	<b>68</b>	<b>135</b>		<b>11</b>
Teton County FPD	Teton	18	7	0	25	Tax Base	3
<b>County Totals</b>		<b>18</b>	<b>7</b>	<b>0</b>	<b>25</b>		<b>3</b>
Buhl FD	Twin Falls	4	24	0	28	Tax Base	2
Castleford Fire Dist	Twin Falls	0	0	0	0	Tax Base	0
Filer FD	Twin Falls	0	0	0	0	Tax Base	1
Hansen City FD	Twin Falls	0	0	0	0	Tax Base	0
Rock Creek Rural FPD	Twin Falls	1	11	0	12	Tax Base	4
Salmon Tract Rural FPD	Twin Falls	0	0	0	0	Tax Base	0
Twin Falls FD	Twin Falls	39	0	0	39	Tax Base	3
<b>County Totals</b>		<b>44</b>	<b>35</b>	<b>0</b>	<b>79</b>		<b>10</b>

**Fire Department Information by County  
Personnel, Funding and Number of Stations\***

FIRE DEPARTMENT	COUNTY	CAREER FIREFIGHTERS	VOLUNTEERS: PAID- PER-CALL	VOLUNTEERS: NO-PAY- PER-CALL	TOTAL FIREFIGHTERS	FUNDING	NUMBER OF STATIONS IN JURISDICTION
Cascade Rural FPD	Valley	1	32	0	33	Tax Base	3
Donnelly Rural FPD	Valley	8	19	1	28	Tax Base	2
High Valley Fire Protection Assn	Valley	0	0	0	0	Tax Base	0
McCall FPD	Valley	12	32	0	44	Tax Base	2
Southern Idaho Timber Protective Assn	Valley	25	0	0	25	Tax Base	0
Yellow Pine Fire Dist	Valley	0	0	10	10	Tax Base	1
<b>County Totals</b>		<b>46</b>	<b>83</b>	<b>11</b>	<b>140</b>		<b>8</b>
Cambridge FPD	Washington	0	0	14	14	Tax Base	1
Midvale FPD	Washington	0	0	25	25	Tax Base	2
Weiser City Fire & Rescue	Washington	1	34	0	35	Tax Base	1
Weiser Rural FD	Washington	0	28	0	28	Tax Base	2
<b>County Totals</b>		<b>1</b>	<b>62</b>	<b>39</b>	<b>102</b>		<b>6</b>
<b>State Totals</b>		<b>1394</b>	<b>1725</b>	<b>2208</b>	<b>5358</b>		<b>431</b>

\* The information in this document was compiled from surveys submitted by the fire agencies and other sources.



# 2012 Wildland Fires

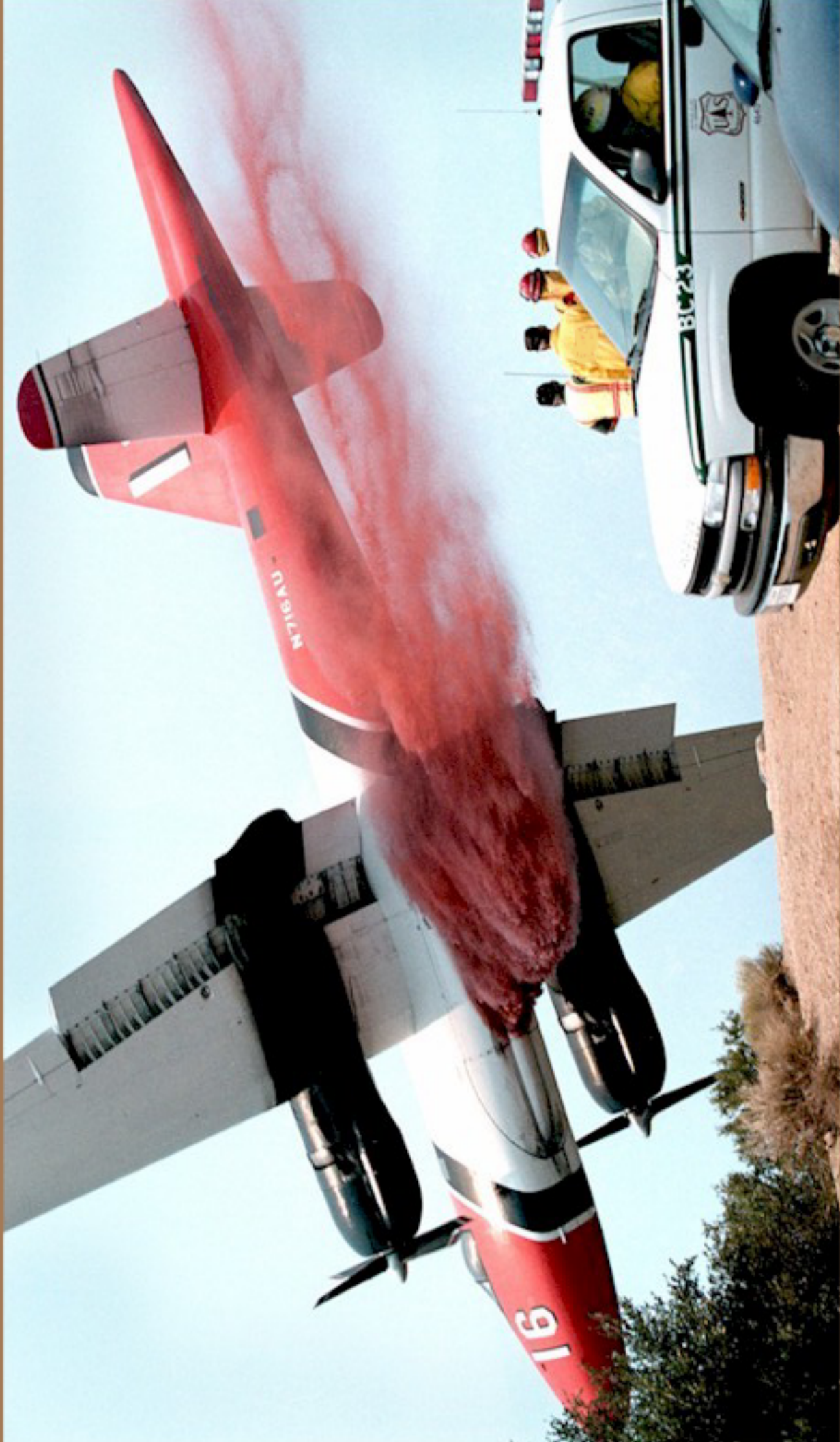


Wesley Fire- Adams County -  
Photo provided by Jeff Sands,  
Chief Deputy - Investigations,  
State Fire Marshal's Office

The following sections of this annual report show excerpts from information compiled by:

- The National Interagency Fire Center
- The Idaho Department of Lands
- Idaho Firewise

This combined information demonstrates the significant impact of wildland fires and the efforts to prevent them across the great state of Idaho. References showing how to access the complete reports from these agencies can be found on page 68.



Fire Retardant Plane - Photo provided by Idaho Firewise

## Statistics from Idaho Department of Lands Year-End Fire Report For Calendar Year (CY) 2012

LIGHTNING VS HUMAN FIRES						
Year	# of Lightning Fires	Lightning Acres Burned	# of Human Fires	Human Acres Burned	Total # of Fires	Total Acres Burned
2012	81	295	106	4,460	187	4,755
2011	113	289	136	727	249	1,016
2010	86	1,729	97	1,736	183	3,465
2009	233	274	119	182	352	457
30-YR Avg.	200	7,129	170	2,731	370	9,860

Minor discrepancies exist due to rounding

### FIRES IN THE WILDLAND URBAN INTERFACE

The wildland urban interface (WUI) consists of areas where human habitation adjoins, or is mixed with, the wildland and wildland fuels. The character of the WUI ranges from urban areas adjoining wildlands to isolated ranches or cabins. Using county WUI designations, approximately 78 percent of the lands IDL protects from wildfire fall within the WUI.

When a fire occurs within the WUI, the job of firefighting becomes more complex and this year the cost per acre was 87% higher than in the non-WUI. Since 1993, the number of structures in the WUI has nearly doubled. As the number of structures in the WUI continues to increase, concerns over public safety and the protection of improvements also increases.

NUMBER OF WUI FIRES BY CAUSE WITH COSTS					
General Cause	# of Fires	% of Fires	Total Cost	% of Cost	Cost / Fire
<b>Human-Caused</b>					
Miscellaneous	22	39%	\$659,277	16%	\$29,967
Debris Burning	12	21%	\$46,893	1%	\$3,908
Campfire	9	16%	\$13,731	0.3%	\$1,526
Equipment Use	9	16%	\$12,913	0.3%	\$1,435
Arson	4	7%	\$3,508,080	83%	\$877,020
Children	1	2%	\$1,922	0.0%	\$1,922
Smoking					
Railroad					
Total Human	57	100%	\$4,242,816	100%	\$74,435
<b>Human and Lightning</b>					
Lightning	31	35%	\$238,779	5%	\$7,703
Total Human	57	65%	\$4,242,816	95%	\$74,435
Grand Total	88	100%	\$4,481,595	100%	\$50,927

Minor discrepancies exist due to rounding

WUI ACRES BURNED BY CAUSE WITH COSTS					
General Cause	Acres Burned	% of Acreage	Total Cost	% of Cost	Cost / Acre
<b>Human-Caused</b>					
Arson	766	63%	\$3,508,080	83%	\$4,579
Miscellaneous	354	29%	\$659,277	16%	\$1,863
Debris Burning	91	7%	\$46,893	1%	\$514
Equipment Use	8	1%	\$12,913	0.3%	\$1,575
Campfire	1	0.1%	\$13,731	0.3%	\$14,303
Children	0.1	0.0%	\$1,922	0.0%	\$19,216
Smoking					
Railroad					
Total Human	1,220	100%	\$4,242,816	100%	\$3,476
<b>Human and Lightning</b>					
Lightning	34	3%	\$238,779	5%	\$6,968
Total Human	1,220	97%	\$4,242,816	95%	\$3,476
Grand Total	1,255	100%	\$4,481,595	100%	\$3,572

Minor discrepancies exist due to rounding

<b>TEN LARGEST FIRES IN 2012</b>			
<b>Fire Name</b>	<b>District</b>	<b>Size</b>	<b>Cost</b>
Springs*	Southwest Idaho FPD	1,855	\$2,100,000
Flying B	Maggie Creek FPD	584	\$245,895
Karney	Southwest Idaho FPD	440	\$2,400,000
Avelene	Southwest Idaho FPD	325	\$1,100,000
Steep Corner	CPTPA	310	\$2,200,000
Post Hole	Craig Mountain FPD	277	\$132,240
Lawyers	Maggie Creek FPD	233	\$222,261
Mica Slash	Ponderosa FPD	124	\$668,959
C Fire	SITPA	110	\$914,140
Cougar Lane	Maggie Creek FPD	107	\$399,383
Total		4,365	\$10,382,879

\*Springs - This is the burned area in IDL protection. Total size - 6151 ac.

<b>2012 MULTIPLE FIRES PER DAY, BY DISTRICT</b>			
<b>District</b>	<b># of Days with Multi-Fires</b>	<b>Total # Multi-Fires</b>	<b>Most Fires in 1 Day</b>
CPTPA	7	18	4
SITPA	3	7	3
West St. Joe FPD	1	6	6
Southwest Idaho FPD	3	6	2
Ponderosa FPD	1	5	5
Pend Oreille FPD	1	4	4
Cataldo FPD	1	4	4
Maggie Creek FPD	2	4	2
Kootenai Valley FPD	1	2	2
Mica FPD	1	2	2
Craig Mountain FPD	1	2	2
Priest Lake FPD	0	0	1
Total	22	60	6

<b>TEN MOST EXPENSIVE FIRES IN 2012</b>			
<b>Fire Name</b>	<b>District</b>	<b>Size</b>	<b>Total Cost</b>
Karney	Southwest Idaho FPD	440	\$2,400,000
Steep Corner	CPTPA	310	\$2,200,000
Springs	Southwest Idaho FPD	1855	\$2,100,000
Avelene	Southwest Idaho FPD	325	\$1,100,000
C Fire	SITPA	110	\$914,140
Mica Slash	Ponderosa FPD	124	\$668,959
Cougar Lane	Maggie Creek FPD	107	\$399,383
Flying B	Maggie Creek FPD	584	\$245,895
Lawyers	Maggie Creek FPD	233	\$222,261
Post Hole	Craig Mountain FPD	277	\$132,240
Total		4,365	\$10,382,879

Human activity started the largest number of fires and cost the most. In the human-caused category, miscellaneous represented the most fires, but arson was the most expensive. The average cost per fire was \$59,642, with average lightning fire expenses being \$25,679, and human-caused fires costing an average \$85,594.

NUMBER OF FIRES BY CAUSE, BY DISTRICT										
District	Tot # Fires	Lightning	Misc	Debris Burning	Equip Use	Camp Fire	Arson	Children	Smoking	Rail-Road
CPTPA	43	22	3	7	9	2				
West St. Joe FPD	21	11	2	6	1	1				
Southwest Idaho FPD	19	6	4	1	2	2	3	1		
SITPA	19	6	6	2	1	4				
Pend Oreille FPD	17	8	4	1	2	2				
Maggie Creek FPD	16	3	3	5	3	1	1			
Ponderosa FPD	14	11	2				1			
Kootenai Valley FPD	9	3	3	1	1	1				
Cataldo FPD	9	7	1			1				
Craig Mountain FPD	9	3	3		1	1	1			
Mica FPD	7	1	2	3		1				
Priest Lake FPD	4		2			2				
Total	187	81	35	26	20	18	6	1	0	0

NUMBER OF FIRES, BY CAUSE, WITH COSTS					
General Cause	# of Fires	% of Fires	Cost	% of Cost	Cost/Fire
<b>Human-Caused</b>					
Miscellaneous	35	33%	\$3,022,581	33.3%	\$86,359
Debris Burning	26	25%	\$85,949	0.9%	\$3,306
Equipment Use	20	19%	\$2,426,197	26.7%	\$121,310
Campfire	18	17%	\$19,923	0.2%	\$1,107
Arson	6	6%	\$3,516,396	38.8%	\$586,066
Children	1	1%	\$1,922	0.0%	\$1,922
Smoking	0	0%	\$0	0.0%	\$0
Railroad	0	0%	\$0	0.0%	\$0
Total Human	106	100%	\$9,072,968	100%	\$85,594
<b>Human and Lightning</b>					
Lightning	81	43%	\$2,080,027	19%	\$25,679
Human	106	57%	\$9,072,968	81%	\$85,594
Grand Total	187	100%	\$11,152,995	100%	\$59,642

Minor discrepancies exist due to rounding

ACRES BURNED BY CAUSE, WITH COSTS						
General Cause	Acres Burned	% of Acreage	Cost	Cost/ Acre	Bill Amount	Amount Collected
<b>Human-Caused</b>						
Miscellaneous	2,810.4	63%	\$3,022,581	\$1,075	\$79,814	\$0
Arson	767	17%	\$3,516,396	\$4,583	\$0	\$0
Equipment Use	623	14%	\$2,426,197	\$3,892	\$0	\$0
Debris Burning	231	5%	\$85,949	\$373	\$7,196	\$143
Campfire	28	1%	\$19,923	\$713	\$0	\$0
Children	0.1	0%	\$1,922	\$19,216	\$0	\$0
Smoking		0%	\$0	\$0	\$0	\$0
Railroad		0%	\$0	\$0	\$0	\$0
Total Human	4,460	100%	\$9,072,968	\$2,034	\$87,010	\$143
<b>Human and Lightning</b>						
Lightning	295	6%	\$2,080,027	\$7,051	\$0	\$0
Human	4,460	94%	\$9,072,968	\$2,034	\$87,010	\$143
Grand Total	4,755	100%	\$11,152,995	\$2,346	\$87,010	\$143
Collections from prior years negligent fires						\$191,441
Total Calendar Year Collections						\$191,584

Minor discrepancies exist due to rounding

DISTRICT ACRES BURNED, BY CAUSE										
District	Total Acres	Lightning	Misc	Arson	Equip Use	Debris Burn	Camp Fire	Children	Smoking	Rail-Road
Southwest Idaho FPD	2,656.6	6.4	1,876.8	766.0	0.2	6.8	0.4	0.1		
Maggie Creek FPD	1,041.6	9.1	924.0	0.3	26.8	81.3	0.1			
CPTPA	416.5	8.3	0.6		318.5	88.9	0.2			
Craig Mountain FPD	304.7	0.4	0.3	1.0	277.0		26.0			
Ponderosa FPD	128.1	126.9	1.1	0.1						
SITPA	115.5	111.3	2.8		0.5	0.4	0.6			
West St. Joe FPD	67.3	15.4	0.2		0.1	51.5	0.1			
Pend Oreille FPD	15.4	14.4	0.6		0.2	0.1	0.1			
Cataldo FPD	4.5	2.4	2.0				0.1			
Mica FPD	3.4	0.1	1.5			1.7	0.1			
Kootenai Valley FPD	0.9	0.3	0.3		0.1	0.1	0.1			
Priest Lake FPD	0.4		0.2				0.2			
Total	4,754.9	295.0	2,810.4	767.4	623.4	230.7	27.9	0.1	0.0	0.0

\* Total of 4 that were stationed at various locations and times across the state

Minor discrepancies exist due to rounding



2012 AVIATION SUMMARY									
Aircraft	Total Flight Hours	IDL Flight Hours	Reimbursable Flight Hours	% Reimbursable Flight Hours	Availability	Operating	Total	Reimbursable	IDL Obligation
Helicopter Total	294	110	184	62%	\$781,040	\$439,400	\$1,220,440	\$551,835	\$668,605
Fire Boss Total	128	14	114	89%	\$361,292	\$537,786	\$899,078	\$532,095	\$366,984
SEATs *	430	32	398	93%	\$685,425	\$1,201,097	\$1,886,522	\$1,249,516	\$637,006
<b>AVIATION TOTAL</b>	<b>851</b>	<b>156</b>	<b>695</b>	<b>82%</b>	<b>\$1,827,757</b>	<b>\$2,178,284</b>	<b>\$4,006,041</b>	<b>\$2,333,446</b>	<b>\$1,672,595</b>

\* Total of 4 that were stationed at various locations and times across the state  
 Minor discrepancies exist due to rounding

SUPPRESSION COST PER FIRE			
District	# of Fires	Suppression Cost	District Cost/Fire
CPTPA	43	\$2,362,092	\$54,932
West St. Joe FPD	21	\$146,361	\$6,970
Southwest Idaho FPD	19	\$5,768,834	\$303,623
SITPA	19	\$943,416	\$49,653
Pend Oreille FPD	17	\$31,438	\$1,849
Maggie Creek FPD	16	\$959,496	\$59,969
Ponderosa FPD	14	\$745,021	\$53,216
Kootenai Valley FPD	9	\$10,725	\$1,192
Cataldo FPD	9	\$33,100	\$3,678
Craig Mountain FPD	9	\$144,378	\$16,042
Mica FPD	7	\$6,642	\$949
Priest Lake FPD	4	\$1,493	\$373
<b>Total</b>	<b>187</b>	<b>\$11,152,995</b>	<b>\$59,642</b>

Minor discrepancies exist due to rounding

SUPPRESSION COST PER ACRE BURNED			
District	# of Acres	Suppression Cost	District Cost/Acre
Southwest Idaho FPD	2,656.6	\$5,768,834	\$2,172
Maggie Creek FPD	1,041.6	\$959,496	\$921
CPTPA	416.5	\$2,362,092	\$5,671
Craig Mountain FPD	304.7	\$144,378	\$474
Ponderosa FPD	128.1	\$745,021	\$5,816
SITPA	115.5	\$943,416	\$8,167
West St. Joe FPD	67.3	\$146,361	\$2,175
Pend Oreille FPD	15.4	\$31,438	\$2,040
Cataldo FPD	4.5	\$33,100	\$7,356
Mica FPD	3.4	\$6,642	\$1,954
Kootenai Valley FPD	0.9	\$10,725	\$11,917
Priest Lake FPD	0.4	\$1,493	\$3,732
<b>Total</b>	<b>4,755</b>	<b>\$11,152,995</b>	<b>\$2,346</b>

Minor discrepancies exist due to rounding

NUMBER OF AIRCRAFT USED ON FIRES		
District	Air Tankers	Helicopters
Priest Lake FPD		
Kootenai Valley FPD		
Mica FPD		
Pend Oreille FPD		
Cataldo FPD	1	2
West St. Joe FPD		4
Ponderosa FPD	5	3
Maggie Creek FPD		2
Craig Mountain FPD	4	4
Southwest Idaho FPD	8	19
SITPA	2	5
CPTPA	4	11
<b>Total</b>	<b>24</b>	<b>50</b>

## Significant Fire Activity

(National Interagency Fire Center Wildland Fire Summary and Statistics Annual Report 2012)

### Fires and Complexes Over 40,000 Acres in Idaho in 2012

<b>Name</b>	<b>Acres</b>	<b>Estimated Cost</b>
Mustang Complex	341,488	\$38,323,413
Kinyon Road	210,874	\$1,625,000
Halstead	181,948	\$26,413,932
Trinity Ridge	146,832	\$41,228,912
Flat Top 2	140,954	\$600,000
Minidoka Complex	97,616	\$5,801,271
Powell SBW Complex	67,611	\$4,882,375
Jacks	50,816	\$300,000
Sheep	48,626	\$18,000,000
McGuire Complex	43,621	\$24,741,628

Based on statistics from the National Interagency Fire Center (NIFC) Idaho had almost 20% of the total wildland fires over 40,000 acres in the nation in 2012.

### National Report of Wildland Fires and Acres in Idaho in 2012

Statistics from the NIFC Fire and Aviation Management Web Applications Program

	<b>Wildland Fires</b>	<b># Acres</b>		<b>Prescribed Burns</b>	<b># Acres</b>
IDAHO	1,149	1,667,654		317	31,064
USA	67,774	9,326,238		16,626	1,971,834







Local forecast by "City, St" or ZIP code

[Location Help](#)

### Severe Weather Possible Across Parts of Northern Plains, Southern Plains, Southeast

The NWS Storm Prediction Center is forecasting a possibility of severe thunderstorms Friday afternoon and evening for parts of northeast Wyoming, western South Dakota and northwestern Nebraska, parts of west-central Texas, as well as parts of northern Mississippi and Alabama and southern middle Tennessee. The primary threats will be damaging wind and large hail. [Read More...](#)

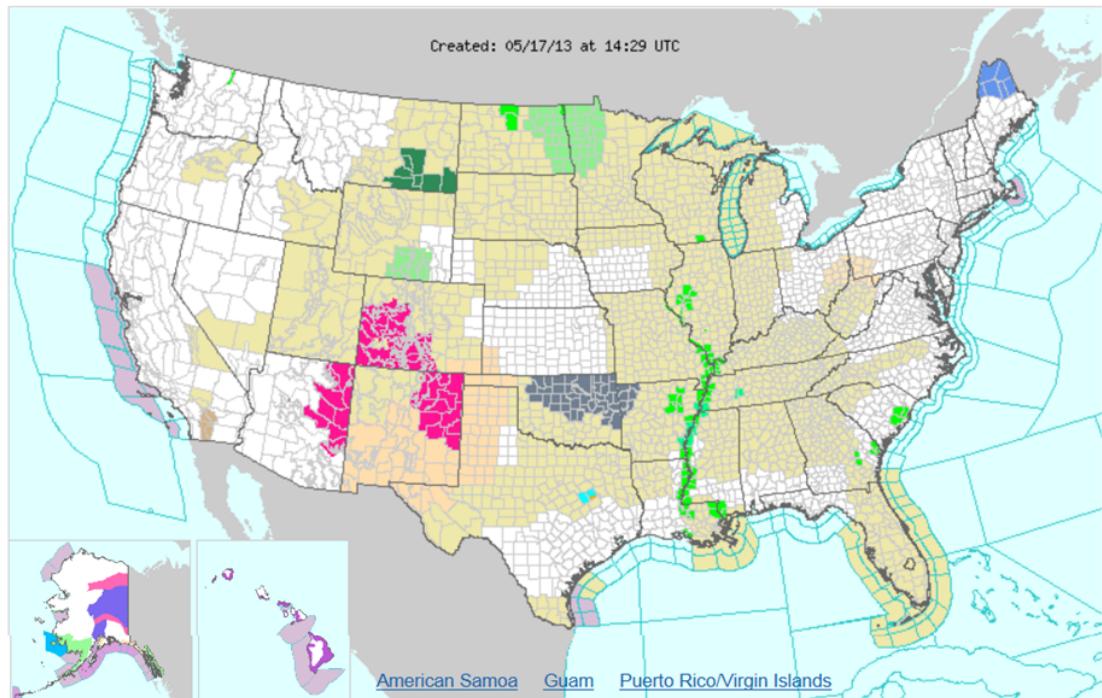
**Customize Your Weather.gov**

City, ST

Enter Your City, ST or ZIP Code

Remember Me

[Privacy Policy](#)



Click on the map above for detailed alerts or   [Public Alerts in XML/CAP v1.1 and ATOM Formats](#)

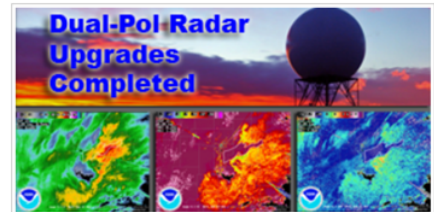
- |                             |                              |   |                           |
|-----------------------------|------------------------------|---|---------------------------|
| Severe Thunderstorm Warning | Gale Warning                 | Dense Fog Advisory                      | Frost Advisory            |
| Flash Flood Warning         | Red Flag Warning             | Small Craft Advisory For Hazardous Seas | Fire Weather Watch        |
| Severe Weather Statement    | Winter Weather Advisory      | Small Craft Advisory For Winds          | Special Weather Statement |
| Winter Storm Warning        | Flood Advisory               | Small Craft Advisory                    | Marine Weather Statement  |
| Flood Warning               | High Surf Advisory           | Brisk Wind Advisory                     | Hazardous Weather Outlook |
| Flash Flood Watch           | Heavy Freezing Spray Warning | Wind Advisory                           | Hydrologic Outlook        |



[WEATHER-READY NATION](#)



[FEDERAL DROUGHT RESOURCES](#)



[DUAL-POL RADAR UPGRADES](#)

<http://www.weather.gov/>

## Referenced Website Links

National Interagency Fire Center Information – Wildland fire statistics  
[http://www.nifc.gov/fireInfo/fireInfo\\_statistics.html](http://www.nifc.gov/fireInfo/fireInfo_statistics.html)

Idaho Firewise  
<http://www.idahofirewise.org/about-us/>

Idaho Department of Lands 2012 Annual Report  
[http://www.idl.idaho.gov/news/annual\\_reports/index\\_ar.htm](http://www.idl.idaho.gov/news/annual_reports/index_ar.htm)

Idaho Department of Lands 2012 Fire Report  
<http://www.idl.idaho.gov/bureau/firemgt.htm>

2012 Population Statistics - Idaho Department of Labor  
<http://lmi.idaho.gov/>

Idaho State Fire Marshal  
<http://www.doi.idaho.gov/sfm/firemars.aspx>

National Weather Service - National Oceanic and Atmospheric Administration  
<http://www.weather.gov/>

A very special “thank you” to those who shared their expertise, data and pictures in the making of this report:

Idaho Fire Departments  
Office of the State Fire Marshal  
Department of Insurance  
National Interagency Fire Center  
Idaho Department of Lands  
Idaho Firewise  
Idaho Department of Labor  
National Weather Service - National Oceanic and Atmospheric Administration

Front and back cover photos from Charlotte Fire, Bannock County. Photos provided by Pocatello Fire Department

Idaho State Fire Marshal  
700 West State Street  
P. O. Box 83720  
Boise, Idaho 83720-0043



# IN MEMORIAM

## **Todd Tompkins Ron Chambless**

Two Boise pilots, Todd Tompkins and Ron Chambless, were killed on June 3, 2012, when their air tanker crashed while helping to suppress the White Rock Fire.

## **Anne Veseth**

U.S. Fire Service Firefighter Anne Veseth was killed August 12, 2012, when she was struck by a falling tree while working fire operations on the Steep Corner Fire.

## **Vance Baldwin**

Boise firefighter Vance Baldwin also served as a volunteer for the Pine-Featherville Volunteer Ambulance District. He was killed July 27, 2012, in an ATV accident in Elmore County on his way to the ambulance station in response to a medical call.

